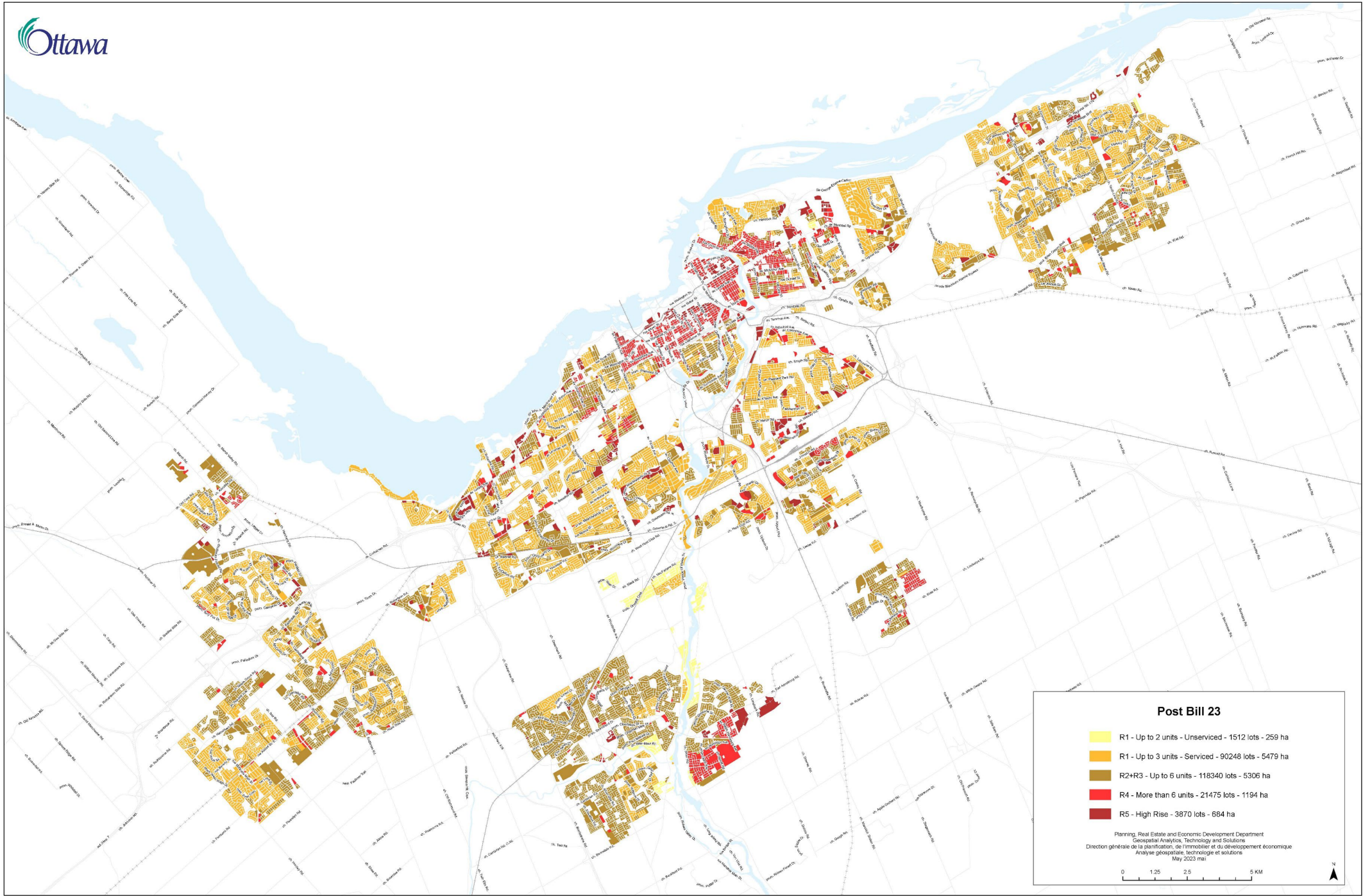


Pre Bill 23

- R1 - Up to 2 units - 91760 lots - 5738 ha
- R2+R3 - Up to 4 units - 118340 lots - 5306 ha
- R4 - More than 4 units - 21475 lots - 1194 ha
- R5 - High Rise - 3870 lots - 684 ha

Planning, Real Estate and Economic Development Department
Geospatial Analysis, Technology and Solutions
Direction générale de la planification, de l'immobilier et du développement économique
Analyse géospatiale, technologie et solutions
May 2023 ma

0 1.25 2.5 5 KM



Post Bill 23

- R1 - Up to 2 units - Unserviced - 1512 lots - 259 ha
- R1 - Up to 3 units - Serviced - 90248 lots - 5479 ha
- R2+R3 - Up to 6 units - 118340 lots - 5306 ha
- R4 - More than 6 units - 21475 lots - 1194 ha
- R5 - High Rise - 3870 lots - 684 ha

Planning, Real Estate and Economic Development Department
Géospatial Analytics, Technology and Solutions
Direction générale de la planification, de l'immobilier et du développement économique
Analyse géospatiale, technologie et solutions
May 2023 (m)

0 1.25 2.5 5 KM