

Distances shown on this plan are ground distances and can be converted to grid distances by multiplying by the combined scale factor of 0.9999xx.

Bearings are grid, derived from Can-Net 2016 Real Time Network GPS observations on reference points A and B, shown hereon, having a bearing of Nxx°xx'xx"W and are referenced to Specified Control Points 01919680184 and 019198434761, MTM Zone 9 (76°30' West Longitude) NAD-83 (original).

For bearing comparisons, a rotation of 0°00'00" counter-clockwise was applied to bearings on plan

Coordinates are derived from Can-Net 2016 Real Time Network GPS observations referenced to Specified Control Points 01919680184 and 019198434761, MTM Zone 9 (76°30' West Longitude) NAD-83 (original).

Coordinate values are to urban accuracy in accordance with O. Reg. 216/10.

. 01919680184 Northing 5040610.16 Easting 384736.56
 . 019198434761 Northing 5036178.12 Easting 372436.11
 . Point A Northing Easting
 . Point B Northing Easting

Caution: Coordinates cannot, in themselves, be used to re-establish corners or boundaries shown on this plan.

Committee of Adjustment
 Received | Reçu le
2023-04-21
 City of Ottawa | Ville d'Ottawa
Comité de dérogation

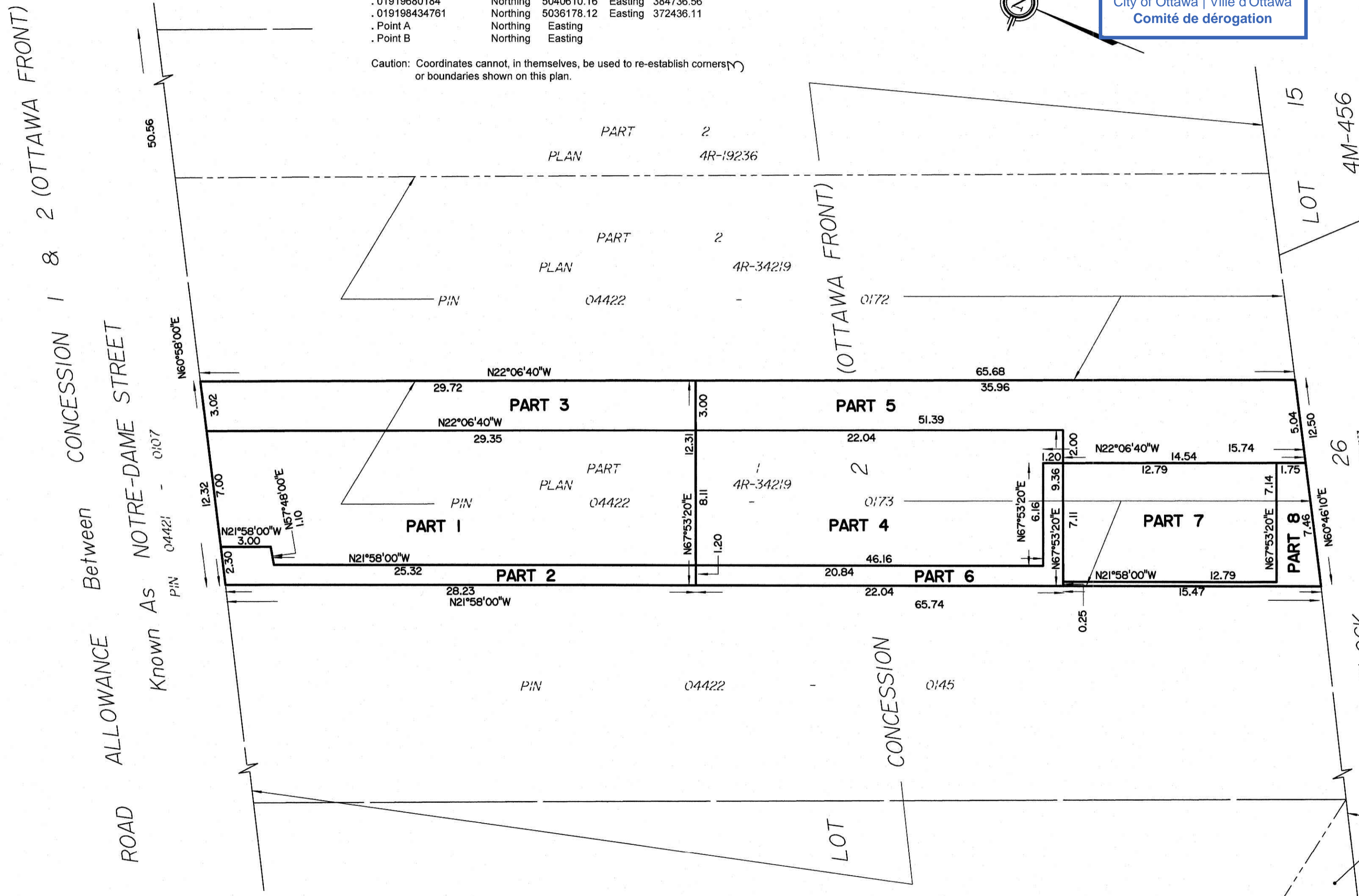
I REQUIRE THIS PLAN TO BE DEPOSITED UNDER THE LAND TITLES ACT.
 DATE: _____

 T. HARTWICK
 ONTARIO LAND SURVEYOR

PLAN 4R-
 RECEIVED AND DEPOSITED
 DATE: _____

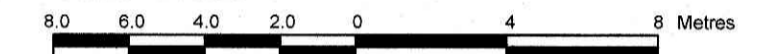
 REPRESENTATIVE FOR
 LAND REGISTRAR FOR THE
 LAND TITLES DIVISION OF
 OTTAWA-CARLETON NO. 4.

SCHEDULE					
PURPOSE	AREA (Sq.m.)	PART	LOT	CONCESSION	PIN
UNIT A	229.7	1	PART OF 3	2 (OTTAWA FRONT)	ALL OF 04422-0173
UNIT A+WALKWAY	37.2	2			
UNIT A+DRIVEWAY	88.6	3			
UNIT B	172.0	4			
UNIT B+DRIVEWAY	137.3	5			
UNIT B+WALKWAY	33.8	6			
UNIT B+PARKING EASEMENT	91.1	7			
UNIT B	19.6	8			



PLAN OF SURVEY OF
PART OF LOT 3
CONCESSION 2 (OTTAWA FRONT)
Geographic Township of Gloucester
CITY OF OTTAWA

Surveyed by Annis, O'Sullivan, Vollebakk Ltd.
 Scale 1 : 200



Metric
 DISTANCES AND COORDINATES SHOWN ON THIS PLAN ARE IN METRES AND CAN BE CONVERTED TO FEET BY DIVIDING BY 0.3048.

Surveyor's Certificate
 I CERTIFY THAT:
 1. This survey and plan are correct and in accordance with the Surveys Act, the Surveyors Act and the Land Titles Act and the regulations made under them.
 2. The survey was completed on the ___ day of _____, 2023.

 Date
 T. Hartwick
 Ontario Land Surveyor

This plan of survey relates to AOLS Plan Submission Form Number V-

- Notes & Legend**
- Denotes Survey Monument Planted
 - " Survey Monument Found
 - SIB " Standard Iron Bar
 - SSIB " Short Standard Iron Bar
 - IB " Iron Bar
 - (WIT) " Witness
 - (AOG) " Annis, O'Sullivan, Vollebakk Ltd.
 - Meas. " Measured
 - (P1) " Plan

ANNIS, O'SULLIVAN, VOLLEBEKK LTD.
 14 Concourse Gate, Suite 500
 Nepean, Ont. K2E 7S6
 Phone: (613) 727-0850 / Fax: (613) 727-1079
 Email: Nepean@aovltd.com

Ontario Land Surveyors Job No. 23828-23 Page P1L13 C2 R D3

Distances shown on this plan are ground distances and can be converted to grid distances by multiplying by the combined scale factor of 0.9999xx.

Bearings are grid, derived from Can-Net 2016 Real Time Network GPS observations on reference points A and B, shown hereon, having a bearing of Nxx°xx'xx"W and are referenced to Specified Control Points 01919680184 and 019198434761, MTM Zone 9 (76°30' West Longitude) NAD-83 (original).

For bearing comparisons, a rotation of 0°00'00" counter-clockwise was applied to bearings on plan

Coordinates are derived from Can-Net 2016 Real Time Network GPS observations referenced to Specified Control Points 01919680184 and 019198434761, MTM Zone 9 (76°30' West Longitude) NAD-83 (original).

Coordinate values are to urban accuracy in accordance with O. Reg. 216/10.

. 01919680184 Northing 5040610.16 Easting 384736.56
 . 019198434761 Northing 5036178.12 Easting 372436.11
 . Point A Northing Easting
 . Point B Northing Easting

Caution: Coordinates cannot, in themselves, be used to re-establish corners or boundaries shown on this plan.

Committee of Adjustment
 Received | Reçu le
 2023-04-21
 City of Ottawa | Ville d'Ottawa
 Comité de dérogation

I REQUIRE THIS PLAN TO BE DEPOSITED UNDER THE LAND TITLES ACT.

DATE: _____

T. HARTWICK
 ONTARIO LAND SURVEYOR

PLAN 4R-

RECEIVED AND DEPOSITED
 DATE: _____

REPRESENTATIVE FOR
 LAND REGISTRAR FOR THE
 LAND TITLES DIVISION OF
 OTTAWA-CARLETON NO. 4.

SCHEDULE

PURPOSE	AREA (Sq.m.)	PART	LOT	CONCESSION	PIN
UNIT A	229.7	1	PART OF 3	2 (OTTAWA FRONT)	ALL OF 04422-0173
UNIT A+WALKWAY	37.2	2			
UNIT A+DRIVEWAY	88.6	3			
UNIT B	172.0	4			
UNIT B+DRIVEWAY	137.3	5			
UNIT B+WALKWAY	33.8	6			
UNIT B+PARKING EASEMENT	91.1	7			
UNIT B	19.6	8			

PLAN OF SURVEY OF

**PART OF LOT 3
 CONCESSION 2 (OTTAWA FRONT)
 Geographic Township of Gloucester
 CITY OF OTTAWA**

Surveyed by Annis, O'Sullivan, Vollebakk Ltd.
 Scale 1 : 200

8.0 6.0 4.0 2.0 0 4 8 Metres

Metric

DISTANCES AND COORDINATES SHOWN ON THIS PLAN ARE IN METRES AND CAN BE CONVERTED TO FEET BY DIVIDING BY 0.3048.

Surveyor's Certificate

I CERTIFY THAT:

- This survey and plan are correct and in accordance with the Surveys Act, the Surveyors Act and the Land Titles Act and the regulations made under them.
- The survey was completed on the ___ day of _____, 2023.

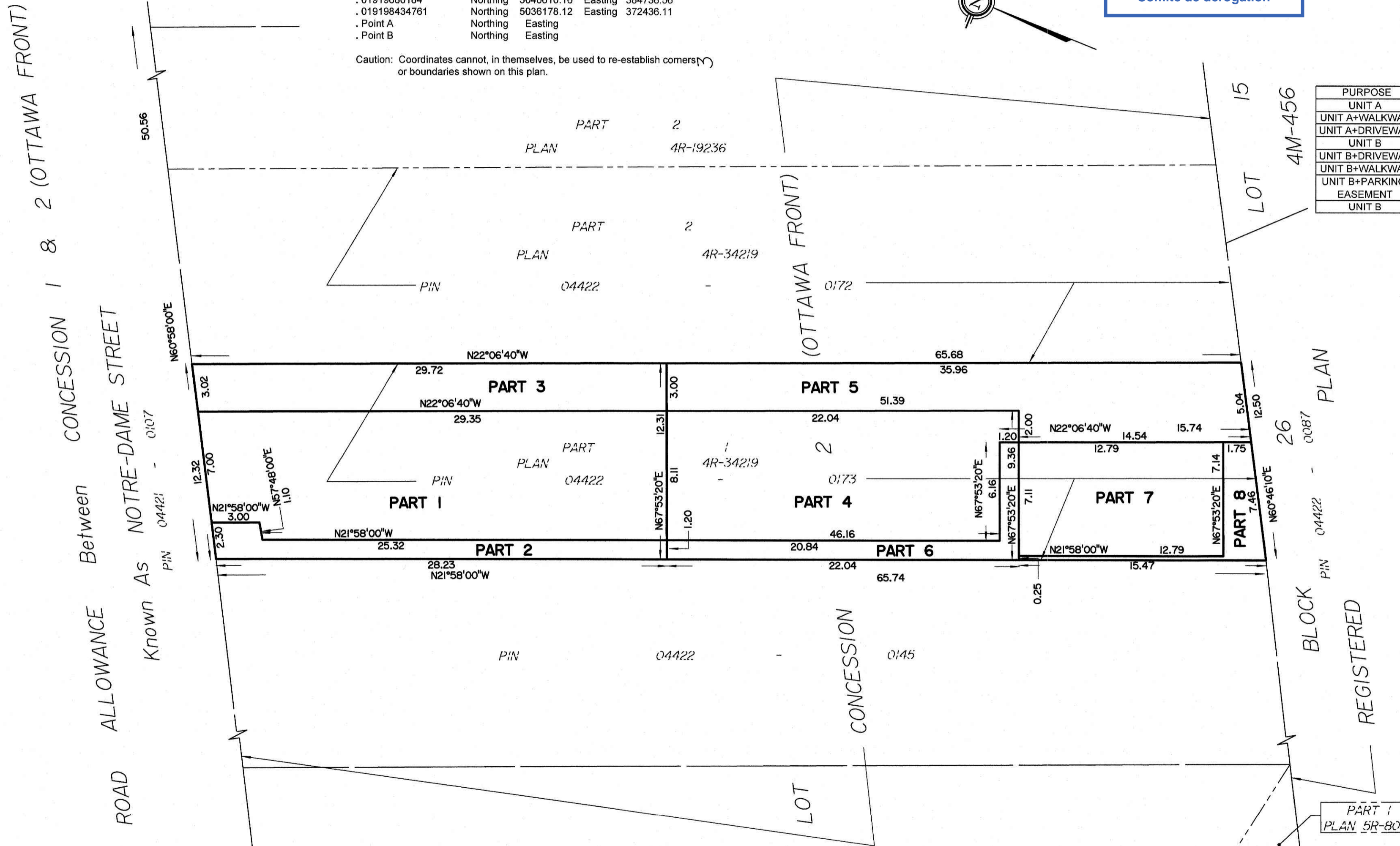
Date

T. Hartwick
 Ontario Land Surveyor

This plan of survey relates to AOLS Plan Submission Form Number V-

Notes & Legend

- Denotes Survey Monument Planted
- " Survey Monument Found
- SIB " Standard Iron Bar
- SSIB " Short Standard Iron Bar
- IB " Iron Bar
- (WIT) " Witness
- (AOG) " Annis, O'Sullivan, Vollebakk Ltd.
- Meas. " Measured
- (P1) " Plan



ANNIS, O'SULLIVAN, VOLLEBEKK LTD.
 14 Concourse Gate, Suite 500
 Nepean, Ont. K2E 7S6
 Phone: (613) 727-0850 / Fax: (613) 727-1079
 Email: Nepean@aovltd.com

Ontario Land Surveyors Job No. 23828-23 Page P1L13 C2 R D3