

METRIC DISTANCES AND COORDINATES SHOWN ON THIS PLAN ARE IN METRES AND CAN BE CONVERTED TO FEET BY DIVIDING BY 0.3048

| SCHEDULE | | | |
|----------|-----------------|-----------------|---------------------|
| PART | BLOCK | REGISTERED PLAN | AREA M ² |
| 1 | PART OF BLOCK 4 | 4M-642 | 2653 |
| | | PIN | 04517-0819 |

I REQUIRE THIS PLAN TO BE DEPOSITED UNDER THE LAND TITLES ACT.

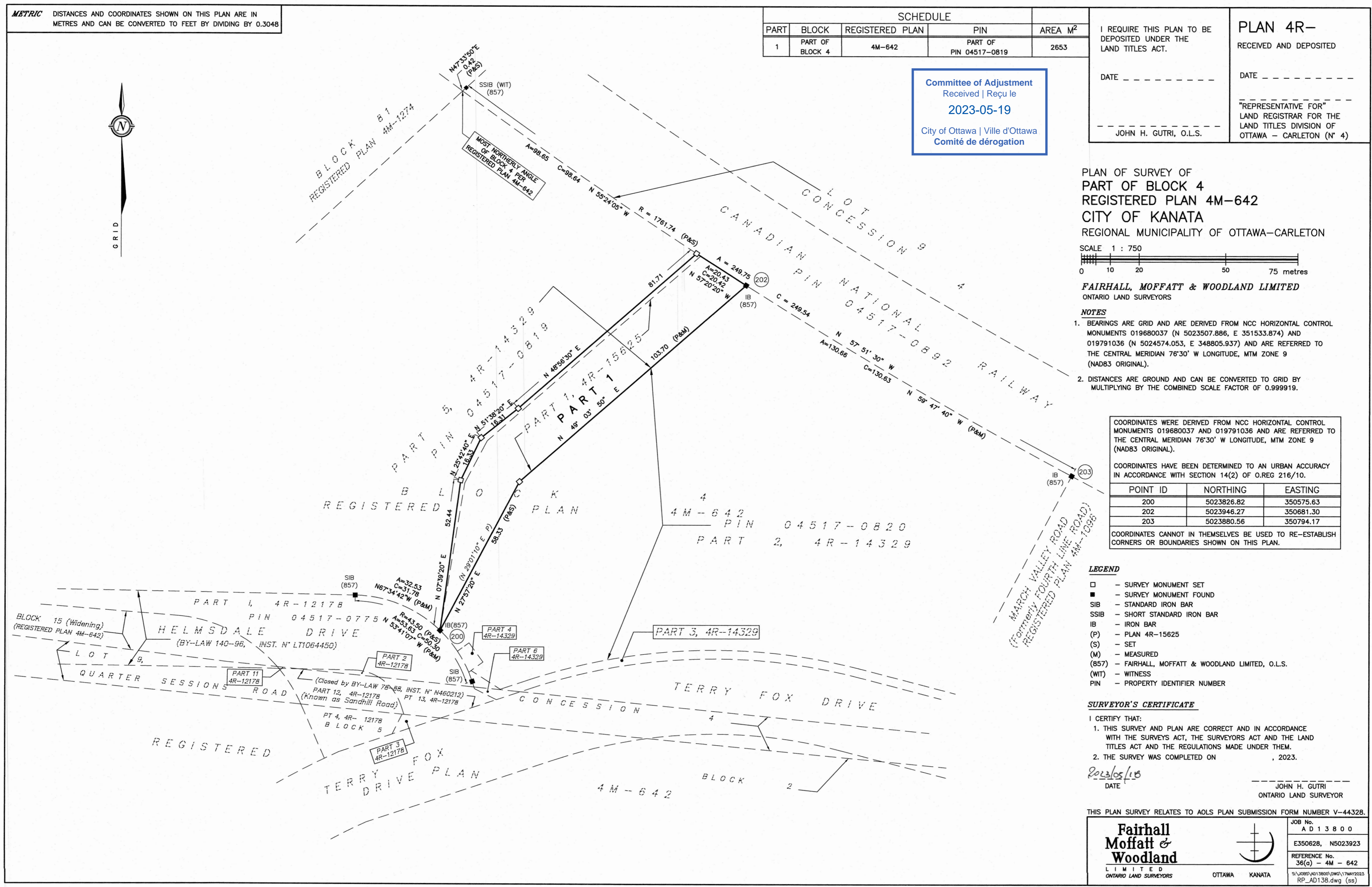
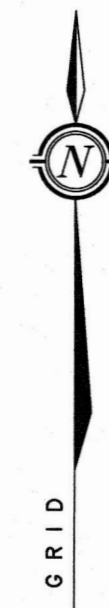
DATE _____

REPRESENTATIVE FOR LAND REGISTRAR FOR THE LAND TITLES DIVISION OF OTTAWA - CARLETON (N° 4)

DATE _____

JOHN H. GUTRI, O.L.S.

Committee of Adjustment
Received | Reçu le
2023-05-19
City of Ottawa | Ville d'Ottawa
Comité de dérogation



PLAN OF SURVEY OF
PART OF BLOCK 4
REGISTERED PLAN 4M-642
CITY OF KANATA
REGIONAL MUNICIPALITY OF OTTAWA-CARLETON

SCALE 1 : 750

0 10 20 50 75 metres

FAIRHALL, MOFFATT & WOODLAND LIMITED
ONTARIO LAND SURVEYORS

- NOTES**
- BEARINGS ARE GRID AND ARE DERIVED FROM NCC HORIZONTAL CONTROL MONUMENTS 019680037 (N 5023507.886, E 351533.874) AND 019791036 (N 5024574.053, E 348805.937) AND ARE REFERRED TO THE CENTRAL MERIDIAN 76°30' W LONGITUDE, MTM ZONE 9 (NAD83 ORIGINAL).
 - DISTANCES ARE GROUND AND CAN BE CONVERTED TO GRID BY MULTIPLYING BY THE COMBINED SCALE FACTOR OF 0.999919.

COORDINATES WERE DERIVED FROM NCC HORIZONTAL CONTROL MONUMENTS 019680037 AND 019791036 AND ARE REFERRED TO THE CENTRAL MERIDIAN 76°30' W LONGITUDE, MTM ZONE 9 (NAD83 ORIGINAL).

COORDINATES HAVE BEEN DETERMINED TO AN URBAN ACCURACY IN ACCORDANCE WITH SECTION 14(2) OF O.REG 216/10.

| POINT ID | NORTHING | EASTING |
|----------|------------|-----------|
| 200 | 5023826.82 | 350575.63 |
| 202 | 5023946.27 | 350681.30 |
| 203 | 5023880.56 | 350794.17 |

COORDINATES CANNOT IN THEMSELVES BE USED TO RE-ESTABLISH CORNERS OR BOUNDARIES SHOWN ON THIS PLAN.

- LEGEND**
- - SURVEY MONUMENT SET
 - - SURVEY MONUMENT FOUND
 - SIB - STANDARD IRON BAR
 - SSIB - SHORT STANDARD IRON BAR
 - IB - IRON BAR
 - (P) - PLAN 4R-15625
 - (S) - SET
 - (M) - MEASURED
 - (857) - FAIRHALL, MOFFATT & WOODLAND LIMITED, O.L.S.
 - (WIT) - WITNESS
 - PIN - PROPERTY IDENTIFIER NUMBER

SURVEYOR'S CERTIFICATE

I CERTIFY THAT:

- THIS SURVEY AND PLAN ARE CORRECT AND IN ACCORDANCE WITH THE SURVEYS ACT, THE SURVEYORS ACT AND THE LAND TITLES ACT AND THE REGULATIONS MADE UNDER THEM.
- THE SURVEY WAS COMPLETED ON _____, 2023.

2023/05/19
DATE

JOHN H. GUTRI
ONTARIO LAND SURVEYOR

THIS PLAN SURVEY RELATES TO AOLS PLAN SUBMISSION FORM NUMBER V-44328.

| | | |
|---|--|--|
| Fairhall Moffatt & Woodland LIMITED ONTARIO LAND SURVEYORS | | JOB No. A D 1 3 8 0 0 |
| | | E350628, N5023923 |
| | | REFERENCE No. 36(a) - 4M - 642 |
| | | S:\JOBS\4013800\DWG\17MAY2023 RP_AD138.dwg (ss) |