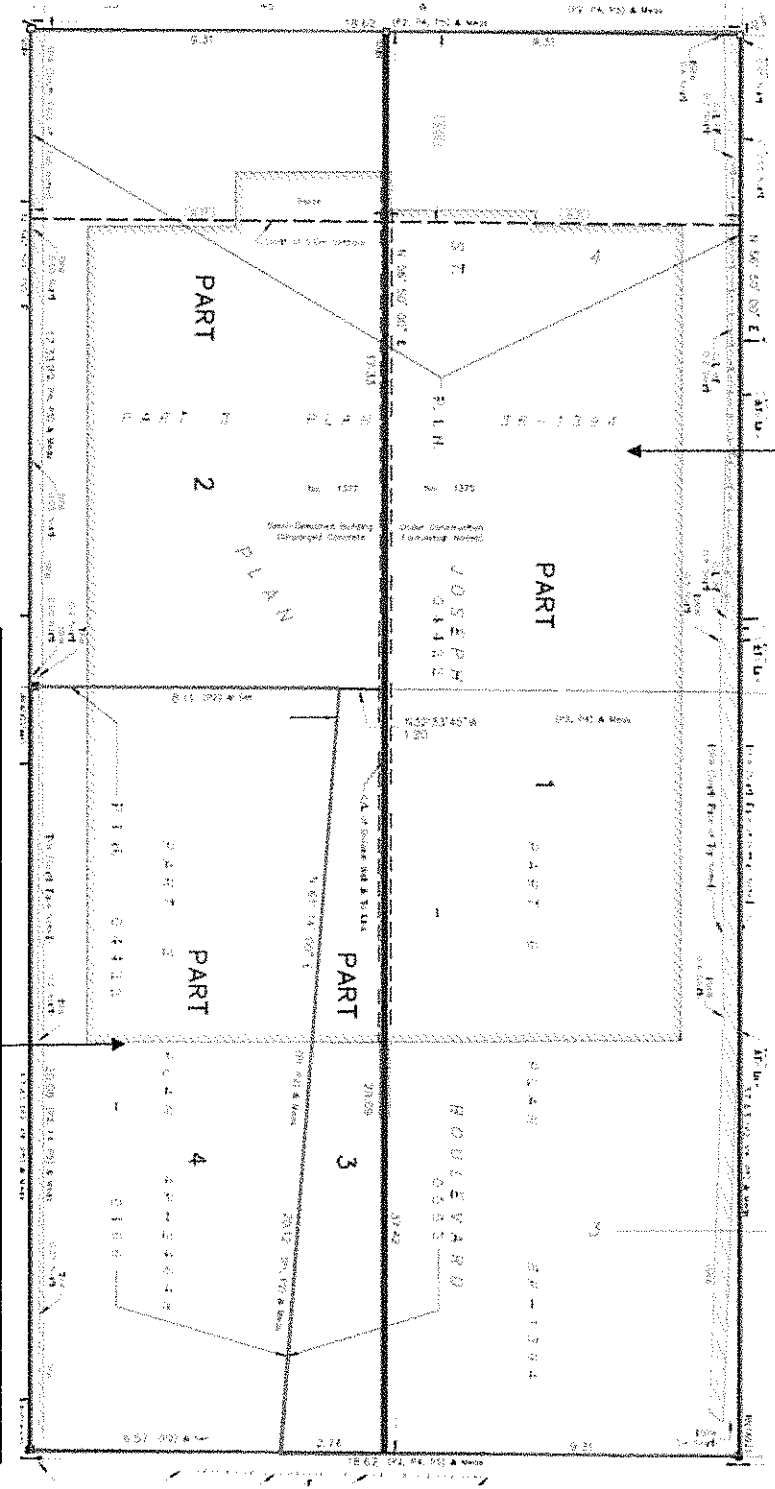
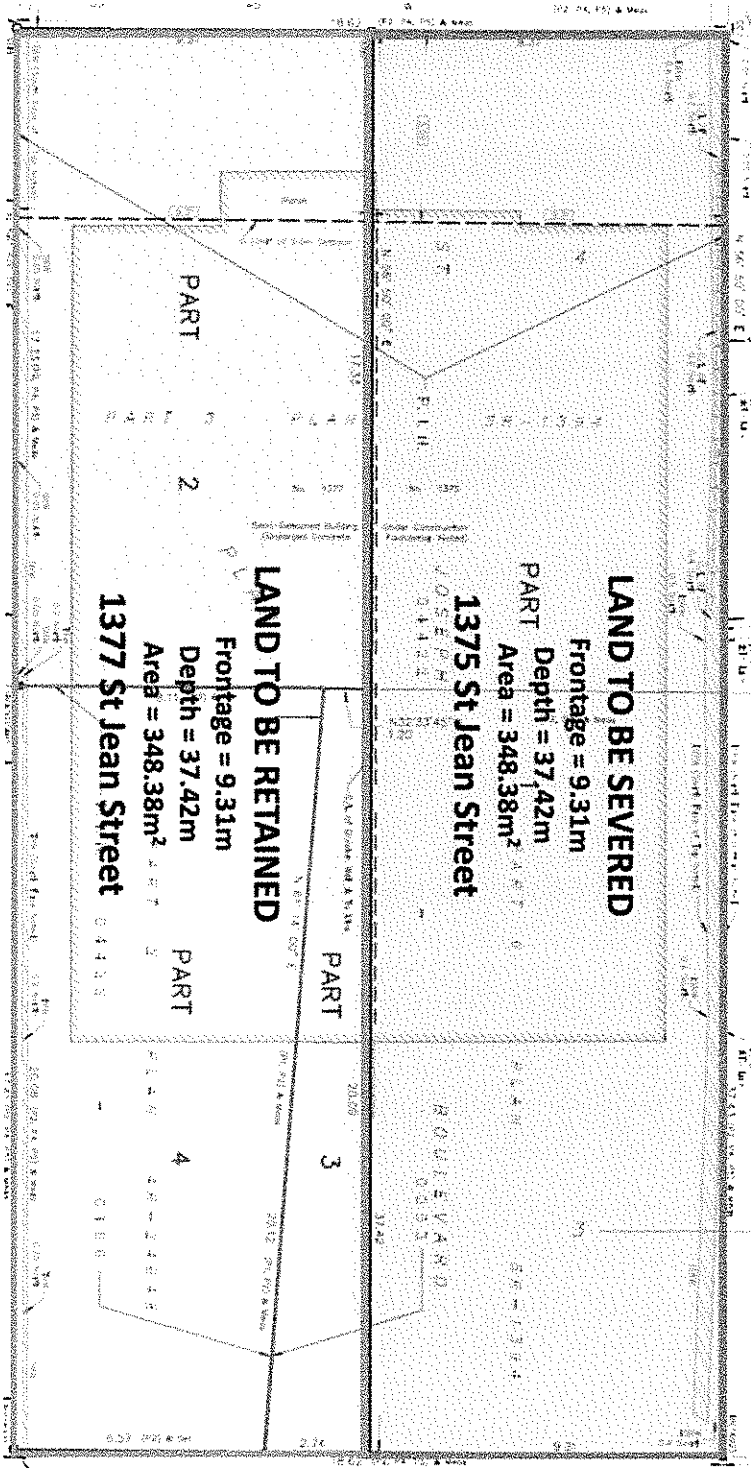


REFD

Current PIN 04422-0053
LEGAL DESCRIPTION: PT LTS 384, PL 10, PART 3 and 6,
5R1394, S/S ST JOSEPH BLVD (FORMERLY OTTAWA
ST); GLOUSESTER



Current PIN 04422-0166
LEGAL DESCRIPTION: PART LOT 3 PLAN 10 S/S ST.
JOSEPH BLVD (FORMERLY OTTAWA STREET) PART 2
ON PLAN 4R24648; CITY OF OTTAWA



LAND TO BE SEVERED

Frontage = 9.31m

PART 2
Depth = 37.42m

Area = 348.38m²

1375 St Jean Street

LAND TO BE RETAINED

Frontage = 9.31m

PART 3
Depth = 37.42m

Area = 348.38m²

1377 St Jean Street

PART 4

4

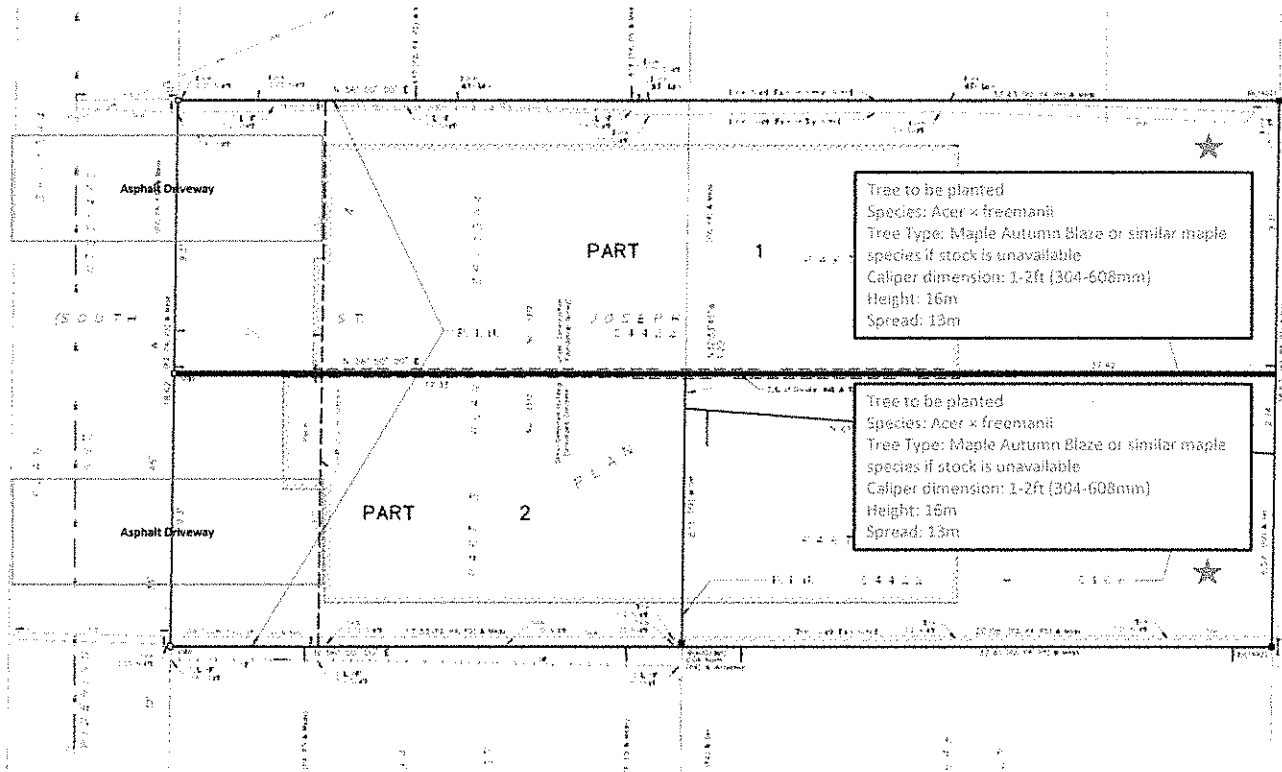
PART 3

3

ROULEVARD

3

S.T. JEAN S.T.



Tree to be planted
 Species: *Acer x freemanii*
 Tree Type: Maple Autumn Blaze or similar maple species if stock is unavailable
 Caliper dimension: 1-2ft (304-608mm)
 Height: 15m
 Spread: 13m

Tree to be planted
 Species: *Acer x freemanii*
 Tree Type: Maple Autumn Blaze or similar maple species if stock is unavailable
 Caliper dimension: 1-2ft (304-608mm)
 Height: 15m
 Spread: 13m