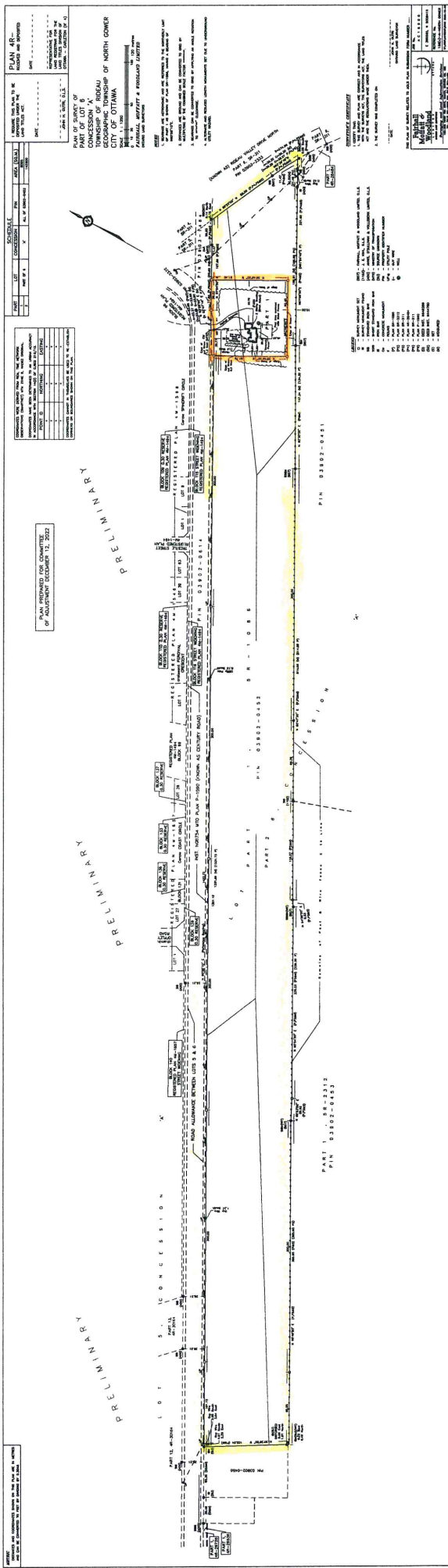


(KNOWN AS) RIDEAU VALL
 PART 6, SR-311
 PIN 03903-2333

A=36.32 C=36.30
 (A=36.29 C=36.27 P,P4,P5&M)
 N62°35'45"W
 (P,P4,P5&M)

Committee of Adjustment
 JUN 16 2023
 City of Ottawa



Committee of Adjustment
 JUN 16 2023
 City of Ottawa