

MH-ST
TVG=92.22

Scale 1 : 150



voie Mount Nebo Way

PART 99
PLAN 4R-31084

Committee of Adjustment
Received | Reçu le

2023-05-30

City of Ottawa | Ville d'Ottawa
Comité de dérogation

LOT 261

Subdrain Catchbasin
Per Grading Plan
Project 160401260
Drawing PP-15 SH.26 of 60
Not Visible

LOT 262

REGISTERED

PLAN

4M-1601

LOT 260

LOT 259

LOT 263

LOT 260

LOT 264

LOT 236

LOT 265

Notes & Legend

CB Denotes Catch Basin

+92.10 " Existing Grade

SITE AND DRAINAGE/GRADING PLAN
Showing Existing Ground Elevation and
Drainage

290 Mount Nebo Way
CITY OF OTTAWA

Prepared by Annis, O'Sullivan, Vollebek Ltd.
March 20, 2023

Metric

DISTANCES SHOWN ON THIS PLAN ARE IN METRES AND
CAN BE CONVERTED TO FEET BY DIVIDING BY 0.3048

Caution

This is NOT a Plan of Survey and shall not be used
except for the purpose indicated in the title block.

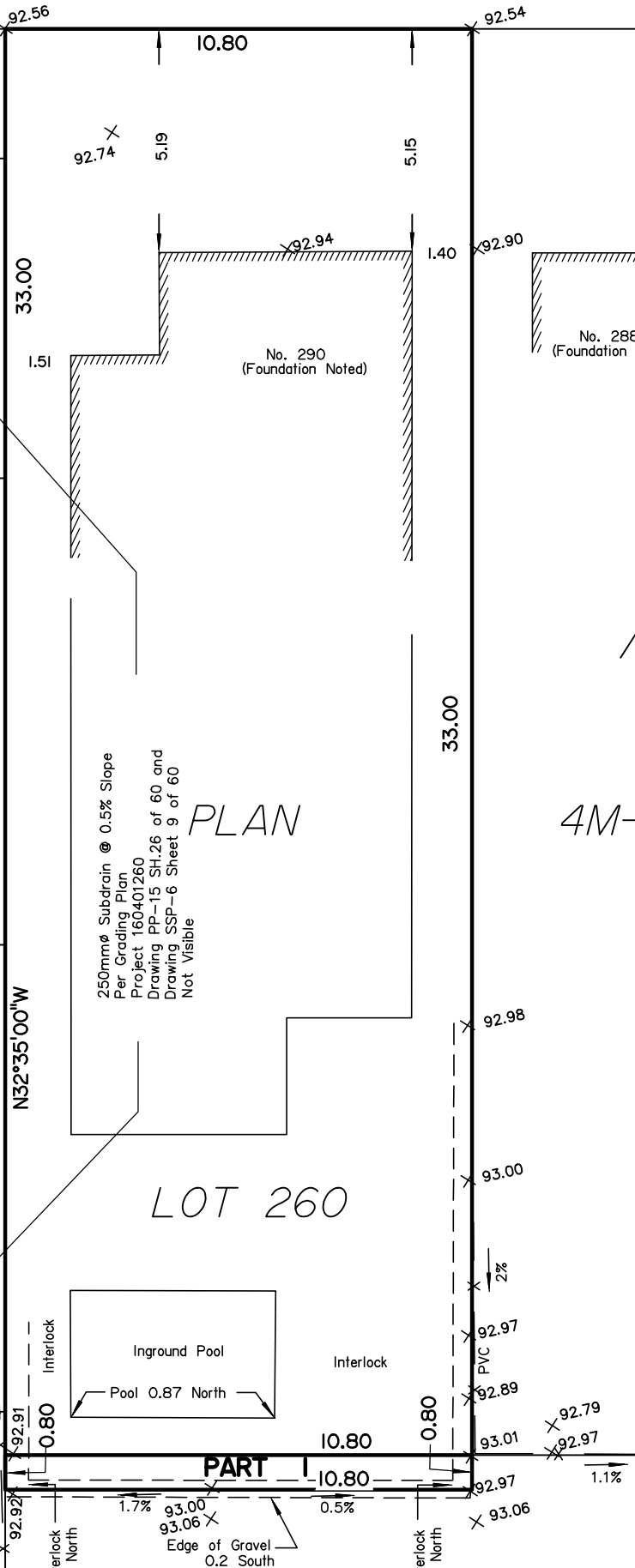
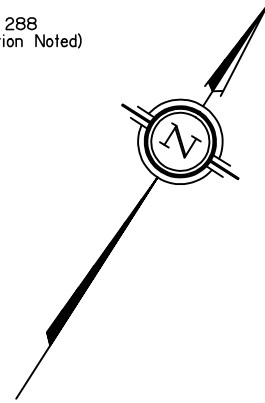
Boundary information compiled from 4M-1601

© Annis, O'Sullivan, Vollebek Ltd, 2023. "THIS SKETCH IS PROTECTED BY COPYRIGHT"

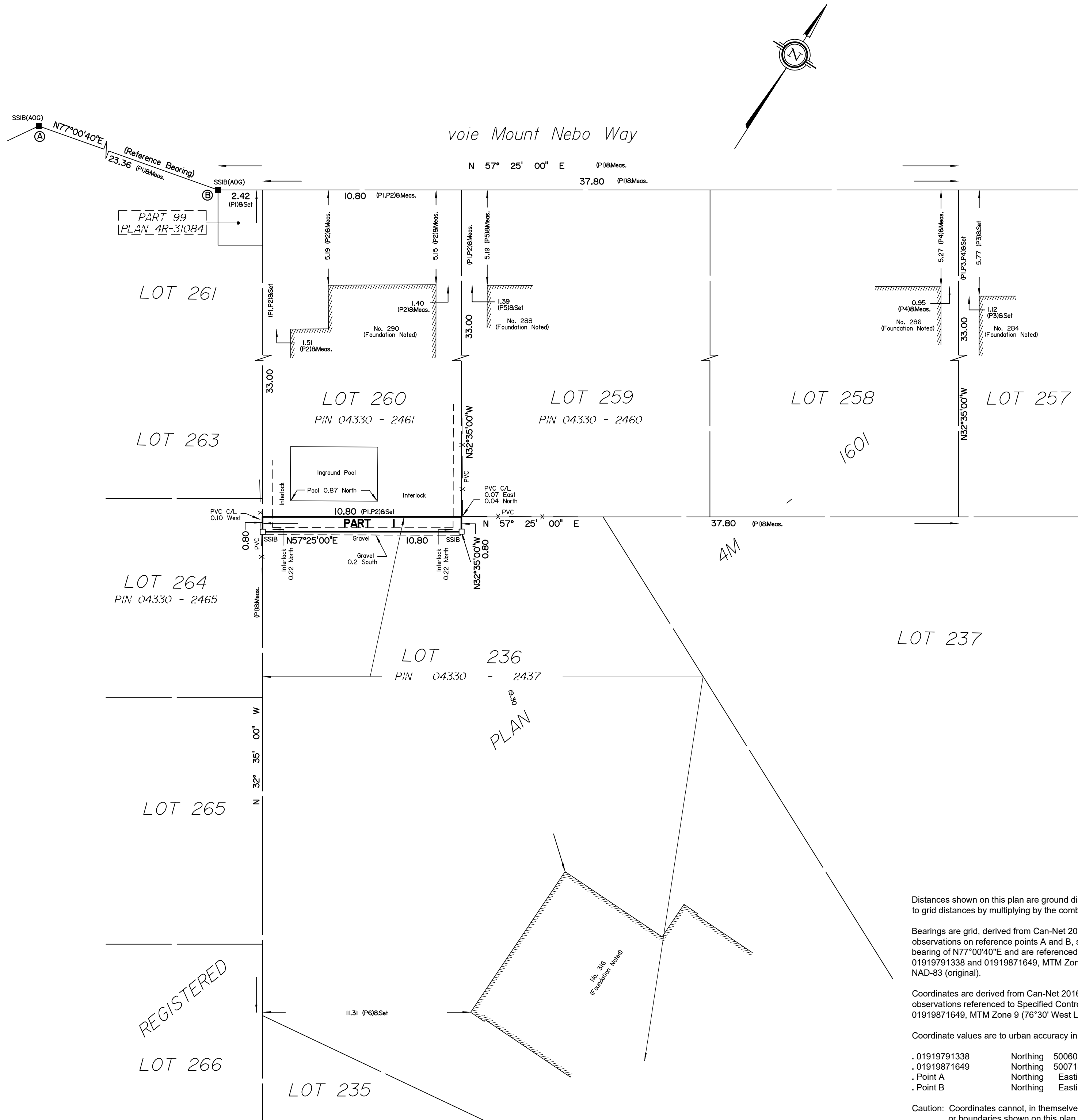
ANNIS, O'SULLIVAN, VOLLEBEK LTD.
14 Concourse Gate, Suite 500
Nepean, Ont. K2E 7S6
Phone: (613) 727-0850 / Fax: (613) 727-1079
Email: Nepean@aovltd.com

Ontario
Land Surveyors

Job No. 23348-22_RS19lev_290_MountNeboWay_GP_D2

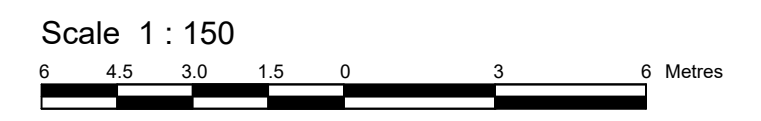


Y:\2022\23348-22_Richard Staley_316 Memorial Grove_R-Plan_EHD\Drawings\23348-22_RS19lev_290 MountNeboWay_GP_D2.dwg



SCHEDULE				
AREA (Sq.m.)	PART	LOT	PLAN	PIN
8.6	1	PART OF 236	4M-1601	PART OF 04330-2437

PLAN OF SURVEY OF PART OF LOT 236 REGISTERED PLAN 4M-1601 CITY OF OTTAWA
 Surveyed by Annis, O'Sullivan, Vollebek Ltd.



The intended plot size of this plan is 610 mm in width by 457 mm in height when plotted at a scale of 1:150.

Metric
 DISTANCES AND COORDINATES SHOWN ON THIS PLAN ARE IN METRES AND CAN BE CONVERTED TO FEET BY DIVIDING BY 0.3048.

Surveyor's Certificate
 I CERTIFY THAT:
 1. This survey and plan are correct and in accordance with the Surveys Act, the Surveyors Act and the Land Titles Act and the regulations made under them.
 2. The survey was completed on the 3rd day of October, 2022.

Date _____ E.H. Herweyer
 Ontario Land Surveyor

This plan relates to AOLS Plan Submission form number:

Notes & Legend

—□—	Denotes	"	Survey Monument Planted
—■—	"	"	Survey Monument Found
SIB	"	"	Standard Iron Bar
SSIB	"	"	Short Standard Iron Bar
IB	"	"	Iron Bar
(WIT)	"	"	Witness
Meas.	"	"	Measured
(AOG)	"	"	Annis, O'Sullivan, Vollebek Ltd.
(P1)	"	"	Registered Plan 4M-1601
(P2)	"	"	(857) Plan April 18, 2019 - Lot 260
(P3)	"	"	(AOG) Plan October 10, 2019 - Lot 257
(P4)	"	"	(AOG) Plan April 18, 2019 - Lot 258
(P5)	"	"	(857) Plan April 18, 2019 - Lot 259
(P6)	"	"	(AOG) Plan April 18, 2019 - Lot 236
PVC	"	"	Plastic Fence

Distances shown on this plan are ground distances and can be converted to grid distances by multiplying by the combined scale factor of 0.99994.

Bearings are grid, derived from Can-Net 2016 Real Time Network GPS observations on reference points A and B, shown hereon, having a bearing of N77°00'40"E and are referenced to Specified Control Points 01919791338 and 01919871649, MTM Zone 9 (76°30' West Longitude) NAD-83 (original).

Coordinates are derived from Can-Net 2016 Real Time Network GPS observations referenced to Specified Control Points 01919791338 and 01919871649, MTM Zone 9 (76°30' West Longitude) NAD-83 (original).

Coordinate values are to urban accuracy in accordance with O. Reg. 216/10.

. 01919791338	Northing	5006055.96	Easting	346140.91
. 01919871649	Northing	5007189.87	Easting	372435.05
. Point A	Northing		Easting	
. Point B	Northing		Easting	

Caution: Coordinates cannot, in themselves, be used to re-establish corners or boundaries shown on this plan.

ANNIS, O'SULLIVAN, VOLLEBEK LTD.
 14 Concourse Gate, Suite 500
 Nepean, Ont. K2E 7S6
 Phone: (613) 727-0850 / Fax: (613) 727-1079
 Email: Nepear@avlltd.com

Ontario Land Surveyors Job No. 23348-22 C2 FS