

dims to 0.1m

front elevation
recessed more than 0.6m

7.4 m

proposed
addition

Committee of Adjustment
Received | Reçu le

2023-07-14

City of Ottawa | Ville d'Ottawa
Comité de dérogation

Front Elevation
Area 71.0 sqm
Elevation recessed more
than 0.6m 34.9 sqm
37%

gable
side facing
roof

Front Façade
Area 45 sqm
Window Area
6.3 sqm
14%

wrap
around
porch roof



wrap around
deck

9.6 m

3.5 m

0.8 m

1.2 m

5.7 m

0.9 m

1.6 m

0.9 m

6.1 m

1.1 m

1.6 m

0.6 m

1.2 m

THIS DOCUMENT
CONTAINS
CONFIDENTIAL AND
PROPRIETARY
INFORMATION THAT
CANNOT
BE REPRODUCED OR
DIVULGED, IN WHOLE
OR IN PART, WITHOUT
WRITTEN
AUTHORIZATION
FROM Modulink

Copyright registration

Modulink
Planning & Design
331 Osgoode Street
Apt 3, Ottawa, Ont.
K1N 1H2

CLIENT

PROJECT
24 Lowrey

ISSUE
CJ

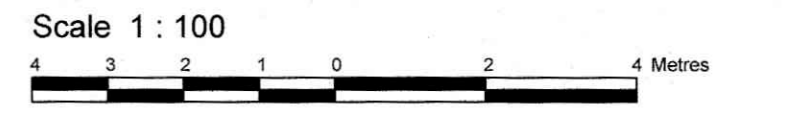
Scale
1:100

DRAWN BY
PROJECT NO.
2023

July 13, 2023
Elevation

A.04

TOPOGRAPHIC PLAN OF SURVEY OF
PART OF LOT 69
REGISTERED PLAN 57
CITY OF OTTAWA
 Surveyed by Annis, O'Sullivan, Vollebakk Ltd.



Metric
 DISTANCES SHOWN ON THIS PLAN ARE IN METRES AND
 CAN BE CONVERTED TO FEET BY DIVIDING BY 0.3048.

Surveyor's Certificate

I CERTIFY THAT:
 1. This survey and plan are correct and in accordance with the Surveys Act and the Surveyors Act and the regulations made under them.
 2. The survey was completed on the 2nd day of March, 2022.

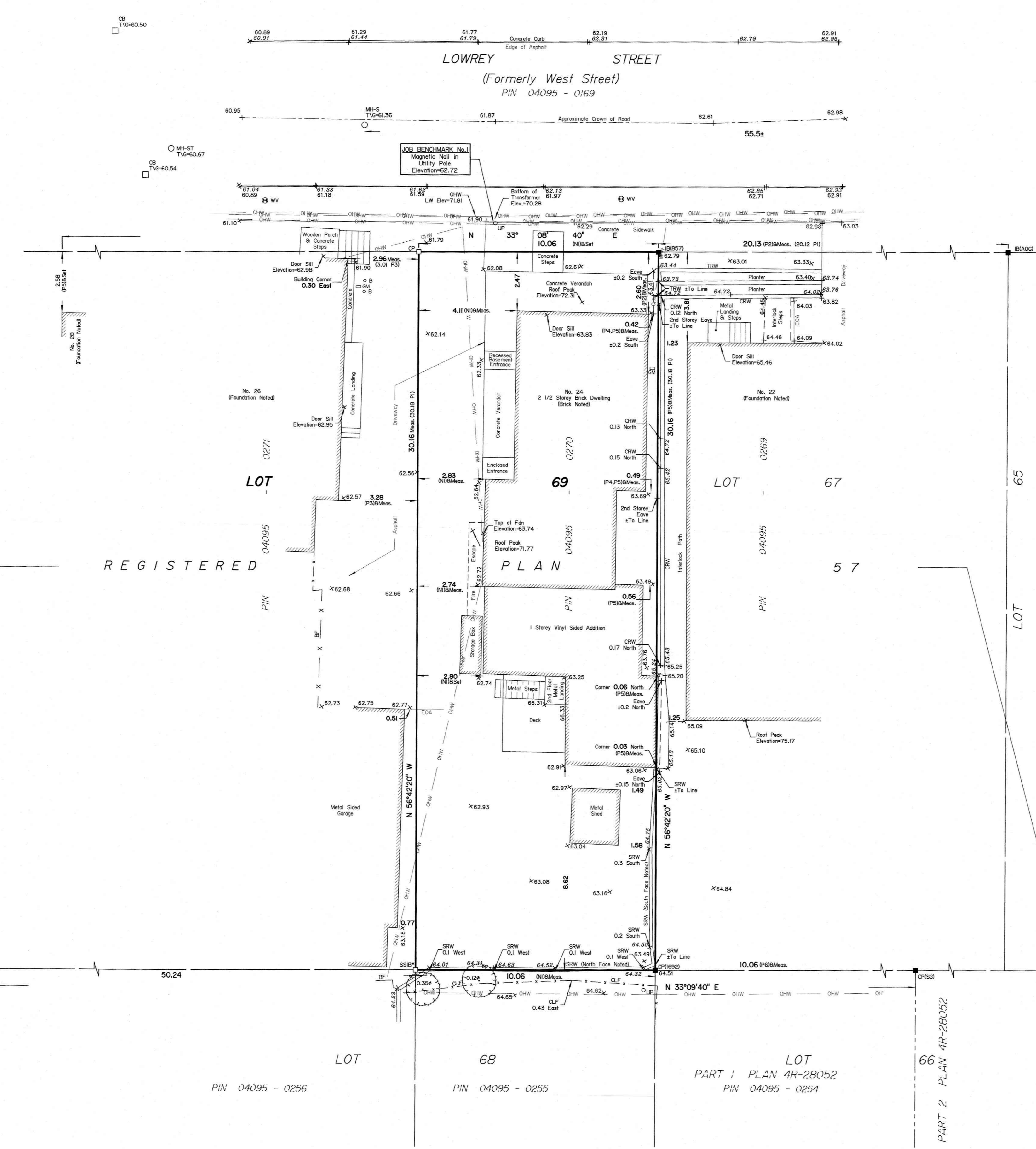
MARCH 4/22
 Date

 Stefan S. Bazar
 Ontario Land Surveyor

Notes & Legend

□	Denotes	Survey Monument Planted
■		Survey Monument Found
SSIB		Short Standard Iron Bar
IB		Iron Bar
CC		Cut Cross
CP		Concrete Pin
SSIB*		Short Standard Iron Bar
IB*		Iron Bar
(WIT)		Witness
Meas.		Measured
(AOG)		Annis, O'Sullivan, Vollebakk Ltd.
(P1)		Registered Plan 57
(P2)		(AOG) Plan dated May 16, 2018
(P3)		(725) Plan dated May 19, 1981
(P4)		(1692) Plan dated October 17, 2012
(P5)		(857) Plan dated March 8, 2018
(NI)		(AOG) Notes dated 1982
(P6)		Plan 4R-28052
○		Deciduous Tree
⊗		Gas Meter
⊕		Water Valve
⊖		Gate
○ MH-ST		Maintenance Hole (Storm Sewer)
○ MH-S		Maintenance Hole (Sanitary)
□ CB		Catch Basin
○ LP		Utility Pole
○ B		Bollard
+ 65.00		Location of Elevations
+ 65.00		Top of Concrete Curb Elevation
T/G		Top of Grate
CRW		Concrete Retaining Wall
SRW		Stone Retaining Wall
TRW		Timber Retaining Wall
CLF		Chain Link Fence
BF		Board Fence
EOA		Edge of Asphalt
C/L		Centreline
— OHW —		Overhead Wires
— — —		Property Line
HW		Highest Wire
LW		Lowest Wire

Committee of Adjustment
 Received | Reçu le
 2023-07-14
 City of Ottawa | Ville d'Ottawa
 Comité de dérogation



Bearings are grid, derived from Can-Net 2016 Real Time Network GPS observations and are referenced to Specified Control Points 01919680005 and 01919680105, MTM Zone 9 (76°30' West Longitude) NAD-83 (original).

For bearing comparisons, a rotation of 0°01'20\"/>

ELEVATION NOTES

- Elevations shown are geodetic, derived from City of Ottawa Monument No. 3906, Index 118 with a published elevation of 67.24m and are referred to the CGVD28 geodetic datum.
- It is the responsibility of the user of this information to verify that the job benchmark has not been altered or disturbed and that its relative elevation and description agrees with the information shown on this drawing.

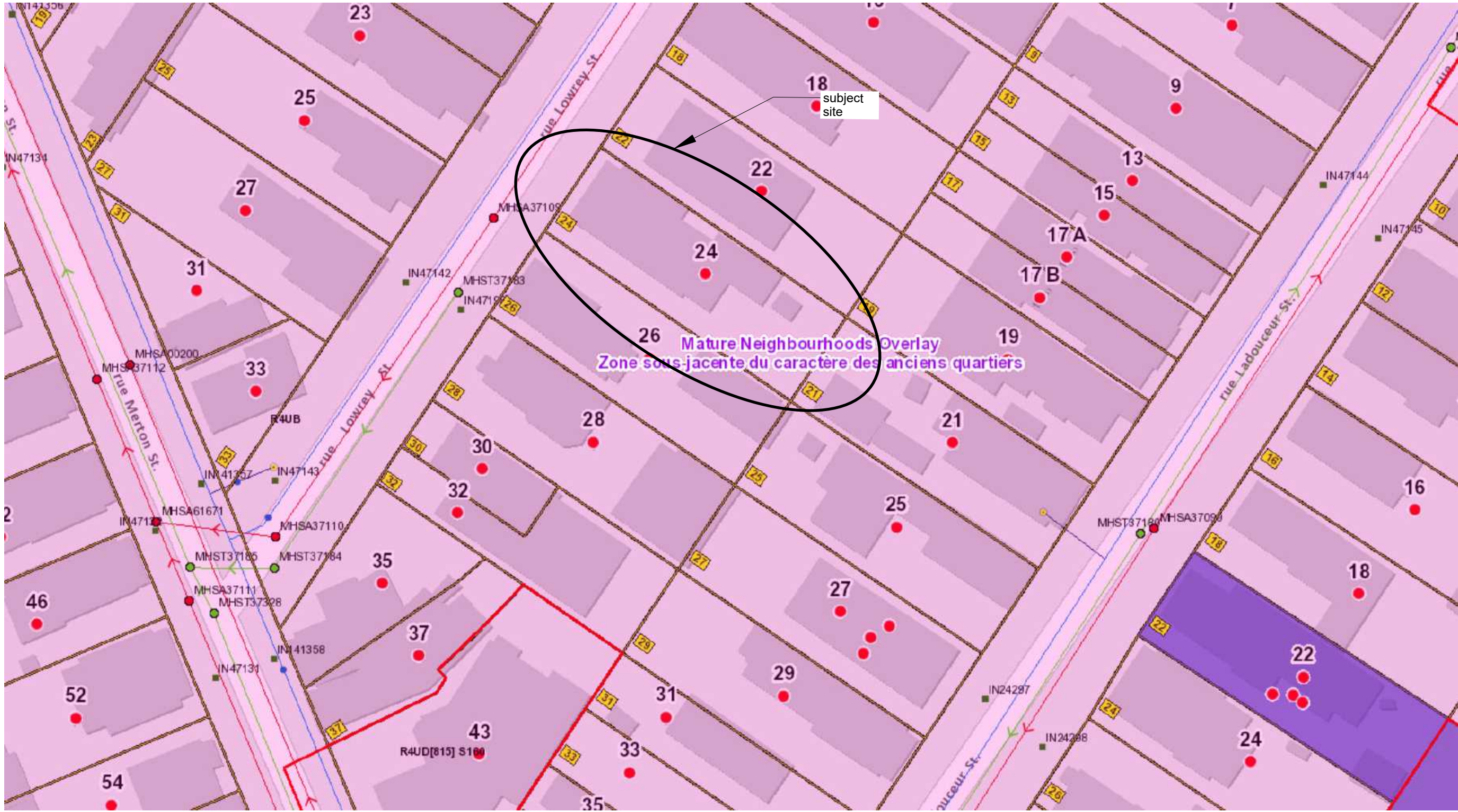
UTILITY NOTES

- This drawing cannot be accepted as acknowledging all of the utilities and it will be the responsibility of the user to contact the respective utility authorities for confirmation.
- Only visible surface utilities were located.
- A field location of underground plant by the pertinent utility authority is mandatory before any work involving breaking ground, probing, excavating etc.



THIS DOCUMENT
CONTAINS
CONFIDENTIAL AND
PROPRIETARY
INFORMATION THAT
CANNOT
BE REPRODUCED OR
DIVULGED, IN WHOLE
OR IN PART, WITHOUT
WRITTEN
AUTHORIZATION
FROM Modulink

Copyright registration



Modulink & Design
Planning & Design
331 Osgoode Street
Apt 3, Ottawa, Ont.
K1N 1H2

CLIENT

PROJECT
24 Lowrey

ISSUE

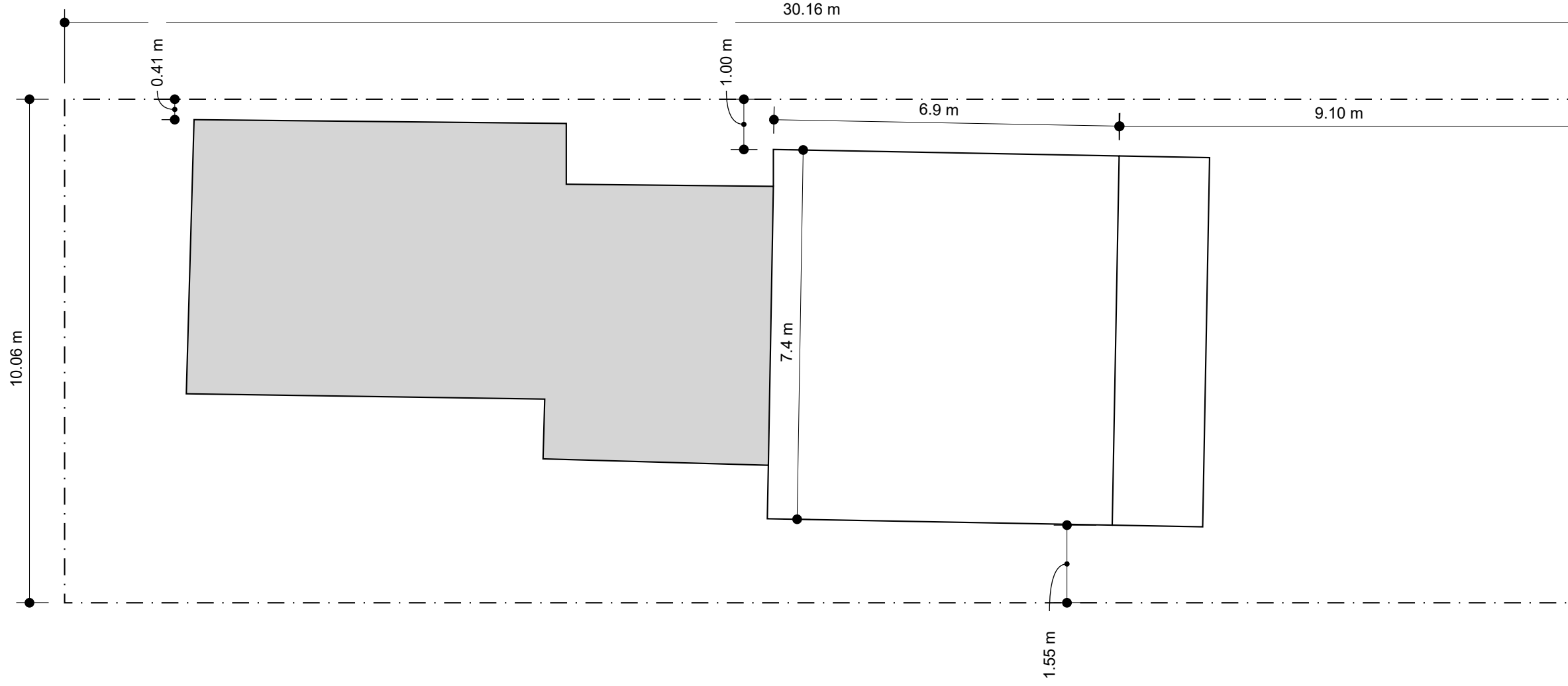
July 14, 2023
Neighbourhood

A.01

Scale
1:2000

PROJECT NO.
2023

DRAWN BY
CJ



THIS DOCUMENT
CONTAINS
CONFIDENTIAL AND
PROPRIETARY
INFORMATION THAT
CANNOT
BE REPRODUCED OR
DIVULGED, IN WHOLE
OR IN PART, WITHOUT
WRITTEN
AUTHORIZATION
FROM Modulink

Copyright registration

Modulink & Design
Planning & Design
331 Osgoode Street
Apt 3, Ottawa, Ont.
K1N 1H2

CLIENT

PROJECT
24 Lowrey

ISSUE

July 14, 2023
Site Basics

DRAWN BY
CJ

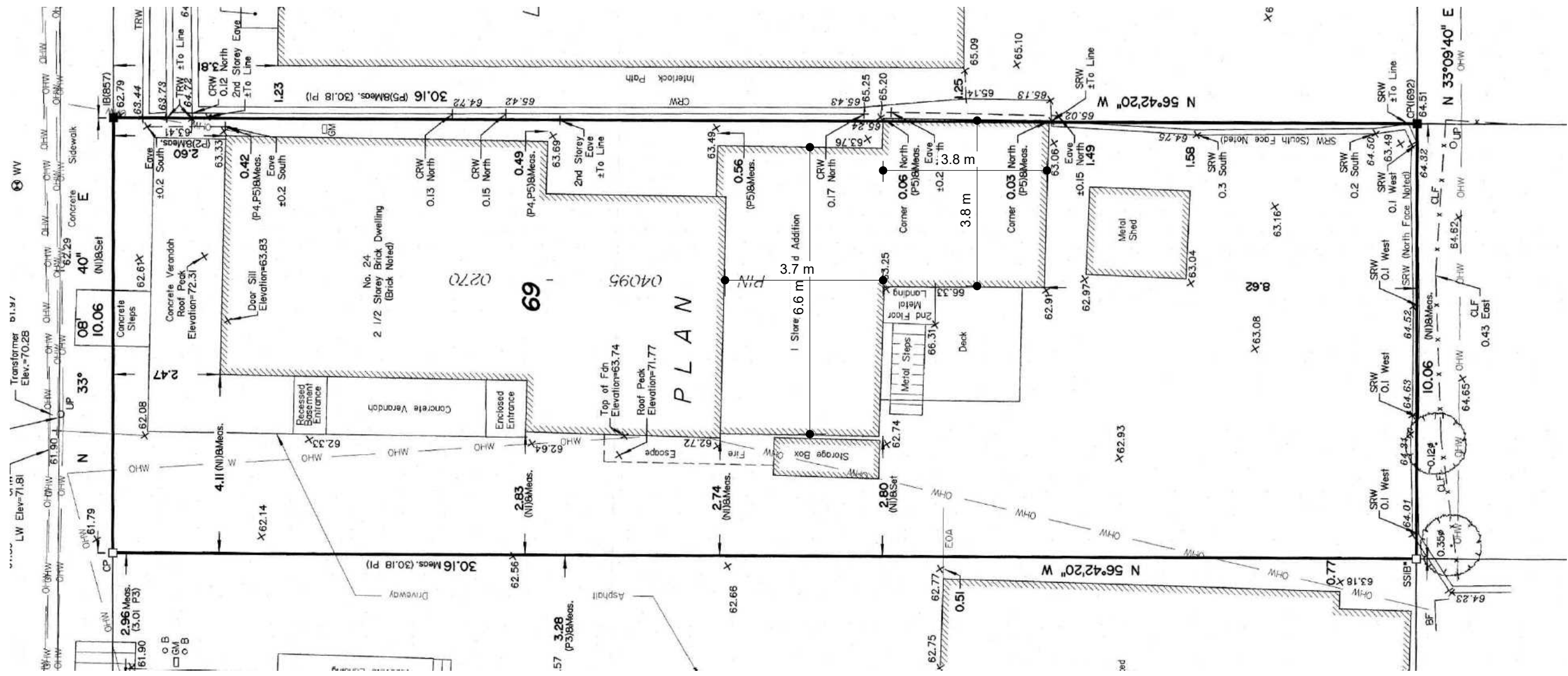
Scale
1:150

PROJECT NO.
2023



THIS DOCUMENT
CONTAINS
CONFIDENTIAL AND
PROPRIETARY
INFORMATION THAT
CANNOT
BE REPRODUCED OR
DIVULGED, IN WHOLE
OR IN PART, WITHOUT
WRITTEN
AUTHORIZATION
FROM Modulink

Copyright registration



July 14, 2023
Survey

A.03

**Modulink
Planning & Design**
331 Osgoode Street
Apt 3, Ottawa, Ont.
K1N 1H2

CLIENT
Scale
1:100

PROJECT
24 Lowrey
PROJECT NO.
2023

ISSUE
DRAWN BY
CJ

dims to 0.1m

front elevation recessed more than 0.6m

7.4 m

proposed addition

Front Elevation
Area 71.0 sqm
Elevation recessed more than 0.6m 34.9 sqm
37%

gable side facing roof

Front Façade
Area 45 sqm
Window Area 6.3 sqm
14%

front façade variance

wrap around porch roof



wrap around deck

9.6 m

3.5 m

0.8 m

1.2 m

5.7 m

0.9 m

1.6 m

0.9 m

6.1 m

1.1 m

1.6 m

0.6 m

1.2 m



THIS DOCUMENT
CONTAINS
CONFIDENTIAL AND
PROPRIETARY
INFORMATION THAT
CANNOT
BE REPRODUCED OR
DIVULGED, IN WHOLE
OR IN PART, WITHOUT
WRITTEN
AUTHORIZATION
FROM Modulink

Copyright registration

Modulink
Planning & Design
331 Osgoode Street
Apt 3, Ottawa, Ont.
K1N 1H2

CLIENT

PROJECT
24 Lowrey

ISSUE
CJ

DRAWN BY
CJ

PROJECT NO.
2023

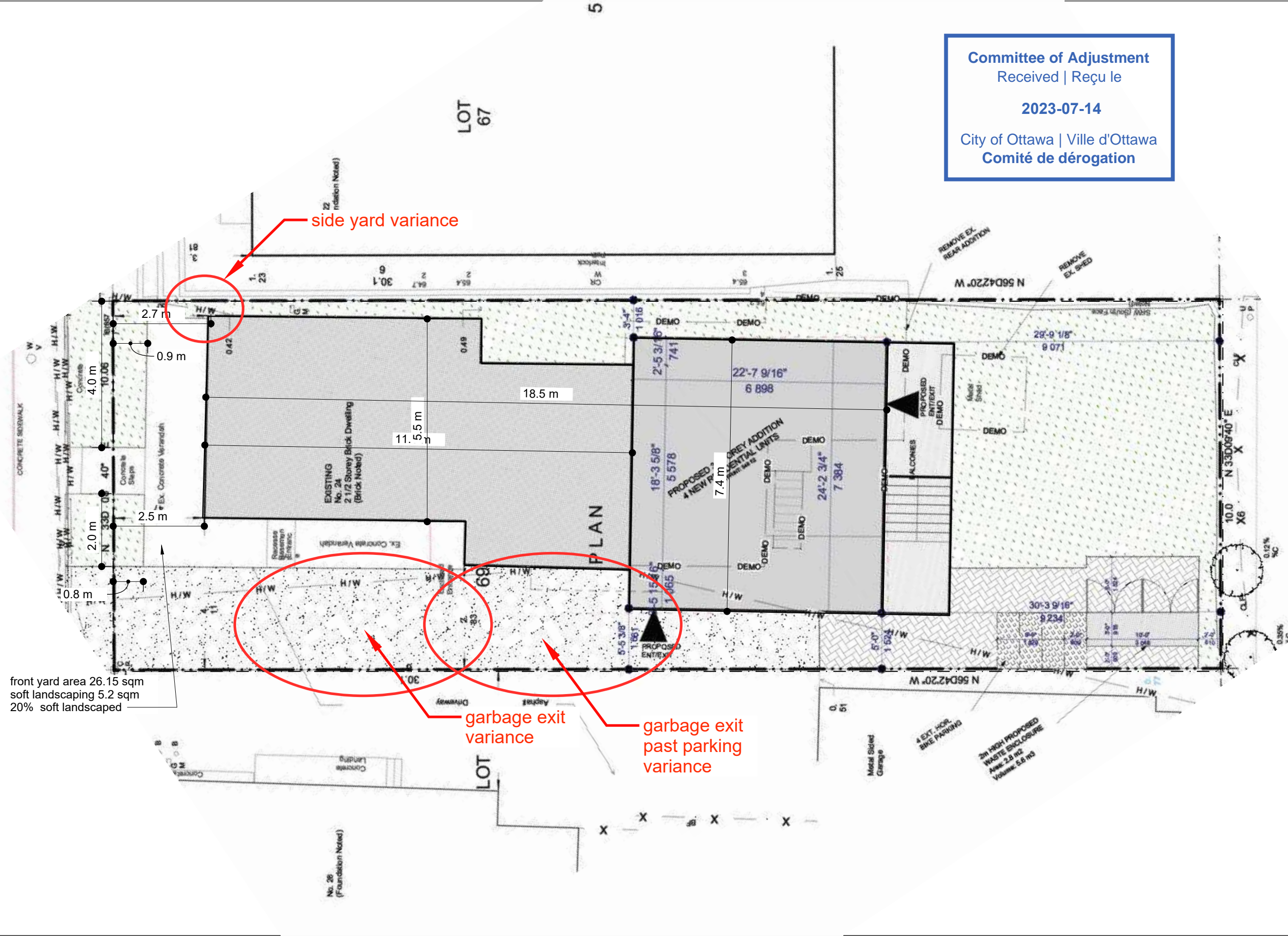
Scale
1:100

July 14, 2023
Elevation

A.04

LOT 67

Committee of Adjustment
 Received | Reçu le
2023-07-14
 City of Ottawa | Ville d'Ottawa
 Comité de dérogation



side yard variance

garbage exit variance

garbage exit past parking variance

front yard area 26.15 sqm
 soft landscaping 5.2 sqm
 20% soft landscaped



THIS DOCUMENT
 CONTAINS
 CONFIDENTIAL AND
 PROPRIETARY
 INFORMATION THAT
 CANNOT
 BE REPRODUCED OR
 DIVULGED, IN WHOLE
 OR IN PART, WITHOUT
 WRITTEN
 AUTHORIZATION
 FROM Modulink

Copyright registration

Modulink & Design
 Planning & Design
 331 Osgoode Street
 Apt 3, Ottawa, Ont.
 K1N 1H2

ISSUE PROJECT
 24 Lowrey
 DRAWN BY
 CJ PROJECT NO.
 2023

July 14, 2023
 Site Arch

A.05

Scale 1:100