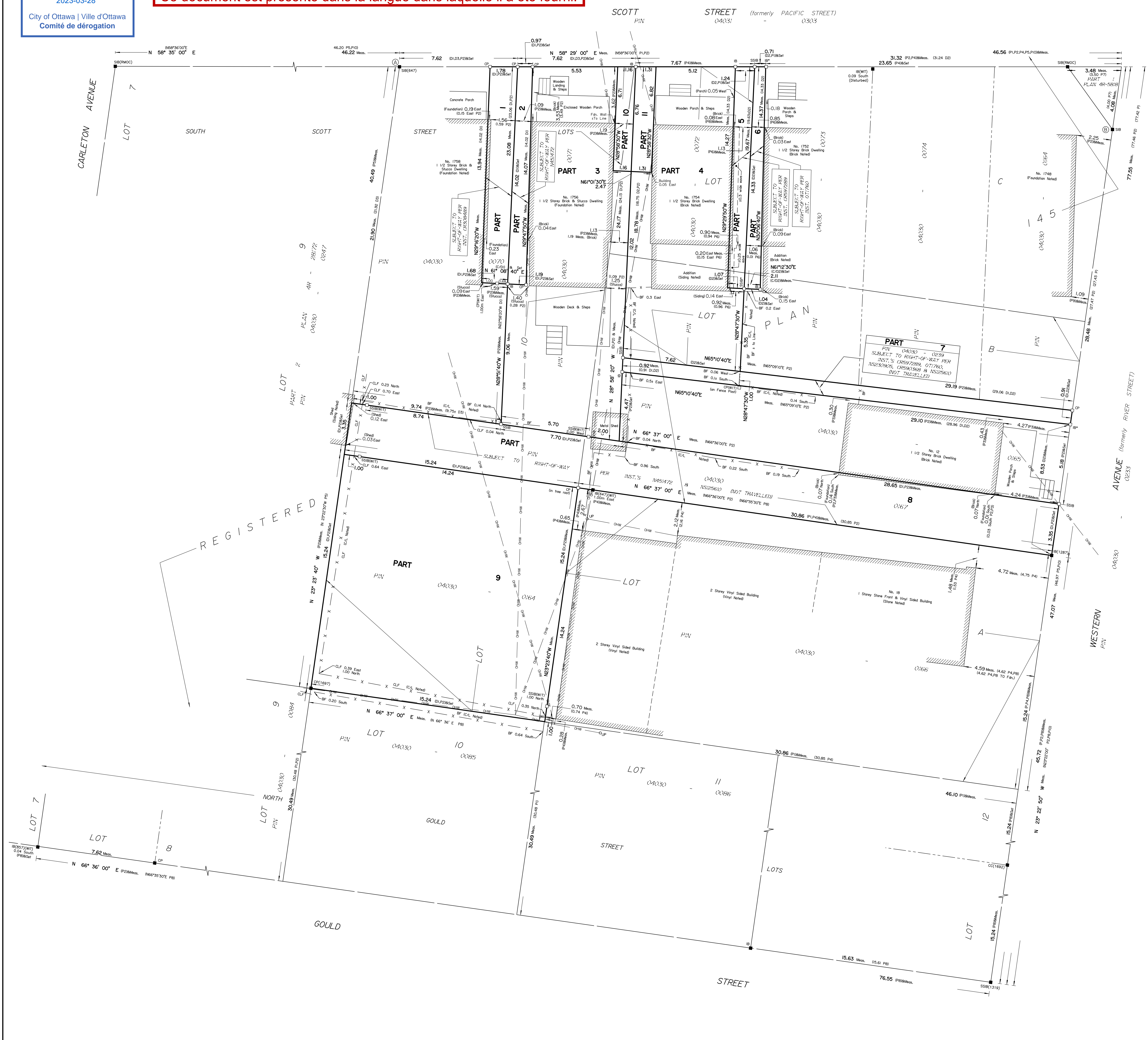
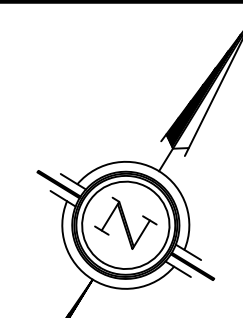


This document is presented in the language it was provided.
Ce document est présenté dans la langue dans laquelle il a été fourni.



PART	LOT	PLAN	PIN
1	PART OF LOT 10		PART OF 04030-0070
2	PART OF LOTS 10, 'B' & 'C'		PART OF 04030-0071
3	PART OF LOTS 'B' & 'C'		PART OF 04030-0072
4	PART OF LOT 'B'	145	PART OF 04030-0073
5	PART OF LOTS 'B' & 'C'		ALL OF 04030-0239
6	PART OF LOT 'B'		ALL OF 04030-0167
7	PART OF LOTS 'B' & 'C'		ALL OF 04030-0164
8	PART OF LOT 10		PART OF 04030-0071
9	PART OF LOTS 'C' & '10		PART OF 04030-0071
10	PART OF LOT 'C'		PART OF 04030-0072
11	PART OF LOT 'C'		PART OF 04030-0072

Part 1: Subject to Right-of-Way, Inst. CR308489
Part 2: Subject to Right-of-Way, Inst. N451472
Part 3: Subject to Right-of-Way, Inst. CR57289
Part 4: Subject to Right-of-Way, Inst. OT1760
Part 5: Subject to Right-of-Way, Inst. CR597289
Part 6: Subject to Right-of-Way, Inst. OT1760, NS230905, CR593088 & NS125610
Part 7: Subject to Right-of-Way, Inst. NS451472 & NS125610
Part 8: Subject to Right-of-Way, Inst. NS451472 & NS125610
Parts 2, 3 & 10 Comprise all of PIN 04030-0071
Parts 4, 5 & 11 Comprise all of PIN 04030-0072

PLAN OF SURVEY OF
PART OF LOT 10
SOUTH SCOTT STREET LOTS
AND
PART OF LOTS B & C
REGISTERED PLAN 145
CITY OF OTTAWA
Surveyed by Annis, O'Sullivan, Vollebek Ltd.

Scale 1:100
The intended plot size of this plan is 914 mm in width by 610 mm in height when plotted at a scale of 1:100.

Metric
DISTANCES AND COORDINATES SHOWN ON THIS PLAN ARE IN METRES AND CAN BE CONVERTED TO FEET BY DIVIDING BY 0.3048.

Surveyor's Certificate
I CERTIFY THAT:
1. This survey and plan are correct and in accordance with the Surveys Act, the Surveyors Act and the Land Titles Act and the regulations made under them.
2. The survey was completed on the 1st day of June, 2022.

Date _____
T. Hartwick
Ontario Land Surveyor

This plan relates to AOLS Plan Submission number: V-27630

- Notes & Legend**
- Denotes Survey Monument Planted
 - Survey Monument Found
 - SIB Standard Iron Bar
 - SSIB Short Standard Iron Bar
 - IB Iron Bar
 - CP Concrete Pin
 - CC Cut Cross
 - * 0.30 Length
 - (WIT) Witness
 - (AOG) Annis, O'Sullivan, Vollebek Ltd.
 - Meas. Measured
 - (P) Registered Plan 145
 - (P1) (1473) Plan dated May 29, 1997
 - (P2) (725) Plan dated Nov. 19, 1985
 - (P3) (857) Plan dated Aug. 2, 1983
 - (P4) (647) Plan dated April 8, 2005
 - (P5) Plan 4R-28172
 - (P6) (1175) Plan dated Nov. 16, 2015
 - (P7) Plan 4R-5818
 - (P8) (1692) Plan dated Sept. 20, 2021
 - (P9) (647) Plan dated July 19, 1985
 - (P10) Plan 4R-10905
 - (D1) Inst. N451472
 - (D2) Inst. CR597289
 - (D3) Inst. CR308489
 - CLF Calculated per
 - CLF Chain Link Fence
 - BF Board Fence
 - UP Utility Pole
 - Ø Diameter
 - C/L Centreline
 - Property Line
 - Fdn. Foundation

Distances shown on this plan are ground distances and can be converted to grid distances by multiplying by the combined scale factor of 0.999934.

Bearings are grid, derived from Can-Net 2016 Real Time Network GPS observations on reference points A and B, shown hereon, having a bearing of N63°30'00"E and are referenced to Specified Control Points 01919680005 and 01919680105, MTM Zone 9 (76°30' West Longitude) NAD-83 (original).

For bearing comparisons, a rotation of 0°00'50" counter-clockwise was applied to bearings on plan (P2).

Coordinates are derived from Can-Net 2016 Real Time Network GPS observations referenced to Specified Control Points 01919680005 and 01919680105, MTM Zone 9 (76°30' West Longitude) NAD-83 (original).

Coordinate values are to urban accuracy in accordance with O. Reg. 216/10.

01919680005	Northing	5027191.26	Eastings	361466.76
01919680105	Northing	5024915.16	Eastings	373971.65
Point A	Northing	5029230.53	Eastings	364166.40
Point B	Northing	5029251.13	Eastings	364207.72

Caution: Coordinates cannot, in themselves, be used to re-establish corners or boundaries shown on this plan.