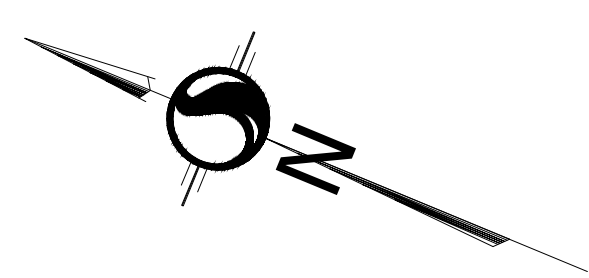


5 July 2023 10:54 AM

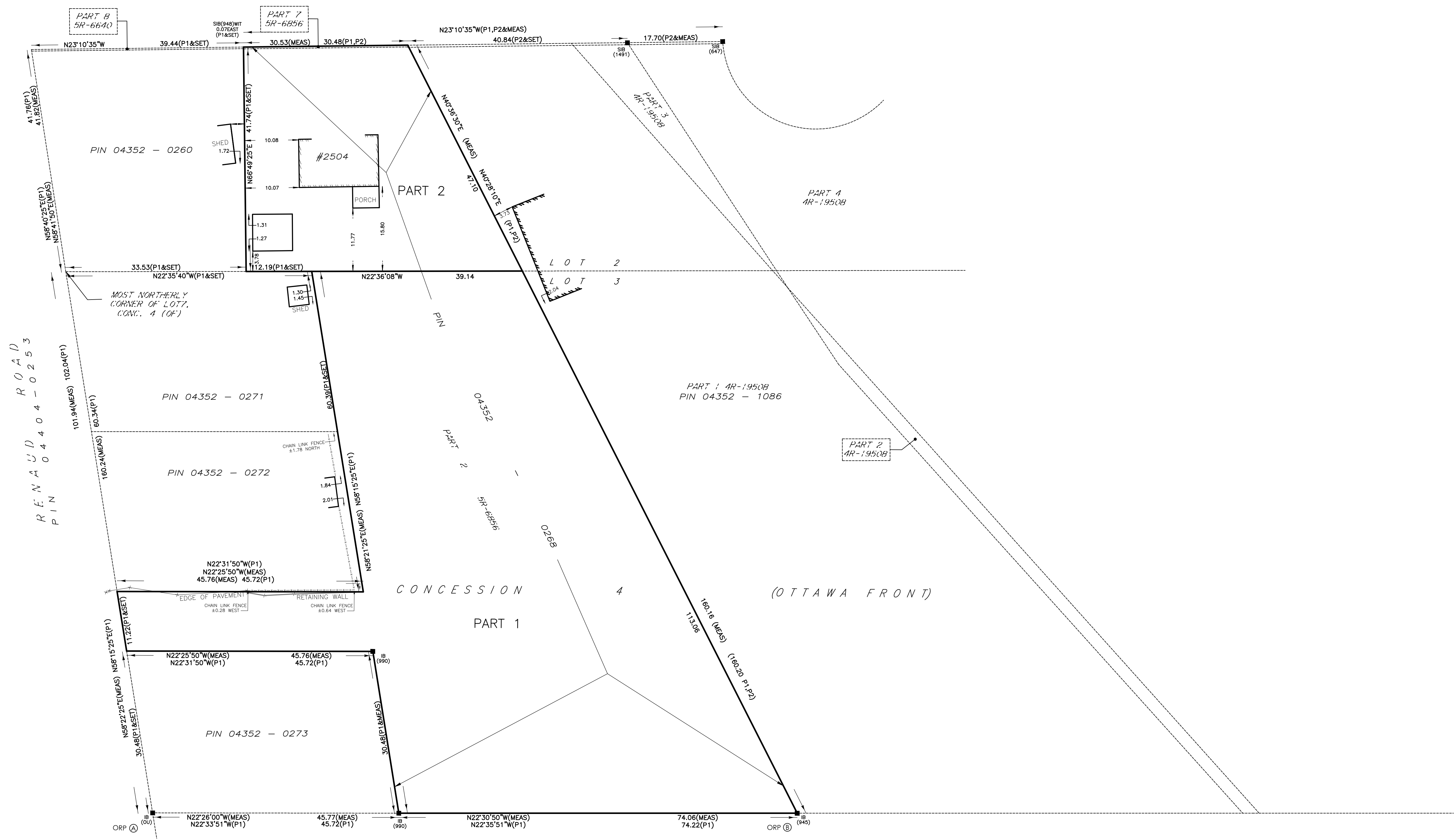
SCHEDULE				
PART	LOT	CONCESSION	PIN	AREA (sq.m.)
1	Part of 2	4 (OF)	ALL OF 04552-0268	6123.9
2	Part of 3			1716.0

This document is presented in the language it was provided.
Ce document est présenté dans la langue dans laquelle il a été fourni.

Committee of Adjustment
Received | Reçu le
2023-07-21
City of Ottawa | Ville d'Ottawa
Comité de dérogation



WHITE STREET
PIN 04352-0266



PLAN OF SURVEY OF
**PART OF LOTS 2 & 3
CONCESSION 4 (OTTAWA FRONT)**
(GEOGRAPHIC TOWNSHIP OF GLOUCESTER)

CITY OF OTTAWA
Scale 1:400
Stantec Geomatics Ltd.
THE INTENDED PLOT SIZE OF THIS PLAN IS 91.4mm IN WIDTH BY 609mm IN HEIGHT WHEN PLOTTED AT A SCALE OF 1:400.

METRIC CONVERSION
DISTANCES AND COORDINATES SHOWN ON THIS PLAN ARE IN METRES AND CAN BE CONVERTED TO FEET BY DIVIDING BY 0.3048

GRID SCALE CONVERSION
DISTANCES ARE GROUND AND CAN BE CONVERTED TO GRID BY MULTIPLYING BY THE COMBINED SCALE FACTOR OF 0.99992.

BEARING NOTE
BEARINGS ARE GRID. FOR COMPARISON PURPOSE, A ROTATION OF 0°14'24" CLOCKWISE WAS APPLIED TO P1 & P2

LEGEND

SYMBOL	DENOTES	FOUND MONUMENTS
■	SET MONUMENTS	SET MONUMENTS
□	IRON BAR	IRON BAR
IBO	ROUND IRON BAR	ROUND IRON BAR
SIB	STANDARD IRON BAR	STANDARD IRON BAR
SSB	SHORT STANDARD IRON BAR	SHORT STANDARD IRON BAR
CC	CUT CROSS	CUT CROSS
CP	CONCRETE PIN	CONCRETE PIN
WIT	WITNESS	WITNESS
PIN	PROPERTY IDENTIFICATION NUMBER	PROPERTY IDENTIFICATION NUMBER
MEAS	MEASURED	MEASURED
PROP	PROPORTIONED	PROPORTIONED
OU	ORIGIN UNKNOWN	ORIGIN UNKNOWN
SG	STANTEC GEOMATICS LTD.	STANTEC GEOMATICS LTD.
P1	PLAN 5R-8656	PLAN 5R-8656
P2	PLAN 4R-19508	PLAN 4R-19508

BEARING NOTE
BEARINGS ARE GRID. DERIVED FROM THE CAN-NET VRS NETWORK OBSERVATIONS ON NCC HORIZONTAL CONTROL MONUMENTS 19773035 AND 19680191. CENTRAL MERIDIAN 78°30' WEST LONGITUDE WITH ZONE 9, NAD83 (ORIGINAL).
OBSERVED REFERENCE POINTS DERIVED FROM THE CAN-NET VRS NETWORK GPS 09857805 (NAD83) AND 02634422 (NAD83) HORIZONTAL CONTROL MONUMENTS 19773035 AND 19680191. 19680191 HAS A BEARING OF 368864 WEST LONGITUDE WITH ZONE 9, NAD83 (ORIGINAL). COORDINATES TO URBAN ACCURACY PER SEC 14(2) OF O. REG. 216/10

POINT ID	NORTHING	EASTING
Ⓐ	5033244.62	382662.94
Ⓑ	5033133.89	382708.76

COORDINATES CANNOT, IN THEMSELVES, BE USED TO RE-ESTABLISH CORNERS OR BOUNDARIES SHOWN ON THIS PLAN.

SURVEYOR'S CERTIFICATE
I CERTIFY THAT:
1. THIS SURVEY AND PLAN ARE CORRECT AND IN ACCORDANCE WITH THE SURVEYS ACT, THE SURVEYORS ACT AND THE LAND TITLES ACT AND THE REGULATIONS MADE UNDER THEM.
2. THE SURVEY WAS COMPLETED ON THE 6th DAY OF NOVEMBER, 2021.

DATE _____ FRANCIS LAU
ONTARIO LAND SURVEYOR

THIS PLAN OF SURVEY RELATES TO AOLS PLAN SUBMISSION FORM NUMBER #####.

Stantec Geomatics Ltd.
CANADA LAND SURVEYORS
ONTARIO LAND SURVEYORS
1331 CLYDE AVENUE, SUITE 400
OTTAWA, ONTARIO, K2C 3G4
TEL. 613.722.4420 FAX. 613.722.2799
stantec.com

DRAWN: ZF CHECKED:CK/KJ PM: KJ FIELD: ESLG PROJECT NO.: 161614476-111

OBSERVED REFERENCE POINTS DERIVED FROM THE CAN-NET VRS NETWORK GPS OBSERVATIONS ON NCC HORIZONTAL CONTROL MONUMENTS 19773035 AND 19680191. CENTRAL MERIDIAN 78°30' WEST LONGITUDE WITH ZONE 9, NAD83 (ORIGINAL). COORDINATES TO URBAN ACCURACY PER SEC 14(2) OF O. REG. 216/10

POINT ID	NORTHING	EASTING
Ⓐ		
Ⓑ		

COORDINATES CANNOT, IN THEMSELVES, BE USED TO RE-ESTABLISH CORNERS OR BOUNDARIES SHOWN ON THIS PLAN.

PART 2 AR-29735
PIN 04352-2624