

Committee of Adjustment
Received | Reçu le

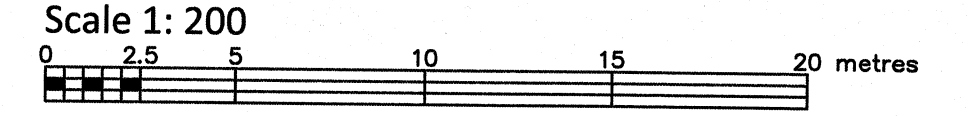
Revised | Modifié le : 2023-08-28

City of Ottawa | Ville d'Ottawa
Comité de dérogation

TOPOGRAPHIC PLAN OF SURVEY OF

**LOT 3
JUDGE'S PLAN 652
CITY OF OTTAWA**

FARLEY, SMITH & DENIS SURVEYING LTD. 2022



Metric Note
Distances on this plan are in metres and can be converted to feet by dividing by 0.3048.

Bearing Note
Bearings hereon are grid bearings derived from the Can-Net Real Time Network and are referred to the Central Meridian of MTM Zone 9 (76°30' West Longitude) Nad-83 (Original).

For bearing comparisons, a rotation of 0°43'50" counter-clockwise was applied to bearings on P1.

Elevation Notes
1. Elevations shown are geodetic and are referred to Geodetic Datum CGVD-1928-1978. (Monument No. 198434761)
2. It is the responsibility of the user of this information to verify that the job benchmark has not been altered or disturbed and that its relative elevation and description agrees with the information shown on this drawing.

Utility Notes

- This drawing cannot be accepted as acknowledging all of the utilities and it will be the responsibility of the user to contact the respective utility authorities for confirmation.
- Only visible surface utilities were located.
- Underground utility data derived from City of Ottawa utility sheet reference: A-24-15, A-24-16, G-36-1, 77-4993-2.
- Sanitary and storm sewer grades and inverts were compiled from: Field measurement & City of Ottawa Utility Sheets.
- A field location of underground plant by the pertinent utility authority is mandatory before any work involving breaking ground, probing, excavating etc.

Notes & Legend

Denotes	
—	Survey Monument Planted
—	Survey Monument Found
SIB	Standard Iron Bar
IB	Iron Bar
Meas	Measured
(P1)	Registered Plan M-272
(P2)	Registered Plan M-272
(P3)	Plan by (AOG) dated August 21, 2009 (Job No. 10419-09)
(P4)	Plan by (990) dated May 9, 1963
(P5)	Plan 5R-7820
(P6)	Plan 4R-3262
(N1)	Notes by (647) dated February 15, 1981
(N2)	Notes by (647) dated July 19, 1983
(N3)	Notes by (647) dated August 1984
OH-ST	Maintenance Hole (Storm)
OH-S	Maintenance Hole (Sanitary)
VC	Valve Chamber (Watermain)
ST	Underground Storm Sewer
S	Underground Sanitary Sewer
W	Underground Water
P	Underground Power
G	Underground Gas
OH	Overhead Wires
U/P	Utility Pole
AN	Anchor
LS	Light Standard
CB	Catch Basin
GM	Gas Meter
AC	Air Conditioner
CLF	Chain Link Fence
BF	Board Fence
MF	Metal Fence
SRW	Stone Retaining Wall
IRW	Interlock Retaining Wall
Inv.	Invert
T/G	Top of Grate
T/P	Top of Pipe
U/Eave	Underside of Eave
TpFdn	Top of Foundation
EL	Elevation
C/L	Centreline
+65.00	Location of Elevations
+65.00	Top of Concrete Curb Elevation
—	Property Line
—	Deciduous Tree - The Symbol shown denotes location and trunk diameter only. Size of its root system/overhead canopy may be smaller/larger than the symbol size depicted on this plan.
—	Coniferous Tree - The Symbol shown denotes location and trunk diameter only. Size of its root system/overhead canopy may be smaller/larger than the symbol size depicted on this plan.

Site Area=1935.9 sq.m.

WARNING: NO PERSON MAY COPY, REPRODUCE, DISTRIBUTE OR ALTER THIS PLAN IN WHOLE OR IN PART WITHOUT THE WRITTEN PERMISSION OF FARLEY, SMITH & DENIS SURVEYING LTD. © FARLEY, SMITH & DENIS SURVEYING LTD., 2022.

Surveyor's Certificate

- I certify that:
- This survey and plan are correct and in accordance with the Surveys Act, the Surveys Act and the Regulations made under them.
 - The survey was completed on the 12th day of October, 2022.

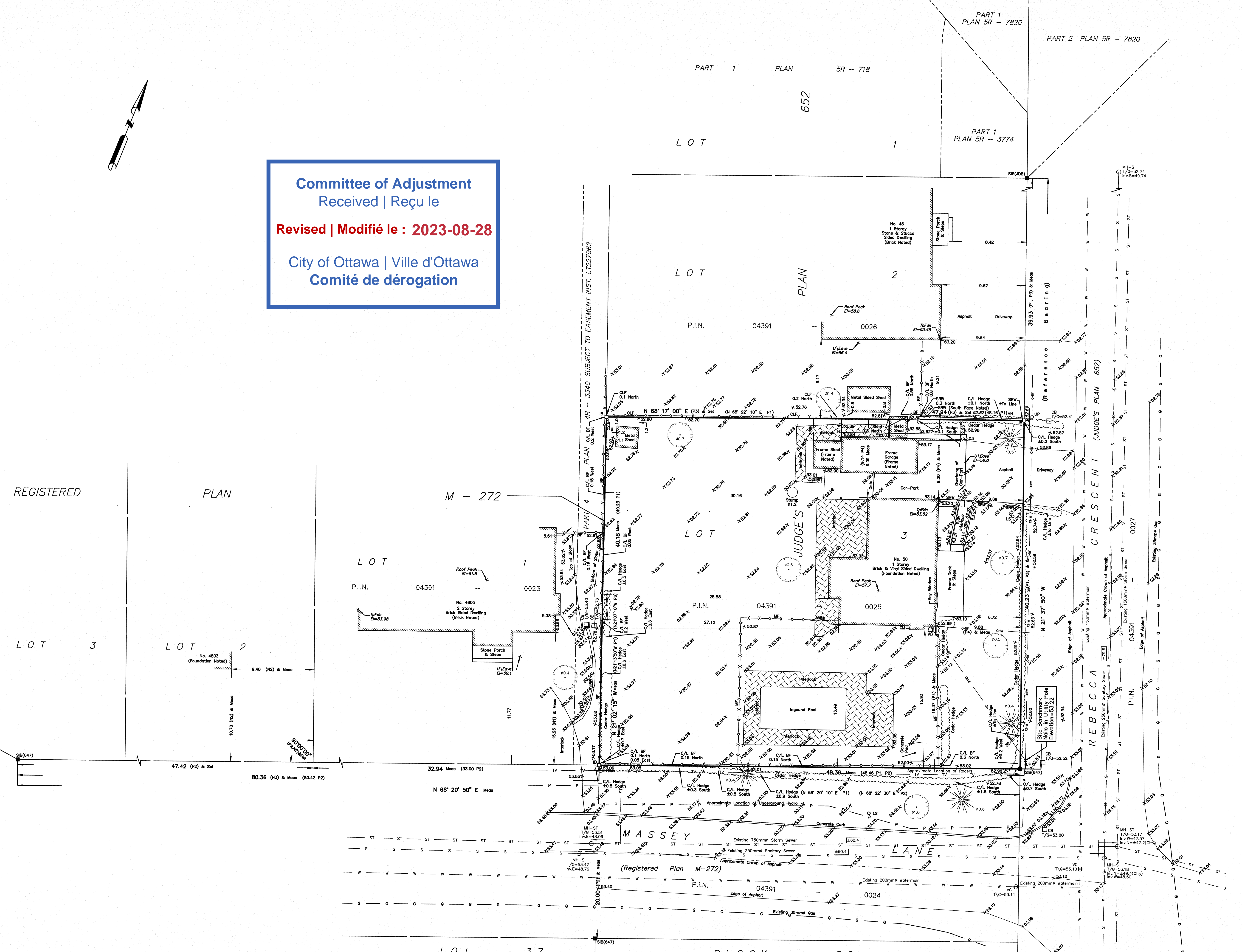
Date: Oct 14/2022

Signature: Emad Alrefaai
Ontario Land Surveyor

This plan of survey relates to AOLS Plan Submission Form Number V-32861
FARLEY, SMITH & DENIS SURVEYING LTD.

ONTARIO LAND SURVEYORS
CANADA LAND SURVEYORS

Unit 275, 30 COLONNADE ROAD, OTTAWA, ONTARIO K2E 7J6
TEL: (613) 727-8226 E-mail: fssurveyors@bellnet.ca



REGISTERED PLAN

LOT 3 LOT 2

M - 272

LOT 37 REGISTERED PLAN BLOCK 38 M - 272