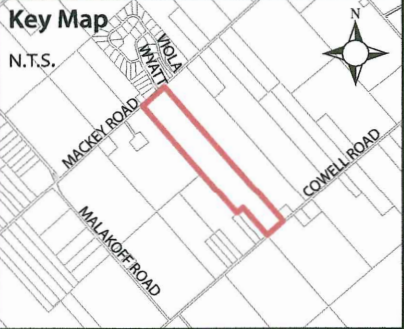


Chiasson and Villeneuve Severance Sketch

2886 Mackey Road
Pt. Lot 4, Concession 3
Geographic Township of Marlborough
CITY OF OTTAWA



Legend

- Subject Lands
- Non-Evaluated Wetlands
- Significant Woodlands
- Moderate Wildland Fire
- Watercourse
- Buildable Area

Committee of Adjustment
Received | Reçu le
2023-08-15
City of Ottawa | Ville d'Ottawa
Comité de dérogation

Notes

1. Locations for the wetlands, watercourse and significant woodlands derived from the RVCA Online GIS mapping. Their locations on the sketch are approximate.
2. Location of the wildland fire hazard derived from the GeoOttawa GIS Mapping, while the soil classes derived from AgMaps GIS Mapping, both are approximate.
3. Boundary and dimensions for the subject property derived from GIS mapping and is approximate.

Version Date: July 11, 2023

File No. 23-077

Drawn By: TG

ZANDERPLAN

Your rural land planning experts

40 Sunset Boulevard, Perth, ON K7H 2Y4 613-264-9600

