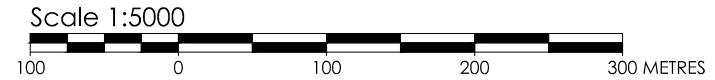


COMPILED PLAN TO ILLUSTRATE
 PART OF THE EAST 1/2 LOT 5
 CONCESSION 11
 GEOGRAPHIC TOWNSHIP OF GOULBOURN
 CITY OF OTTAWA
 STANTEC GEOMATICS LTD.

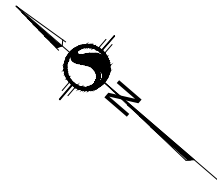


METRIC CONVERSION

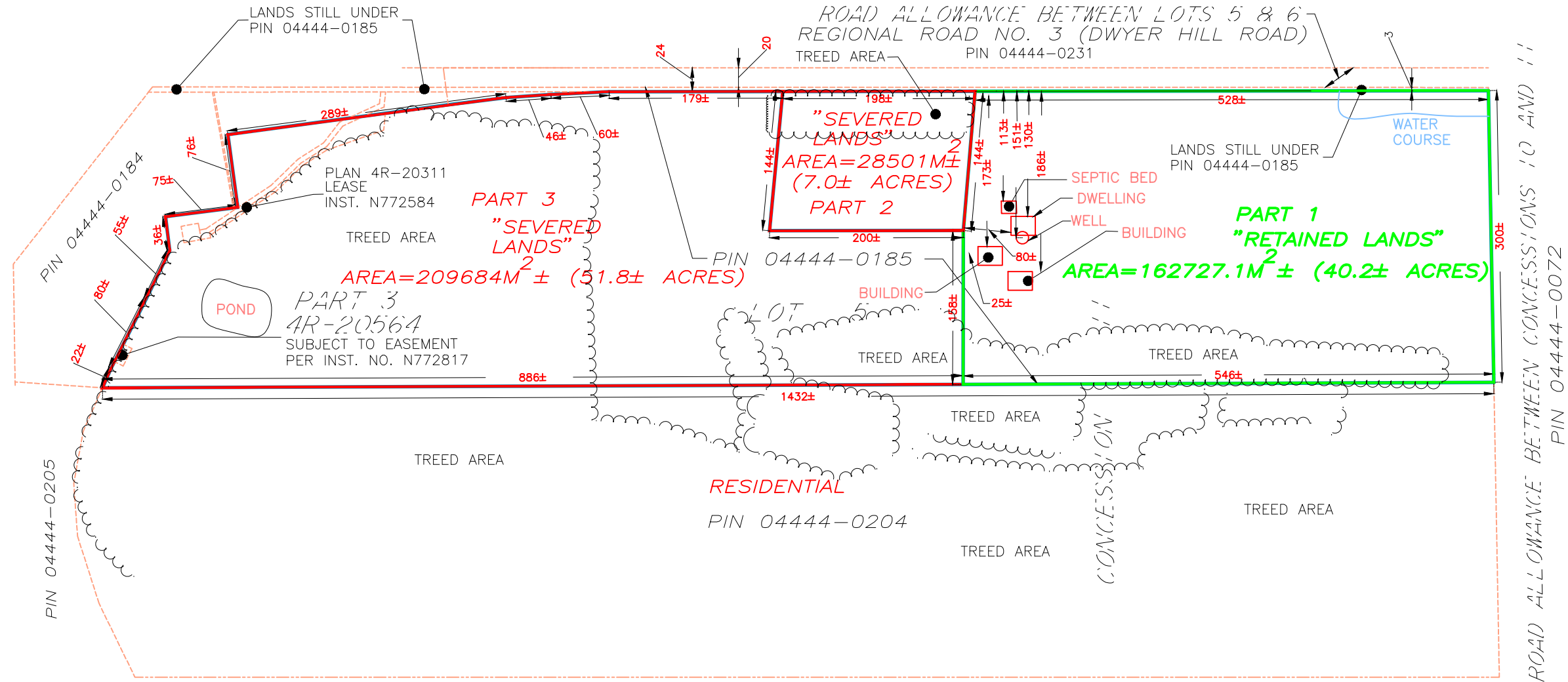
DISTANCES AND COORDINATES SHOWN ON THIS PLAN ARE IN METRES AND CAN BE CONVERTED TO FEET BY DIVIDING BY 0.3048

NOTE

1. DATE: AUGUST 25, 2023
2. SKETCH PREPARED FOR: GRANT HUIBERS
3. THIS PLAN IS COMPILED FROM OFFICE RECORDS.



LOT 6



Committee of Adjustment
 Received | Reçu le

2023-08-31

City of Ottawa | Ville d'Ottawa
 Comité de dérogation

CAUTION: THIS IS NOT A PLAN OF SURVEY AND SHALL NOT BE USED EXCEPT FOR THE PURPOSE INDICATED IN THE TITLEBLOCK.



Stantec Geomatics Ltd.

CANADA AND ONTARIO LAND SURVEYORS
 1331 CLYDE AVENUE, SUITE 400
 OTTAWA, ONTARIO, K2C 3G4
 TEL. (613)722-4420 FAX. (613)722-2799
 stantec.com

© Copyright 2023 Stantec Geomatics Ltd. The reproduction, alteration or use of this REPORT in whole or in part without the express permission of Stantec Geomatics Ltd. is STRICTLY PROHIBITED.

DRAWN: CT CHECKED: GB PM: CT PROJECT No.: 161614742-116