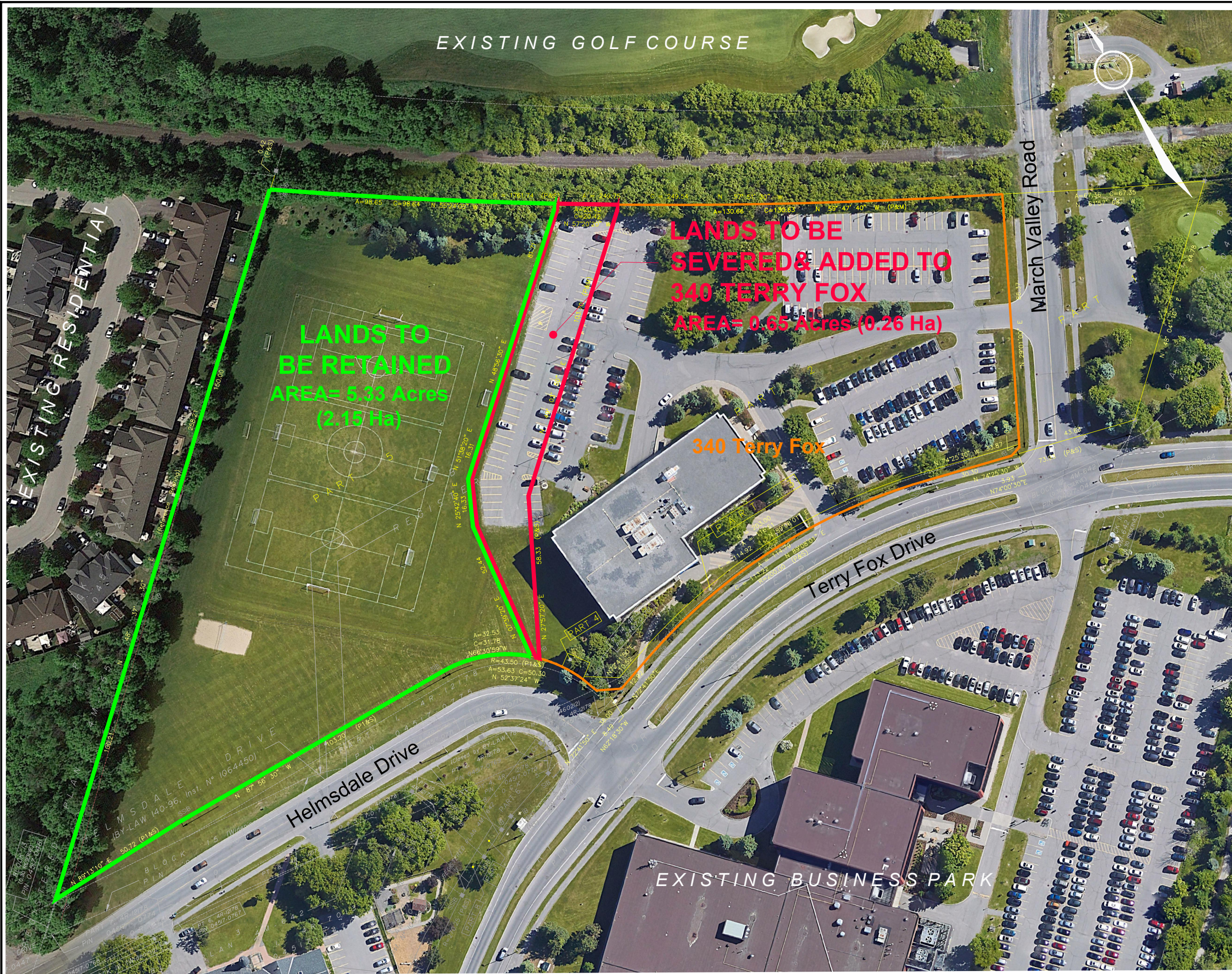


M:\2023\123031\CAD\Planning\Figures\123031-SEV-Rev.dwg, SEV1, Sep 12, 2023 - 1:04pm, wsbs



EXISTING GOLF COURSE

EXISTING RESIDENTIAL

LANDS TO BE RETAINED
AREA= 5.33 Acres
(2.15 Ha)

LANDS TO BE SEVERED & ADDED TO
340 TERRY FOX
AREA= 0.65 Acres (0.26 Ha)

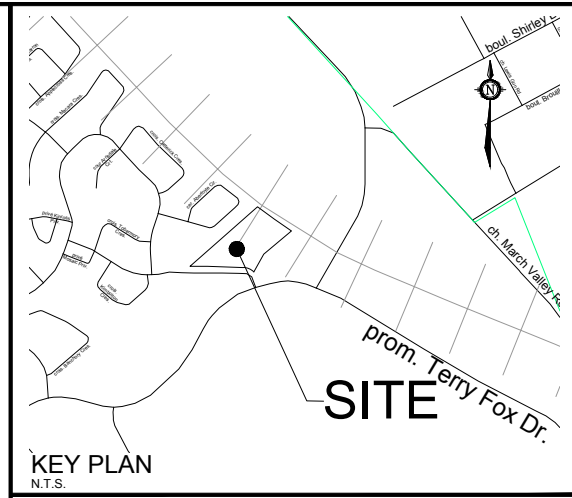
340 Terry Fox

March Valley Road

Terry Fox Drive

Helmsdale Drive

EXISTING BUSINESS PARK

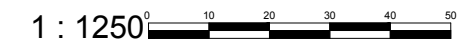


KEY PLAN
N.T.S.

SEVERANCE APPLICATION

340 TERRY FOX DRIVE

PART OF BLOCK 4
REGISTERED PLAN 4M-642 AND
PART OF LOT 9
CONCESSION 4
Geographic Township of March
CITY OF OTTAWA



No.	REVISION	DATE	BY
2.	REVISED LEGAL	SEPT 12/23	JL
1.	ISSUED FOR SEVERANCE APPLICATION	APR 05/23	JL

NOVATECH
Engineers, Planners & Landscape Architects
Suite 200, 240 Michael Cowpland Drive
Ottawa, Ontario, Canada K2M 1P6
Telephone (613) 254-9643
Facsimile (613) 254-5867
Website www.novatech-eng.com

ISSUED
SEPTEMBER, 2023
PROJECT No.
123031
DRAWING No.
123031-SEV