

Figure 1

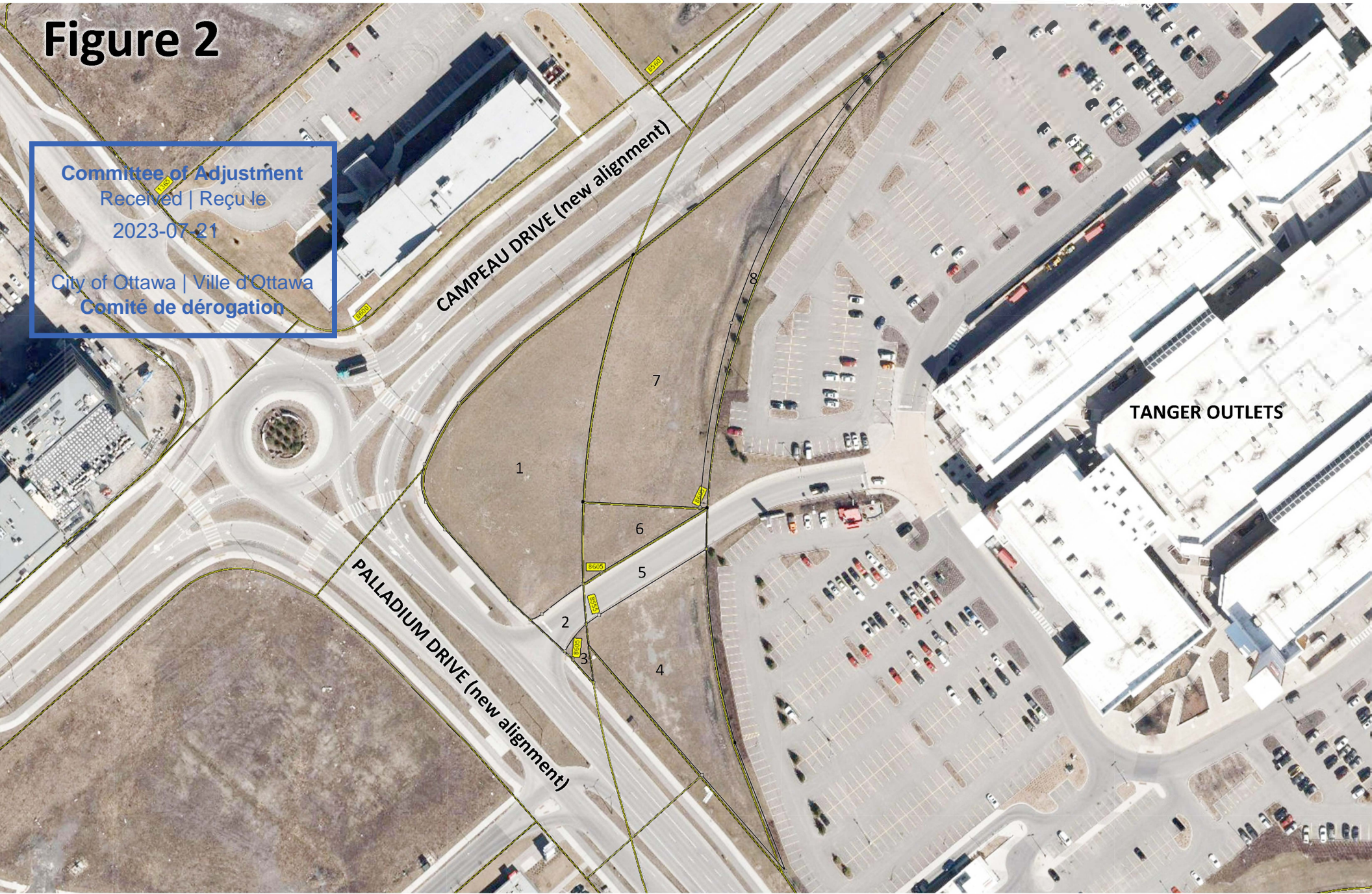
Committee of Adjustment
Received | Reçu le
2023-07-21

City of Ottawa | Ville d'Ottawa
Comité de dérogation



Figure 2

Committee of Adjustment
Received | Reçu le
2023-07-21
City of Ottawa | Ville d'Ottawa
Comité de dérogation



Committee of Adjustment
Received | Reçu
2023-07-21
City of Ottawa | Ville d'Ottawa
Comité de dérogation

1 REQUIRE THIS PLAN TO BE DEPOSITED UNDER THE LAND TITLES ACT.
PLAN 4R-30499
RECEIVED AND DEPOSITED
DATE: Aug 10/17
DATE: August 11, 2017
BRIAN J. WEBSTER
ONTARIO LAND SURVEYOR
BRIAN J. WEBSTER
REGISTRAR FOR THE LAND TITLES DIVISION OF OTTAWA-CARLETON No. 4

SCHEDULE			
PART	LOT/BLOCK	CONCESSION/PLAN	PIN
1			
2	ALL OF 6	4M-1566	ALL OF 04508-0143
3			
4			
5			
6	PART OF 3	1	PART OF 04508-0032
7			
8			PART OF 04508-0108

PARTS 1, 2, AND 3 COMPRISE ALL OF PIN 04508-0143
PARTS 4, 5, AND 6 COMPRISE PART OF PIN 04508-0032
PARTS 7 AND 8 COMPRISE PART OF PIN 04508-0108
PARTS 1, 2, AND 3 ARE SUBJECT TO EASEMENT PER INST. NO. OC1776587

PLAN OF SURVEY of
BLOCK 6 REGISTERED PLAN 4M - 1566
PART OF LOT 3 CONCESSION 1
GEOGRAPHIC TOWNSHIP OF HUNTLEY
CITY OF OTTAWA

Scale 1:500
0 10 20 30 METRES

METRIC CONVERSION
DISTANCES AND COORDINATES SHOWN ON THIS PLAN ARE IN METRES AND CAN BE CONVERTED TO FEET BY DIVIDING BY 0.3048

LEGEND

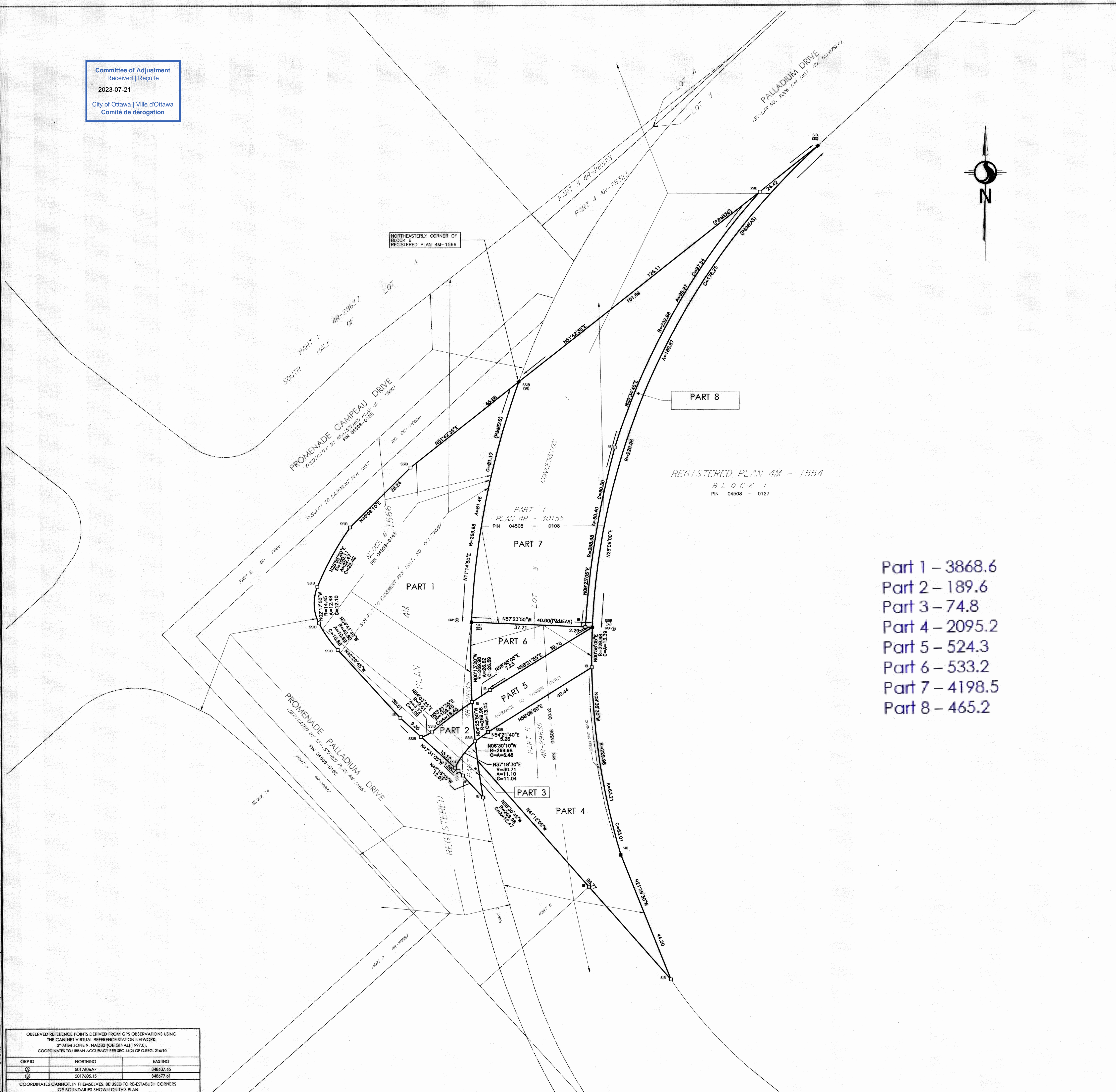
SYMBOL	DENOTES	FOUND MONUMENTS
■	SET MONUMENTS	
IB	IRON BAR	
IBP	ROUND IRON BAR	
SIB	STANDARD IRON BAR	
SSIB	SHORT STANDARD IRON BAR	
CC	CUT CROSS	
CP	CONCRETE PIN	
WIT	WITNESS	
PIN	PROPERTY IDENTIFICATION NUMBER	
MEAS	MEASURED	
PROP	PROPORTIONED	
OU	ORIGIN UNKNOWN	
SG	STANTEC GEOMATICS LTD.	
ORP	OBSERVED REFERENCE POINT	

GRID SCALE CONVERSION
DISTANCES ARE GROUND AND CAN BE CONVERTED TO GRID BY MULTIPLYING BY THE COMBINED SCALE FACTOR OF 0.99994.

BEARING NOTE
BEARINGS ARE GRID, DERIVED FROM THE CAN-NET VRS NETWORK GPS OBSERVATIONS ON NCC HORIZONTAL CONTROL MONUMENTS 19773035 AND 19680191, CENTRAL MERIDIAN, 76° 30' WEST LONGITUDE MTM ZONE 9, NAD83 (ORIGINAL).

19773035 N:5004060.42 E:324888.04
19680191 N:5033564.26 E:388064.94

- Part 1 - 3868.6
- Part 2 - 189.6
- Part 3 - 74.8
- Part 4 - 2095.2
- Part 5 - 524.3
- Part 6 - 533.2
- Part 7 - 4198.5
- Part 8 - 465.2



OBSERVED REFERENCE POINTS DERIVED FROM GPS OBSERVATIONS USING THE CAN-NET VIRTUAL REFERENCE STATION NETWORK:
3° MTM ZONE 9, NAD83 (ORIGINAL) (1997.0)
COORDINATES TO URBAN ACCURACY PER SEC 14(2) OF O. REG. 214/10

ORP ID	NORTHING	EASTING
①	5017406.97	348437.45
②	5017405.15	348477.41

COORDINATES CANNOT, IN THEMSELVES, BE USED TO RE-ESTABLISH CORNERS OR BOUNDARIES SHOWN ON THIS PLAN.

SURVEYOR'S CERTIFICATE
I CERTIFY THAT:
1. THIS SURVEY AND PLAN ARE CORRECT AND IN ACCORDANCE WITH THE SURVEYS ACT, THE SURVEYORS ACT AND THE LAND TITLES ACT AND THE REGULATIONS MADE UNDER THEM.
2. THE SURVEY WAS COMPLETED ON THE 31st DAY OF JULY, 2017.

Aug 10/17
DATE
BRIAN J. WEBSTER
ONTARIO LAND SURVEYOR

Stantec Geomatics Ltd.
CANADA LAND SURVEYORS
ONTARIO LAND SURVEYORS
1331 CLIVE AVENUE, SUITE 400
OTTAWA, ONTARIO, K2C 3G4
TEL: 613.722.4400 FAX: 613.722.2799
STANTEC.COM

DRAWN: JP CHECKED: BW PM: BW FIELD: ES PROJECT No.: 161613001-714