

PROJECT TEAM

ARCHITECT
HOBIN ARCHITECTURE
PATRICK BISSON
T 613-238-7200

PLANNING
FOTENN CONSULTANTS INC.
STEPHANIE MORRIS
T 613-730-3709

CIVIL
J.L. RICHARDS
LUCIE DALRYMPLE
T 613-913-4368

LANDSCAPE ARCHITECT
LASHLEY & ASSOCIATES LANDSCAPE ARCHITECTS
DANIELA CORREIA
T 613-233-4051

TRANSPORTATION
PARSONS
MARK BAKER
T 613-222-8234

ENVIRONMENTAL
GRADIENT WIND ENGINEERING
JOSHUA FOSTER
T 613-836-0634

SURVEYOR
STANTEC
BRIAN WEBSTER
T 613-229-7644

WIND FRIENDLY GLASS: AS PER CITY OF WIND SAFETY GUIDELINES OUTLINE 2, TYPED WITH A MINIMUM 1.4
1. GLASS PROVIDED FOR ALL BALCONY RAILINGS ON LEVEL 14
2. GLASS PROVIDED FOR ALL BALCONY RAILINGS ON LEVEL 14
3. GLASS PROVIDED FOR ALL BALCONY RAILINGS ON ROOF TERRACE LEVELS

3	230728	Issued for Rezoning
2	230310	Issued for Rezoning
1	210820	Issued for Rezoning

no.	date	revision
-----	------	----------

It is the responsibility of the appropriate contractor to check and verify all dimensions on site and report all errors and/or omissions to the architect.

All contractors must comply with all pertinent codes and by-laws.

Do not scale drawings.

This drawing may not be used for construction until signed.

Copyright reserved.

LEGEND:

NEW BUILD	
AF	ALUMINUM FLASHING
AP-1	ALUMINUM PANEL 1
AP-2	ALUMINUM PANEL 2
AP-3	ALUMINUM PANEL 3
BV-1	BRICK VENEER
MS-1	MASONRY 1
PC	PRECAST CONCRETE
GR	GLASS RAILING
SP	SPANDREL PANEL
VG	VISION GLASS

Hobin Architecture Incorporated
63 Pamela Street
Ottawa, Ontario
Canada K1S 5K6
T: 613-238-7200
F: 613-235-2005
E: mail@hobinarc.com



PROJECT/LOCATION:
359 KENT STREET

DRAWING TITLE:
ELEVATIONS

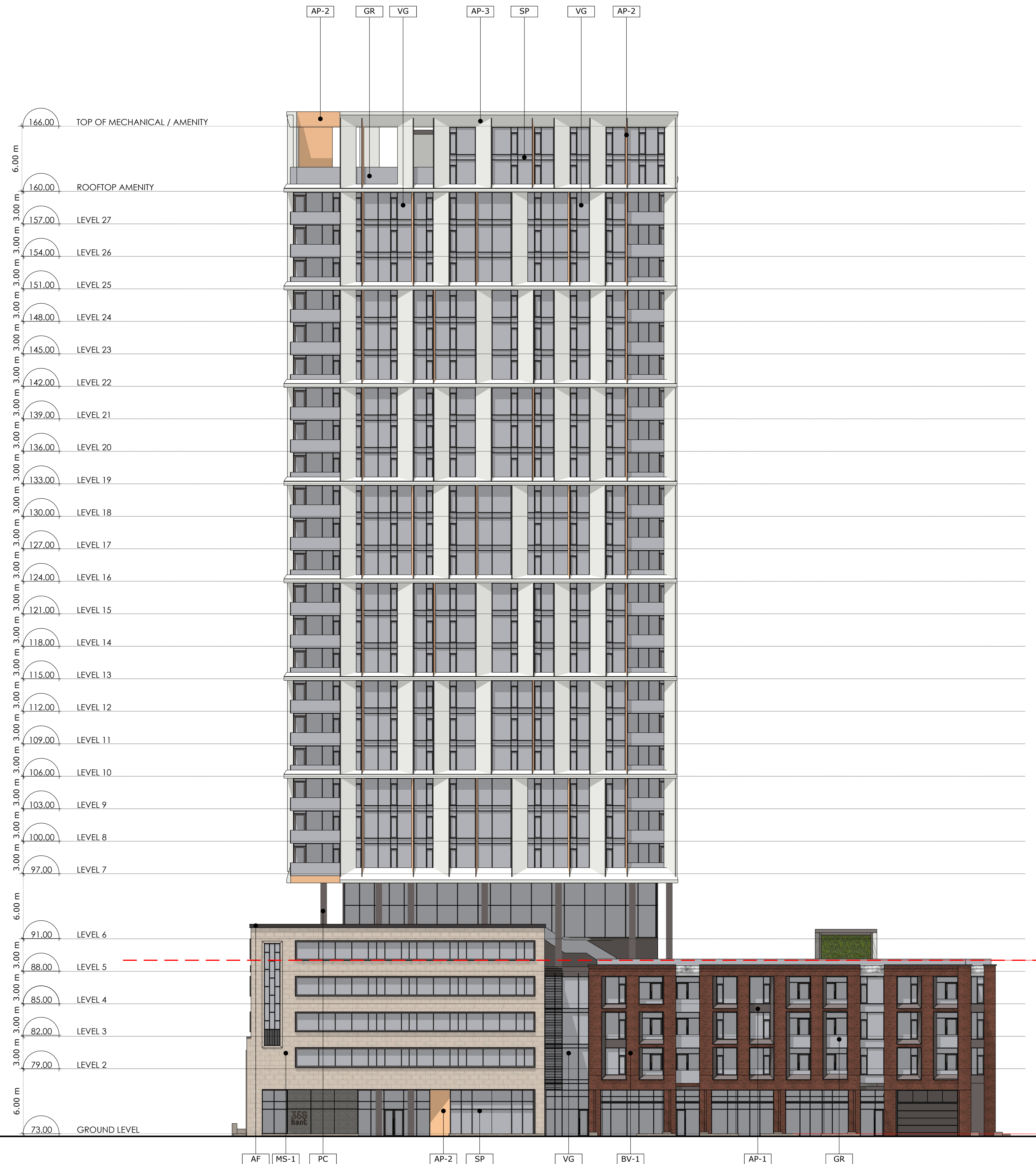
DRAWN BY: DATE: 230728 **SCALE:** 1:250

PROJECT: 2027

DRAWING NO.: A300

REVISION NO.:

ONTRARIO ASSOCIATION OF ARCHITECTS
PATRICK BISSON
LICENCE 3049



1 SOUTH ELEVATION
A3.01 Scale: 1: 200

PROJECT TEAM

ARCHITECT
HOBIN ARCHITECTURE
PATRICK BISSON
T 613-238-7200

PLANNING
FOTENN CONSULTANTS INC.
STEPHANIE MORRIS
T 613-730-3709

CIVIL
J.L. RICHARDS
LUCIE DALRYMPLE
T 613-913-4368

LANDSCAPE ARCHITECT
LASHLEY & ASSOCIATES LANDSCAPE ARCHITECTS
DANIELA CORREIA
T 613-233-4051

TRANSPORTATION
PARSONS
MARK BAKER
T 613-222-8234

ENVIRONMENTAL
GRADIENT WIND ENGINEERING
JOSHUA FOSTER
T 613-836-0634

SURVEYOR
STANTEC
BRIAN WEBSTER
T 613-229-7444

WIND FRIENDLY GLASS: AS PER CITY OF BRNO SAFETY GUIDELINES OUTLINE 2, TYPICAL 3.0 m x 3.0 m
1. GLASS PROVIDED FOR ALL BALCONY RAILINGS ON LEVEL 14
2. GLASS PROVIDED FOR ALL BALCONY RAILINGS ON LEVEL 15
3. GLASS PROVIDED FOR ALL BALCONY RAILINGS ON ROOF TERRACE LEVELS

3	230728	Issued for Rezoning
2	230310	Issued for Rezoning
1	210820	Issued for Rezoning

no.	date	revision
-----	------	----------

It is the responsibility of the appropriate contractor to check and verify all dimensions on site and report all errors and/or omissions to the architect.

All contractors must comply with all pertinent codes and by-laws.

Do not scale drawings.

This drawing may not be used for construction until signed.

Copyright reserved.

LEGEND:

NEW BUILD	
AP	ALUMINUM FLASHING
AP-1	ALUMINUM PANEL 1
AP-2	ALUMINUM PANEL 2
AP-3	ALUMINUM PANEL 3
BV-1	BRICK VENEER
MS-1	MASONRY 1
PC	PRECAST COLUMN
GR	GLASS RAILING
SP	SPANDREL PANEL
VG	VISION GLASS

Hobin Architecture Incorporated
63 Pamela Street
Ottawa, Ontario
Canada K1S 5K6
T: 613-238-7200
F: 613-235-2005
E: mail@hobinarc.com
hobinarc.com



PROJECT/LOCATION:

359 KENT STREET

DRAWING TITLE:

ELEVATIONS

DRAWN BY: DATE: 230728

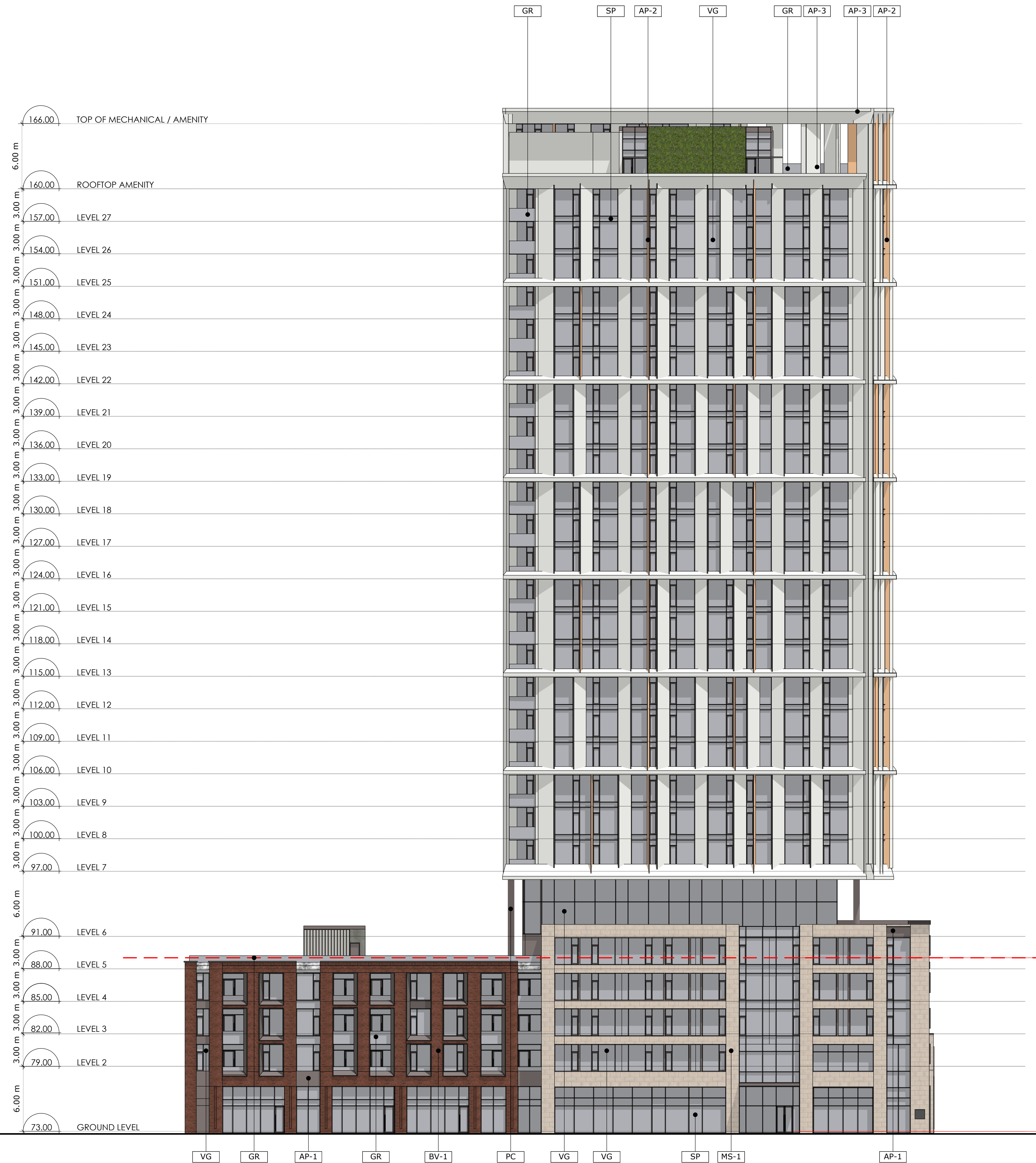
SCALE: 1:250

PROJECT: 2027

DRAWING NO.:

A301

REVISION NO.:



2 NORTH ELEVATION

A3.01 Scale: 1: 200

PROJECT TEAM

ARCHITECT
HOBIN ARCHITECTURE
PATRICK BISSON
T 613-238-7200

PLANNING
FOTENN CONSULTANTS INC.
STEPHANIE MORRIS
T 613-730-3709

CIVIL
J.L. RICHARDS
LUCIE DALRYMPLE
T 613-913-4368

LANDSCAPE ARCHITECT
LASHLEY & ASSOCIATES LANDSCAPE ARCHITECTS
DANIELA CORREIA
T 613-233-4051

TRANSPORTATION
PARSONS
MARK BAKER
T 613-222-8234

ENVIRONMENTAL
GRADIENT WIND ENGINEERING
JOSHUA FOSTER
T 613-836-0634

SURVEYOR
STANTEC
BRIAN WEBSTER
T 613-229-7644

WIND FRIENDLY GLASS AS PER CITY OF BRNO SAFETY GUIDELINES OUTLINE 2, TYPICAL 3.0.4.1.1
1. GLASS PROVIDED FOR ALL BALCONY RAILINGS ON LEVEL 4
2. GLASS PROVIDED FOR ALL BALCONY RAILINGS ON LEVEL 5
3. GLASS PROVIDED FOR ALL BALCONY RAILINGS ON ROOF TERRACE LEVELS

no.	date	revision
3	230728	Issued for Rezoning
2	230310	Issued for Rezoning
1	210820	Issued for Rezoning

It is the responsibility of the appropriate contractor to check and verify all dimensions on site and report all errors and/or omissions to the architect.

All contractors must comply with all pertinent codes and by-laws.

Do not scale drawings.

This drawing may not be used for construction until signed.

Copyright reserved.

LEGEND:

NEW BUILD:	
AF	ALUMINUM FLASHING
AP-1	ALUMINUM PANEL 1
AP-2	ALUMINUM PANEL 2
AP-3	ALUMINUM PANEL 3
BV-1	BRICK VENEER
MS-1	MASONRY 1
PC	PRECAST COLUMN
GR	GLASS RAILING
SP	SPANDREL PANEL
VG	VISION GLASS

Hobin Architecture Incorporated
63 Pamela Street
Ottawa, Ontario
Canada K1S 5K6
T: 613-238-7200
F: 613-235-2005
E: mail@hobinarc.com
hobinarc.com



HOBIN
ARCHITECTURE

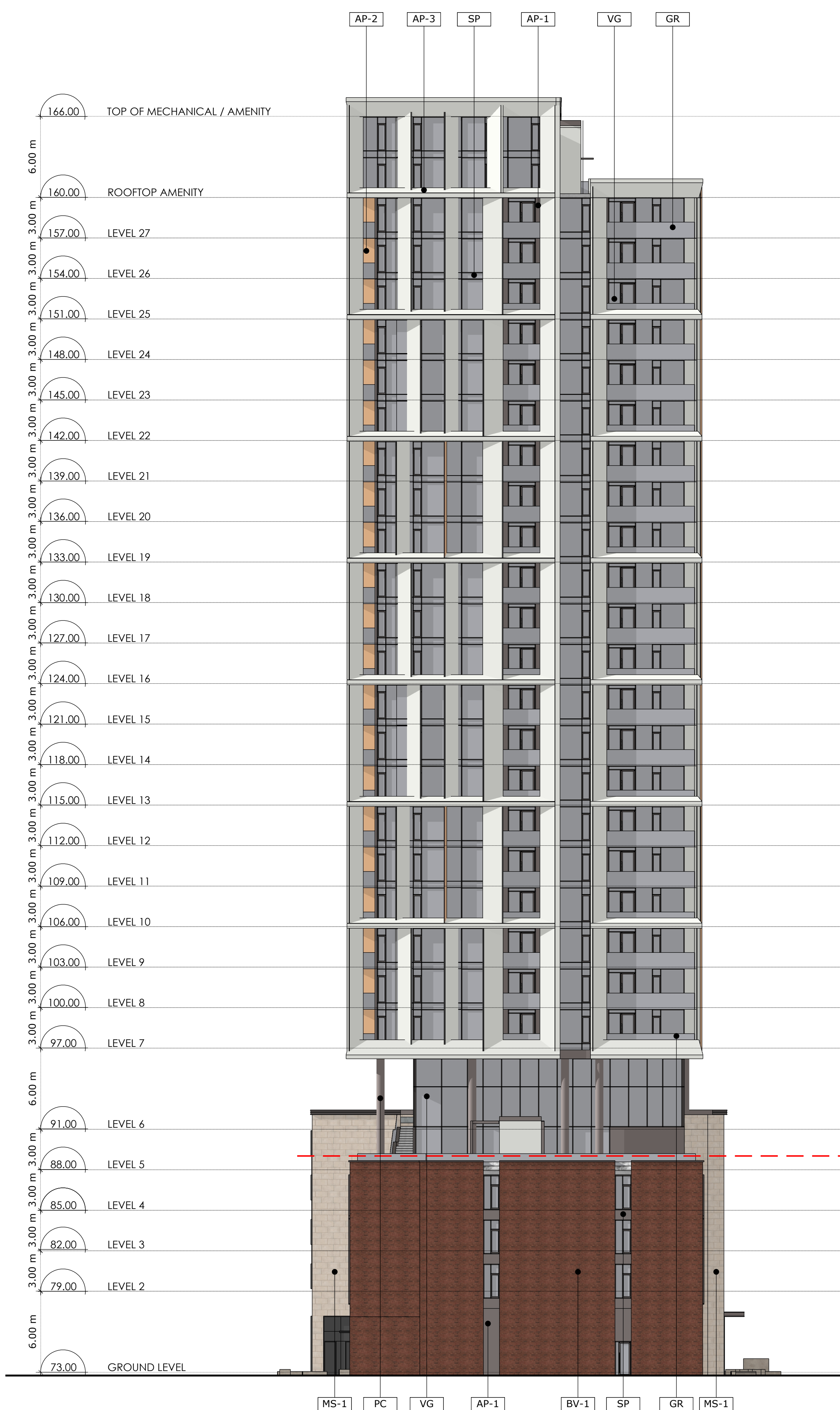
PROJECT/LOCATION:
359 KENT STREET

DRAWING TITLE:
ELEVATIONS

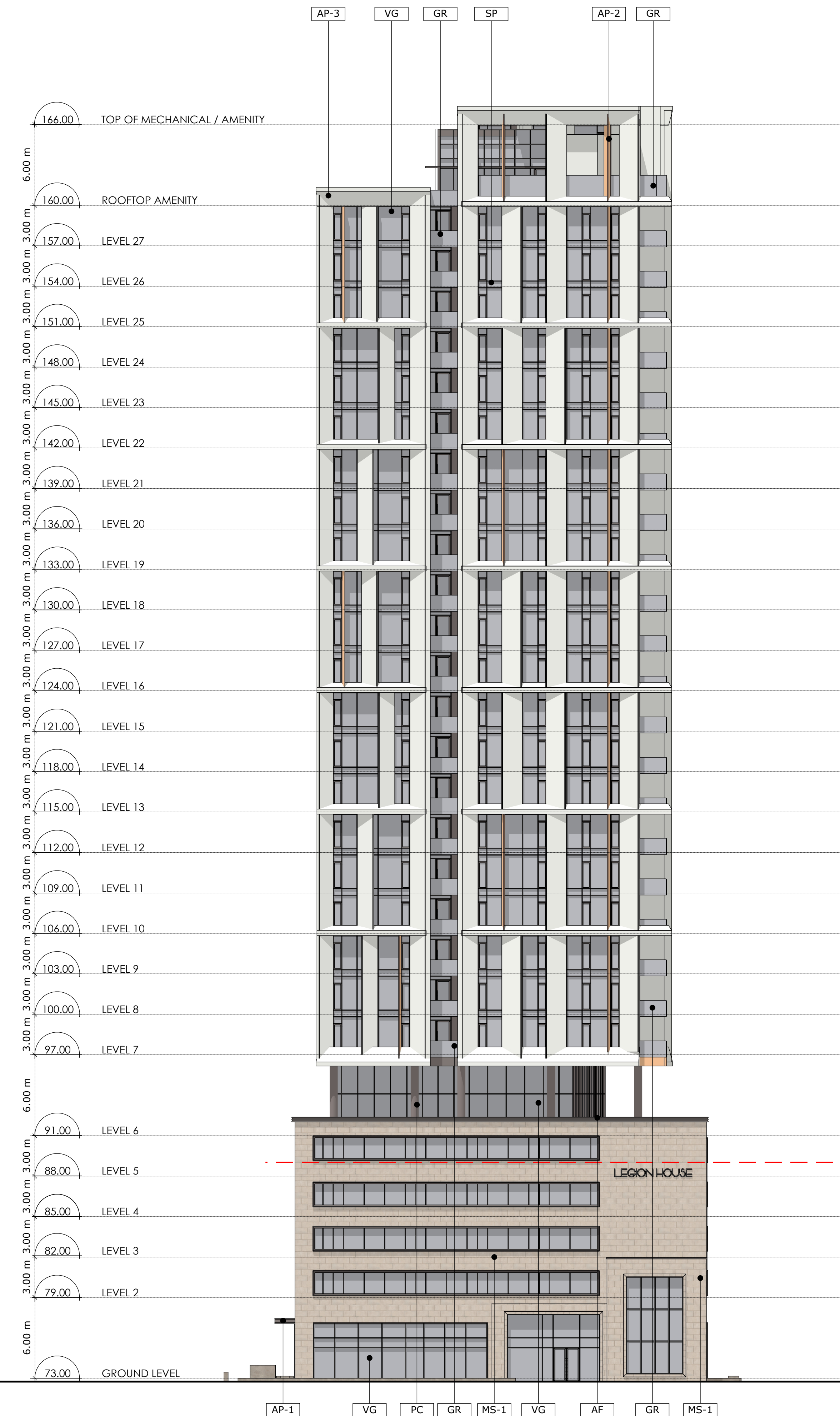
DRAWN BY: DATE: 230728 **SCALE:** 1:250

PROJECT: 2027 **DRAWING NO.:** A302

REVISION NO.:



1 EAST ELEVATION
A3.00 Scale: 1: 200



2 WEST ELEVATION
A3.00 Scale: 1: 200