

Distances shown on this plan are ground distances and can be converted to grid distances by multiplying by the combined scale factor of 0.999905.

Bearings are grid, derived from Can-Net 2016 Real Time Network GPS observations on reference points A and B, and are referenced to Specified Control Points 01919680037 and 01919791051, MTM Zone 9 (76°30' West Longitude) NAD-83 (original).

For bearing comparisons, a rotation of 0°23'40" counter-clockwise was applied to bearings on plan P1
0°24'10" counter-clockwise was applied to bearings on plan P2

Coordinates are derived from Can-Net 2016 Real Time Network GPS observations referenced to Specified Control Points 01919680037 and 01919791051, MTM Zone 9 (76°30' West Longitude) NAD-83 (original).

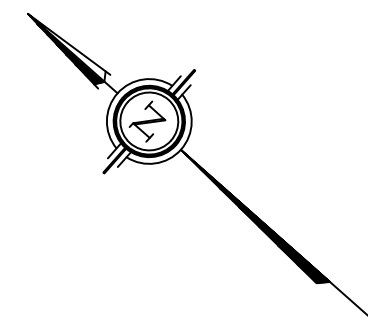
Coordinate values are to urban accuracy in accordance with O. Reg. 216/10.

• 01919680037 Northing 5023507.89 Easting 351533.87
• 01919791051 Northing 5023569.51 Easting 343833.72
• Point A Northing 5029382.58 Easting 344158.83
• Point B Northing 5028923.22 Easting 344562.18

Caution: Coordinates cannot, in themselves, be used to re-establish corners or boundaries shown on this plan.

Notes & Legend

- Denotes Survey Monument Planted
- Denotes Survey Monument Found
- SIB Standard Iron Bar
- SSIB Short Standard Iron Bar
- IB Iron Bar
- RB Rock Bar
- (WIT) Witness
- (AOG) Annis, O'Sullivan, Vollebakk Ltd.
- Meas. Measured
- (P1) Plan 5R-7770
- (P2) Plan 4R-22140
- (D1) Inst. MH2209
- (D2) Inst. MH2380
- OHW Overhead Wires
- UP Utility Pole
- P&WF Post & Wire Fence



Committee of Adjustment
Received | Reçu le
2023-07-05

City of Ottawa | Ville d'Ottawa
Comité de dérogation

SCHEDULE				
AREA (Hectares)	PART	LOT	CONCESSION	PIN
4.2298	1			
0.0510	2	PART OF 22	4 (MARCH)	PART OF 04530-0493
0.3035	3			

PLAN OF SURVEY OF
PART OF LOT 22
CONCESSION 4
Geographic Township of March
CITY OF OTTAWA
Surveyed by Annis, O'Sullivan, Vollebakk Ltd.



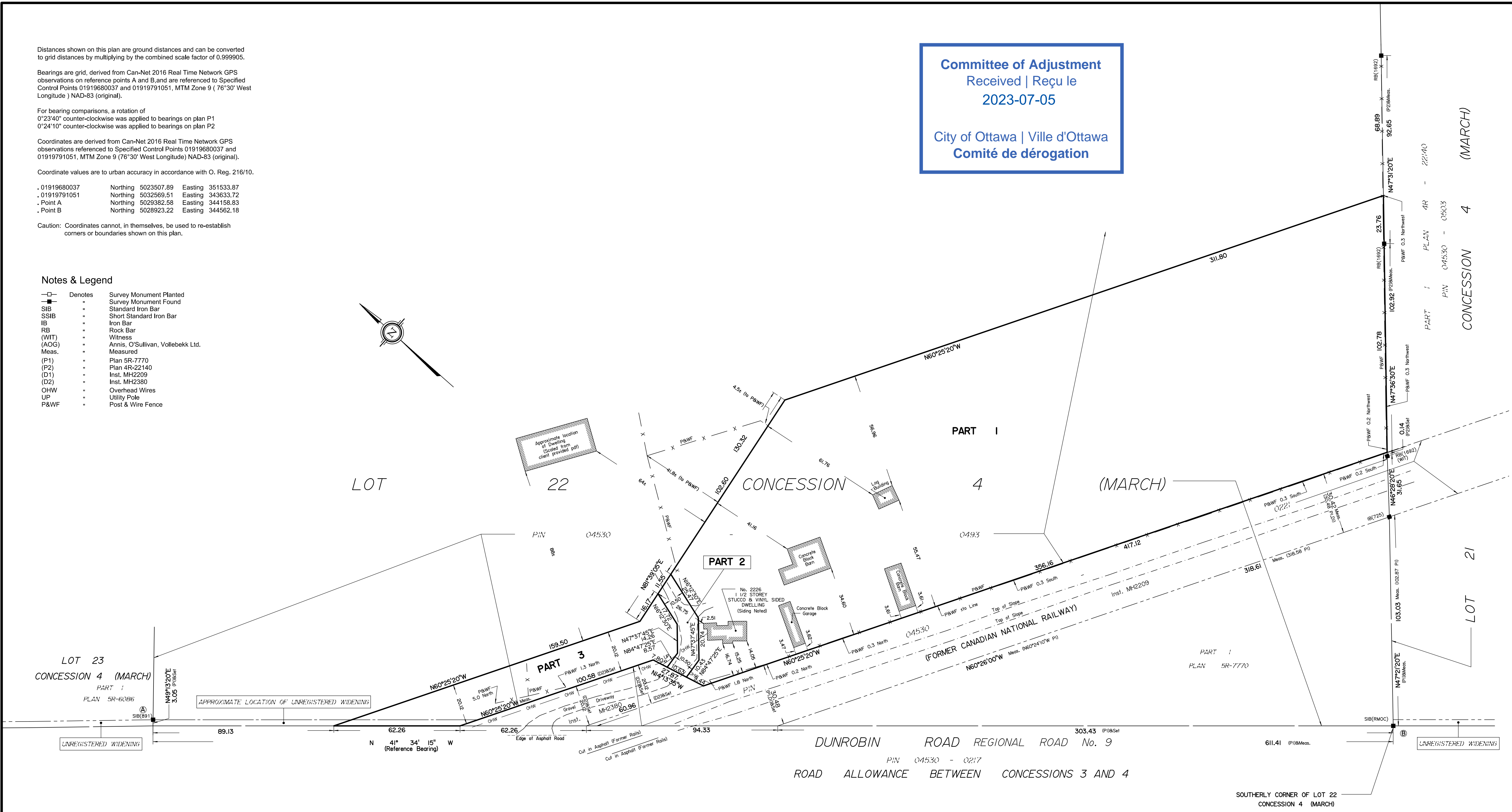
The intended plot size of the plan is 914 mm in width by 457 mm in height when plotted at a scale of 1:1000.

Metric
DISTANCES AND COORDINATES SHOWN ON THIS PLAN ARE IN METRES AND CAN BE CONVERTED TO FEET BY DIVIDING BY 0.3048.

Surveyor's Certificate
I CERTIFY THAT :
1. This survey and plan are correct and in accordance with the Surveys Act, the Surveyors Act and the Land Titles Act and the regulations made under them.
2. The survey was completed on the ___ day of _____, 2023.

Date _____ E. H. Henweyer
Ontario Land Surveyor

This plan of survey relates to AOLS Plan Submission Form Number V-



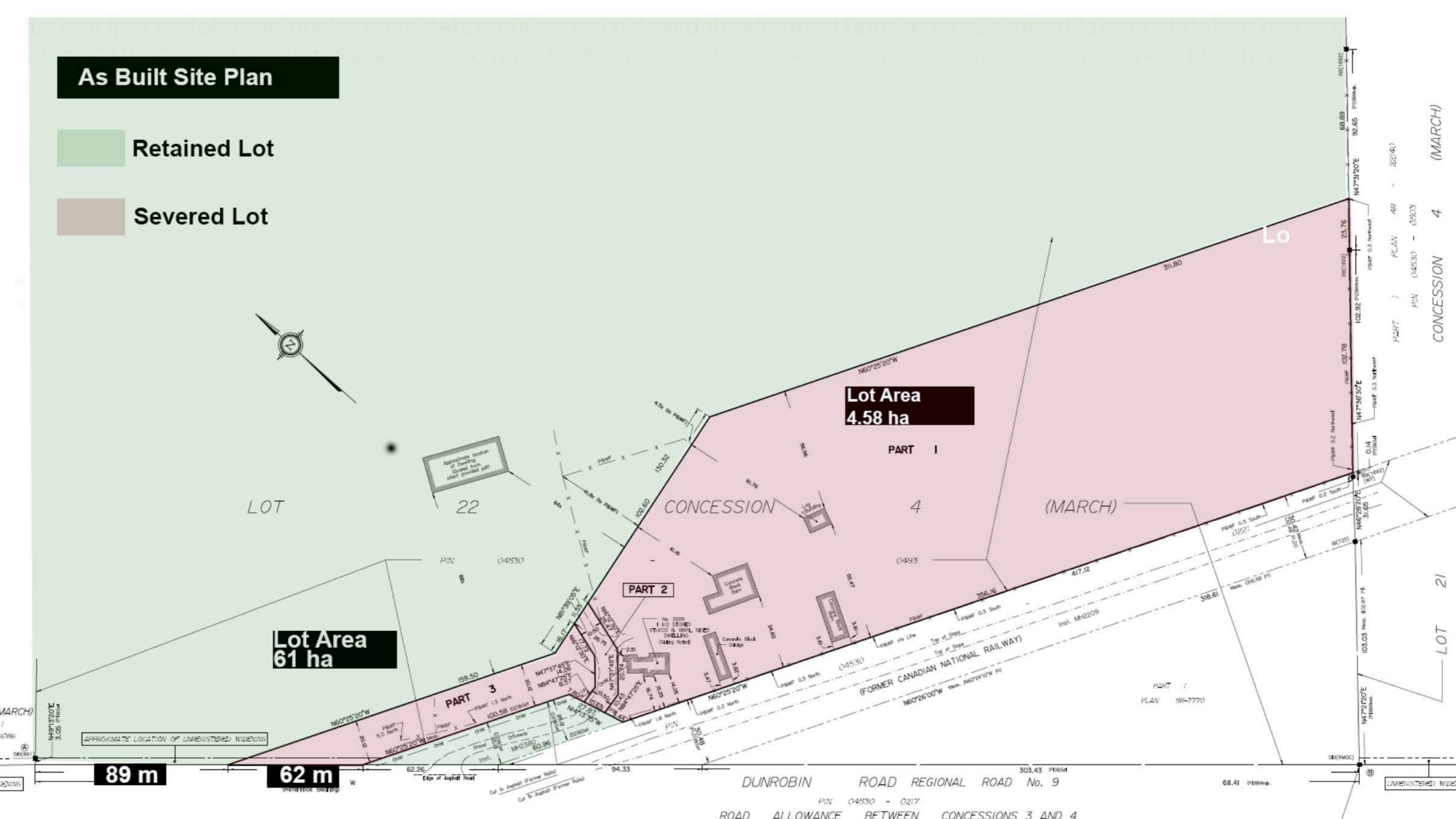
As Built Site Plan

- Retained Lot
- Severed Lot



**Lot Area
4.58 ha**

**Lot Area
61 ha**



PART 1 PLAN 4R - 22/40
PIN 04530 - 0503
CONCESSION 4 (MARCH)

LOT 21

89 m

62 m

DUNROBIN ROAD REGIONAL ROAD No. 9

ROAD ALLOWANCE BETWEEN CONCESSIONS 3 AND 4

Distances shown on this plan are ground distances and can be converted to grid distances by multiplying by the combined scale factor of 0.999905.

Bearings are grid, derived from Can-Net 2016 Real Time Network GPS observations on reference points A and B and are referenced to Specified Control Points 0191960037 and 01919791051, MTM Zone 9 (78°30' West Longitude) NAD83 (original).

For bearing comparisons, a rotation of 0°23'47" counter-clockwise was applied to bearings on plan P1 0°24'00" counter-clockwise was applied to bearings on plan P2

Coordinates are derived from Can-Net 2016 Real Time Network GPS observations referenced to Specified Control Points 0191960037 and 01919791051, MTM Zone 9 (78°30' West Longitude) NAD83 (original).

Coordinate values are to urban accuracy in accordance with O. Reg. 216/10,

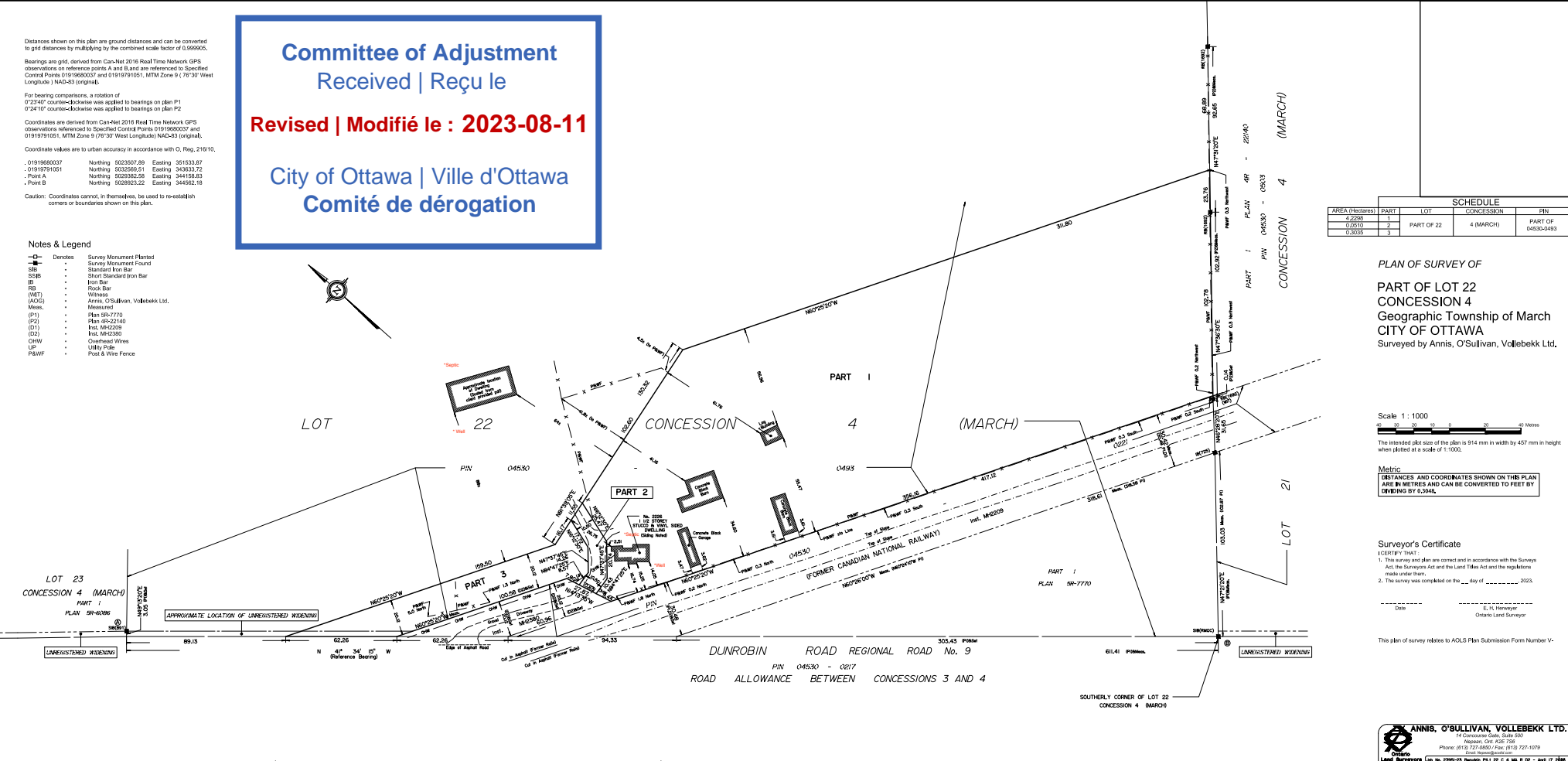
- 0191960037 Northing 5022507.69 Easting 351533.87
 - 01919791051 Northing 5022586.51 Easting 343633.72
 - Point A Northing 5029382.58 Easting 344148.83
 - Point B Northing 5029653.22 Easting 344562.18

Caution: Coordinates cannot, in themselves, be used to re-establish corners or boundaries shown on this plan.

**Committee of Adjustment
 Received | Reçu le**
Revised | Modifié le : 2023-08-11
**City of Ottawa | Ville d'Ottawa
 Comité de dérogation**

Notes & Legend

- Dendrite Survey Monument Planted
- Survey Monument Found
- S— Standard Iron Bar
- S8B— Short Standard Iron Bar
- B— Iron Bar
- R3— Rock Bar
- W— Witness
- (ADG)— Annis, O'Sullivan, Vollebek Ltd., Measured
- (P1)— Plan SR-7770
- (P2)— Plan SR-22140
- (D1)— Int. M-2239
- (D2)— Int. M-2200
- C— Overhead Wires
- UP— Utility Pole
- P&W— Post & Wire Fence



SCHEDULE				
AREA (hectares)	PART	LOT	CONCESSION	PIN
2.228	1			
0.6510	2	PART OF 22	4 (MARCH)	
0.2005	3			

**PLAN OF SURVEY OF
 PART OF LOT 22
 CONCESSION 4
 Geographic Township of March
 CITY OF OTTAWA**
 Surveyed by Annis, O'Sullivan, Vollebek Ltd.

Scale 1 : 1000

The intended plot size of the plan is 914 mm in width by 457 mm in height when plotted at a scale of 1:1000.

Metric
 DISTANCES AND COORDINATES SHOWN ON THIS PLAN ARE IN METRES AND CAN BE CONVERTED TO FEET BY DIVIDING BY 0.3048.

Surveyor's Certificate
 (CERTIFICATE)
 1. This survey and plan are correct and in accordance with the Survey Act, the Surveyors Act and the Land Titles Act and the regulations made under them.
 2. The survey was completed on the ____ day of _____ 2023.
 Date _____ E. H. Horvath
 Chartered Land Surveyor

This plan of survey relates to AOLS Plan Submission Form Number V-

ANNIS, O'SULLIVAN, VOLLEBEK LTD.
 14 Grosvenor Park, Suite 500
 Ottawa, Ont. K1L 2J8
 Phone: (613) 727-8852 / Fax: (613) 727-1079
 Email: annis@annis.com
 Land Surveyors (Reg. No. 22921-03) Meas. Lic. 22, C. 4, M. 8, 02 - Aug. 12, 2016