

TOPOGRAPHIC PLAN OF SURVEY OF

LOT 93
REGISTERED PLAN 4M-20
CITY OF OTTAWA

Surveyed by Annis, O'Sullivan, Vollebek Ltd.

Scale 1:150



Metric

DISTANCES AND COORDINATES SHOWN ON THIS PLAN ARE IN METRES AND CAN BE CONVERTED TO FEET BY DIVIDING BY 0.3048.

Surveyor's Certificate

I CERTIFY THAT:

- This survey and plan are correct and in accordance with the Surveys Act and the Surveyors Act and the regulations made under them.
- The survey was completed on the 17th day of October, 2022.

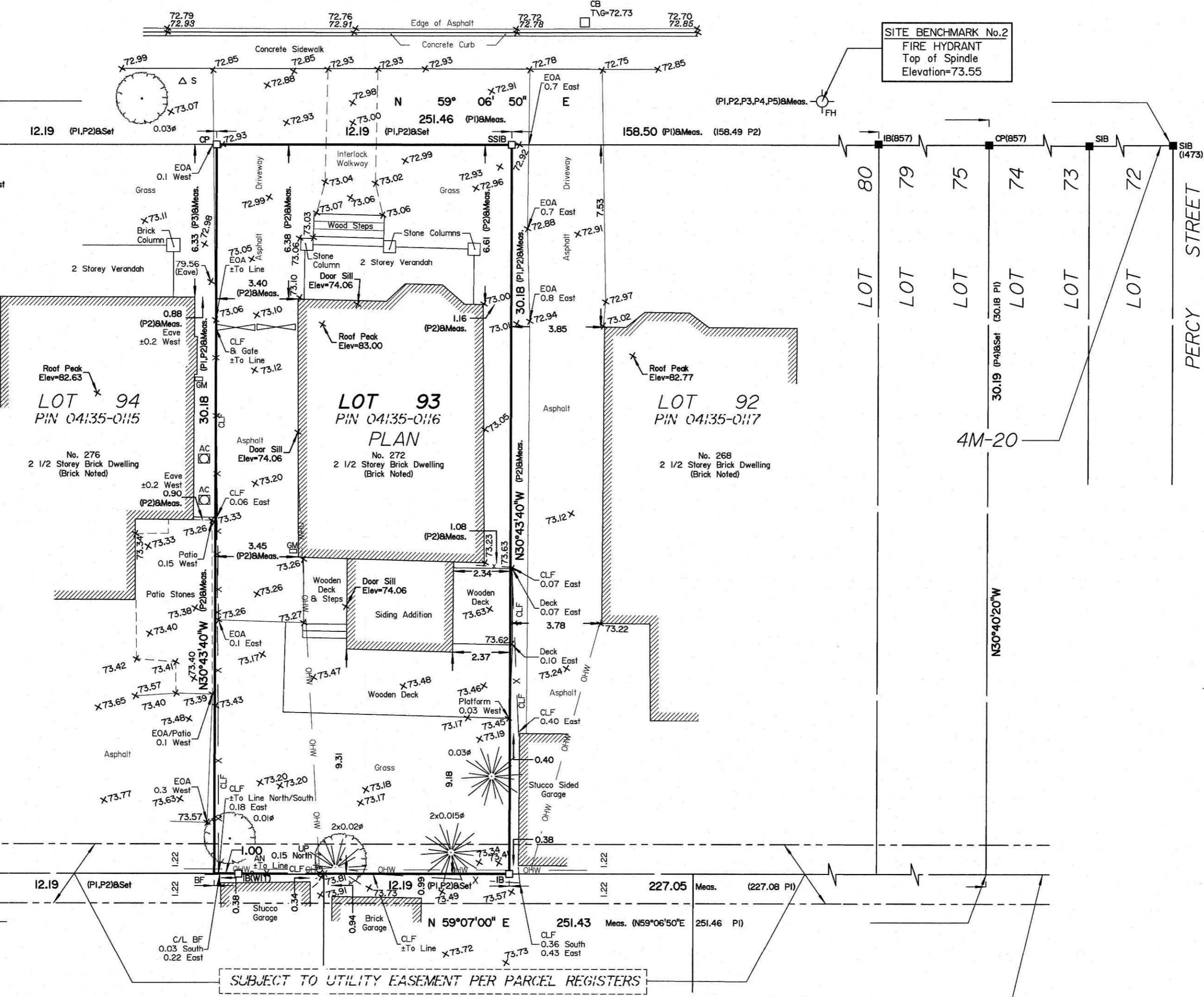
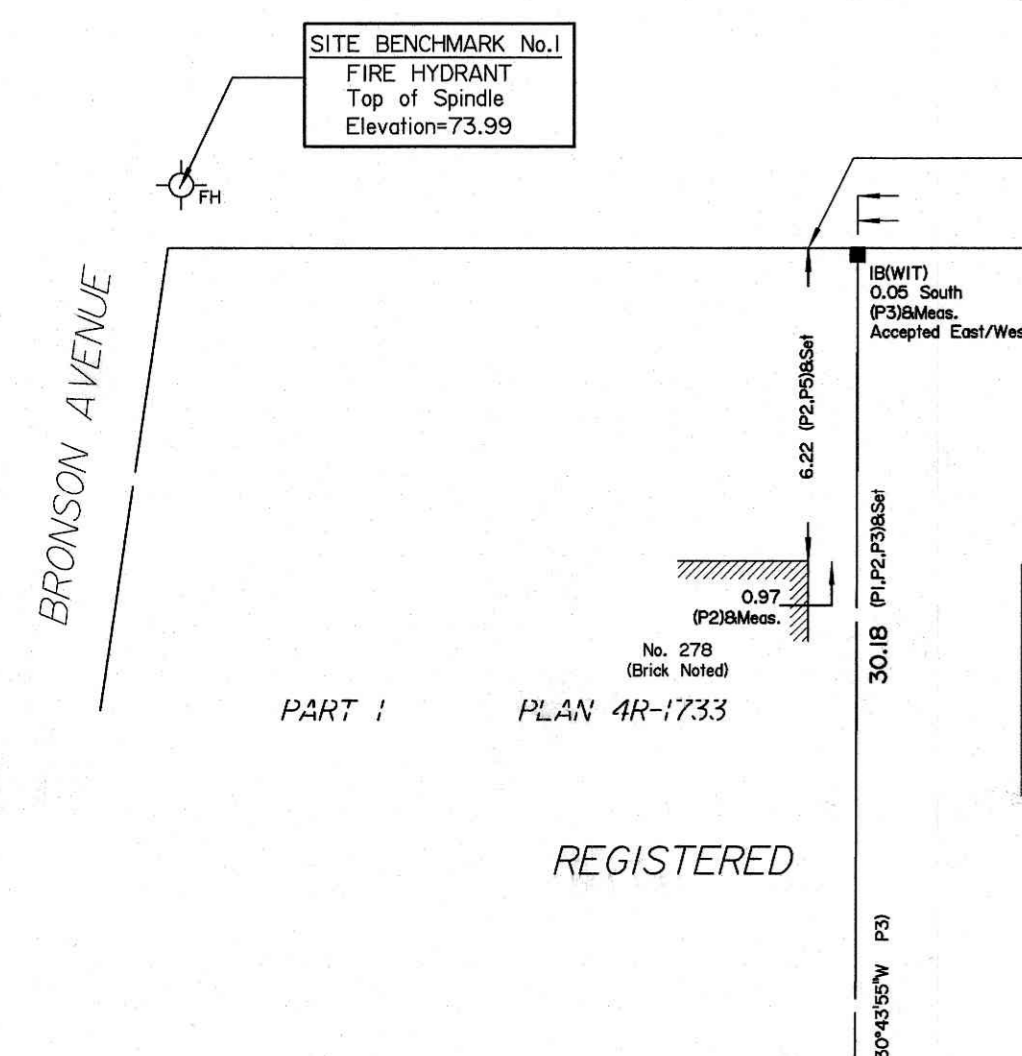
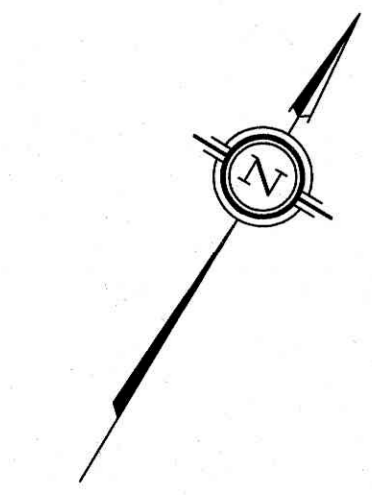
Date: Oct 21/22
T. Hartwick
Ontario Land Surveyor

Notes & Legend

Denotes	
□	Survey Monument Planted
■	Survey Monument Found
SIB	Standard Iron Bar
SSIB	Short Standard Iron Bar
IB	Iron Bar
CC	Cut Cross
CP	Concrete Pin
IBØ	Round Iron Bar
(WIT)	Witness
Meas.	Measured
(AOG)	Annis, O'Sullivan, Vollebek Ltd.
(P1)	Registered Plan 4M-20
(P2)	(1352) Plan dated May 31, 1999
(P3)	(STANTEC) Plan dated March 6, 2007
(P4)	(857) Plan dated August 15, 2006
(P5)	Plan 4R-1733
○ MH-ST	Maintenance Hole (Storm Sewer)
○ MH-S	Maintenance Hole (Sanitary)
○ UP	Utility Pole
□ CB	Catch Basin
⊕ WV	Water Valve
○ FH	Fire Hydrant
△ S	Sign
□ AC	Air Conditioner
+	Gate
+ 65.00	Location of Elevations
+ 65.00	Top of Concrete Curb Elevation
CLF	Chain Link Fence
BF	Board Fence
— OHW	Overhead Wires
EOA	Edge of Asphalt
Ø	Diameter
C/L	Centreline
—	Property Line
T/G	Top of Grate
○	Deciduous Tree
★	Coniferous Tree
• AN	Anchor
GM	Gas Meter

ASSOCIATION OF ONTARIO
LAND SURVEYORS
PLAN SUBMISSION FORM
V-36304

THIS PLAN IS NOT VALID UNLESS IT IS AN EMBOSSED ORIGINAL COPY ISSUED BY THE SURVEYOR In accordance with Regulation 1026, Section 29 (3).



Bearings are grid, derived from Can-Net 2016 Real Time Network GPS observations referenced to Specified Control Points 01919680005 and 01919680105, MTM Zone 9 (76°30' West Longitude) NAD-83 (original).

For bearing comparisons, a rotation of 0°34'13" counter-clockwise was applied to bearings on P1, P2, P4 & P5.
For bearing comparisons, a rotation of 0°28'55" counter-clockwise was applied to bearings on P3.

ELEVATION NOTES

- Elevations shown are geodetic and are referred to the CGVD28 geodetic datum.
- It is the responsibility of the user of this information to verify that the job benchmark has not been altered or disturbed and that its relative elevation and description agrees with the information shown on this drawing.

UTILITY NOTES

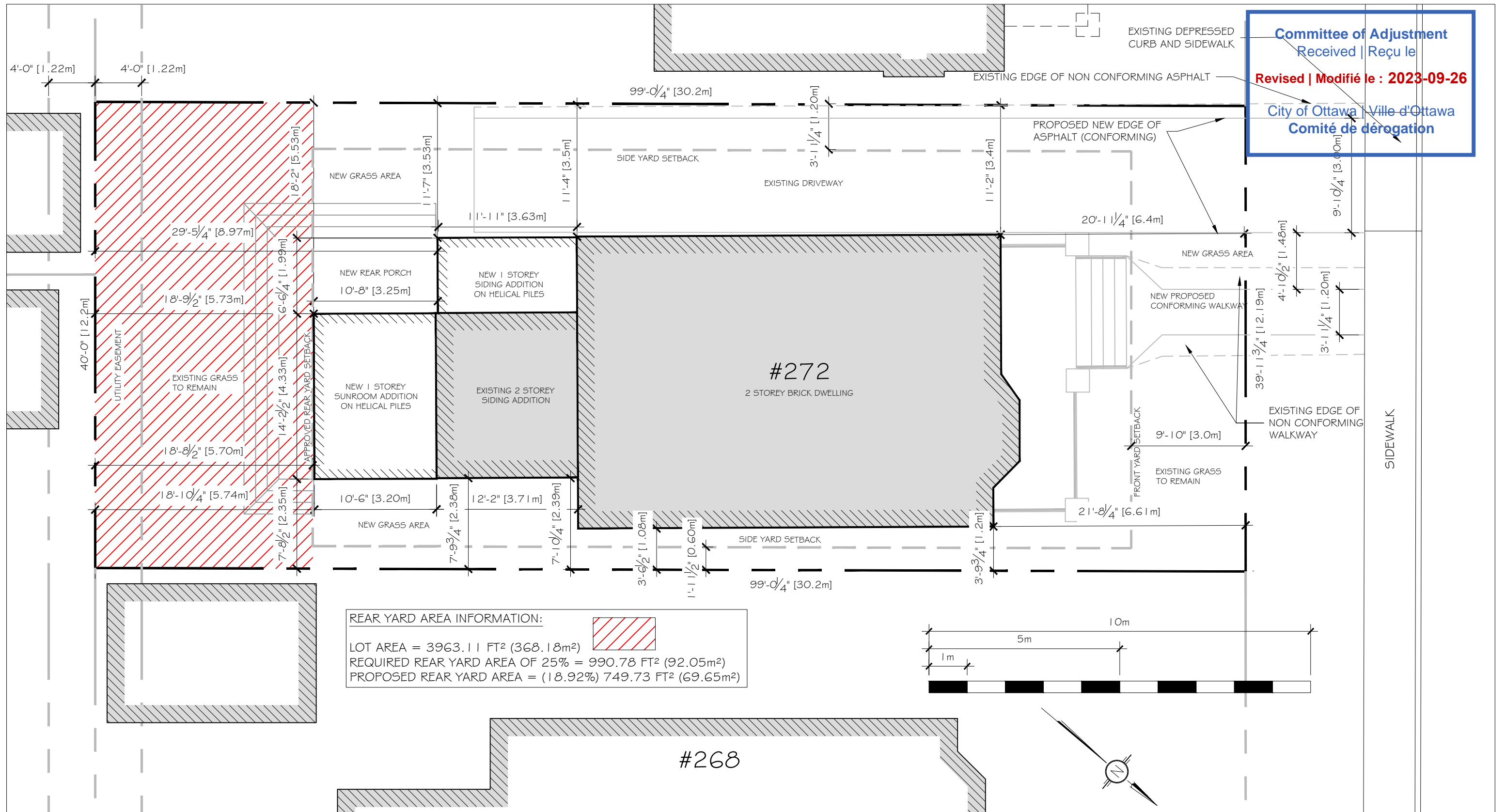
- This drawing cannot be accepted as acknowledging all of the utilities and it will be the responsibility of the user to contact the respective utility authorities for confirmation.
- Only visible surface utilities were located.
- A field location of underground plant by the pertinent utility authority is mandatory before any work involving breaking ground, probing, excavating etc.

SUBJECT TO UTILITY EASEMENT PER PARCEL REGISTERS

© Annis, O'Sullivan, Vollebek Ltd., 2022. "THIS PLAN IS PROTECTED BY COPYRIGHT"

ANNIS, O'SULLIVAN, VOLLEBEK LTD.
14 Concourse Gate, Suite 500
Nepean, Ont. K2E 7S6
Phone: (613) 727-0850 / Fax: (613) 727-1079
Email: Nepean@aoivld.com

Ontario Land Surveyors Job No. 23245-22 SRSHld L193 RP4M-20 POS F



Committee of Adjustment
Received | Reçu le
Revised | Modifié le : 2023-09-26
City of Ottawa | Ville d'Ottawa
Comité de dérogation

PROPOSED SITE PLAN

SCALE 1/8" = 1'-0"