

**METRIC**  
DISTANCES, COORDINATES AND ELEVATIONS SHOWN ON THIS PLAN ARE IN METRES AND CAN BE CONVERTED TO FEET BY DIVIDING BY 0.3048

**LEGEND**

- - SURVEY MONUMENT FOUND
- - SURVEY MONUMENT SET
- SIB - STANDARD IRON BAR
- IB - IRON BAR
- - ROUND
- (P) - REGISTERED PLAN 369009
- (P2) - PLAN 4R-2016
- (P3) - PLAN 5R-14125
- (P4) - PLAN BY (857) DATED OCTOBER 27, 1983, (REF. 9-369009)
- (P5) - PLAN BY (1442) DATED FEBRUARY 24, 1988, (REF. OTT.-305)
- (P6) - PLAN BY (1175) DATED SEPTEMBER 20, 1988, (REF. OTT.-305)
- (P7) - PLAN BY (857) DATED APRIL 10, 1996, (REF. 19-369009)
- (FM) - NOTES BY FARLEY, MARTIN & ASSOCIATES LTD., DATED OCTOBER 5, 1976 (REF. 369009)
- (857) - FAIRHALL, MOFFATT & WOODLAND LIMITED, O.L.S.
- (WJW) - W. J. WEBSTER, O.L.S. (647)
- (H.R.F.) - H. R. FARLEY, O.L.S. (1175)
- (H.A.K.S.) - H. A. K. SHIPMAN, O.L.S. (1442)
- (J.H.K.) - J. H. KENNEDY, O.L.S. (SU)
- (M) - MEASURED
- (S) - SET
- (DIA.) - DIAMETER
- (WIT) - WITNESS
- (PIN) - PROPERTY IDENTIFIER NUMBER
- (CLF) - CHAIN LINK FENCE
- (T/W) - TOP OF RETAINING WALL
- (T/FDN) - TOP OF FOUNDATION
- (C/L) - CENTERLINE
- (GUY) - GUY WIRE AND ANCHOR
- (SIGN) - SIGN
- (D) - DECIDUOUS TREE
- FH - FIRE HYDRANT
- CB - CATCH BASIN
- MH - MANHOLE
- LS - LAMP STANDARD
- ⊙ UP - UTILITY POLE
- WV - WATER VALVE
- W - WATERMAIN
- ST - STORM SEWER
- S - SANITARY SEWER
- G - GAS
- E - UNDERGROUND ELECTRICAL
- C - CURB

**SCHEDULE**

AREA (SQ.M.)	PART	PART OF LOT	REG. PLAN	ALL OF PIN
50	1	12	369009	03959-0350
308	2			
9.9	3	12 & 13		
350	4			

PARTS 1 & 3 SUBJECT TO INTERESTS IF ANY AS IN INST.'S CR369486 & CR384866.

COORDINATES WERE DERIVED FROM REAL TIME NETWORK OBSERVATIONS (SMARTNET) MTM ZONE 9, NAD83 ORIGINAL.

COORDINATES HAVE BEEN DETERMINED TO AN URBAN ACCURACY IN ACCORDANCE WITH SECTION 14(2) OF O.REG 216/10.

POINT ID	NORTHING	EASTING
•	•	•
•	•	•
•	•	•
•	•	•
•	•	•

COORDINATES CANNOT IN THEMSELVES BE USED TO RE-ESTABLISH CORNERS OR BOUNDARIES SHOWN ON THIS PLAN.

I REQUIRE THIS PLAN TO BE DEPOSITED UNDER THE LAND TITLES ACT.

DATE \_\_\_\_\_  
\_\_\_\_\_  
JOHN H. GUTRI, O.L.S.

**PLAN 4R-**  
RECEIVED AND DEPOSITED

DATE \_\_\_\_\_  
\_\_\_\_\_  
REPRESENTATIVE FOR LAND REGISTRAR FOR THE LAND TITLES DIVISION OF OTTAWA - CARLETON (N 4)

**PLAN OF SURVEY OF LOT 212 AND PART OF LOT 213 REGISTERED PLAN 369009 CITY OF OTTAWA**

SCALE 1 : 125  
0 1 2 5 10 12 metres  
**FAIRHALL, MOFFATT & WOODLAND LIMITED**  
ONTARIO LAND SURVEYORS

**NOTES**

- BEARINGS ARE ASTRONOMIC AND ARE REFERRED TO THE NORTHERLY LIMIT OF MONCTON ROAD AS SHOWN ON REGISTERED PLAN 369009, HAVING A BEARING OF N 68°34'00" E.
- DISTANCES ARE GROUND AND CAN BE CONVERTED TO GRID BY MULTIPLYING BY THE COMBINED SCALE FACTOR \*\*\*\*\*.

PREPARED FOR COMMITTEE OF ADJUSTMENTS PURPOSES  
2023-09-21

**ELEVATION NOTES**

- ELEVATIONS SHOWN HEREON ARE REFERRED TO GEODETIC DATUM (CGVD28).
- ELEVATIONS FOR MANHOLE COVERS AND CATCH BASINS HAVE TO BE INDEPENDENTLY CONFIRMED BEFORE THEY CAN BE ACCEPTED FOR FINAL DESIGN OR CONSTRUCTION PURPOSES.
- IT IS THE RESPONSIBILITY OF THE USER OF THIS INFORMATION TO VERIFY THAT THE JOB BENCHMARK HAS NOT BEEN ALTERED OR DISTURBED AND THAT ITS RELATIVE ELEVATION AND DESCRIPTION AGREE WITH THE INFORMATION SHOWN ON THIS DRAWING.

**UTILITY NOTES**

- THIS DRAWING CANNOT BE ACCEPTED AS ACKNOWLEDGING ANY UNDERGROUND UTILITIES AND IT WILL BE THE RESPONSIBILITY OF THE USER TO CONTACT THE RESPECTIVE UTILITY AUTHORITIES FOR CONFIRMATION OR LOCATION.
- UNDERGROUND UTILITIES, AS REPORTED ON THIS DRAWING, ARE NOT BASED ON AN ACTUAL 'FIELD LOCATE' BY THE RESPECTIVE UTILITY AGENCIES BUT HAVE BEEN COMPILED FROM DATA OBTAINED FROM THE FOLLOWING SOURCE:  
a) CITY OF OTTAWA PUBLIC UTILITIES REGISTRY
- BEFORE ANY WORK INVOLVING PROBING, EXCAVATING, ETC., A FIELD LOCATION OF UNDERGROUND PLANT BY THE PERTINENT UTILITY AUTHORITY IS MANDATORY.

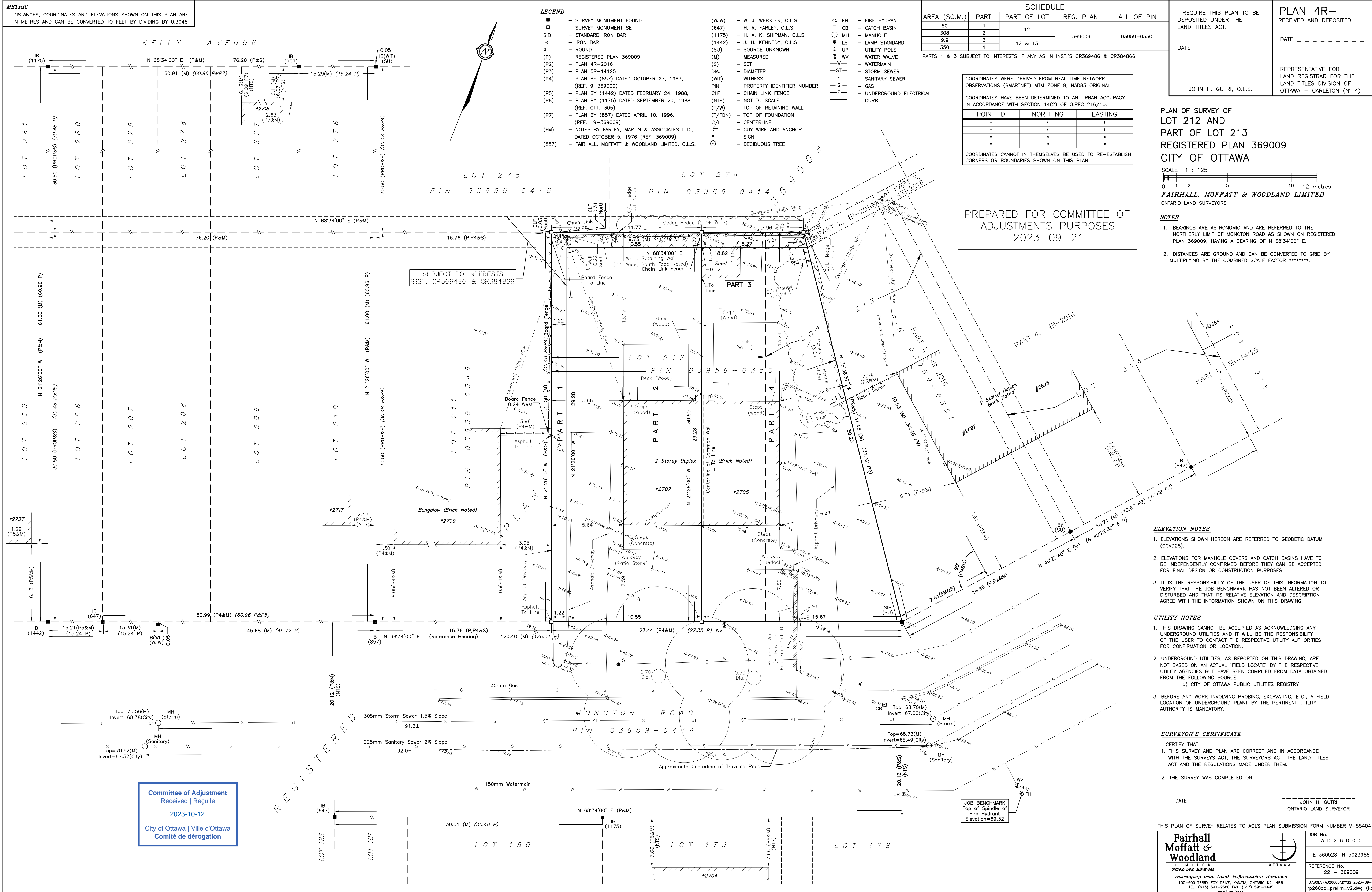
**SURVEYOR'S CERTIFICATE**

- I CERTIFY THAT:
- THIS SURVEY AND PLAN ARE CORRECT AND IN ACCORDANCE WITH THE SURVEYS ACT, THE SURVEYORS ACT, THE LAND TITLES ACT AND THE REGULATIONS MADE UNDER THEM.
  - THE SURVEY WAS COMPLETED ON \_\_\_\_\_

DATE \_\_\_\_\_  
\_\_\_\_\_  
JOHN H. GUTRI  
ONTARIO LAND SURVEYOR

THIS PLAN OF SURVEY RELATES TO AOLS PLAN SUBMISSION FORM NUMBER V-55404

<b>Fairhall Moffatt &amp; Woodland</b> L I M I T E D ONTARIO LAND SURVEYORS Surveying and Land Information Services 100-600 TERRY FOX DRIVE, KANATA, ONTARIO K2L 4B6 TEL: (613) 591-2980 FAX: (613) 591-1498 www.fmw.on.ca	JOB No. A D 2 6 0 0 0
	E 360528, N 5023988
	REFERENCE No. 22 - 369009
	S:\085\4026000\DWG 2023-09-21 rp260od_prelim_v2.dwg (kb)



Committee of Adjustment  
Received | Reçu le  
2023-10-12  
City of Ottawa | Ville d'Ottawa  
Comité de dérogation