



Committee of Adjustment
Received | Reçu le
2023-10-03
City of Ottawa | Ville d'Ottawa
Comité de dérogation

I REQUIRE THIS PLAN TO BE DEPOSITED UNDER THE LAND TITLES ACT

PLAN 4R-26246
RECEIVED AND DEPOSITED DATE June 5, 2012

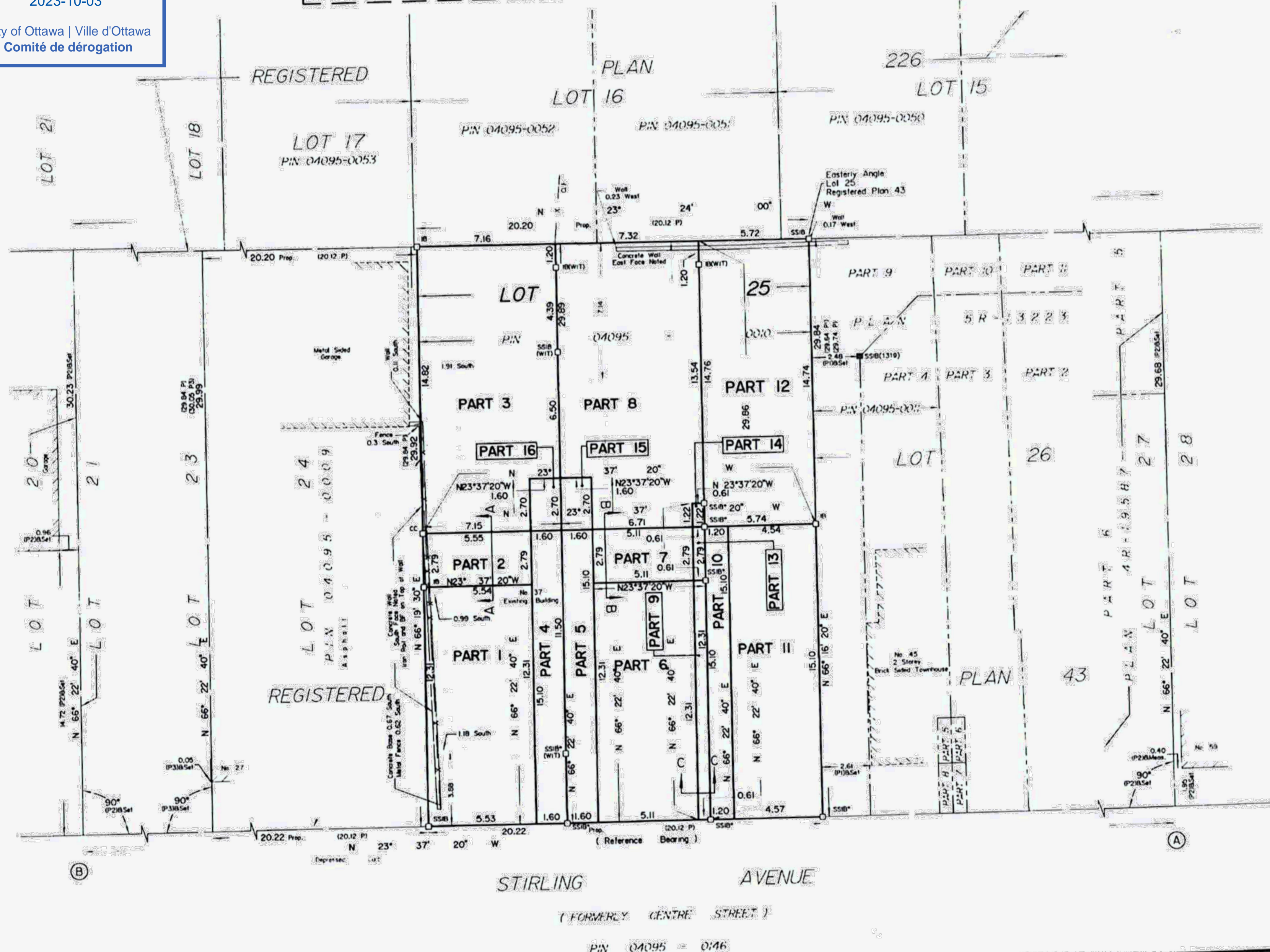
DATE June 5, 2012

Edward M. Lancaster
EDWARD M. LANCASTER
ONTARIO LAND SURVEYOR

Edmond Representations
LAND REGISTRAR FOR THE
LAND TITLES DIVISION OF
OTTAWA-CARLETON NO. 4

THIS IS A STRATA PLAN OF SURVEY

SCHEDULE			
PART	LOT	REGISTERED PLAN	PIN
1-16 (inclusive)	All of 25	43	All of 04095-0010



PLAN OF SURVEY OF
LOT 25
REGISTERED PLAN 43
CITY OF OTTAWA
Prepared by Annis, O'Sullivan, Vollebek Ltd.



Metric
DISTANCES AND COORDINATES SHOWN ON THIS PLAN
ARE IN METRES AND CAN BE CONVERTED TO FEET BY
DIVIDING BY 0.3048.

Surveyor's Certificate

I CERTIFY THAT

- This survey and plan are correct and in accordance with the Survey Act, the Surveyors Act, the Land Titles Act and the regulations made under them
- The survey was completed on the 29th day of May, 2012

June 5, 2012
Date

Edward M. Lancaster
Ontario Land Surveyor

- Notes & Legend
- Denotes Survey Monument Planted
 - Denotes Survey Monument Found
 - SIB Standard Iron Bar
 - SSIB Short Standard Iron Bar
 - B Iron Bar
 - CC Cut Cross
 - 0.3 Long Survey Monument
 - (WIT) Witness
 - (AOG) Annis, O'Sullivan, Vollebek Ltd
 - Meas Measured
 - (P) Registered Plan 43
 - (P1) Plan 5R-13223
 - (P2) Plan (AOG) February 16, 1994
 - (P3) Plan (AOG) June 29, 1990

Distances shown on this plan are ground distances and can be converted to grid distances by multiplying by the combined scale factor of 0.99994

Bearings are MTM grid, derived from simultaneous GPS observations from monument A to B, shown hereon, having a bearing of N 23° 37' 20" W and are referred to the Central Meridian of MTM Zone 9 (76° 30' West Longitude) MTM NAD-83 (original)

Coordinate values are to urban accuracy in accordance with O Reg. 216/10

Point A Northing 5029726.47 Easting 365286.73
Point B Northing 5029856.75 Easting 365229.75

Caution: Coordinates cannot, in themselves, be used to re-establish corners or boundaries shown on this plan

ELEVATION NOTES

- Elevations shown are geodetic datum referred to Natural Resources Canada benchmark No. 001196303606 Having an elevation of 67.24 metres
- It is the responsibility of the user of this information to verify that the job benchmark has not been altered or disturbed and that its relative elevation and description agrees with the information shown on this drawing

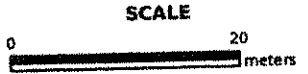
ANNIS, O'SULLIVAN, VOLLEBEK LTD.
14 Concourse Gate, Suite 500
Nepean, Ont. K2E 7S6
Phone: (613) 727-0850 / Fax: (613) 727-2074
Email: annis@annisvollebek.com

Ontario
Land Surveyors Job No. 1156710 Metal Lt. 25 OF 43 P. 6



ServiceOntario

PRINTED ON 16 AUG, 2017 AT 15:21:42 FOR JHAMILTON



PROPERTY INDEX MAP OTTAWA-CARLETON(No. 04)

LEGEND

FREEHOLD PROPERTY	
LEASEHOLD PROPERTY	
LIMITED INTEREST PROPERTY	
CONDOMINIUM PROPERTY	
RETIRED PIN (MAP UPDATE PENDING)	
PROPERTY NUMBER	0449
BLOCK NUMBER	08050
GEOGRAPHIC FABRIC	
EASEMENT	

THIS IS NOT A PLAN OF SURVEY

NOTES

REVIEW THE TITLE RECORDS FOR COMPLETE PROPERTY INFORMATION AS THIS MAP MAY NOT REFLECT RECENT REGISTRATIONS

THIS MAP WAS COMPILED FROM PLANS AND DOCUMENTS RECORDED IN THE LAND REGISTRATION SYSTEM AND HAS BEEN PREPARED FOR PROPERTY INDEXING PURPOSES ONLY

FOR DIMENSIONS OF PROPERTIES BOUNDARIES SEE RECORDED PLANS AND DOCUMENTS

ONLY MAJOR EASEMENTS ARE SHOWN

REFERENCE PLANS UNDERLYING MORE RECENT REFERENCE PLANS ARE NOT ILLUSTRATED





Legend

- Property Boundary
- Proposed Development
- * Tree (Critical Root Zone)



GEMTEC
CONSULTING ENGINEERS
AND SCIENTISTS

32 Sheale Drive,
Ottawa, ON K2K 2A9
T: (613) 836-1422
www.gemtec.ca
ottawa@gemtec.ca

Client: Magenta Mortgage Corporation	Project: 100227.054
--	-------------------------------

Location
41E/41F Stirling Avenue,
Ottawa, Ontario

Drwn By: JD	Chkd By: TW	Site Layout
-----------------------	-----------------------	--------------------

Date: February 2022	Rev.	Figure A.2
© Queen's Printer for Ontario	0	

Coordinate System: NAD 1983 UTM, Zone 18N
Service Layer Credits: Source: Esri, Maxar, GeoEye, Earthstar Geographics, CNES/Airbus DS, USDA, USGS, AeroGRID, IGN, and the GIS User Community
Rideau Valley Conservation Authority (RVCA)



BUILT

41e/f - STIRLING



09-25-2023

Revisions

ISSUED FOR VARIANCE

Notes

- 1. Your note number one.
- 2. Your note number two.
- 3.

NOT FOR CONSTRUCTION

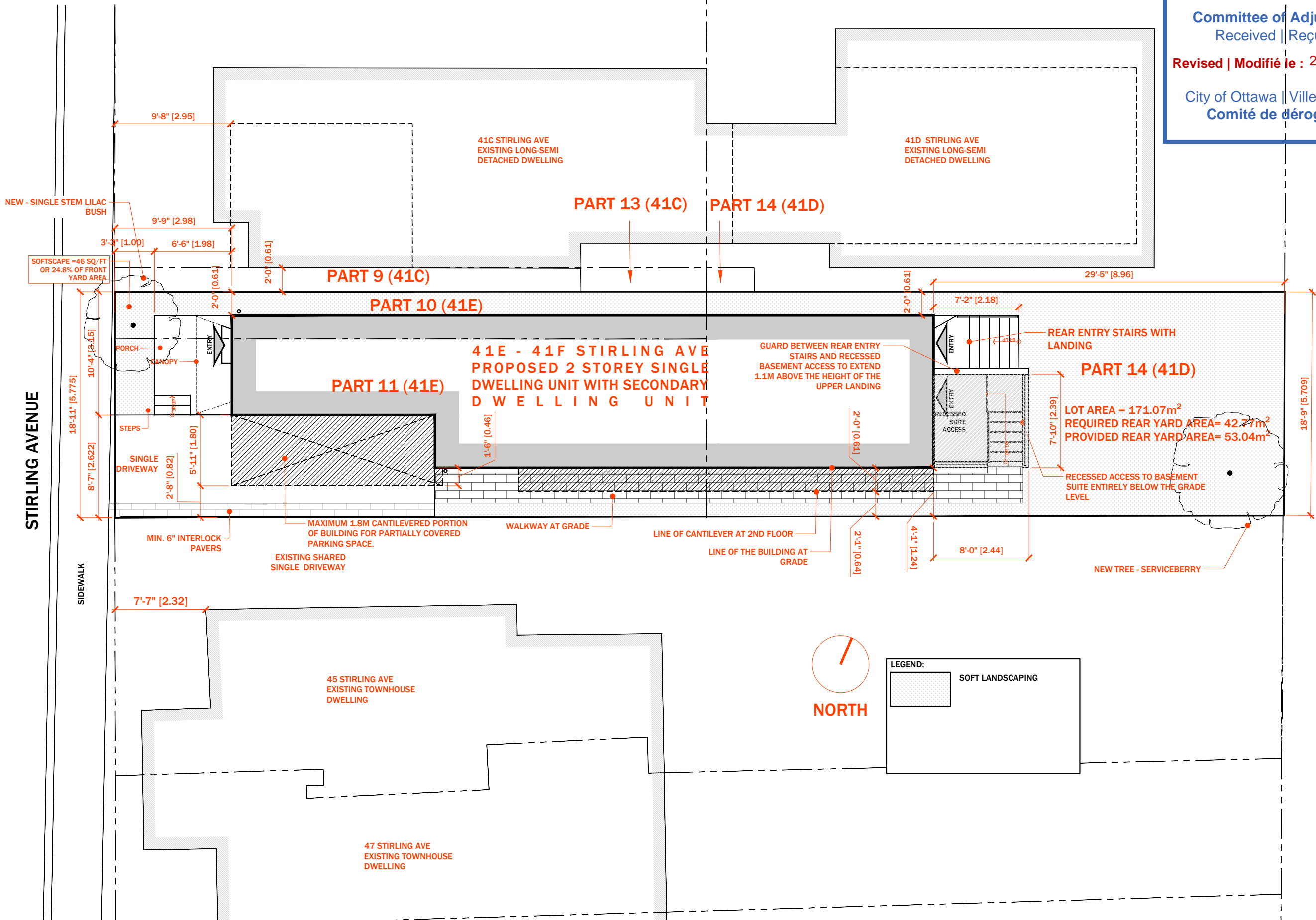
Project North



Scale NTS

Cover Page

Committee of Adjustment
Received | Reçu le
Revised | Modifié le : 2023-10-18
City of Ottawa | Ville d'Ottawa
Comité de dérogation



BUILT

41e/f - STIRLING



Revisions
ISSUED FOR VARIANCE

Notes
1. Your note number one.
2. Your note number two.
3.

NOT FOR CONSTRUCTION

Project North



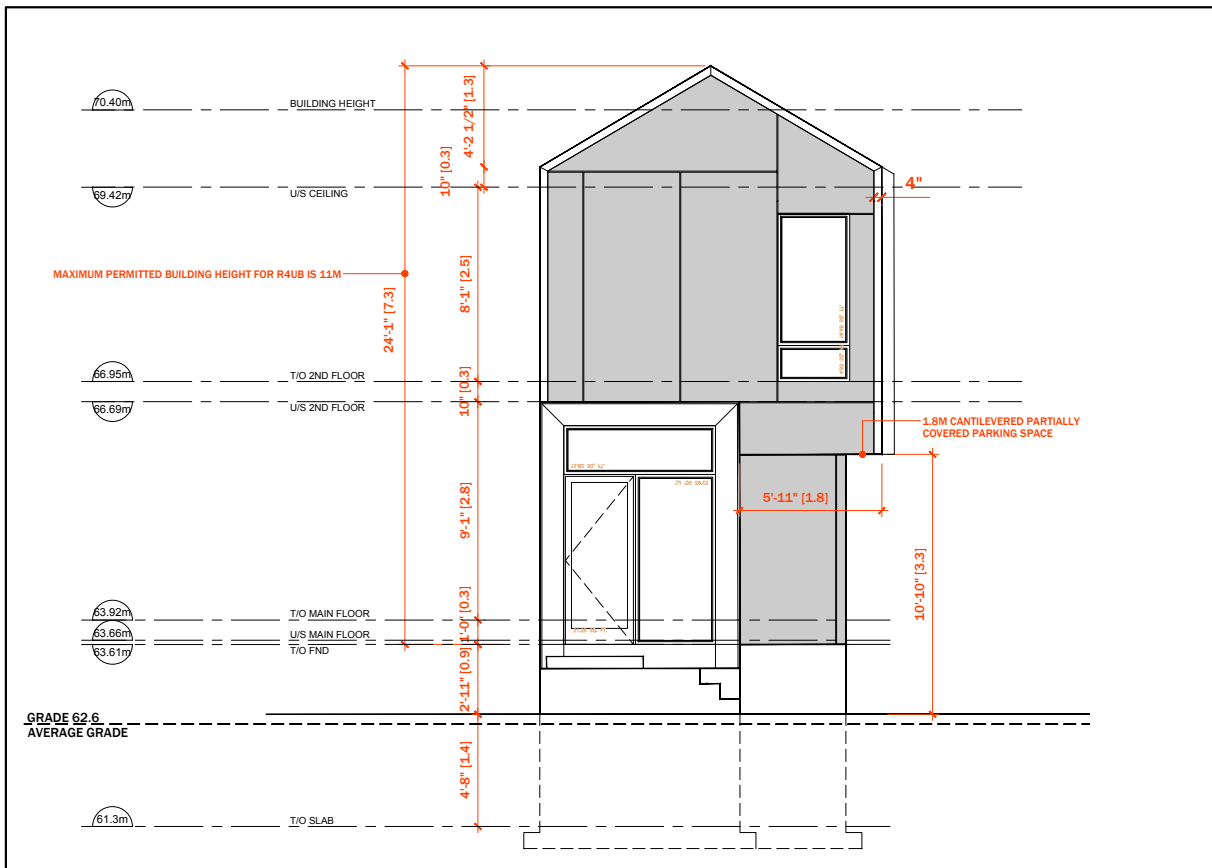
Scale NTS

SITE PLAN

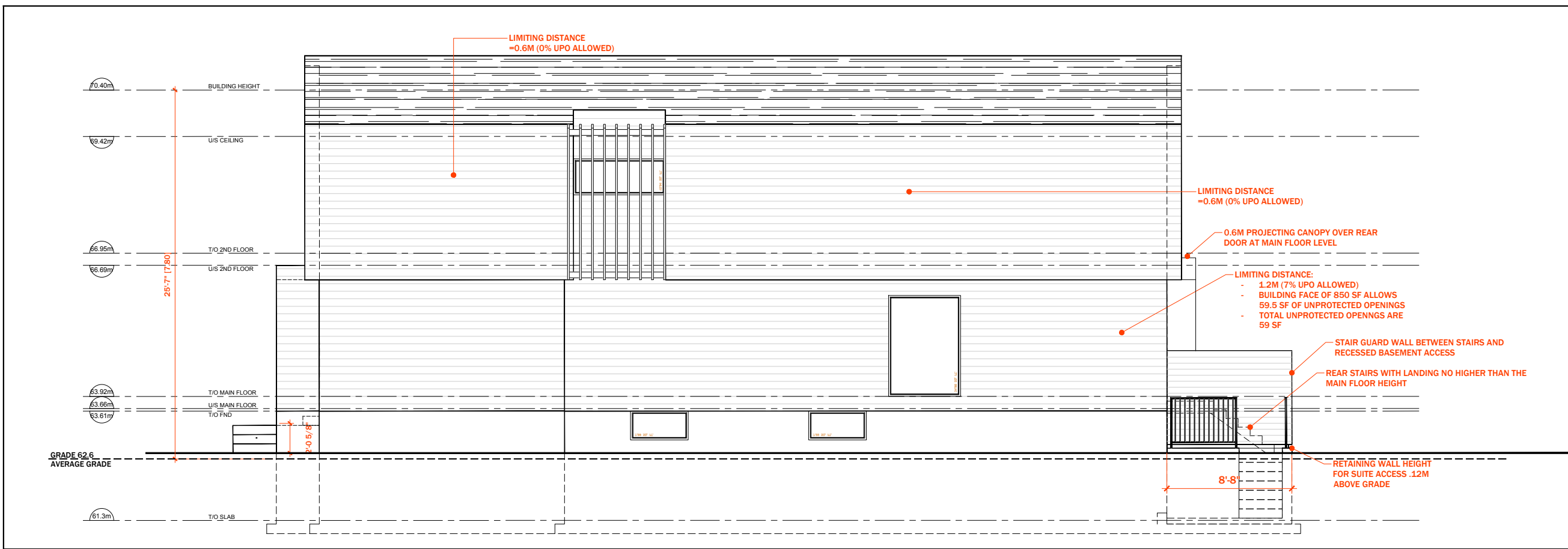
SP

Sheet No. © 2020

1 RIGHT ELEVATION
Scale: 3/16"=1'-0"



2 FRONT ELEVATION
Scale: 1/8"=1'-0"



1 RIGHT ELEVATION
Scale: 1/8"=1'-0"

Committee of Adjustment
Received | Reçu le
Revised | Modifié le : 2023-10-18
City of Ottawa | Ville d'Ottawa
Comité de dérogation

BUILT

41e/f - STIRLING



Revisions
ISSUED FOR VARIANCE

Notes
1. Your note number one.
2. Your note number two.
3.

NOT FOR CONSTRUCTION

Project North

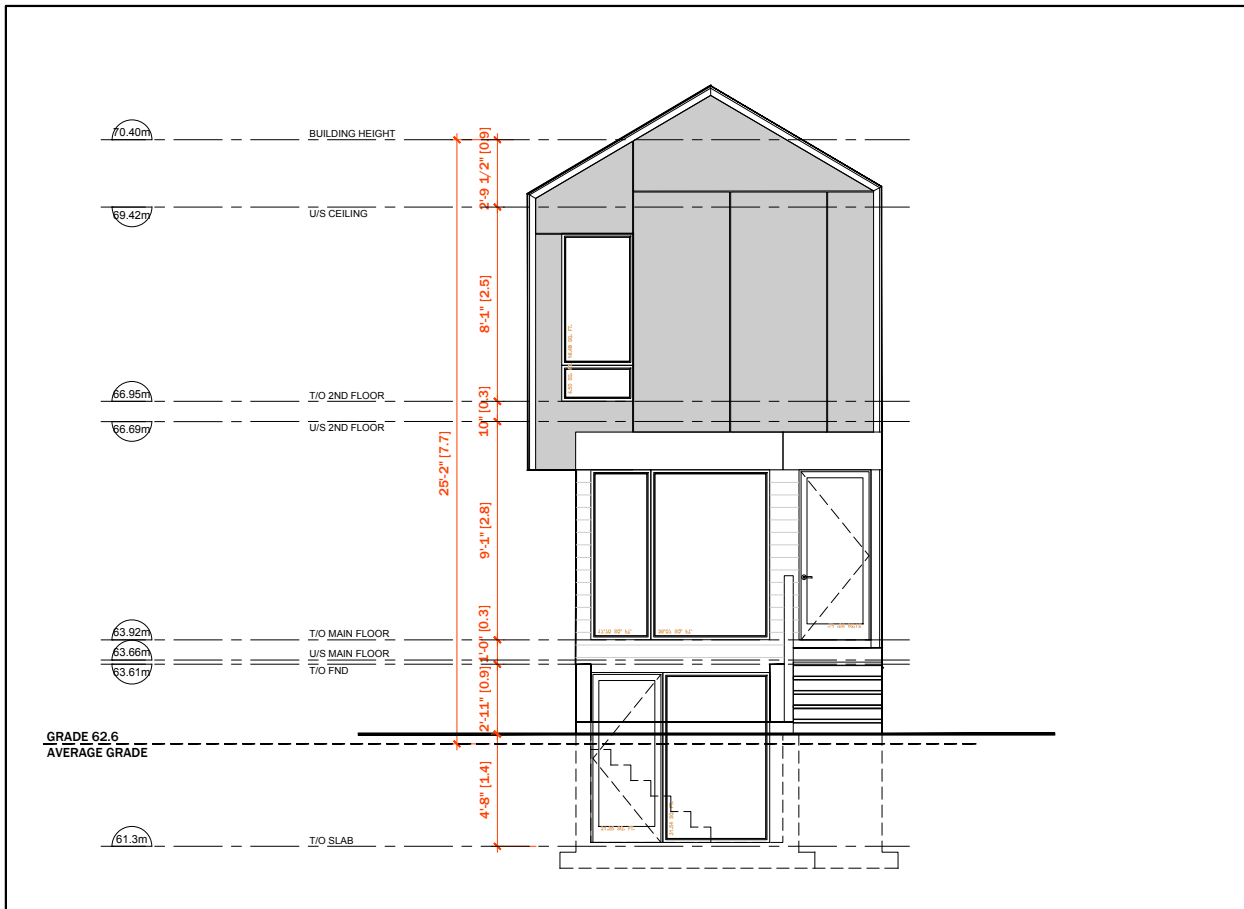


Scale 3/16"=1'-0"

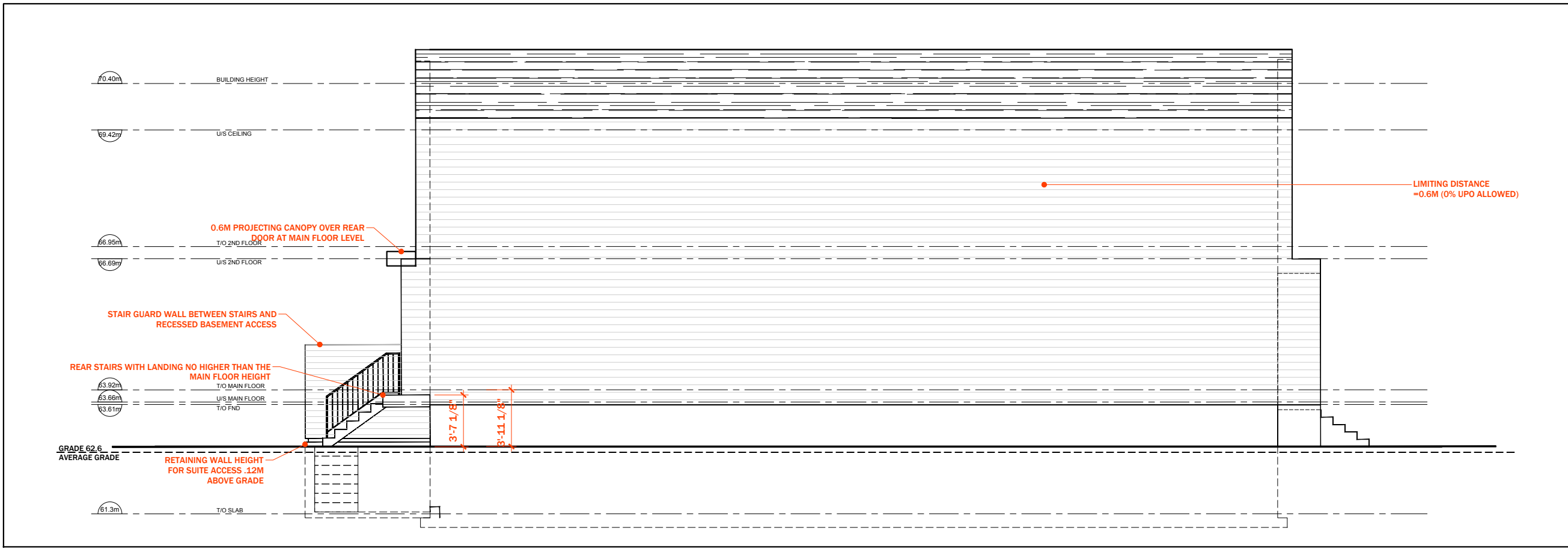
FRONT, RIGHT ELEV

A2

Sheet No. © 2020



2 REAR ELEVATION
Scale: 1/8"=1'-0"



1 LEFT ELEVATION
Scale: 1/8"=1'-0"

Committee of Adjustment
Received | Reçu le
Revised | Modifié le : 2023-10-18
City of Ottawa | Ville d'Ottawa
Comité de dérogation



Revisions
ISSUED FOR VARIANCE

Notes
1. Your note number one.
2. Your note number two.
3.

Project North

Scale 3/16"=1'-0"

REAR, LEFT ELEV

A3

Sheet No. © 2020

BUILT

41e/f - STIRLING

NOT FOR CONSTRUCTION