

SHEET 2 OF 2

REQUIRE THIS PLAN TO BE ACCURATELY LOCATED WITHIN THE LOT CORNER WITH A PERMANENT MARKER

PLAN 4R-2048-0
RECORDED BY THE LAND REGISTRY
DATE 10/11/2014

Surveyed by Annis, O'Sullivan, Vollebæk Ltd.

Scale: 1:200

Notes & Legend

- Dashed Line: Boundary between Parts
- Dotted Line: Boundary between Lots
- Dotted Line: Boundary between Streets
- Dotted Line: Boundary between Servitudes
- Dotted Line: Boundary between Sub-servitudes
- Dotted Line: Boundary between Easements
- Dotted Line: Boundary between Covenants
- Dotted Line: Boundary between Other Rights
- Dotted Line: Boundary between Other Interests
- Dotted Line: Boundary between Other Claims
- Dotted Line: Boundary between Other Matters

Metric: THE FOLLOWING DIMENSIONS AND AREAS ARE METRIC AND CAN BE CONVERTED TO FEET BY DIVIDING BY 0.3048

ANNIS, O'SULLIVAN, VOLLEBAEK LTD.

1000 SHEPPARD AVENUE EAST, SUITE 100, MARKHAM, ONTARIO L3R 0V1

TEL: (905) 477-1100 FAX: (905) 477-1101

WWW.AOSVL.COM



CONTEXT PLAN



ZONING TABLE

Table with 3 columns: Provision, Requirement, Provided. Lists zoning requirements for lot width, area, height, setbacks, and parking.

Table with 3 columns: Provision, Required, Provided. Lists specific parking requirements and dimensions for residential and visitor spaces.

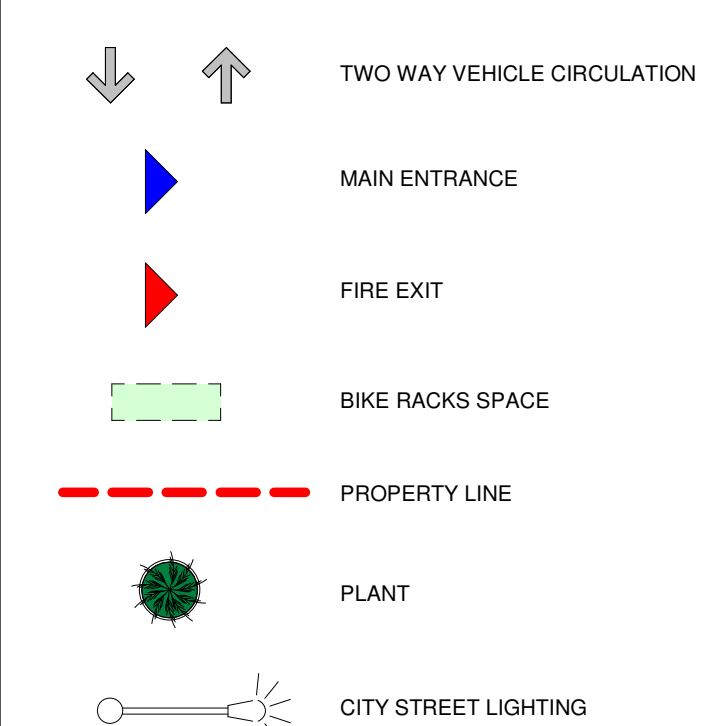
PROJECT INFORMATION

Table with 2 columns: Category and Value. Includes zoning by-law, site area, and building height.

PROJECTS STATISTICS

Table with 2 columns: Category and Value. Shows building height and other project statistics.

SITE PLAN SYMBOLS



DRAWING NOTES

- List of drawing notes detailing property lines, depressed curbs, storm water tanks, and other site-specific instructions.

LOT COVERAGE

Table showing paved surface and building footprint percentages of the total site area.

Table showing refuge requirements for various materials like garbage, recycling, and compost.

Table showing amenity space requirements and provided area.

Table showing unit mix statistics for hotel and residential units.

Table showing residential statistics including studio, bedroom, and 2-bedroom units.

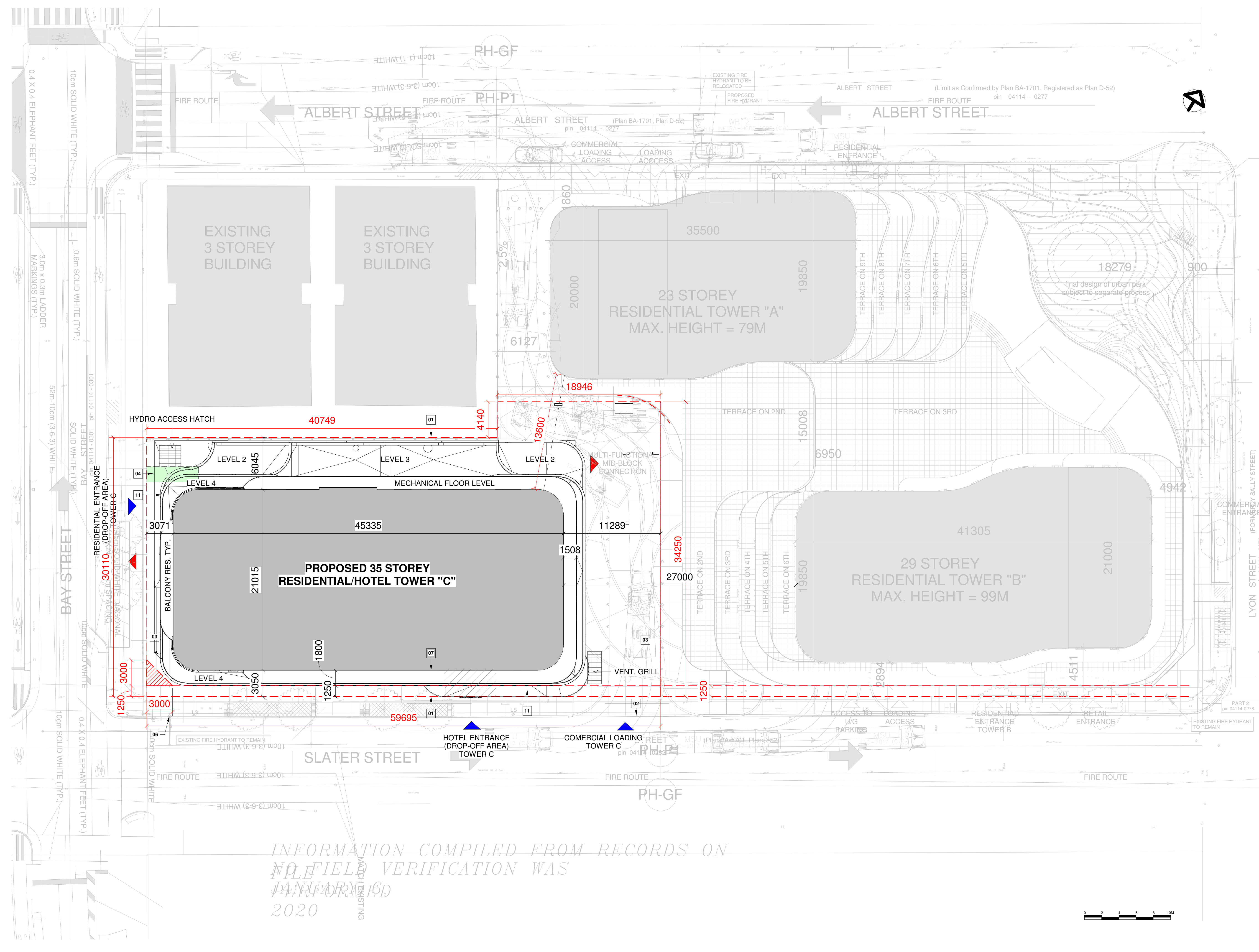
Table showing car parking requirements and provided spaces.

Table showing bicycle parking requirements and provided spaces.

Table showing ground floor, basement, and other floor details.

DRAWINGS LIST

Table listing drawing numbers and sheet names, ranging from site plan zoning info to exterior render images.



INFORMATION COMPILED FROM RECORDS ON FILE. FIELD VERIFICATION WAS PERFORMED 2020.

1 SITE PLAN- A-001 1 : 200

CIVIL ENGINEER

NCK Inc. 1200 Av. McGill College #900, Montréal QC H3B 4G7. Tel: (514) 878-3021.

SURVEYOR

Annis O'Sullivan Vollebekkk Ltd. Ontario Land Surveyors. 14 Concourse Gate, Suite 500, Nepean, Ontario K2E 7S6.

LEGAL DESCRIPTION

PART OF LOT 12,13 and 14 (North Slater St.) REGISTERED PLAN 3922 CITY OF OTTAWA

GEOTECHNICAL ENGINEER

Paterson group 154 Colonnade Road South Ottawa, Ontario K2E 7J5. Tel: 613 226-7381.

URBAN PLANNER

FoTenn Consultants Inc. 223 McLeod Street Ottawa, ON Canada, K2P 0Z8. Tel: (613) 730-5709.

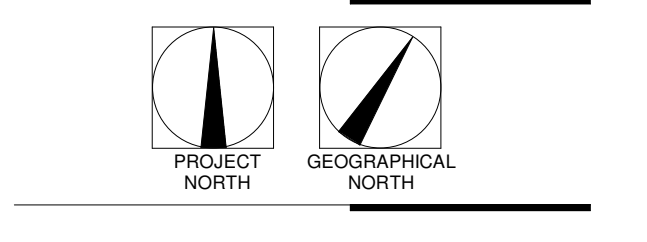
PROJECT DEVELOPER

Rimap Development 2700 rue Rufus-Rockhead, Suite 100 Montreal, Quebec, H2Z 0A688. Tel: (514) 738-4725.



424, rue Guy, Bureau 104, Montréal, QC H3J 1S6. Tel: 514-950-5338. Web: info@geigerhuot.com

GENERAL NOTES: Do not scale directly from the drawings. All dimensions and general conditions must be verified on site before any work begins.



Revision Schedule table with columns for Date, Revision, and Description.

Table for city comments and approvals, including fields for City Comments, Issued For, and Date.



395, Slater, Ottawa. 395, Slater St., Ottawa.

Design Title: SITE PLAN, ZONING INFO, PROJECT CONTACTS.

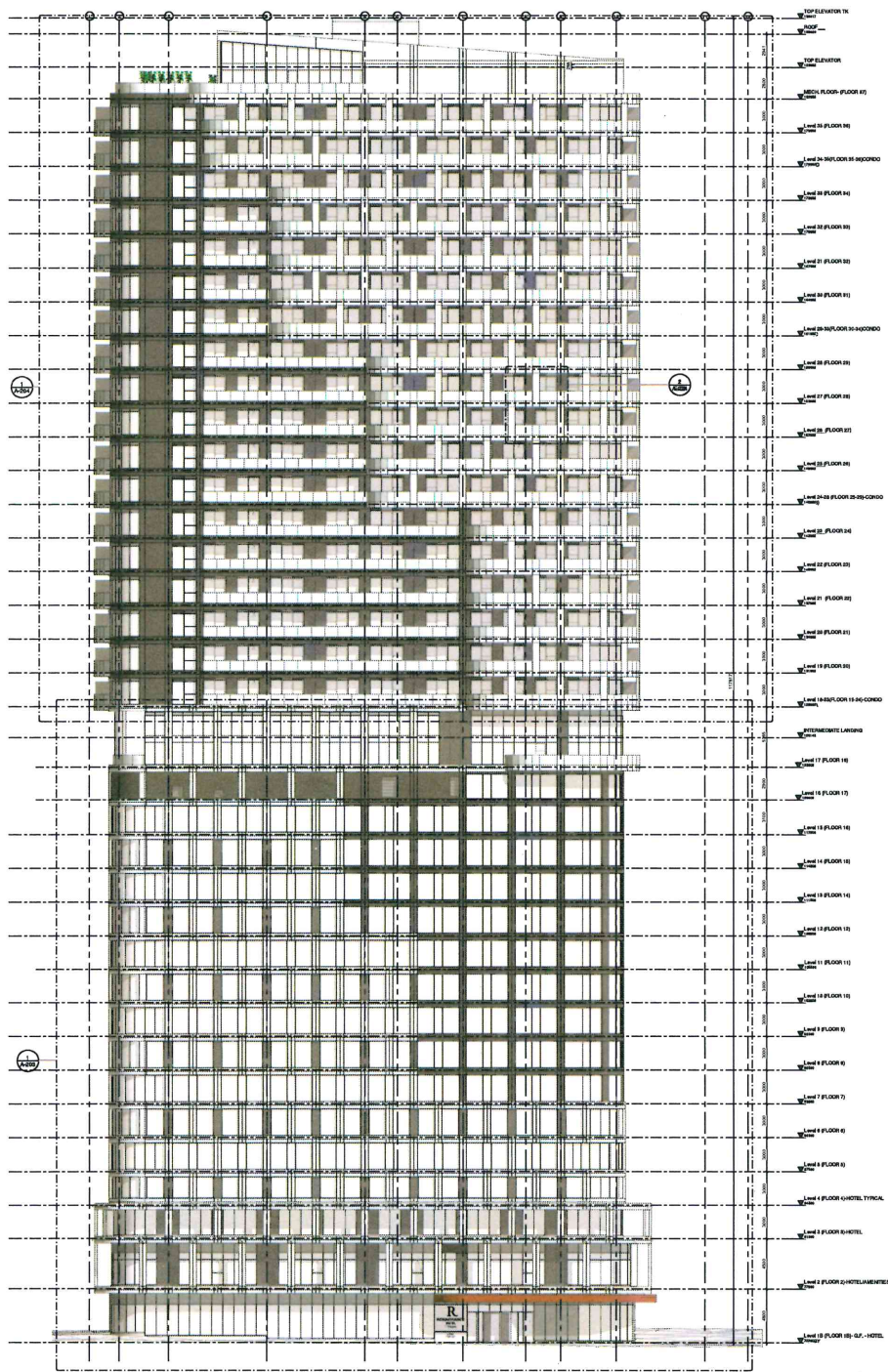
Table with drawing metadata including scale (1:200), date (15 May 2022), and sheet number (A-001).

GENERAL NOTES:
 Do not scale directly from the drawings.
 All dimensions and general construction shall be verified on site before any work begins.
 Do not proceed to work if construction.
 This drawing should be read together with the work order specifications and general notes.

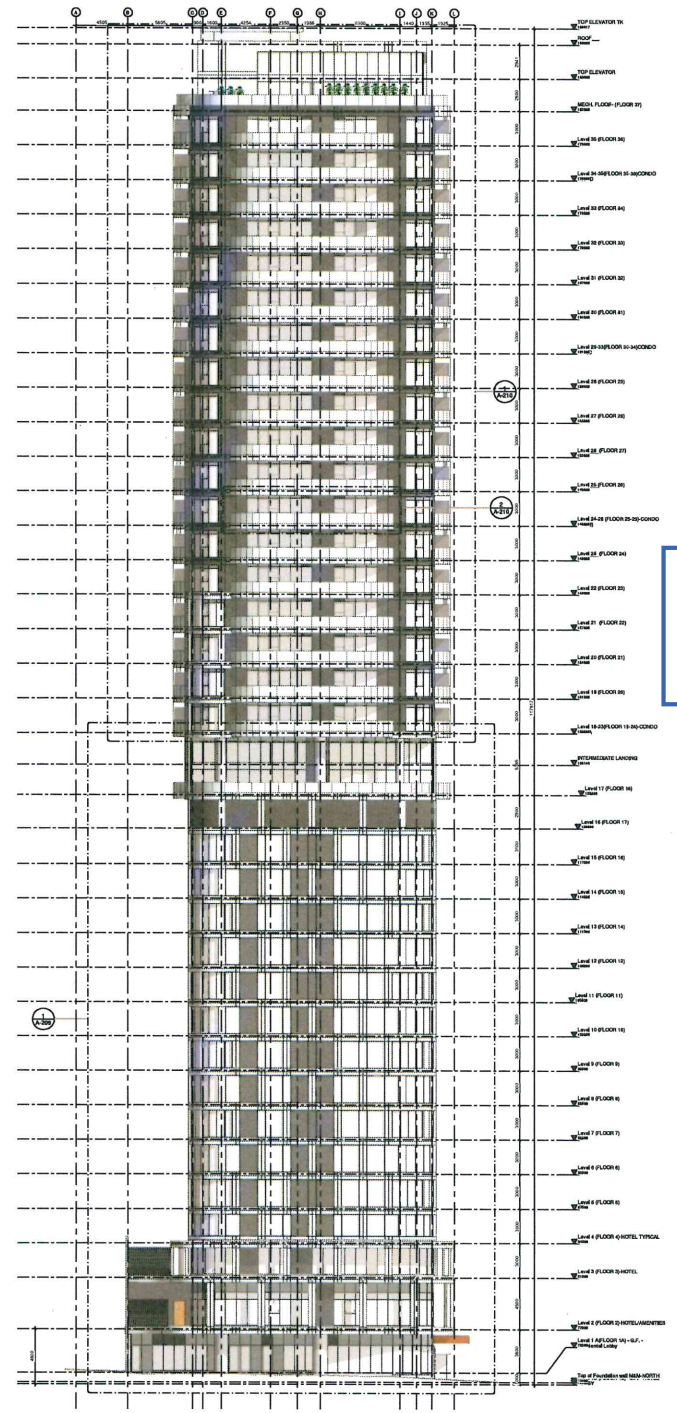


Project: 395, Slater St. - Ottawa
 Date: 2023-10-04

Committee of Adjunct
 Received | Reçu le
 2023-10-04
 City of Ottawa | Ville d'Ottawa
 Comité de dérogation



1 SOUTH ELEVATION-Slater.
 1:150



2 WEST ELEVATION-Bay.
 1:150



395, Slater St., Ottawa
 395, Slater St. - Ottawa

ELEVATIONS-SOUTH AND WEST

DATE:	1:150	DESIGNED BY:	SLA
CHK:	1:150	APPROVED BY:	SLA
DR:	2023-10-04	DATE:	2023-10-04
DR:	2023-10-04	DATE:	2023-10-04

GENERAL NOTES:
 Do not scale directly from the drawings.
 All dimensions and general conditions must be verified on site for all work to be completed.
 Do not proceed in case of contradiction.
 This drawing should be read together with the referenced specifications and general notes.



General Contractor



Developer



Revision Schedule

NO.	REVISION	DATE
1	ISSUED FOR PERMIT	08/11/2011



Subcontractor



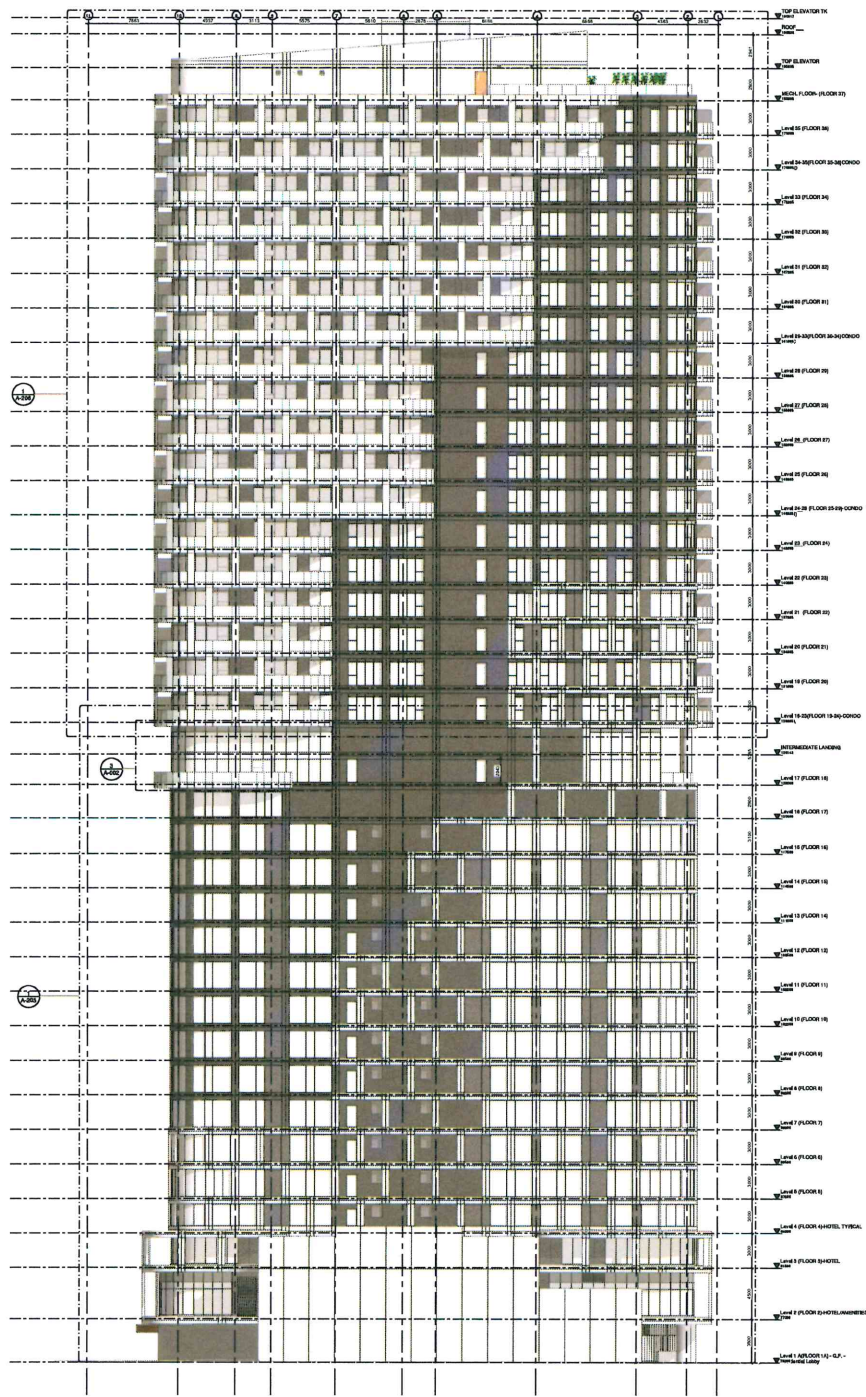
395, Slater

395, Slater St., Ottawa

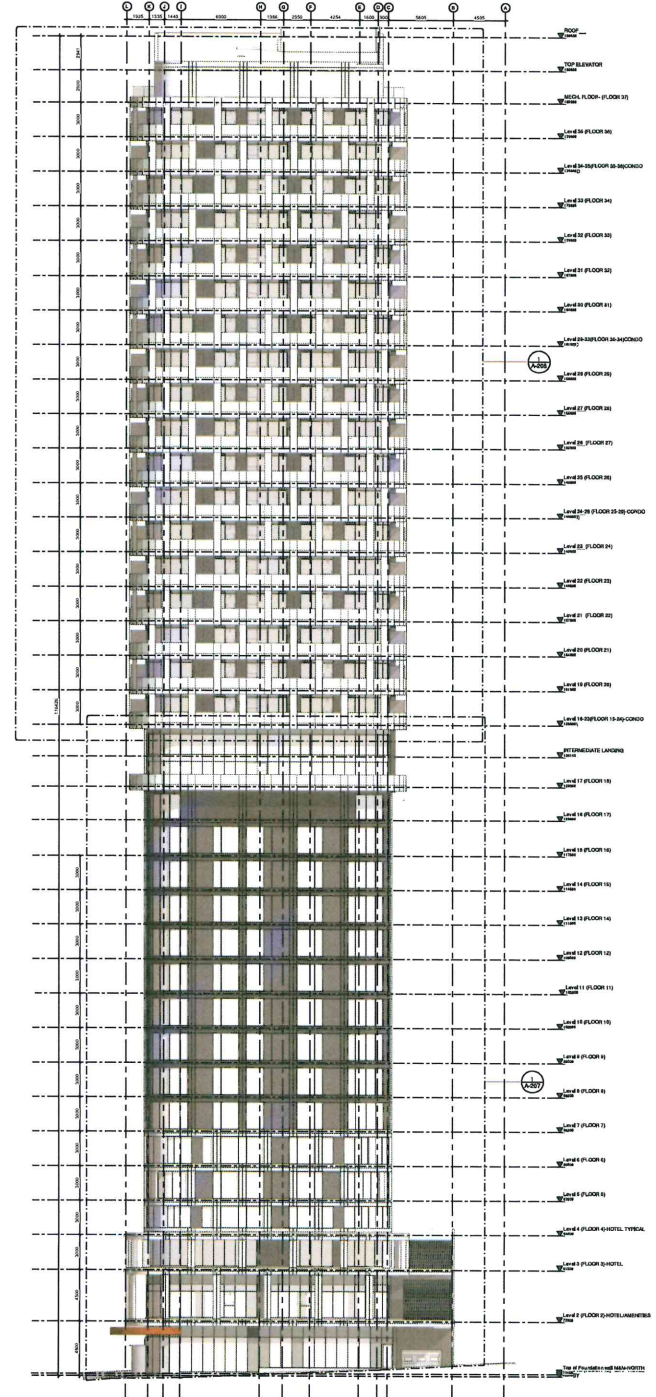
395, Slater St. - Ottawa

ELEVATIONS-NORTH AND EAST

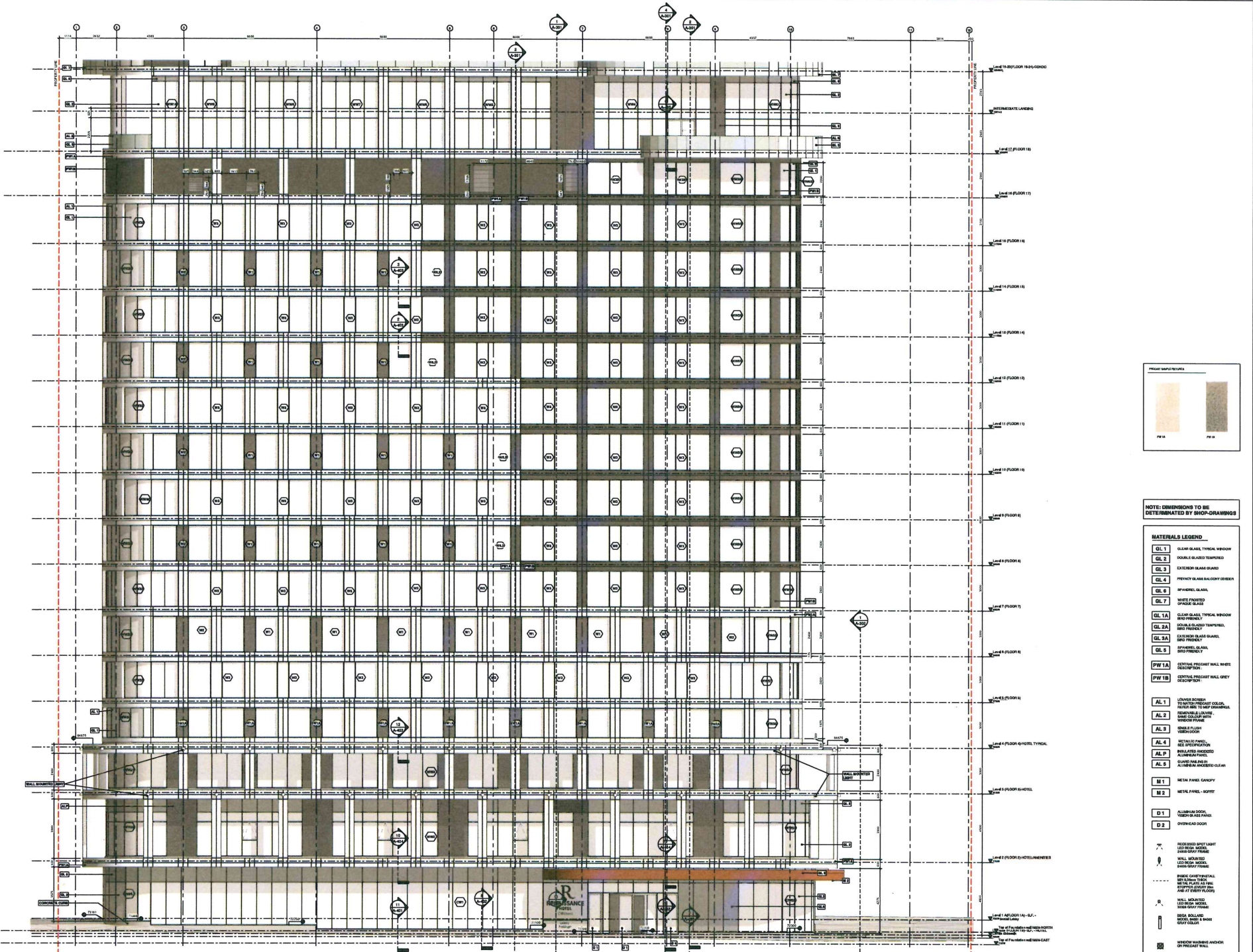
DATE	SCALE	DESIGNED BY	BY
08/11/2011	1:100	GAJ	GAJ
08/11/2011	1:100	GAJ	GAJ
08/11/2011	1:100	GAJ	GAJ



1 NORTH ELEVATION.
 1:100



2 EAST ELEVATION.
 1:100



SOUTH ELEVATION GF-18TH FLOOR
1:75

GeigertH
211 1st St., Suite 100, New York, NY 10013
Tel: 212 512 1338 Fax: 212 512 1339
www.geigert.com
info@geigert.com

GENERAL NOTES:
Do not scale directly from the drawings.
All dimensions and general conditions must be
verified on site before any work begins.
Do not proceed to order of construction.
The quality should be read together with the
technical specifications and general notes.



Revision Schedule	
REV.	DESCRIPTION
1	ISSUED FOR PERMIT
2	ISSUED FOR CONSTRUCTION



NOTE: DIMENSIONS TO BE DETERMINED BY SHOP-DRAWINGS

MATERIALS LEGEND

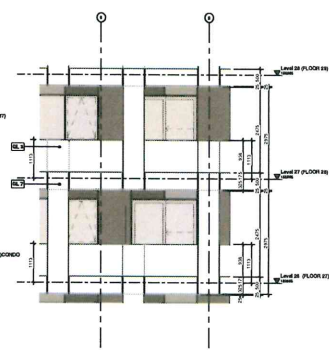
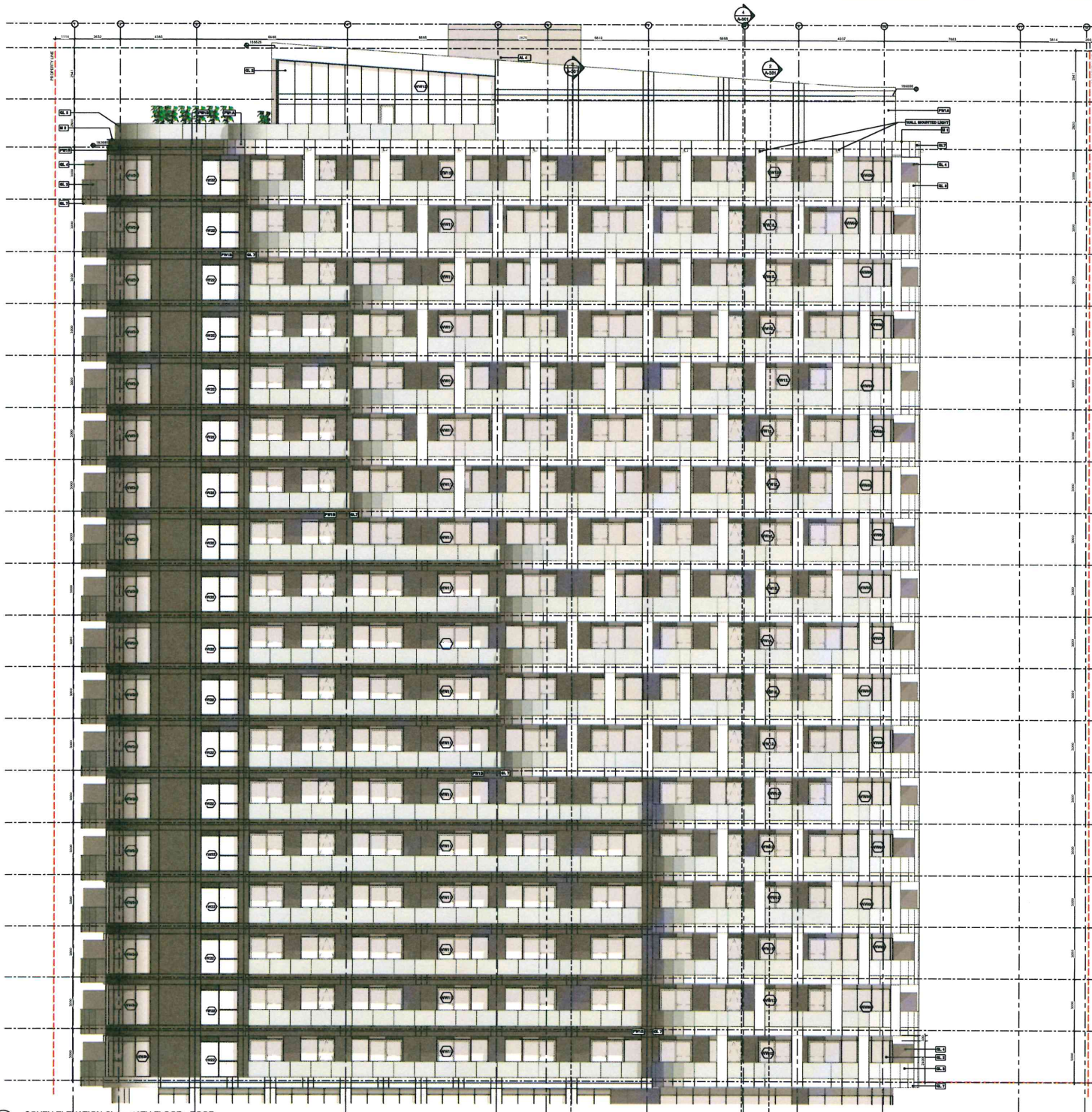
- GL 1** CLEAR GLASS TYPICAL WINDOW
- GL 2** DOUBLE GLAZED TEMPERED
- GL 3** EXTERIOR GLASS CURVED
- GL 4** TRENCH AREA GLASS/TIGHT EDGE
- GL 6** SPANSEL GLASS
- GL 7** WHITE FINISH SPIDRE GLASS
- GL 1A** CLEAR GLASS TYPICAL WINDOW
- GL 2A** DOUBLE GLAZED TEMPERED
- GL 3A** EXTERIOR GLASS CURVED
- GL 5** SPANSEL GLASS
- GL 8** SPANSEL GLASS
- PW 1A** CENTRAL PRECAST WALL WHITE DECOR-FINISH
- PW 1B** CENTRAL PRECAST WALL GREY DECOR-FINISH
- AL 1** LOWER SCREEN TO MATCH PRECAST COLOR, REFER AB TO RHP DRAWING, TYPING AND FINISH
- AL 2** WINDOW GLASS/TIGHT EDGE
- AL 3** WINDOW GLASS/TIGHT EDGE
- AL 4** METALLIC PANEL, SEE SPECIFICATION
- AL 5** INSULATED MIDDLE ALUMINUM PANEL
- AL 6** CLADDING PANEL
- AL 8** CLADDING PANEL - CLEAR
- M 1** METAL PANEL - COPPER
- M 2** METAL PANEL - BRONZE
- D 1** ALUMINUM PANEL - TYPICAL GLASS PANEL
- D 2** OVERHEAD DOOR
- S 1** INSULATED GLASS UNIT
- S 2** INSULATED GLASS UNIT
- W 1** WALL MOUNTED WINDOW
- W 2** WALL MOUNTED WINDOW
- W 3** WALL MOUNTED WINDOW
- W 4** WALL MOUNTED WINDOW
- W 5** WALL MOUNTED WINDOW
- W 6** WALL MOUNTED WINDOW
- W 7** WALL MOUNTED WINDOW
- W 8** WALL MOUNTED WINDOW
- W 9** WALL MOUNTED WINDOW
- W 10** WALL MOUNTED WINDOW
- W 11** WALL MOUNTED WINDOW
- W 12** WALL MOUNTED WINDOW
- W 13** WALL MOUNTED WINDOW
- W 14** WALL MOUNTED WINDOW
- W 15** WALL MOUNTED WINDOW
- W 16** WALL MOUNTED WINDOW
- W 17** WALL MOUNTED WINDOW
- W 18** WALL MOUNTED WINDOW
- W 19** WALL MOUNTED WINDOW
- W 20** WALL MOUNTED WINDOW
- W 21** WALL MOUNTED WINDOW
- W 22** WALL MOUNTED WINDOW
- W 23** WALL MOUNTED WINDOW
- W 24** WALL MOUNTED WINDOW
- W 25** WALL MOUNTED WINDOW
- W 26** WALL MOUNTED WINDOW
- W 27** WALL MOUNTED WINDOW
- W 28** WALL MOUNTED WINDOW
- W 29** WALL MOUNTED WINDOW
- W 30** WALL MOUNTED WINDOW
- W 31** WALL MOUNTED WINDOW
- W 32** WALL MOUNTED WINDOW
- W 33** WALL MOUNTED WINDOW
- W 34** WALL MOUNTED WINDOW
- W 35** WALL MOUNTED WINDOW
- W 36** WALL MOUNTED WINDOW
- W 37** WALL MOUNTED WINDOW
- W 38** WALL MOUNTED WINDOW
- W 39** WALL MOUNTED WINDOW
- W 40** WALL MOUNTED WINDOW
- W 41** WALL MOUNTED WINDOW
- W 42** WALL MOUNTED WINDOW
- W 43** WALL MOUNTED WINDOW
- W 44** WALL MOUNTED WINDOW
- W 45** WALL MOUNTED WINDOW
- W 46** WALL MOUNTED WINDOW
- W 47** WALL MOUNTED WINDOW
- W 48** WALL MOUNTED WINDOW
- W 49** WALL MOUNTED WINDOW
- W 50** WALL MOUNTED WINDOW
- W 51** WALL MOUNTED WINDOW
- W 52** WALL MOUNTED WINDOW
- W 53** WALL MOUNTED WINDOW
- W 54** WALL MOUNTED WINDOW
- W 55** WALL MOUNTED WINDOW
- W 56** WALL MOUNTED WINDOW
- W 57** WALL MOUNTED WINDOW
- W 58** WALL MOUNTED WINDOW
- W 59** WALL MOUNTED WINDOW
- W 60** WALL MOUNTED WINDOW
- W 61** WALL MOUNTED WINDOW
- W 62** WALL MOUNTED WINDOW
- W 63** WALL MOUNTED WINDOW
- W 64** WALL MOUNTED WINDOW
- W 65** WALL MOUNTED WINDOW
- W 66** WALL MOUNTED WINDOW
- W 67** WALL MOUNTED WINDOW
- W 68** WALL MOUNTED WINDOW
- W 69** WALL MOUNTED WINDOW
- W 70** WALL MOUNTED WINDOW
- W 71** WALL MOUNTED WINDOW
- W 72** WALL MOUNTED WINDOW
- W 73** WALL MOUNTED WINDOW
- W 74** WALL MOUNTED WINDOW
- W 75** WALL MOUNTED WINDOW
- W 76** WALL MOUNTED WINDOW
- W 77** WALL MOUNTED WINDOW
- W 78** WALL MOUNTED WINDOW
- W 79** WALL MOUNTED WINDOW
- W 80** WALL MOUNTED WINDOW
- W 81** WALL MOUNTED WINDOW
- W 82** WALL MOUNTED WINDOW
- W 83** WALL MOUNTED WINDOW
- W 84** WALL MOUNTED WINDOW
- W 85** WALL MOUNTED WINDOW
- W 86** WALL MOUNTED WINDOW
- W 87** WALL MOUNTED WINDOW
- W 88** WALL MOUNTED WINDOW
- W 89** WALL MOUNTED WINDOW
- W 90** WALL MOUNTED WINDOW
- W 91** WALL MOUNTED WINDOW
- W 92** WALL MOUNTED WINDOW
- W 93** WALL MOUNTED WINDOW
- W 94** WALL MOUNTED WINDOW
- W 95** WALL MOUNTED WINDOW
- W 96** WALL MOUNTED WINDOW
- W 97** WALL MOUNTED WINDOW
- W 98** WALL MOUNTED WINDOW
- W 99** WALL MOUNTED WINDOW
- W 100** WALL MOUNTED WINDOW



HAGER DESIGN international INC.
395, Slater
395, Slater St., Ottawa
395, Slater St. - Ottawa

SOUTH ELEVATION GF-18TH FLOOR

NO.	DATE	DESIGNED BY	CHECKED BY
1	2011	A.K.	A.K.
2	2011	A.K.	A.K.
3	2011	A.K.	A.K.
4	2011	A.K.	A.K.



2 SOUTH ELEVATION-TYPICAL GLASS LAYOUT
1:50
A-204



NOTE: DIMENSIONS TO BE DETERMINED BY SHOP-DRAWINGS

MATERIALS LEGEND

GL 1	GLASS TYPICAL WINDOW
GL 2	GLASS TYPICAL WINDOW
GL 3	GLASS TYPICAL WINDOW
GL 4	GLASS TYPICAL WINDOW
GL 5	GLASS TYPICAL WINDOW
GL 6	GLASS TYPICAL WINDOW
GL 7	GLASS TYPICAL WINDOW
GL 1A	GLASS TYPICAL WINDOW
GL 2A	GLASS TYPICAL WINDOW
GL 3A	GLASS TYPICAL WINDOW
GL 4A	GLASS TYPICAL WINDOW
GL 5A	GLASS TYPICAL WINDOW
GL 6A	GLASS TYPICAL WINDOW
GL 7A	GLASS TYPICAL WINDOW
GL 1A	GLASS TYPICAL WINDOW
GL 2A	GLASS TYPICAL WINDOW
GL 3A	GLASS TYPICAL WINDOW
GL 4A	GLASS TYPICAL WINDOW
GL 5A	GLASS TYPICAL WINDOW
GL 6A	GLASS TYPICAL WINDOW
GL 7A	GLASS TYPICAL WINDOW
PW 1A	Precast concrete wall with grey finish
PW 1B	Precast concrete wall with grey finish
AL 1	Aluminum extrusion window frame
AL 2	Aluminum extrusion window frame
AL 3	Aluminum extrusion window frame
AL 4	Aluminum extrusion window frame
AL P	Aluminum extrusion window frame
AL S	Aluminum extrusion window frame
M 1	Metal panel - glossy
M 2	Metal panel - matte
D 1	Overhead door
D 2	Overhead door
W	Window
D	Door
R	Recessed door
S	Shower
P	Panel
F	Floor
C	Column
B	Beam
W	Window
D	Door
R	Recessed door
S	Shower
P	Panel
F	Floor
C	Column
B	Beam

1 SOUTH ELEVATION-Slater, 19TH FLOOR - ROOF
1:75
A-204

berger
121 Van Dyke Avenue, Suite 100, Wilmington, DE 19801
410.351.1000
www.berger.com

GENERAL NOTES
Do not scale directly from the drawing.
All dimensions and general conditions must be verified on site before any work begins.
Do not proceed for construction.
This drawing should be read together with the referenced specifications and general notes.

ONTARIO ASSOCIATION OF ARCHITECTS
2019

RIMAP CONSTRUCTION
General Contractor

RIMAP DEVELOPMENT

ARCHITECT'S SEAL
BERGER

CLIENT
395, Slater St., Ottawa

DATE
18/08/2019

DESIGNER
S.J.L.

CHECKED BY
S.J.L.

DATE
18/08/2019

SCALE
1:75

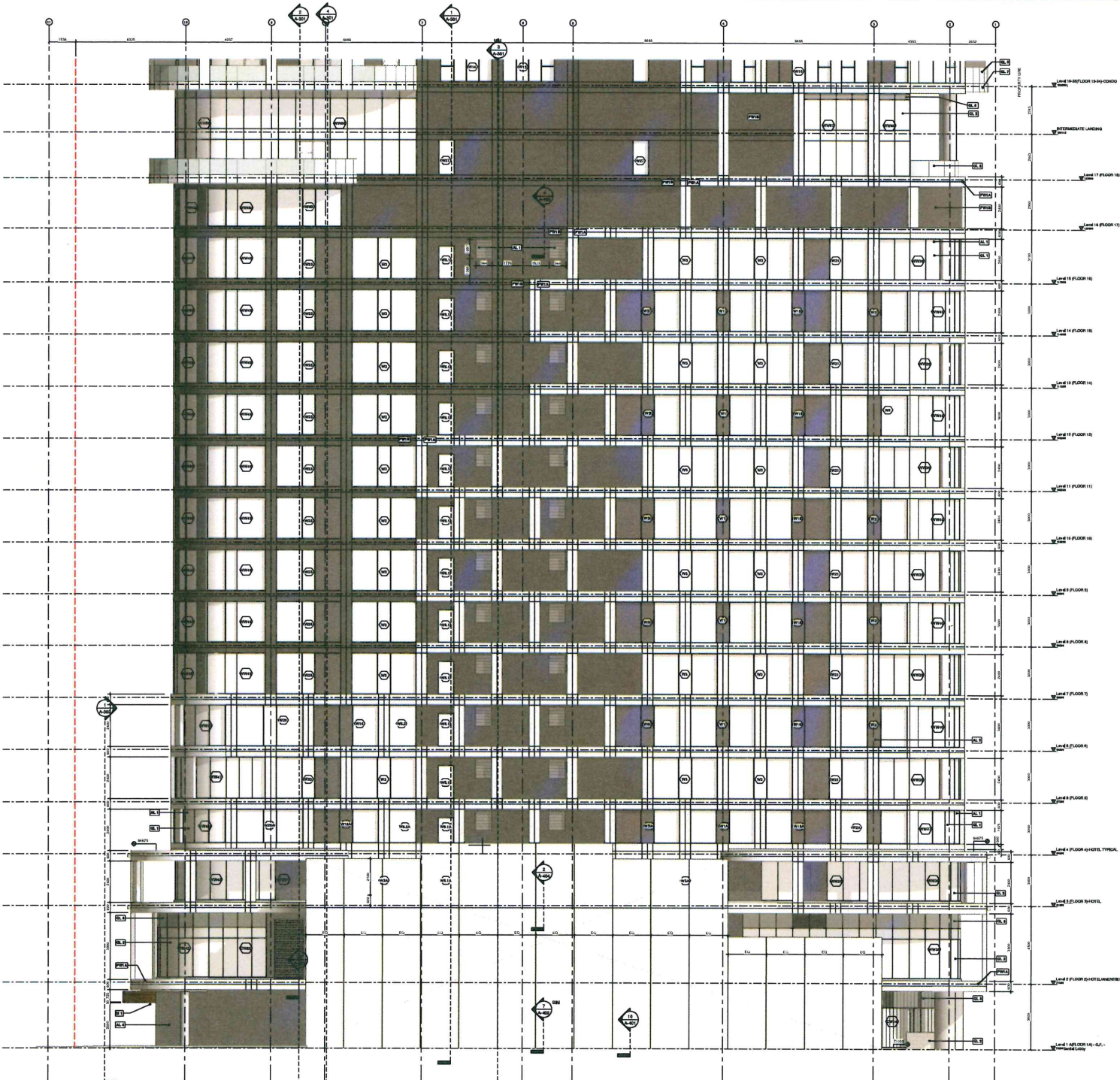
DWG #
18024

PROJECT NAME
395, Slater St., Ottawa

DATE
18/08/2019

SCALE
1:75

DWG #
18024



1 NORTH ELEVATION - GF- 18TH FLOOR
1:76

GeigerHilf
 424 Van Dyke Avenue, 18th Floor, St. Louis, MO 63102
 Tel: 314.591.3334 Fax: 314.591.3335
 www.geigerhilf.com
GENERAL NOTES:
 Do not scale directly from this drawing.
 All dimensions and general conditions must be verified on site before any work begins.
 Do not proceed in case of contradiction.
 This drawing should be read together with the working specifications and general notes.



RIMAP CONSTRUCTION

RIMAP DEVELOPMENT



Project Name:	395, Slater St., Ottawa
Client:	GeigerHilf
Project Number:	18-202



NOTE: DIMENSIONS TO BE DETERMINED BY SHOP-DRAWINGS

MATERIALS LEGEND

GL 1	CLEAR GLASS, TYPICAL WINDOW
GL 2	SOULS GLASS, TYPICAL WINDOW
GL 3	EXTERIOR GLASS SHIELD
GL 4	SPANDREL GLASS BALCONY EGRESS
GL 6	SPANDREL GLASS
GL 7	SPANDREL GLASS
GL 1A	CLEAR GLASS, TYPICAL WINDOW
GL 2A	SOULS GLASS, TYPICAL WINDOW
GL 3A	EXTERIOR GLASS SHIELD
GL 5	SPANDREL GLASS
PW 1A	CENTRAL PRECAST WALL WHITE
PW 1B	CENTRAL PRECAST WALL GREY
AL 1	GLASS WINDOW
AL 2	GLASS WINDOW
AL 3	GLASS WINDOW
AL 4	METAL PANEL
AL P	INSULATED ALUMINUM PANEL
AL S	GLASS AND METAL
M 1	METAL PANEL - GLOSSY
M 2	METAL PANEL - MATT
D 1	ALUMINUM PANEL
D 2	OVERHEAD DOOR

WINDOW MARKING ANCHOR ON PRECAST WALL
 WINDOW MARKING ANCHOR ON SPANDREL PANEL
 WINDOW MARKING ANCHOR ON BALCONY RAIL



NCK

bpa

HAGER DESIGN International INC.

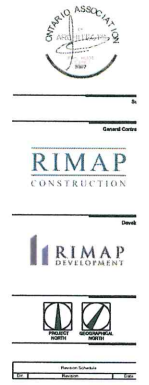
395, Slater St., Ottawa

NORTH ELEVATION - GF- 18TH FLOOR

DATE:	DESIGNED BY:	DESIGNED BY:
18-202	18-202	18-202
18-202	18-202	18-202

DWG # 18021

GeigerHU
 All work shall be in accordance with the drawings. All dimensions and general quantities must be verified on site before any work begins. Do not proceed to work if conditions. This drawing should be read together with the addendum specifications and general notes.



NOTE: DIMENSIONS TO BE DETERMINED BY SHOP-DRAWINGS

MATERIALS LEGEND

GL 1	CLAR GLASS TYPICAL WINDOW
GL 2	DOUBLE GLAZED TEMPERED
GL 3	EXTERIOR GLASS SHIELD
GL 4	FRONTY GLASS BALCONY EXTERIOR
GL 6	SPANNEL GLASS
GL 7	WHITE PATTERNED WINDOW GLASS
GL 1A	CLAR GLASS TYPICAL WINDOW
GL 2A	DOUBLE GLAZED TEMPERED
GL 3A	EXTERIOR GLASS SHIELD
GL 5	SPANNEL GLASS
PW 1A	CENTRAL PRECAST WALL WHITE FINISH
PW 1B	CENTRAL PRECAST WALL GREY FINISH
AL 1	LOWER CORNER METAL PANEL
AL 2	METAL PANEL
AL 3	METAL PANEL
AL 4	METAL PANEL
AL 5	METAL PANEL
AL 6	METAL PANEL
M 1	METAL PANEL - ROOF
M 2	METAL PANEL - ROOF
D 1	GLASS DOOR
D 2	OVERHEAD DOOR
...	...

1 EAST ELEVATION - 19TH FLOOR - ROOF
 A-201 1:75

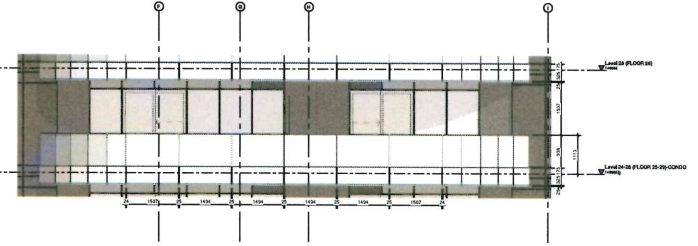
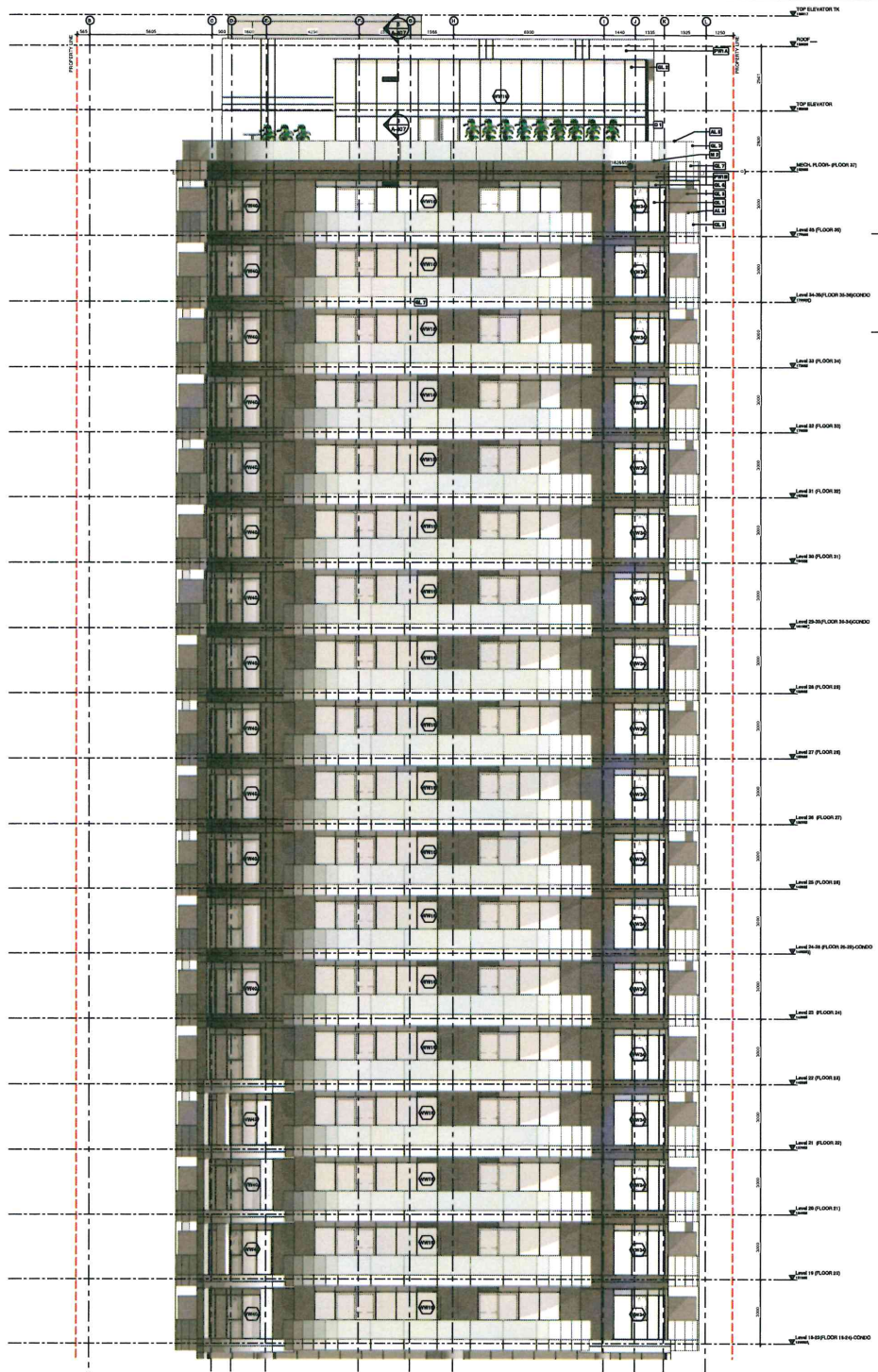
NCK
 bpa
 HAGER DESIGN International

395, Slater
 388, Slater St., Ottawa
 388, Slater St., Ottawa

Design Title
EAST ELEVATION - 19TH FLOOR - ROOF

DATE: 18/05/2014
 DESIGNED BY: E.A.L.
 CHECKED BY: E.A.L.
 APPROVED BY: E.A.L.

DWG # 1802E



2 WEST ELEVATION BALCONY-TYPICAL GLASS LAYOUT
1:50



NOTE: DIMENSIONS TO BE DETERMINED BY SHOP-DRAWINGS

- MATERIALS LEGEND**
- GL 1 CLEAR GLASS TYPICAL WINDOW
 - GL 2 DOUBLE GLAZED TEMPERED
 - GL 3 EXTERIOR GLASS CURTAIN
 - GL 4 TRENCHY GLASS BALCONY DECKING
 - GL 6 SPANNING GLASS
 - GL 7 WHITE FINISHED OFFICE GLAZING
 - GL 1A CLEAR GLASS TYPICAL WINDOW SKY BRIDGE 1
 - GL 2A DOUBLE GLAZED TEMPERED SKY BRIDGE 1
 - GL 3A EXTERIOR GLASS CURTAIN SKY BRIDGE 1
 - GL 6 SPANNING GLASS SKY BRIDGE 1
 - PW 1A CENTRAL PRECAST WALL WHITE DECORATIVE
 - PW 1B CENTRAL PRECAST WALL GREY DECORATIVE
 - AL 1 LOWER SCREENS TO MATCH PRECAST COLOR, REFER REF TO RFP DRAWING. FORM COLOR COORDINATE WINDOW FRAME
 - AL 2
 - AL 3 OVERHEAD DOOR
 - AL 4 METALLIC PANEL, SEE SPECIFICATIONS
 - AL P POLISHED ANODIZED ALUMINUM PANEL
 - AL S GLAZING AND INSULATION ANODIZED CLEAR
 - M 1 METAL PANEL CANOPY
 - M 2 METAL PANEL - ROOF
 - D 1 ALUMINUM DOOR, TYPICAL GLASS PANEL
 - D 2 OVERHEAD DOOR
 - H 1 HANGER BRACKET DETAIL
 - H 2 HANGER BRACKET DETAIL
 - H 3 HANGER BRACKET DETAIL
 - H 4 HANGER BRACKET DETAIL
 - H 5 HANGER BRACKET DETAIL
 - H 6 HANGER BRACKET DETAIL
 - H 7 HANGER BRACKET DETAIL
 - H 8 HANGER BRACKET DETAIL
 - H 9 HANGER BRACKET DETAIL
 - H 10 HANGER BRACKET DETAIL
 - H 11 HANGER BRACKET DETAIL
 - H 12 HANGER BRACKET DETAIL
 - H 13 HANGER BRACKET DETAIL
 - H 14 HANGER BRACKET DETAIL
 - H 15 HANGER BRACKET DETAIL
 - H 16 HANGER BRACKET DETAIL
 - H 17 HANGER BRACKET DETAIL
 - H 18 HANGER BRACKET DETAIL
 - H 19 HANGER BRACKET DETAIL
 - H 20 HANGER BRACKET DETAIL
 - H 21 HANGER BRACKET DETAIL
 - H 22 HANGER BRACKET DETAIL
 - H 23 HANGER BRACKET DETAIL
 - H 24 HANGER BRACKET DETAIL
 - H 25 HANGER BRACKET DETAIL
 - H 26 HANGER BRACKET DETAIL
 - H 27 HANGER BRACKET DETAIL
 - H 28 HANGER BRACKET DETAIL
 - H 29 HANGER BRACKET DETAIL
 - H 30 HANGER BRACKET DETAIL
 - H 31 HANGER BRACKET DETAIL
 - H 32 HANGER BRACKET DETAIL
 - H 33 HANGER BRACKET DETAIL
 - H 34 HANGER BRACKET DETAIL
 - H 35 HANGER BRACKET DETAIL
 - H 36 HANGER BRACKET DETAIL
 - H 37 HANGER BRACKET DETAIL
 - H 38 HANGER BRACKET DETAIL
 - H 39 HANGER BRACKET DETAIL
 - H 40 HANGER BRACKET DETAIL
 - H 41 HANGER BRACKET DETAIL
 - H 42 HANGER BRACKET DETAIL
 - H 43 HANGER BRACKET DETAIL
 - H 44 HANGER BRACKET DETAIL
 - H 45 HANGER BRACKET DETAIL
 - H 46 HANGER BRACKET DETAIL
 - H 47 HANGER BRACKET DETAIL
 - H 48 HANGER BRACKET DETAIL
 - H 49 HANGER BRACKET DETAIL
 - H 50 HANGER BRACKET DETAIL
 - H 51 HANGER BRACKET DETAIL
 - H 52 HANGER BRACKET DETAIL
 - H 53 HANGER BRACKET DETAIL
 - H 54 HANGER BRACKET DETAIL
 - H 55 HANGER BRACKET DETAIL
 - H 56 HANGER BRACKET DETAIL
 - H 57 HANGER BRACKET DETAIL
 - H 58 HANGER BRACKET DETAIL
 - H 59 HANGER BRACKET DETAIL
 - H 60 HANGER BRACKET DETAIL
 - H 61 HANGER BRACKET DETAIL
 - H 62 HANGER BRACKET DETAIL
 - H 63 HANGER BRACKET DETAIL
 - H 64 HANGER BRACKET DETAIL
 - H 65 HANGER BRACKET DETAIL
 - H 66 HANGER BRACKET DETAIL
 - H 67 HANGER BRACKET DETAIL
 - H 68 HANGER BRACKET DETAIL
 - H 69 HANGER BRACKET DETAIL
 - H 70 HANGER BRACKET DETAIL
 - H 71 HANGER BRACKET DETAIL
 - H 72 HANGER BRACKET DETAIL
 - H 73 HANGER BRACKET DETAIL
 - H 74 HANGER BRACKET DETAIL
 - H 75 HANGER BRACKET DETAIL
 - H 76 HANGER BRACKET DETAIL
 - H 77 HANGER BRACKET DETAIL
 - H 78 HANGER BRACKET DETAIL
 - H 79 HANGER BRACKET DETAIL
 - H 80 HANGER BRACKET DETAIL
 - H 81 HANGER BRACKET DETAIL
 - H 82 HANGER BRACKET DETAIL
 - H 83 HANGER BRACKET DETAIL
 - H 84 HANGER BRACKET DETAIL
 - H 85 HANGER BRACKET DETAIL
 - H 86 HANGER BRACKET DETAIL
 - H 87 HANGER BRACKET DETAIL
 - H 88 HANGER BRACKET DETAIL
 - H 89 HANGER BRACKET DETAIL
 - H 90 HANGER BRACKET DETAIL
 - H 91 HANGER BRACKET DETAIL
 - H 92 HANGER BRACKET DETAIL
 - H 93 HANGER BRACKET DETAIL
 - H 94 HANGER BRACKET DETAIL
 - H 95 HANGER BRACKET DETAIL
 - H 96 HANGER BRACKET DETAIL
 - H 97 HANGER BRACKET DETAIL
 - H 98 HANGER BRACKET DETAIL
 - H 99 HANGER BRACKET DETAIL
 - H 100 HANGER BRACKET DETAIL

1 WEST ELEVATION-Bay - 19TH FLOOR - ROOF
1:75

GeigerHilf
135 Lee Road, Suite 104, Woodbridge, VA 22191
410.337.1334 Fax 410.337.1335
info@geigerhilf.com

GENERAL NOTES
Do not scale directly from the drawings.
All dimensions and general conditions must be verified on site before any work begins.
Do not proceed to construction.
This drawing should be read together with the referenced specifications and general notes.

ORDNANCE ASSOCIATION

RIMAP CONSTRUCTION

RIMAP DEVELOPMENT

NCK

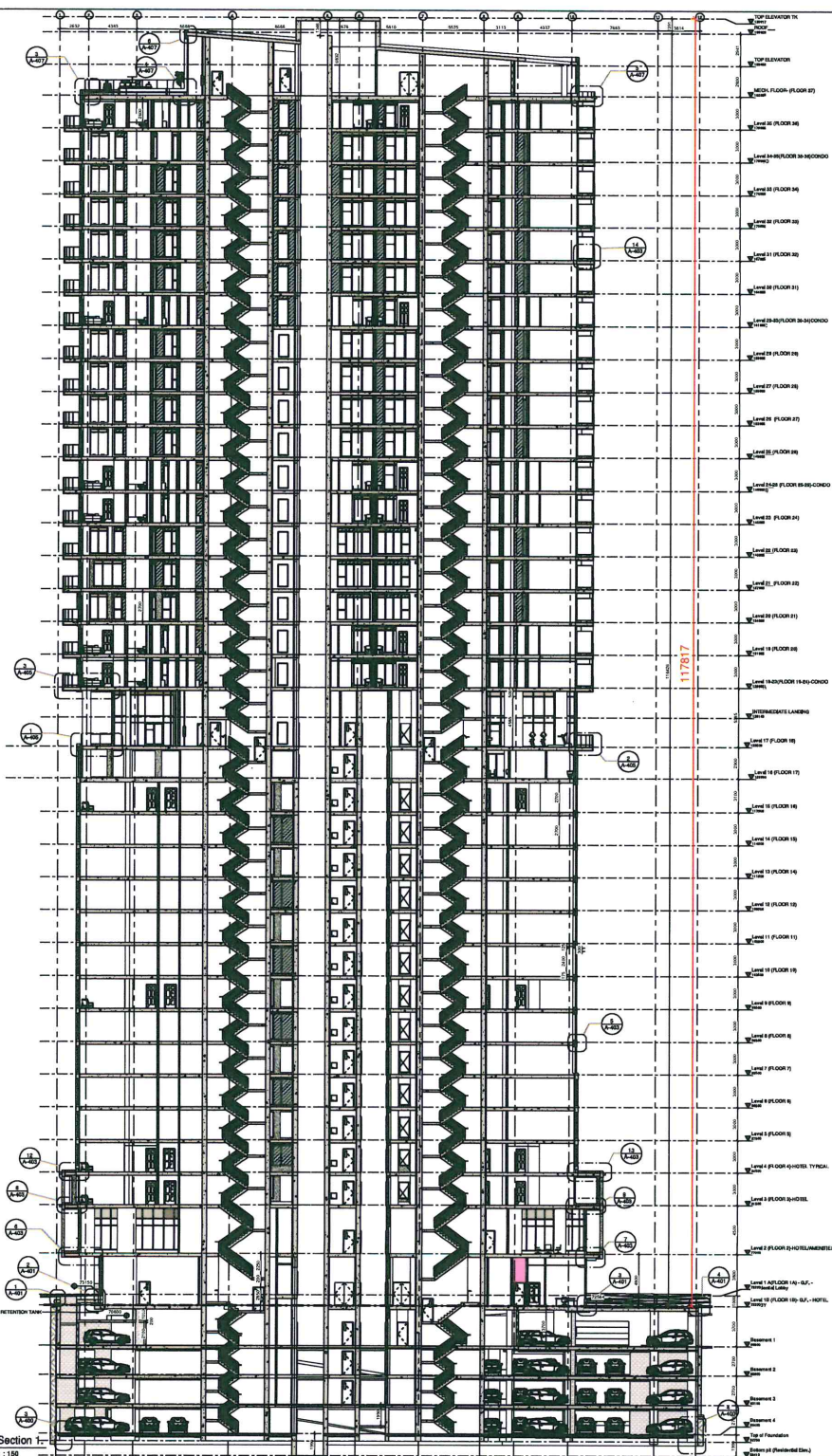
bpa

HAGER DESIGN International INC
14-11404-BAY
395, Slater
395, Slater St., Ottawa
395, Slater St., Ottawa

WEST ELEVATION-Bay - 19TH FLOOR - ROOF

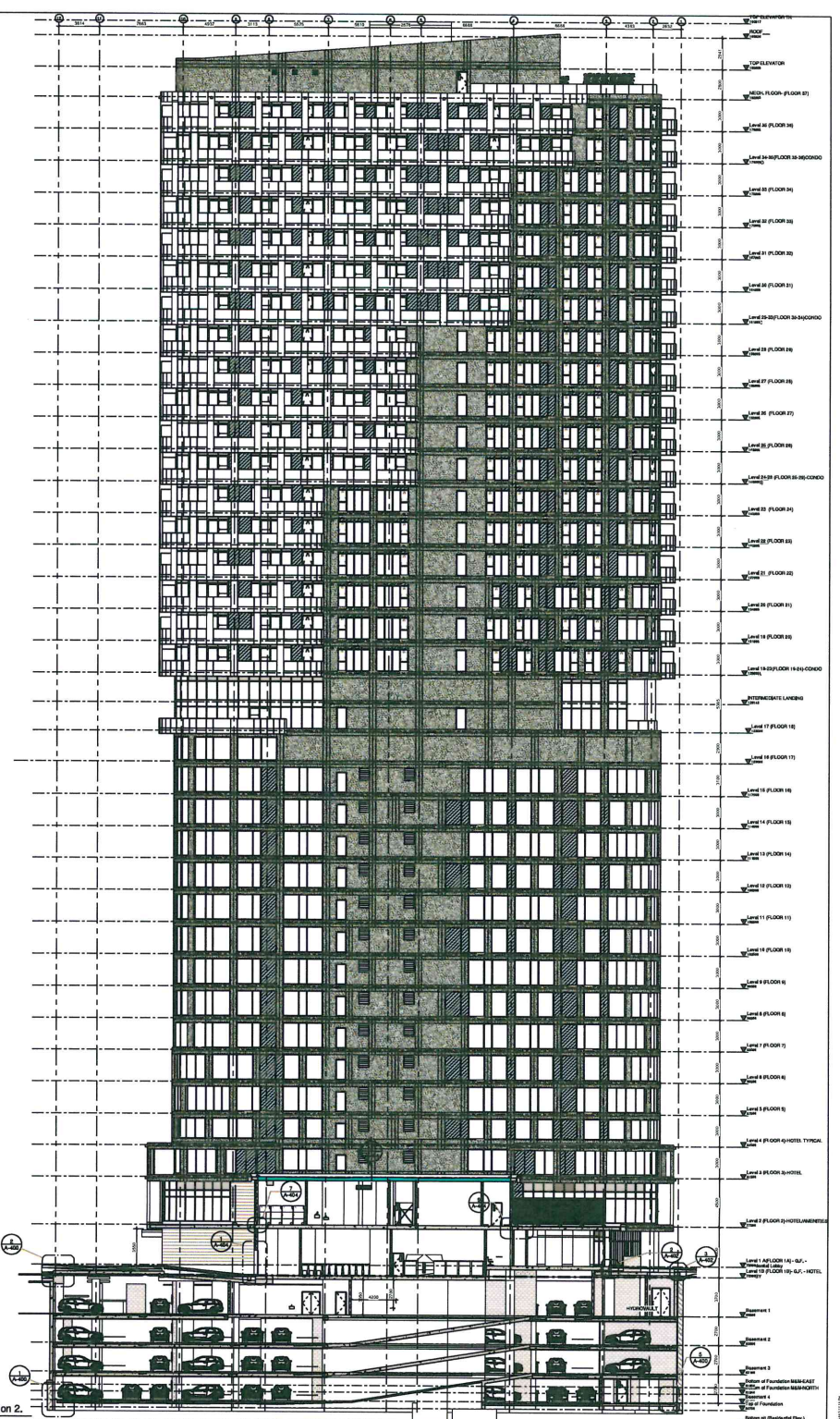
DESIGN: E.A. APPROVED: E.A. DATE: 10/2018 DWG: A-210

DWG # 18821



TOP ELEVATOR 16
 TOP ELEVATOR
 MECH. FLOOR (FLOOR 8)
 Level 16 (FLOOR 16)
 Level 15 (FLOOR 15)
 Level 14 (FLOOR 14)
 Level 13 (FLOOR 13)
 Level 12 (FLOOR 12)
 Level 11 (FLOOR 11)
 Level 10 (FLOOR 10)
 Level 9 (FLOOR 9)
 Level 8 (FLOOR 8)
 Level 7 (FLOOR 7)
 Level 6 (FLOOR 6)
 Level 5 (FLOOR 5)
 Level 4 (FLOOR 4)
 Level 3 (FLOOR 3)
 Level 2 (FLOOR 2)
 Level 1 (FLOOR 1)
 Level 0 (FLOOR 0)
 Level -1 (FLOOR -1)
 Level -2 (FLOOR -2)
 Level -3 (FLOOR -3)
 Level -4 (FLOOR -4)
 Level -5 (FLOOR -5)
 Level -6 (FLOOR -6)
 Level -7 (FLOOR -7)
 Level -8 (FLOOR -8)
 Level -9 (FLOOR -9)
 Level -10 (FLOOR -10)
 Level -11 (FLOOR -11)
 Level -12 (FLOOR -12)
 Level -13 (FLOOR -13)
 Level -14 (FLOOR -14)
 Level -15 (FLOOR -15)
 Level -16 (FLOOR -16)
 Level -17 (FLOOR -17)
 Level -18 (FLOOR -18)
 Level -19 (FLOOR -19)
 Level -20 (FLOOR -20)
 Level -21 (FLOOR -21)
 Level -22 (FLOOR -22)
 Level -23 (FLOOR -23)
 Level -24 (FLOOR -24)
 Level -25 (FLOOR -25)
 Level -26 (FLOOR -26)
 Level -27 (FLOOR -27)
 Level -28 (FLOOR -28)
 Level -29 (FLOOR -29)
 Level -30 (FLOOR -30)
 Level -31 (FLOOR -31)
 Level -32 (FLOOR -32)
 Level -33 (FLOOR -33)
 Level -34 (FLOOR -34)
 Level -35 (FLOOR -35)
 Level -36 (FLOOR -36)
 Level -37 (FLOOR -37)
 Level -38 (FLOOR -38)
 Level -39 (FLOOR -39)
 Level -40 (FLOOR -40)
 Level -41 (FLOOR -41)
 Level -42 (FLOOR -42)
 Level -43 (FLOOR -43)
 Level -44 (FLOOR -44)
 Level -45 (FLOOR -45)
 Level -46 (FLOOR -46)
 Level -47 (FLOOR -47)
 Level -48 (FLOOR -48)
 Level -49 (FLOOR -49)
 Level -50 (FLOOR -50)
 Level -51 (FLOOR -51)
 Level -52 (FLOOR -52)
 Level -53 (FLOOR -53)
 Level -54 (FLOOR -54)
 Level -55 (FLOOR -55)
 Level -56 (FLOOR -56)
 Level -57 (FLOOR -57)
 Level -58 (FLOOR -58)
 Level -59 (FLOOR -59)
 Level -60 (FLOOR -60)
 Level -61 (FLOOR -61)
 Level -62 (FLOOR -62)
 Level -63 (FLOOR -63)
 Level -64 (FLOOR -64)
 Level -65 (FLOOR -65)
 Level -66 (FLOOR -66)
 Level -67 (FLOOR -67)
 Level -68 (FLOOR -68)
 Level -69 (FLOOR -69)
 Level -70 (FLOOR -70)
 Level -71 (FLOOR -71)
 Level -72 (FLOOR -72)
 Level -73 (FLOOR -73)
 Level -74 (FLOOR -74)
 Level -75 (FLOOR -75)
 Level -76 (FLOOR -76)
 Level -77 (FLOOR -77)
 Level -78 (FLOOR -78)
 Level -79 (FLOOR -79)
 Level -80 (FLOOR -80)
 Level -81 (FLOOR -81)
 Level -82 (FLOOR -82)
 Level -83 (FLOOR -83)
 Level -84 (FLOOR -84)
 Level -85 (FLOOR -85)
 Level -86 (FLOOR -86)
 Level -87 (FLOOR -87)
 Level -88 (FLOOR -88)
 Level -89 (FLOOR -89)
 Level -90 (FLOOR -90)
 Level -91 (FLOOR -91)
 Level -92 (FLOOR -92)
 Level -93 (FLOOR -93)
 Level -94 (FLOOR -94)
 Level -95 (FLOOR -95)
 Level -96 (FLOOR -96)
 Level -97 (FLOOR -97)
 Level -98 (FLOOR -98)
 Level -99 (FLOOR -99)
 Level -100 (FLOOR -100)

Section 1
1:150



TOP ELEVATOR
 MECH. FLOOR (FLOOR 8)
 Level 16 (FLOOR 16)
 Level 15 (FLOOR 15)
 Level 14 (FLOOR 14)
 Level 13 (FLOOR 13)
 Level 12 (FLOOR 12)
 Level 11 (FLOOR 11)
 Level 10 (FLOOR 10)
 Level 9 (FLOOR 9)
 Level 8 (FLOOR 8)
 Level 7 (FLOOR 7)
 Level 6 (FLOOR 6)
 Level 5 (FLOOR 5)
 Level 4 (FLOOR 4)
 Level 3 (FLOOR 3)
 Level 2 (FLOOR 2)
 Level 1 (FLOOR 1)
 Level 0 (FLOOR 0)
 Level -1 (FLOOR -1)
 Level -2 (FLOOR -2)
 Level -3 (FLOOR -3)
 Level -4 (FLOOR -4)
 Level -5 (FLOOR -5)
 Level -6 (FLOOR -6)
 Level -7 (FLOOR -7)
 Level -8 (FLOOR -8)
 Level -9 (FLOOR -9)
 Level -10 (FLOOR -10)
 Level -11 (FLOOR -11)
 Level -12 (FLOOR -12)
 Level -13 (FLOOR -13)
 Level -14 (FLOOR -14)
 Level -15 (FLOOR -15)
 Level -16 (FLOOR -16)
 Level -17 (FLOOR -17)
 Level -18 (FLOOR -18)
 Level -19 (FLOOR -19)
 Level -20 (FLOOR -20)
 Level -21 (FLOOR -21)
 Level -22 (FLOOR -22)
 Level -23 (FLOOR -23)
 Level -24 (FLOOR -24)
 Level -25 (FLOOR -25)
 Level -26 (FLOOR -26)
 Level -27 (FLOOR -27)
 Level -28 (FLOOR -28)
 Level -29 (FLOOR -29)
 Level -30 (FLOOR -30)
 Level -31 (FLOOR -31)
 Level -32 (FLOOR -32)
 Level -33 (FLOOR -33)
 Level -34 (FLOOR -34)
 Level -35 (FLOOR -35)
 Level -36 (FLOOR -36)
 Level -37 (FLOOR -37)
 Level -38 (FLOOR -38)
 Level -39 (FLOOR -39)
 Level -40 (FLOOR -40)
 Level -41 (FLOOR -41)
 Level -42 (FLOOR -42)
 Level -43 (FLOOR -43)
 Level -44 (FLOOR -44)
 Level -45 (FLOOR -45)
 Level -46 (FLOOR -46)
 Level -47 (FLOOR -47)
 Level -48 (FLOOR -48)
 Level -49 (FLOOR -49)
 Level -50 (FLOOR -50)
 Level -51 (FLOOR -51)
 Level -52 (FLOOR -52)
 Level -53 (FLOOR -53)
 Level -54 (FLOOR -54)
 Level -55 (FLOOR -55)
 Level -56 (FLOOR -56)
 Level -57 (FLOOR -57)
 Level -58 (FLOOR -58)
 Level -59 (FLOOR -59)
 Level -60 (FLOOR -60)
 Level -61 (FLOOR -61)
 Level -62 (FLOOR -62)
 Level -63 (FLOOR -63)
 Level -64 (FLOOR -64)
 Level -65 (FLOOR -65)
 Level -66 (FLOOR -66)
 Level -67 (FLOOR -67)
 Level -68 (FLOOR -68)
 Level -69 (FLOOR -69)
 Level -70 (FLOOR -70)
 Level -71 (FLOOR -71)
 Level -72 (FLOOR -72)
 Level -73 (FLOOR -73)
 Level -74 (FLOOR -74)
 Level -75 (FLOOR -75)
 Level -76 (FLOOR -76)
 Level -77 (FLOOR -77)
 Level -78 (FLOOR -78)
 Level -79 (FLOOR -79)
 Level -80 (FLOOR -80)
 Level -81 (FLOOR -81)
 Level -82 (FLOOR -82)
 Level -83 (FLOOR -83)
 Level -84 (FLOOR -84)
 Level -85 (FLOOR -85)
 Level -86 (FLOOR -86)
 Level -87 (FLOOR -87)
 Level -88 (FLOOR -88)
 Level -89 (FLOOR -89)
 Level -90 (FLOOR -90)
 Level -91 (FLOOR -91)
 Level -92 (FLOOR -92)
 Level -93 (FLOOR -93)
 Level -94 (FLOOR -94)
 Level -95 (FLOOR -95)
 Level -96 (FLOOR -96)
 Level -97 (FLOOR -97)
 Level -98 (FLOOR -98)
 Level -99 (FLOOR -99)
 Level -100 (FLOOR -100)

Section 2
1:150

geigerhu
 101 Lee Street, Suite 100, Atlanta, GA 30308
 Tel: 404.525.1000 Fax: 404.525.1001
 www.geigerhu.com
 geigerhu.com
 GENERAL NOTES:
 Do not scale directly from the drawings.
 All dimensions and general conditions shall be verified in the field at any time during construction.
 Do not proceed in case of contradiction.
 This drawing should be read together with the working specifications and general notes.
 OFFICIAL ASSOCIATION
 RIMAP CONSTRUCTION
 RIMAP DEVELOPMENT
 HAGER DESIGN International INC.
 395, Slater St., Ottawa
 395, Slater St., Ottawa
 Design Title
 SECTIONS
 Date: 1/18/10 Designed by: S.K.
 Date: 1/18/10 approved by: S.K.
 Date: 1/18/10 DWG # 18024 A-300
 DWG # 18024