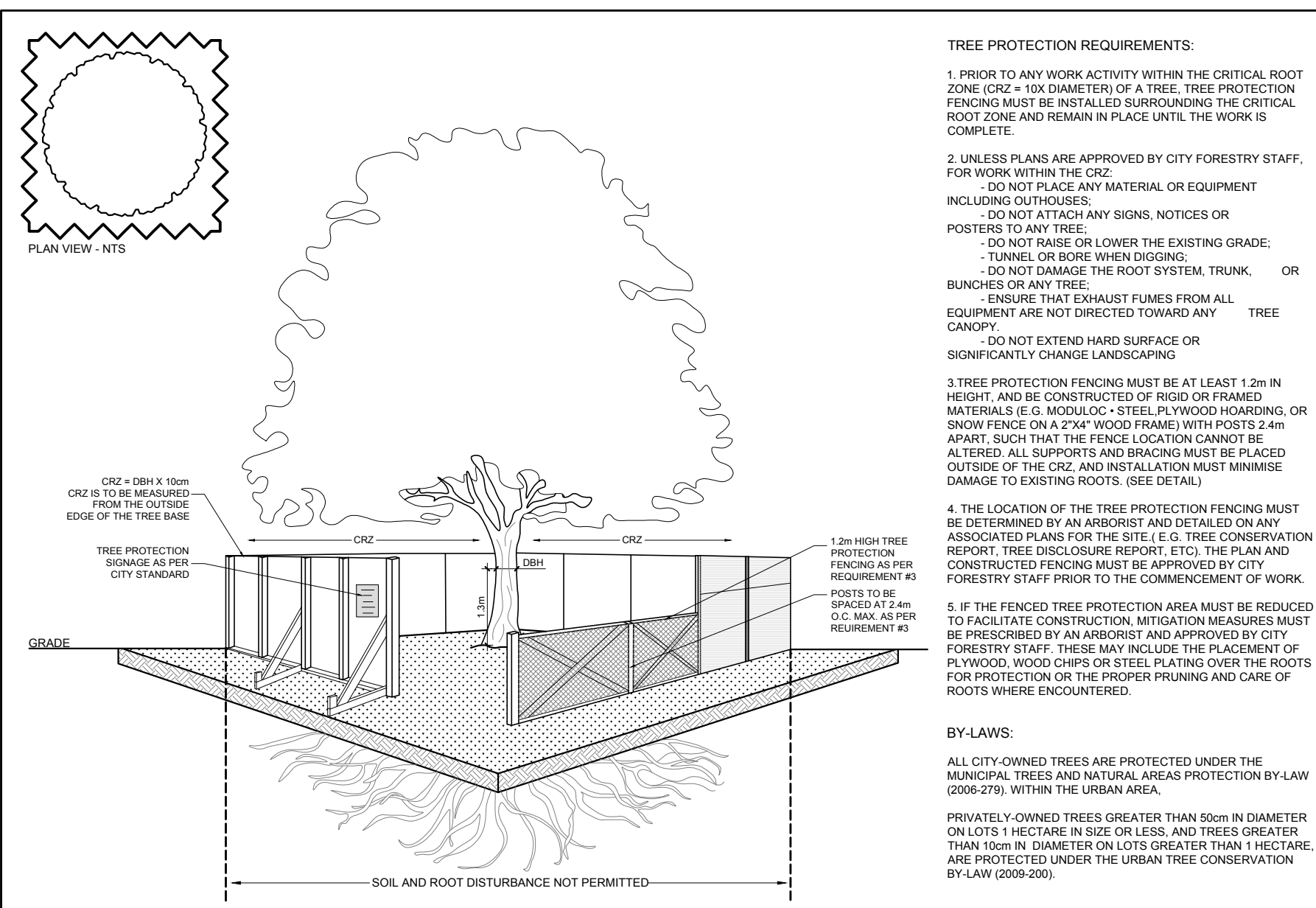
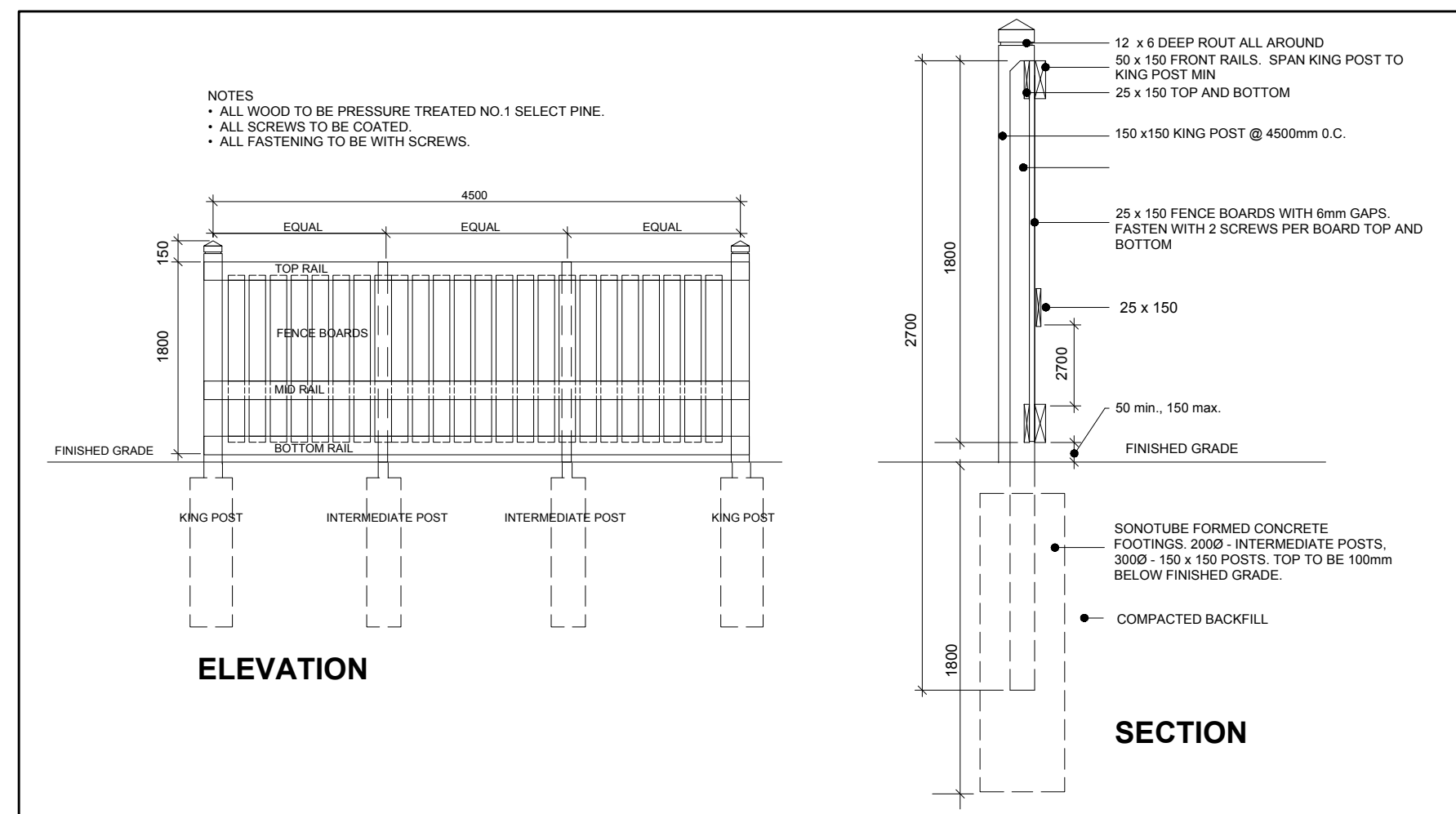


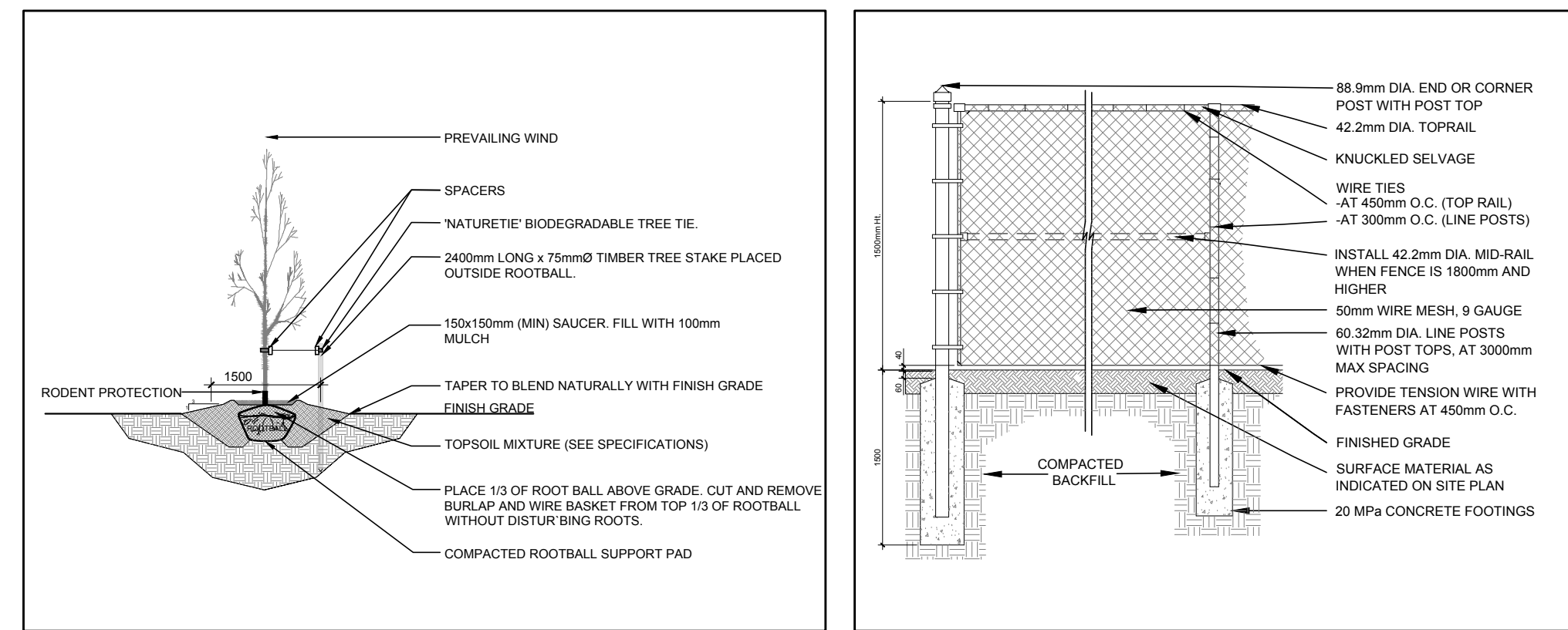
1 TREE CONSERVATION REPORT & LANDSCAPE PLAN- NORTH END OF SITE
SCALE: 1:100



2 TREE PROTECTION FENCE
SCALE: NTS



3 1.8m HT. PRIVACY SCREEN
SCALE: NTS



4 DECIDUOUS TREE PLANTING
SCALE: NTS

5 1.5m HT. CHAIN LINK FENCE
SCALE: NTS

GENERAL NOTES:

- It is the responsibility of the appropriate contractor or official to report any errors, omissions or discrepancies on this plan with actual site conditions to the Landscape Architect before proceeding with construction.
- The contractor is to notify all utility companies and authorities prior to any excavation and ascertain locations of underground services.
- The contractor is to reinstate all areas and items damaged as a result of construction activity.
- The contractor is to comply with all pertinent codes and by-laws.
- The contractor is to maintain a positive surface run-off throughout the entire construction period.
- The Landscape Architect is not responsible for subsurface conditions.
- The contractor is to identify all existing trees to remain on site with the Landscape Architect prior to construction.
- The contractor is to stake the proposed location of all plant material in conjunction with the Landscape Architect prior to excavation.
- Minimum distances for selected deciduous trees are as follows:
 - Building Foundations 7.5m
 - Sidewalks 1.5m
 - Public Streets 2.5m
 - Underground Infrastructure 2.0m
- All trees within 1m of underground utility trenches are to be excavated by hand.
- Remove all protective wrapping from tree trunks after installation.
- Staking of trees shall only be performed if necessary.
- Ensure that mulch is pulled back a min. distance of 75mm from base of tree trunk.

KEY	QTY	BOTANICAL NAME	COMMON NAME	SIZE	CONDITION	REMARKS	OWNERSHIP
EXISTING TREE LIST							
TREES							
AN	2	<i>Acer negundo</i>	Manitoba Maple	200-500mm dbh	Fair	To be removed	330 & 340 McLeod St
AS	1	<i>Acer saccharum</i>	Sugar Maple	800mm dbh	Good	To remain	City of Ottawa
GT	1	<i>Gleditsia triacanthos</i>	Honey Locust	250mm dbh	Fair	To remain	328 McLeod Street
HL	1	<i>Gleditsia triacanthos</i>	Honey Locust	480mm dbh	Fair	To remain	City of Ottawa
MM	1	<i>Acer negundo</i>	Manitoba Maple	300mm dbh	Fair	To be removed	330 McLeod Street
PG	1	<i>Picea glauca</i>	White Spruce	250mm dbh	Good	To remain	328 McLeod Street

KEY	QTY	BOTANICAL NAME	COMMON NAME	SIZE	CONDITION	Remarks
PROPOSED PLANT LIST						
DECIDUOUS TREES						
JL	1	<i>Syringa reticulata</i>	Japanese Tree Lilac	60mm cal.	B&B	Single Leader

CLIENT

SMART LIVING PROPERTIES

226 Argyle Ave, Ottawa, ON K2P 1B9

CONSULTANTS

ARCHITECTS:

WOODMAN ARCHITECT ASSOCIATES LTD.

4 BEECHWOOD, SUITE 201, OTTAWA, ONTARIO, CANADA K1L 8L9
TEL: 613 228 9850 • FAX: 613 228 9886 • email@woodmanarchitect.com

CIVIL ENGINEERS:

McINTOSH PERRY

- LEGEND
- EXISTING TREE TO REMAIN
 - EXISTING TREE TO BE REMOVED
 - PROPOSED DECIDUOUS TREE
 - PROPOSED SOD
 - PROPOSED RIVERSTONE MULCH
 - PROPOSED PRECAST CONCRETE PAVERS
 - PROPOSED TREE PROTECTION FENCE
 - PROPOSED 1.8m HT. PRIVACY SCREEN
 - PROPOSED 1.5m HT. CHAIN LINK FENCE
 - PROPERTY LINE
 - PROPOSED LANDSCAPE LIGHTING

No.	Issue	Date	DR	CK
5	REVISED PER CITY COMMENTS	12/13/2022	ML	JL
4	REVISED PER CITY COMMENTS	07/25/2022	ML	JL
3	REVISED PER FOTENN COMMENTS	06/29/2022	WF	JL
2	REVISED PER CITY COMMENTS	06/14/2022	ML	JL
1	ISSUED FOR DISCUSSION & REVIEW	10/05/2021	ML	JL

JAMES B. LENNOX & ASSOCIATES INC. LANDSCAPE ARCHITECTS

3332 CARLING AVE. OTTAWA, ONTARIO K2H 5A8
Tel. (613) 722-5168 Fax. (613) 343-3942

PROJECT

PROPOSED FOUR STOREY ADDITION
330 McLEOD STREET, OTTAWA ON

DRAWING

TREE CONSERVATION REPORT & LANDSCAPE PLAN

STAMP	SCALE
	AS SHOWN
	START DATE
	AUGUST 2021
PROJECT NORTH	PROJECT NO.
	21SM12109
DRAWING NO.	SCALE
	L.1

PLOT SIZE ARCH-D

D07-12-21-0172