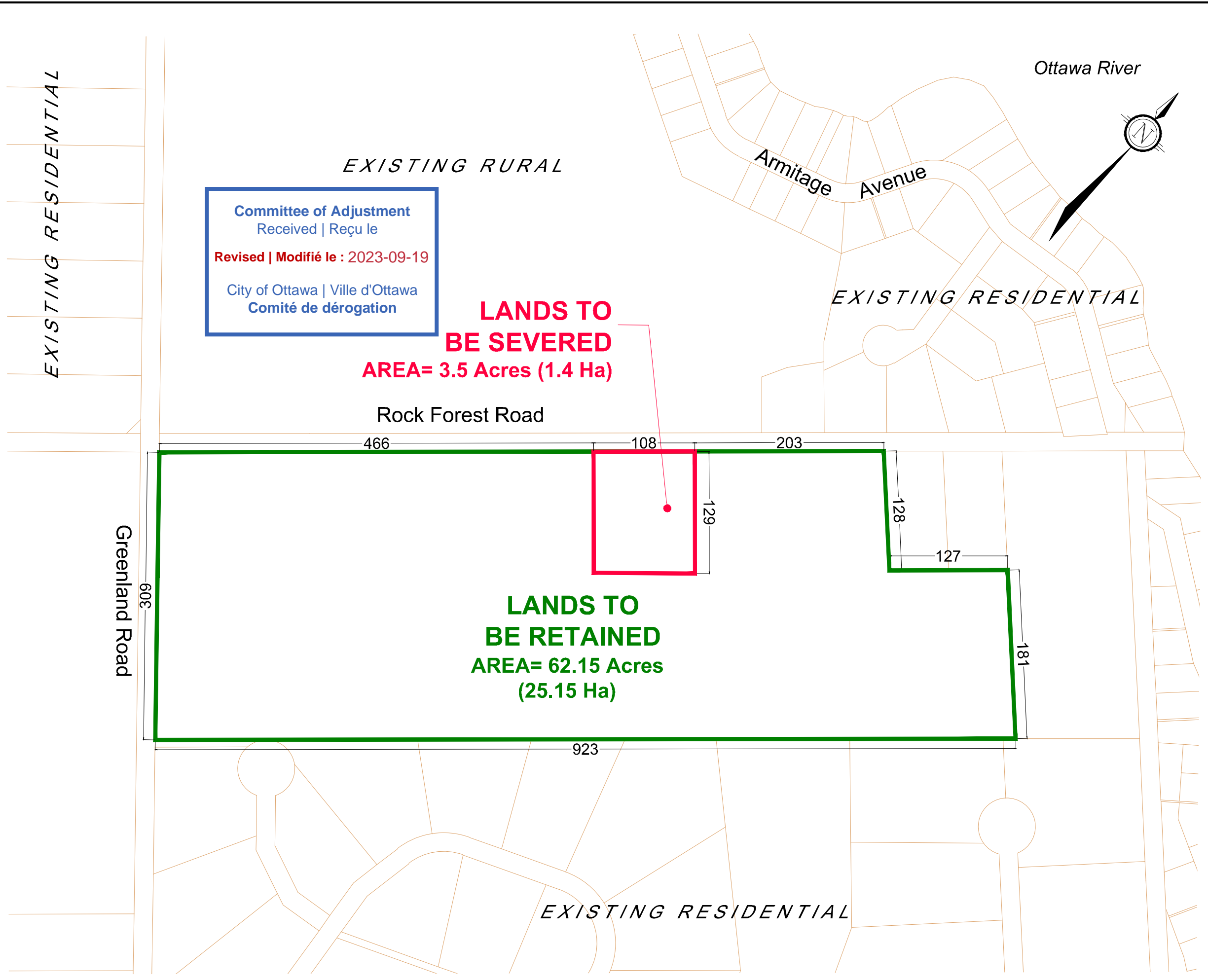


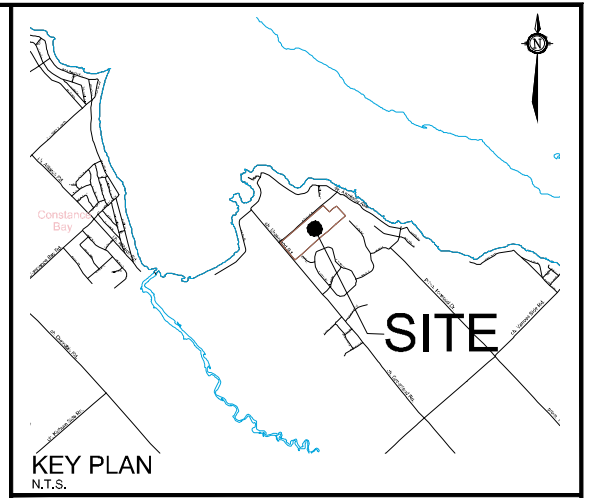
M:\2021\121235\CAD\Planning\Figures\121235-SEV.dwg, SEV1, Jun 01, 2023 - 1:23pm, wsfloss



Committee of Adjustment  
Received | Reçu le  
**Revised | Modifié le : 2023-09-19**  
City of Ottawa | Ville d'Ottawa  
Comité de dérogation

**LANDS TO BE SEVERED**  
**AREA= 3.5 Acres (1.4 Ha)**

**LANDS TO BE RETAINED**  
**AREA= 62.15 Acres (25.15 Ha)**



# SEVERANCE APPLICATION #1

## 3 ROCK FOREST ROAD

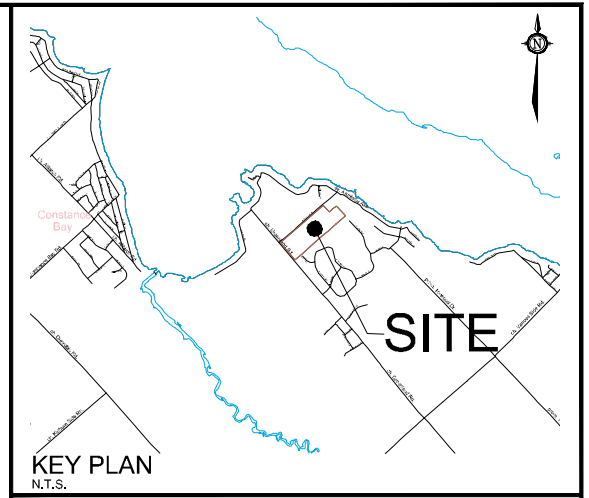
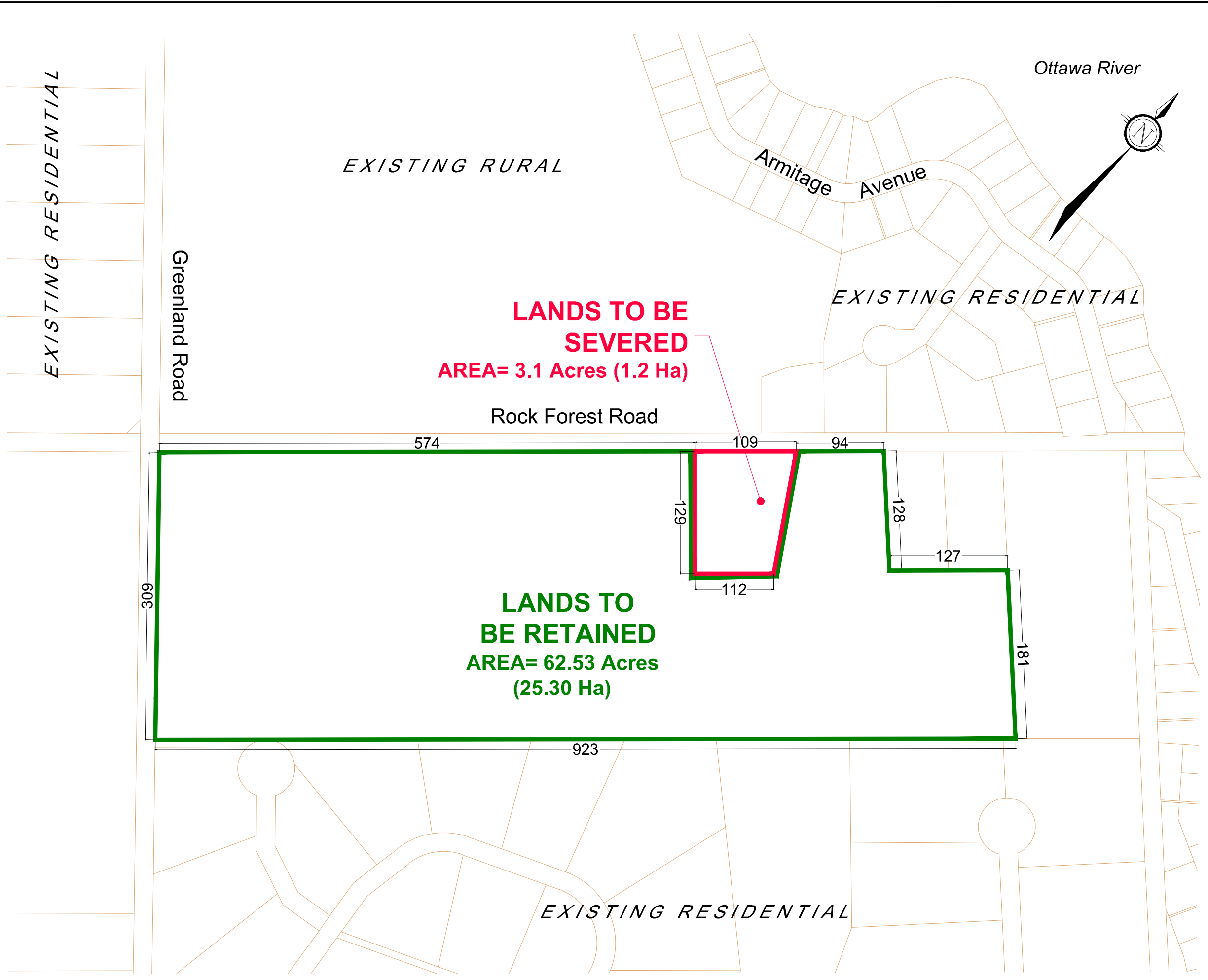
PART OF LOTS 10 & 11  
CONCESSION 6  
CITY OF OTTAWA

1 : 4000

No.	REVISION	DATE	BY
1.	ISSUED FOR SEVERANCE APPLICATION	MAY 05/23	RP

 Engineers, Planners & Landscape Architects Suite 200, 240 Michael Cowpland Drive Ottawa, Ontario, Canada K2M 1P6 Telephone (613) 254-9643 Facsimile (613) 254-5857 Website www.nowatech-eng.com	ISSUED	JUNE, 2023
	PROJECT No.	121235
	DRAWING No.	121235-SEV

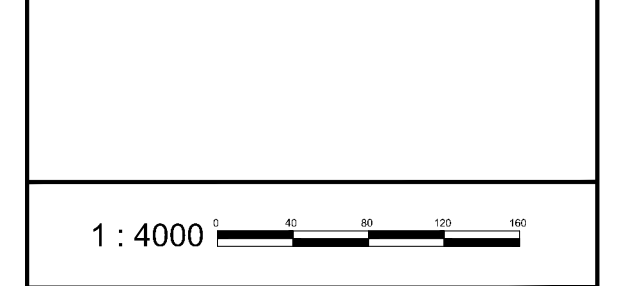
M:\2021\121235\CAD\Planning\Figures\121235-SEV.dwg, SEV2, Jun 01, 2023 - 1:23pm, wsfloss



# SEVERANCE APPLICATION #2

## 3 ROCK FOREST ROAD

PART OF LOTS 10 & 11  
CONCESSION 6  
CITY OF OTTAWA



No.	REVISION	DATE	BY
1.	ISSUED FOR SEVERANCE APPLICATION	MAY 05/23	RP

**NOVATECH**  
Engineers, Planners & Landscape Architects  
Suite 200, 240 Michael Cowpland Drive  
Ottawa, Ontario, Canada K2M 1P6  
Telephone (613) 254-9643  
Facsimile (613) 254-5857  
Website www.novatech-eng.com

ISSUED	JUNE, 2023
PROJECT No.	121235
DRAWING No.	121235-SEV