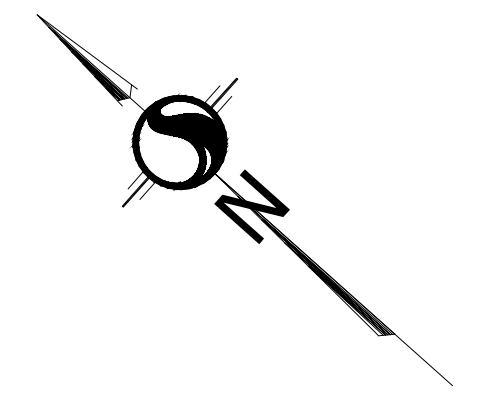


10 October 2023 4:53 PM



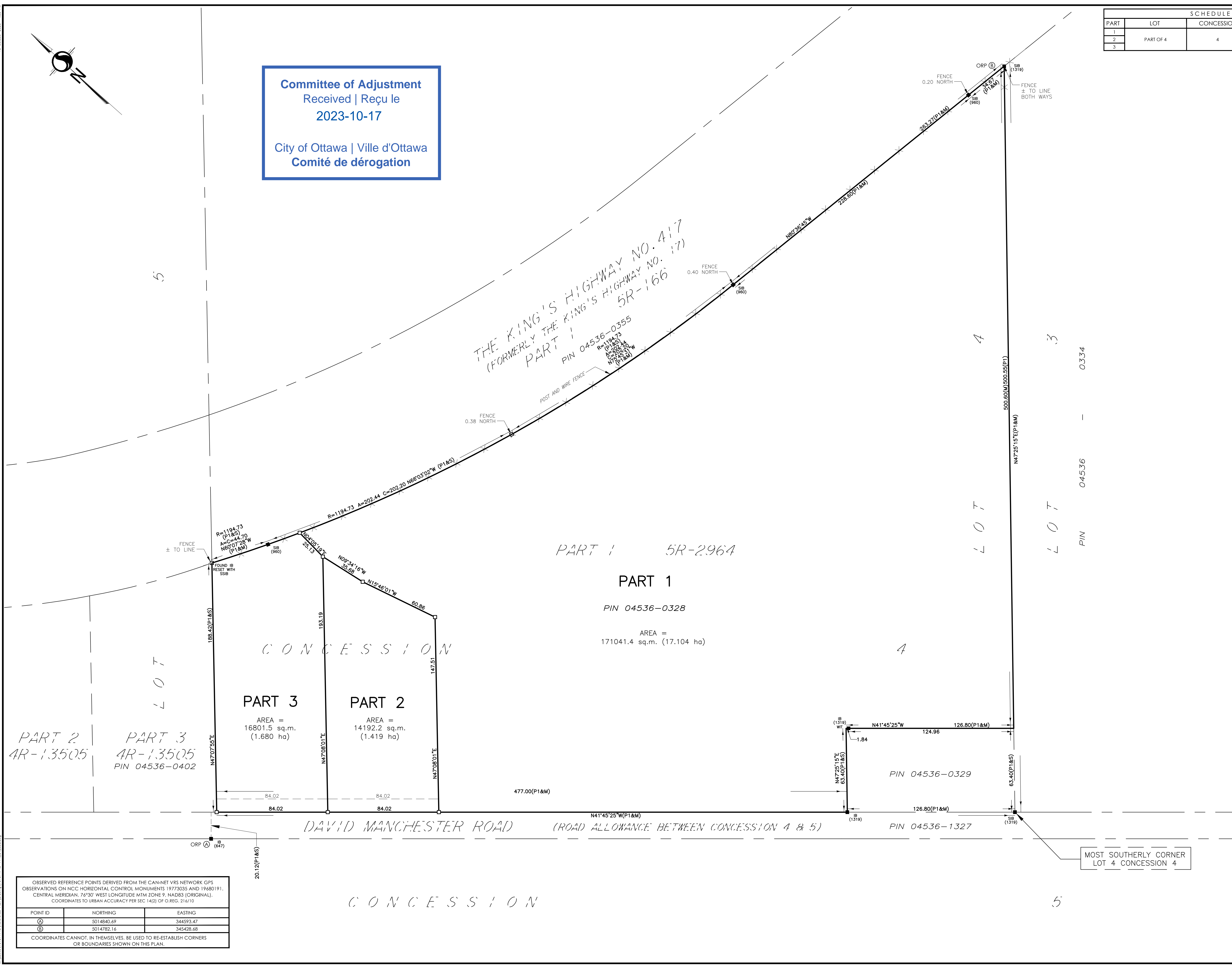
Committee of Adjustment
Received | Reçu le
2023-10-17
City of Ottawa | Ville d'Ottawa
Comité de dérogation

| SCHEDULE | | | |
|----------|-----------|------------|----------------|
| PART | LOT | CONCESSION | PIN |
| 1 | | | |
| 2 | PART OF 4 | 4 | PIN 04536-0328 |
| 3 | | | |

PLAN OF SURVEY OF
**PART OF LOT 4
CONCESSION 4**
(GEOGRAPHIC TOWNSHIP OF HUNTLEY)
(FORMERLY TOWNSHIP OF WEST CARLETON)
CITY OF OTTAWA
Scale 1:1250
Stantec Geomatics Ltd.
THE INTENDED PLOT SIZE OF THIS PLAN IS 914.4mm IN WIDTH BY 609.6mm IN HEIGHT
WHEN PLOTTED AT A SCALE OF 1:1250.
METRIC CONVERSION
DISTANCES AND COORDINATES SHOWN ON THIS PLAN ARE IN METRES
AND CAN BE CONVERTED TO FEET BY DIVIDING BY 0.3048
GRID SCALE CONVERSION
DISTANCES ARE GROUND AND CAN BE CONVERTED TO GRID BY MULTIPLYING BY THE
COMBINED SCALE FACTOR OF 0.99999.
BEARING NOTE
BEARINGS ARE GRID. DERIVED FROM THE CAN-NET VRS NETWORK OBSERVATIONS
ON NCC HORIZONTAL CONTROL MONUMENTS 19773035 AND 19680191. CENTRAL
MERIDIAN. 76°30' WEST LONGITUDE MTM ZONE 9. NAD83 (ORIGINAL).
19773035 N:5004040.42 E:324888.04
19680191 N:5033564.26 E:388064.94
FOR BEARING COMPARISONS, A ROTATION OF 0° 20' 46" COUNTER-CLOCKWISE HAS
BEEN APPLIED TO BEARINGS ON PLAN P1.

LEGEND

| | | |
|--------|---------|--------------------------------|
| ■ | DENOTES | FOUND MONUMENTS |
| □ | | SET MONUMENTS |
| IB | | IRON BAR |
| IB# | | ROUND IRON BAR |
| SIB | | STANDARD IRON BAR |
| SSIB | | SHORT STANDARD IRON BAR |
| CC | | CUT CROSS |
| CP | | CONCRETE PIN |
| WIT | | WITNESS |
| PIN | | PROPERTY IDENTIFICATION NUMBER |
| M/MEAS | | MEASURED |
| PROP | | PROPORTIONED |
| QU | | ORIGIN UNKNOWN |
| SG | | STANTEC GEOMATICS LTD. |
| P1 | | PLAN SR-2964 |



PART 2
4R-13505

PART 3
4R-13505
PIN 04536-0402

PART 3
AREA =
16801.5 sq.m.
(1.680 ha)

PART 2
AREA =
14192.2 sq.m.
(1.419 ha)

PART 1
5R-2964
PIN 04536-0328
AREA =
171041.4 sq.m. (17.104 ha)

OBSERVED REFERENCE POINTS DERIVED FROM THE CAN-NET VRS NETWORK GPS
OBSERVATIONS ON NCC HORIZONTAL CONTROL MONUMENTS 19773035 AND 19680191.
CENTRAL MERIDIAN, 76°30' WEST LONGITUDE MTM ZONE 9. NAD83 (ORIGINAL).
COORDINATES TO URBAN ACCURACY PER SEC 14(2) OF O.REG. 216/10

| POINT ID | NORTHING | EASTING |
|----------|------------|-----------|
| Ⓐ | 5014840.69 | 344593.47 |
| Ⓑ | 5014782.16 | 345428.68 |

COORDINATES CANNOT, IN THEMSELVES, BE USED TO RE-ESTABLISH CORNERS
OR BOUNDARIES SHOWN ON THIS PLAN.

SURVEYOR'S CERTIFICATE
I CERTIFY THAT:
1. THIS SURVEY AND PLAN ARE CORRECT AND IN ACCORDANCE WITH THE SURVEYS
ACT, THE SURVEYORS ACT AND THE LAND TITLES ACT AND THE REGULATIONS MADE
UNDER THEM.
2. THE SURVEY WAS COMPLETED ON THE XX DAY OF SEPTEMBER, 2023.

DATE _____ FRANCIS LAU
ONTARIO LAND SURVEYOR
THIS PLAN OF SURVEY RELATES TO AOLS PLAN SUBMISSION FORM NUMBER V-50371.

Stantec Geomatics Ltd.
CANADA LANDS SURVEYORS
ONTARIO LAND SURVEYORS
1331 CLYDE AVENUE, SUITE 300
OTTAWA, ONTARIO, K2C 3G4
TEL: 613.722.4420
stantec.com

DRAWN: ZF CHECKED: CK PM: FL FIELD: CA PROJECT NO.: 161614746-114



Proposed Lot 1

Proposed Lot 2

aut./Hwy. 417

aut./Hwy. 417

506

Chester Rd.

84.0m

216.4m

250.2m

84.0m

394.1m

402.2m

300.2m

300.1m

Retained

RU

Committee of Adjustment
Received | Reçu le
2023-10-26
City of Ottawa | Ville d'Ottawa
Comité de dérogation

73.3m

70.5m

183.7m

432