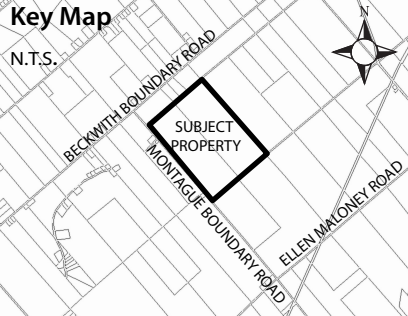


HMH Properties Severance Sketch

2850 Montague Boundary Rd.
Pt. Lot 29 & 30, Concession 9
Geographic Township of
Marlborough
CITY OF OTTAWA



Legend

- Subject Lands
- Provincially Significant Wetlands
- Organic Soils
- Non-Evaluated Wetlands
- NHS Core Area
- Watercourse
- Regulation Limit
- Floodplain

Notes

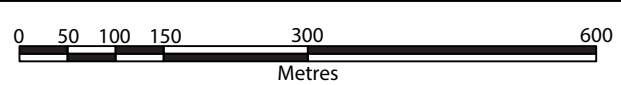
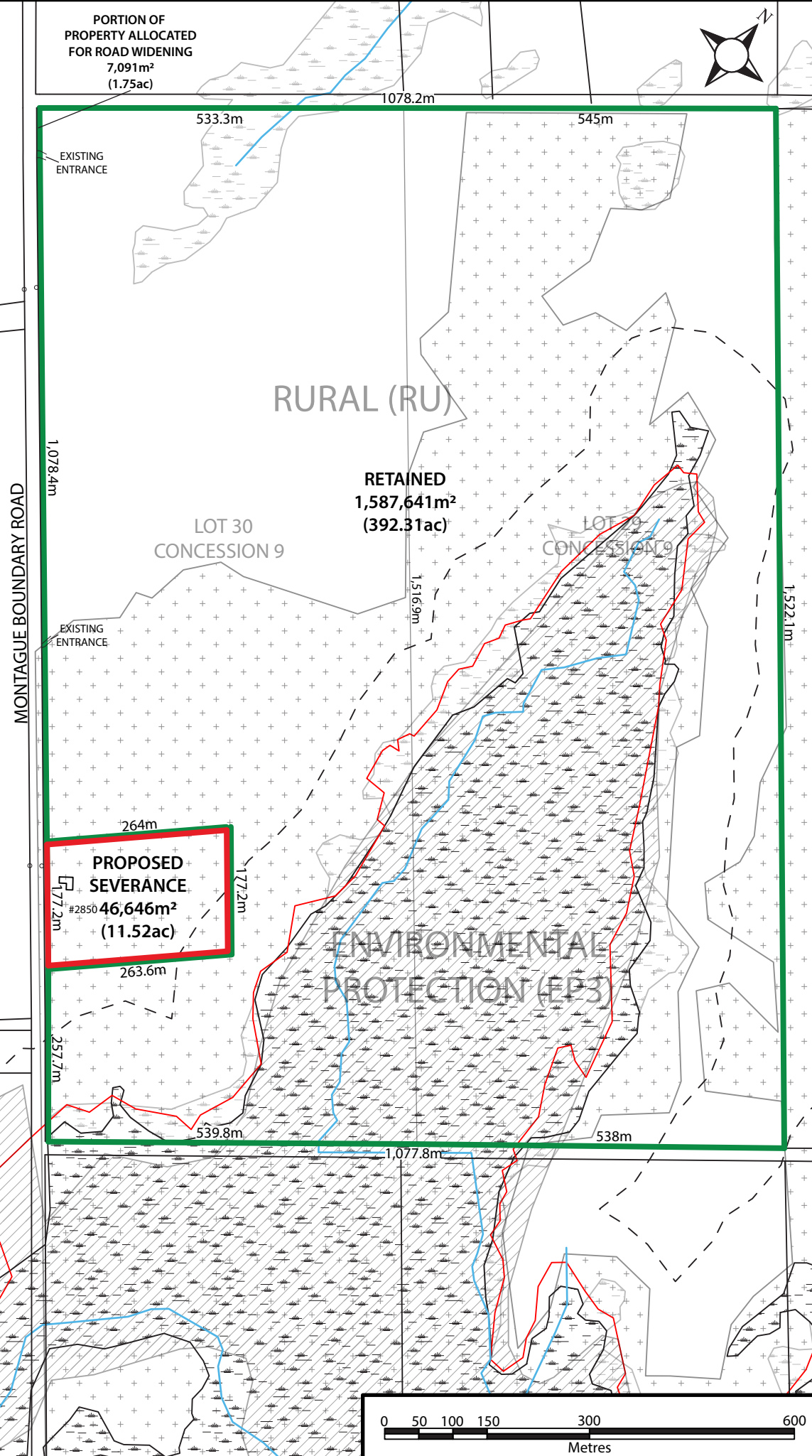
1. Locations of the wetlands, watercourses and Regulation Limit derived from the RVCA Online GIS mapping. Their locations on the sketch are approximate.
2. Location of the organic soils derived from agmaps online GIS mapping.
3. Partial boundary and dimensions for the subject property derived from draft Plan of Survey. All other dimensions are approximate based on GIS mapping.

Version Date: November 03, 2023

File No. 23-118

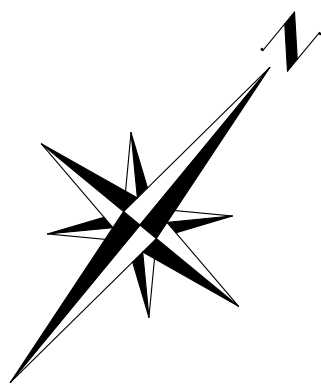
Drawn By: TG

PORTION OF
PROPERTY ALLOCATED
FOR ROAD WIDENING
7,091m²
(1.75ac)



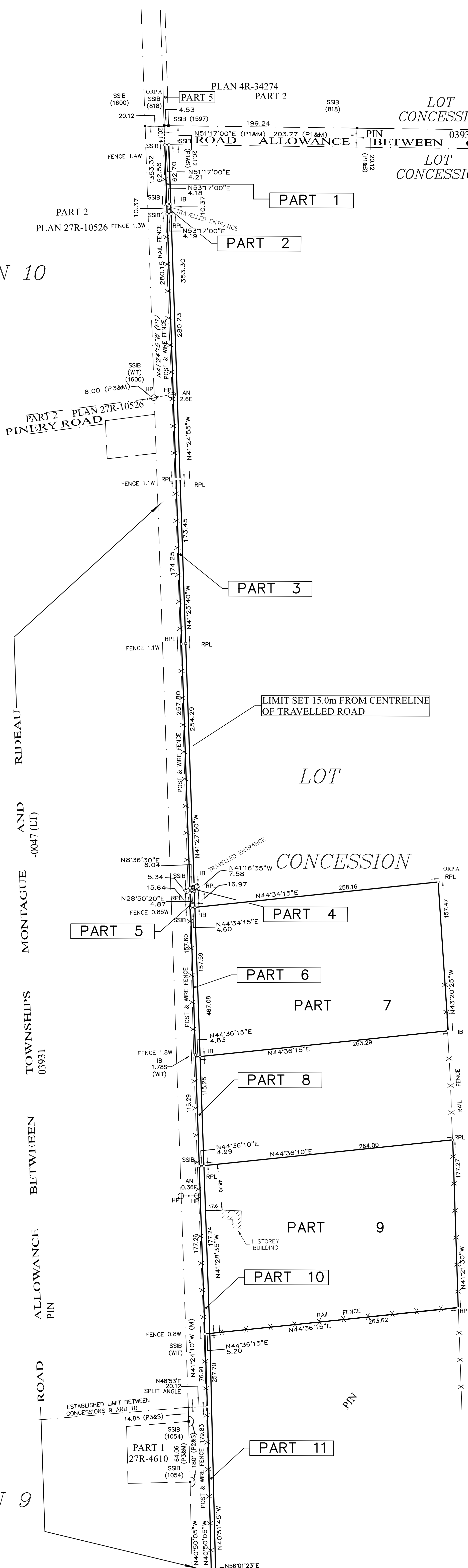
SCHEDULE				
PART	PART OF LOT	CONCESSION	PIN	AREA (ACRES)
1				0.06 ±
2				0.01 ±
3				0.76 ±
4				0.01 ±
5				0.02 ±
6	LOT 30	9	PART OF PIN 03931-0034	0.18 ±
7				10.13 ±
8				0.14 ±
9				11.53 ±
10				0.22 ±
11				0.29 ±

PARTS 1-11 (INCLUSIVE) COMPRISES PART OF PIN 03931-0034 (LT)



LOT 1
CONCESSION 10

GEOGRAPHIC TOWNSHIP OF MONTAGUE
COUNTY OF LANARK



DRAFT

PLAN OF SURVEY
OF PART OF
LOT 30
CONCESSION 9
GEOGRAPHIC TOWNSHIP OF MARLBOROUGH
NOW TOWNSHIP OF RIDEAU
CITY OF OTTAWA
SCALE 1:2000
0 80 120 160 200
THE INTENDED PLOT SIZE OF THIS PLAN IS 610mm IN WIDTH BY 914mm IN HEIGHT
WHEN PLOTTED AT A SCALE OF 1:2000
JAYMAC LAND SURVEYS INC.

METRIC:
DISTANCES AND COORDINATES SHOWN ON THIS PLAN ARE IN METRES
AND CAN CONVERTED TO FEET BY DIVIDING BY 0.3048

NOTES:
BEARINGS ARE MTM GRID, DERIVED FROM OBSERVED REFERENCE POINTS
A & B, MTM ZONE 9, NAD83 (ORIGINAL)
FOR BEARING COMPARISONS, A ROTATION OF 00°22'00" COUNTER-CLOCKWISE
WAS APPLIED TO P2 TO CONVERT TO GRID BEARINGS
DISTANCES ARE GROUND AND CAN BE CONVERTED TO GRID BY MULTIPLYING
BY THE COMBINED SCALE FACTOR OF 0.999905

LEGEND:

■	DENOTES	SURVEY MONUMENT FOUND
□		SURVEY MONUMENT SET
SSIB		SHORT STANDARD IRON BAR
SIB		STANDARD IRON BAR
IB		IRON BAR
RPL		ROCK PLUG
RB		ROCK BAR
WIT		WITNESS
ORP		OBSERVED REFERENCE POINT
M		MEASURED
S		SET
PIN		PROPERTY IDENTIFICATION NUMBER
P1		4R-34274
P2		27R-4610
P3		27R-10526
IP		HYDRO POLE
OH		OVERHEAD WIRES
(818)		JOHN R. HILEY, O.L.S.
(1054)		GEORGE BRACKEN LIMITED
(1600)		G.A. SMITH SURVEYING LTD.
(1597)		H.A. KEN SHIPMAN SURVEYING LTD.

SURVEYOR'S CERTIFICATE:
I CERTIFY THAT:
1. THIS SURVEY AND PLAN ARE CORRECT AND IN ACCORDANCE WITH THE SURVEYS ACT, THE SURVEYORS ACT AND THE LAND TITLES ACT AND THE REGULATIONS MADE UNDER THEM.
2. THE SURVEY WAS COMPLETED ON JULY 19, 2023

DATE _____ J.D. MARTHUR
ONTARIO LAND SURVEYOR

THIS PLAN OF SURVEY RELATES TO AOLS PLAN SUBMISSION FORM NUMBER V-52827

SURVEY BY: JM | CHECKED BY: JM | CLOSURE CHECK: JM
FILE #: 23-4022 OTTAWA | JOB #: 23-4022

OBSERVED REFERENCE POINTS (ORP) DERIVED FROM REAL TIME NETWORK OBSERVATIONS (RTN) AND ARE REFERRED TO MTM ZONE 9, NAD83 (ORIGINAL). COORDINATES TO RURAL ACCURACY PER SECTION 14 (2) OF O. REG. 216/10

POINT ID	NORTHING	EASTING
ORP A	4 992 441.1	348 040.2
ORP B	4 992 008.6	348 771.0

COORDINATES CANNOT, IN THEMSELVES, BE USED TO RE-ESTABLISH CORNERS OR BOUNDARIES SHOWN ON THIS PLAN.

LOT 1
CONCESSION 9

LOT 30
CONCESSION 8

03931 (LT) 30
9