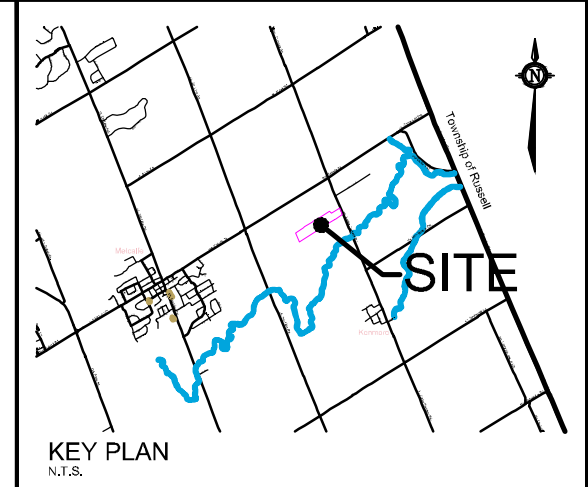


OVERVIEW



KEY PLAN
N.T.S.

CONCEPTUAL SEVERANCE PLAN

2800 YORKS CORNERS ROAD

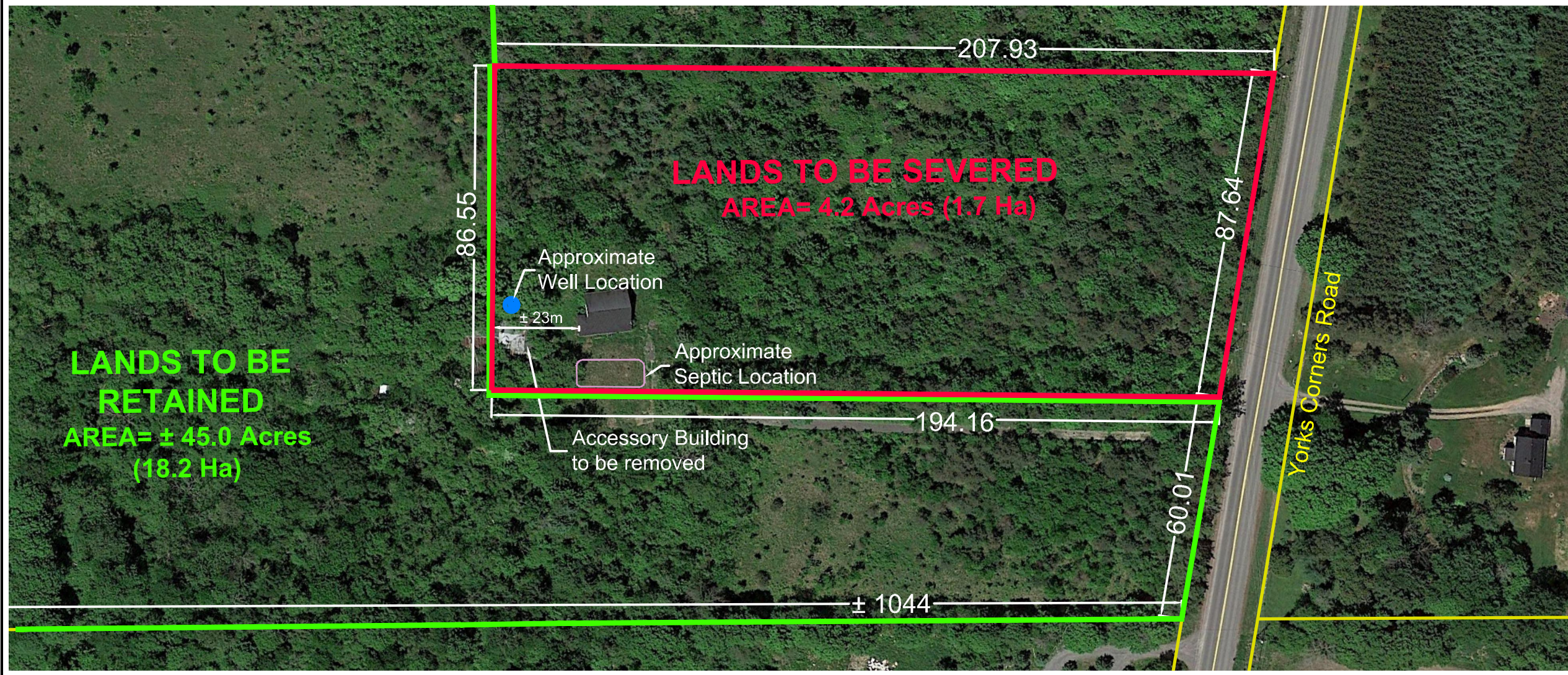
PART LOT 22, CON 9
Geographic Township of OSGOODE
CITY OF OTTAWA

Committee of Adjustment
Received | Reçu le

2023-11-02

City of Ottawa | Ville d'Ottawa
Comité de dérogation

1 : 1250



LANDS TO BE SEVERED
AREA= 4.2 Acres (1.7 Ha)

LANDS TO BE RETAINED
AREA= ± 45.0 Acres (18.2 Ha)

No.	REVISION	DATE	BY
2.	REVISED PER COMMENTS	OCT 26/23	TM
1.	ISSUED FOR DISCUSSION	SEPT 21/22	KC

ISSUED
OCTOBER, 2023




PROJECT No.
122172

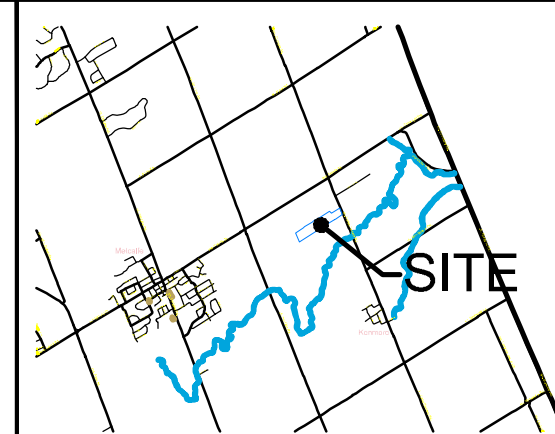
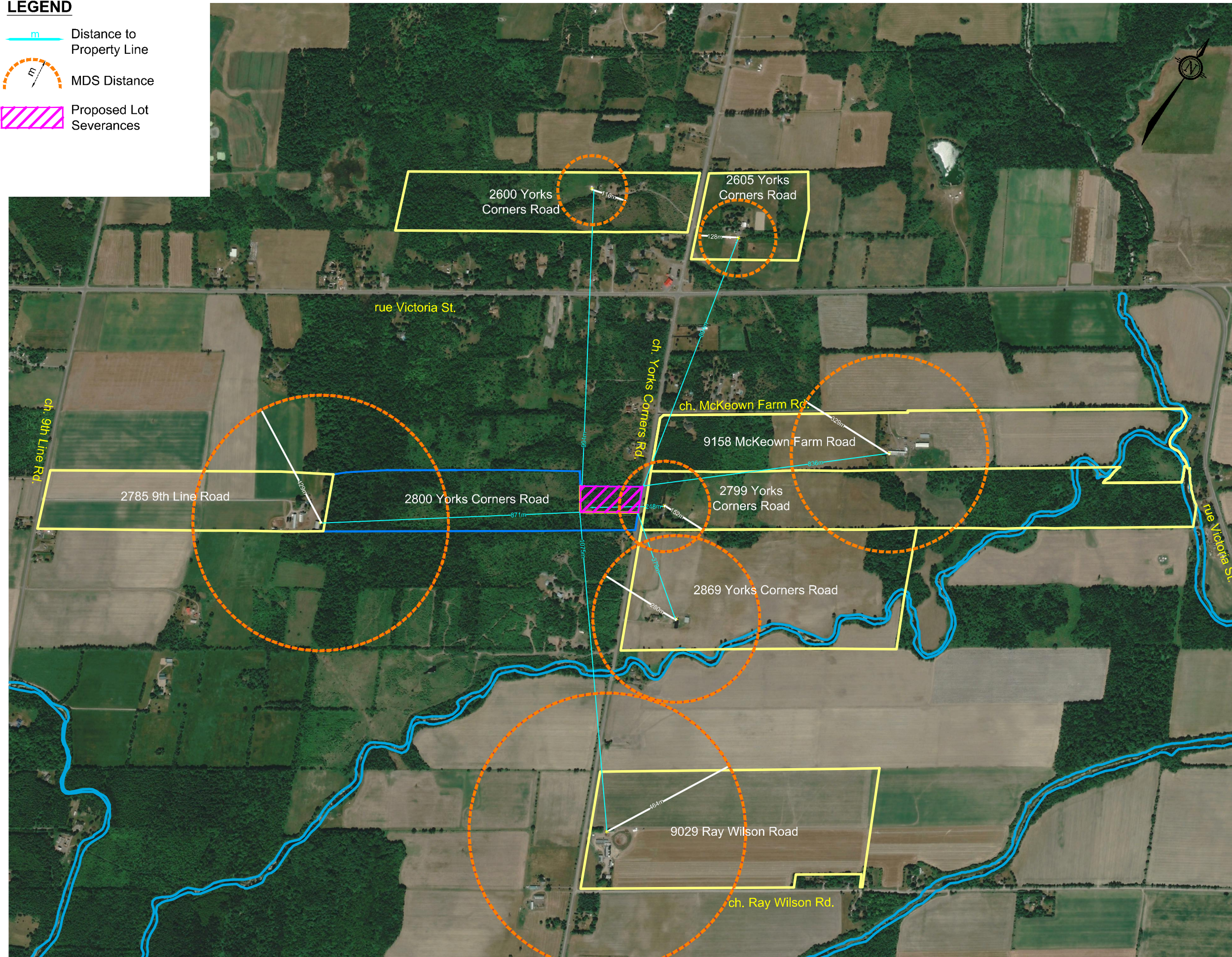
DRAWING No.
122172-CP

Engineers, Planners & Landscape Architects
Suite 209, 240 Michael Cowpland Drive
Ottawa, Ontario, Canada K2M 1P6
Telephone (613) 254-9643
Facsimile (613) 254-5867
Website www.nva-tech-eng.com

M:\2022\122172\CAD\Planning\Concept Plans\122172-CP.dwg, SEV, Oct 26, 2023 - 10:27am, wsloss

LEGEND

-  Distance to Property Line
-  MDS Distance
-  Proposed Lot Severances



KEY PLAN
N.T.S.

MINIMUM DISTANCE SEPARATION


2800 YORKS CORNERS ROAD

PART LOT 22, CON 9
Geographic Township of OSGOODE
CITY OF OTTAWA


Committee of Adjustment
Received | Reçu le

2023-11-02

City of Ottawa | Ville d'Ottawa
Comité de dérogation

1 : 1250 

I.	ISSUED FOR DISCUSSION	OCT xx/22	TM
No.	REVISION	DATE	BY

 Engineers, Planners & Landscape Architects Suite 209, 240 Michael Cowpland Drive Ottawa, Ontario, Canada K2M 1P6 Telephone: (613) 254-9643 Facsimile: (613) 254-5867 Website: www.nva.aec-l-eng.com	ISSUED OCTOBER, 2023
	PROJECT No. 122172
	DRAWING No. 122172-MDS

M:\2022\122172\CAD\Planning\Figures\122172-MDS.dwg, MDS, Oct 24, 2023 - 10:13am, wslloss