

McElroy Severance Sketch

3200 Mackey Road
Pt. Lot 8 & 9, Concession 3
Geographic Township of Marlborough
CITY OF OTTAWA

Key Map



Legend

- Subject Lands
- Non-Evaluated Wetlands
- Natural Heritage Overlay
- Watercourse
- MDS Setback

Committee of Adjustment
Received | Reçu le

2023-11-20

City of Ottawa | Ville d'Ottawa
Comité de dérogation

Notes

1. Locations for the wetlands and watercourse derived from the RVCA Online GIS mapping. Their locations on the sketch are approximate.
2. Location of the Natural Heritage Overlay derived from the City of Ottawa Official Plan Schedule C11-B and is approximate.
3. Partial boundary and dimensions for the subject property derived from Plan 4R-16525. All other dimensions are approximate based on GIS mapping.

Version Date: November 03, 2023

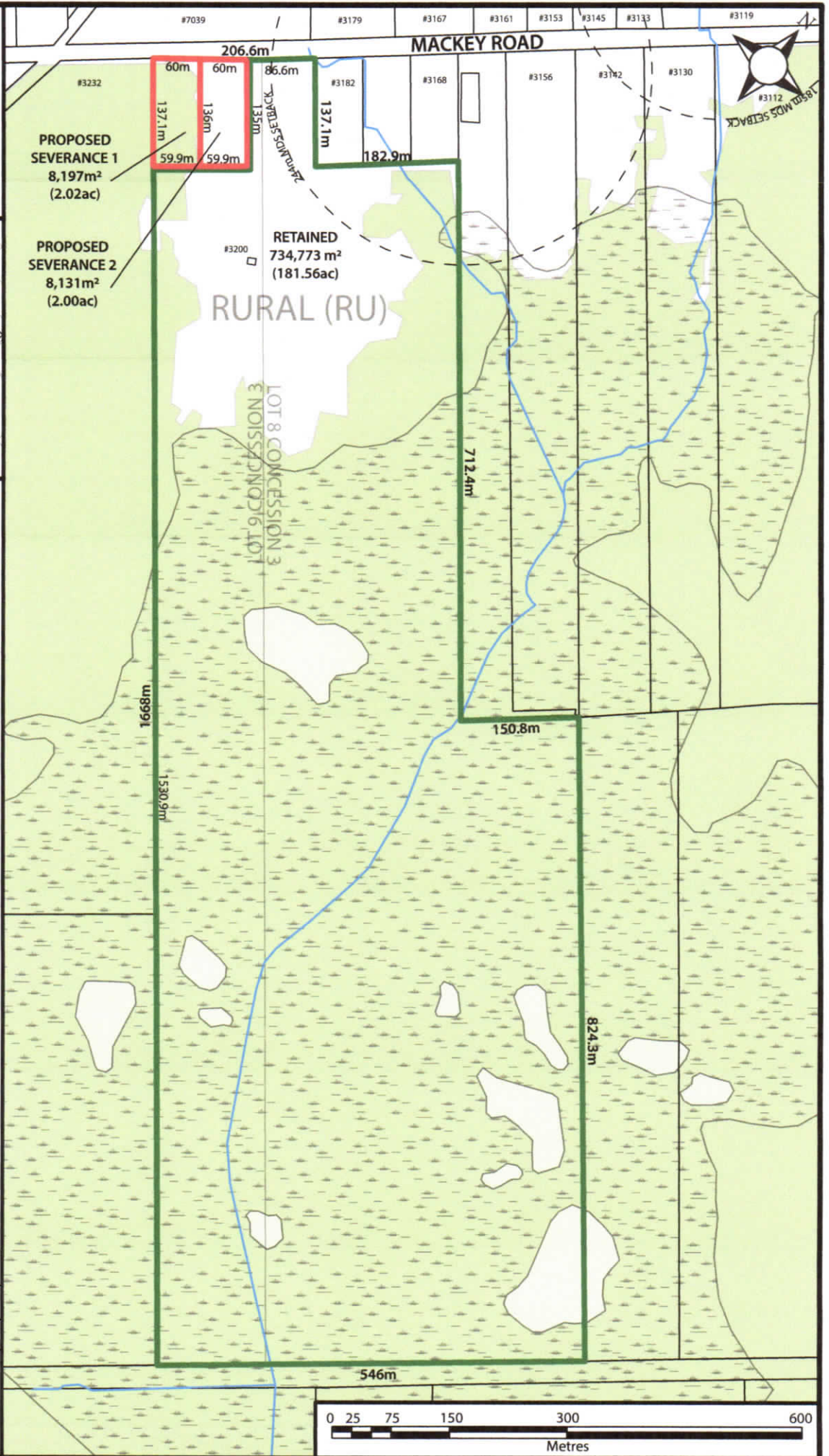
File No. 23-161

Drawn By: TG

ZanderPlan

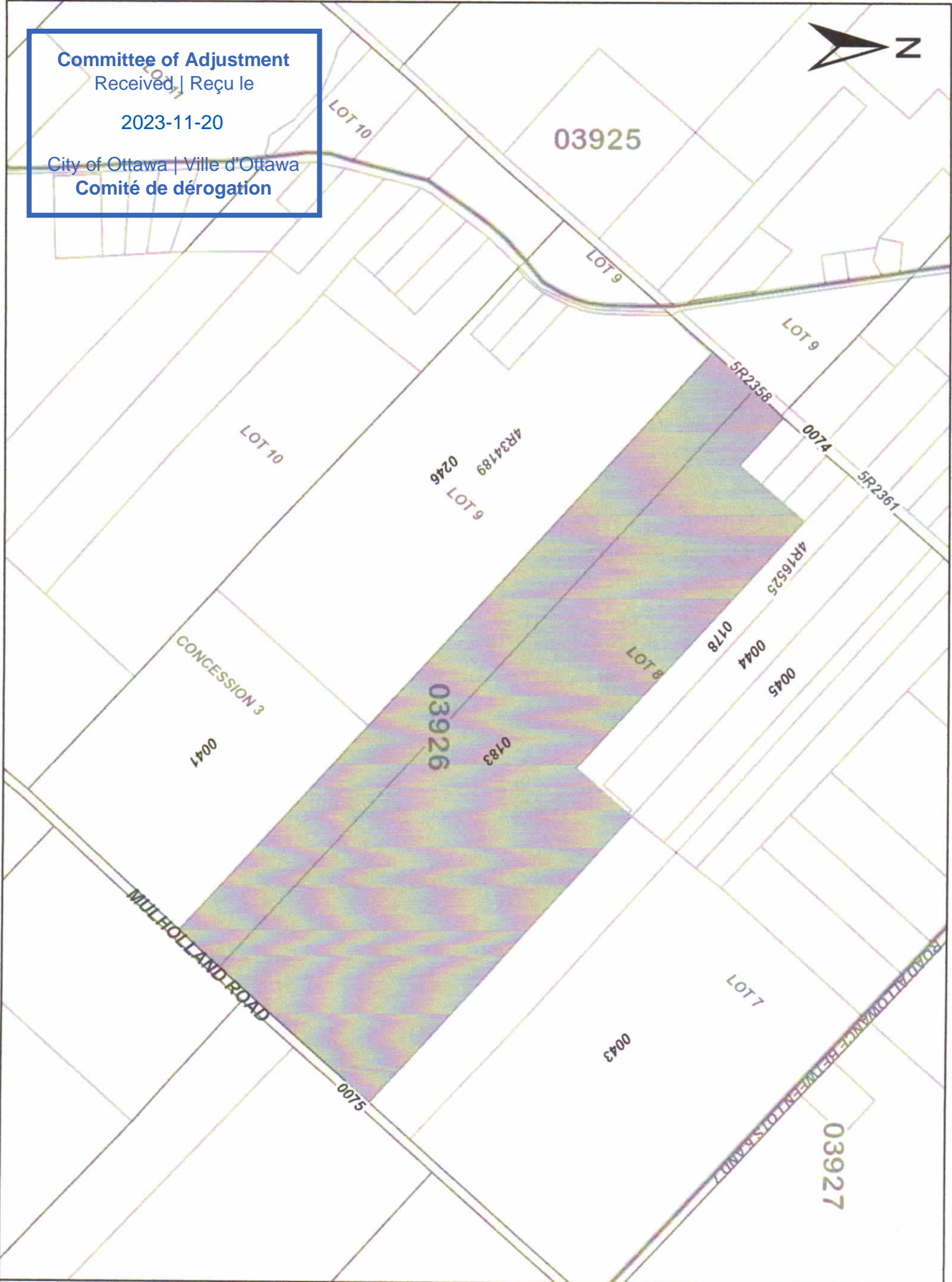
Your rural land planning experts

40 Sunset Boulevard, Perth, ON K7H 2Y4 613-264-9600





Committee of Adjustment
 Received | Reçu le
 2023-11-20
 City of Ottawa | Ville d'Ottawa
 Comité de dérogation



ServiceOntario

PRINTED ON 02 AUG, 2023 AT 15:40:56
 FOR ROSS



PROPERTY INDEX MAP
 OTTAWA-CARLETON (No. 04)

- LEGEND**
- FREEHOLD PROPERTY
 - LEASEHOLD PROPERTY
 - LIMITED INTEREST PROPERTY
 - CONDOMINIUM PROPERTY
 - RETIRED PIN (MAP UPDATE PENDING)
 - PROPERTY NUMBER
 - BLOCK NUMBER
 - GEOGRAPHIC FABRIC EASEMENT

THIS IS NOT A PLAN OF SURVEY

NOTES

REVIEW THE TITLE RECORDS FOR COMPLETE PROPERTY INFORMATION AS THIS MAP MAY NOT REFLECT RECENT REGISTRATIONS

THIS MAP WAS COMPILED FROM PLANS AND DOCUMENTS RECORDED IN THE LAND REGISTRATION SYSTEM AND HAS BEEN PREPARED FOR PROPERTY INDEXING PURPOSES ONLY

FOR DIMENSIONS OF PROPERTIES BOUNDARIES SEE RECORDED PLANS AND DOCUMENTS

ONLY MAJOR EASEMENTS ARE SHOWN

REFERENCE PLANS UNDERLYING MORE RECENT REFERENCE PLANS ARE NOT ILLUSTRATED



