



Ottawa Water Works Building (exterior), July 2018, City of Ottawa





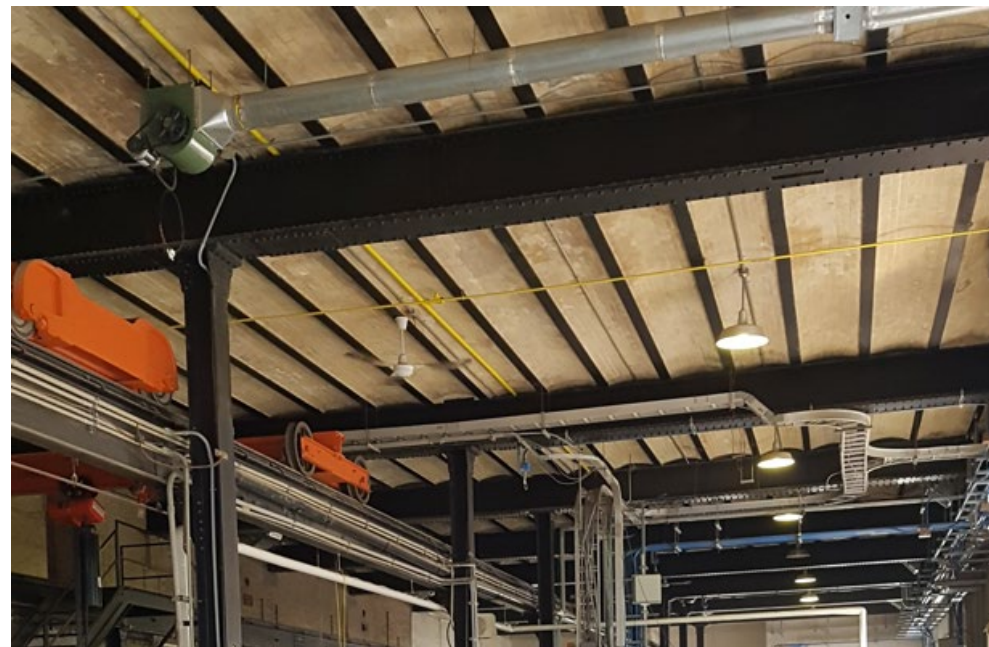
Ottawa Water Works Building (exterior), July 2018, City of Ottawa





Ottawa Water Works Building (exterior), July 2018, City of Ottawa





Ottawa Water Works Building (interior). Double staircase, pressure gauge, and original roof construction. July 2018, City of Ottawa





Ottawa Water Works Building (interior). Marble plaques. July 2018, City of Ottawa





Pooley's Bridge and channeled tailrace. Jun 2016, City of Ottawa





Tailrace, view looking northeast. Nov 2023, City of Ottawa



Three connected bridges: Lloyd Street Bridge (left), Grand Trunk Railway Bridge and Lett Street Bridge. Nov 2023, City of Ottawa and © 2023 Google, CNES / Airbus





Booth Street Bridge (left), Broad Street Bridge (top right) and Central Canada Railway Bridge (bottom right). Nov 2023, City of Ottawa





Open aqueduct looking northeast (remnant limestone abutments, sumac and other low shrubs). Nov 2023, City of Ottawa





Open aqueduct, north wall meeting the Central Canada Railway Bridge. Nov 2023, City of Ottawa





Headworks and mature trees at the Kichi Sibi / Ottawa River. Jun 2023 © Google