

Committee of Adjustment

Received | Reçu le

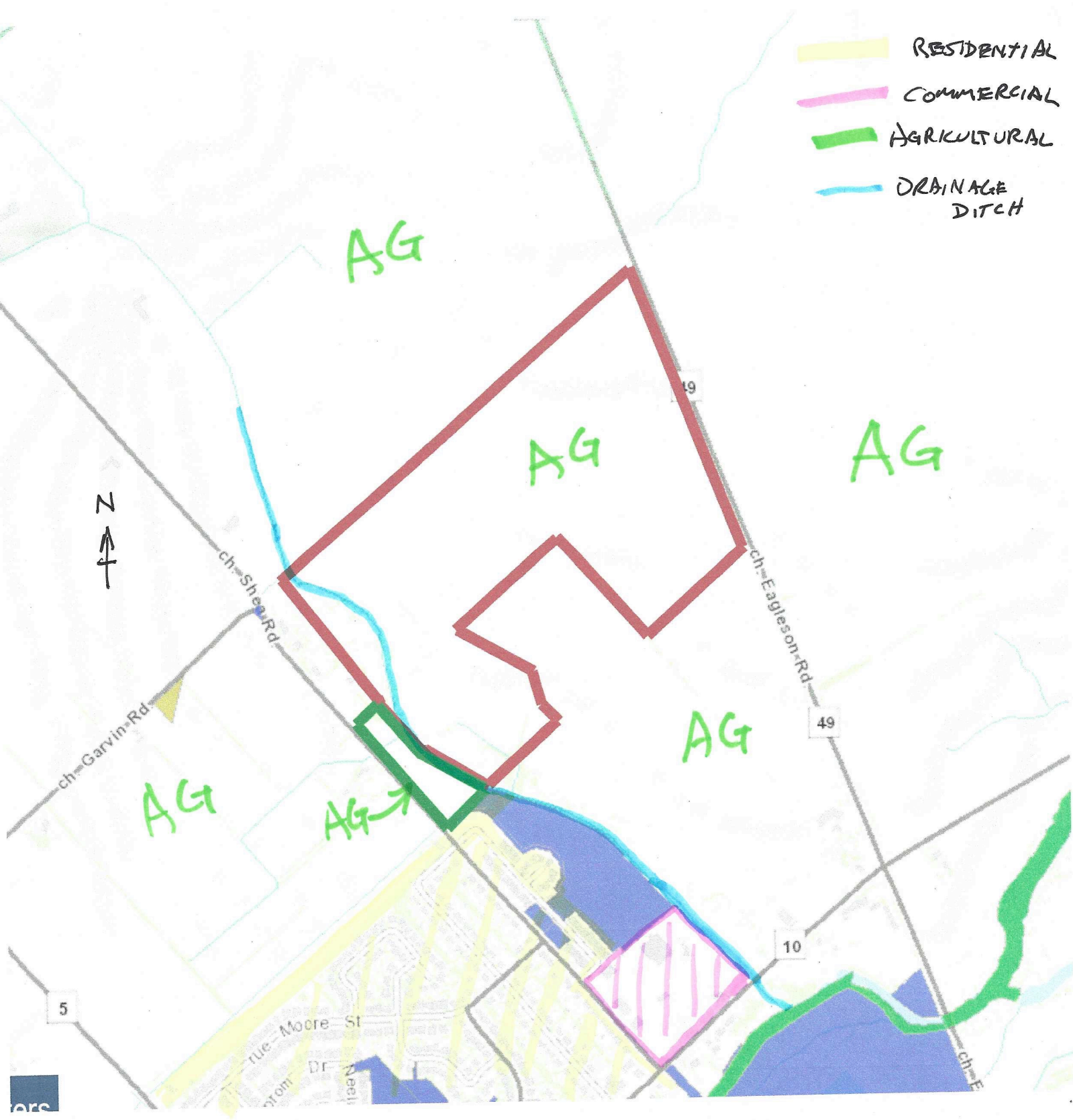
2023-12-01

City of Ottawa | Ville d'Ottawa

Comité de dérogation



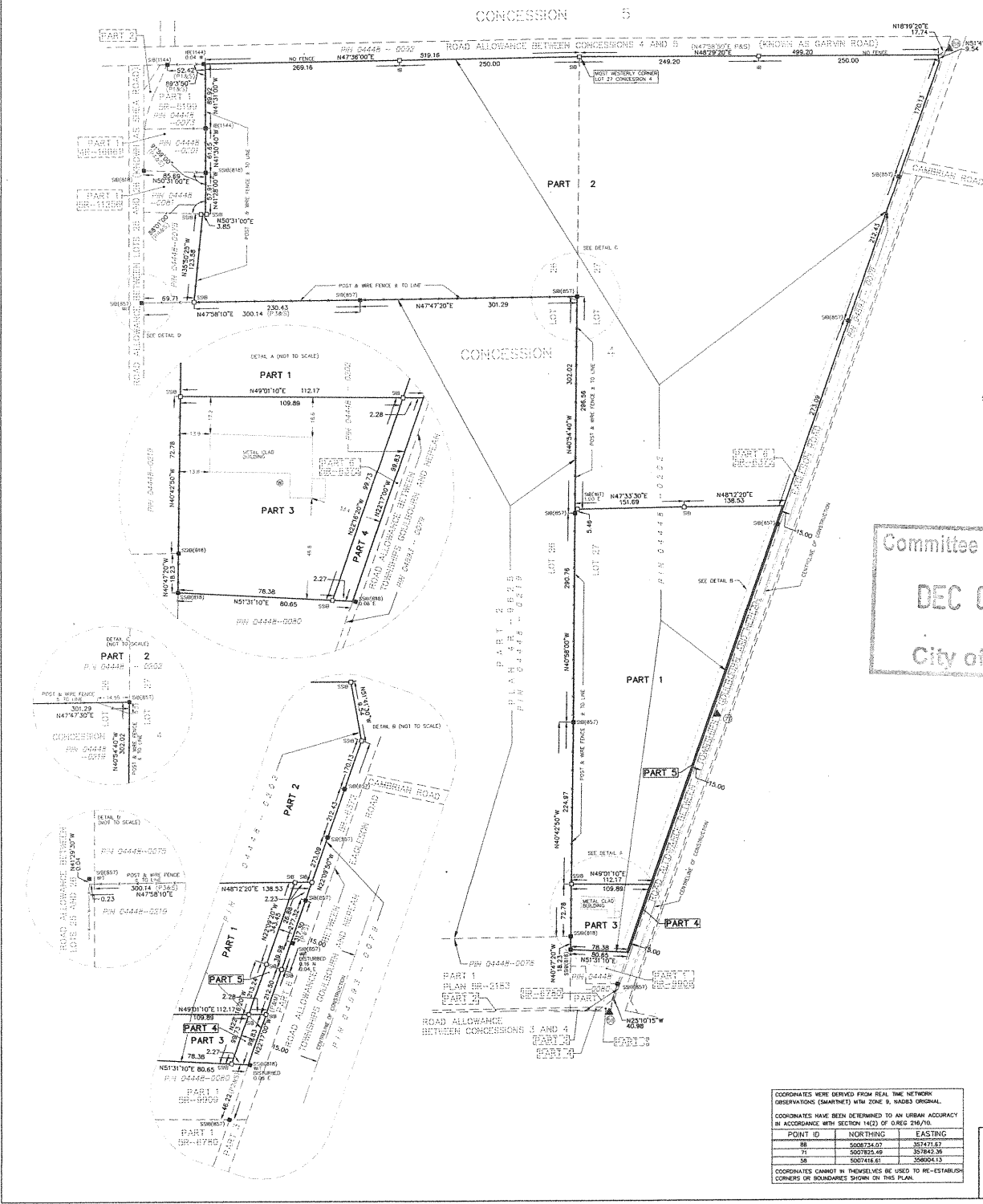
- RESIDENTIAL
- COMMERCIAL
- AGRICULTURAL
- DRAINAGE DITCH



**METRIC**  
DISTANCES AND COORDINATES SHOWN ON THIS PLAN ARE IN METRES AND CAN BE CONVERTED TO FEET BY DIVIDING BY 0.3048

SCHEDULE			
PART	LOT	CONCESSION	PIN
183	PART OF 27	4	ALL OF 04448-0202
2	PART OF 26		
3	PART OF 27		
364	PART OF 27		

I REQUIRE THIS PLAN TO BE DEPOSITED UNDER THE LAND TILES ACT.  
DATE: 20/01/23  
C. Holloway  
Representative for:  
JOHN H. GUTHRIE, O.L.S.  
**PLAN 4R-27656**  
RECEIVED AND DEPOSITED  
DATE: 20/01/24  
C. Holloway  
Representative for:  
LAND TILES DIVISION OF OTTAWA - CARLETON (N° 4)



**PLAN OF SURVEY OF**  
PART OF LOTS 26 & 27  
CONCESSION 4  
TOWNSHIP OF GOULBURN  
CITY OF OTTAWA  
SCALE 1 : 2500  
FAIRHALL, MOFFATT & WOODLAND LIMITED  
ONTARIO LAND SURVEYORS

**NOTES**  
1. BEARINGS ARE GRID, DERIVED FROM OBSERVED REFERENCE POINTS (8) AND (9) BY REAL TIME NETWORK OBSERVATIONS AND ARE REFERRED TO THE CENTRAL MERIDIAN, TOWNSHIP LONGITUDE WITH ZONE 8, NAD83 ORIGINAL.  
2. DISTANCES ARE GROUND AND CAN BE CONVERTED TO GRID BY MULTIPLYING BY THE COMBINED SCALE FACTOR 0.99925.

Committee of Adjustment  
DEC 01 2023  
City of Ottawa

**LEGEND**  
□ - SURVEY MONUMENT SET  
■ - SURVEY MONUMENT FOUND  
S - STANDARD IRON BAR  
S58 - SHORT STANDARD IRON BAR  
# - IRON BAR  
# - BOUNDARY  
(P) - PLAN SR-8372  
(P1) - PLAN SR-5199  
(P2) - PLAN SR-8909  
(P3) - PLAN SR-8628  
(P4) - PLAN SR-11226  
(S) - SET  
(M) - MEASURED  
PIN - PROPERTY IDENTIFIER NUMBER  
(8) - SOURCE UNKNOWN  
(85) - FAIRHALL, MOFFATT & WOODLAND LIMITED, O.L.S.  
(RMC) - REGIONAL MUNICIPALITY OF OTTAWA-CARLETON  
(818) - JOHN ROBERT HILEY O.L.S. (E.J. WILLIAMS SURVEYING LIMITED)  
(1144) - C.B. ROGERS O.L.S.

**SURVEYOR'S CERTIFICATE**  
I CERTIFY THAT:  
1. THIS SURVEY AND PLAN ARE CORRECT AND IN ACCORDANCE WITH THE SURVEY ACT, THE SURVEYORS ACT, THE LAND TILES ACT AND THE REGULATIONS MADE UNDER THEM.  
2. THE SURVEY WAS COMPLETED ON JANUARY 14, 2014.  
DATE: 20/01/23  
C. Holloway  
JOHN H. GUTHRIE  
ONTARIO LAND SURVEYOR

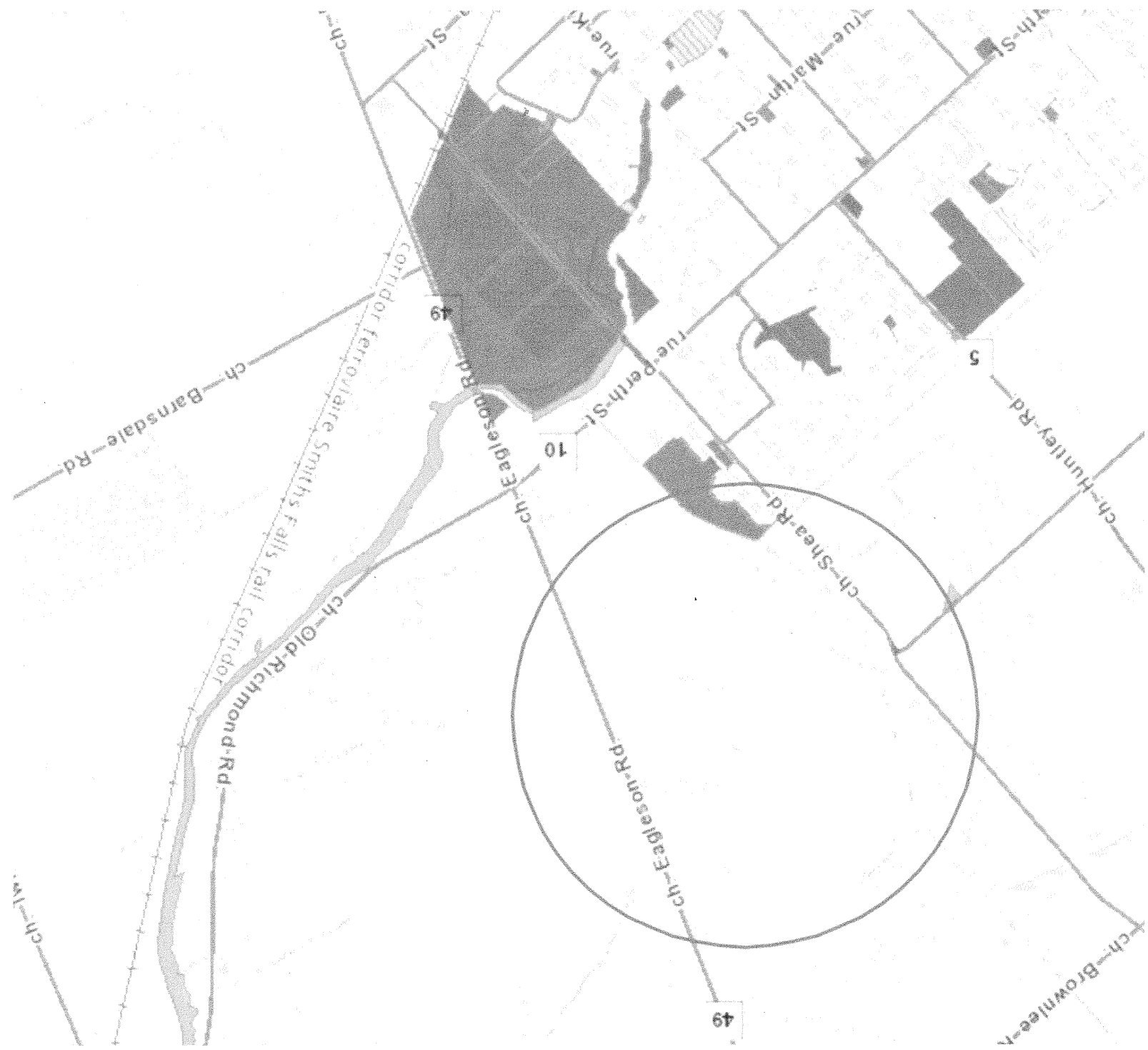
COORDINATES WERE DERIVED FROM REAL TIME NETWORK OBSERVATIONS (SMARTNET) WITH ZONE 8, NAD83 ORIGINAL. COORDINATES HAVE BEEN DETERMINED TO AN URBAN ACCURACY IN ACCORDANCE WITH SECTION 14(2) OF OREG 218/10.

POINT ID	NORTHING	EASTING
88	500734.07	357471.87
71	500735.49	357463.36
58	5007416.61	358004.13

COORDINATES CANNOT BY THEMSELVES BE USED TO RE-ESTABLISH CORNERS OR BOUNDARIES SHOWN ON THIS PLAN.

**Fairhall Moffatt & Woodland**  
Surveying and Land Information Services  
175 - 4 GORDON STREET, OTTAWA, ONTARIO K1S 5H6  
TEL: 613-733-1088 FAX: 613-733-1099  
OSR No. P14900  
E 33379  
E 508833  
REFERENCE No. 175 - 4 GORDON STREET, OTTAWA, ONTARIO K1S 5H6  
S. 10057199(0001) 3. 10057199(0001) 3. 10057199(0001) 3. 10057199(0001) 3.

Committee of Adjustment  
DEC 01 2023  
City of Ottawa



Committee of Adjustment  
DEC 01 2023  
City of Ottawa

Distances shown on this plan are rounded to the nearest millimetre and can be rounded to the nearest millimetre by the computer based on the data provided.  
Bearings are given bearings derived from the quality line of Shear Road shown to be 41°34'42"W on Plan 44-21679.  
Coordinates are derived from Can-Nat 3-D Real Time Network GPS observations on monument A and B shown herein, and are referred to the Centre Meridian of M 18 Zone 9 (176°30' West Longitude) NAD-83 (original).  
Coordinate values are to urban accuracy in accordance with O. Reg. 216/10.  
Point A Northing: 5007479.40 Easting: 328871.18  
Point B Northing: 5007487.53 Easting: 327818.66  
Caution: Coordinates cannot, in themselves, be used to re-establish corners or boundaries shown on this plan.

SCHEDULE		
PART	LOT	CONCESSION
1	26	4
2	26	4
3	26	4
4	26	4
5	26	4
6	26	4
7	26	4
8	26	4
9	26	4
10	26	4
11	26	4
12	26	4

Part 2 and 4: Subject to assessment: Part 0C104923  
Part 3: Subject to assessment: Part 0C104923

PLAN 4R-2074  
RECEIVED AND DELETED  
DATE: May 14 2024  
L. M. R. O. S. J. S.  
CANTARIO LAND SURVEYOR  
DEPUTY REGISTRAR FOR THE LAND TILES DIVISION OF OTTAWA-CANLETON NO. 4

**PLAN OF SURVEY OF PART OF LOT 26 CONCESSION 4**  
Geographic Township of Goulbourn  
CITY OF OTTAWA  
Surveyed by Anna O'Sullivan, Vollebekk Ltd.  
Scale 1:1500

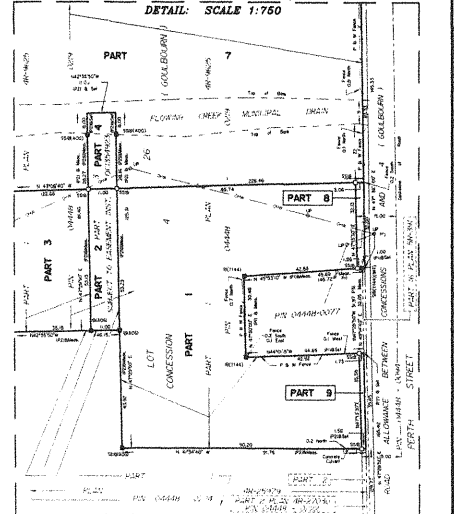
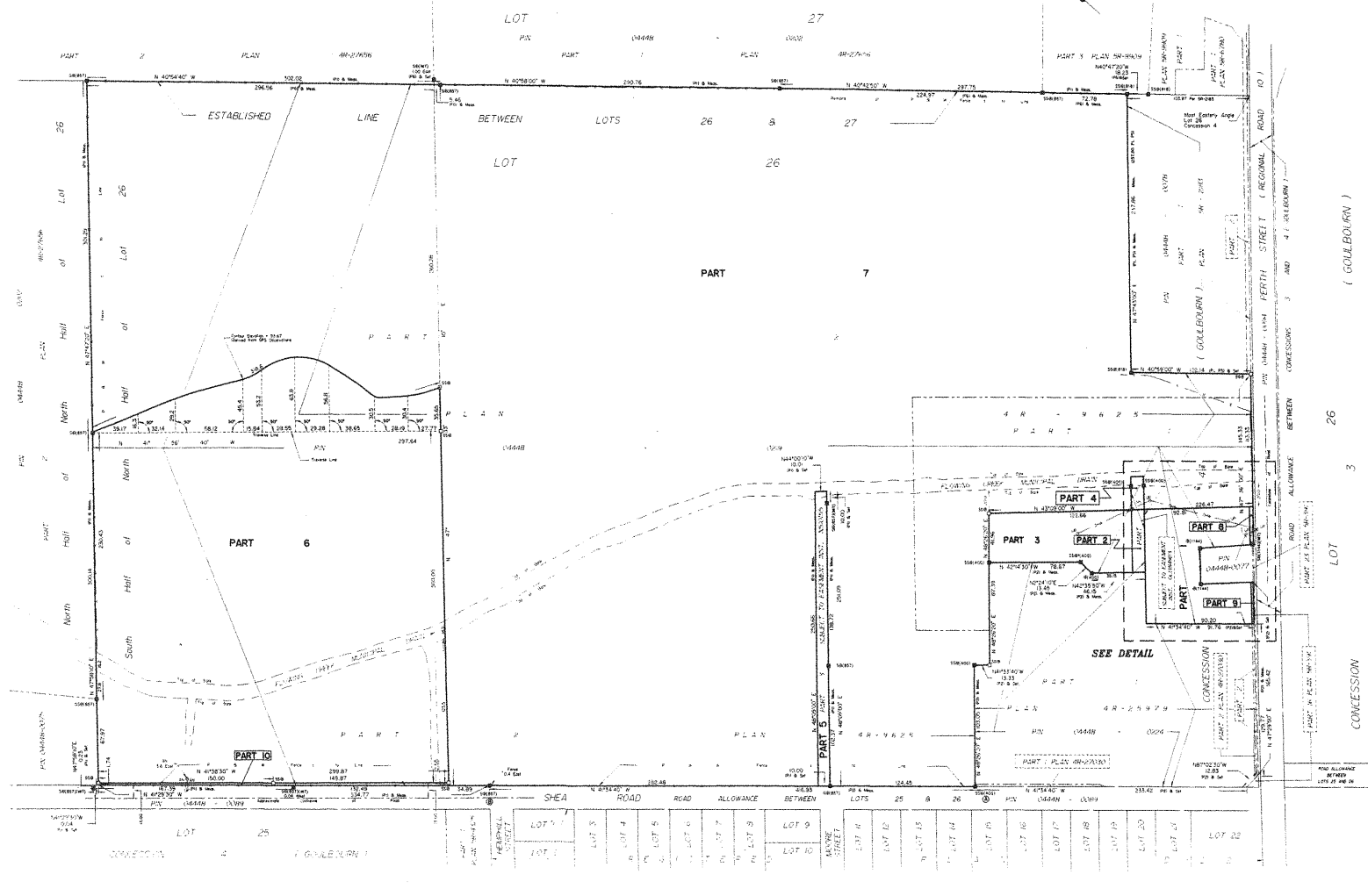
**Metric DISTANCES AND COORDINATES SHOWN ON THIS PLAN ARE IN METRES AND CAN BE CONVERTED TO FEET BY DIVIDING BY 0.3048.**

**Surveyor's Certificate**  
I, the undersigned, being a duly qualified and licensed Surveyor under the Survey Act, the Surveyors Act, the Land Titles Act and the regulations made under them:  
1. The survey and plan are correct and in accordance with the Survey Act and the Surveyors Act, the Land Titles Act and the regulations made under them.  
2. The survey was completed on the 31st day of March, 2014.

*Anna O'Sullivan*  
Surveyor

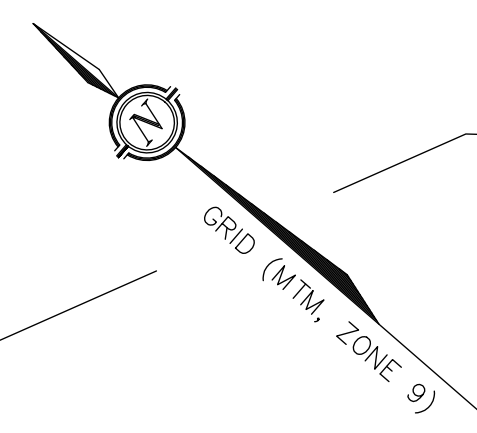
**Notes & Legend**

—	Survey Monument Point
—	Survey Monument Point
—	Standard Iron Bar
—	Brass Standard Iron Bar
—	Iron Bar
—	Witness
—	Area, O'Sullivan, Vollebekk Ltd
—	Measure
—	Post & Wire
—	Plan 44-2825
—	Plan 48-2879
—	Plan 58-281
—	Plan 58-288
—	Plan 58-289
—	Plan 58-294
—	Plan 48-2768
—	Utility Pole
—	Anchor



LAND SURVEYORS' PROFESSIONAL SOCIETY OF ONTARIO  
1100 Wellington Street West  
Toronto, Ontario M5G 1L3  
Phone: (416) 593-9200 Fax: (416) 593-9214  
Web: www.lso.on.ca  
L.S.O. License No. 123456789

**METRIC**  
DISTANCES AND COORDINATES SHOWN ON THIS PLAN ARE IN METRES AND CAN BE CONVERTED TO FEET BY DIVIDING BY 0.3048



PLAN PREPARED FOR COMMITTEE OF ADJUSTMENT PURPOSES  
DECEMBER 11, 2023

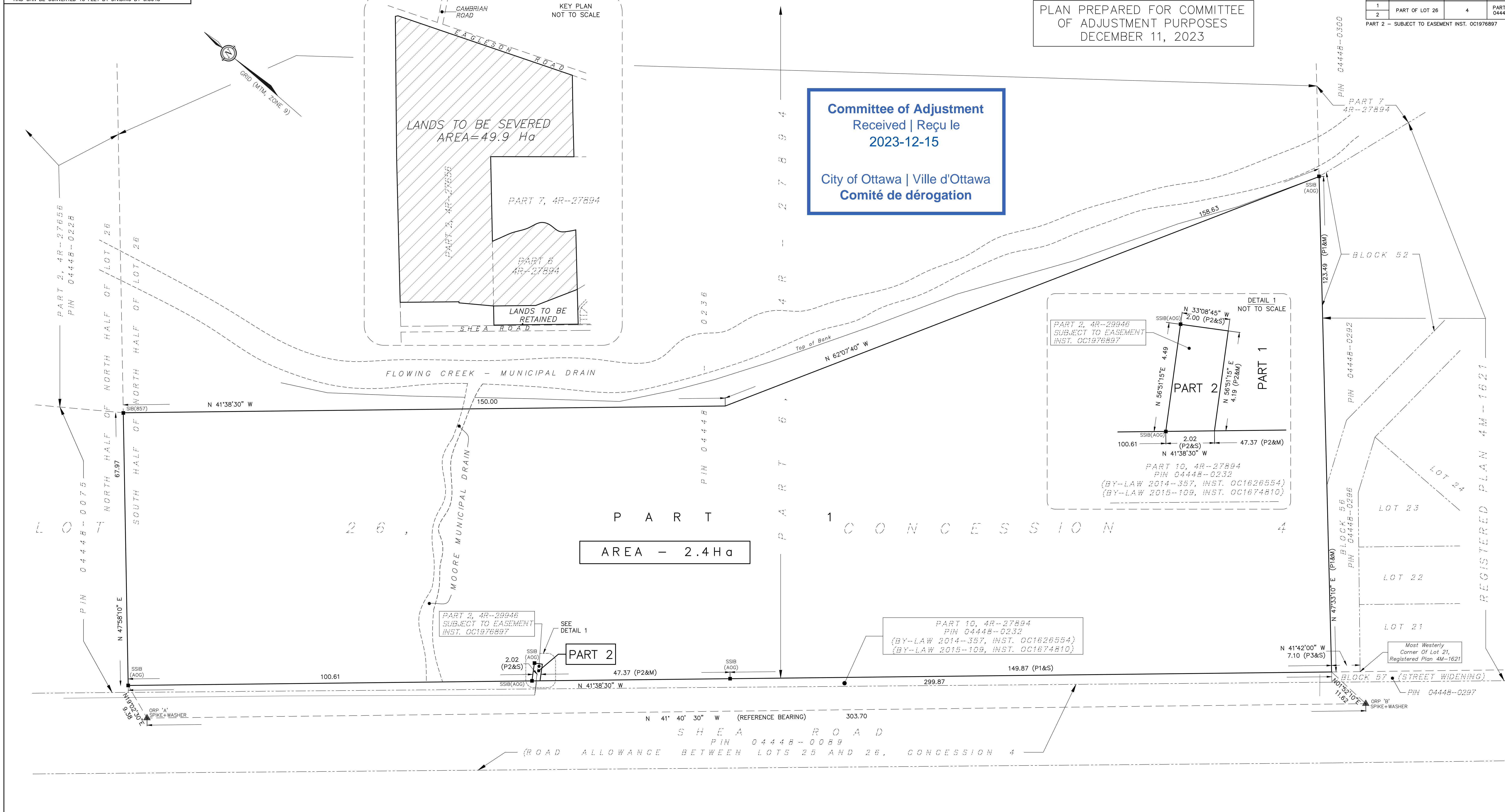
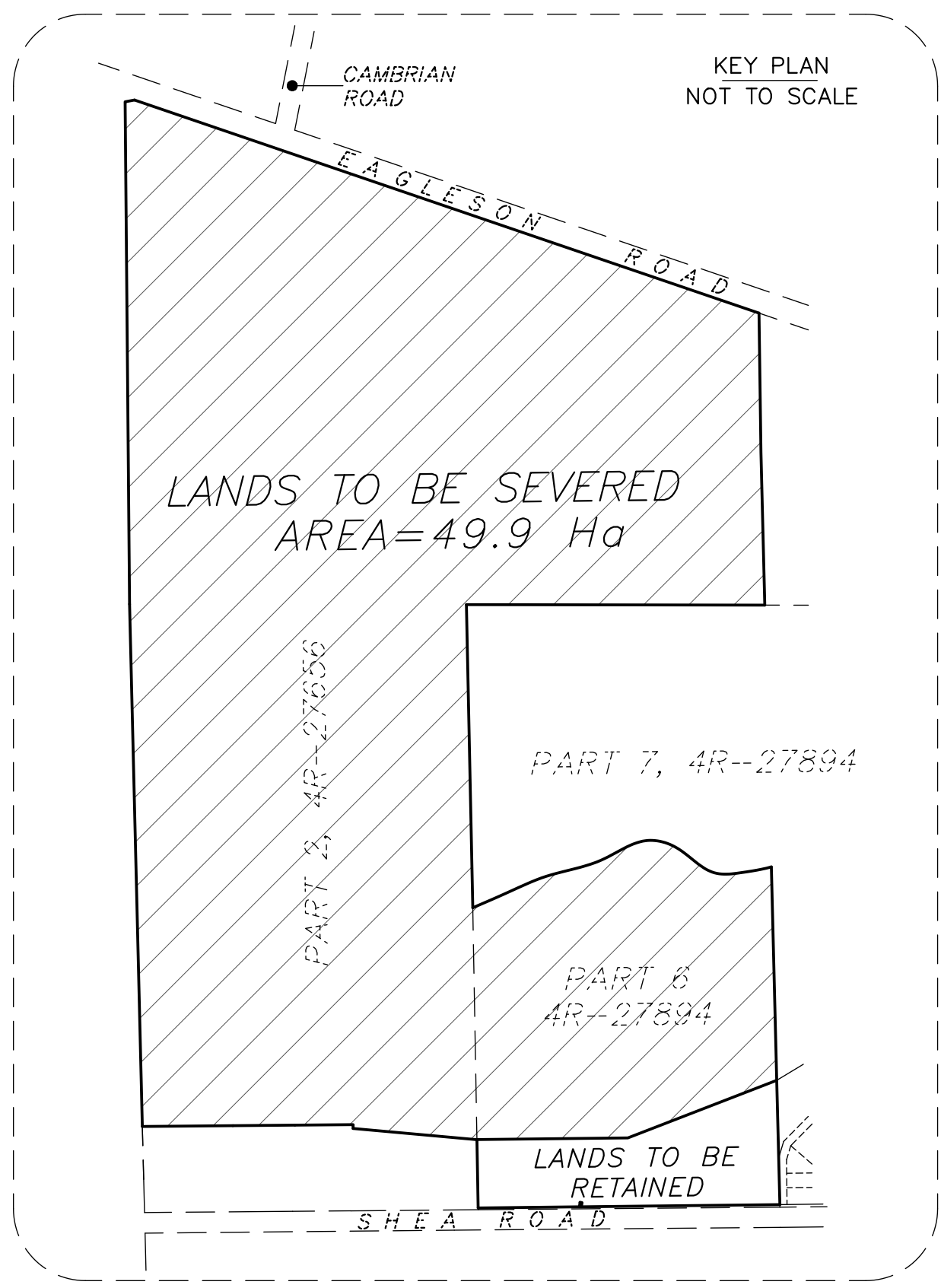
**Committee of Adjustment**  
Received | Reçu le  
2023-12-15  
**City of Ottawa | Ville d'Ottawa**  
**Comité de dérogation**

SCHEDULE			
PART	LOT	CONCESSION	PIN
1			
2	PART OF LOT 26	4	PART OF PIN 04448-0236

PART 2 - SUBJECT TO EASEMENT INST. OC1976897

I REQUIRE THIS PLAN TO BE DEPOSITED UNDER THE LAND TITLES ACT.  
DATE -----  
JOHN H. GUTRI, O.L.S.

PLAN 4R-  
RECEIVED AND DEPOSITED  
DATE -----  
"REPRESENTATIVE FOR"  
LAND REGISTRAR FOR THE  
LAND TITLES DIVISION OF  
OTTAWA - CARLETON (N° 4)



PLAN OF SURVEY OF  
PART OF LOT 26  
CONCESSION 4  
GEOGRAPHIC TOWNSHIP OF GOULBOURN  
CITY OF OTTAWA



**FAIRHALL, MOFFATT & WOODLAND LIMITED**  
ONTARIO LAND SURVEYORS

- NOTES**
- BEARINGS ARE GRID, DERIVED FROM OBSERVED REFERENCE POINTS (A) AND (B) BY REAL TIME NETWORK OBSERVATIONS AND ARE REFERRED TO THE CENTRAL MERIDIAN, 76°30'W LONGITUDE MTM ZONE 9, NAD83 (ORIGINAL).
  - DISTANCES ARE GROUND AND CAN BE CONVERTED TO GRID BY MULTIPLYING BY THE COMBINED SCALE FACTOR 0.999924.

COORDINATES WERE DERIVED FROM REAL TIME NETWORK OBSERVATIONS (SMARTNET), MTM ZONE 9, NAD83 (ORIGINAL).  
COORDINATES HAVE BEEN DETERMINED TO AN URBAN ACCURACY IN ACCORDANCE WITH SECTION 14(2) OF O.REG 216/10.

POINT ID	NORTHING	EASTING
ORP A	5007722.454	356863.666
ORP B	5007495.633	357065.588

COORDINATES CANNOT IN THEMSELVES BE USED TO RE-ESTABLISH CORNERS OR BOUNDARIES SHOWN ON THIS PLAN.

- LEGEND**
- - SURVEY MONUMENT FOUND
  - SIB - STANDARD IRON BAR
  - SSIB - SHORT STANDARD IRON BAR
  - (P1) - PLAN 4R-27894
  - (P2) - PLAN 4R-29946
  - (P3) - PLAN 4M-1621
  - (S) - SET
  - (M) - MEASURED
  - (857) - FAIRHALL, MOFFATT & WOODLAND LIMITED, O.L.S.
  - (AOG) - ANNIS, O'SULLIVAN, VOLLEBECK LTD., O.L.S.
  - PIN - PROPERTY IDENTIFIER NUMBER
  - ▲ - PROJECT CONTROL MONUMENT

**SURVEYOR'S CERTIFICATE**

I CERTIFY THAT:  
1. THIS SURVEY AND PLAN ARE CORRECT AND IN ACCORDANCE WITH THE SURVEYS ACT, THE SURVEYORS ACT, THE LAND TITLES ACT AND THE REGULATIONS MADE UNDER THEM.  
2. THE SURVEY WAS COMPLETED ON

DATE -----  
JOHN H. GUTRI  
ONTARIO LAND SURVEYOR

THIS PLAN OF SURVEY RELATES TO AOLS PLAN SUBMISSION FORM NUMBER V-69742

 <b>Fairhall</b> <b>Moffatt &amp;</b> <b>Woodland</b> ONTARIO LAND SURVEYORS Surveying and Land Information Services 100-650 TERRY FOX DRIVE, ANAHEIM, ONTARIO M2L 4B6 TEL: (613) 591-2540 FAX: (613) 591-1495 www.fmw.on.ca	 OTTAWA	JOB No. A D 3 1 3 0 0
		REFERENCE No. E 357001, N 5007649 179-4-GOULBOURN RP_AD313_REV1.dwg (8)