

METRIC
DISTANCES AND COORDINATES SHOWN ON THIS PLAN ARE IN METRES
AND CAN BE CONVERTED TO FEET BY DIVIDING BY 0.3048

Committee of Adjustment
Received | Reçu le
2023-12-19
City of Ottawa | Ville d'Ottawa
Comité de dérogation

SCHEDULE				
PART	BLOCK	REGISTERED PLAN	PIN	AREA(sq.m.)
1	21	4M-1696	04463-0385	12870
2				569
3				3070
4	PART OF BLOCK 22		04463-0386	19
5				325

I REQUIRE THIS PLAN TO BE
DEPOSITED UNDER THE
LAND TITLES ACT.

DATE _____

JOHN H. GUTRI, O.L.S.

PLAN 4R-
RECEIVED AND DEPOSITED

DATE _____

REPRESENTATIVE FOR
LAND REGISTRAR FOR THE
LAND TITLES DIVISION OF
OTTAWA - CARLETON (N° 4)

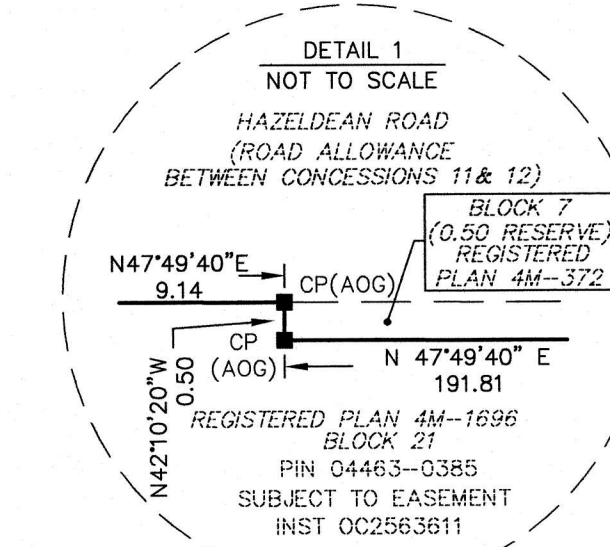
PLAN PREPARED FOR
COMMITTEE OF ADJUSTMENT
PURPOSES NOVEMBER 23, 2023

HAZELDEAN ROAD
(ROAD ALLOWANCE BETWEEN CONCESSIONS 11 & 12)

BLOCK 7
(0.50 RESERVE)
REGISTERED PLAN 4M-372
PIN 04463-0289

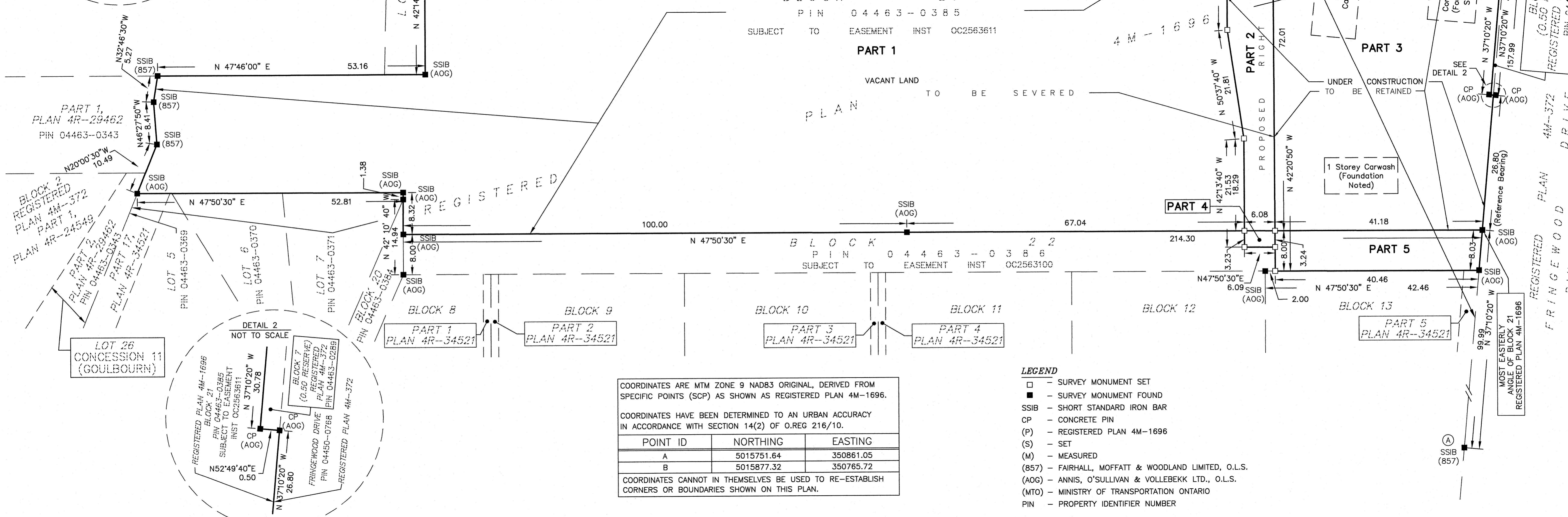
BLOCK 10
(ROAD WIDENING)
REGISTERED PLAN 4M-372

PARTS 1 TO 3 - SUBJECT TO EASEMENT INST. OC2563611
PARTS 4 TO 5 - SUBJECT TO EASEMENT INST. OC2563100



GEOGRAPHIC TOWNSHIP
OF GOULBOURN
CONCESSION 11

LOT 26
PIN 04463-0003



PLAN OF SURVEY OF
BLOCK 21
AND
PART OF BLOCK 22
REGISTERED PLAN 4M-1696
CITY OF OTTAWA

SCALE 1 : 500
0 10 20 50 metres
FAIRHALL, MOFFATT & WOODLAND LIMITED
ONTARIO LAND SURVEYORS

- NOTES**
- BEARINGS ARE GRID, DERIVED FROM REGISTERED PLAN 4M-1696 POINTS (A) & (B) SHOWN AS HAVING A BEARING OF N 37°10'20" W AND ARE REFERRED TO CENTRAL MERIDIAN, 76°30' W LONGITUDE, MTM ZONE 9 (NAD83 ORIGINAL).
 - DISTANCES ARE GROUND AND CAN BE CONVERTED TO GRID BY MULTIPLYING BY THE COMBINED SCALE FACTOR 0.999910.
 - ALTERNATE AND REDUCED LENGTH MONUMENTS SET DUE TO UNDERGROUND UTILITY HAZARD.

SURVEYOR'S CERTIFICATE
I CERTIFY THAT:
1. THIS SURVEY AND PLAN ARE CORRECT AND IN ACCORDANCE WITH THE SURVEYS ACT, THE SURVEYORS ACT, THE LAND TITLES ACT AND THE REGULATIONS MADE UNDER THEM.
2. THE SURVEY WAS COMPLETED ON

2023/11/24
DATE
JOHN H. GUTRI
ONTARIO LAND SURVEYOR

THIS PLAN OF SURVEY RELATES TO AOLS PLAN SUBMISSION _____

Fairhall Moffatt & Woodland LIMITED ONTARIO LAND SURVEYORS Surveying and Land Information Services 100-600 TERRY FOX DRIVE, KANATA, ONTARIO K2L 4B6 TEL: (613) 591-2580 FAX: (613) 591-1495 www.fmw.on.ca	JOB No. AD30700
	E 350695, N 5015786
	REFERENCE No. 1-4M-1696
	S:\JOBS\AD30700\DWG\ rp_ad307.dwg (RR)

COORDINATES ARE MTM ZONE 9 NAD83 ORIGINAL, DERIVED FROM SPECIFIC POINTS (SCP) AS SHOWN AS REGISTERED PLAN 4M-1696.

COORDINATES HAVE BEEN DETERMINED TO AN URBAN ACCURACY IN ACCORDANCE WITH SECTION 14(2) OF O.REG 216/10.

POINT ID	NORTHING	EASTING
A	5015751.64	350861.05
B	5015877.32	350765.72

COORDINATES CANNOT IN THEMSELVES BE USED TO RE-ESTABLISH CORNERS OR BOUNDARIES SHOWN ON THIS PLAN.

- LEGEND**
- - SURVEY MONUMENT SET
 - - SURVEY MONUMENT FOUND
 - SSIB - SHORT STANDARD IRON BAR
 - CP - CONCRETE PIN
 - (P) - REGISTERED PLAN 4M-1696
 - (S) - SET
 - (M) - MEASURED
 - (857) - FAIRHALL, MOFFATT & WOODLAND LIMITED, O.L.S.
 - (AOG) - ANNIS, O'SULLIVAN & VOLLEBEKK LTD., O.L.S.
 - (MTO) - MINISTRY OF TRANSPORTATION ONTARIO
 - PIN - PROPERTY IDENTIFIER NUMBER