

**ROAD ALLOWANCE BETWEEN CONCESSIONS 3 AND 4 ( HUNTLEY )**  
Known As **WILLIAM MOONEY ROAD**

PIN 04538 0164

**Committee of Adjustment**  
Received | Reçu le  
**2023-12-15**  
City of Ottawa | Ville d'Ottawa  
Comité de dérogation

I REQUIRE THIS PLAN TO BE DEPOSITED UNDER THE LAND TITLES ACT. **PLAN 4R-**

DATE \_\_\_\_\_ RECEIVED AND DEPOSITED DATE: \_\_\_\_\_

T. HARTWICK  
ONTARIO LAND SURVEYOR  
REPRESENTATIVE FOR  
LAND REGISTRAR FOR THE  
LAND TITLES DIVISION OF  
OTTAWA-CARLETON NO. 4.

AREA (Sq.m.)	PART	LOT	CONCESSION	PIN
8022.6		PART OF 9	4 (HUNTLEY)	PART OF 04538-0085
8022.6	2			

PLAN OF SURVEY OF

**SCHEDULE**  
**PART OF LOT 9**  
**CONCESSION 4**  
**Geographic Township of Huntley**  
**CITY OF OTTAWA**  
Surveyed by Annis, O'Sullivan, Vollebek Ltd.

Scale 1 : 750  
30 22.5 15 7.5 0 15 30 Metres

Metric  
DISTANCES AND COORDINATES SHOWN ON THIS PLAN ARE IN METRES AND CAN BE CONVERTED TO FEET BY DIVIDING BY 0.3048.

**Surveyor's Certificate**  
CERTIFY THAT:

1. This survey and plan are correct and in accordance with the Surveys Act, the Surveyors Act and the Land Titles Act and the regulations made under them.
2. The survey was completed on the \_\_\_ day of \_\_\_\_\_, 2023.

Date \_\_\_\_\_ T. Hartwick  
Ontario Land Surveyor

This plan of survey relates to AOLS Plan Submission Form Number V-

**Notes & Legend**

□	Denotes	Survey Monument Planted
■	Denotes	Survey Monument Found
SIB		Standard Iron Bar
SSIB		Short Standard Iron Bar
IB		Iron Bar
(WIT)		Witness
(AOG)		Annis, O'Sullivan, Vollebek Ltd.
Meas.		Measured
(P1)		Plan 4R-34121
(P2)		Plan 5R-10933
(P3)		Plan 5R-10883

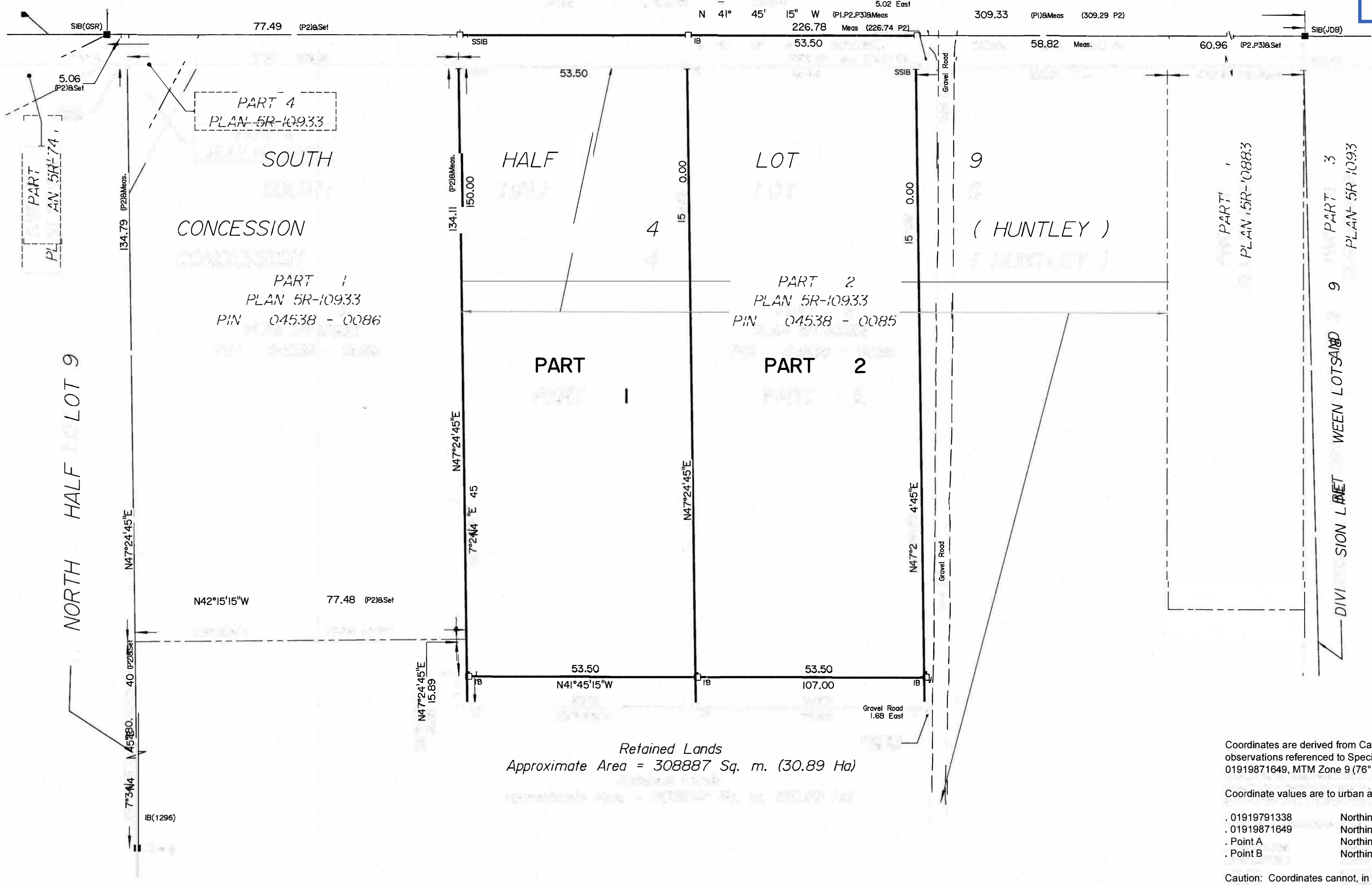
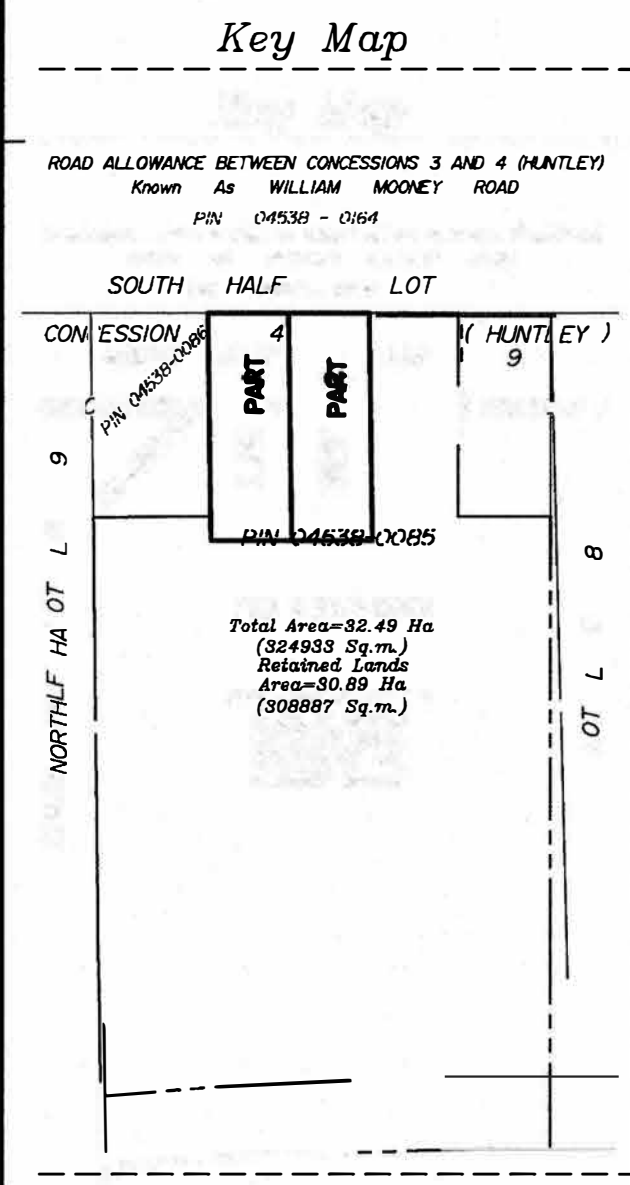
Distances shown on this plan are ground distances and can be converted to grid distances by multiplying by the combined scale factor of 0.9999xx.

Bearings are grid, derived from Can-Net 2016 Real Time Network GPS observations on reference points A and B, shown hereon, having a bearing of Nxx°xx'xx"W and are referenced to Specified Control Points 01919791338 and 01919871649, MTM Zone 9 ( 76°30' West Longitude ) NAD-83 (original).

For bearing comparisons, a rotation of 0°20'15" counter-clockwise was applied to bearings on plans P2 and P3.

**ANNIS, O'SULLIVAN, VOLLEBEKK LTD.**  
14 Concourse Gate, Suite 500  
Nepean, Ont. K2E 7S6  
Phone: (613) 727-0850 / Fax: (613) 727-1079  
Email: Nepean@aovltd.com

Ontario Land Surveyors  
Job No. 24105-23 RG Trdl P/L19 C4 HJ R DI MA



Coordinates are derived from Can-Net 2016 Real Time Network GPS observations referenced to Specified Control Points 01919791338 and 01919871649, MTM Zone 9 (76°30' West Longitude) NAD-83 (original).

Coordinate values are to urban accuracy in accordance with O. Reg. 216/10.

.01919791338	Northing	5006055.96	Eastings	346140.91
.01919871649	Northings	5007189.87	Eastings	372435.05
.Point A	Northings		Eastings	
.Point B	Northings		Eastings	

Caution: Coordinates cannot, in themselves, be used to re-establish corners or boundaries shown on this plan.



Rural Residential

William Mooney Road

Committee of Adjustment  
 Received / Reçu le  
 2024-01-05  
 City of Ottawa / Ville d'Ottawa  
 Comité de dérogation

Hwy 417

- █ Severed
- █ Retained
- █ Key Map
- Well
- Septic

