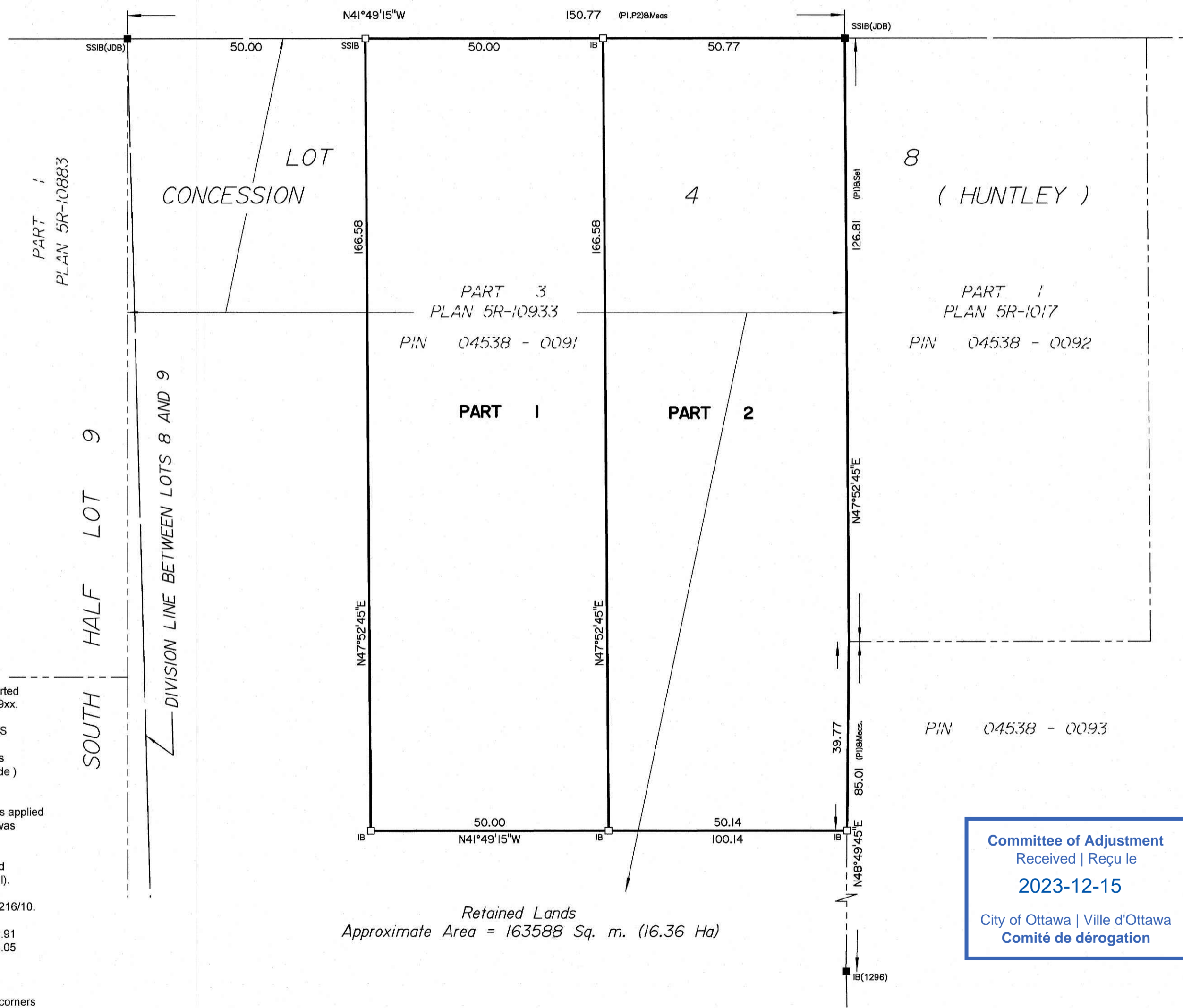
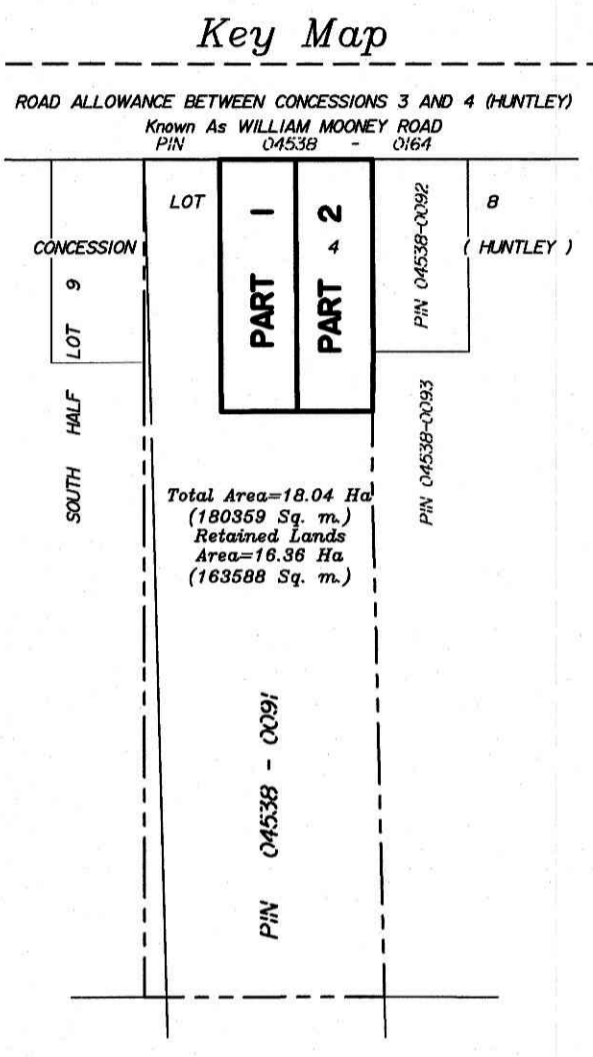


ROAD ALLOWANCE BETWEEN CONCESSIONS 3 AND 4 (HUNTLEY)
Known As WILLIAM MOONEY ROAD

PIN 04538 - 0164



Distances shown on this plan are ground distances and can be converted to grid distances by multiplying by the combined scale factor of 0.9999xx.

Bearings are grid, derived from Can-Net 2016 Real Time Network GPS observations on reference points A and B, shown hereon, having a bearing of Nxx°xx'xx\"/>

For bearing comparisons, a rotation of 0°20'15\"/>

Coordinates are derived from Can-Net 2016 Real Time Network GPS observations referenced to Specified Control Points 01919791338 and 01919871649, MTM Zone 9 (76°30' West Longitude) NAD-83 (original).

Coordinate values are to urban accuracy in accordance with O. Reg. 216/10.

.01919791338	Northing	5006055.96	Easting	346140.91
.01919871649	Northing	5007189.87	Easting	372435.05
. Point A	Northing		Easting	
. Point B	Northing		Easting	

Caution: Coordinates cannot, in themselves, be used to re-establish corners or boundaries shown on this plan.

Retained Lands
Approximate Area = 163588 Sq. m. (16.36 Ha)

I REQUIRE THIS PLAN TO BE DEPOSITED UNDER THE LAND TITLES ACT.

DATE: _____

T. HARTWICK
ONTARIO LAND SURVEYOR

PLAN 4R-

RECEIVED AND DEPOSITED

DATE: _____

REPRESENTATIVE FOR
LAND REGISTRAR FOR THE
LAND TITLES DIVISION OF
OTTAWA-CARLETON NO. 4.

SCHEDULE

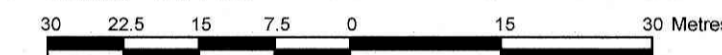
AREA (Sq.m.)	PART	LOT	CONCESSION	PIN
8327.2	1	PART OF 8	4 (HUNTLEY)	PART OF 04538-0091
8444.0	2			

PLAN OF SURVEY OF

**PART OF LOT 8
CONCESSION 4
Geographic Township of Huntley
CITY OF OTTAWA**

Surveyed by Annis, O'Sullivan, Vollebek Ltd.

Scale 1 : 750



Metric

DISTANCES AND COORDINATES SHOWN ON THIS PLAN ARE IN METRES AND CAN BE CONVERTED TO FEET BY DIVIDING BY 0.3048.

Surveyor's Certificate

I CERTIFY THAT:

- This survey and plan are correct and in accordance with the Surveys Act, the Surveyors Act and the Land Titles Act and the regulations made under them.
- The survey was completed on the ___ day of _____, 2023.

Date _____

T. Hartwick
Ontario Land Surveyor

This plan of survey relates to AOLS Plan Submission Form Number V-

Notes & Legend

- Denotes Survey Monument Planted
- " Survey Monument Found
- SIB " Standard Iron Bar
- SSIB " Short Standard Iron Bar
- IB " Iron Bar
- (WIT) " Witness
- (AOG) " Annis, O'Sullivan, Vollebek Ltd.
- Meas. " Measured
- (P1) " Plan 4R-10933
- (P2) " Plan 5R-1017

Committee of Adjustment
Received | Reçu le
2023-12-15

City of Ottawa | Ville d'Ottawa
Comité de dérogation

ANNIS, O'SULLIVAN, VOLLEBEK LTD.
14 Concourse Gate, Suite 500
Nepean, Ont. K2E 7S6
Phone: (613) 727-0850 / Fax: (613) 727-1079
Email: Nepean@avold.com



Rural Residential

Vacant

Rural Residential

Committee of Adjustment
Received | Reçu le

2024-01-05

City of Ottawa | Ville d'Ottawa
Comité de dérogation

Unevaluated
Wetland (as per
GeoOttawa)

Rural Residential

Potential Rural
Residential

Severed
Retained

Hwy 417

voie Sentinel
Ch. William Mooney Rd

