

METRIC DISTANCES SHOWN ON THIS PLAN ARE IN METRES AND CAN BE CONVERTED TO FEET BY DIVIDING BY 0.3048

SCHEDULE				
PART	LOT	CONCESSION	PIN	Area
1	PART OF LOT 15	3	PART OF PIN 04538-1085	0.054 ha
2				0.582 ha

PART 1, SUBJECT TO EASEMENTS OC2117895 & OC2534676.

I REQUIRE THIS PLAN TO BE DEPOSITED UNDER THE LAND TITLES ACT.

PLAN 4R- RECEIVED AND DEPOSITED

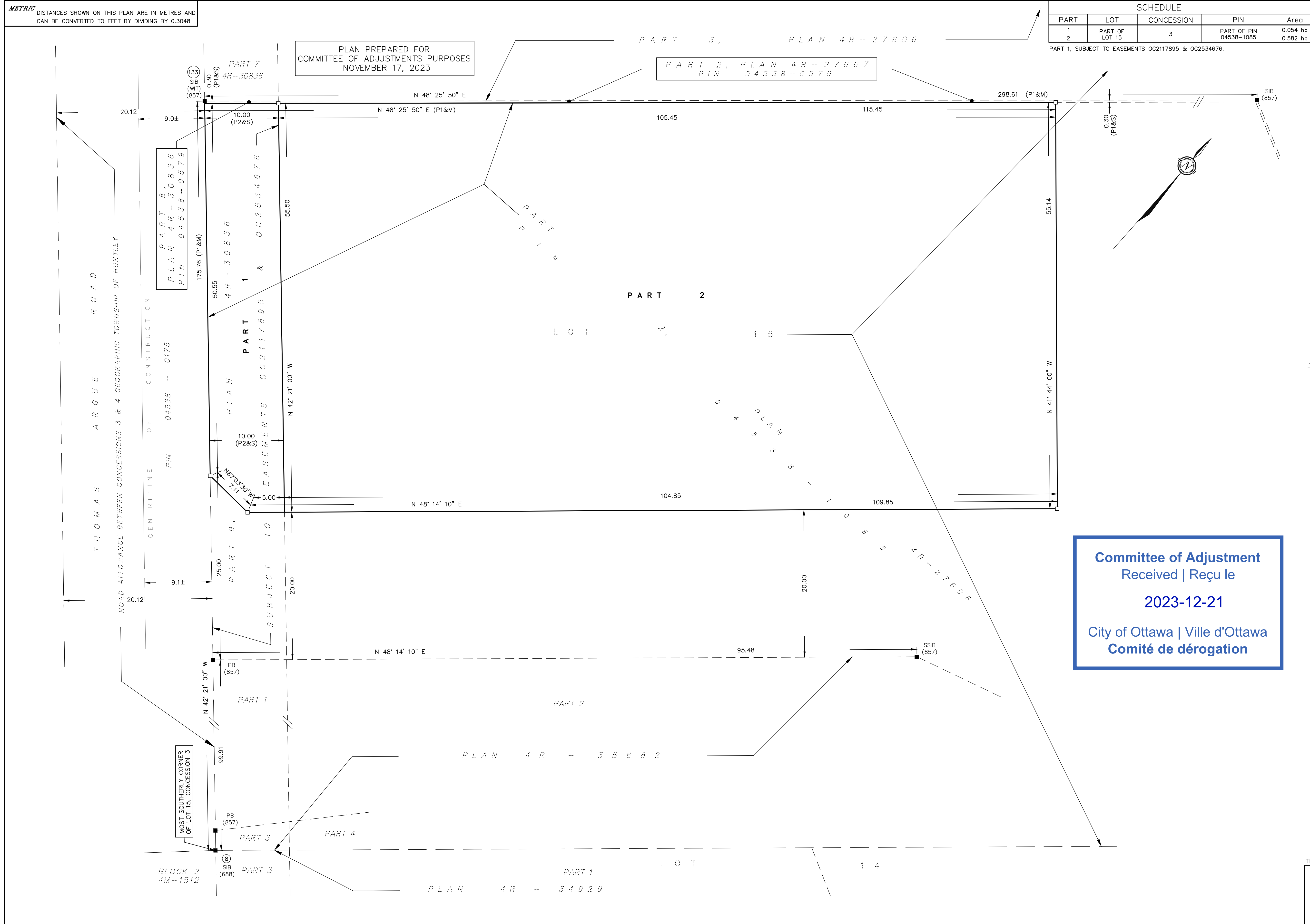
DATE _____ DATE _____

LAND REGISTRAR FOR THE LAND TITLES DIVISION OF OTTAWA - CARLETON (N° 4)

JOHN H. GUTRI, O.L.S.

PLAN PREPARED FOR COMMITTEE OF ADJUSTMENTS PURPOSES NOVEMBER 17, 2023

PART 2, PLAN 4R-27607
PIN 04538-0579



PLAN OF SURVEY OF PART OF LOT 15 CONCESSION 3 GEOGRAPHIC TOWNSHIP OF HUNTLEY CITY OF OTTAWA



FAIRHALL, MOFFATT & WOODLAND LIMITED
ONTARIO LAND SURVEYORS

- NOTES**
- BEARINGS ARE GRID, DERIVED FROM PLAN 4M-1512 AND 4R-27606, POINTS (8) AND (133) HAVING A RESULTANT BEARING OF N 42°21'00\" W, AND ARE REFERRED TO THE CENTRAL MERIDIAN, 76°30' W LONGITUDE MTM ZONE 9, (NAD83 ORIGINAL).
 - DISTANCES ARE GROUND AND CAN BE CONVERTED TO GRID BY MULTIPLYING BY THE COMBINED SCALE FACTOR 0.999905.
 - ALL FOUND SURVEY MONUMENTS ARE STAMPED (857) UNLESS NOTED OTHERWISE.

- LEGEND**
- - SURVEY MONUMENT SET
 - - SURVEY MONUMENT FOUND
 - SIB - STANDARD IRON BAR
 - SSIB - SHORT STANDARD IRON BAR
 - IB - IRON BAR
 - RB - ROCK BAR
 - PB - PLASTIC BAR
 - (WIT) - WITNESS
 - (P1) - PLAN 4R-27607
 - (P2) - PLAN 4R-30836
 - (857) - FAIRHALL, MOFFATT & WOODLAND LIMITED, O.L.S.
 - (688) - C.D COPELAND, OLS
 - PIN - PROPERTY IDENTIFIER NUMBER
 - (123) - POINT IDENTIFICATION NUMBER

Committee of Adjustment
 Received | Reçu le
2023-12-21
 City of Ottawa | Ville d'Ottawa
 Comité de dérogation

COORDINATES WERE DERIVED FROM PLAN 4M-1512 AND 4R-27606 AND ARE, MTM ZONE 9, NAD83 ORIGINAL.

COORDINATES HAVE BEEN DETERMINED TO AN URBAN ACCURACY IN ACCORDANCE WITH SECTION 14(2) OF O. REG 216/10.

POINT ID	NORTHING	EASTING
8	5,020,352.91	341,546.51
133	5,020,482.79	341,428.12

COORDINATES CANNOT IN THEMSELVES BE USED TO RE-ESTABLISH CORNERS OR BOUNDARIES SHOWN ON THIS PLAN.

SURVEYOR'S CERTIFICATE

I CERTIFY THAT:

- THIS SURVEY AND PLAN ARE CORRECT AND IN ACCORDANCE WITH THE SURVEYS ACT, THE SURVEYORS ACT, THE LAND TITLES ACT AND THE REGULATIONS MADE UNDER THEM.
- THE SURVEY WAS COMPLETED ON _____

DATE _____ JOHN H. GUTRI
ONTARIO LAND SURVEYOR

THIS PLAN OF SURVEY RELATES TO AOLS PLAN SUBMISSION FORM NUMBER _____

Fairhall Moffatt & Woodland LIMITED ONTARIO LAND SURVEYORS OTTAWA KANATA	JOB No. AD30600 E 341471 N 5020493
	REFERENCE No. 139-3 Huntley S:\085\ad30600.dwg\ rp_ad306.dwg (rr)

METRIC DISTANCES SHOWN ON THIS PLAN ARE IN METRES AND CAN BE CONVERTED TO FEET BY DIVIDING BY 0.3048

SCHEDULE				
PART	LOT	CONCESSION	PIN	Area
1	PART OF LOT 15	3	PART OF PIN 04538-1085	0.054 ha
2				0.582 ha

PART 1, SUBJECT TO EASEMENTS OC2117895 & OC2534676.

I REQUIRE THIS PLAN TO BE DEPOSITED UNDER THE LAND TITLES ACT.

PLAN 4R- RECEIVED AND DEPOSITED

DATE _____ DATE _____

LAND REGISTRAR FOR THE LAND TITLES DIVISION OF OTTAWA - CARLETON (N° 4)

JOHN H. GUTRI, O.L.S.

PLAN PREPARED FOR COMMITTEE OF ADJUSTMENTS PURPOSES NOVEMBER 17, 2023

PART 2, PLAN 4R-27607
PIN 04538-0579

LANDS TO BE SEVERED
6,360 sq. m.
(0.636 ha)

LANDS TO BE RETAINED
1,311,915 sq. m.
(131.1 ha)

PLAN OF SURVEY OF PART OF LOT 15 CONCESSION 3 GEOGRAPHIC TOWNSHIP OF HUNTLEY CITY OF OTTAWA

SCALE 1 : 250

FAIRHALL, MOFFATT & WOODLAND LIMITED
ONTARIO LAND SURVEYORS

- NOTES**
- BEARINGS ARE GRID, DERIVED FROM PLAN 4M-1512 AND 4R-27606, POINTS (8) AND (133) HAVING A RESULTANT BEARING OF N 42°21'00" W, AND ARE REFERRED TO THE CENTRAL MERIDIAN, 76°30' W LONGITUDE MTM ZONE 9, (NAD83 ORIGINAL).
 - DISTANCES ARE GROUND AND CAN BE CONVERTED TO GRID BY MULTIPLYING BY THE COMBINED SCALE FACTOR 0.999905.
 - ALL FOUND SURVEY MONUMENTS ARE STAMPED (857) UNLESS NOTED OTHERWISE.

- LEGEND**
- - SURVEY MONUMENT SET
 - - SURVEY MONUMENT FOUND
 - SIB - STANDARD IRON BAR
 - SSIB - SHORT STANDARD IRON BAR
 - IB - IRON BAR
 - RB - ROCK BAR
 - PB - PLASTIC BAR
 - (WIT) - WITNESS
 - (P1) - PLAN 4R-27607
 - (P2) - PLAN 4R-30836
 - (857) - FAIRHALL, MOFFATT & WOODLAND LIMITED, O.L.S.
 - (688) - C.D COPELAND, OLS
 - PIN - PROPERTY IDENTIFIER NUMBER
 - (123) - POINT IDENTIFICATION NUMBER

CONSENT SKETCH
1500 THOMAS ARGUE ROAD
NOVATECH MARKUP - NOVEMBER 22, 2023
NOVATECH FILE NO. 102085-15

COORDINATES WERE DERIVED FROM PLAN 4M-1512 AND 4R-27606 AND ARE, MTM ZONE 9, NAD83 ORIGINAL.

COORDINATES HAVE BEEN DETERMINED TO AN URBAN ACCURACY IN ACCORDANCE WITH SECTION 14(2) OF O.REG 216/10.

POINT ID	NORTHING	EASTING
8	5,020,352.91	341,546.51
133	5,020,482.79	341,428.12

COORDINATES CANNOT IN THEMSELVES BE USED TO RE-ESTABLISH CORNERS OR BOUNDARIES SHOWN ON THIS PLAN.

SURVEYOR'S CERTIFICATE

I CERTIFY THAT:

- THIS SURVEY AND PLAN ARE CORRECT AND IN ACCORDANCE WITH THE SURVEYS ACT, THE SURVEYORS ACT, THE LAND TITLES ACT AND THE REGULATIONS MADE UNDER THEM.
- THE SURVEY WAS COMPLETED ON _____

DATE _____ JOHN H. GUTRI
ONTARIO LAND SURVEYOR

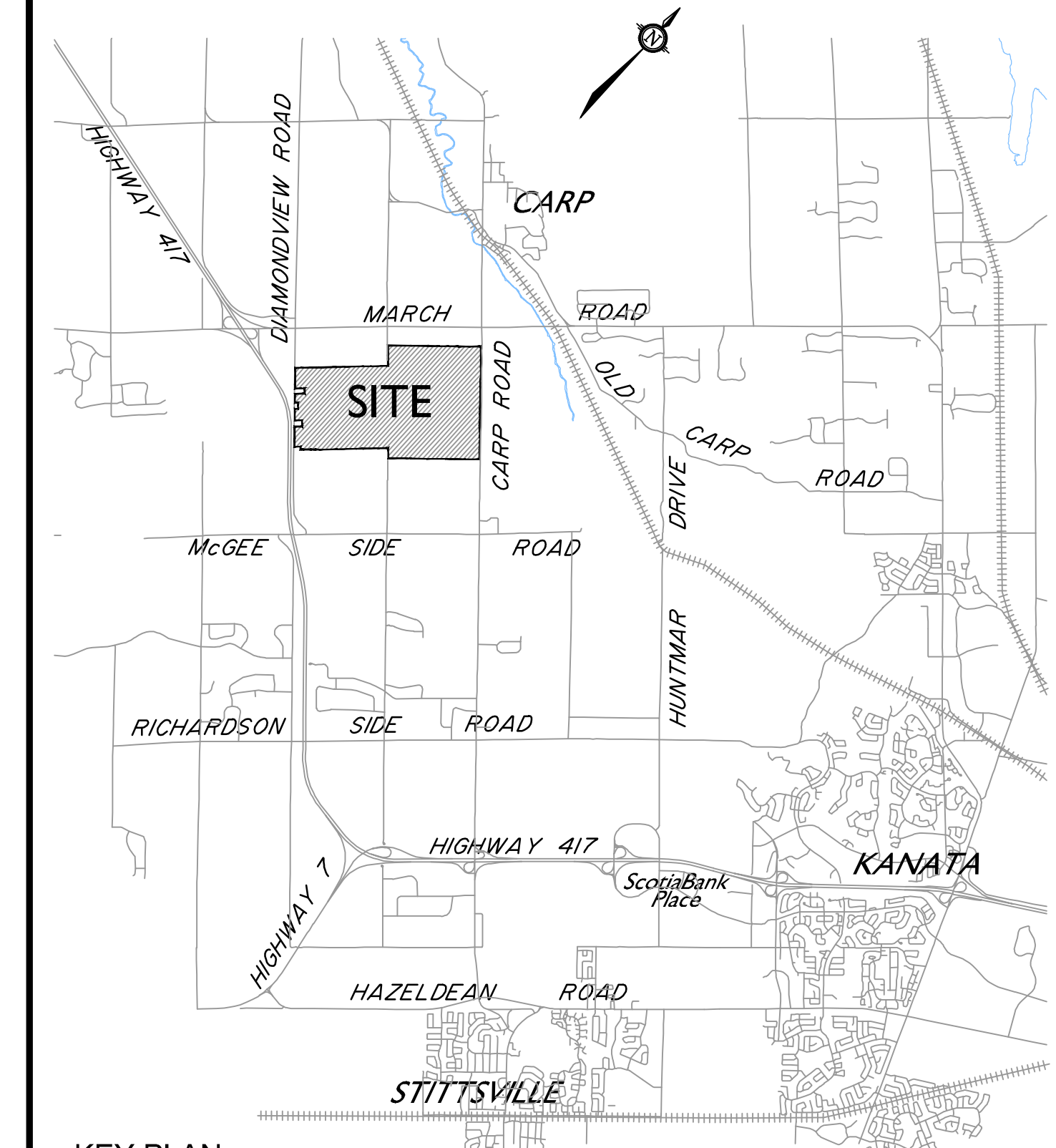
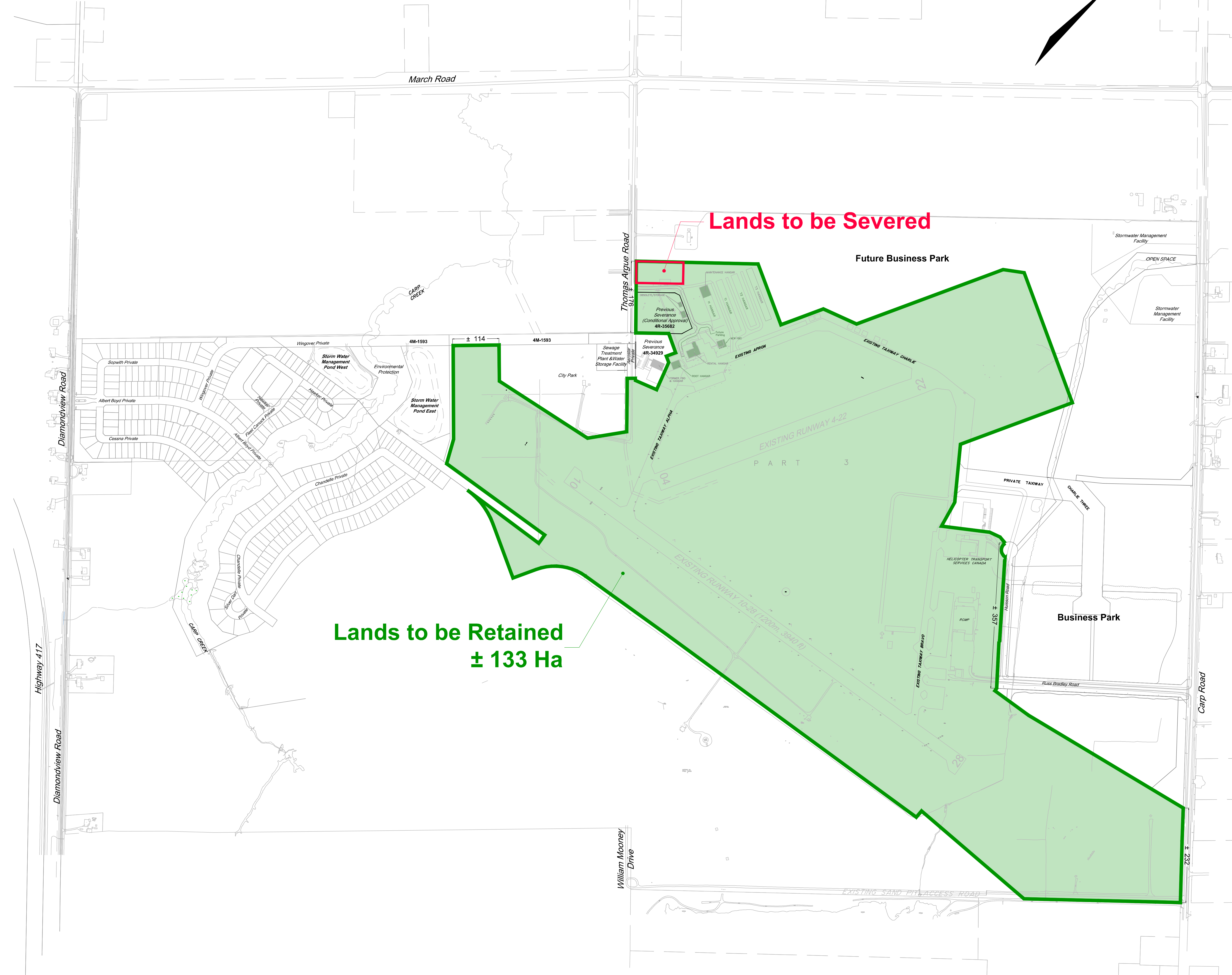
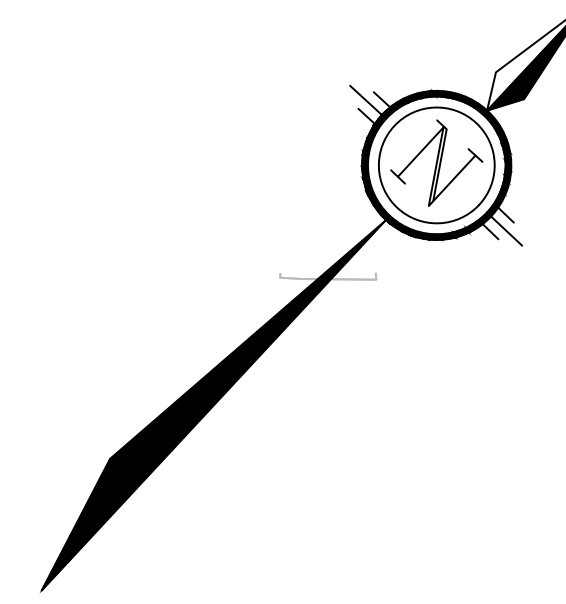
THIS PLAN OF SURVEY RELATES TO AOLS PLAN SUBMISSION FORM NUMBER _____

Fairhall Moffatt & Woodland LIMITED ONTARIO LAND SURVEYORS		JOB No.	AD30600
		REFERENCE No.	139-3 Huntley
OTTAWA KANATA		S:\085\ad30600.dwg	rp_ad306.dwg (rr)

LEGEND

- Lands to be Retained
- Lands to be Severed

Committee of Adjustment
 Received | Reçu le
 Revised | Modifié le : 2024-01-25
 City of Ottawa | Ville d'Ottawa
 Comité de dérogation



KEY PLAN
NOT TO SCALE

WEST CAPITAL AIRPARK

RETAINED LANDS - CORE AIRPORT



SCALE
1 : 4000

	I. PREPARED FOR COMMITTEE OF ADJUSTMENT	JAN 17/24	MV
No.	REVISION	DATE	BY

<p style="font-size: 8px;"> Engineers, Planners & Landscape Architects Suite 200, 240 Michael Cowland Drive Ottawa, Ontario, Canada K2M 1P6 Telephone: (613) 254-9643 Facsimile: (613) 254-5867 Website: www.novatech-eng.com </p>	DATE JANUARY, 2024
	PROJECT No. 102085
	DRAWING No. 102085-CoreAirport

M:\2024\102085-CAD\Planning\Figures\102085-CoreAirport-SEV\Fig_CORE_102085-CAD-102085-CoreAirport-SEV.dwg, CORE, Jan 24, 2024, 4:13pm, vmls