

GLYNN AVENUE (Formerly Glin Avenue)
PIN 04207 - 0459

Committee of Adjustment
Received | Reçu le
2024-01-19
City of Ottawa | Ville d'Ottawa
Comité de dérogation

SCHEDULE			
PART	LOT	PLAN	PIN
1	PART OF LOTS 51 AND 52	291	ALL OF 04207-0215
2	PART OF LOT 52		

PLAN OF SURVEY OF

**LOT 52 AND PART OF LOT 51
REGISTERED PLAN 291
CITY OF OTTAWA**

Surveyed by Annis, O'Sullivan, Vollebakk Ltd.

Scale 1 : 100
4 3 2 1 0 2 4 Metres

The intended plot size of the plan is 914 mm in width by 610 mm in height when plotted at a scale of 1:100.

Metric
DISTANCES AND COORDINATES SHOWN ON THIS PLAN ARE IN METRES AND CAN BE CONVERTED TO FEET BY DIVIDING BY 0.3048.

Surveyor's Certificate

I CERTIFY THAT:
1. This survey and plan are correct and in accordance with the Surveys Act, the Surveyors Act and the Land Titles Act and the regulations made under them.
2. The survey was completed on the 3rd day of January, 2024.

January 4, 2024
Date
E. H. Herweyer
E. H. Herweyer
Ontario Land Surveyor

This plan relates to AOLS Plan Submission form number: V-69132

Notes & Legend

- Denotes
- * Survey Monument Planted
 - * Survey Monument Found
 - SIB * Standard Iron Bar
 - SSIB * Short Standard Iron Bar
 - IB * Iron Bar
 - (WIT) * Witness
 - Meas. * Measured
 - (AOG) * Annis, O'Sullivan, Vollebakk Ltd.
 - (P1) * Registered Plan 291
 - (P2) * (1319) Plan May 11, 1984
 - (P3) * Plan 4R-30504
 - (P4) * (AOG) Plan July 12, 1985
 - (P5) * Plan 4R-19657
 - (P6) * (725) Plan August 18, 1980
 - (Deed) * Inst. N381306
 - IRW * Interlock Retaining Wall
 - BF * Board Fence
 - C/L * Centreline
 - ICF * Insulated Concrete Form
 - WTL * Wall To Line

Distances shown on this plan are ground distances and can be converted to grid distances by multiplying by the combined scale factor of 0.99994.

Bearings are grid, derived from Can-Net 2016 Real Time Network GPS observations on reference points A and B, shown hereon, having a bearing of N83°34'30"E and are referenced to Specified Control Points 01919680105 and 019198434761, MTM Zone 9 (76°30' West Longitude) NAD-83 (original).

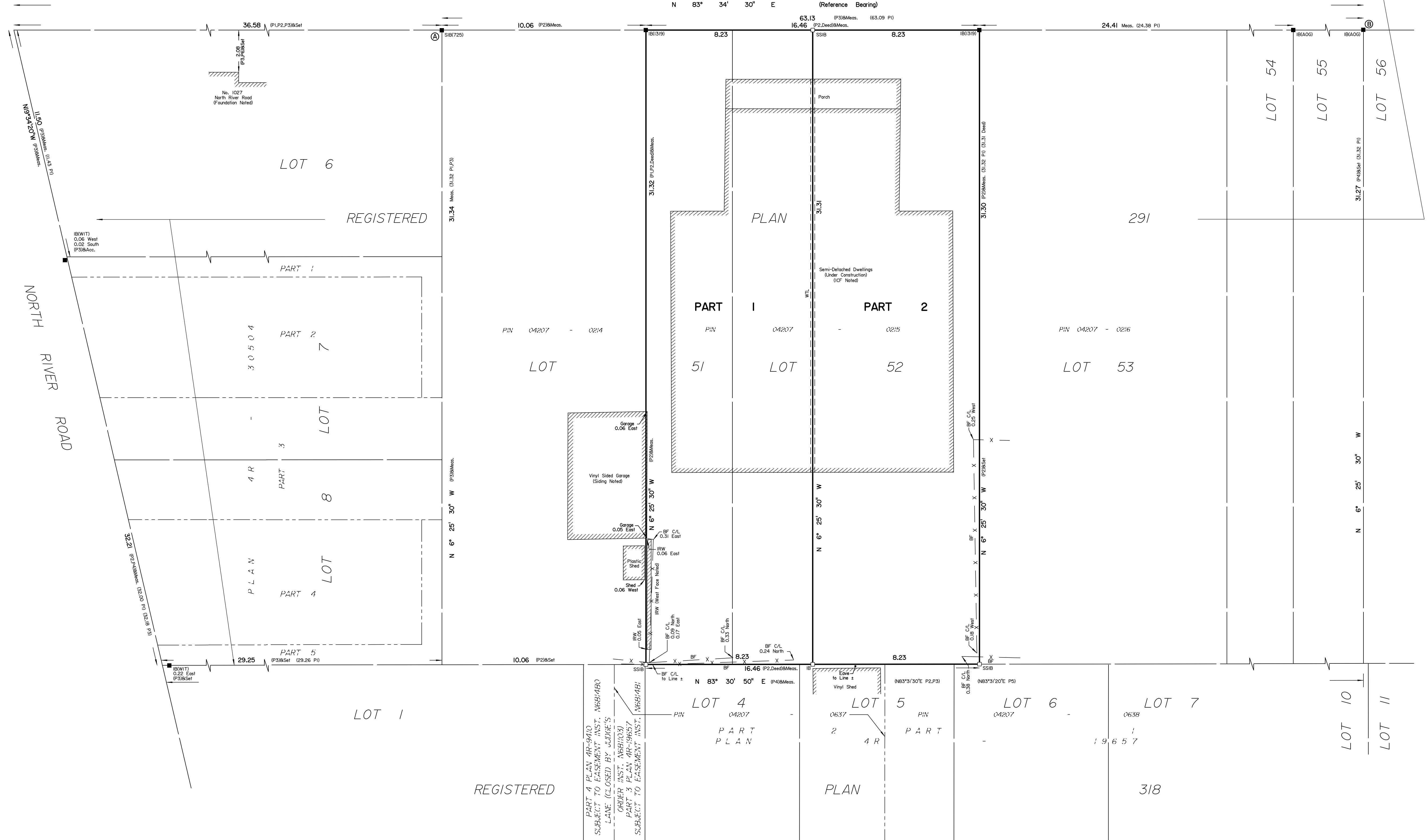
For bearing comparisons, a rotation of 0°00'50" clockwise was applied to bearings on P2 & P4.

Coordinates are derived from Can-Net 2016 Real Time Network GPS observations referenced to Specified Control Points 01919680105 and 01918434761, MTM Zone 9 (76°30' West Longitude) NAD-83 (original).

Coordinate values are to urban accuracy in accordance with O. Reg. 216/10.

- .01919680105 Northing 5024915.16 Easting 373971.65
- .019198434761 Northing 5036178.12 Easting 372436.11
- .Point A Northing 5032062.28 Easting 370073.61
- .Point B Northing 5032069.34 Easting 370136.34

Caution: Coordinates cannot, in themselves, be used to re-establish corners or boundaries shown on this plan.



PART 4 PLAN 4R-9410
SUBJECT TO EASEMENT INST. ANNS/O
SUBJECT TO EASEMENT INST. ANNS/O
SUBJECT TO EASEMENT INST. ANNS/O
SUBJECT TO EASEMENT INST. ANNS/O
SUBJECT TO EASEMENT INST. ANNS/O
SUBJECT TO EASEMENT INST. ANNS/O