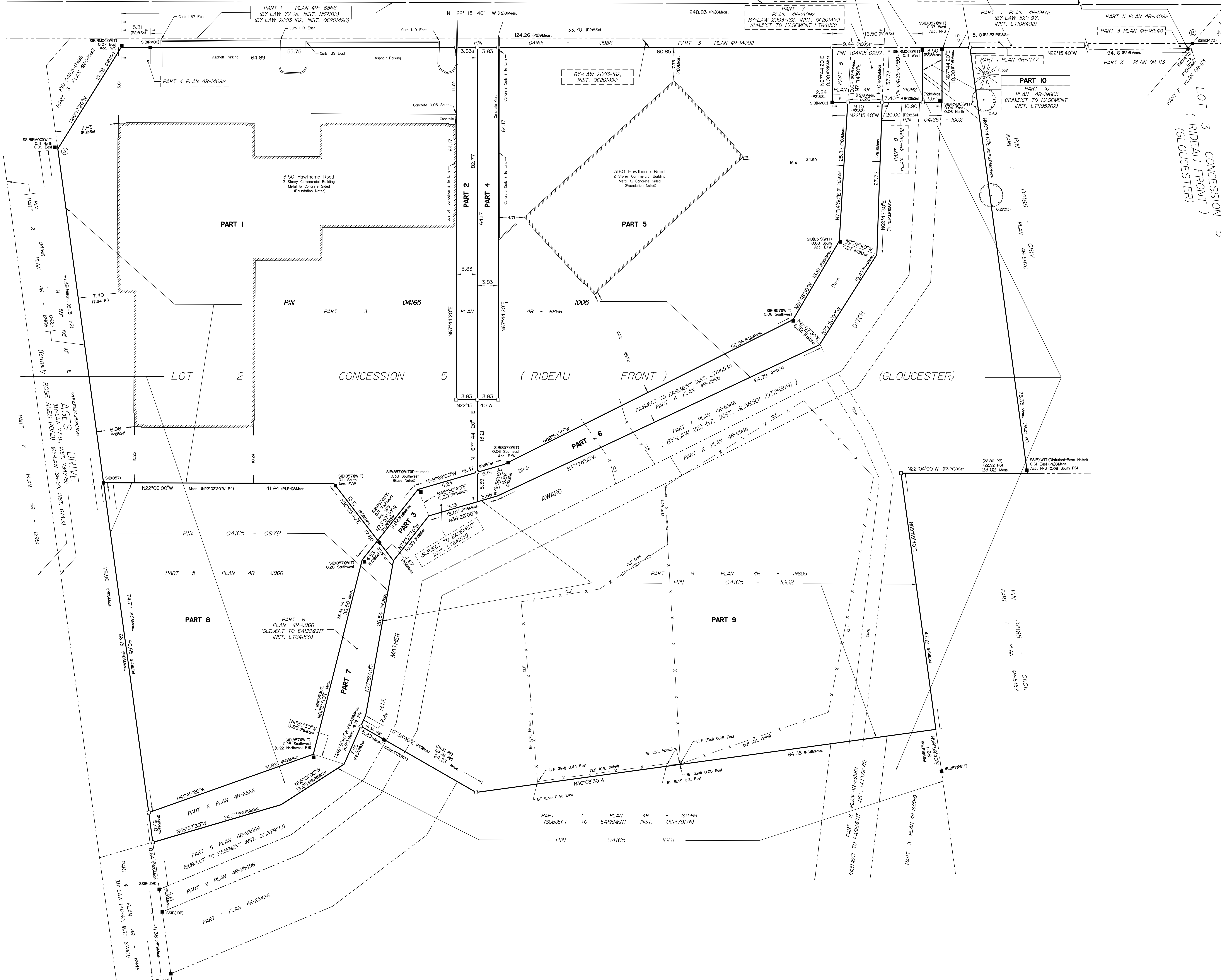


Committee of Adjustment  
Received | Reçu le  
Revised | Modifié le : 2024-01-31  
City of Ottawa | Ville d'Ottawa  
Comité de dérogation

HAWTHORNE ROAD (REGIONAL ROAD 32)

ROAD ALLOWANCE BETWEEN CONCESSION 5 (RIDEAU FRONT) & CONCESSION 6 (RIDEAU FRONT)



SCHEDULE				
AREA (Sq.m)	PART	LOT	CONCESSION	PIN
5638.0	1			
245.8	2			
103.2	3			
245.8	4			
2799.5	5			
656.2	6	2	5 (GLOUCESTER)	ALL OF 04165-1005
459.2	7			
2163.3	8			
7478.8	9			
35.0	10			

Parts 3, 6 and 7: Subject to easement, Inst. LT641531.  
Part 10: Subject to easement, Inst. LT1195262.

DRAFT PLAN OF SURVEY OF

**PART OF LOT 2  
CONCESSION 5  
(RIDEAU FRONT)**  
Geographic Township of Gloucester  
CITY OF OTTAWA  
Surveyed by Annis, O'Sullivan, Vollebek Ltd.



Metric  
DISTANCES AND COORDINATES SHOWN ON THIS PLAN  
ARE IN METRES AND CAN BE CONVERTED TO FEET BY  
DIVIDING BY 0.3048.

**Surveyor's Certificate**  
I CERTIFY THAT:  
1. This survey and plan are correct and in accordance with the Surveyors Act, the Surveyors Act and the Land Titles Act and the regulations made under them.  
2. The survey was completed on the \_\_\_ day of \_\_\_\_\_, 2023.

Date: \_\_\_\_\_  
V. Andrew Sheip  
Ontario Land Surveyor

This plan of survey relates to AOLS Plan Submission Form Number V-\_\_\_\_\_.

- Notes & Legend**
- Denotes
  - - Survey Monument Planted
  - - Survey Monument Found
  - SIB - Standard Iron Bar
  - SSIB - Short Standard Iron Bar
  - IB - Iron Bar
  - W - Witness
  - (WIT) - Witness
  - Meas. - Measured
  - (AOG) - Annis, O'Sullivan, Vollebek Ltd.
  - (P) - Ottawa Carleton Condominium Plan 485
  - (P2) - Plan 4R-14092
  - (P3) - Plan 4R-6946
  - (P4) - Plan 4R-6866
  - (P5) - Plan 4R-25496
  - (P6) - Plan 4R-19605
  - (P7) - Plan 4R-18544
  - (P8) - Plan 4R-23589
  - CLF - Chain Link Fence
  - BF - Board Fence
  - GF - Gate
  - Ø - Diameter
  - C/L - Centreline
  - UP - Utility Pole
  - - Deciduous Tree
  - ★ - Coniferous Tree

Distances shown on this plan are ground distances and can be converted to grid distances by multiplying by the combined scale factor of 0.999948.

Bearings are grid, derived from Can-Net 2016 Real Time Network GPS observations on reference points A and B, shown hereon, having a bearing of N26°19'20"W and are referenced to Specified Control Points 01919680105 and 019198434761, MTM Zone 9 (76°30' West Longitude) NAD-83 (original).

Coordinates are derived from Can-Net 2016 Real Time Network GPS observations referenced to Specified Control Points 01919680105 and 01918434761, MTM Zone 9 (76°30' West Longitude) NAD-83 (original).

Coordinate values are to urban accuracy in accordance with O. Reg. 216/10.

- . 01919680105 Northing 5024915.16 Easting 373971.65
- . 019198434761 Northing 5026118.12 Easting 372436.11
- . Point A Northing 5027691.37 Easting 374942.71
- . Point B Northing 5027457.43 Easting 375058.43

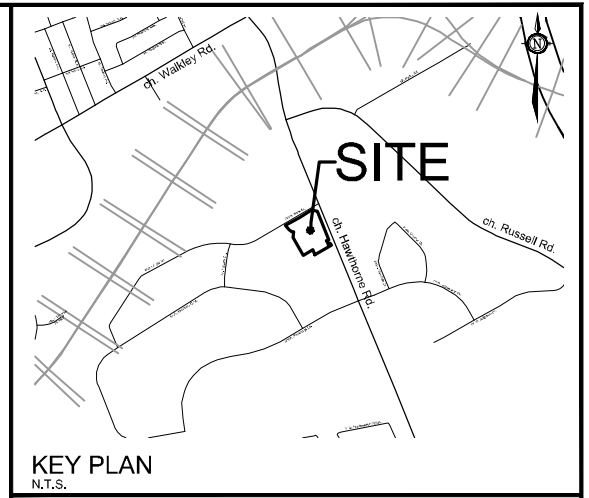
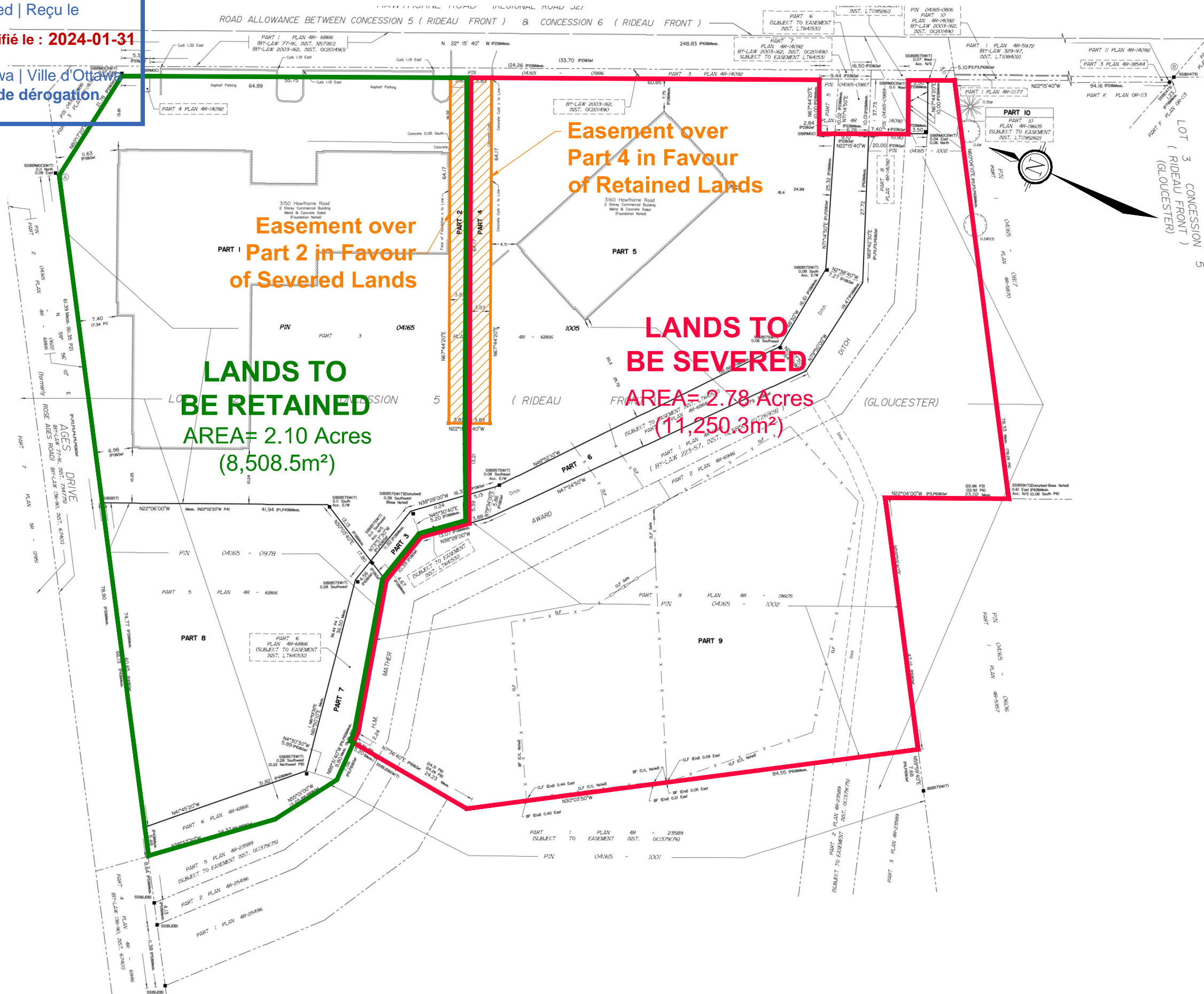
Caution: Coordinates cannot, in themselves, be used to re-establish corners or boundaries shown on this plan.



Committee of Adjustment  
Received | Reçu le

Revised | Modifié le : 2024-01-31

City of Ottawa | Ville d'Ottawa  
Comité de dérogation

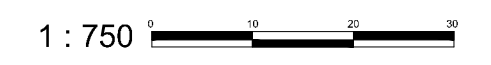


KEY PLAN  
N.T.S.

# CONSENT APPLICATION #1

3150-3170  
HAWTHORNE ROAD

PART OF LOT 2,  
CONCESSION 5 (RIDEAU FRONT)  
Geographic Township of Gloucester  
CITY OF OTTAWA



No.	REVISION	DATE	BY
1.	ISSUED FOR CONSENT APPLICATION	DEC 06/23	AT

**NOVATECH**  
Engineers, Planners & Landscape Architects  
Suite 200, 240 Michael Cowpland Drive  
Ottawa, Ontario, Canada K2M 1P6  
Telephone (613) 254-9643  
Facsimile (613) 254-5857  
Website www.novatech-eng.com

ISSUED	DECEMBER, 2023
PROJECT No.	123057
DRAWING No.	123057-SEV

M:\2023\123057\CAD\Planning\Figures\123057-SEV.dwg, SEV, Nov 02, 2023 - 11:26am, wslloss

Committee of Adjustment  
Received | Reçu le

Revised | Modifié le : 2024-01-31

City of Ottawa | Ville d'Ottawa  
Comité de dérogation

**LANDS TO  
BE SEVERED**  
AREA= 0.06 Acres  
(245.8m<sup>2</sup>)

**LANDS TO  
BE RETAINED**  
AREA= 4.82 Acres  
(19,513.0m<sup>2</sup>)



# CONSENT APPLICATION #2

3150-3170  
HAWTHORNE ROAD

PART OF LOT 2,  
CONCESSION 5 (RIDEAU FRONT)  
Geographic Township of Gloucester  
CITY OF OTTAWA

1 : 750

No.	REVISION	DATE	BY
1.	ISSUED FOR CONSENT APPLICATION	DEC 06/23	AT

 Engineers, Planners & Landscape Architects Suite 200, 240 Michael Cowpland Drive Ottawa, Ontario, Canada K2M 1P6 Telephone (613) 254-9643 Facsimile (613) 254-5857 Website www.novatech-eng.com	ISSUED DECEMBER, 2023
	PROJECT No. 123057
	DRAWING No. 123057-SEV

M:\2023\123057\CAD\Planning\Figures\123057-SEV.dwg, SEV (Easement), Nov.02, 2023 - 11:26am, wslloss