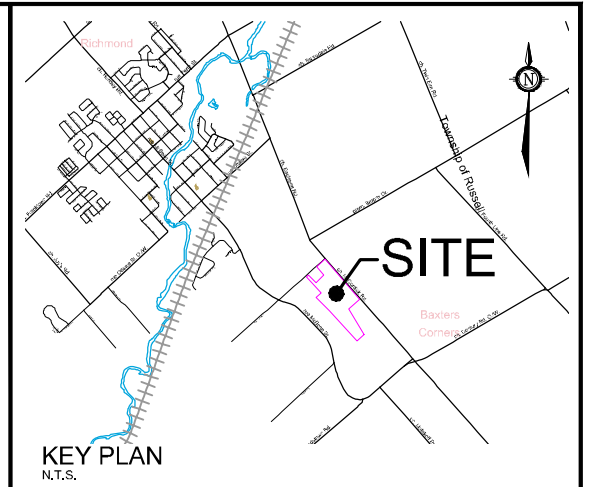
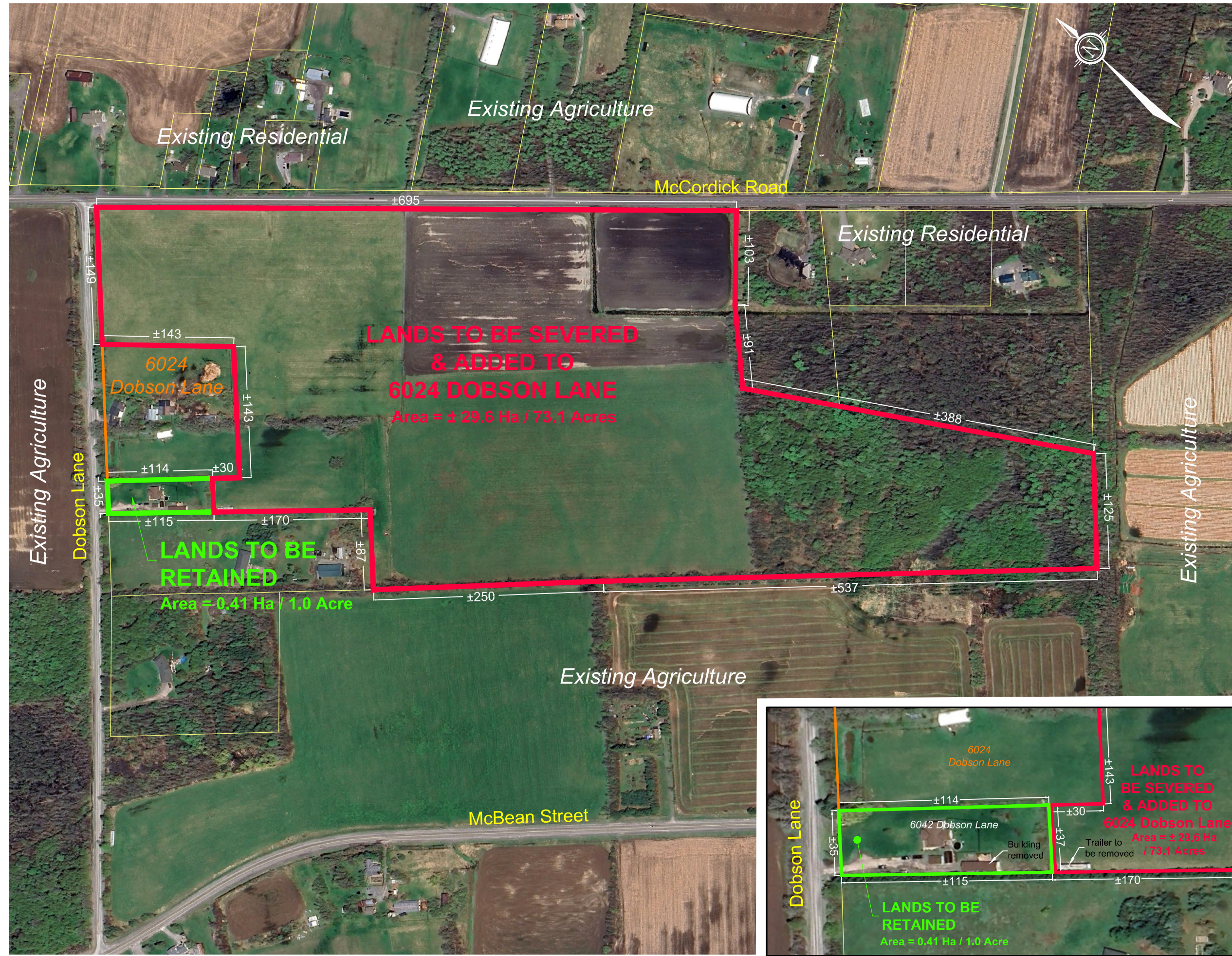


M:\2024\124007\CAD\Planning\Figures\124007-SEV.dwg, SEV, Jan 23, 2024 - 3:59pm, wslbss

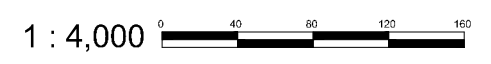


CONSENT APPLICATION

6042 DOBSON LANE

PART LOT 25, CON 1
 Geographic Township of GOULBOURN
 CITY OF OTTAWA

Committee of Adjustment
 Received | Reçu le
2024-02-02
 City of Ottawa | Ville d'Ottawa
 Comité de dérogation



I.	ISSUED FOR CONSENT APPLICATION	JAN 19/24	SBP
No.	REVISION	DATE	BY

<p>Engineers, Planners & Landscape Architects Suite 200, 240 Michael Cowpland Drive Ottawa, Ontario, Canada K2M 1P6</p> <p>Telephone: (613) 254-9643 Facsimile: (613) 254-5867 Website: www.novatech-eng.com</p>	ISSUED	JANUARY, 2024
	PROJECT No.	124007
	DRAWING No.	124007-SEV