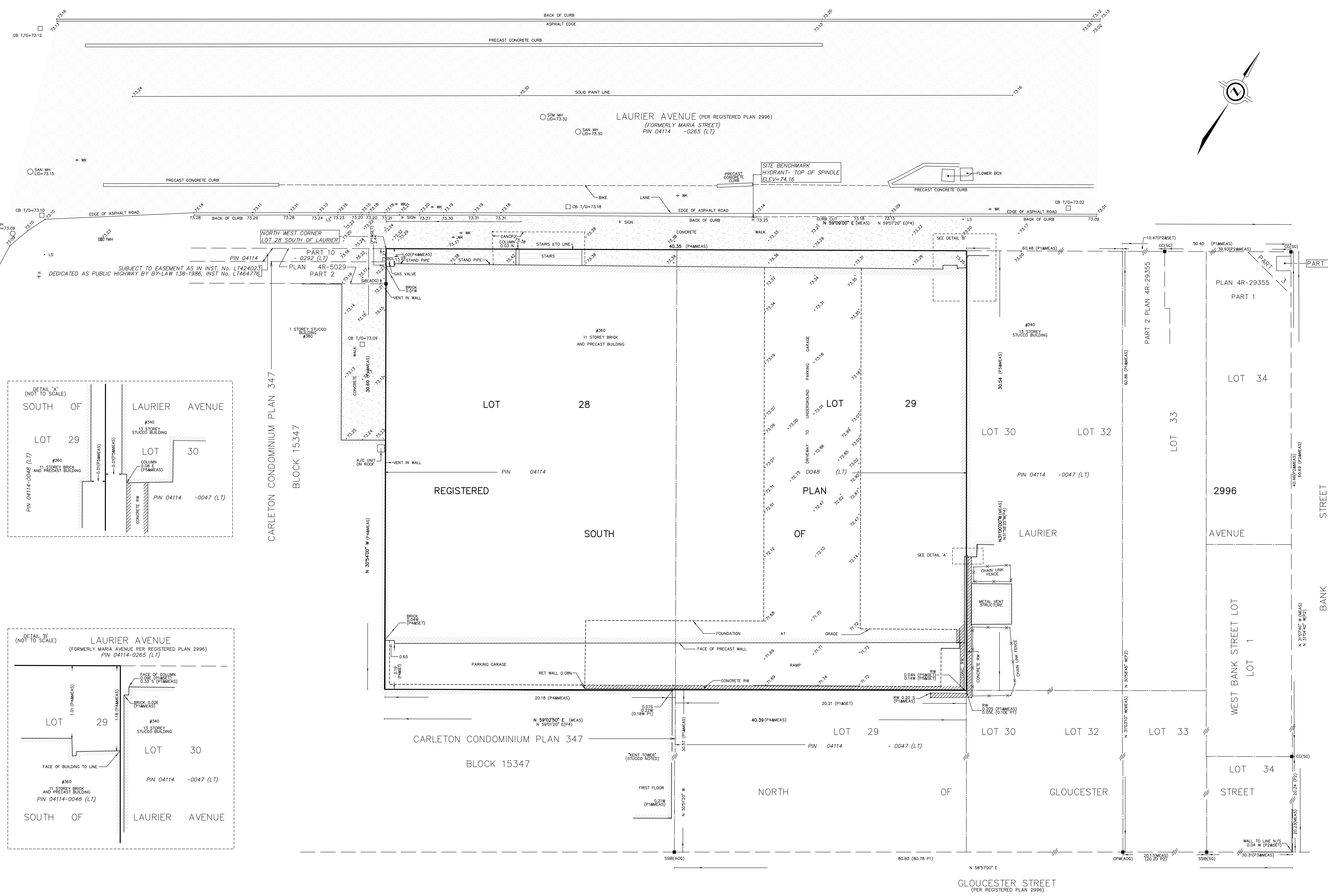


PLAN OF SURVEY OF
LOTS 28 AND 29
REGISTERED PLAN 2996
CITY OF OTTAWA

SCALE 1 : 100
J.D. BARNES LIMITED
© COPYRIGHT 2023
METRIC DISTANCES AND/OR COORDINATES SHOWN ON THIS PLAN ARE IN METRES AND CAN BE CONVERTED TO FEET BY DIVIDING BY 0.3048.

NOTES
BEARINGS ARE MTM GRID, DERIVED FROM GLOBAL NAVIGATION SATELLITE SYSTEM OBSERVATIONS BY REAL TIME NETWORK (RTN), MTM ZONE 9, NAD83 (CSRS) (2010.0). DISTANCES ARE GROUND AND CAN BE CONVERTED TO GRID BY MULTIPLYING BY THE COMBINED SCALE FACTOR OF 0.999933.

- LEGEND**
- DENOTES SURVEY MONUMENT FOUND
 - DENOTES SURVEY MONUMENT SET
 - SSB DENOTES STANDARD IRON BAR
 - SSB DENOTES SHORT STANDARD IRON BAR
 - CC DENOTES CUT CROSS
 - CPW DENOTES CONCRETE PIN AND WASHER
 - MEAS DENOTES MEASURED
 - ADD DENOTES ANNIS, O'SULLIVAN, VOLLEBEKK LTD.
 - SG DENOTES STANTEC GEOMATICS LTD.
 - P1 DENOTES SURVEYOR'S REAL PROPERTY REPORT BY ANNIS, O'SULLIVAN, VOLLEBEKK LTD., O.L.S., DATED NOV.22, 2010.
 - P2 DENOTES PLAN 4R-29355
 - P3 DENOTES PLAN 4R-22556
 - P4 DENOTES SURVEYOR'S REAL PROPERTY REPORT BY FAIRHALL, MOFFATT & WOODLAND, O.L.S., DATED DEC.29, 1998
 - P5 DENOTES SURVEYOR'S REAL PROPERTY REPORT BY FARLEY, SMITH & DENIS SURVEYING LTD., O.L.S., DATED SEP.27, 2011.
 - RW DENOTES RETAINING WALL
- ELEVATIONS**
ELEVATIONS SHOWN ON THIS PLAN ARE RELATED TO GEODETIC DATUM COVD28-78 AND ARE DERIVED FROM THE PUBLISHED BENCH MARK No. 001196303622 HAVING A PUBLISHED ELEVATION OF 73.873 METRES.
- TOPOGRAPHIC LEGEND**
- CB DENOTES CATCH-BASIN
 - GM DENOTES GAS METER
 - MH DENOTES HYDRO MANHOLE
 - TMH DENOTES TELEPHONE MANHOLE
 - SAN MH DENOTES SANITARY MANHOLE
 - STM MH DENOTES STORM MANHOLE
 - LS DENOTES LIGHT STANDARD
 - H DENOTES FIRE HYDRANT
 - WK DENOTES WATER KEY



SURVEYOR'S CERTIFICATE
I CERTIFY THAT:
1. THIS SURVEY AND PLAN ARE CORRECT AND IN ACCORDANCE WITH THE SURVEYS ACT, THE SURVEYORS ACT AND THE REGULATIONS MADE UNDER THEM.
2. THE SURVEY WAS COMPLETED ON MARCH 9, 2023.
MARCH 10, 2023
DATE
C.M. FOX
ONTARIO LAND SURVEYOR

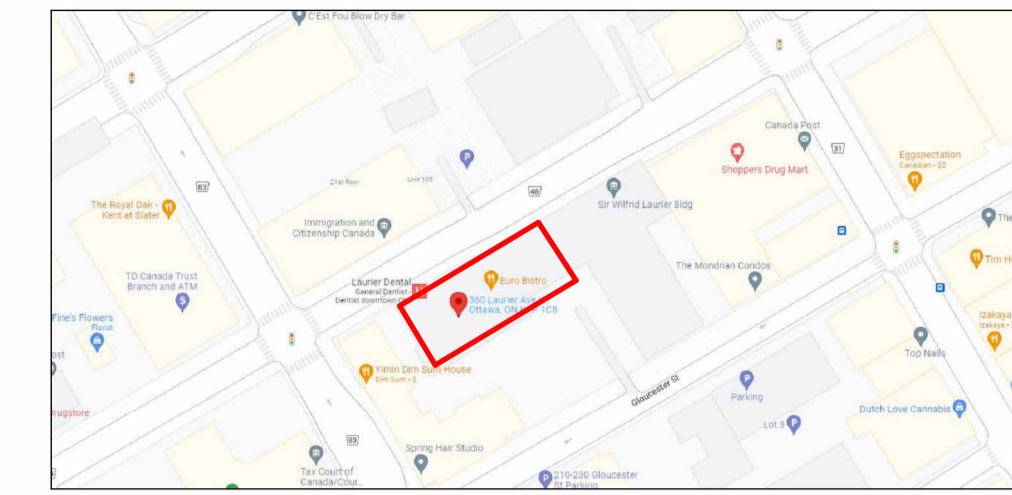
THIS PLAN OF SURVEY RELATES TO AGLS PLAN SUBMISSION FORM NUMBER V-42000.

J.D. BARNES SURVEYING
MAPPING
GIS
LAND INFORMATION SPECIALISTS
62 STAGIE DRIVE, SUITE 103, KANATA, ON K2K 2A9
T: (613) 731-7244 F: (613) 254-8659 www.jdbarnes.com

DRAWN BY: CE	CHECKED BY: CF	REFERENCE NO.: 23-10-013-00
PROF'D: 3/10/23	DATE: 03/10/23	

360 LAURIER AVE W

SITE PLAN APPLICATION - ARCHITECTURAL DRAWINGS



client | client



structural engineers | ingénieur structure



MEP engineers | ingénieur MEP



civil engineers | ingénieur civil



landscape architect | architecte paysagiste

ARCHITECT

Linebox Studio Inc.
 Address: 150 Elgin Street, Level 10, Ottawa, ON, K2P 1L4
 Tel: 613.216.2609
 Architect: Andrew Reeves
 Point of Contact: Josée Anne Provost

STRUCTURAL ENGINEERS

Cleland Jardine Engineering Ltd.
 Address: 580 Terry Fox Drive, Kanata, ON, K2L 4B9
 Tel: 613.591.1533
 Engineer: Bourtos Aoun
 Point of Contact: Sharon Hagen

MECHANICAL ENGINEERS

Smith + Andersen
 Address: 1600 Carling Avenue #530, Ottawa, ON, K1Z 1G3
 Tel: 613.230.1186
 Engineer & Point of Contact: Adrienne Mitani

ELECTRICAL ENGINEERS

Smith + Andersen
 Address: 1600 Carling Avenue #530, Ottawa, ON, K1Z 1G3
 Tel: 613.230.1186
 Engineer: Andre Drauin
 Point of Contact: Josephine Jordan

CIVIL ENGINEERS

LRL Associates Ltd.
 Address: 5430 Canotek Road, Gloucester, ON K1J 9G2
 Tel: 613.842.3434
 Engineer & Point of Contact: Virginia Johnson

LANDSCAPE ARCHITECT

CSW Landscape Architects Limited.
 Address: 319 McRae Avenue, Ottawa, ON K1Z 0B9
 Tel: 613.729.4536
 Architect & Point of Contact: Christian Matteau

ARCHITECTURAL DRAWING LIST

DWG NO.	DRAWING TITLE
A0-000	COVER SHEET
A0-801	SITE PLAN
A2 PLANS	
A2-098	P5 BASEMENT FLOOR PLAN
A2-099	P3 AND P4 BASEMENT FLOOR PLAN
A2-100	P1 AND P2 BASEMENT FLOOR PLAN
A2-101	LEVEL 01 FLOOR PLAN
A2-102	LEVEL 02 FLOOR PLAN
A2-103	LEVELS 03 TO 11 (TYPICAL) FLOOR PLAN
A2-112	LEVEL 12 (MAIN ROOF) FLOOR PLAN
A2-113	LEVEL 13 (MECH. PENTHOUSE) FLOOR PLAN
A2-120	ROOF PLAN (LOWER)
A2-121	ROOF PLAN (UPPER)
A4 BUILDING ELEVATIONS	
A4-100	NORTH (LAURIER AVE W) ELEVATION
A4-101	EAST ELEVATION
A4-102	SOUTH ELEVATION
A4-103	WEST ELEVATION
A4-110	ENLARGED ELEVATIONS

Committee of Adjustment
 Received | Reçu le
 2023-09-06
 City of Ottawa | Ville d'Ottawa
 Comité de dérogation



2	REV. FOR SPC COMMENTS	230721
1	ISSUED FOR SITE PLAN CONTROL	230504

no revisions date

stamp | timbre



architect | architecte



general notes | note générale

- CONTRACTOR SHALL CHECK AND VERIFY ALL DIMENSIONS AND REPORT ALL ERRORS AND OMISSIONS TO THE ARCHITECT.
- DO NOT SCALE THE DRAWINGS.
- NOT FOR CONSTRUCTION UNLESS SIGNED BY THE ARCHITECT.

project title

360 LAURIER AVE W
 PROPOSED MIXED-USE RENOVATION

360 LAURIER AVE W | OTTAWA | ON | K1P 1C8

drawing title | titre du dessin

COVER SHEET

project number | numéro du projet **2225**

drawn | dessiné **JH**

checked | vérifié **JAP / MAR / AR**

date | date **11/29/22**

scale | échelle

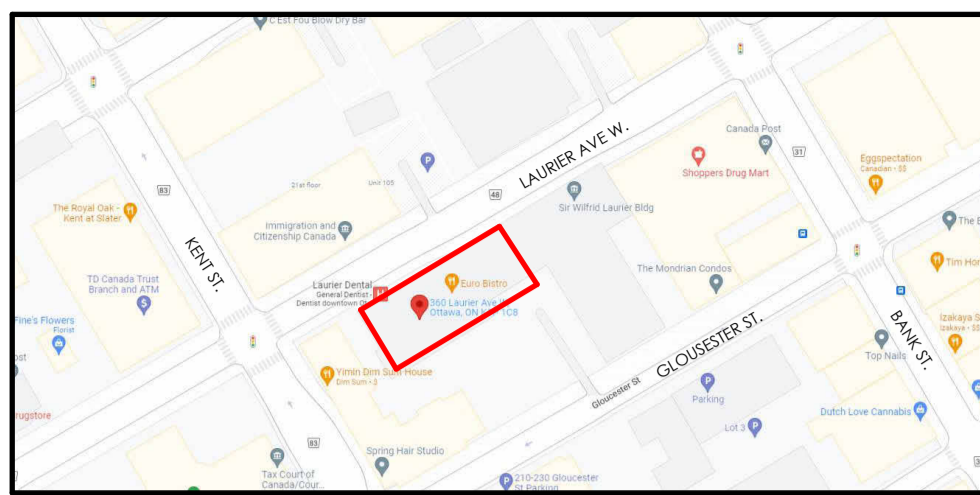
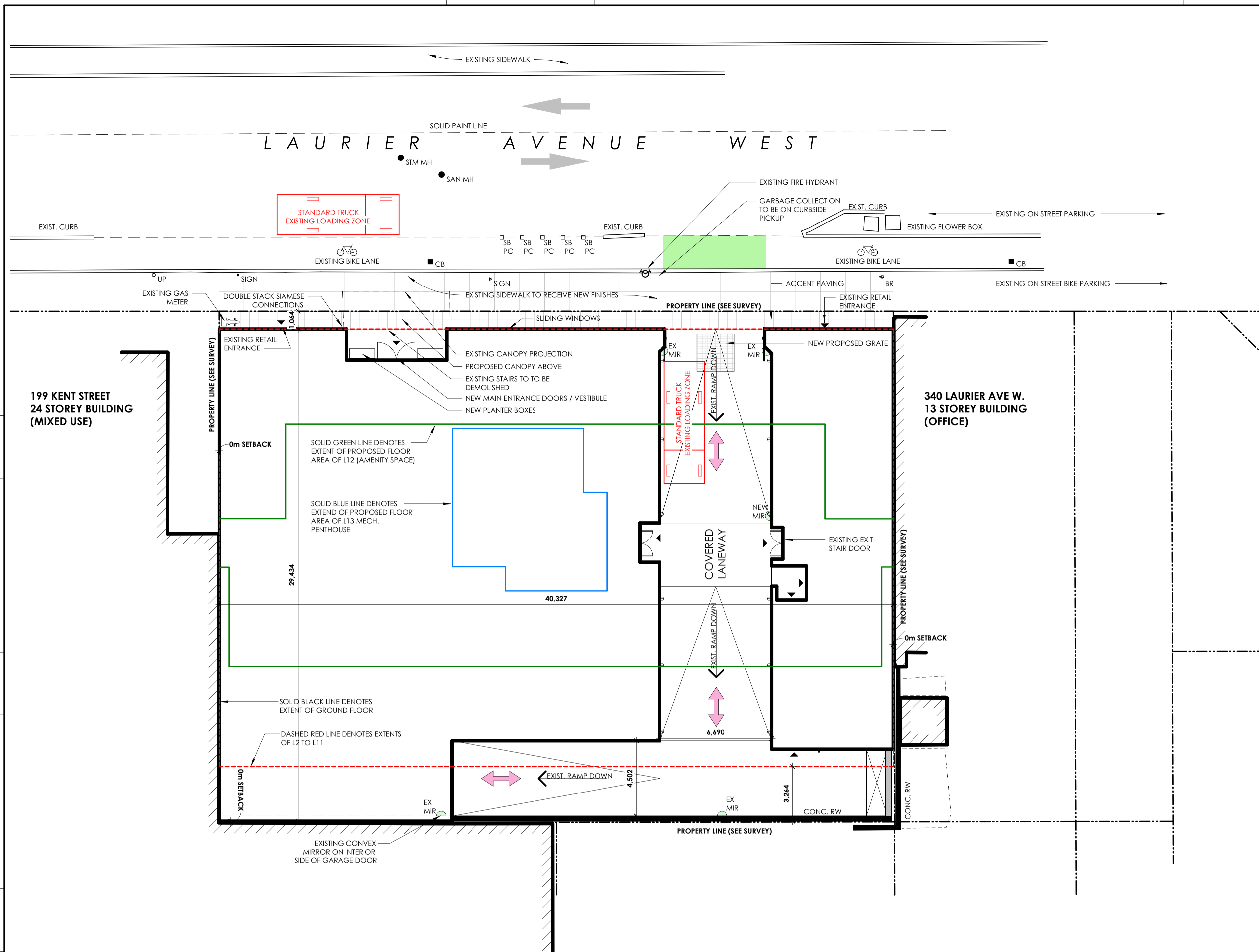
0 m 2 m 4 m

drawing number | numéro du dessin

A0-000

#xxxxx

D07-12-23-0055



KEY PLAN

LEGAL DESCRIPTION:
 PART OF LOTS 28 AND 29
 REGISTERED PLAN 2996
 CITY OF OTTAWA
 SURVEY REFERENCE:
 TECHNICAL INFORMATION GATHERED FROM
 SURVEY PREPARED BY CERTIFIED LAND
 SURVEYOR: FARLEY, J.D. BARNES LIMITED
 DATE: MARCH 10TH, 2023
 FILE # 23-10-013-02
 PLANNER CONTACT INFORMATION:
 NAME: C.M. FOX
 TEL: (613) 731-7244

SITE PLAN LEGEND

■ CB	CATCH BASIN
● SAN MH	SANITARY MAN HOLE
▲	BUILDING ENTRANCE
○ UP	UTILITY POLE
♣ SIGN	TRAFFIC SIGN
⊙	FIRE HYDRANT
♠ BR	SINGLE BIKE RACK BOLLARD
□ SB	COLLAPSABLE SAFETY BOLLARD 3'-0" - 5'-0" O.C.
□ SB PC	COLLAPSABLE SAFETY BOLLARD 3'-0" - 5'-0" O.C. MOUNTED ON PIN CURB
🚲	BICYCLE LANE
◡ MIR	EXISTING CONVEX MIRRORS

VEHICLE PARKING PROVIDED (BY FLOOR)

TYPE	COUNT
LEVEL P5 BASEMENT	
COMPACT (2438x5300)	9
STANDARD (2400x5200)	6
LEVEL P4 BASEMENT	
COMPACT (2438x5300)	9
STANDARD (2400x5200)	5
LEVEL P3 BASEMENT	
ACCESSIBLE (3400x5200)	2
COMPACT (2438x5300)	7
STANDARD (2400x5200)	3
LEVEL P2 BASEMENT	
COMPACT (2438x5300)	6
MOTORCYCLE (1200x2500)	2
STANDARD (2400x5200)	3
LEVEL P1 BASEMENT	
ACCESSIBLE (3400x5200)	1
COMPACT (2438x5300)	5
STANDARD (2400x5200)	2
GRAND TOTAL	40

BICYCLE PARKING PROVIDED (BY FLOOR)

TYPE	COUNT
LEVEL P4 BASEMENT	
HORIZONTAL DBL STACKED BICYCLE SPACE (SECURE)	8
LEVEL P2 BASEMENT	
HORIZONTAL DBL STACKED BICYCLE SPACE (SECURE)	6
LEVEL 01	
HORIZONTAL DBL STACKED BICYCLE SPACE (SECURE)	54
VERTICAL BICYCLE SPACE (SECURE)	9
GRAND TOTAL	77
REQUIRED	70

BICYCLE PARKING (LOCKER @ PARKING STALL)

LEVEL	COUNT
LEVEL P5 BASEMENT	
	13
LEVEL P4 BASEMENT	
	12
LEVEL P3 BASEMENT	
	12
GRAND TOTAL	37
GRAND TOTAL WITH ABOVE REQ'D	114

1 SITE PLAN - PROPOSED
 1:150
 A0-200

GENERAL NOTES:
 UNLESS OTHERWISE NOTED:
 A. SITE DEMOLITION PLAN AND SITE PLAN TO BE READ IN CONJUNCTION WITH LANDSCAPE AND CIVIL PACKAGE DRAWINGS.
 B. ALL CONSTRUCTED ELEMENTS ARE TO BE RETAINED.
 C. PROTECTION MEASURES ARE TO BE TAKEN TO PREVENT DAMAGE TO EXISTING STRUCTURES OR LANDSCAPE FROM OCCURRING.
 D. ANY PARKING SIGNAGE MOVED OR REMOVED DURING CONSTRUCTION WILL BE REINSTATED.
 E. SIDEWALK/CURB TO BE REINSTATED WHERE PRIVATE DRIVEWAYS HAVE BEEN DEMOLISHED OR WHERE DAMAGED THROUGH CONSTRUCTION PROCESS.

RESIDENTIAL SUITE COUNTS

TYPE	COUNT
1 BDRM	1
1 BDRM (B.F.)	19
1 BDRM (B.F.) + DEN	1
1 BDRM + DEN	19
2 BDRM	30
2 BDRM (B.F.)	10
2 BDRM + DEN	19
STUDIO	40
TOTAL	139

GFA AREA SCHEDULE

LEVEL	EXISTING AREA	PROPOSED AREA	DIFFERENCE
P5-BASEMENT (PARK./MECH.)	-	-	-
P4-BASEMENT (PARK./MECH.)	-	-	-
P3-BASEMENT (PARK./MECH.)	-	-	-
P2-BASEMENT (PARK./MECH.)	-	-	-
P1-BASEMENT (PARK./MECH.)	-	-	-
LEVEL 01 (RETAIL/AMENITY)	728.31 m ²	704.53 m ²	-23.78 m ²
LEVEL 02 (RESIDENTIAL)	831.90 m ²	807.53 m ²	-24.37 m ²
LEVEL 03 (RESIDENTIAL)	916.17 m ²	893.20 m ²	-22.97 m ²
LEVEL 04 (RESIDENTIAL)	916.17 m ²	893.20 m ²	-22.97 m ²
LEVEL 05 (RESIDENTIAL)	916.17 m ²	893.20 m ²	-22.97 m ²
LEVEL 06 (RESIDENTIAL)	916.17 m ²	893.20 m ²	-22.97 m ²
LEVEL 07 (RESIDENTIAL)	916.17 m ²	893.20 m ²	-22.97 m ²
LEVEL 08 (RESIDENTIAL)	916.17 m ²	893.20 m ²	-22.97 m ²
LEVEL 09 (RESIDENTIAL)	916.17 m ²	893.20 m ²	-22.97 m ²
LEVEL 10 (RESIDENTIAL)	916.17 m ²	893.20 m ²	-22.97 m ²
LEVEL 11 (RESIDENTIAL)	916.17 m ²	893.20 m ²	-22.97 m ²
LEVEL 12 FFL (AMENITIES)	293.40 m ²	330.16 m ²	36.76 m ²
LEVEL 13 (MECH.)	-	-	-
TOTAL	10,099.12 m²	9,881.05 m²	-218.07 m²

RESIDENTIAL SUITE AREAS

TYPE	AREA (SQ.M)	AREA (SF)
LEVEL 02		
SUITE 01 1 BDRM (B.F.) + DEN	54.72 m ²	588.96 ft ²
SUITE 03 2 BDRM	65.54 m ²	705.50 ft ²
SUITE 04 2 BDRM (B.F.)	62.54 m ²	673.13 ft ²
SUITE 05 STUDIO	45.26 m ²	487.16 ft ²
SUITE 06 STUDIO	38.93 m ²	419.04 ft ²
SUITE 07 1 BDRM	47.52 m ²	511.49 ft ²
SUITE 08 1 BDRM + DEN	59.15 m ²	636.69 ft ²
SUITE 09 STUDIO	38.95 m ²	419.30 ft ²
SUITE 10 STUDIO	45.05 m ²	484.91 ft ²
SUITE 11 2 BDRM	62.71 m ²	675.05 ft ²
SUITE 12 2 BDRM	70.20 m ²	755.58 ft ²
SUITE 13 2 BDRM + DEN	72.25 m ²	777.67 ft ²
SUITE 14 1 BDRM (B.F.)	52.31 m ²	563.11 ft ²
LEVEL 03 TO LEVEL 11 (TYPICAL)		
SUITE 01 1 BDRM (B.F.)	52.55 m ²	565.64 ft ²
SUITE 02 2 BDRM + DEN	72.20 m ²	777.17 ft ²
SUITE 03 2 BDRM	70.51 m ²	759.00 ft ²
SUITE 04 2 BDRM (B.F.)	62.54 m ²	673.13 ft ²
SUITE 05 STUDIO	45.26 m ²	487.16 ft ²
SUITE 06 STUDIO	38.93 m ²	419.04 ft ²
SUITE 07 1 BDRM + DEN	56.87 m ²	612.12 ft ²
SUITE 08 1 BDRM + DEN	56.62 m ²	609.44 ft ²
SUITE 09 STUDIO	38.97 m ²	419.42 ft ²
SUITE 10 STUDIO	44.26 m ²	476.41 ft ²
SUITE 11 2 BDRM	63.92 m ²	688.08 ft ²
SUITE 12 2 BDRM	70.48 m ²	758.65 ft ²
SUITE 13 2 BDRM + DEN	72.55 m ²	780.87 ft ²
SUITE 14 1 BDRM (B.F.)	52.59 m ²	566.07 ft ²
TOTAL	8,232.44 m²	88,613.24 ft²

ZONING MATRIX

ITEM	FIELD	DATA	ITEM	FIELD	DATA
1	LEGAL DESCRIPTION	LOTS 28 AND 29 REGISTERED PLAN 2996	9	LOADING ZONE	REQUIRED: PROPOSED: RESIDENTIAL: 0 spaces (min) 1 SHARED LOADING ZONE PROPOSED:
2	CURRENT ZONING PERMITTED USES:	MD S25 APARTMENT DWELLINGS (HIGH RISE), RESTAURANT (CONDITIONAL), OFFICE (CURRENT EXCEPTION)	10	PARKING	REQUIRED: RESIDENTIAL: 0 MAXIMUM: 1.5 PER UNIT = 209 spots VISITOR: 0.1 PER SUITE AFTER FIRST 12 UNITS = 13 spots TOTAL: 13 PROPOSED: TOTAL: 60
3	LOT AREA	1,233.35 m ² (EXISTING UNCHANGED)	11	BICYCLE PARKING	REQUIRED: PROPOSED: RESIDENTIAL: 0.5 / UNIT = 70 SPACES TOTAL: 77 PROPOSED: TOTAL: 77
4	LOT FRONTAGE	40.32 m (EXISTING UNCHANGED)	12	LANDSCAPED AREAS	REQUIRED: PROPOSED: NONE NOTED FOR THIS SITE
5	BUILDING AREA	1,057.83 m ² (EXISTING UNCHANGED)	13	DRIVE AISLES	REQUIRED: SINGLE TRAFFIC LANE: 3m DOUBLE TRAFFIC LANE: MINIMUM: 6m; MAXIMUM: 3.6m FOR LESS THAN 20 PARKING SPACES, 6.7m FOR 20 OF MORE PARKING SPACES PROPOSED: SEE PLANS
6	BUILDING SETBACKS	FRONT YARD REQUIRED: NO MINIMUM FRONT YARD (EXISTING): 1.02m REAR YARD (REQUIRED): NO MINIMUM REAR YARD (EXISTING): 0m INTERIOR SIDE YARD (REQUIRED): NO MINIMUM INTERIOR SIDE YARD (EXISTING): 0m			
7	AMENITY SPACE	REQUIRED: PROPOSED COMMUNAL AMENITY: 6m ² x 139 DWELLING UNITS = 834 m ² GROUND LEVEL INTERIOR: 228.4 m ² L12 INTERIOR: 326 m ² L12 EXTERIOR: 426.5 m ² TOTAL: 960.9 m ²			
8	BUILDING HEIGHT	HEIGHTS: PROPOSED CHANGE TO USE AS FOLLOWS: 36.39 m TO TOP OF MAIN ROOF AMENITY 40.26 m TO TOP OF AMENITY PENTHOUSE (L12) 44.75 m TO TOP OF MECHANICAL PENTHOUSE / EMR (L13)			

2 REV. FOR SPC COMMENTS 230721
 1 ISSUED FOR SITE PLAN CONTROL 230504
 no revisions date
 stamp | timbre



general notes | note générale
 1. CONTRACTOR SHALL CHECK AND VERIFY ALL DIMENSIONS AND REPORT ALL ERRORS AND OMISSIONS TO THE ARCHITECT.
 2. DO NOT SCALE THE DRAWINGS.
 3. NOT FOR CONSTRUCTION UNLESS SIGNED BY THE ARCHITECT.

360 LAURIER AVE W
 PROPOSED MIXED-USE RENOVATION

360 LAURIER AVE W | OTTAWA | ON | K1P 1C8
 drawing title | titre du dessin

SITE PLAN

project number | numero du projet **2225**
 drawn | dessiné **JH**
 checked | vérifié **JAP / MAR / AR**
 date | date **12/08/22**
 scale | échelle **As indicated**



drawing number | numéro du dessin
A0-801

VEHICLE PARKING PROVIDED (BY FLOOR)	
TYPE	COUNT
LEVEL P5 BASEMENT	
COMPACT (2438x5300)	9
STANDARD (2600x5200)	6
LEVEL P4 BASEMENT	
COMPACT (2438x5300)	9
STANDARD (2600x5200)	5
LEVEL P3 BASEMENT	
ACCESSIBLE (3400x5200)	2
COMPACT (2438x5300)	7
STANDARD (2600x5200)	3
LEVEL P2 BASEMENT	
COMPACT (2438x5300)	6
MOTORCYCLE (1200x2500)	2
STANDARD (2600x5200)	3
LEVEL P1 BASEMENT	
ACCESSIBLE (3400x5200)	1
COMPACT (2438x5300)	5
STANDARD (2600x5200)	2
GRAND TOTAL	60

BICYCLE PARKING PROVIDED (BY FLOOR)	
TYPE	COUNT
LEVEL P4 BASEMENT	
HORIZONTAL DBL STACKED BICYCLE SPACE (SECURE)	8
LEVEL P2 BASEMENT	
HORIZONTAL DBL STACKED BICYCLE SPACE (SECURE)	6
LEVEL 01	
HORIZONTAL DBL STACKED BICYCLE SPACE (SECURE)	54
VERTICAL BICYCLE SPACE (SECURE)	9
GRAND TOTAL	77
REQUIRED	70

BICYCLE PARKING (LOCKER @ PARKING STALL)	
LEVEL	COUNT
LEVEL P5 BASEMENT	13
LEVEL P4 BASEMENT	12
LEVEL P3 BASEMENT	12
GRAND TOTAL	37
GRAND TOTAL WITH ABOVE REQ'D	114

RESIDENTIAL LOCKERS SCHEDULE (BY TYPE)	
TYPE	COUNT
RESIDENTIAL STORAGE LOCKER	
GROUND FLOOR - 36"Wx48"Dx80"H	18
PARKING - 36"Wx48"Dx80"	24
TYPICAL FLOORS - 36"Wx48"Dx80"	98
GRAND TOTAL	140

CLV GROUP DEVELOPMENTS
485 BANK STREET, SUITE 200, OTTAWA K2P 1Z2
client | client

CLELAND JARDINE ENGINEERING LTD.
PROFESSIONAL ENGINEER (P.E.)
PROFESSIONNEL INGENIEUR (P.ING.)
(813) 981-1933
structural engineers | ingénieur structure

Smith + Andersen
MEP engineers | ingénieur MEP

LRL ENGINEERING INC.
civil engineers | ingénieur civil

CSW
landscape architect | architecte paysagiste

nord du projet / project north
nord actuel / true north

2 REV. FOR SPC COMMENTS 230721
1 ISSUED FOR SITE PLAN CONTROL 230504
no revisions date
stamp | firme

ONTARIO ASSOCIATION OF ARCHITECTS
ANDREW REEVES
LICENCE 6464

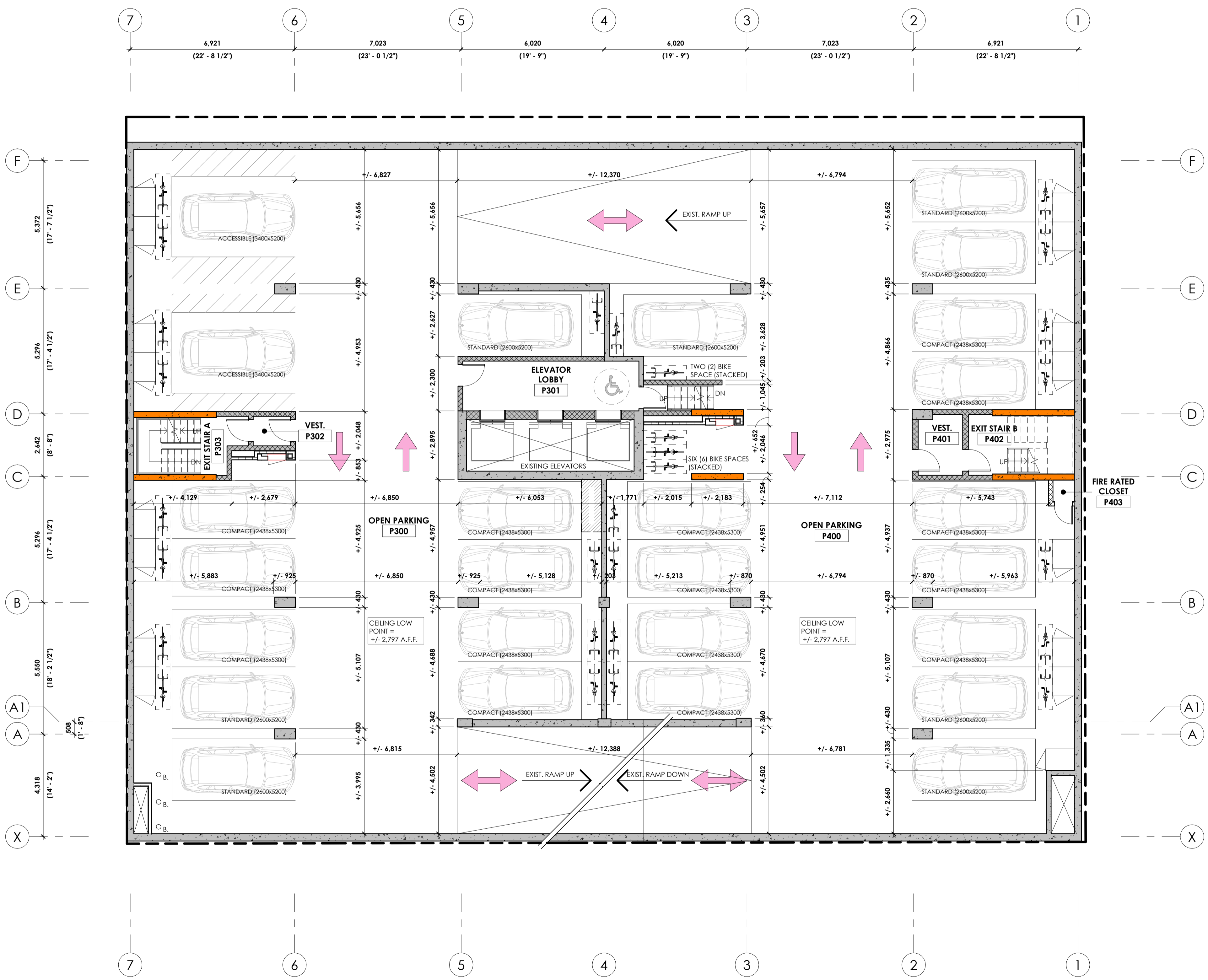
architect | architecte
linebox STUDIO

general notes | note générale
1. CONTRACTOR SHALL CHECK AND VERIFY ALL DIMENSIONS AND REPORT ALL ERRORS AND OMISSIONS TO THE ARCHITECT.
2. DO NOT SCALE THE DRAWINGS.
3. NOT FOR CONSTRUCTION UNLESS SIGNED BY THE ARCHITECT.

project title
360 LAURIER AVE W
PROPOSED MIXED-USE RENOVATION

360 LAURIER AVE W | OTTAWA | ON | K1P 1C8
drawing title | titre du dessin
P3 AND P4 BASEMENT FLOOR PLAN

project number | numéro du projet 2225
drawn | dessiné JH
checked | vérifié JAP / MAR / AR
date | date 11/28/22
scale | échelle 1 : 100
drawing number | numéro du dessin
A2-099

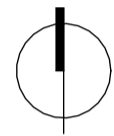


	EXISTING TO REMAIN
	NEW (PROPOSED)



LRL

ENGINEERING | INGENIEURIE



nord du projet
project north



nord actuel
true north

2. REV. FOR SPC COMMENTS	230721
1. ISSUED FOR SITE PLAN CONTROL	230504
no revisions	date

stamp | timbre



architect | architecte



general notes | note générale

- CONTRACTOR SHALL CHECK AND VERIFY ALL DIMENSIONS AND REPORT ALL ERRORS AND OMISSIONS TO THE ARCHITECT.
- DO NOT SCALE THE DRAWINGS.
- NOT FOR CONSTRUCTION UNLESS SIGNED BY THE ARCHITECT.

project title

360 LAURIER AVE W
PROPOSED MIXED-USE RENOVATION

360 LAURIER AVE W | OTTAWA | ON | K1P 1C8

drawing title | titre du dessin

P1 AND P2 BASEMENT FLOOR PLAN

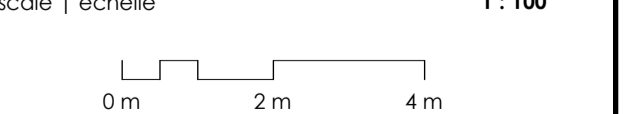
project number | numéro du projet **2225**

drawn | dessiné **JH**

checked | vérifié **JAP / MAR / AR**

date | date **11/28/22**

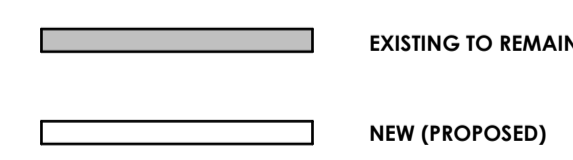
scale | échelle **1 : 100**



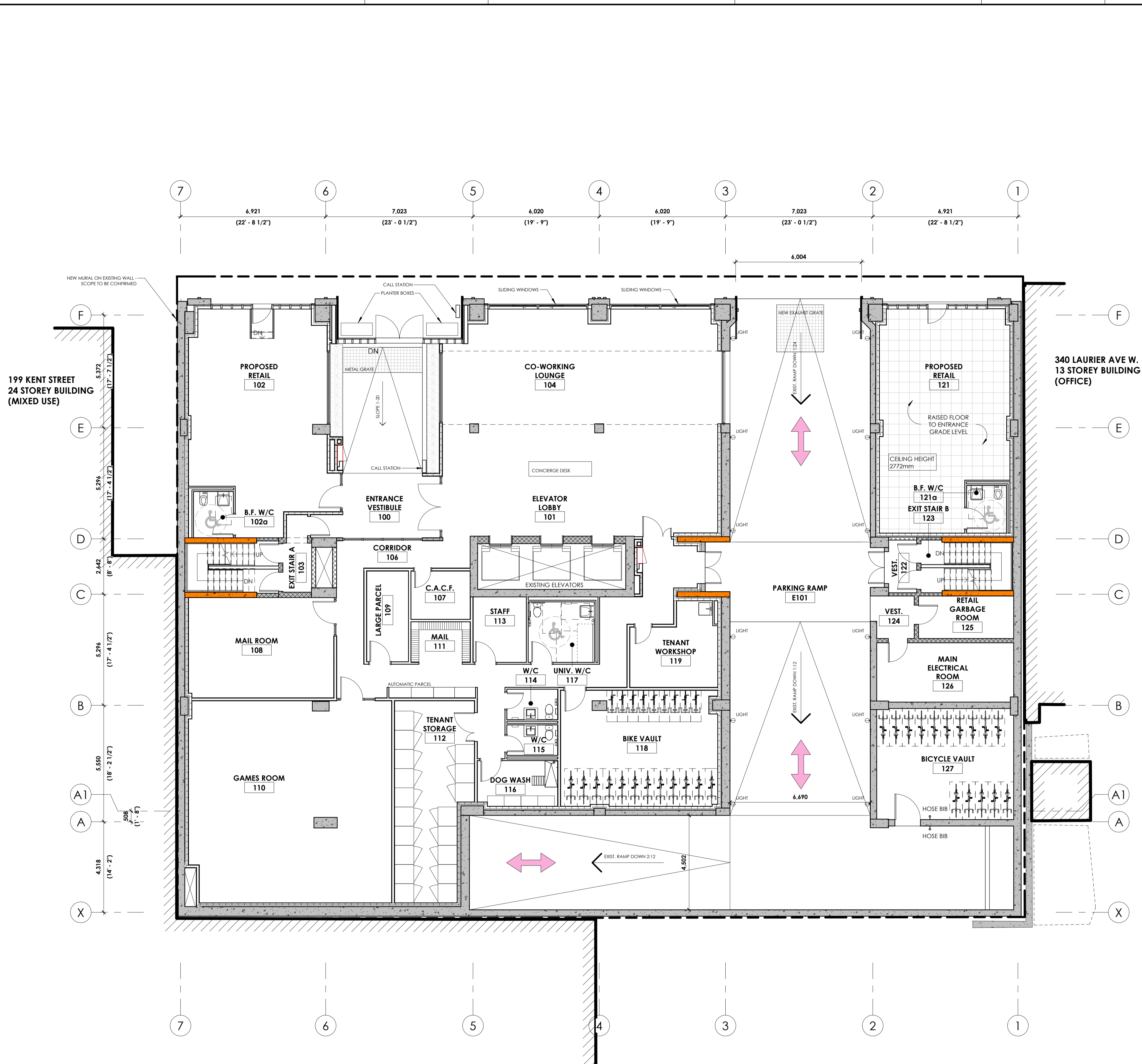
drawing number | numéro du dessin

A2-100

#XXXXX



D07-12-23-0055



BICYCLE PARKING PROVIDED (BY FLOOR)

TYPE	COUNT
LEVEL P4 BASEMENT	
HORIZONTAL DBL STACKED BICYCLE SPACE (SECURE)	8
LEVEL P2 BASEMENT	
HORIZONTAL DBL STACKED BICYCLE SPACE (SECURE)	6
LEVEL 01	
HORIZONTAL DBL STACKED BICYCLE SPACE (SECURE)	54
VERTICAL BICYCLE SPACE (SECURE)	9
GRAND TOTAL REQUIRED	77
PROVIDED	70

BICYCLE PARKING (LOCKER @ PARKING STALL)

LEVEL	COUNT
LEVEL P5 BASEMENT	
	13
LEVEL P4 BASEMENT	
	12
LEVEL P3 BASEMENT	
	12
GRAND TOTAL	37
GRAND TOTAL WITH ABOVE REQ'D	114

RESIDENTIAL LOCKERS SCHEDULE (BY TYPE)

TYPE	COUNT
RESIDENTIAL STORAGE LOCKER	
GROUND FLOOR - 36"Wx48"Dx80"H	18
PARKING - 36"Wx48"Dx80"	24
TYPICAL FLOORS - 36"Wx48"Dx80"	98
GRAND TOTAL	140

CLV GROUP DEVELOPMENTS
485 BANK STREET, SUITE 200, OTTAWA K2P 1Z2

client | client

CLELAND JARDINE
ENGINEERING LTD.
PROFESSIONAL ENGINEER
P. ENG. REG. NO. 11533
(613) 981-1933

structural engineers | ingénieur structure

Smith + Andersen

MEP engineers | ingénieur MEP

LRL
ENGINEERING | INGENIEUR
civil engineers | ingénieur civil

C S W

landscape architect | architecte paysagiste

nord du projet / project north

nord actuel / true north

2 REV. FOR SPC COMMENTS 230721

1 ISSUED FOR SITE PLAN CONTROL 230504

no revisions date

stamp | timbre

ONTARIO ASSOCIATION OF ARCHITECTS

ANDREW REEVES
LICENCE 6464

architect | architecte

linebox
STUDIO

general notes | note générale

- CONTRACTOR SHALL CHECK AND VERIFY ALL DIMENSIONS AND REPORT ALL ERRORS AND OMISSIONS TO THE ARCHITECT.
- DO NOT SCALE THE DRAWINGS.
- NOT FOR CONSTRUCTION UNITS, SIGNED BY THE ARCHITECT.

360 LAURIER AVE W
PROPOSED MIXED-USE RENOVATION

360 LAURIER AVE W | OTTAWA | ON | K1P 1C8

drawing title | titre du dessin

LEVEL 01 FLOOR PLAN

project number | numéro du projet 2225

drawn | dessiné JH

checked | vérifié JAP / MAR / AR

date | date 11/28/22

scale | échelle 1:100

0 m 2 m 4 m

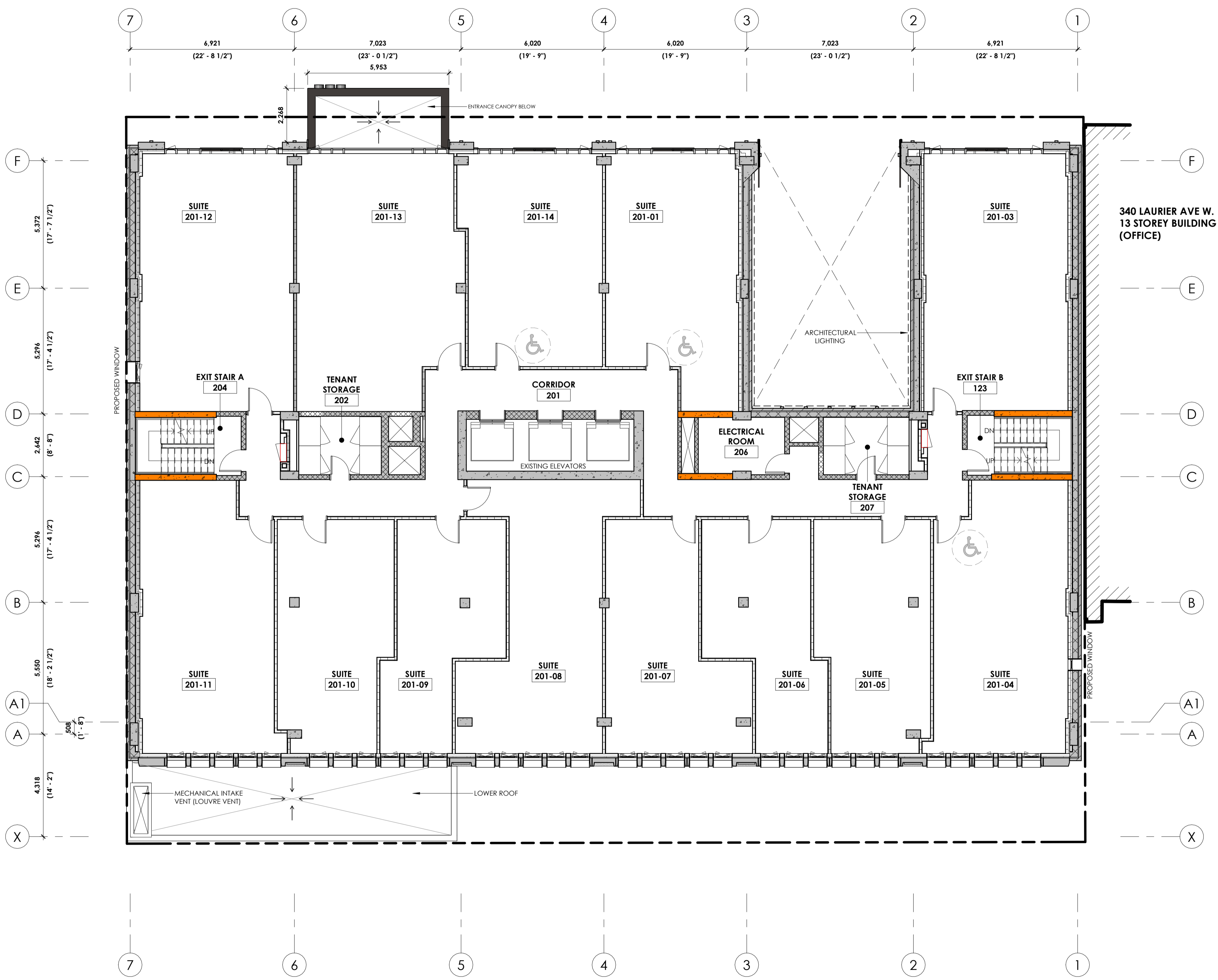
drawing number | numéro du dessin

A2-101

1 LEVEL 01 FLOOR PLAN
A2-101 1:100 A0-200

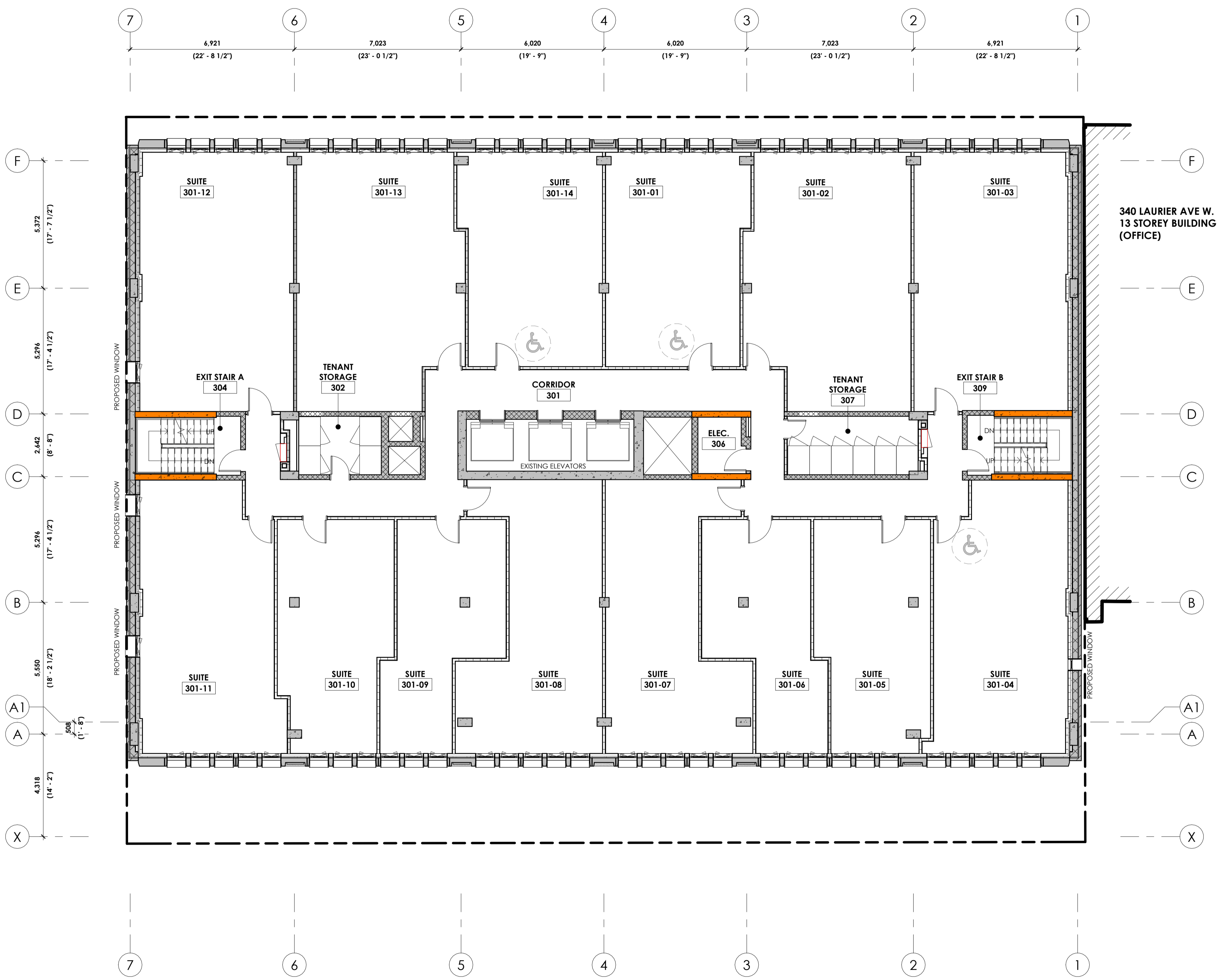
RESIDENTIAL SUITE AREAS			
	TYPE	AREA (SQ.M)	AREA (SF)
LEVEL 02			
SUITE 01	2 BDRM (B.F.) + DEN	54.72 m ²	588.96 ft ²
SUITE 03	2 BDRM	65.54 m ²	705.50 ft ²
SUITE 04	2 BDRM (B.F.)	62.54 m ²	673.13 ft ²
SUITE 05	STUDIO	45.26 m ²	487.16 ft ²
SUITE 06	STUDIO	38.93 m ²	419.04 ft ²
SUITE 07	1 BDRM	47.52 m ²	511.49 ft ²
SUITE 08	1 BDRM + DEN	59.15 m ²	636.69 ft ²
SUITE 09	STUDIO	38.95 m ²	419.30 ft ²
SUITE 10	STUDIO	45.05 m ²	484.91 ft ²
SUITE 11	2 BDRM	62.71 m ²	675.05 ft ²
SUITE 12	2 BDRM	70.20 m ²	755.58 ft ²
SUITE 13	2 BDRM + DEN	72.25 m ²	777.67 ft ²
SUITE 14	1 BDRM (B.F.)	52.31 m ²	563.11 ft ²
LEVEL 03 TO LEVEL 11 (TYPICAL)			
SUITE 01	1 BDRM (B.F.)	52.55 m ²	565.64 ft ²
SUITE 02	2 BDRM + DEN	72.20 m ²	777.17 ft ²
SUITE 03	2 BDRM	70.51 m ²	759.00 ft ²
SUITE 04	2 BDRM (B.F.)	62.54 m ²	673.13 ft ²
SUITE 05	STUDIO	45.26 m ²	487.16 ft ²
SUITE 06	STUDIO	38.93 m ²	419.04 ft ²
SUITE 07	1 BDRM + DEN	56.87 m ²	612.12 ft ²
SUITE 08	1 BDRM + DEN	56.62 m ²	609.44 ft ²
SUITE 09	STUDIO	38.97 m ²	419.42 ft ²
SUITE 10	STUDIO	44.26 m ²	476.41 ft ²
SUITE 11	2 BDRM	63.92 m ²	688.08 ft ²
SUITE 12	2 BDRM	70.48 m ²	758.65 ft ²
SUITE 13	2 BDRM + DEN	72.55 m ²	780.87 ft ²
SUITE 14	1 BDRM (B.F.)	52.59 m ²	566.07 ft ²
TOTAL		8,232.44 m²	88,613.24 ft²

RESIDENTIAL LOCKERS SCHEDULE (BY TYPE)		
TYPE	COUNT	
RESIDENTIAL STORAGE LOCKER		
GROUND FLOOR - 36"Wx48"Dx80"H	18	
PARKING - 36"Wx48"Dx80"	24	
TYPICAL FLOORS - 36"Wx48"Dx80"	98	
GRAND TOTAL	140	



RESIDENTIAL SUITE AREAS			
	TYPE	AREA (SQ.M)	AREA (SF)
LEVEL 02			
SUITE 01	1 BDRM (B.F.) + DEN	54.72 m ²	588.96 ft ²
SUITE 03	2 BDRM	65.54 m ²	705.50 ft ²
SUITE 04	2 BDRM (B.F.)	62.54 m ²	673.13 ft ²
SUITE 05	STUDIO	45.26 m ²	487.16 ft ²
SUITE 06	STUDIO	38.93 m ²	419.04 ft ²
SUITE 07	1 BDRM	47.52 m ²	511.49 ft ²
SUITE 08	1 BDRM + DEN	59.15 m ²	636.69 ft ²
SUITE 09	STUDIO	38.95 m ²	419.30 ft ²
SUITE 10	STUDIO	45.05 m ²	484.91 ft ²
SUITE 11	2 BDRM	62.71 m ²	675.05 ft ²
SUITE 12	2 BDRM	70.20 m ²	755.58 ft ²
SUITE 13	2 BDRM + DEN	72.25 m ²	777.67 ft ²
SUITE 14	1 BDRM (B.F.)	52.31 m ²	563.11 ft ²
LEVEL 03 TO LEVEL 11 (TYPICAL)			
SUITE 01	1 BDRM (B.F.)	52.55 m ²	565.64 ft ²
SUITE 02	2 BDRM + DEN	72.20 m ²	777.17 ft ²
SUITE 03	2 BDRM	70.51 m ²	759.00 ft ²
SUITE 04	2 BDRM (B.F.)	62.54 m ²	673.13 ft ²
SUITE 05	STUDIO	45.26 m ²	487.16 ft ²
SUITE 06	STUDIO	38.93 m ²	419.04 ft ²
SUITE 07	1 BDRM + DEN	56.87 m ²	612.12 ft ²
SUITE 08	1 BDRM + DEN	56.62 m ²	609.44 ft ²
SUITE 09	STUDIO	38.97 m ²	419.42 ft ²
SUITE 10	STUDIO	44.26 m ²	476.41 ft ²
SUITE 11	2 BDRM	63.92 m ²	688.08 ft ²
SUITE 12	2 BDRM	70.48 m ²	758.65 ft ²
SUITE 13	2 BDRM + DEN	72.55 m ²	780.87 ft ²
SUITE 14	1 BDRM (B.F.)	52.59 m ²	566.07 ft ²
TOTAL		8,232.44 m²	88,613.24 ft²

RESIDENTIAL LOCKERS SCHEDULE (BY TYPE)		
TYPE	COUNT	
RESIDENTIAL STORAGE LOCKER		
GROUND FLOOR - 36"Wx48"Dx80"H	18	
PARKING - 36"Wx48"Dx80"	24	
TYPICAL FLOORS - 36"Wx48"Dx80"	98	
GRAND TOTAL	140	



EXISTING TO REMAIN
NEW (PROPOSED)

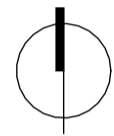


LRL

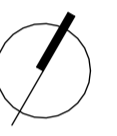
ENGINEERING | INGENIEURIE



CSW



nord du projet
project north



nord actuel
true north



- CONTRACTOR SHALL CHECK AND VERIFY ALL DIMENSIONS AND REPORT ALL ERRORS AND OMISSIONS TO THE ARCHITECT.
- DO NOT SCALE THE DRAWINGS.
- NOT FOR CONSTRUCTION UNLESS SIGNED BY THE ARCHITECT.

360 LAURIER AVE W
PROPOSED MIXED-USE RENOVATION

360 LAURIER AVE W | OTTAWA | ON | K1P 1C8

drawing title | titre du dessin

LEVEL 12 (MAIN ROOF) FLOOR PLAN

project number | numéro du projet 2225

drawn | dessiné JH

checked | vérifié JAP / MAR / AR

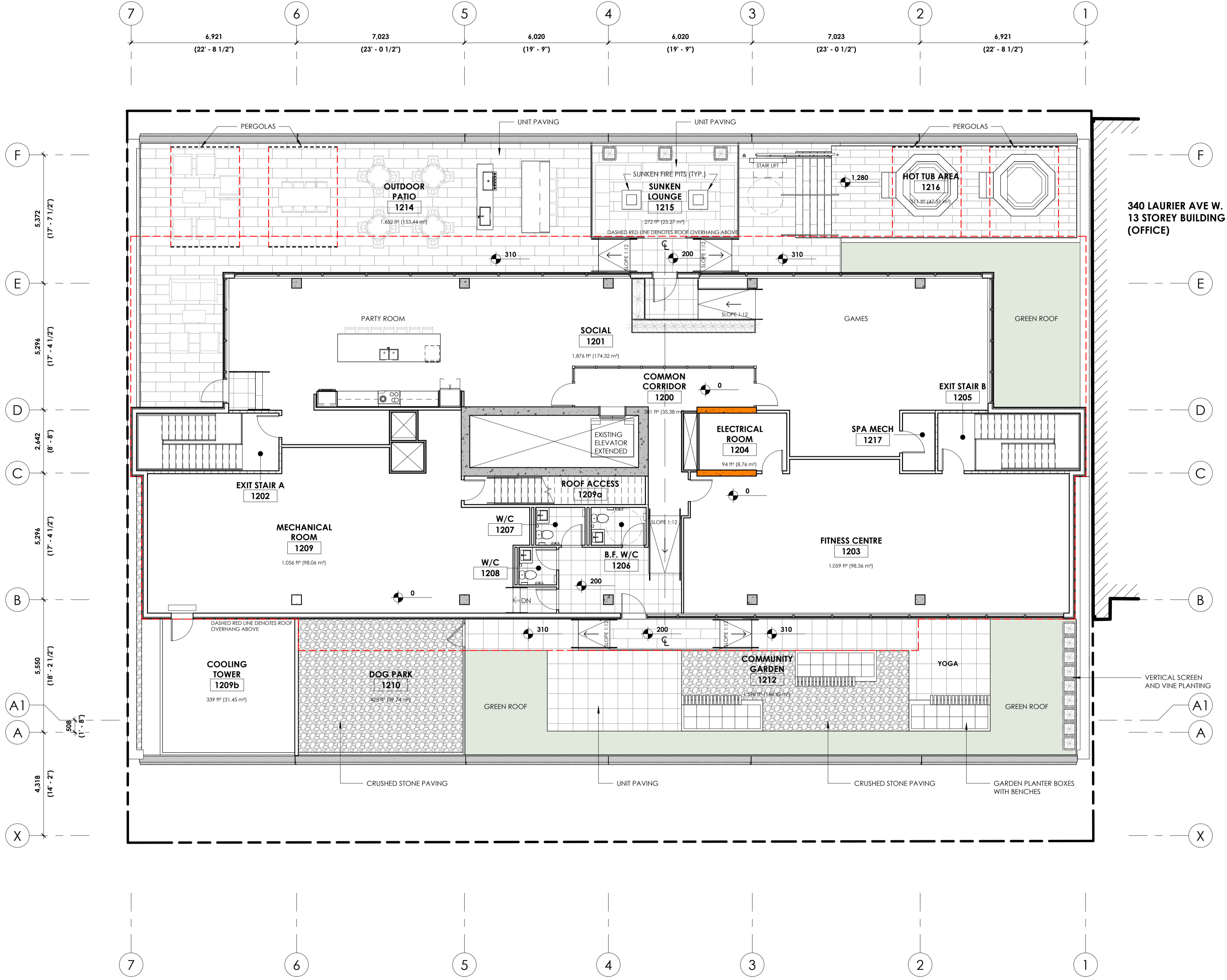
date | date 11/28/22

scale | échelle 1 : 100

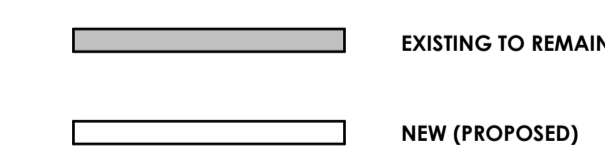
drawing number | numéro du dessin

A2-112

#XXXXX



GENERAL NOTES:
1. REFER TO LANDSCAPE PACKAGE & DRAWINGS FOR ADDITIONAL INFORMATION AND DETAILS.

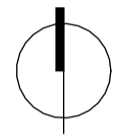


1 LEVEL 12 (MAIN ROOF) FLOOR PLAN
A2-112 1:100 AD-200

D07-12-23-0055



LRL
ENGINEERING | INGENIERIE



nord du projet
project north



nord actuel
true north

2	REV. FOR SPC COMMENTS	230721
1	ISSUED FOR SITE PLAN CONTROL	230504

no revisions _____ date _____

stamp | timbre _____



architect | architecte



general notes | note générale

- CONTRACTOR SHALL CHECK AND VERIFY ALL DIMENSIONS AND REPORT ALL ERRORS AND OMISSIONS TO THE ARCHITECT.
- DO NOT SCALE THE DRAWINGS.
- NOT FOR CONSTRUCTION UNITS, SIGNED BY THE ARCHITECT.

project title

360 LAURIER AVE W
PROPOSED MIXED-USE RENOVATION

360 LAURIER AVE W | OTTAWA | ON | K1P 1C8

drawing title | titre du dessin

LEVEL 13 (MECH. PENTHOUSE) FLOOR PLAN

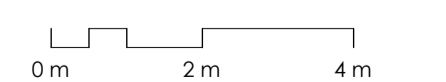
project number | numéro du projet **2225**

drawn | dessiné **JH**

checked | vérifié **JAP / MAR / AR**

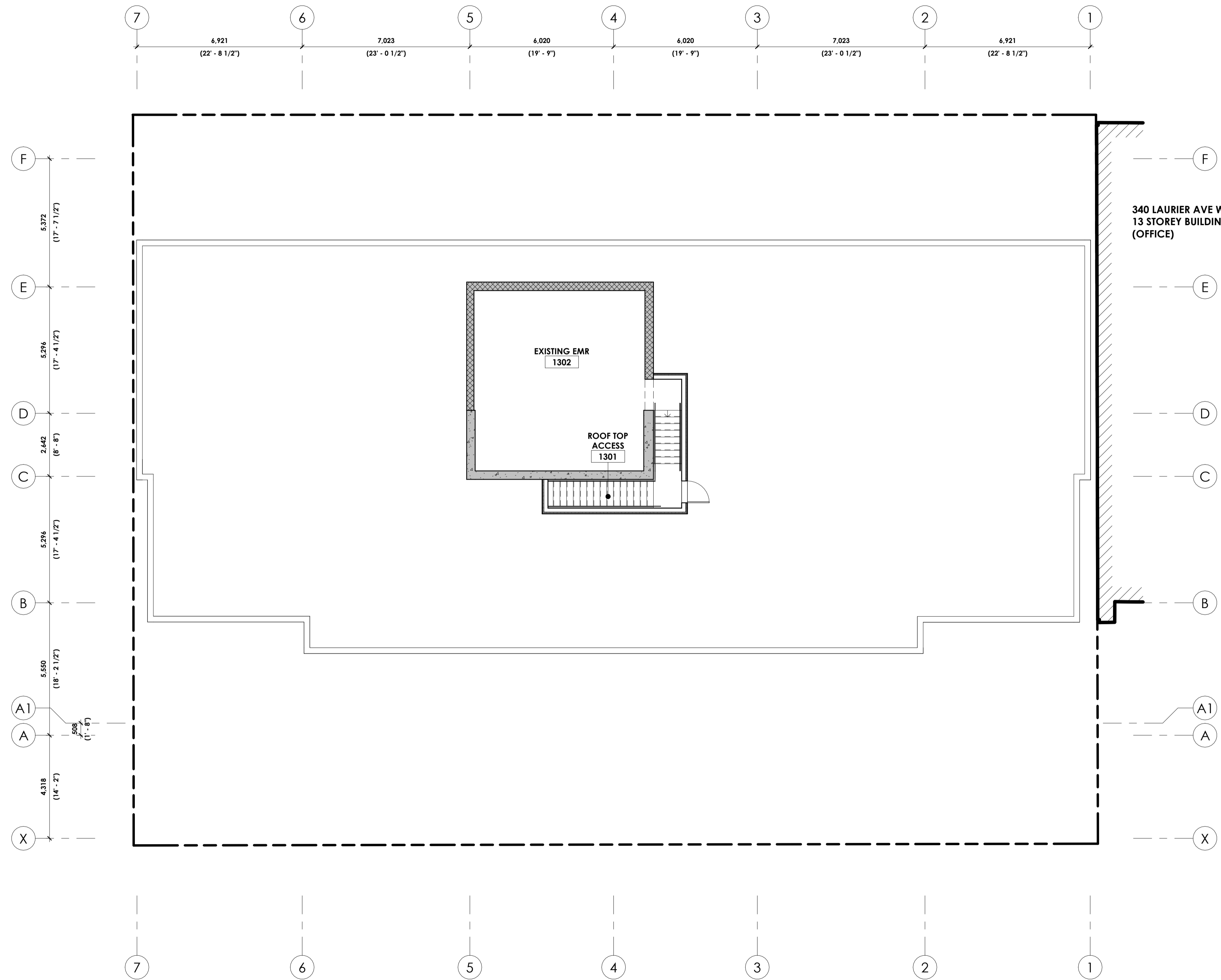
date | date **12/14/22**

scale | échelle **1 : 100**



drawing number | numéro du dessin

A2-113



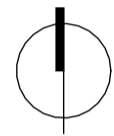


LRL

ENGINEERING | INGÉNIEURIE



CSW



nord du projet
project north



nord actuel
true north

2 REV. FOR SPC COMMENTS 230721

1 ISSUED FOR SITE PLAN CONTROL 230504

no revisions date

stamp | timbre



architect | architecte



general notes | note générale

- CONTRACTOR SHALL CHECK AND VERIFY ALL DIMENSIONS AND REPORT ALL ERRORS AND OMISSIONS TO THE ARCHITECT.
- DO NOT SCALE THE DRAWINGS.
- NOT FOR CONSTRUCTION UNITS, SIGNED BY THE ARCHITECT.

project title

360 LAURIER AVE W
PROPOSED MIXED-USE RENOVATION

360 LAURIER AVE W | OTTAWA | ON | K1P 1C8

drawing title | titre du dessin

ROOF PLAN (LOWER)

project number | numéro du projet 2225

drawn | dessiné JH

checked | vérifié JAP / MAR / AR

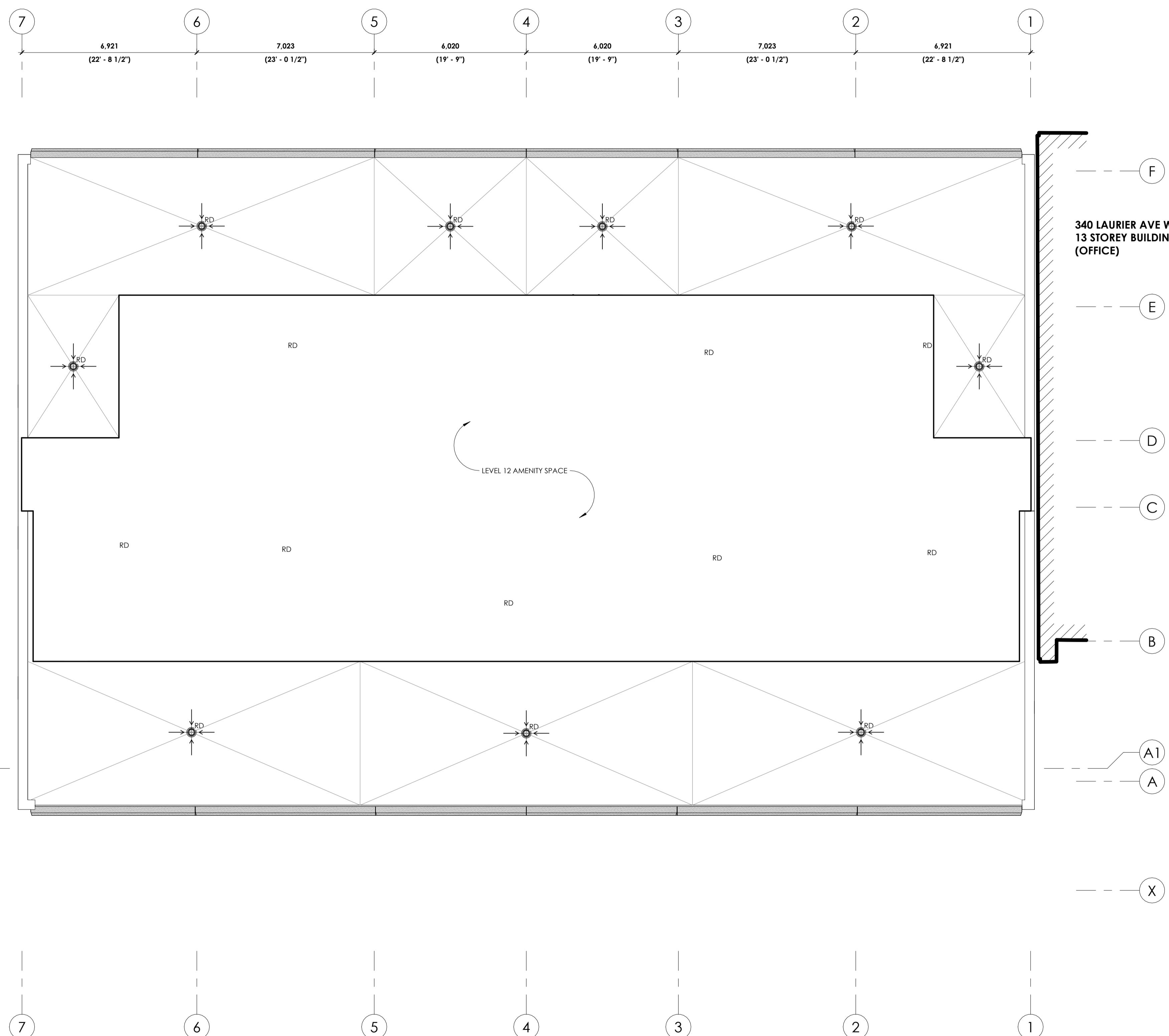
date | date 04/10/23

scale | échelle 1 : 100

drawing number | numéro du dessin

A2-120

#xxxxxx



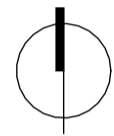


LRL

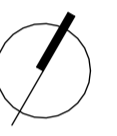
ENGINEERING | INGENIERIE



CSW



nord du projet
project north



nord actuel
true north

2	REV. FOR SPC COMMENTS	230721
1	ISSUED FOR SITE PLAN CONTROL	230504

no revisions date

stamp | fibre



- CONTRACTOR SHALL CHECK AND VERIFY ALL DIMENSIONS AND REPORT ALL ERRORS AND OMISSIONS TO THE ARCHITECT.
- DO NOT SCALE THE DRAWINGS.
- NOT FOR CONSTRUCTION UNITS, SIGNED BY THE ARCHITECT.

360 LAURIER AVE W
PROPOSED MIXED-USE RENOVATION

360 LAURIER AVE W | OTTAWA | ON | K1P 1C8

ROOF PLAN (UPPER)

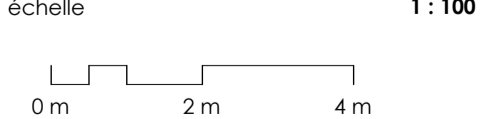
project number | numéro du projet **2225**

drawn | dessiné **JH**

checked | vérifié **JAP / MAR / AR**

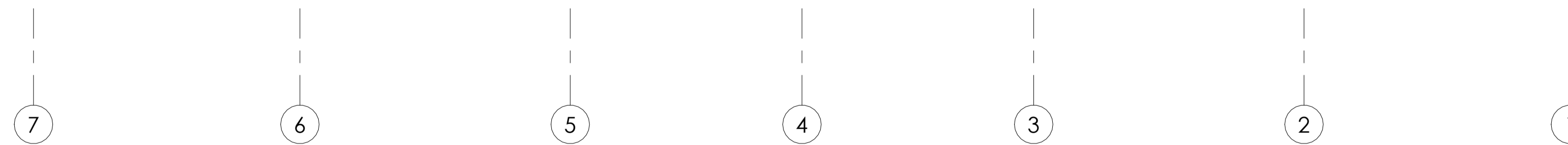
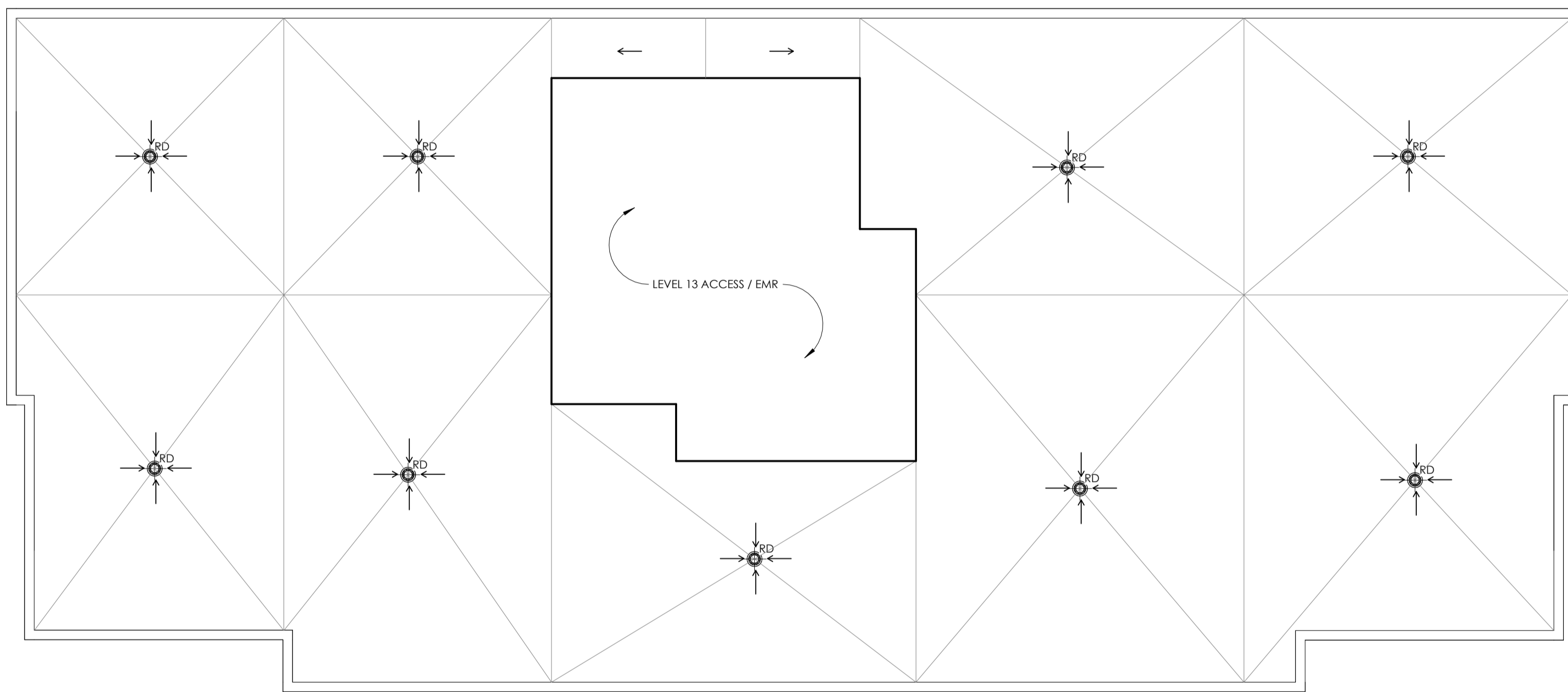
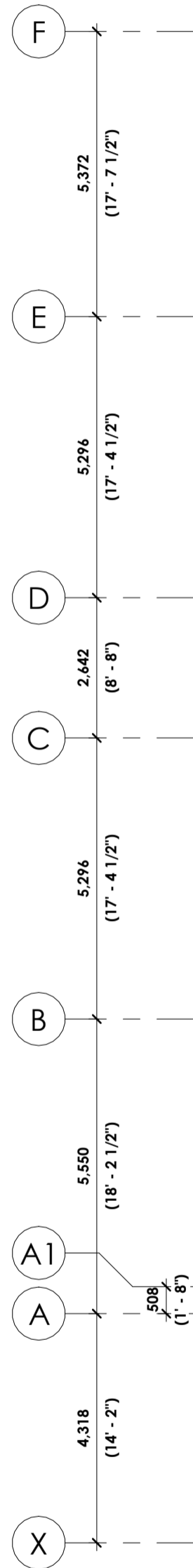
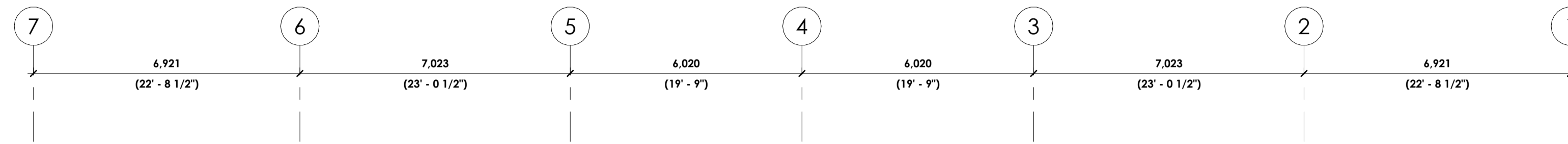
date | date **12/14/22**

scale | échelle **1 : 100**



A2-121

#xxxxxx



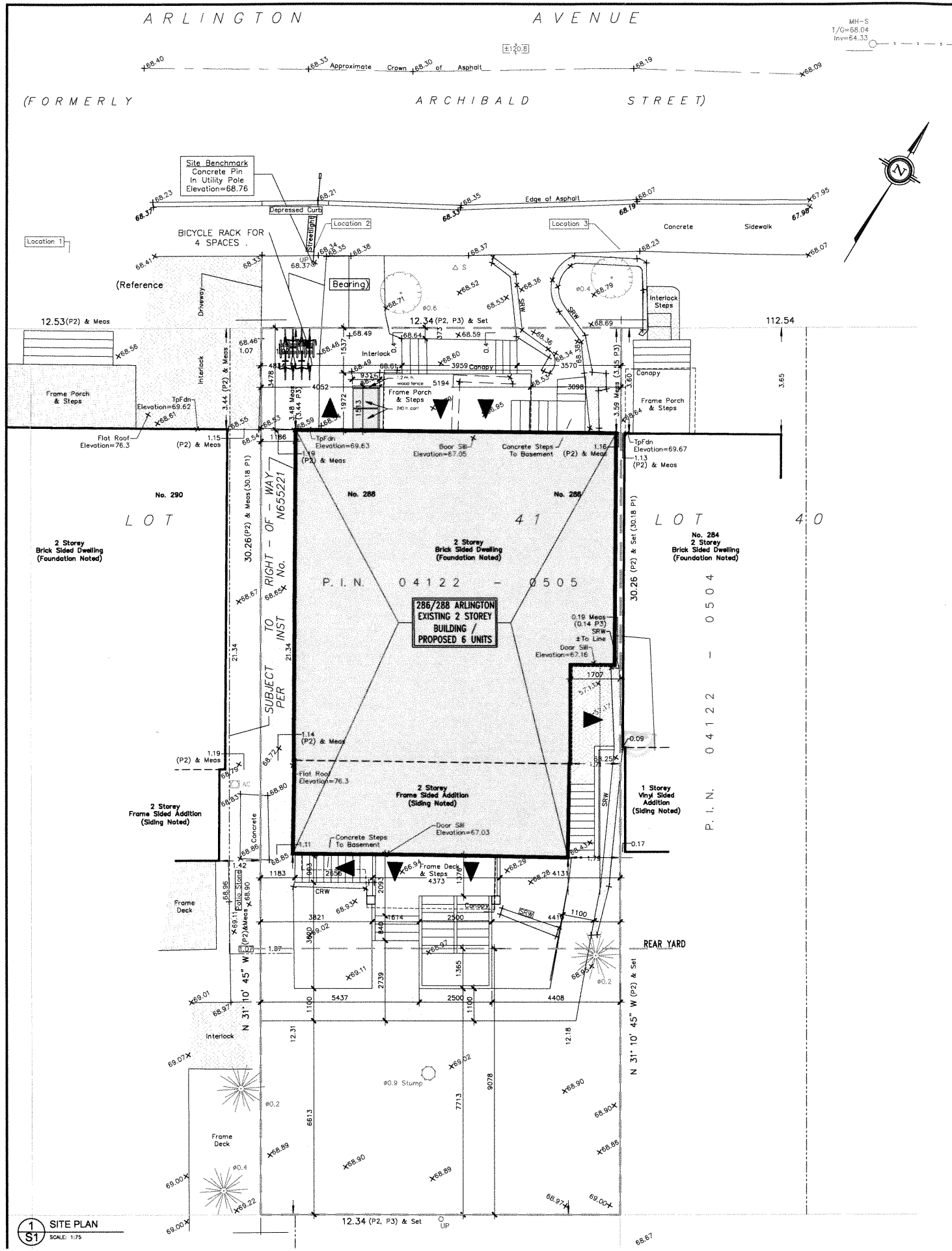


1 NORTH (LAURIER AVE W) ELEVATION
A4-100 1:100

MATERIAL LEGEND	
TAG	DESCRIPTION
1	CLEAR GLASS (WINDOW), COLOUR TBD, DOUBLE GLAZED, LOW E COATING
2	EXTERIOR LIGHTING
3	EXTERIOR GLASS GUARD, COLOUR TBD.
4	ALUMINUM PROFILED CLADDING.
5	5'-0" HIGH GLASS GUARDS
6	METAL SIGNAGE.
7	NOT USED.
8	NOT USED.
9	EXISTING RIB PROFILED PRECAST PANEL.
10	ACOUSTICAL LOUVRES AT MECHANICAL PENTHOUSE.
11	ENTRANCE TO UNDERGROUND PARKING, TO PEDESTRIAN LIGHTING AND ARCHITECTURAL FEATURES.
12	SPANDREL PANEL.
13	CLEAR GLASS (CURTAIN WALL), COLOUR TBD, DOUBLE GLAZED, LOW E COATING.
14	COLOURED GLASS FILM (WINDOW), COLOUR TBD, DOUBLE GLAZED, LOW E COATING.
15	EXISTING EXTERIOR BRICK.
16	METAL EXTRUSION CANOPY.
17	EXTERIOR GLASS PATIO DOORS, COLOUR TBD, DOUBLE GLAZED, LOW E COATING.
18	CLEAR GLASS (PATIO DOORS), COLOUR TBD, DOUBLE GLAZED, LOW E COATING.
19	ALLOW FOR NEW PUNCHED WINDOWS IN EXISTING PRECAST PANEL OPENINGS WHERE OPENINGS ARE NOT OBSTRUCTED BY COLUMNS.
20	SPA ENCLOSURE.
21	SLIDING WINDOWS.

- GENERAL NOTES:**
- ALL REMAINING EXISTING WINDOWS TO BE REPLACED.
 - ALLOW FOR INTAKE AND EXHAUST VENTS FOR SUITE FAN COIL UNITS, INTEGRATED INTO NEW EXTERIOR WINDOWS, JULIET BALCONIES AND/OR EXTERIOR WALLS.
 - COLOURED GLAZING TO BE FILM, INSTALLED ON-SITE.
 - BIRD FRIENDLY GLASS - AS PER CITY BIRD SAFE GUIDELINES. GUIDELINE 2 - TREATMENTS TO BE APPLIED TO A MINIMUM OF 90% OF THE GLASS WITHIN THE FIRST 16 METRES OF HEIGHT.
 - OPERABLE WINDOWS TO HAVE A MECHANISM CAPABLE OF CONTROLLING THE FREE SWINGING OR SLIDING OF THE OPENABLE PART OF THE WINDOW SO AS TO LIMIT ANY CLEAR UNOBSTRUCTED OPENING TO A SIZE THAT WILL PREVENT THE PASSAGE OF A SPHERE HAVING A DIAMETER MORE THAN 100mm, OR BE PRETECTED BY A GUARD NO LESS THAN 1075mm.

D07-12-23-0055



SITE PLAN
 1/2" = 1' (1:24)
 1/4" = 1' (1:48)
 1/8" = 1' (1:96)
 1/16" = 1' (1:192)
 1/32" = 1' (1:384)
 1/64" = 1' (1:768)
 1/128" = 1' (1:5376)
 1/256" = 1' (1:10752)
 1/512" = 1' (1:21504)
 1/1024" = 1' (1:43008)
 1/2048" = 1' (1:86016)
 1/4096" = 1' (1:720128)
 1/8192" = 1' (1:438072)
 1/16384" = 1' (1:876144)
 1/32768" = 1' (1:7500288)
 1/65536" = 1' (1:15000576)
 1/131072" = 1' (1:30001152)
 1/262144" = 1' (1:60002304)
 1/524288" = 1' (1:120004608)
 1/1048576" = 1' (1:240009216)
 1/2097152" = 1' (1:480018432)
 1/4194304" = 1' (1:960036864)
 1/8388608" = 1' (1:912073728)
 1/16777216" = 1' (1:8228673536)
 1/33554432" = 1' (1:74058067904)
 1/67108864" = 1' (1:664522611904)
 1/134217728" = 1' (1:598464543808)
 1/268435456" = 1' (1:5324064757184)
 1/536870912" = 1' (1:46634840763776)
 1/1073741824" = 1' (1:40029033955776)
 1/2147483648" = 1' (1:33423227147776)
 1/4294967296" = 1' (1:26817420339776)
 1/8589934592" = 1' (1:20211613531776)
 1/17179869184" = 1' (1:13605806723776)
 1/34359738368" = 1' (1:67229013447552)
 1/68719476736" = 1' (1:33614506723776)
 1/137438953472" = 1' (1:16807253361888)
 1/274877906944" = 1' (1:84036266723776)
 1/549755813888" = 1' (1:42018133361888)
 1/1099511627776" = 1' (1:21009066723776)
 1/2199023255552" = 1' (1:10504533361888)
 1/4398046511104" = 1' (1:52522666723776)
 1/8796093022208" = 1' (1:26261333361888)
 1/17592186044416" = 1' (1:13130666723776)
 1/35184372088832" = 1' (1:65653333361888)
 1/70368744177664" = 1' (1:32826666723776)
 1/140737488355328" = 1' (1:16413333361888)
 1/281474976710656" = 1' (1:82066666723776)
 1/562949953421312" = 1' (1:41033333361888)
 1/1125899906842624" = 1' (1:20516666723776)
 1/2251799813685248" = 1' (1:10258333361888)
 1/4503599627370496" = 1' (1:51291666723776)
 1/9007199254740992" = 1' (1:25645833361888)
 1/18014398509481984" = 1' (1:128229166723776)
 1/36028797018963968" = 1' (1:64114583361888)
 1/72057594037927936" = 1' (1:3205729166723776)
 1/14411518807585584" = 1' (1:1602864583361888)
 1/28823037615171168" = 1' (1:80143229166723776)
 1/57646075230342336" = 1' (1:40071614583361888)
 1/115292150460684672" = 1' (1:2003580729166723776)
 1/230584300921369344" = 1' (1:1001790364583361888)
 1/461168601842738688" = 1' (1:5008951829166723776)
 1/922337203685477376" = 1' (1:2504475914583361888)
 1/1844674407370954752" = 1' (1:125223795729166723776)
 1/3689348814741909504" = 1' (1:62611897864583361888)
 1/7378697629483819008" = 1' (1:3130594893229166723776)
 1/14757395258967638016" = 1' (1:1565297446614583361888)
 1/29514790517935276032" = 1' (1:7826487233229166723776)
 1/59029581035870552064" = 1' (1:3913243616614583361888)
 1/118059162071741104128" = 1' (1:195662180830729166723776)
 1/236118324143482208256" = 1' (1:97831090415364583361888)
 1/472236648286964416512" = 1' (1:4891554520768229166723776)
 1/944473296573928833024" = 1' (1:2445777260384114583361888)
 1/1888946593147857666048" = 1' (1:122288863019205729166723776)
 1/3777893186295715332096" = 1' (1:61144431504602864583361888)
 1/7555786372591430664192" = 1' (1:30572215752301429166723776)
 1/15111572745182861328384" = 1' (1:15286107876150714583361888)
 1/30223145490365722656768" = 1' (1:764305393807535729166723776)
 1/60446290980731445313536" = 1' (1:382152696903767864583361888)
 1/120892581961462890627072" = 1' (1:19107634845188393229166723776)
 1/241785163922925781254144" = 1' (1:9553817422594196614583361888)
 1/483570327845851562508288" = 1' (1:477690871129709830729166723776)
 1/967140655691703125017568" = 1' (1:238845435564849915364583361888)
 1/1934281311383406250351536" = 1' (1:11942271778242495768229166723776)
 1/3868562622766812507030072" = 1' (1:597113588912124788364583361888)
 1/7737125245533625014060144" = 1' (1:29855679445606239418229166723776)
 1/15474250491067250281212288" = 1' (1:1492783972280311970914583361888)
 1/3094850098213450056242576" = 1' (1:74639198611406239418229166723776)
 1/6189700196426900112485152" = 1' (1:3731959930720311970914583361888)
 1/1237940039285380022490304" = 1' (1:18659799653601559854583361888)
 1/2475880078570760044980608" = 1' (1:932989982680077992729166723776)
 1/4951760157141520089961216" = 1' (1:466494991340038996364583361888)
 1/9903520314283040179922432" = 1' (1:23324749567001949818229166723776)
 1/1980704062856608035944864" = 1' (1:1166237478350097490914583361888)
 1/3961408125713216071889728" = 1' (1:5831187391750047454583361888)
 1/7922816251426432143779456" = 1' (1:291559369587502372729166723776)
 1/1584563250285286287555904" = 1' (1:145779684793751186364583361888)
 1/3169126500570572575111808" = 1' (1:72889842396875593166723776)
 1/6338253001141145150223616" = 1' (1:36444921198437796583361888)
 1/1267650600228229030044732" = 1' (1:1822246059921889829166723776)
 1/2535301200456458060089464" = 1' (1:911123029960944914583361888)
 1/507060240091291612017888" = 1' (1:45556151498047245729166723776)
 1/1014120480182583240357776" = 1' (1:22778075749023622864583361888)
 1/2028240960365166480715552" = 1' (1:11389037874511811429166723776)
 1/4056481920730332961431104" = 1' (1:5694518937255905714583361888)
 1/8112963841460665922862208" = 1' (1:284725946862795285729166723776)
 1/16225927682921331845724416" = 1' (1:142362973431397642864583361888)
 1/3245185536584266369144832" = 1' (1:711814867156698821429166723776)
 1/6490371073168532738289664" = 1' (1:355907433578349410714583361888)
 1/12980742147377065476579328" = 1' (1:17795371678917470535729166723776)
 1/25961484294754130953158656" = 1' (1:889768583945873526714583361888)
 1/51922968589508261906317312" = 1' (1:44488429197293676335729166723776)
 1/103845937179016523812644624" = 1' (1:2224421459864683816714583361888)
 1/207691874358033047625289248" = 1' (1:111221072993234190835729166723776)
 1/41538374871606609525057856" = 1' (1:55610536496617095418229166723776)
 1/83076749743213219050117112" = 1' (1:2780526824830854770914583361888)
 1/166153499486426438100234224" = 1' (1:13902634124154273854583361888)
 1/332306998972852876200468448" = 1' (1:695131706207713692729166723776)
 1/664613997945705752400936992" = 1' (1:347565853103856846364583361888)
 1/1329227995891411504801873984" = 1' (1:17378292655192842318229166723776)
 1/2658455991782823009603747968" = 1' (1:868914632759642115864583361888)
 1/5316911983565646019207495936" = 1' (1:434457316379821057829166723776)
 1/10633823967131292038414911872" = 1' (1:217228658189910528914583361888)
 1/21267647934262584076829823544" = 1' (1:1086143290949552644583361888)
 1/42535295868525168153659647088" = 1' (1:54307164547247762229166723776)
 1/85070591737050336307319294176" = 1' (1:271535822736238811429166723776)
 1/170141183474100672614638783352" = 1' (1:135767911368119405714583361888)
 1/340282366948201345229277566704" = 1' (1:6788395568362380285729166723776)
 1/680564733896402690458555133408" = 1' (1:33941977841811901429166723776)
 1/1361129467792805380917110266816" = 1' (1:16970988920905950714583361888)
 1/2722258935585610761834220533632" = 1' (1:848549446045297535729166723776)
 1/5444517871171221523668441067264" = 1' (1:424274723022648767864583361888)
 1/10889035742342443047336882134528" = 1' (1:212137361511324383914583361888)
 1/2177807148468488609467376426896" = 1' (1:10606868075566219195729166723776)
 1/4355614296936977218934752933792" = 1' (1:530343403778310959714583361888)
 1/8711228593873954437869505867584" = 1' (1:265171701889155479864583361888)
 1/17422457187747908877739011735168" = 1' (1:132585850944577739914583361888)
 1/34844914375495817755478023470336" = 1' (1:6629292547228886995729166723776)
 1/69689828750991635510956046940672" = 1' (1:3314646273614443497864583361888)
 1/139379657501933271021912093801344" = 1' (1:1657323136807221748914583361888)
 1/278759315003866542043824187602688" = 1' (1:8286615684403610744583361888)
 1/557518630007733084087648375205376" = 1' (1:414330784220180537229166723776)
 1/1115037260015461668175527400410752" = 1' (1:207165392110090268614583361888)
 1/2230074520031323336351105480821504" = 1' (1:10358269605504513430729166723776)
 1/4460149040062646727022210961643008" = 1' (1:5179134802752256715864583361888)
 1/8920298080125133454044421923286016" = 1' (1:2589567401376128357864583361888)
 1/17840596160250268908088843846572224" = 1' (1:1294783700688064178914583361888)
 1/35681192320500537816177687693144448" = 1' (1:6473918503440320894583361888)
 1/7136238464100107563235537381828896" = 1' (1:323695925172016044729166723776)
 1/14272476928200211126460675636657932" = 1' (1:161847962586008022364583361888)
 1/28544953856400422252921327273315864" = 1' (1:809224812730040111829166723776)
 1/570899077128008445055826545466317296" = 1' (1:404612406365020055914583361888)
 1/1141798154256016901111713109132635584" = 1' (1:20230620318251002795729166723776)
 1/22835963085120338022234262182567115168" = 1' (1:10115310159125501397864583361888)
 1/4567192617024067604446852436513430336" = 1' (1:5057655079562750698914583361888)
 1/913438523404813520889370487302686672" = 1' (1:25288275397813753494583361888)
 1/182687704680962704177874097460573344" = 1' (1:1264413769890687674729166723776)
 1/365375409361925408355748194921146688" = 1' (1:63220688494534383714583361888)
 1/730750818723850816711495989842313376" = 1' (1:3161034424726719185729166723776)
 1/146150163744770163442299197968466672" = 1' (1:1580517212363359592864583361888)
 1/292300327489540326884597995936933344" = 1' (1:7902586061816797964583361888)
 1/584600654979080653769195991873866688" = 1' (1:395129303090839898229166723776)
 1/1169201309958161317538391973747333376" = 1' (1:19756465154541994914583361888)
 1/233840261991632263507678394749466672" = 1' (1:987823257727209747864583361888)
 1/467680523983264527015356789498933344" = 1' (1:493911628863604873914583361888)
 1/935361047966529054030713578997866688" = 1' (1:24695581443180243695729166723776)
 1/1870722095933058108061427577995733376" = 1' (1:12347790721590121847864583361888)
 1/3741444191866116216122855155999466752" = 1' (1:61738953607950610714583361888)
 1/748288838373223243224571111999933344" = 1' (1:3086947680397530535729166723776)
 1/1496577676746446486449422237999866688" = 1' (1:1543473840198765267864583361888)
 1/2993155353492892972898844475999733376" = 1' (1:771736920099382633914583361888)
 1/5986310706985785945797688951999466752" = 1' (1:38586846004969131695729166723776)
 1/1197262141397157189159777790399933344" = 1' (1:19293423002484565847864583361888)
 1/2394524282794314378319555580799866688" = 1' (1:96467115001242829214583361888)
 1/4789048565588628756639111161599733376" = 1' (1:4823355750062141460729166723776)
 1/9578097131177257513278222323199466688" = 1' (1:2411677875031070730364583361888)
 1/1915619426235451425655444446399933344" = 1' (1:120583893751535036514583361888)
 1/3831238852470902851310888892799866688" = 1' (1:6029194687576751825729166723776)
 1/7662477704941805702621777785599733376" = 1' (1:3014597343788375912864583361888)
 1/15324954409883611405243555571199466688" = 1' (1:15072986718941879564583361888)
 1/3064990881976722281048711142399933344" = 1' (1:75364933594709397814583361888)
 1/6129981763953444562097422284799866688" = 1' (1:3768246679735469890729166723776)
 1/1225996352790688912419484457599733376" = 1' (1:1884123339867734945364583361888)
 1/2451992705581377824838969115199466688" = 1' (1:9420616699333672472729166723776)
 1/4903985411162755649677938230399933344" = 1' (1:4710308349666836236364583361888)
 1/9807970822325511299355876460799866688" = 1' (1:235515417483341811814583361888)
 1/1961594164465022598711175321199733376" = 1' (1:11775770874167090590729166723776)
 1/392318832893004519742235064399466688" = 1' (1:5887885437083545295364583361888)
 1/784637665786009039484470128799933344" = 1' (1:2943942718541772647864583361888)
 1/1569275331772018079688940257599866688" = 1' (1:1471971359270886323914583361888)
 1/3138550663544036159377980515199733376" = 1' (1:73598567963544316195729166723776)
 1/6277101327088072318755961030399466688" = 1' (1:36799283981772158097864583361888)
 1/12554202651776144637511922060799866688" = 1' (1:18399641990886079048914583361888)
 1/2510840530355228927502384412199733376" = 1' (1:919982