

METRIC
DISTANCES AND COORDINATES SHOWN ON THIS PLAN ARE IN METRES
AND CAN BE CONVERTED TO FEET BY DIVIDING BY 0.3048

PLAN PREPARED FOR COMMITTEE
OF ADJUSTMENT PURPOSES
SEPTEMBER 24, 2021.

SCHEDULE					
LOT WIDTH (M)	AREA (SQ.M.)	PART	LOT	PLAN	PIN
15.315	531.6	1	PART OF 23	CONCESSION 11	ALL OF 04455-0178
15.315	531.6	2			
14.78	516.9	3			
15.83	546.1	4			

NOTE: LOT WIDTHS AS SHOWN HAVE BEEN CALCULATED
PER CITY OF OTTAWA ZONING BYLAW 2008-250
CONSOLIDATION (PART 1, DEFINITIONS-SEC. 54).

I REQUIRE THIS PLAN TO BE
DEPOSITED UNDER THE
LAND TITLES ACT.

DATE _____

REPRESENTATIVE FOR
LAND REGISTRAR FOR THE
LAND TITLES DIVISION OF
OTTAWA - CARLETON (N° 4)

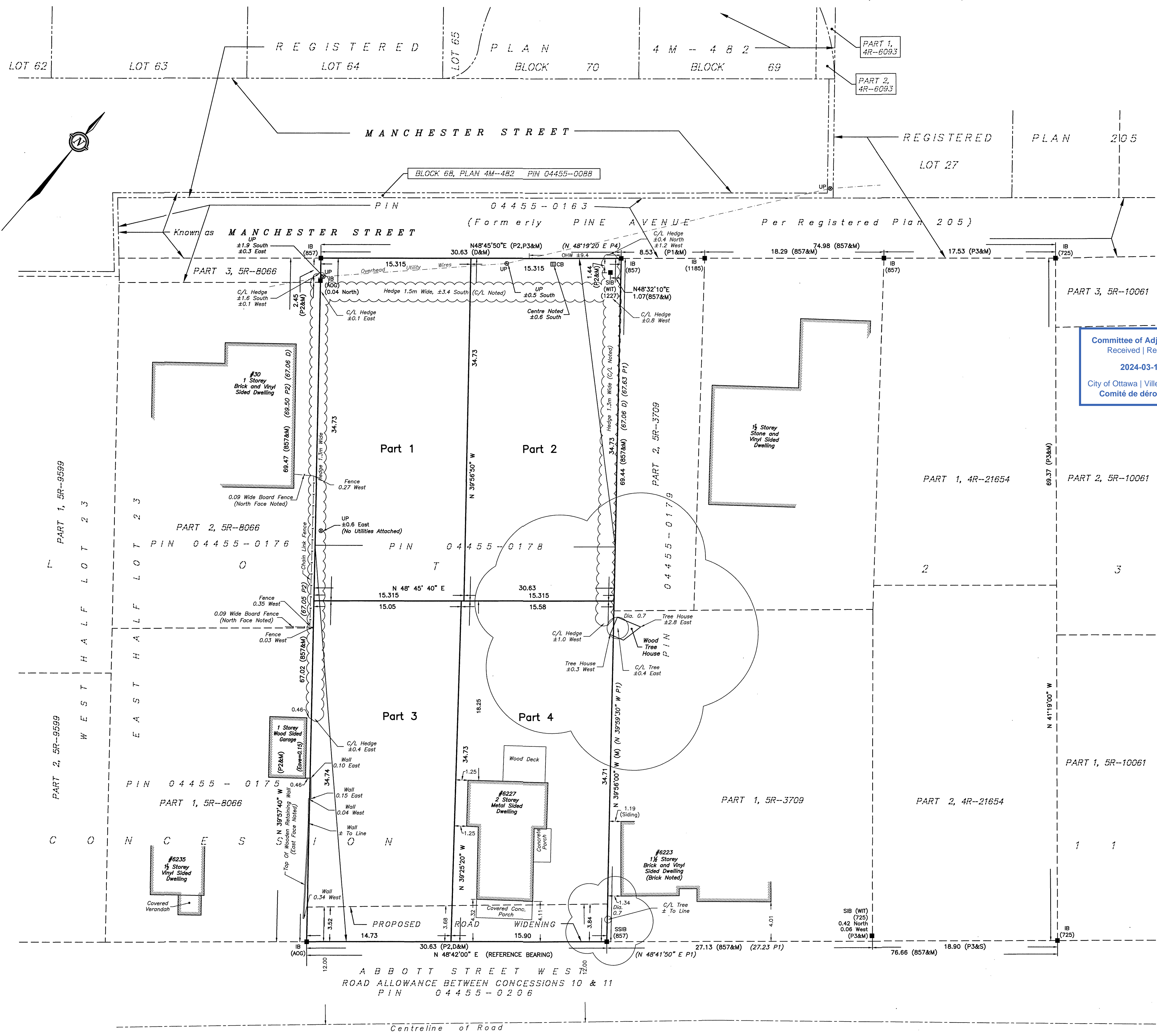
D. S. McMORRAN, O.L.S.

PLAN OF SURVEY OF
PART OF LOT 23
CONCESSION 11
GEOGRAPHIC TOWNSHIP OF GOULBOURN
CITY OF OTTAWA

SCALE 1 : 200

0 5 10 20 metres

FAIRHALL, MOFFATT & WOODLAND LIMITED
ONTARIO LAND SURVEYORS



NOTES

- BEARINGS ARE ASTRONOMIC, DERIVED FROM THE NORTHERLY LIMIT OF ABBOTT STREET WEST SHOWN TO BE N 48°42'00" E ON PLAN 5R-8066.
- DISTANCES ARE GROUND AND CAN BE CONVERTED TO GRID BY MULTIPLYING BY THE COMBINED SCALE FACTOR *****.

Committee of Adjustment
Received | Reçu le
2024-03-13
City of Ottawa | Ville d'Ottawa
Comité de dérogation

- LEGEND**
- - SURVEY MONUMENT SET
 - - SURVEY MONUMENT FOUND
 - SIB - STANDARD IRON BAR
 - SSIB - SHORT STANDARD IRON BAR
 - IB - IRON BAR
 - (WIT) - WITNESS
 - PIN - PROPERTY IDENTIFIER NUMBER
 - (P1) - PLAN 5R-3709
 - (P2) - PLAN 5R-8066
 - (P3) - PLAN 4R-21654
 - (D) - INST.GB10659
 - (S) - SET
 - (M) - MEASURED
 - (725) - ARNETT, KENNEDY, RIDDELL & JASON LTD., O.L.S.
 - (857) - FAIRHALL, MOFFATT & WOODLAND LIMITED, O.L.S., (REF. 347-11 GOULBOURN)
 - (1227) - L.E. ROSS, O.L.S.
 - (1185) - MCINTOSH PERRY SURVEYING INC., O.L.S.
 - (AOG) - ANNIS, O'SULLIVAN, VOLLEBECK LTD., O.L.S.
 - ⊙ UP - UTILITY POLE
 - ▣ CB - CATCHBASIN
 - OHW - OVERHEAD UTILITY WIRES
 - ⊕ - DECIDUOUS TREE
 - DIA. - DIAMETER

SURVEYOR'S CERTIFICATE

I CERTIFY THAT:

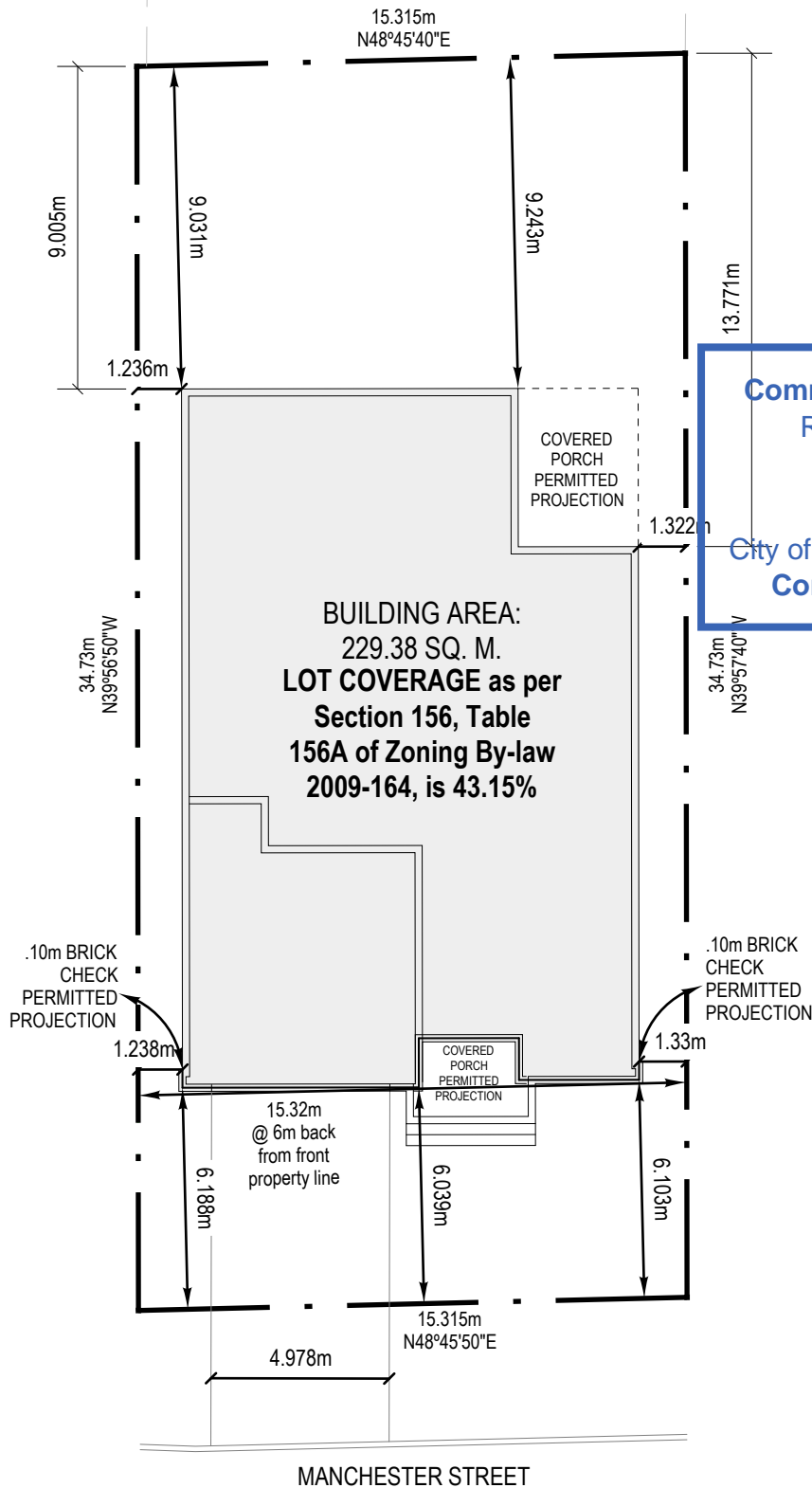
- THIS SURVEY AND PLAN ARE CORRECT AND IN ACCORDANCE WITH THE SURVEYS ACT, THE SURVEYORS ACT, THE LAND TITLES ACT AND THE REGULATIONS MADE UNDER THEM.
- THE SURVEY WAS COMPLETED ON

Sept 24/2021
DATE

D. S. McMORRAN
ONTARIO LAND SURVEYOR

**Fairhall
Moffatt &
Woodland**
OTTAWA
ONTARIO LAND SURVEYORS
Surveying and Land Information Services
100-600 TERRY FOX DRIVE, KANATA, ONTARIO K2L 4B6
TEL: (613) 591-2990 FAX: (613) 591-1495
www.fmw.com

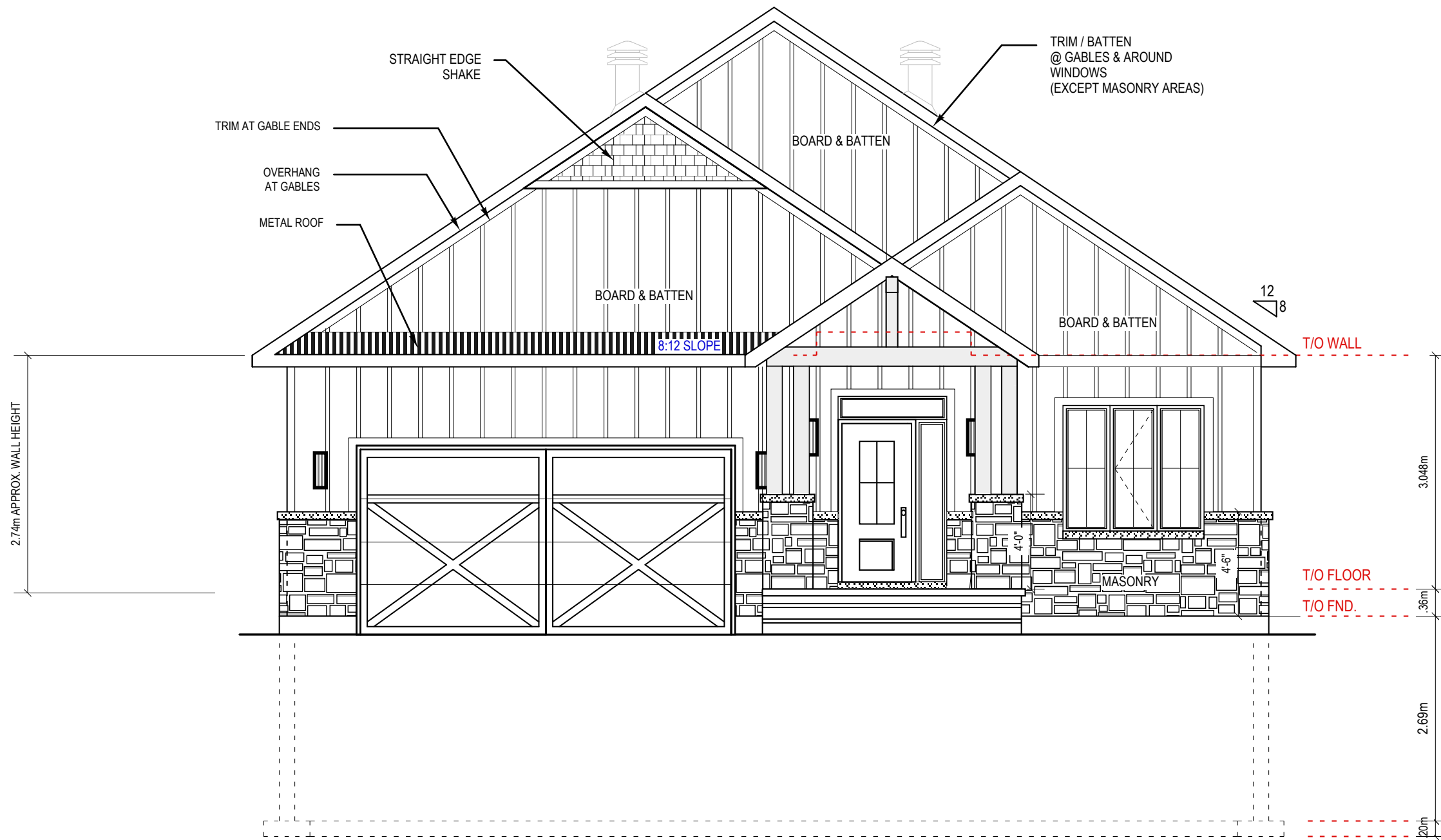
JOB No.
A B 2 2 8 0 0
E 350034 , N5013195
REFERENCE No.
347(a) - 11 GOULBOURN
S:\085\A22800\DWG\drp228ab.dwg (cnr)



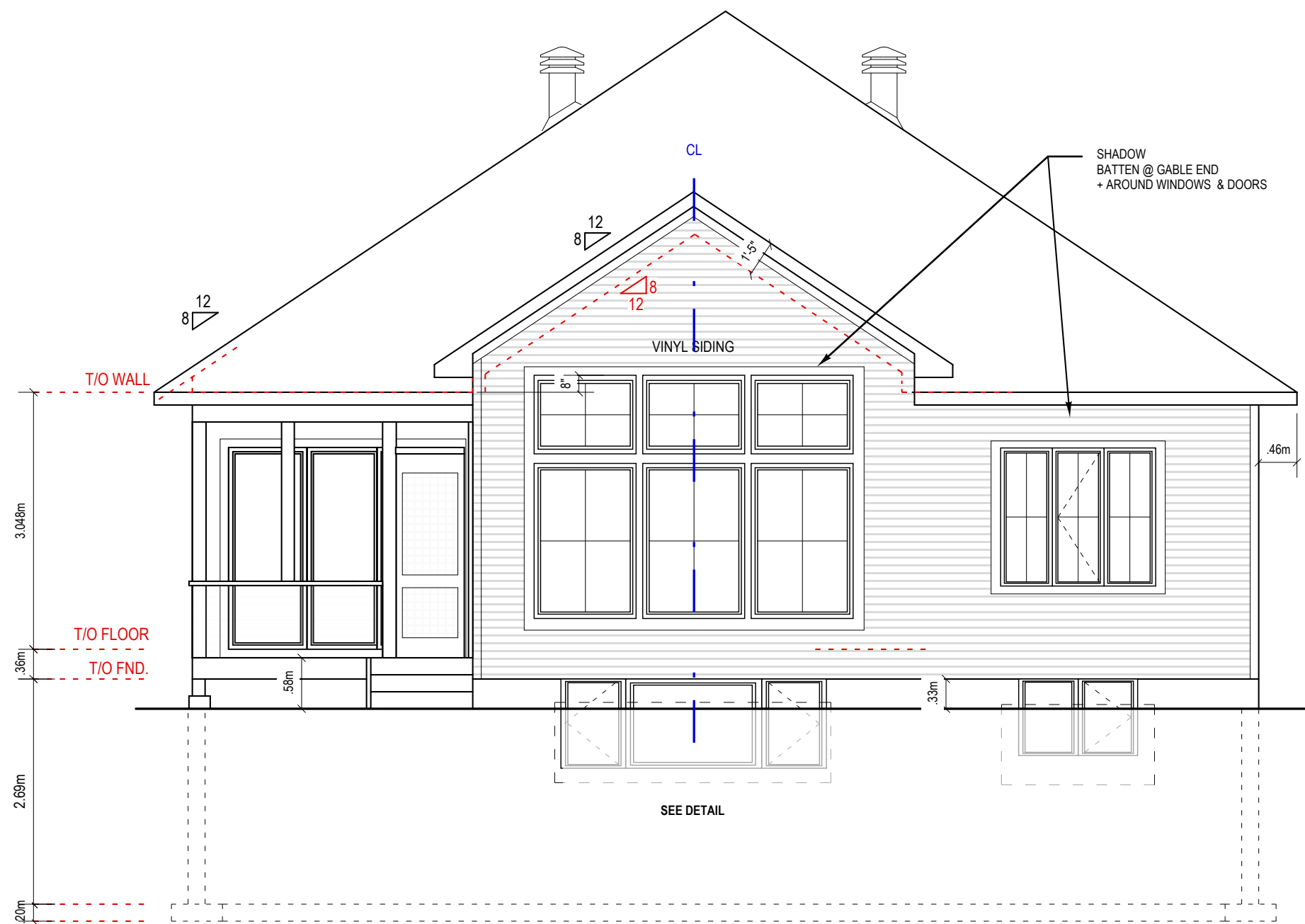
Committee of Adjustment
Received | Reçu le
2024-03-13
City of Ottawa | Ville d'Ottawa
Comité de dérogation

SITE PLAN		
PART 1 OF LOT 23, CONC. 11	SCALE=1:200	DATE: MAR. 7, 2024
28 MANCHESTER STREET STITTSVILLE, ON.	LOT AREA: 531.6 SQ. M. BUILDING AREA: 229.38 SQ. M. LOT COVERAGE: 43.15%	REV. DATES:

Committee of Adjustment
 Received | Reçu le
 2024-03-13
 City of Ottawa | Ville d'Ottawa
 Comité de dérogation

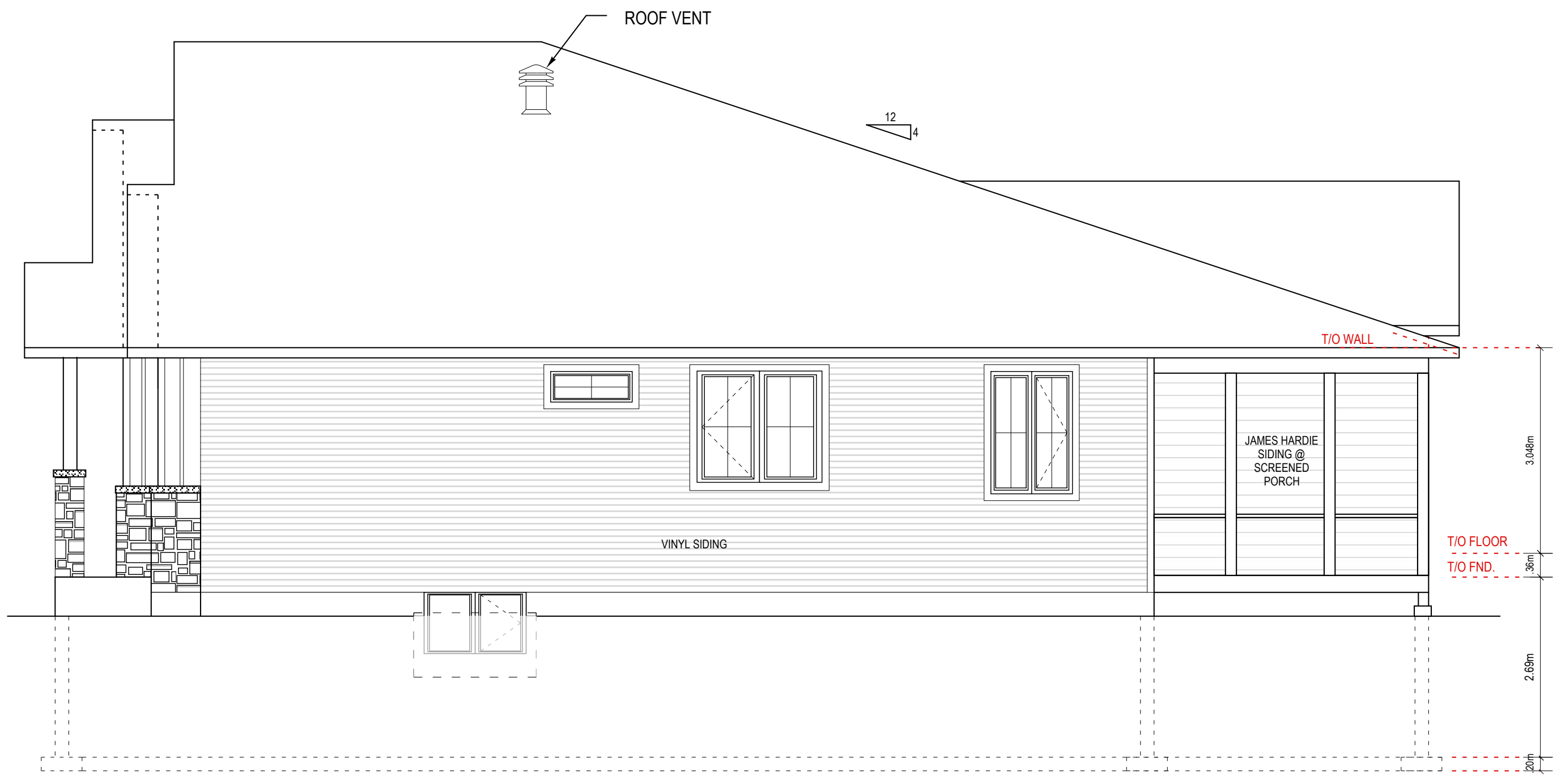


FRONT ELEVATION

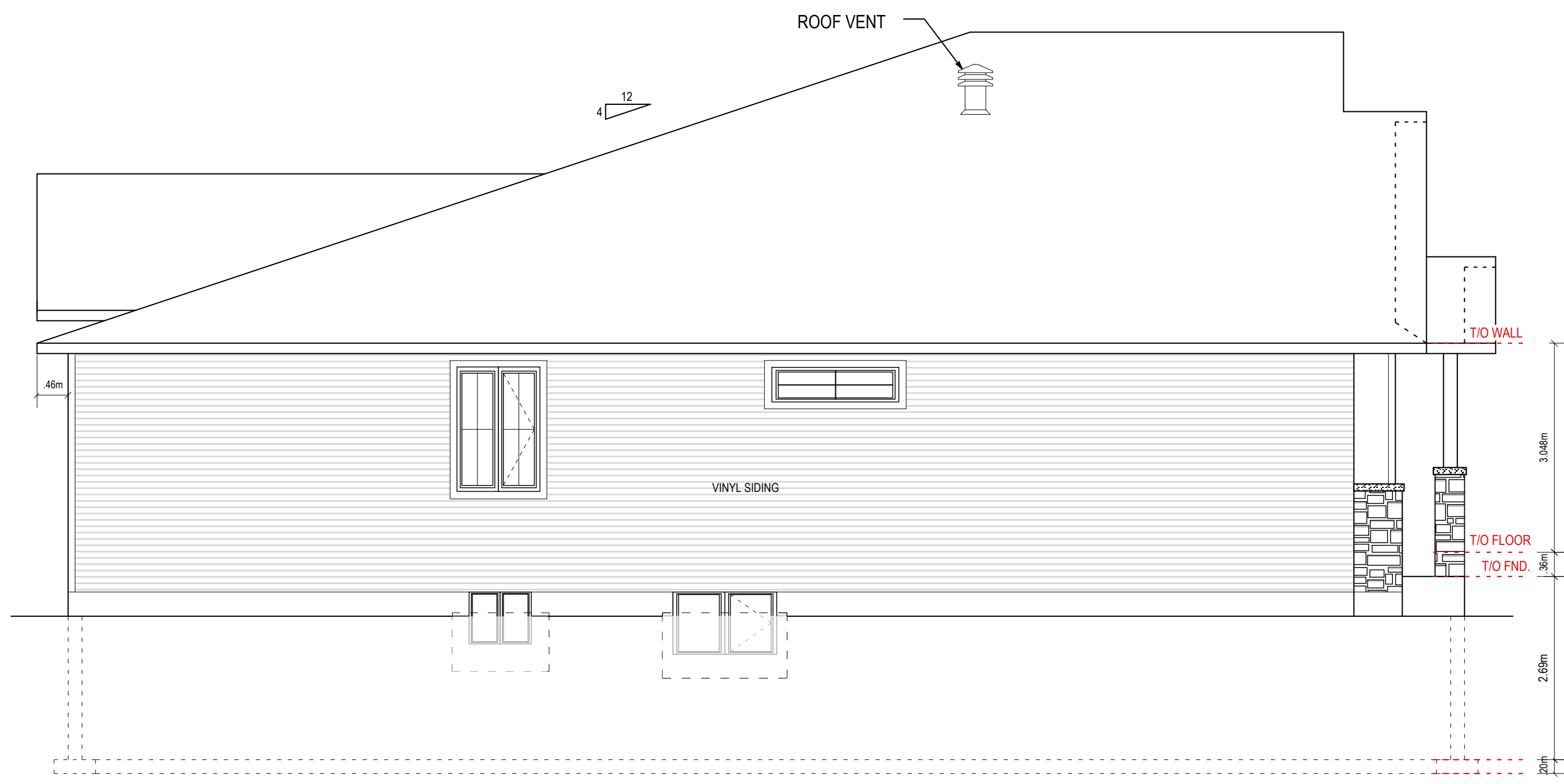


REAR ELEVATION

28 MANCHESTER
 STITTSVILLE, ONTARIO



RIGHT ELEVATION



LEFT ELEVATION

28 MANCHESTER
STITTSVILLE, ONTARIO