

Committee of Adjustment  
Received | Reçu le  
2024-03-25  
City of Ottawa | Ville d'Ottawa  
Comité de dérogation

SCHEDULE				
AREA (Sq.m.)	PART	LOT	PLAN	PIN
95.3	1	PART OF 17	4M-878	PART OF 03902-0069

PLAN OF SURVEY OF  
PART OF LOT 17  
REGISTERED PLAN 4M-878  
CITY OF OTTAWA  
Surveyed by Annis, O'Sullivan, Vollebek Ltd.

Scale 1 : 200  
8.0 6.0 4.0 2.0 0 4 8 Metres

The intended plot size of the plan is 762 mm in width by 762 mm in height when plotted at a scale of 1:200.

Metric  
DISTANCES AND COORDINATES SHOWN ON THIS PLAN  
ARE IN METRES AND CAN BE CONVERTED TO FEET BY  
DIVIDING BY 0.3048.

Surveyor's Certificate  
I CERTIFY THAT:  
1. This survey and plan are correct and in accordance with the Surveys Act, the Surveyors Act and the Land Titles Act and the regulations made under them.  
2. The survey was completed on the \_\_ day of \_\_\_\_\_, 2023.

Date \_\_\_\_\_ E.H. Herweyer  
Ontario Land Surveyor

This plan of survey relates to AOLS Plan Submission Form Number V-

Notes & Legend

- | Denotes |                                  |
|---------|----------------------------------|
| —□—     | Survey Monument Planted          |
| —■—     | Survey Monument Found            |
| SIB     | Standard Iron Bar                |
| SSIB    | Short Standard Iron Bar          |
| IB      | Iron Bar                         |
| (WIT)   | Witness                          |
| Mees.   | Measured                         |
| (AOG)   | Annis, O'Sullivan, Vollebek Ltd. |
| (PI)    | Registered Plan 4M-878           |
| (P2)    | (AOG) Plan October 2, 2020       |
| (P3)    | Plan 4R-9460                     |

Distances shown on this plan are ground distances and can be converted to grid distances by multiplying by the combined scale factor of 0.999935.

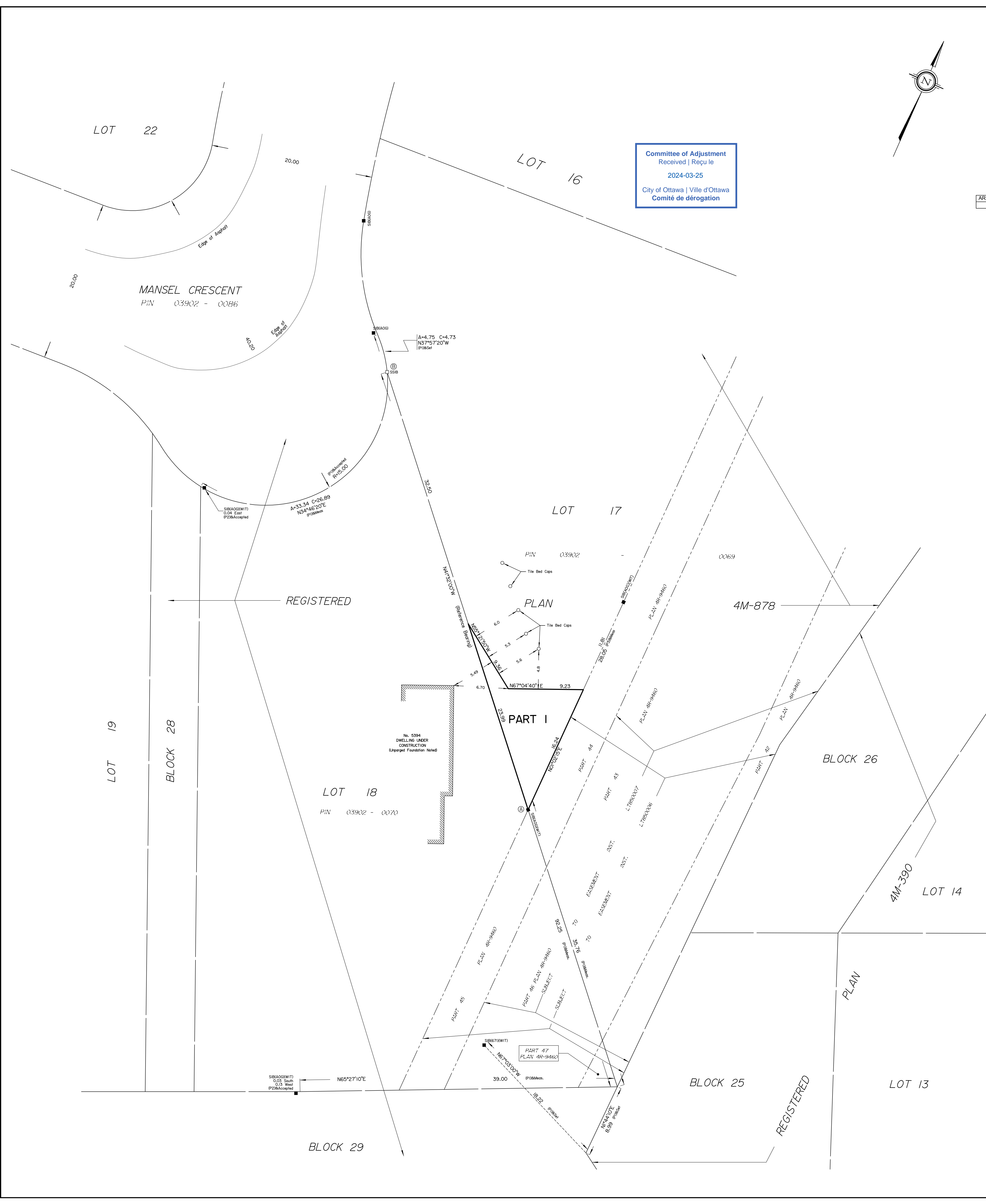
Bearings are grid, derived from Can-Net 2016 Real Time Network GPS observations on reference points A and B, shown hereon, having a bearing of N41°32'00"W and are referenced to Specified Control Points 01919791338 and 01919871649, MTM Zone 9 (76°30' West Longitude) NAD-83 (original).

Coordinates are derived from Can-Net 2016 Real Time Network GPS observations referenced to Specified Control Points 01919791338 and 01919871649, MTM Zone 9 (76°30' West Longitude) NAD-83 (original).

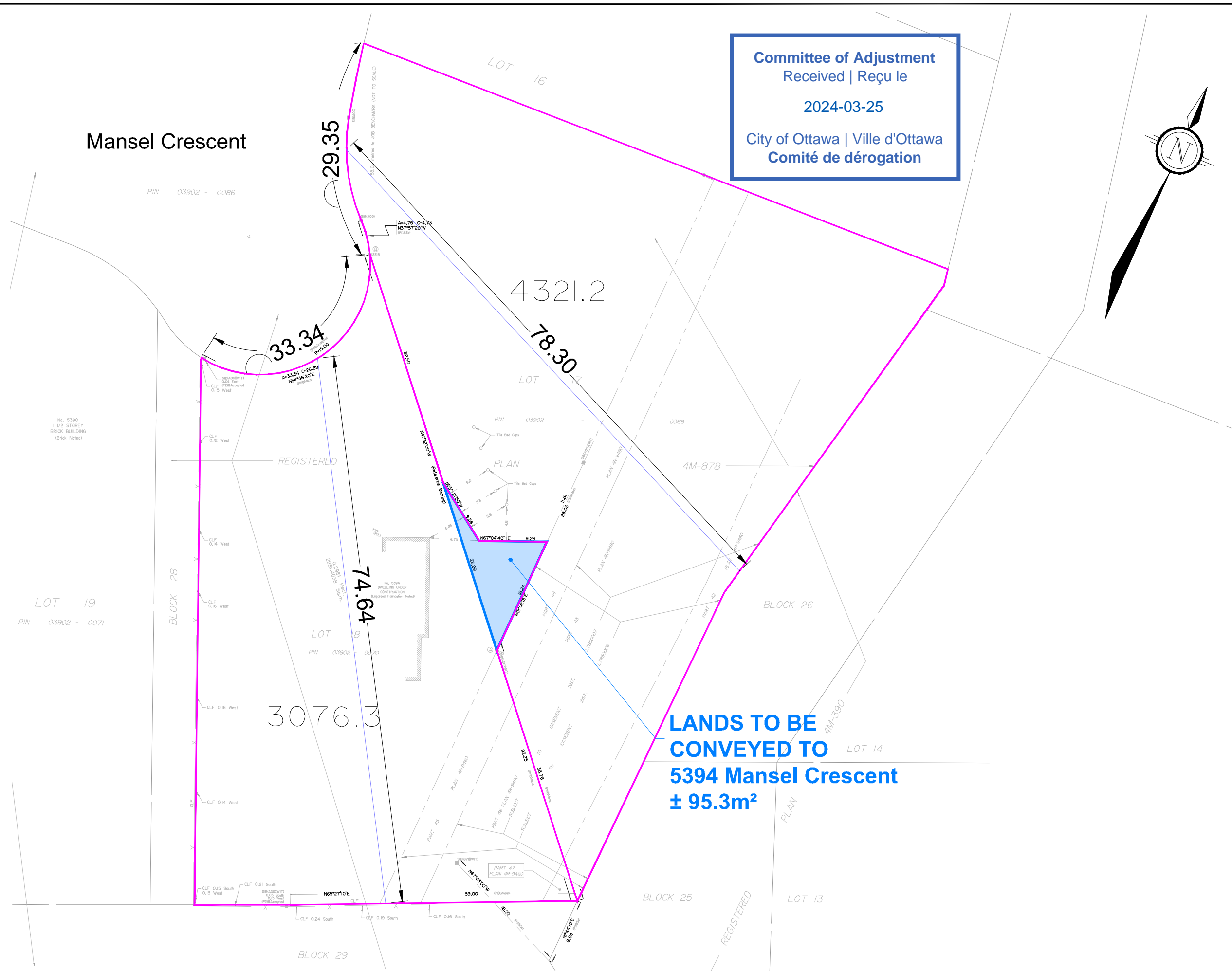
Coordinate values are to urban accuracy in accordance with O. Reg. 216/10.

.01919791338	Northing	5006055.96	Easting	346140.91
.01919871649	Northing	5007189.87	Easting	372435.05
.Point A	Northing	5009513.43	Easting	367995.72
.Point B	Northing	5009555.72	Easting	367958.27

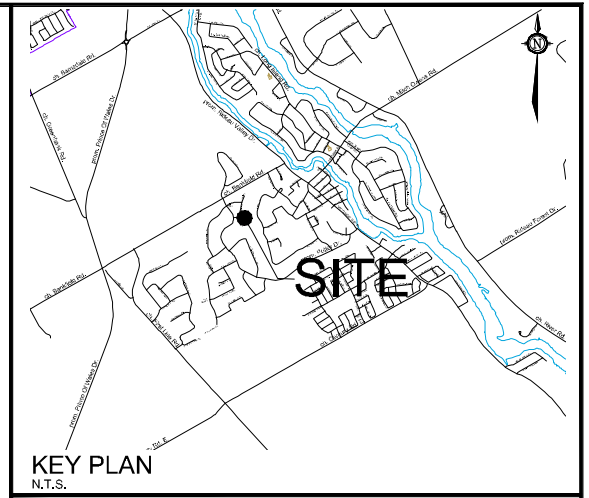
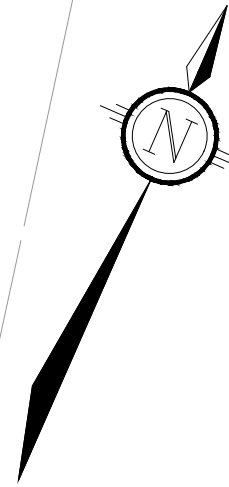
Caution: Coordinates cannot, in themselves, be used to re-establish corners or boundaries shown on this plan.



M:\2021\22209\CAD\Overall\Planning\Figures\122209-Fig.dwg, FIG, Mar 04, 2024 - 2:16pm, wslloss



Committee of Adjustment  
 Received | Reçu le  
 2024-03-25  
 City of Ottawa | Ville d'Ottawa  
 Comité de dérogation



# CONSENT APPLICATION

5394-5398 MANSEL CRESCENT

PART OF LOT 17  
 REGISTERED PLAN 4M-878  
 CITY OF OTTAWA

1 : 500

No.	REVISION	DATE	BY
1.	ISSUED FOR SUBMISSION	MAR 04/24	MV

LANDS TO BE  
 CONVEYED TO  
 5394 Mansel Crescent  
 ± 95.3m<sup>2</sup>

**NOVATECH**  
 Engineers, Planners & Landscape Architects  
 Suite 200, 240 Michael Cowpland Drive  
 Ottawa, Ontario, Canada K2M 1P6  
 Telephone (613) 254-9643  
 Facsimile (613) 254-5867  
 Website www.novatech-eng.com

ISSUED  
 MARCH, 2024  
 PROJECT No.  
 122209  
 DRAWING No.  
 122209-FIG