

275 MACLAREN STREET

Committee of Adjustment
Received | Reçu le
2024-04-09
City of Ottawa | Ville d'Ottawa
Comité de dérogation

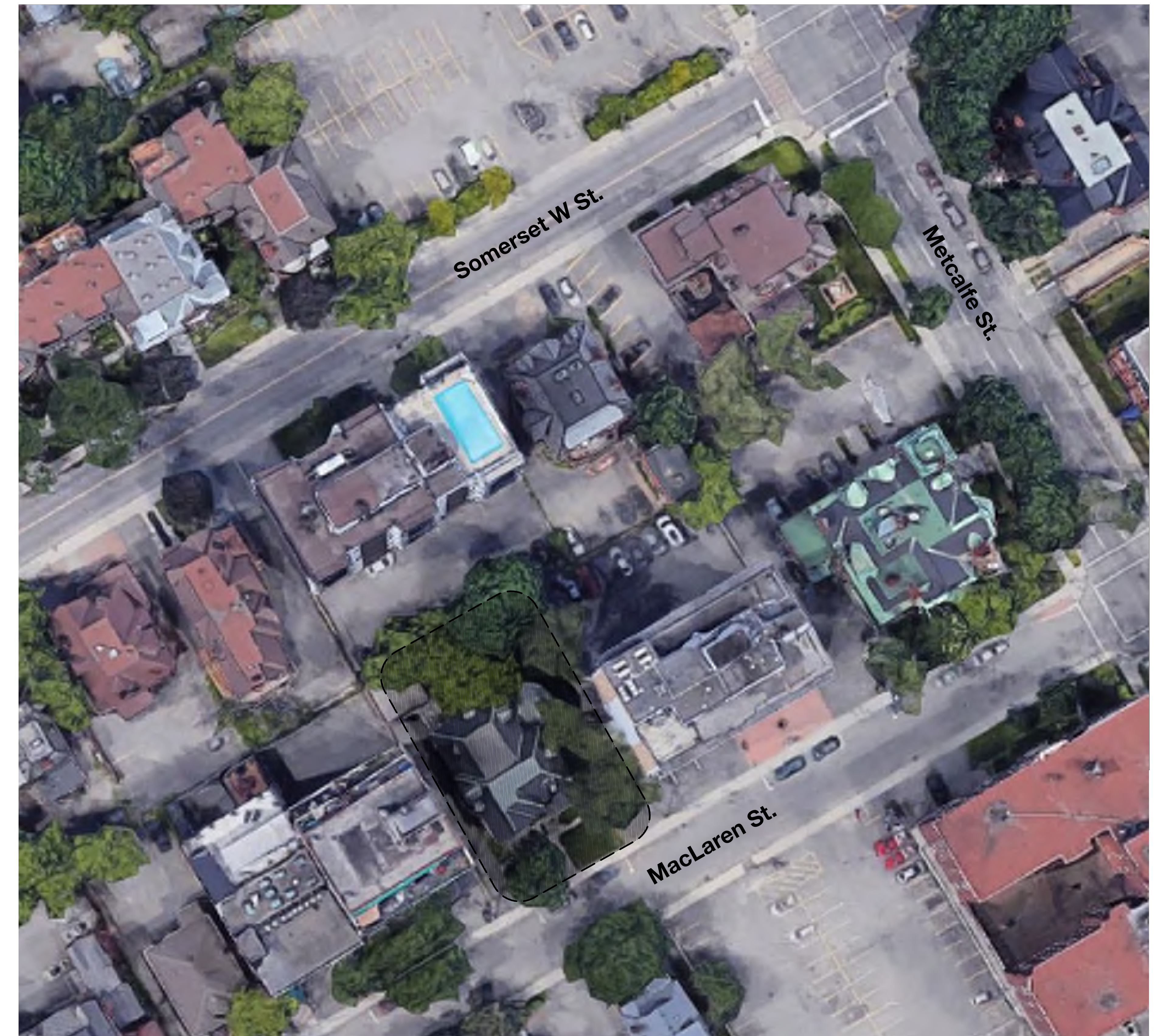


LASHLEY
+ASSOCIATES
LANDSCAPE ARCHITECTURE
AND SITE ENGINEERING
200-260 GLADSTONE AVENUE
OTTAWA, ON K1Y 3E5
T 613 233 8579
F 613 233 4051
W LashleyLA.com
E Mail@LashleyLA.com

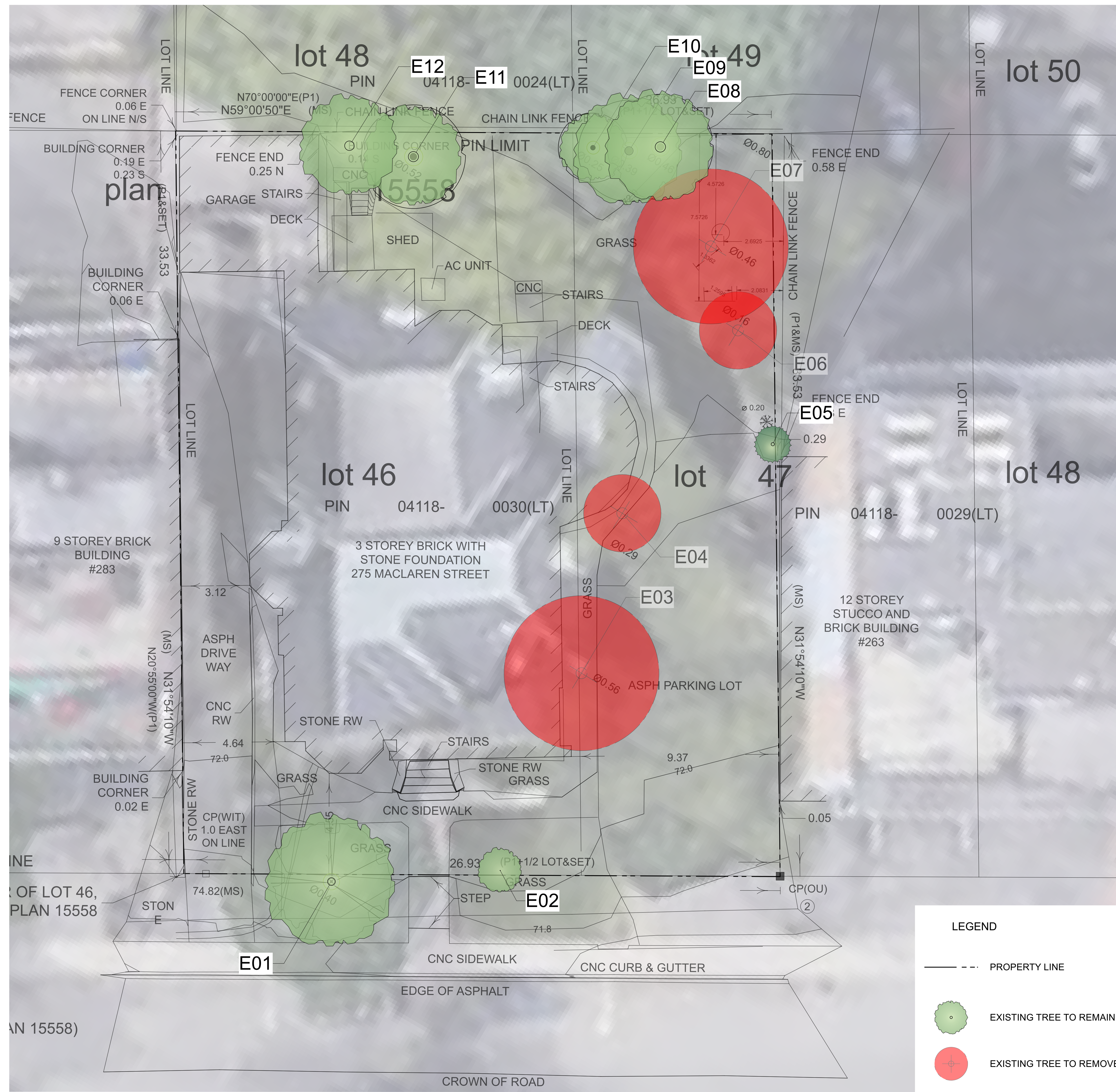
275 MACLAREN STREET
OTTAWA, ONTARIO
ISSUED FOR
COMMITTEE OF ADJUSTMENT
20 OCTOBER 2023

DRAWING INDEX

PRE-DEVELOPMENT PLAN TP -1
POST-DEVELOPMENT PLAN TP-2
PLANTING PLAN L-01



KEY PLAN 



1 TP-1 TREE CONSERVATION PLAN
Scale: 1:75

Existing Tree List

ID	Botanical Name	Common Name	DBH	Condition	Action	Notes
E01	<i>Acer platanoides</i>	Crismon King Norway Maple	0.35	Poor	Retain	Large vertical split in trunk. Significant splitting in branches above crotch. Some response wood around previous pruning wounds. Dead branches in canopy.
E02	<i>Quercus macrocarpa</i>	Burr Oak	0.02	Good	Retain	Good. Young sapling.
E03	<i>Ulmus pumila</i>	Siberian Elm	0.52	Average	Remove	Imbalanced crown, heavy lean to east over driveway. Dead branches in upper canopy. Compression roots raising driveway and tension roots likely attached to building foundation.
E04	<i>Ulmus pumila</i>	Siberian Elm	0.3	Good	Remove	Dead branches in upper canopy. Well-developed buttress roots.
E05	<i>Thuja occidentalis</i>	Eastern White Cedar	0.15	Average	Retain	Some trunk damage. Response wood evident around wounds.
E06	<i>Picea glauca</i>	White Spruce	0.16	Dead	Remove	Dead.
E07	<i>Ulmus pumila</i>	Siberian Elm	0.44	Average	Remove	East leaning stem historically removed at 0.9m. Remaining stem leans southwest over existing building. Dead branches in upper canopy.
E08	<i>Acer platanoides</i>	Crismon King Norway Maple	0.47	Good	Retain	North lean over adjacent property. Conflicts with overhead wires
E09	<i>Acer platanoides</i>	Crismon King Norway Maple	0.37	Average	Retain	Heavily conflicted with overhead wires
E10	<i>Acer negundo</i>	Manitoba Maple	0.22	Average	Retain	Imbalanced crown heavily leaning to south over building. Little buttress support. Stem/upper canopy resting on E11
E11	<i>Acer negundo</i>	Manitoba Maple	0.46	Average	Retain	Heavy lean to southeast over existing building. Intertwined with and provides structural support to E10
E12	<i>Acer negundo</i>	Manitoba Maple	0.43	Poor	Retain	Leans to the northwest over the building. Internal rot at base. Large broken branch hanging from tree.



KEY PLAN, NTS

GENERAL NOTES

1. ALL GENERAL SITE INFORMATION AND CONDITIONS COMPILED FROM ARCHITECT'S AND ENGINEER'S PLANS AND SURVEYS.
2. DO NOT SCALE THIS DRAWING.
3. REPORT ANY DISCREPANCIES PRIOR TO COMMENCING WORK. NO RESPONSIBILITY IS BORN BY THE LANDSCAPE ARCHITECT FOR UNKNOWN SUBSURFACE CONDITIONS.
4. REINSTATE ALL AREAS AND ITEMS DAMAGED AS A RESULT OF CONSTRUCTION ACTIVITIES TO THE SATISFACTION OF THE LANDSCAPE ARCHITECT.
5. DRAWING MAY NOT BE USED FOR CONSTRUCTION UNTIL SIGNED BY LANDSCAPE ARCHITECT AS ISSUED FOR CONSTRUCTION.
6. THE ACCURACY OF THE POSITION OF UTILITIES IS NOT GUARANTEED.
7. INDIVIDUAL UTILITY CO. MUST BE CONTACTED FOR CONFIRMATION OF UTILITY EXISTENCE AND LOCATION PRIOR TO DIGGING.
8. THIS DRAWING IS AN INSTRUMENT OF SERVICE AND REQUIRES THE PERMISSION OF THE LANDSCAPE ARCHITECT FOR USE. COPYRIGHT IS RESERVED BY THE LANDSCAPE ARCHITECT, DAVID M. LASHLEY.

Committee of Adjustment
Received | Reçu le
2024-04-09
City of Ottawa | Ville d'Ottawa
Comité de dérogation

- I 2024-03-15 Planting Revision per City for CoA
- F 2023-10-20 Issued for Committee of Adjustment
- C 2023-10-19 Issued for Committee of Adjustment
- B 2023-10-03 Issued for Committee of Adjustment
- A 2023-09-26 Issued for Review

NO. DATE DESCRIPTION

SEAL: NORTH:

LASHLEY + ASSOCIATES
LANDSCAPE ARCHITECTURE AND SITE ENGINEERING
OTTAWA - MONTREAL

202 900 GLADSTONE AVENUE
OTTAWA, ON K1Y 3E6
T 613 233 8579 x102
F 613 233 4051
W LashleyLA.com
E Mail@LashleyLA.com

PROJECT:
MACLAREN TREE INVENTORY
275 Maclaren Street, Ottawa,
ON K2P 0L9

DRAWING TITLE:
PRE-DEVELOPMENT PLAN

DATE: 2023-09-20 **DRAWING NO.:**
DRAWN SCALE: 1:200 **TP-1**
DRAWN BY: NG/RP
LA PROJECT NO.: 23870-1 **REV NO.:** 0



KEY PLAN, NTS

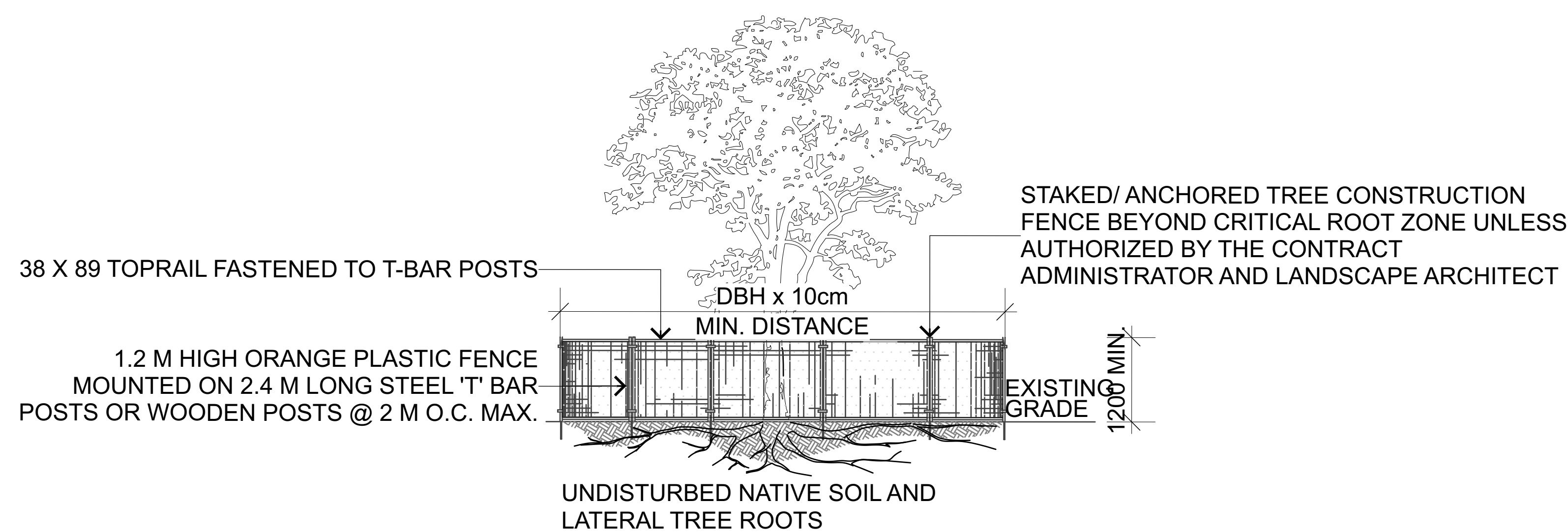
GENERAL NOTES

1. ALL GENERAL SITE INFORMATION AND CONDITIONS COMPILED FROM ARCHITECT'S AND ENGINEER'S PLANS AND SURVEYS.
2. DO NOT SCALE THIS DRAWING.
3. REPORT ANY DISCREPANCIES PRIOR TO COMMENCING WORK. NO RESPONSIBILITY IS BORN BY THE LANDSCAPE ARCHITECT FOR UNKNOWN SUBSURFACE CONDITIONS.
4. REINSTATE ALL AREAS AND ITEMS DAMAGED AS A RESULT OF CONSTRUCTION ACTIVITIES TO THE SATISFACTION OF THE LANDSCAPE ARCHITECT.
5. DRAWING MAY NOT BE USED FOR CONSTRUCTION UNTIL SIGNED BY LANDSCAPE ARCHITECT AS ISSUED FOR CONSTRUCTION.
6. THE ACCURACY OF THE POSITION OF UTILITIES IS NOT GUARANTEED.
7. INDIVIDUAL UTILITY CO. MUST BE CONTACTED FOR CONFIRMATION OF UTILITY EXISTENCE AND LOCATION PRIOR TO DIGGING.
8. THIS DRAWING IS AN INSTRUMENT OF SERVICE AND REQUIRES THE PERMISSION OF THE LANDSCAPE ARCHITECT FOR USE. COPYRIGHT IS RESERVED BY THE LANDSCAPE ARCHITECT, DAVID M. LASHLEY.



LEGEND

- PROPERTY LINE
- TREE PROTECTION FENCE
- ▭ PROPOSED BUILDING
- EXISTING TREE TO REMAIN
- EXISTING TREE TO REMOVE

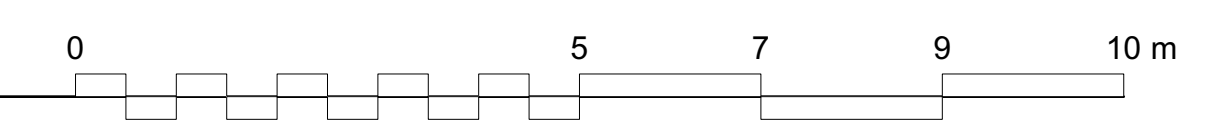


NOTES:

- THE FOLLOWING PROTECTION MEASURES MUST BE IMPLEMENTED FOR RETAINED TREES, BOTH WITHIN THE WORK AREA AND ON ADJACENT PARCELS.
1. UNDER THE GUIDANCE OF AN ARBORIST, ERECT A MODULAR FENCE AT THE CRITICAL ROOT ZONE (CRZ) OF TREES WHERE THE CRZ IS ESTABLISHED AS BEING 10 CENTIMETERS FROM THE TRUNK FOR EVERY CENTIMETER OF TRUNK DIAMETER AT BREAST HEIGHT.
 2. TREE PROTECTION SHALL BE ERECTED TO PROVIDE A CONTINUOUS BARRICADE BETWEEN DESIGNATED TREES AND THE WORK AREA PRIOR TO CONSTRUCTION.
 3. TUNNEL OR BORE WHEN DIGGING WITHIN THE CRZ OF A TREE.
 4. ENSURE ALL EQUIPMENT AND CONSTRUCTION RELATED MATERIAL ARE NOT PLACED OR TEMPORARILY STORED WITHIN THE CRZ.
 5. ENSURE EXHAUST FUMES FROM ALL EQUIPMENT ARE NOT DIRECTED TOWARDS ANY TREE'S CANOPY.
 6. FLOODING OR DEPOSITION OF SEDIMENT SHALL BE PREVENTED WHERE TREES ARE LOCATED.
 7. ALL DISTURBED ROOT SYSTEMS SHALL BE EXPOSED AND BACKFILLED IN ONE CONTINUOUS OPERATION TO MINIMIZE DESICCATION.
 8. EXPOSED ROOTS SHALL BE KEPT CONTINUOUSLY MOIST DURING EXCAVATION.
 9. REMOVE BROKEN AND DAMAGED ROOTS WITH SHARP PRUNING SHEARS.
 10. THE TREE PROTECTION MODULAR FENCE IS TEMPORARY, SHALL BE MAINTAINED AT ALL TIMES DURING CONSTRUCTION OPERATIONS, AND SHALL BE REMOVED UPON COMPLETION OF WORK WHEN AGREED TO BY THE CONTRACT ADMINISTRATOR AND LANDSCAPE ARCHITECT.

MACLAREN ST.

1 POST DEVELOPMENT PLAN
TP-2 Scale: 1:75



2 TREE PROTECTION FENCE
TP-2 Scale: 1:50

Committee of Adjustment
 Received | Reçu le
2024-04-09
 City of Ottawa | Ville d'Ottawa
Comité de dérogation

I	2024-03-15	Planting Revision per City for CoA
G	2023-10-20	Issued for Committee of Adjustment
D	2023-10-19	Issued for Committee of Adjustment
B	2023-10-03	Issued for Committee of Adjustment
A	2023-09-26	Issued for Review

NO. DATE DESCRIPTION

SEAL: NORTH:

LASHLEY + ASSOCIATES
LANDSCAPE ARCHITECTURE AND SITE ENGINEERING
OTTAWA - MONTREAL

202 590 GLADSTONE AVENUE
OTTAWA, ON K1Y 3E6
T 613 233 8579 x102
F 613 233 4051
W LashleyLA.com
E Mail@LashleyLA.com

PROJECT:
MACLAREN TREE INVENTORY
275 MacLaren Street, Ottawa,
ON K2P 0L9

DRAWING TITLE:
POST-DEVELOPMENT PLAN

DATE:	2023-09-20	DRAWING NO.:	
DRAWN SCALE:	1:200	TP-2	
DRAWN BY:	NG/RP		
LA PROJECT NO.:	23870-1	REV NO.:	0



KEY PLAN, NTS

GENERAL NOTES

1. ALL GENERAL SITE INFORMATION AND CONDITIONS COMPILED FROM ARCHITECT'S AND ENGINEER'S PLANS AND SURVEYS.
2. DO NOT SCALE THIS DRAWING.
3. REPORT ANY DISCREPANCIES PRIOR TO COMMENCING WORK. NO RESPONSIBILITY IS BORN BY THE LANDSCAPE ARCHITECT FOR UNKNOWN SUBSURFACE CONDITIONS.
4. REINSTATE ALL AREAS AND ITEMS DAMAGED AS A RESULT OF CONSTRUCTION ACTIVITIES TO THE SATISFACTION OF THE LANDSCAPE ARCHITECT.
5. DRAWING MAY NOT BE USED FOR CONSTRUCTION UNTIL SIGNED BY LANDSCAPE ARCHITECT AS ISSUED FOR CONSTRUCTION.
6. THE ACCURACY OF THE POSITION OF UTILITIES IS NOT GUARANTEED.
7. INDIVIDUAL UTILITY CO. MUST BE CONTACTED FOR CONFIRMATION OF UTILITY EXISTENCE AND LOCATION PRIOR TO DIGGING.
8. THIS DRAWING IS AN INSTRUMENT OF SERVICE AND REQUIRES THE PERMISSION OF THE LANDSCAPE ARCHITECT FOR USE. COPYRIGHT IS RESERVED BY THE LANDSCAPE ARCHITECT, DAVID M. LASHLEY.



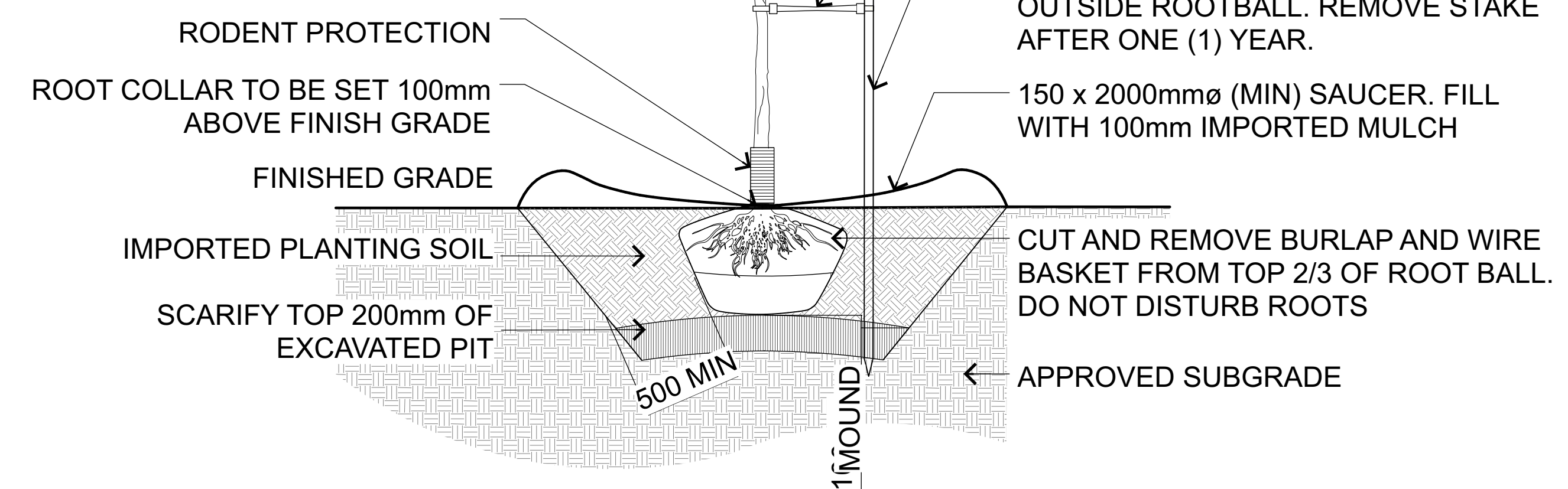
LEGEND

- PROPERTY LINE
- - - - TREE PROTECTION FENCE
- ▭ PROPOSED BUILDING
- EXISTING TREE TO REMAIN
- PROPOSED TREE

Plant List

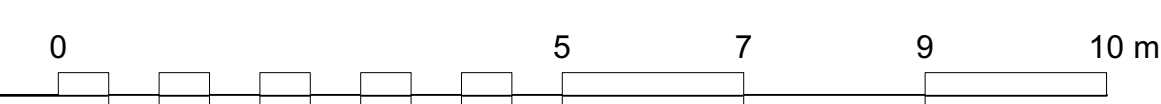
ID	Qty	Botanical Name	Common Name	Size	Comments
AB	1	Abies balsamea	Balsam Fir	2.0 m ht.	TREEFORM
AC	2	Amelanchier canadensis	Shadblow Serviceberry	50mm WB.	TREEFORM

NOTE:
DO NOT DAMAGE OR CUT LEADER.
REMOVE BROKEN BRANCHES AS DIRECTED BY LANDSCAPE ARCHITECT.
PRUNE AS REQUIRED MAINTAINING NATURAL SHAPE.



MACLAREN ST.

1 PLANTING PLAN
L-01 Scale: 1:75



2 DECIDUOUS TREE PLANTING
L-01 Scale 1:25

Committee of Adjustment
Received | Reçu le
2024-04-09
City of Ottawa | Ville d'Ottawa
Comité de dérogation

NO.	DATE	DESCRIPTION
I	2024-03-15	Planting Revision per City for CoA
H	2023-10-20	Issued for Committee of Adjustment
E	2023-10-19	Issued for Committee of Adjustment
B	2023-10-03	Issued for Committee of Adjustment
A	2023-09-26	Issued for Review

SEAL: NORTH:

LASHLEY + ASSOCIATES
LANDSCAPE ARCHITECTURE AND SITE ENGINEERING
OTTAWA - MONTREAL

202, 990 GLADSTONE AVENUE
OTTAWA, ON K1Y 3E6
T 613 233 8579 x102
F 613 233 4051
W LashleyLA.com
E Mail@LashleyLA.com

PROJECT:
MACLAREN TREE INVENTORY
275 MacLaren Street, Ottawa,
ON K2P 0L9

DRAWING TITLE:
PLANTING PLAN

DATE: 2023-09-20 **DRAWING NO.:**
DRAWN SCALE: 1:200 **L-01**
DRAWN BY: NGR/JP
LA PROJECT NO.: 23870-1 **REV NO.:** 0

275 MACLAREN STREET

Committee of Adjustment
Received | Reçu le
Revised | Modifié le : 2024-04-09
City of Ottawa | Ville d'Ottawa
Comité de dérogation



LASHLEY
+ASSOCIATES
LANDSCAPE ARCHITECTURE
AND SITE ENGINEERING

200-260 GLADSTONE AVENUE
OTTAWA, ON K1Y 3E5
T 613 233 8579
F 613 233 4051
W LashleyLA.com
E Mail@LashleyLA.com

275 MACLAREN STREET
OTTAWA, ONTARIO
ISSUED FOR
COMMITTEE OF ADJUSTMENT
20 OCTOBER 2023

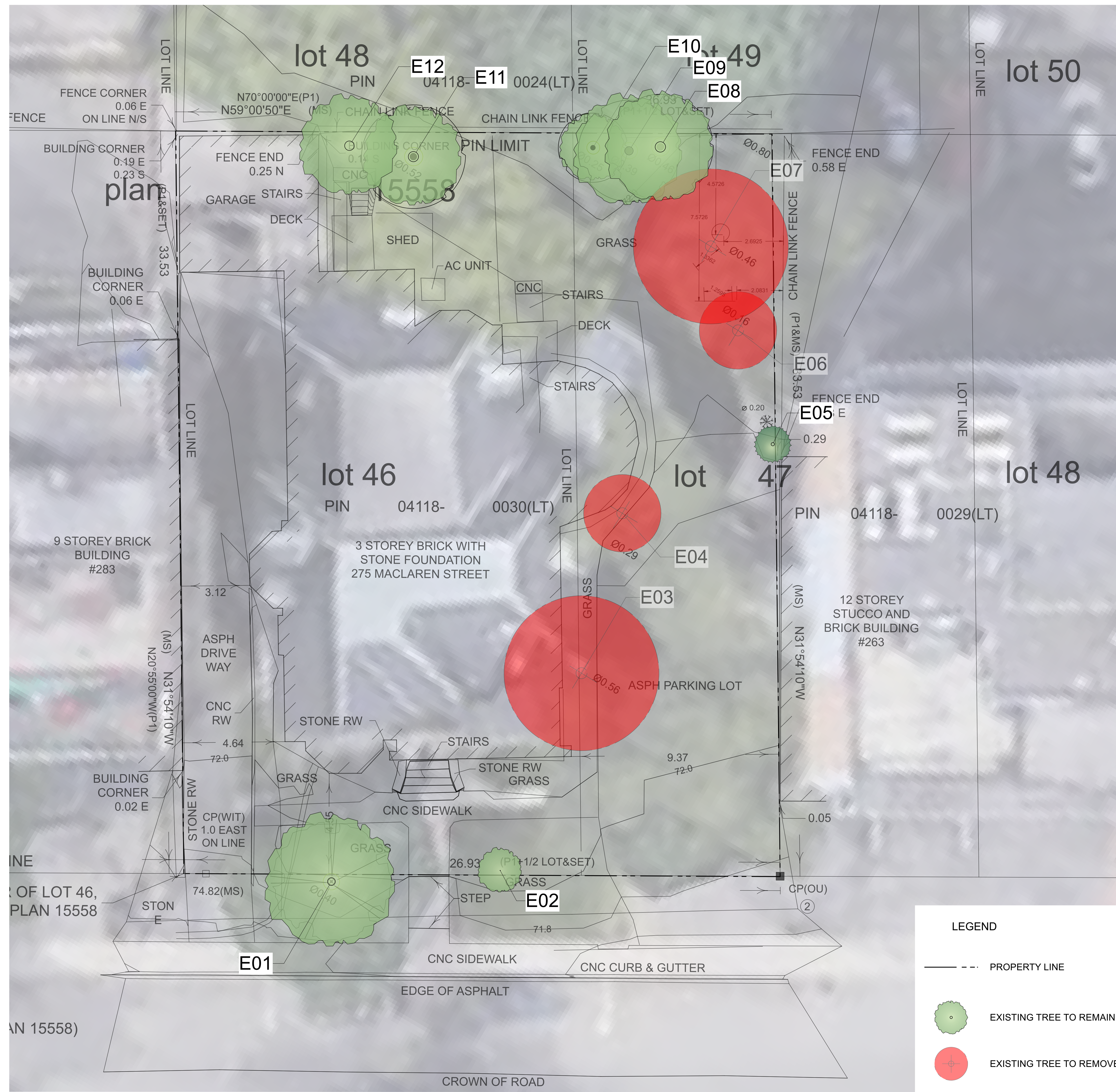
DRAWING INDEX

PRE-DEVELOPMENT PLAN TP -1
POST-DEVELOPMENT PLAN TP-2
PLANTING PLAN L-01



KEY PLAN





1 TP-1 TREE CONSERVATION PLAN
Scale: 1:75

Existing Tree List

ID	Botanical Name	Common Name	DBH	Condition	Action	Notes
E01	<i>Acer platanoides</i>	Crismon King Norway Maple	0.35	Poor	Retain	Large vertical split in trunk. Significant splitting in branches above crotch. Some response wood around previous pruning wounds. Dead branches in canopy.
E02	<i>Quercus macrocarpa</i>	Burr Oak	0.02	Good	Retain	Good. Young sapling.
E03	<i>Ulmus pumila</i>	Siberian Elm	0.52	Average	Remove	Imbalanced crown, heavy lean to east over driveway. Dead branches in upper canopy. Compression roots raising driveway and tension roots likely attached to building foundation.
E04	<i>Ulmus pumila</i>	Siberian Elm	0.3	Good	Remove	Dead branches in upper canopy. Well-developed buttress roots.
E05	<i>Thuja occidentalis</i>	Eastern White Cedar	0.15	Average	Retain	Some trunk damage. Response wood evident around wounds.
E06	<i>Picea glauca</i>	White Spruce	0.16	Dead	Remove	Dead.
E07	<i>Ulmus pumila</i>	Siberian Elm	0.44	Average	Remove	East leaning stem historically removed at 0.9m. Remaining stem leans southwest over existing building. Dead branches in upper canopy.
E08	<i>Acer platanoides</i>	Crismon King Norway Maple	0.47	Good	Retain	North lean over adjacent property. Conflicts with overhead wires
E09	<i>Acer platanoides</i>	Crismon King Norway Maple	0.37	Average	Retain	Heavily conflicted with overhead wires
E10	<i>Acer negundo</i>	Manitoba Maple	0.22	Average	Retain	Imbalanced crown heavily leaning to south over building. Little buttress support. Stem/upper canopy resting on E11
E11	<i>Acer negundo</i>	Manitoba Maple	0.46	Average	Retain	Heavy lean to southeast over existing building. Intertwined with and provides structural support to E10
E12	<i>Acer negundo</i>	Manitoba Maple	0.43	Poor	Retain	Leans to the northwest over the building. Internal rot at base. Large broken branch hanging from tree.



KEY PLAN, NTS

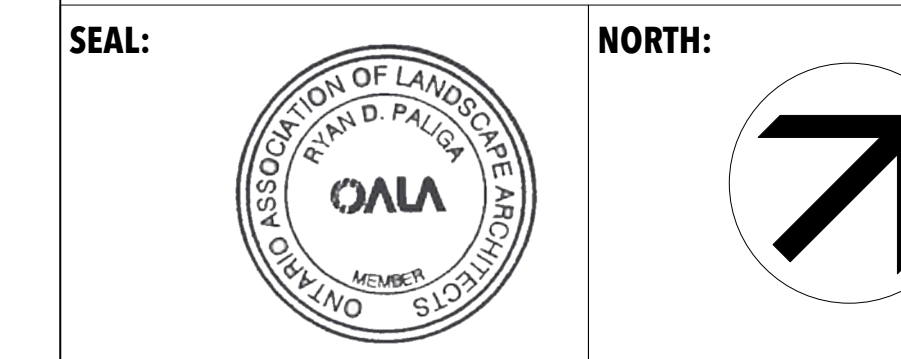
GENERAL NOTES

1. ALL GENERAL SITE INFORMATION AND CONDITIONS COMPILED FROM ARCHITECT'S AND ENGINEER'S PLANS AND SURVEYS.
2. DO NOT SCALE THIS DRAWING.
3. REPORT ANY DISCREPANCIES PRIOR TO COMMENCING WORK. NO RESPONSIBILITY IS BORN BY THE LANDSCAPE ARCHITECT FOR UNKNOWN SUBSURFACE CONDITIONS.
4. REINSTATE ALL AREAS AND ITEMS DAMAGED AS A RESULT OF CONSTRUCTION ACTIVITIES TO THE SATISFACTION OF THE LANDSCAPE ARCHITECT.
5. DRAWING MAY NOT BE USED FOR CONSTRUCTION UNTIL SIGNED BY LANDSCAPE ARCHITECT AS ISSUED FOR CONSTRUCTION.
6. THE ACCURACY OF THE POSITION OF UTILITIES IS NOT GUARANTEED.
7. INDIVIDUAL UTILITY CO. MUST BE CONTACTED FOR CONFIRMATION OF UTILITY EXISTENCE AND LOCATION PRIOR TO DIGGING.
8. THIS DRAWING IS AN INSTRUMENT OF SERVICE AND REQUIRES THE PERMISSION OF THE LANDSCAPE ARCHITECT FOR USE. COPYRIGHT IS RESERVED BY THE LANDSCAPE ARCHITECT, DAVID M. LASHLEY.



- I 2024-03-15 Planting Revision per City for CoA
- F 2023-10-20 Issued for Committee of Adjustment
- C 2023-10-19 Issued for Committee of Adjustment
- B 2023-10-03 Issued for Committee of Adjustment
- A 2023-09-26 Issued for Review

NO. DATE DESCRIPTION



PROJECT:
MACLAREN TREE INVENTORY
275 MacLaren Street, Ottawa,
ON K2P 0L9

DRAWING TITLE:
PRE-DEVELOPMENT PLAN

DATE: 2023-09-20 **DRAWING NO.:**
DRAWN SCALE: 1:200 **TP-1**
DRAWN BY: NG/RP
LA PROJECT NO.: 23870-1 **REV NO.:** 0



KEY PLAN, NTS

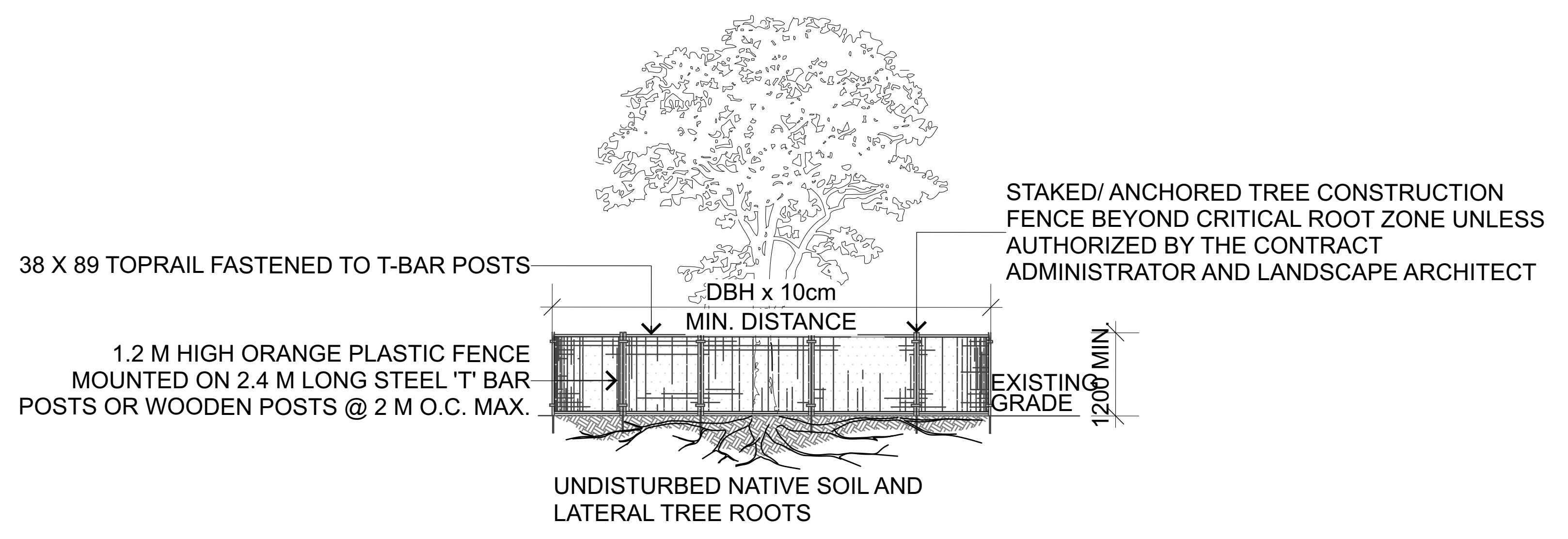
GENERAL NOTES

1. ALL GENERAL SITE INFORMATION AND CONDITIONS COMPILED FROM ARCHITECT'S AND ENGINEER'S PLANS AND SURVEYS.
2. DO NOT SCALE THIS DRAWING.
3. REPORT ANY DISCREPANCIES PRIOR TO COMMENCING WORK. NO RESPONSIBILITY IS BORN BY THE LANDSCAPE ARCHITECT FOR UNKNOWN SUBSURFACE CONDITIONS.
4. REINSTATE ALL AREAS AND ITEMS DAMAGED AS A RESULT OF CONSTRUCTION ACTIVITIES TO THE SATISFACTION OF THE LANDSCAPE ARCHITECT.
5. DRAWING MAY NOT BE USED FOR CONSTRUCTION UNTIL SIGNED BY LANDSCAPE ARCHITECT AS ISSUED FOR CONSTRUCTION.
6. THE ACCURACY OF THE POSITION OF UTILITIES IS NOT GUARANTEED.
7. INDIVIDUAL UTILITY CO. MUST BE CONTACTED FOR CONFIRMATION OF UTILITY EXISTENCE AND LOCATION PRIOR TO DIGGING.
8. THIS DRAWING IS AN INSTRUMENT OF SERVICE AND REQUIRES THE PERMISSION OF THE LANDSCAPE ARCHITECT FOR USE. COPYRIGHT IS RESERVED BY THE LANDSCAPE ARCHITECT, DAVID M. LASHLEY.



LEGEND

- PROPERTY LINE
- - - - - TREE PROTECTION FENCE
- ▭ PROPOSED BUILDING
- EXISTING TREE TO REMAIN
- EXISTING TREE TO REMOVE

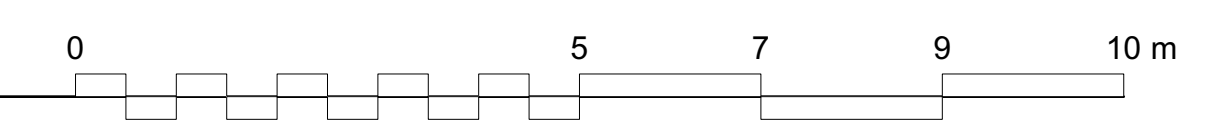


NOTES:

- THE FOLLOWING PROTECTION MEASURES MUST BE IMPLEMENTED FOR RETAINED TREES, BOTH WITHIN THE WORK AREA AND ON ADJACENT PARCELS.
1. UNDER THE GUIDANCE OF AN ARBORIST, ERECT A MODULAR FENCE AT THE CRITICAL ROOT ZONE (CRZ) OF TREES WHERE THE CRZ IS ESTABLISHED AS BEING 10 CENTIMETERS FROM THE TRUNK FOR EVERY CENTIMETER OF TRUNK DIAMETER AT BREAST HEIGHT.
 2. TREE PROTECTION SHALL BE ERECTED TO PROVIDE A CONTINUOUS BARRICADE BETWEEN DESIGNATED TREES AND THE WORK AREA PRIOR TO CONSTRUCTION.
 3. TUNNEL OR BORE WHEN DIGGING WITHIN THE CRZ OF A TREE.
 4. ENSURE ALL EQUIPMENT AND CONSTRUCTION RELATED MATERIAL ARE NOT PLACED OR TEMPORARILY STORED WITHIN THE CRZ.
 5. ENSURE EXHAUST FUMES FROM ALL EQUIPMENT ARE NOT DIRECTED TOWARDS ANY TREE'S CANOPY.
 6. FLOODING OR DEPOSITION OF SEDIMENT SHALL BE PREVENTED WHERE TREES ARE LOCATED.
 7. ALL DISTURBED ROOT SYSTEMS SHALL BE EXPOSED AND BACKFILLED IN ONE CONTINUOUS OPERATION TO MINIMIZE DESICCATION.
 8. EXPOSED ROOTS SHALL BE KEPT CONTINUOUSLY MOIST DURING EXCAVATION.
 9. REMOVE BROKEN AND DAMAGED ROOTS WITH SHARP PRUNING SHEARS.
 10. THE TREE PROTECTION MODULAR FENCE IS TEMPORARY, SHALL BE MAINTAINED AT ALL TIMES DURING CONSTRUCTION OPERATIONS, AND SHALL BE REMOVED UPON COMPLETION OF WORK WHEN AGREED TO BY THE CONTRACT ADMINISTRATOR AND LANDSCAPE ARCHITECT.

MACLAREN ST.

1 POST DEVELOPMENT PLAN
TP-2 Scale: 1:75



2 TREE PROTECTION FENCE
TP-2 Scale: 1:50

I	2024-03-15	Planting Revision per City for CoA
G	2023-10-20	Issued for Committee of Adjustment
D	2023-10-19	Issued for Committee of Adjustment
B	2023-10-03	Issued for Committee of Adjustment
A	2023-09-26	Issued for Review

NO.	DATE	DESCRIPTION
-----	------	-------------

SEAL: NORTH:

LASHLEY + ASSOCIATES
LANDSCAPE ARCHITECTURE AND SITE ENGINEERING
OTTAWA - MONTREAL

202 990 GLADSTONE AVENUE
OTTAWA, ON K1Y 3E6
T 613 233 8579 x102
F 613 233 4051
W LashleyLA.com
E Mail@LashleyLA.com

PROJECT:
MACLAREN TREE INVENTORY
275 MacLaren Street, Ottawa,
ON K2P 0L9

DRAWING TITLE:
POST-DEVELOPMENT PLAN

DATE:	2023-09-20	DRAWING NO.:	
DRAWN SCALE:	1:200	TP-2	
DRAWN BY:	NG/RP		
LA PROJECT NO.:	23870-1	REV NO.:	0



KEY PLAN, NTS

GENERAL NOTES

1. ALL GENERAL SITE INFORMATION AND CONDITIONS COMPILED FROM ARCHITECT'S AND ENGINEER'S PLANS AND SURVEYS.
2. DO NOT SCALE THIS DRAWING.
3. REPORT ANY DISCREPANCIES PRIOR TO COMMENCING WORK. NO RESPONSIBILITY IS BORN BY THE LANDSCAPE ARCHITECT FOR UNKNOWN SUBSURFACE CONDITIONS.
4. REINSTATE ALL AREAS AND ITEMS DAMAGED AS A RESULT OF CONSTRUCTION ACTIVITIES TO THE SATISFACTION OF THE LANDSCAPE ARCHITECT.
5. DRAWING MAY NOT BE USED FOR CONSTRUCTION UNTIL SIGNED BY LANDSCAPE ARCHITECT AS ISSUED FOR CONSTRUCTION.
6. THE ACCURACY OF THE POSITION OF UTILITIES IS NOT GUARANTEED.
7. INDIVIDUAL UTILITY CO. MUST BE CONTACTED FOR CONFIRMATION OF UTILITY EXISTENCE AND LOCATION PRIOR TO DIGGING.
8. THIS DRAWING IS AN INSTRUMENT OF SERVICE AND REQUIRES THE PERMISSION OF THE LANDSCAPE ARCHITECT FOR USE. COPYRIGHT IS RESERVED BY THE LANDSCAPE ARCHITECT, DAVID M. LASHLEY.



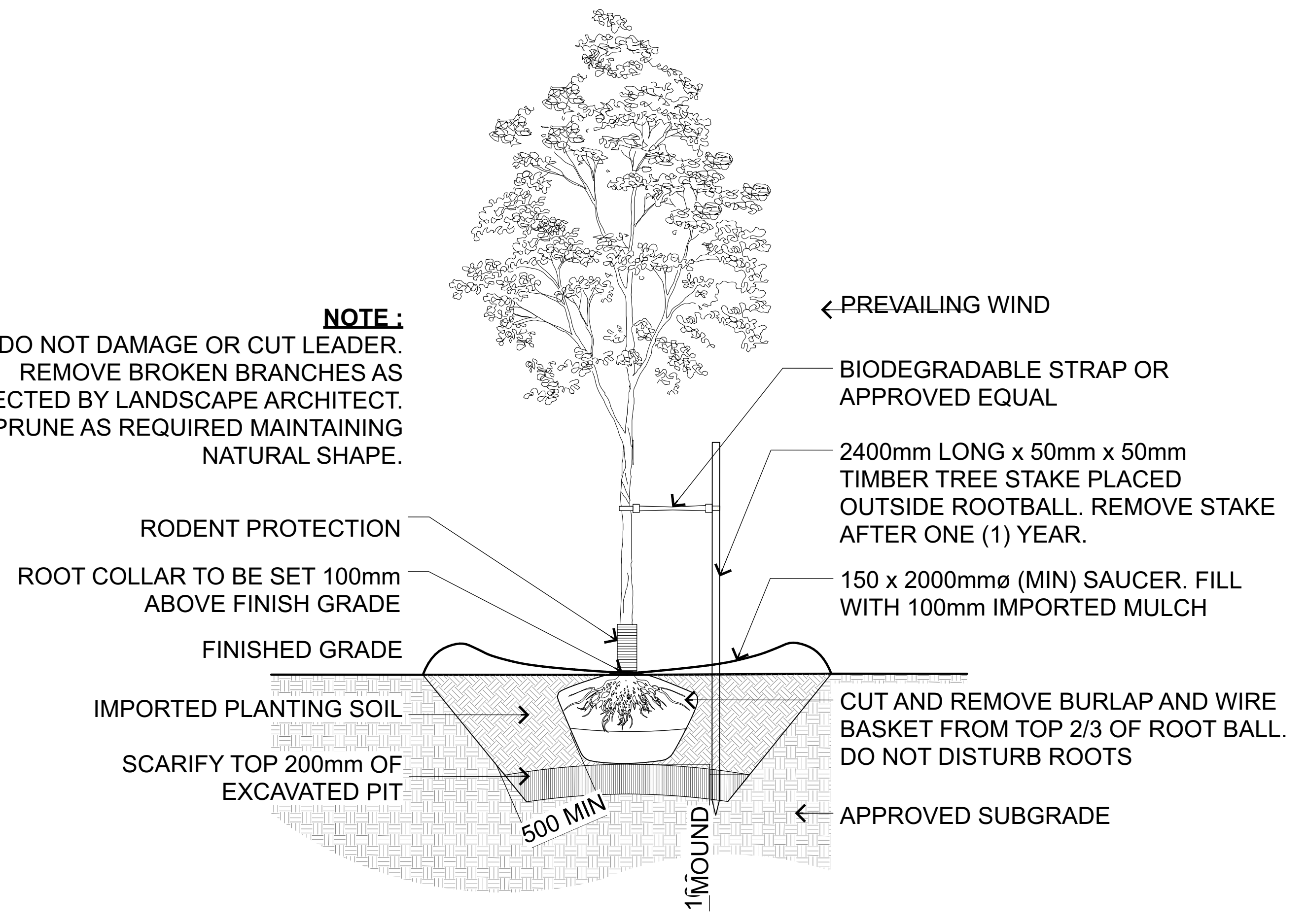
LEGEND

- PROPERTY LINE
- o-o-o- TREE PROTECTION FENCE
- ▭ PROPOSED BUILDING
- EXISTING TREE TO REMAIN
- PROPOSED TREE

Plant List

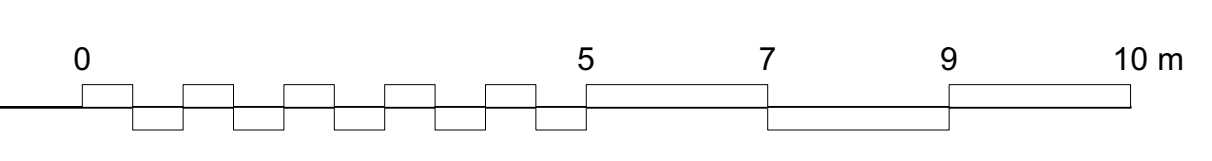
ID	Qty	Botanical Name	Common Name	Size	Comments
AB	1	Abies balsamea	Balsam Fir	2.0 m ht.	TREEFORM
AC	2	Amelanchier canadensis	Shadblow Serviceberry	50mm WB.	TREEFORM

NOTE:
DO NOT DAMAGE OR CUT LEADER.
REMOVE BROKEN BRANCHES AS DIRECTED BY LANDSCAPE ARCHITECT.
PRUNE AS REQUIRED MAINTAINING NATURAL SHAPE.



MACLAREN ST.

1 PLANTING PLAN
L-01 Scale: 1:75



2 DECIDUOUS TREE PLANTING
L-01 Scale 1:25

NO.	DATE	DESCRIPTION
I	2024-03-15	Planting Revision per City for CoA
H	2023-10-20	Issued for Committee of Adjustment
E	2023-10-19	Issued for Committee of Adjustment
B	2023-10-03	Issued for Committee of Adjustment
A	2023-09-26	Issued for Review

SEAL: NORTH:

LASHLEY + ASSOCIATES
LANDSCAPE ARCHITECTURE AND SITE ENGINEERING
OTTAWA - MONTREAL

202, 990 GLADSTONE AVENUE
OTTAWA, ON K1Y 3E6
T 613 233 8579 x102
F 613 233 4051
W LashleyLA.com
E Mail@LashleyLA.com

PROJECT:
MACLAREN TREE INVENTORY
275 MacLaren Street, Ottawa,
ON K2P 0L9

DRAWING TITLE:
PLANTING PLAN

DATE: 2023-09-20 **DRAWING NO.:**
DRAWN SCALE: 1:200 **L-01**
DRAWN BY: NGR/JP
LA PROJECT NO.: 23870-1 **REV NO.:** 0