

Les Services d'Arbres



Tree Inspection Report

Committee of Adjustment
Received | Reçu le
2023-05-29

City of Ottawa | Ville d'Ottawa
Comité de dérogation

Jean Sarich

ISA Certified Arborist QU-0172A

819-208-3331

Info@towertree.ca

797 Lonsdale Road

Here is an inventory of trees at this address.

#	Species	DBH	Critical Root Zone (CRZ)	Ownership	Condition	Recommendation
1	American Beech	57cm & 61cm	610 cm	City of Ottawa	Very Good	Retain, follow tree protection specs in TIR
2	White Pine	58.5cm	585 cm	City of Ottawa	Very Good	Retain, follow tree protection specs in TIR
3	Spruce	25cm	250 cm	City of Ottawa	Very Good	Retain, follow tree protection specs in TIR
4	Spruce	28cm	280 cm	City of Ottawa	Very Good	Retain, follow tree protection specs in TIR

Anyone working near protected trees must, unless otherwise authorized by the City:

- Erect a 1.2 m high fence around the outer edge of the critical root zone (CRZ) of trees prior to beginning other site work, and maintain the fence until the work is complete (see the [City's Tree Protection Specification \[PDF 377KB\]](#) **(link is external)** for more information)
- Not place any material or equipment within the CRZ of the tree
- Not raise or lower the existing grade within the CRZ of a tree
- Not extend any hard surface or significantly change landscaping within the CRZ of a tree
- Not attach any signs, notices or posters to any tree, except as required by this by-law for trees to be removed
- Not damage the root system, trunk or branches of any tree
- Ensure that exhaust fumes from equipment are not directed towards any tree's canopy

The critical root zone (CRZ) is established as being 10 centimetres from the trunk of a tree for every centimetre of trunk diameter. The trunk diameter is measured at a height of 1.3 metres for trees of 15 centimetres diameter and greater and at a height of 0.3 metres for trees of less than 15 centimetres diameter. Please refer to attached site plan for CRZ measurements.

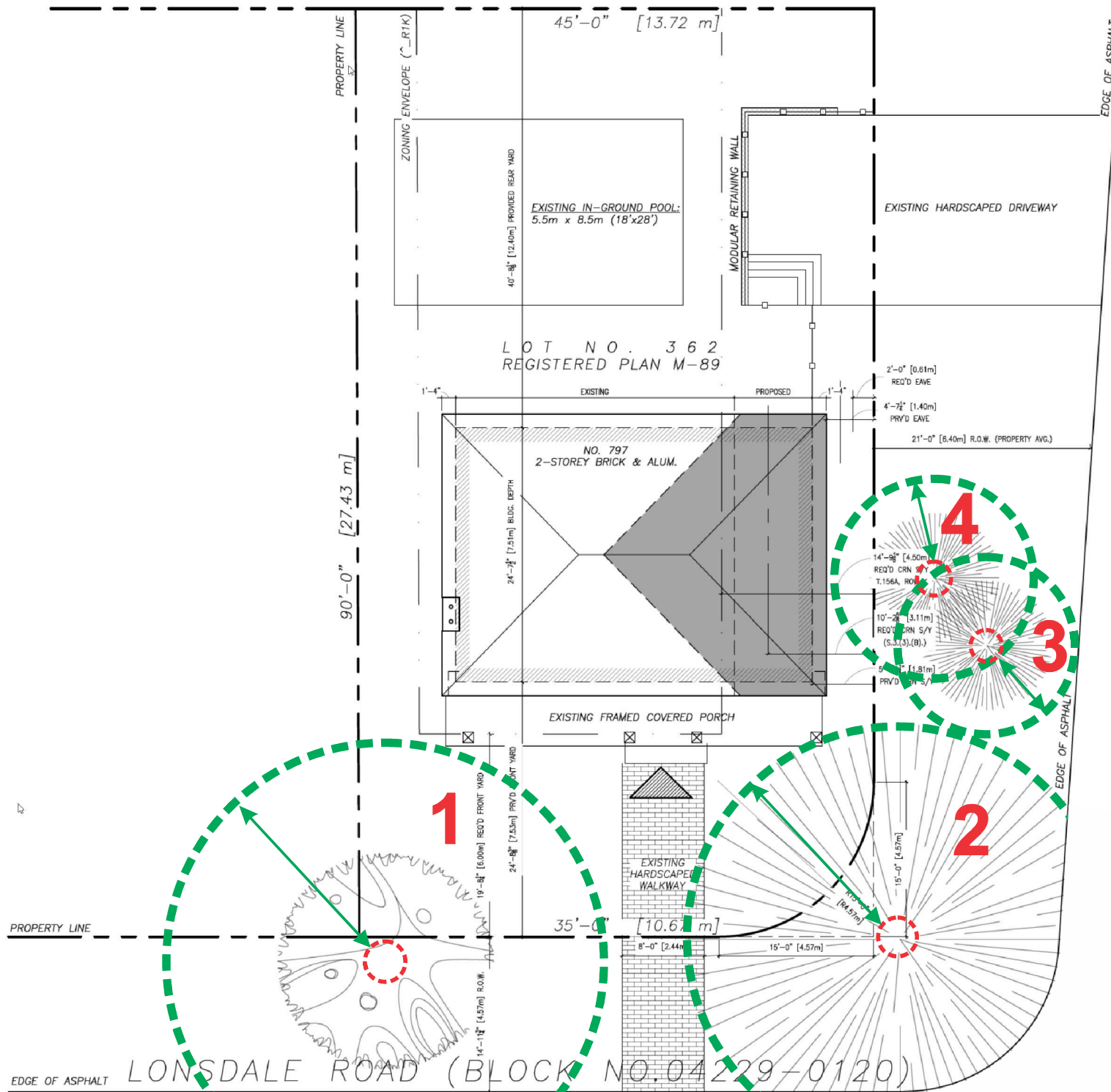
It is an offence under the Tree Protection By-law to fail to adequately protect a tree that has not been approved for removal.

797 Lonsdale Road

Tree Inspection Report
 Jean Sarich
 ISA Certified Arborist QU-0172A

819-208-3331
 Info@towertree.ca

Critical Root Zone	
TREE	CRZ m [ft]
1	6.1 m [20'-0"]
2	5.9 m [19'-2"]
3	2.5 m [8'-2"]
4	2.8 m [9'-2"]



THORNWOOD ROAD

