

Committee of Adjustment  
Received | Reçu le  
**2024-05-29**  
City of Ottawa | Ville d'Ottawa  
Comité de dérogation

SCHEDULE				
AREA (Sq.m.)	PART	LOT	CONCESSION	PLAN
600.6	1		1 (OLD SURVEY)	PART OF 1450-0509
600.6	2		1 (OLD SURVEY)	PART OF 1450-0509

Part 1: Subject to easement, Incl. OC2032997.

**DRAFT PLAN OF SURVEY OF**  
**LOTS 34 AND 35**  
**CONCESSION 1 (OLD SURVEY)**  
**Geographic Township of Cumberland**  
**CITY OF OTTAWA**  
Surveyed by Annis, O'Sullivan, Vollebakk Ltd.

Scale 1 : 500  
The intended plot size of the plan is 1372 mm in width by 914 mm in height when plotted at a scale of 1:500.

**Metric**  
DISTANCES AND COORDINATES SHOWN ON THIS PLAN ARE IN METRES AND CAN BE CONVERTED TO FEET BY DIVIDING BY 0.3048.

**Surveyor's Certificate**  
I, the undersigned, being a duly qualified and licensed Surveyor under the Act, the Surveyors Act and the Land Titles Act and the regulations made under them,  
2. The survey was completed on the \_\_\_\_\_ day of \_\_\_\_\_, 2024.

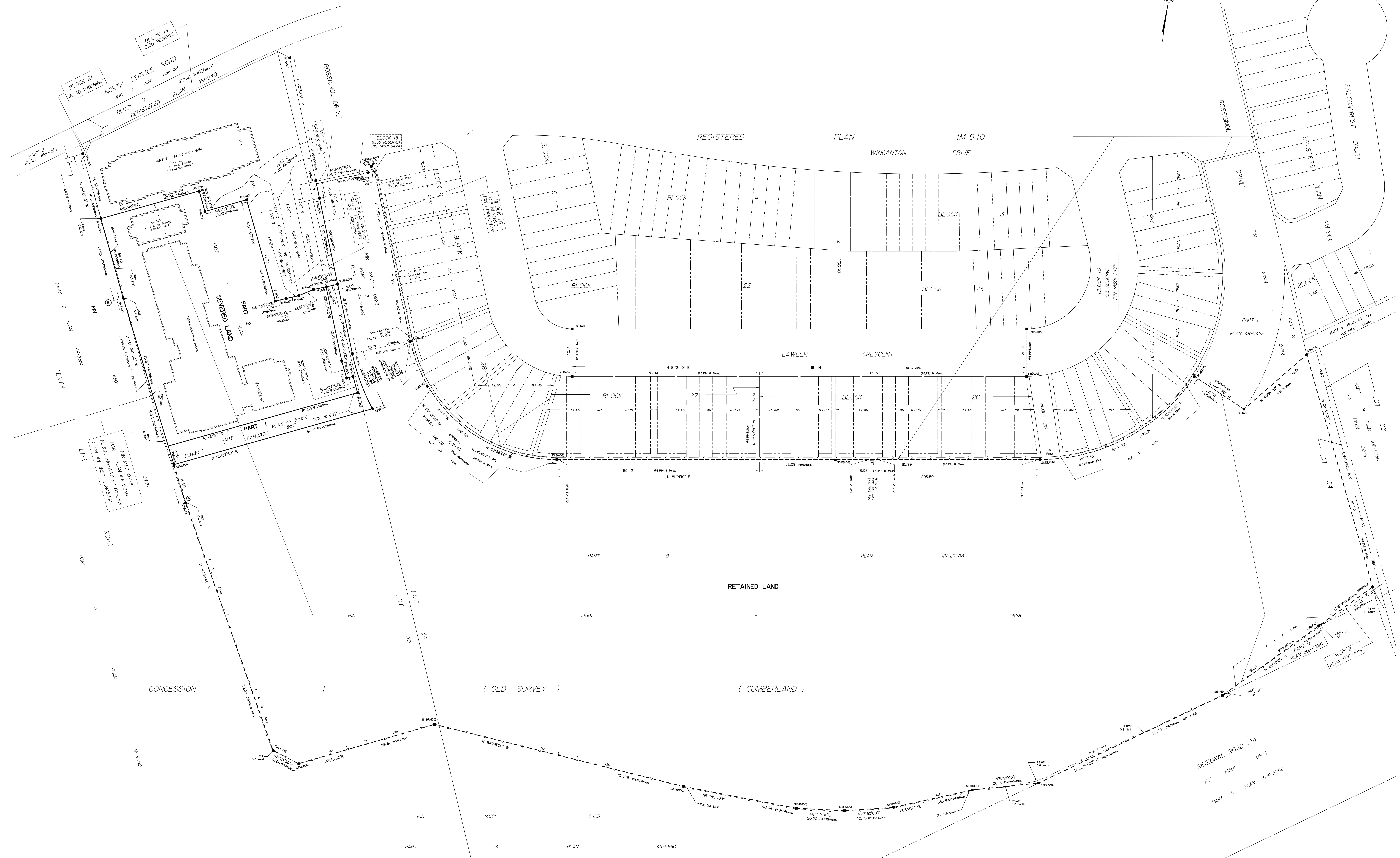
MMM DD YYYY  
Date  
V. Andrew Shabo  
Ontario Land Surveyor

- Notes & Legend**
- Denotes Survey Monument Planted
  - Survey Monument Found
  - SSB Standard Iron Bar
  - SSIB Short Standard Iron Bar
  - IB Iron Bar
  - CP Concrete Pin
  - WNT Witness
  - (AOC) Annis, O'Sullivan, Vollebakk Ltd.
  - Mess. Measured
  - PKW Post & Wire
  - CLF Chain Link Fence
  - (P1) Plan 4R-21854
  - (P2) Plan 4R-22349
  - (P3) Plan 4R-26592
  - (P4) Expropriation Plan 119851
  - (P5) Plan 4R-11422
  - (P6) Registered Plan 4M-940
  - (P7) Plan 4R-11984
  - (P8) Plan 50T-7345
  - (P9) Plan 4R-26684
  - (P10) Plan 4R-30028
  - NT Non Tangential

Distances shown on this plan are ground distances and can be converted to grid distances by multiplying by the combined scale factor of 0.999975. Bearings are grid, derived from Can-Nat 3.0 Real Time Network GPS observations on reference points A and B, shown hereon, having a bearing of N 25° 34' 00" W and are referenced to Specified Control Points 0191980184 and 01919843761, MTM Zone 18 (2° 30' West Longitude NAD-83) (original). Coordinates are derived from Can-Nat 3.0 Real Time Network GPS observations referenced to Specified Control Points 0191980184 and 01919843761, MTM Zone 18 (2° 30' West Longitude NAD-83) (original). Coordinate values are to urban accuracy in accordance with O. Reg. 216/10.

0191980184	Northing	5040610.16	Easting	384736.56
01919843761	Northing	5036178.12	Easting	372436.11
Point A	Northing	5039183.46	Easting	382663.07
Point B	Northing	5039274.85	Easting	382626.62

Caution: Coordinates cannot, in themselves, be used to re-establish corners or boundaries shown on this plan.



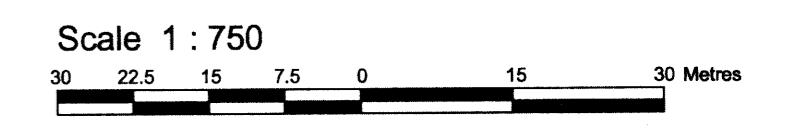
SCHEDULE			
PART	LOT	CONCESSION	PIN
1	PART OF 34 & 35	1 (OLD SURVEY)	ALL OF 14501-0774
2	PART OF 35		
3	PART OF 35		
4	PART OF 35		
5	PART OF 35		
6	PART OF 34 & 35		
7	PART OF 34 & 35		
8	PART OF 34 & 35		

I REQUIRE THIS PLAN TO BE DEPOSITED UNDER THE LAND TITLES ACT.  
 DATE: July 26, 2016  
 Edward M. Lancaster  
 ONTARIO LAND SURVEYOR

PLAN 4R-29684  
 RECEIVED AND DEPOSITED DATE: July 26, 2016  
 A. McMullen  
 REPRESENTATIVE FOR LAND REGISTRAR FOR THE LAND TITLES DIVISION OF OTTAWA-CARLETON NO. 4.

Committee of Adjustment  
 Received | Reçu le  
 2024-05-29  
 City of Ottawa | Ville d'Ottawa  
 Comité de dérogation

PLAN OF SURVEY OF  
**PART OF LOTS 34 AND 35**  
**CONCESSION 1 ( OLD SURVEY )**  
 Geographic Township of Cumberland  
**CITY OF OTTAWA**  
 Surveyed by Annis, O'Sullivan, Vollebek Ltd.



Metric  
 DISTANCES AND COORDINATES SHOWN ON THIS PLAN ARE IN METRES AND CAN BE CONVERTED TO FEET BY DIVIDING BY 0.3048.

Surveyor's Certificate  
 I CERTIFY THAT:  
 1. This survey and plan are correct and in accordance with the Surveys Act, the Surveyors Act and the Land Titles Act and the regulations made under them.  
 2. The survey was completed on the 21st day of July 2016.  
 July 26, 2016  
 Edward M. Lancaster  
 Ontario Land Surveyor

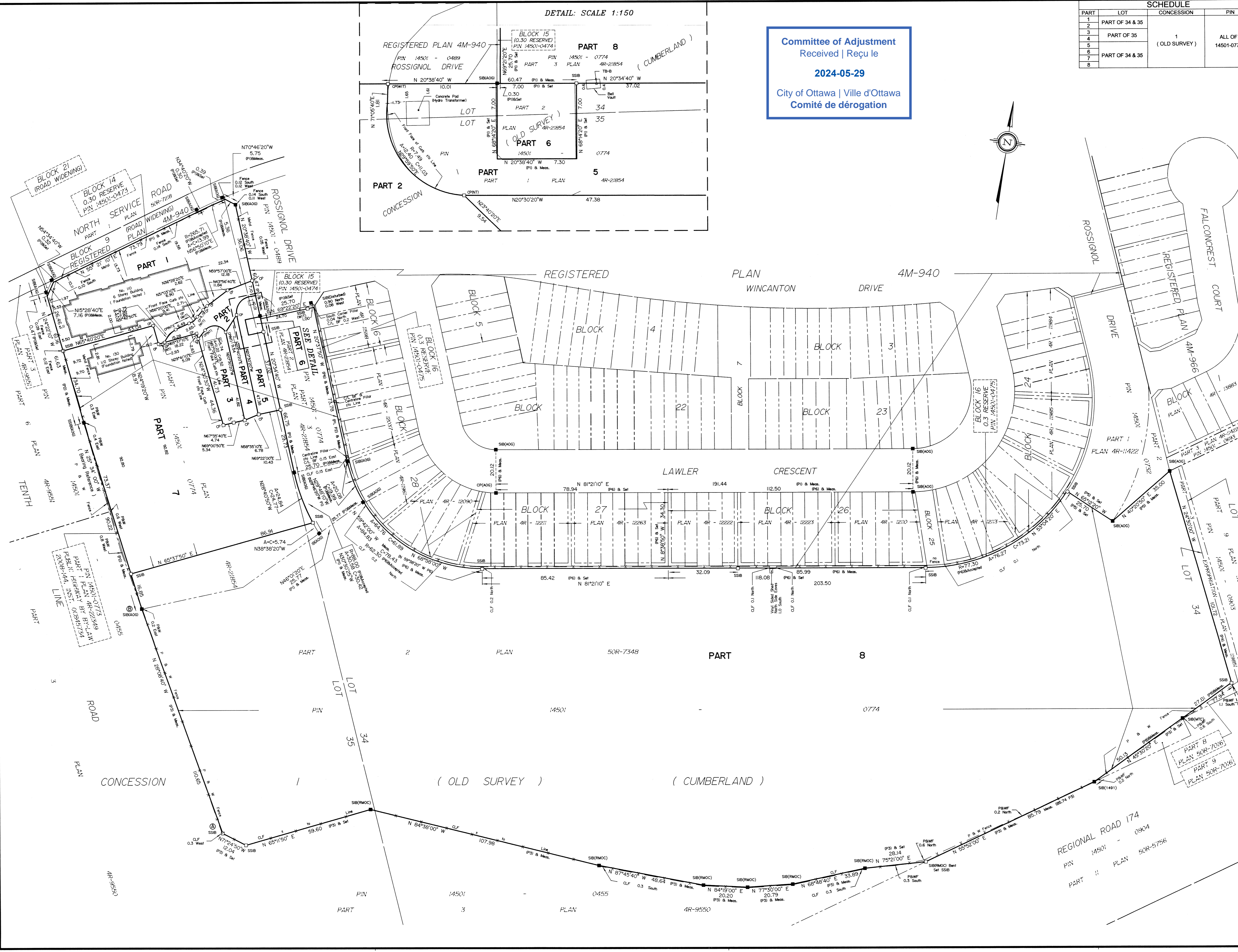
- Notes & Legend
- Denotes Survey Monument Planted
  - SIB Survey Monument Found
  - SSIB Standard Iron Bar
  - IB Short Standard Iron Bar
  - CP Iron Bar
  - CP Concrete Pin
  - (WIT) Witness
  - (AOG) Annis, O'Sullivan, Vollebek Ltd.
  - Meas. Measured
  - P&W Post & Wire
  - CLF Chain Link Fence
  - (P1) Plan 4R-21854
  - (P2) Plan 4R-23349
  - (P3) Plan 4R-9550
  - (P4) Expropriation Plan 119851
  - (P5) Plan 4R-11422
  - (P6) Registered Plan 4M-940
  - (P7) Plan 4R-11984
  - (P8) Plan 50R-7348
  - NT Non Tangential

Distances shown on this plan are ground distances and can be converted to grid distances by multiplying by the combined scale factor of 0.999975.  
 Bearings are grid, derived from Can-Net 3.0 Real Time Network GPS observations on reference points A and B, shown hereon, having a bearing of N 28°08'40" W and are referenced to Specified Control Points 01919680184 and 019198434761, MTM Zone 9 (76°30' West Longitude) NAD-83 (original).

Coordinates are derived from Can-Net 3.0 Real Time Network GPS observations referenced to Specified Control Points 01919680184 and 019198434761, MTM Zone 9 (76°30' West Longitude) NAD-83 (original).

Coordinate values are to urban accuracy in accordance with O. Reg. 216/10.  
 .01919680184 Northing 5040610.16 Easting 384736.56  
 .019198434761 Northing 5036178.12 Easting 372436.11  
 .Point A Northing 5039095.91 Easting 382717.75  
 .Point B Northing 5039193.46 Easting 382665.57

Caution: Coordinates cannot, in themselves, be used to re-establish corners or boundaries shown on this plan.



**Committee of Adjustment  
Received | Reçu le**  
**2024-05-29**  
**City of Ottawa | Ville d'Ottawa  
Comité de dérogation**



SCHEDULE			
AMPA (BLK)	PART	CONCESSION	PLAN
8005	1	PART OF 34 AND 35	1 (OLD SURVEY)
8005	2	PART OF 34 AND 35	PART OF 14601-14928

Part 1: Subject to assessment. Inv. OC2024097.  
**DRAFT PLAN OF SURVEY OF  
LOTS 34 AND 35  
CONCESSION 1 (OLD SURVEY)  
Geographic Township of Cumberland  
CITY OF OTTAWA**  
Surveyed by Annis, O'Sullivan, Vollebek Ltd.

Scale: 1:500  
The intended plot size of this plan is 1372 mm in width by 914 mm in height when plotted at a scale of 1:500.

**Metric DISTANCES AND COORDINATES SHOWN ON THIS PLAN ARE IN METRES AND CAN BE CONVERTED TO FEET BY DIVIDING BY 0.3048.**

**Surveyor's Certificate**  
I CERTIFY THAT:  
1. This survey and plan are correct and in accordance with the Survey Act, the Surveyors Act and the Land Titles Act and the regulations made under them.  
2. The survey was completed on the \_\_\_ day of \_\_\_\_\_, 2024.  
  
M.M. DO YYYY V. Andrew Sheib  
Date Chartered Land Surveyor  
This plan of survey refers to AOLS Plan Submission Form Number V.

- Notes & Legend**
- Dashed Survey Monument Plotted
  - Survey Monument Found
  - Standard Iron Bar
  - |— Short Standard Iron Bar
  - R— Iron Bar
  - CP— Concrete Pin
  - (M)— Witness
  - (M)— Annis, O'Sullivan, Vollebek Ltd.
  - M— Measured
  - P— Post & Wire
  - CLF— Chain Link Fence
  - (P1)— Plan 48-17654
  - (P2)— Plan 48-27349
  - (P3)— Plan 48-5550
  - (P4)— Registration Plan 119851
  - (P5)— Plan 48-11422
  - (P6)— Registration Plan 484-940
  - (P7)— Plan 48-11984
  - (P8)— Plan 48-22465
  - (P9)— Plan 48-25681
  - (P10)— Plan 48-30283
  - NT— Non Tangential

Distances shown on this plan are ground distances and can be converted to grid distances by multiplying by the combined scale factor of 0.99973. Bearings are grid, derived from Can-Net 3.0 Real Time Network GPS observations on reference points A and B, whose network bearing a bearing of N 25° 34' 07" W and are referenced to Specific Control Points 019198016 and 0191984781, MTM Zone 8 (19'30" West Longitude) NAD83 (original). Coordinates are derived from Can-Net 3.0 Real Time Network GPS observations referenced to Specific Control Points 019198016 and 0191984781, MTM Zone 8 (19'30" West Longitude) NAD83 (original). Coordinate values are to urban accuracy in accordance with O. Reg. 216/93.  
• 0191980164 Northing 5040610.16 Easting 384736.58  
• 01919847811 Northing 5038173.12 Easting 372436.11  
• Point A Northing 5038183.46 Easting 382835.47  
• Point B Northing 5038274.25 Easting 382836.62  
Caution: Coordinates cannot, in themselves, be used to re-establish corners or boundaries shown on this plan.

