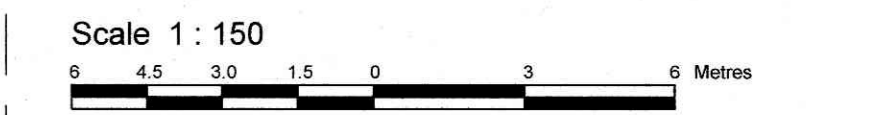


SURVEYOR'S REAL PROPERTY REPORT
PART 1 Plan of
PART OF LOT 23
IN BLOCK 17
REGISTERED PLAN 42
CITY OF OTTAWA

Surveyed by Annis, O'Sullivan, Vollebek Ltd.



Metric
 DISTANCES SHOWN ON THIS PLAN ARE IN METRES AND CAN BE CONVERTED TO FEET BY DIVIDING BY 0.3048

Surveyor's Certificate
 I CERTIFY THAT:
 1. This survey and plan are correct and in accordance with the Surveys Act, the Surveyors Act and the Land Titles Act and the regulations made under them.
 2. The survey was completed on the 29th day of May, 2023.

Date: June 6, 2023
 Signature: A.S. Bushman
 Andrew J. Bushman
 Ontario Land Surveyor

PART 2
 THIS PLAN MUST BE READ IN CONJUNCTION WITH SURVEY REPORT DATED: JUNE 6, 2023

ANNIS, O'SULLIVAN, VOLLEBEK LTD. grants to R. Rouleau ("The Client"), their solicitors, mortgagees, and other related parties, permission to use original, signed, sealed copies of the Surveyor's Real Property Report in transactions involving The Client.

Committee of Adjustment
 Received | Reçu le
 2024-05-31
 City of Ottawa | Ville d'Ottawa
 Comité de dérogation

Notes & Legend

Denotes	
—□—	Survey Monument Planted
—■—	Survey Monument Found
SIB	Standard Iron Bar
SSIB	Short Standard Iron Bar
IB	Iron Bar
CC	Cut Cross
CP	Concrete Pin
(WIT)	Witness
Meas.	Measured
(AOG)	Annis, O'Sullivan, Vollebek Ltd.
(P1)	Plan 4R-14105
(P2)	(647) Plan May 13, 1983
(P3)	(AOG) Plan November 17, 2000
(P4)	(AOG) Plan May 11, 2018
○ M+ST	Maintenance Hole (Storm Sewer)
○ M+S	Maintenance Hole (Sanitary)
— OHW —	Overhead Wires
— G —	Gas Meter
— S —	Hydro Meter
— B —	Board Fence
— MF —	Metal Fence
F.d.	Foundation
+65.00	Location of Elevations
+65.00	Top of Concrete Curb / Wall Elevation
+65.00	Top of Roof Parapet Elevations
+65.00	Top of Eave Elevations
C/L	Centreline
T/G	Top of Grate
— ST —	Underground Storm Sewer
— S —	Underground Sanitary Sewer
— W —	Underground Water
— B —	Underground Bell
— G —	Underground Gas
Ø	Diameter
○	Deciduous Tree
★	Coniferous Tree
CRW	Concrete Retaining Wall
BRW	Brick Retaining Wall
WTL	Centreline Wall to Line

ELEVATION NOTES
 1. Elevations shown are geodetic and are referred to the CGVD28 geodetic datum.
 2. It is the responsibility of the user of this information to verify that the job benchmark has not been altered or disturbed and that its relative elevation and description agrees with the information shown on this drawing.

UTILITY NOTES
 1. This drawing cannot be accepted as acknowledging all of the utilities and it will be the responsibility of the user of this information to verify that the job benchmark has not been altered or disturbed and that its relative elevation and description agrees with the information shown on this drawing.
 2. Only visible surface utilities were located.
 3. A field location of underground plant by the pertinent utility authority is mandatory before any work involving breaking ground, probing, excavating etc.
 4. Underground services and inverts are taken from City of Ottawa Engineering Plans C-15-08-C, Plan No. 1987 Sheet 4 of 10.

ASSOCIATION OF ONTARIO
 LAND SURVEYORS
 PLAN SUBMISSION FORM
 V-53765

THIS PLAN IS NOT VALID UNLESS IT IS AN EMBOSSED ORIGINAL COPY ISSUED BY THE SURVEYOR. In accordance with Regulation 1025, Section 29 (3).

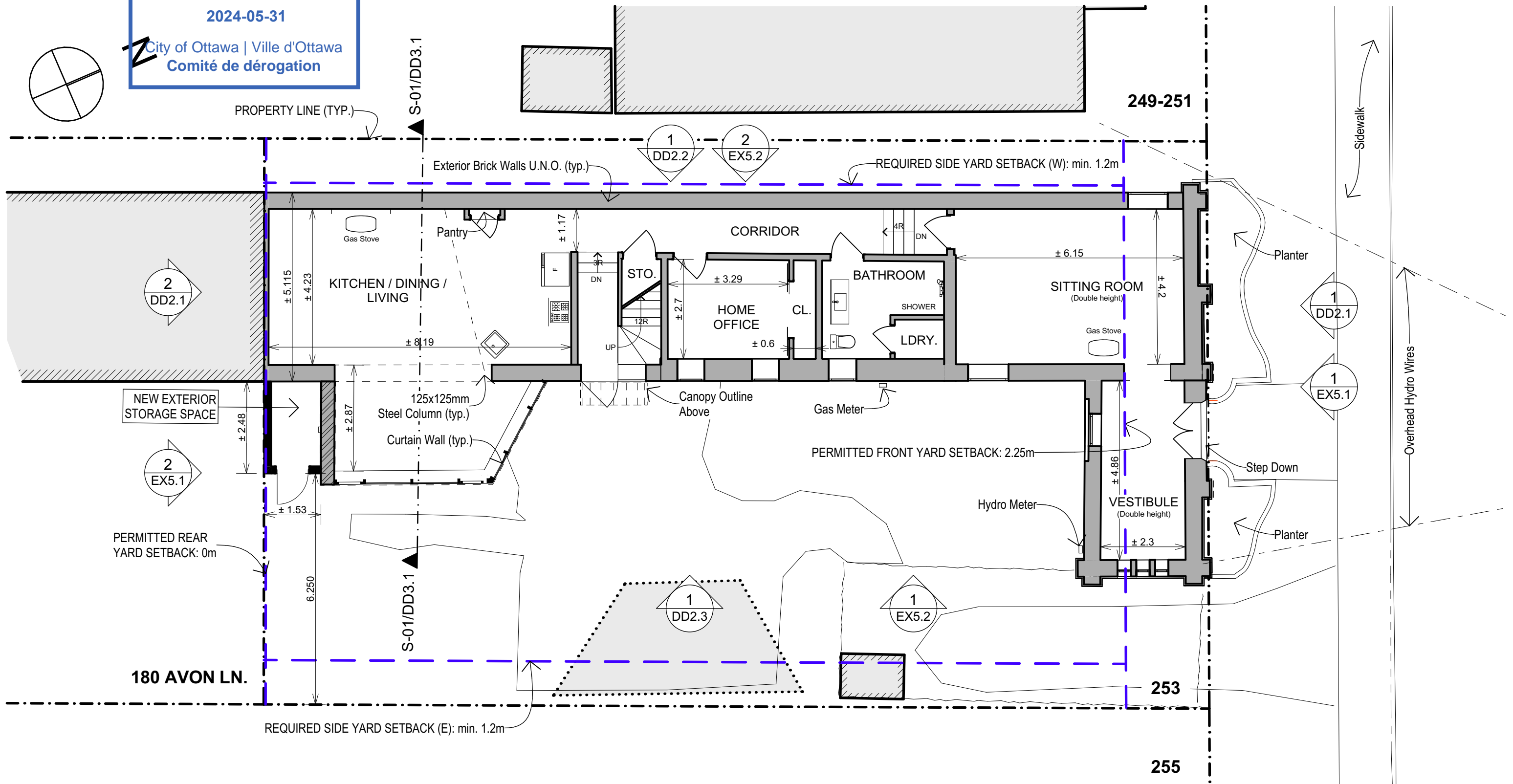
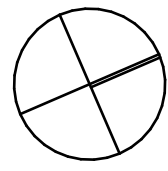
Bearings are grid, derived from the southerly limit of Mackay Street, shown to be N66°55'30"W on Plan 4R-26049 and are referred to the Central Meridian of MTM Zone 9 (76°30' West Longitude) NAD-83 (original).

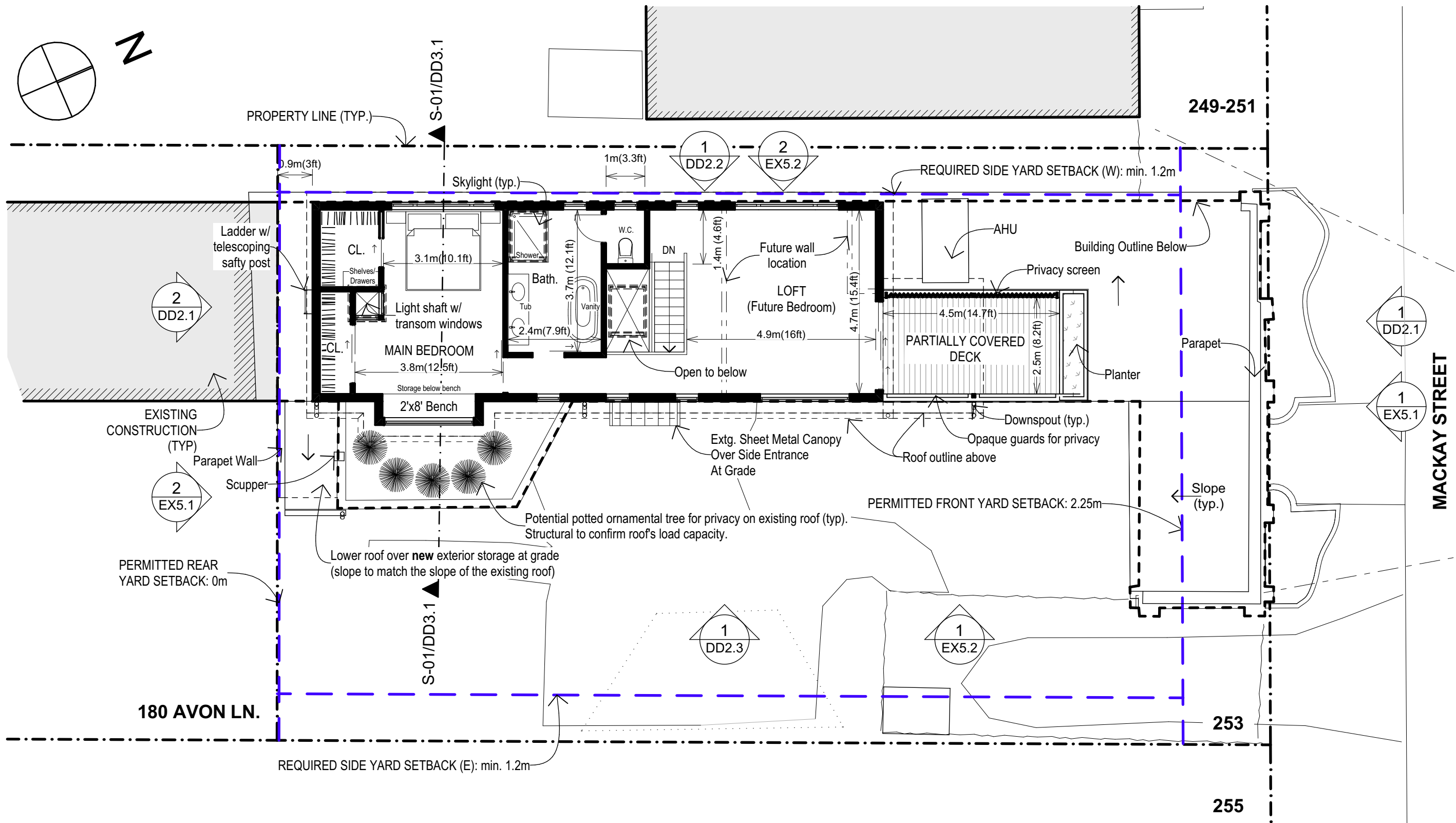
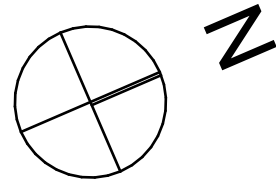
For bearing comparisons, a rotation of 0°01'40" counter-clockwise was applied to bearings on plan P1.

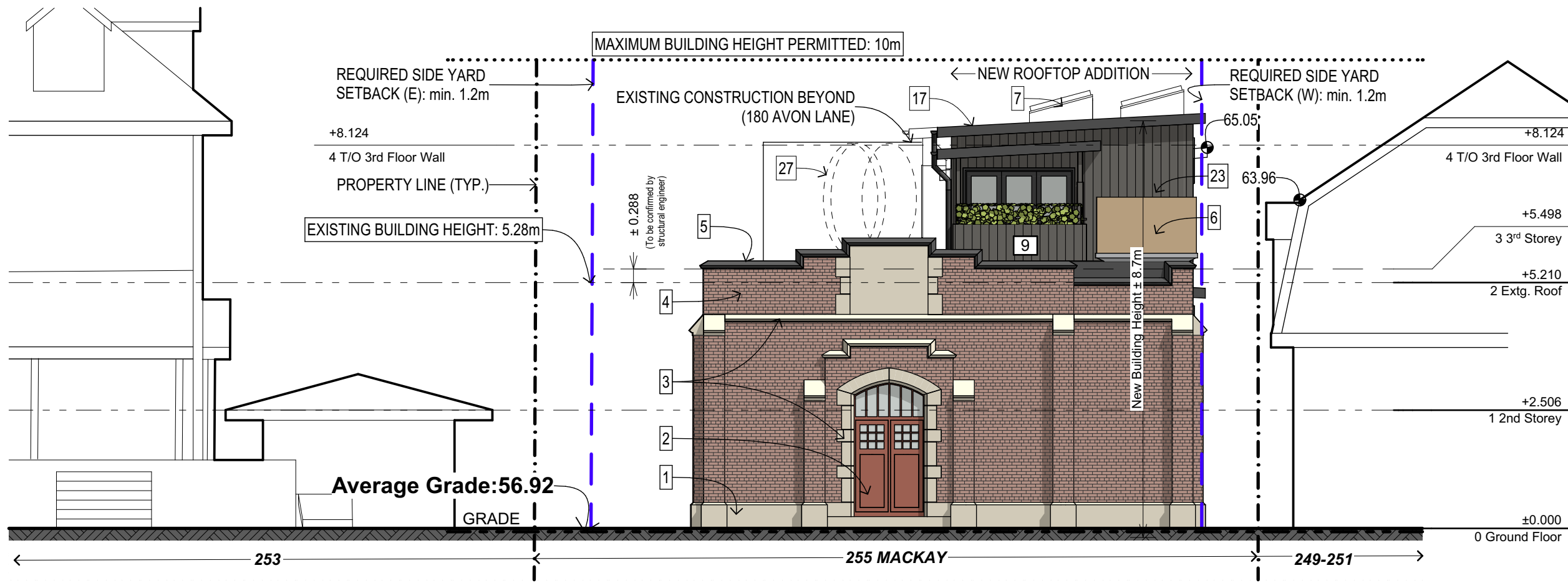
Committee of Adjustment
Received | Reçu le

2024-05-31

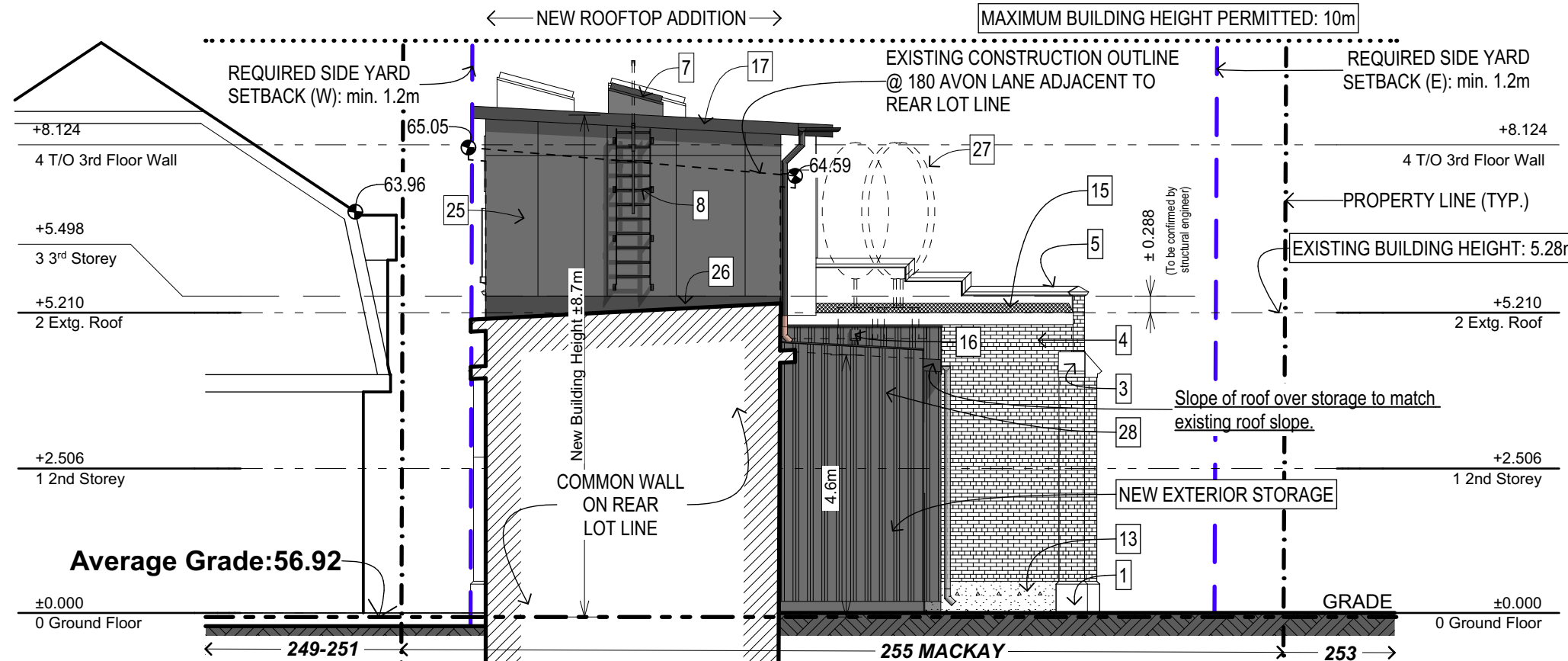
City of Ottawa | Ville d'Ottawa
Comité de dérogation







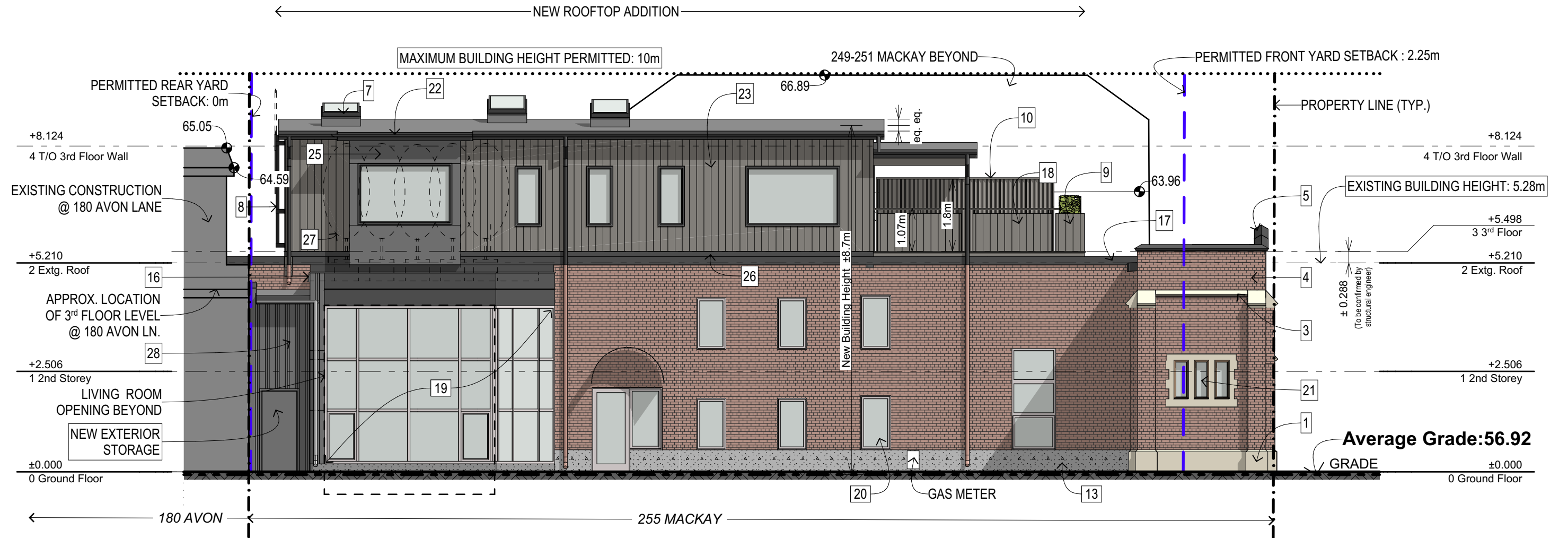
1. NORTH ELEVATION



2. SOUTH ELEVATION

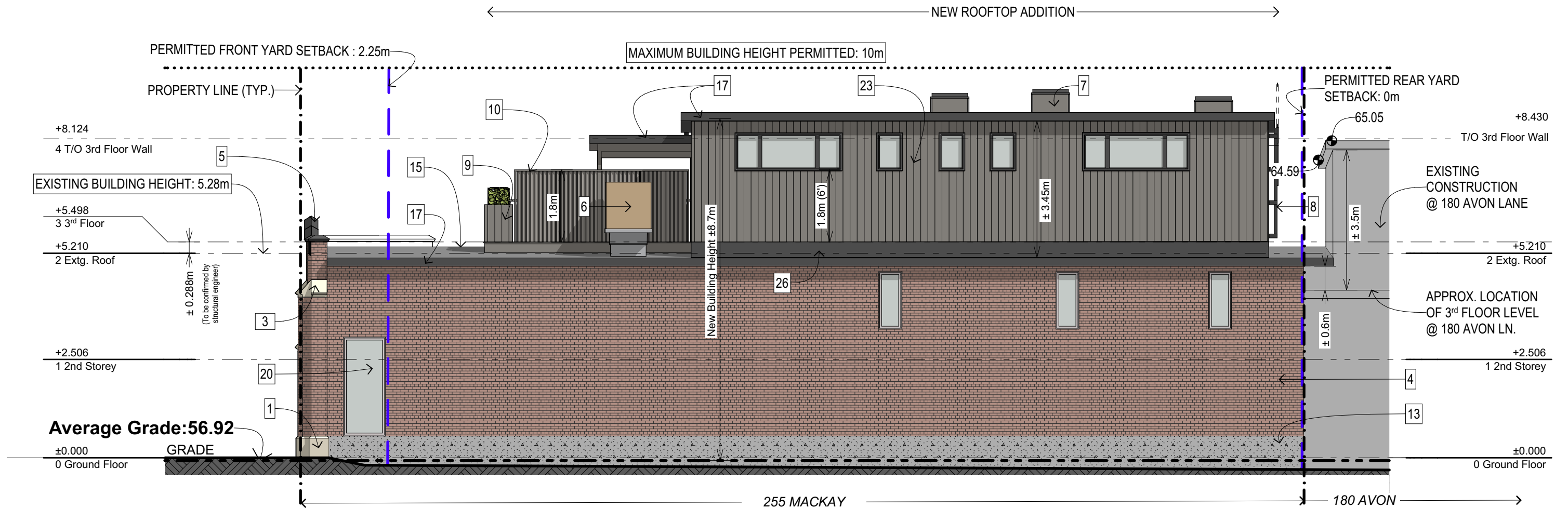
- LEGEND #**
- 1 STONE BASE
 - 2 EXTG. WOOD DOOR
 - 3 TYP. STONE MOULDING
 - 4 BRICK MASONRY
 - 5 PRE-FINISHED CAP FLASHING
 - 6 EXTG. ROOFTOP A.H.U.
 - 7 TYP. NEW MOTORIZED SKYLIGHT
 - 8 LADDER W/ TELESCOPING SAFETY POST
 - 9 PLANTER
 - 10 PRIVACY SCREEN
 - 11 RESERVED
 - 12 RESERVED
 - 13 EXPOSED CONCRETE UPSTAND
 - 14 RESERVED
 - 15 MOD. BIT. ROOFING MEMBRANE
 - 16 SCUPPER
 - 17 PRE-FINISHED METAL FASCIA
 - 18 OPAQUE GUARDS (CHARRED WOOD CLADDING)
 - 19 ALUMINUM & GLASS CURATIN WALL
 - 20 TYP. ALUMINUM FRAME WINDOW U.N.O.
 - 21 WOOD FRAME WINDOW
 - 22 PAINTED METAL AND GUTTER & DOWNSPOUT
 - 23 CHARRED WOOD CLADDING
 - 24 RESERVED
 - 25 FIBER-CEMENT CLADDING
 - 26 PRE-FINISHED WALL-TO-ROOF METAL FLASHING
 - 27 POTTED ORNAMENTAL TREE FOR PRIVACY (NOT SHOWN FOR CLARITY)
 - 28 CORRUGATED METAL CLADDING

Committee of Adjustment
 Received | Reçu le
2024-05-31
 City of Ottawa | Ville d'Ottawa
 Comité de dérogation



LEGEND #

- 1 STONE BASE 2 EXTG. WOOD DOOR 3 TYP. STONE MOULDING 4 BRICK MASONRY 5 PRE-FINISHED CAP FLASHING 6 EXTG. ROOFTOP A.H.U. 7 TYP. NEW MOTORIZED SKYLIGHT 8 LADDER W/ TELESCOPING SAFETY POST
- 9 PLANTER 10 PRIVACY SCREEN 11 RESERVED 12 RESERVED 13 EXPOSED CONCRETE UPSTAND 14 RESERVED 15 MOD. BIT. ROOFING MEMBRANE 16 SCUPPER 17 PRE-FINISHED METAL FASCIA
- 18 OPAQUE GUARDS (CHARRED WOOD CLADDING) 19 ALUMINUM & GLASS CURATIN WALL 20 TYP. ALUMINUM FRAME WINDOW U.N.O. 21 WOOD FRAME WINDOW 22 PAINTED METAL AND GUTTER & DOWNSPOUT
- 23 CHARRED WOOD CLADDING 24 RESERVED 25 FIBER-CEMENT CLADDING 26 PRE-FINISHED WALL-TO-ROOF METAL FLASHING 27 POTTED ORNAMENTAL TREE FOR PRIVACY (NOT SHOWN FOR CLARITY) 28 CORRUGATED METAL CLADDING



LEGEND #

- 1 STONE BASE 2 EXTG. WOOD DOOR 3 TYP. STONE MOULDING 4 BRICK MASONRY 5 PRE-FINISHED CAP FLASHING 6 EXTG. ROOFTOP A.H.U. 7 TYP. NEW MOTORIZED SKYLIGHT 8 LADDER W/ TELESCOPING SAFETY POST
- 9 PLANTER 10 PRIVACY SCREEN 11 RESERVED 12 RESERVED 13 EXPOSED CONCRETE UPSTAND 14 RESERVED 15 MOD. BIT. ROOFING MEMBRANE 16 SCUPPER 17 PRE-FINISHED METAL FASCIA
- 18 OPAQUE GUARDS (CHARRED WOOD CLADDING) 19 ALUMINUM & GLASS CURATIN WALL 20 TYP. ALUMINUM FRAME WINDOW U.N.O. 21 WOOD FRAME WINDOW 22 PAINTED METAL AND GUTTER & DOWNSPOUT
- 23 CHARRED WOOD CLADDING 24 RESERVED 25 FIBER-CEMENT CLADDING 26 PRE-FINISHED WALL-TO-ROOF METAL FLASHING 27 POTTED ORNAMENTAL TREE FOR PRIVACY (NOT SHOWN FOR CLARITY) 28 CORRUGATED METAL CLADDI