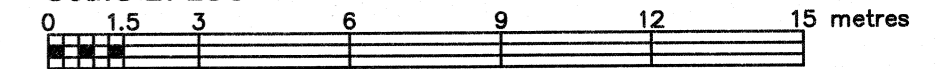


PART OF LOT 6 CONCESSION 3 (OTTAWA FRONT) GEOGRAPHIC TOWNSHIP OF GLOUCESTER CITY OF OTTAWA

FARLEY, SMITH & DENIS SURVEYING LTD. 2023

Scale 1: 150



Metric Note Distances and/or coordinates on this plan are in metres and can be converted to feet by dividing by 0.3048.

Distance Note Distances shown on this plan are ground distances and can be converted to grid distances by multiplying by the combined scale factor of 0.99996.

Bearing Note Bearings are grid, are referred to the westerly limit of Part 34 Plan SR-4980 having a bearing of N 23° 34' 30" W as shown on Plan SR-4980 and are referred to the Central Meridian of MTM Zone 9 (76°30' West Longitude) Nad-83 (Original).

Elevation Notes 1. Elevations shown are geodetic and are referred to Geodetic Datum CGVD-1928 :1978. (Monument No. 19680238) 2. It is the responsibility of the user of this information to verify that the job benchmark has not been altered or disturbed and that its relative elevation and description agrees with the information shown on this drawing.

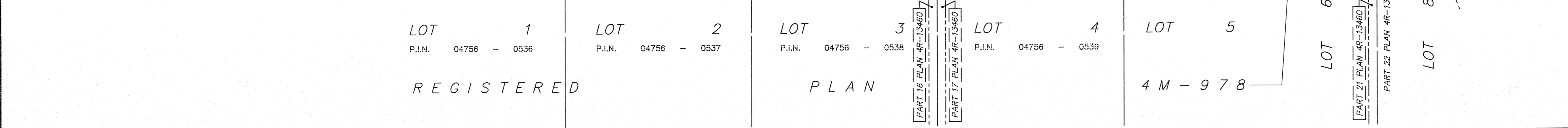
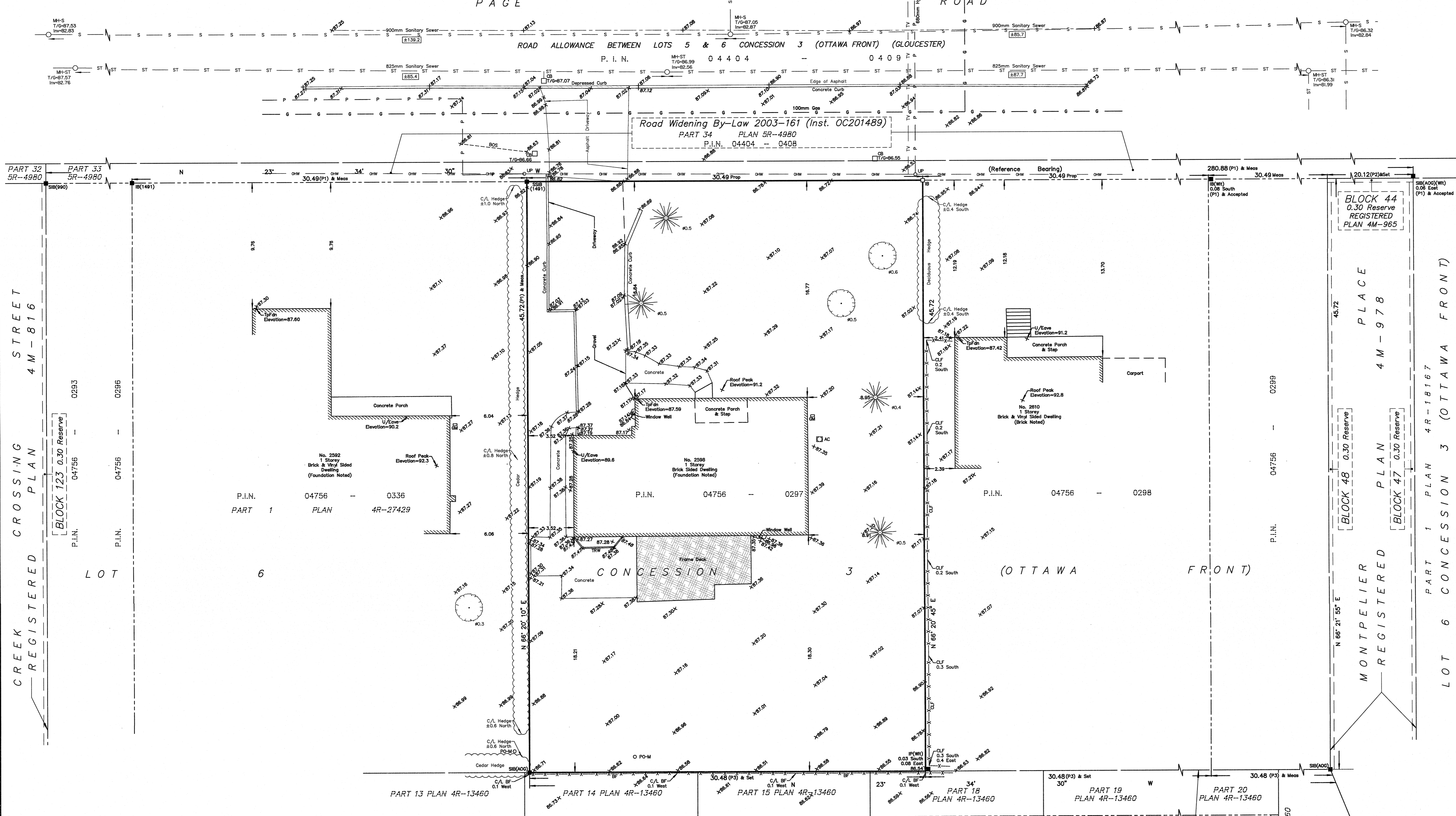
Utility Notes 1. This drawing cannot be accepted as acknowledging all of the utilities and it will be the responsibility of the user to contact the respective utility authorities for confirmation. 2. Only visible surface utilities were located. 3. Underground utility data derived from City of Ottawa utility sheet reference: I-30-08, 1-30-14-C, VF01-801-112-09 & VF01-804-112-10. 4. Sanitary and storm sewer grades and inverts were derived from: Field measurement. 5. A field location of underground plant by the pertinent utility authority is mandatory before any work involving breaking ground, probing, excavating etc.

- Notes & Legend Denotes Survey Monument Planted, Survey Monument Found, Standard Iron Bar, Short Standard Iron Bar, Iron Bar, Iron Pipe, Witness, Measured, Plan 4R-27429, Registered Plan 4M-978, Plan 5R-4675, Maintenance Hole (Storm), Maintenance Hole (Sanitary), Valve Chamber (Watermain), Underground Storm Sewer, Underground Sanitary Sewer, Underground Water, Underground Power, Underground Cable, Underground Gas, Overhead Wires, Utility Pole, Catch Basin, Fire Hydrant, Water Valve, Gas Meter, Metal Pole, Air Conditioner, Diameter, Chain Link Fence, Board Fence, Timber Retaining Wall, Invert, Top of Grate, Underside of Eave, Top of Foundation, Centreline, Location of Elevations, Top of Concrete Curb/Retaining Wall Elevation, Property Line.

- Deciduous Tree - The Symbol shown denotes location and trunk diameter only. Size of its root system/overhead canopy may be smaller/larger than the symbol size depicted on this plan. Coniferous Tree - The Symbol shown denotes location and trunk diameter only. Size of its root system/overhead canopy may be smaller/larger than the symbol size depicted on this plan.

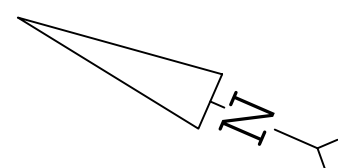
Site Area=1393.8 sq.m.

Committee of Adjustment Received | Reçu le 2023-11-27 City of Ottawa | Ville d'Ottawa Comité de dérogation



Surveyor's Certificate I certify that: 1. This survey and plan are correct and in accordance with the Surveys Act, the Surveyors Act and the Regulations made under them. 2. The survey was completed on the 4th day of October, 2023. Date: Oct 13/2023 Signature: Emad Alrefaai Ontario Land Surveyor This plan of survey relates to AOLS Plan Submission Form Number V-56830 FARLEY, SMITH & DENIS SURVEYING LTD.

WARNING NO PERSON MAY COPY, REPRODUCE, DISTRIBUTE OR ALTER THIS PLAN IN WHOLE OR IN PART WITHOUT THE WRITTEN PERMISSION OF FARLEY, SMITH & DENIS SURVEYING LTD. ONTARIO LAND SURVEYORS CANADA LAND SURVEYORS Unit 275, 30 COLONNADE ROAD, OTTAWA, ONTARIO K2E 7J6 TEL. (613) 727-8226 E-mail: fdsurveys@bellnet.ca



Committee of Adjustment
Received | Reçu le
2023-11-27
City of Ottawa | Ville d'Ottawa
Comité de dérogation

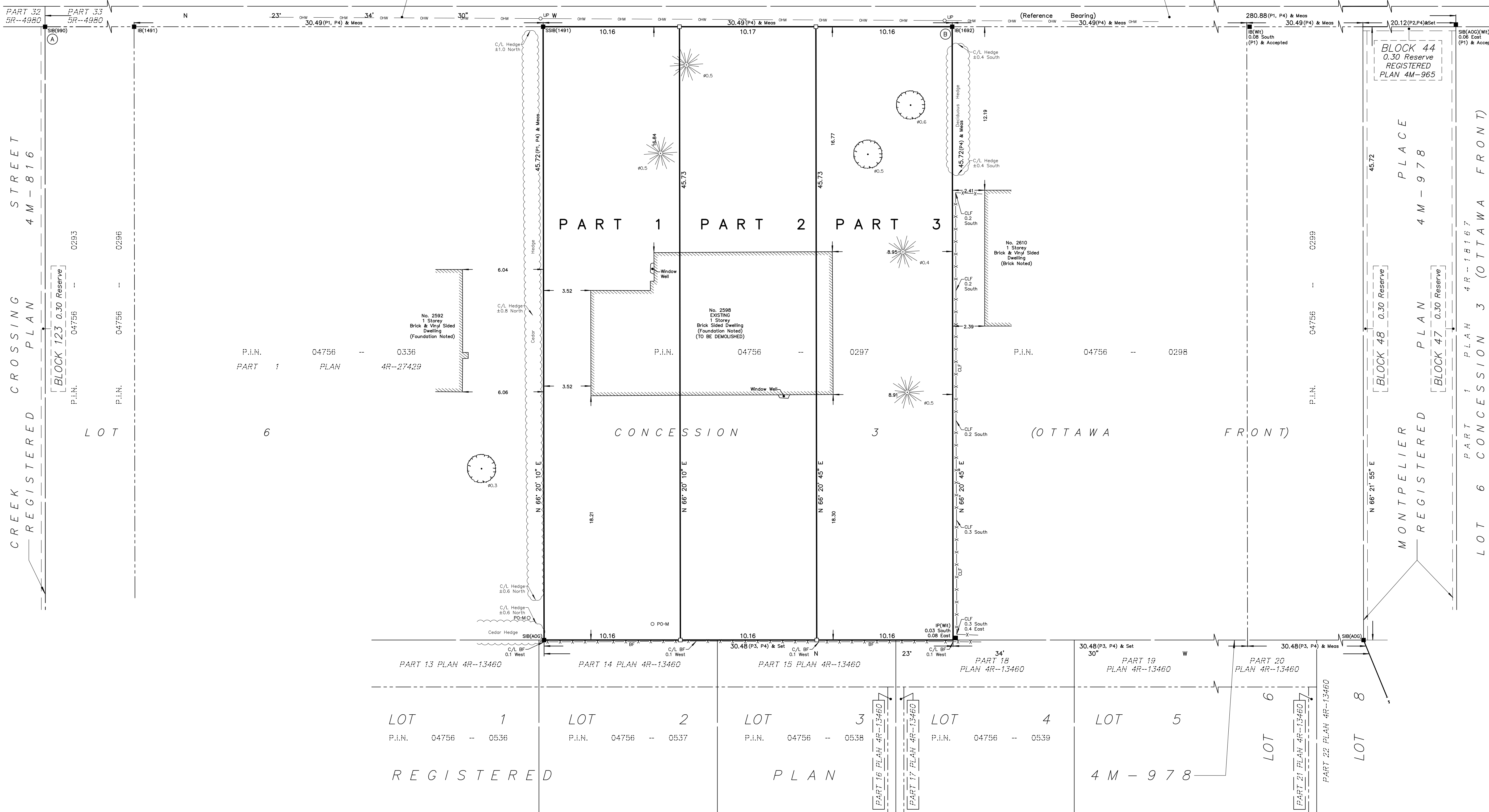
P A G E

R O A D

ROAD ALLOWANCE BETWEEN LOTS 5 & 6 CONCESSION 3 (OTTAWA FRONT) (GLOUCESTER)

P. I. N. 0 4 4 0 4 -- 0 4 0 9

Road Widening By-Law 2003-161 (Inst. OC201489)
PART 34 PLAN 5R-4980
P.I.N. 04404 -- 0408

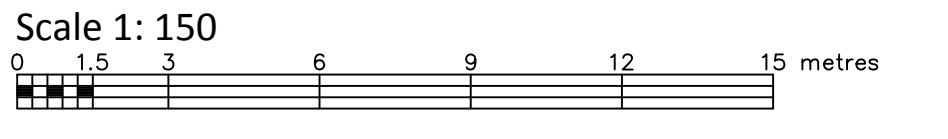


I REQUIRE THIS PLAN TO BE DEPOSITED UNDER THE LAND TITLES ACT.
DATE: _____
EMAD ALREFAAI
ONTARIO LAND SURVEYOR

PLAN 4R-
RECEIVED AND DEPOSITED
DATE: _____
REPRESENTATIVE FOR LAND REGISTRAR
FOR THE LAND TITLES DIVISION OF
OTTAWA-CARLETON NO. 4.

SCHEDULE				
PART	LOT	CONCESSION	PIN	AREA (Sq.m.)
1			464.5	464.5
2	PART OF 6	3 (OTTAWA FRONT)	ALL OF 04756 - 0297	464.9
3				464.5

PLAN OF SURVEY OF
PART OF LOT 6
CONCESSION 3 (OTTAWA FRONT)
GEOGRAPHIC TOWNSHIP OF GLOUCESTER
CITY OF OTTAWA
FARLEY, SMITH & DENIS SURVEYING LTD. 2023
Scale 1: 150



Metric Note
Distances and/or coordinates on this plan are in metres and can be converted to feet by dividing by 0.3048.

Distance Note
Distances shown on this plan are ground distances and can be converted to grid distances by multiplying by the combined scale factor of 0.99996.

Bearing Note
Bearings are grid, are referred to the westerly limit of Part 34 Plan 5R-4980 having a bearing of N 23° 34' 30" W as shown on Plan 5R-4980 and are referred to the Central Meridian of MTM Zone 9 (76°30' West Longitude) Nad-83 (Original).

CO-ORDINATES WERE DERIVED FROM CAN-NET REAL TIME NETWORK OBSERVATIONS, MTM ZONE 9, N.A.D. 1983 (ORIGINAL)		
POINT ID	NORTHING	EASTING
(A)	5033625.43	381272.94
(B)	5033442.29	381352.86
01919680184	5040610.16	384736.56
019198434761	5036178.12	372436.11

CO-ORDINATES ARE MTM ZONE 9, N.A.D. 1983 (ORIGINAL), TO URBAN ACCURACY PER SEC. 14 (2) OF O. REG. 216/10, AND CANNOT, IN THEMSELVES, BE USED TO RE-ESTABLISH CORNERS OR BOUNDARIES SHOWN ON THIS PLAN.

- Notes & Legend
- Denotes Survey Monument Planted
 - IB Standard Iron Bar
 - IBS Short Standard Iron Bar
 - IP Iron Pipe
 - IP (Wit) Witness
 - Meas Measured
 - (P1) Plan 4R-27429
 - (P2) Registered Plan 4M-978
 - (P3) Plan 5R-4675
 - (P4) Plan by (1692) dated October 13, 2023 (File No. 369-23)
 - OHV Overhead Wires
 - OP Utility Pole
 - OP-M Metal Pole
 - CLF Chain Link Fence
 - BF Board Fence
 - C/L Centreline
 - Deciduous Tree - The Symbol shown denotes location and trunk diameter only. Size of its root system/overhead canopy may be smaller/larger than the symbol size depicted on this plan.
 - Coniferous Tree - The Symbol shown denotes location and trunk diameter only. Size of its root system/overhead canopy may be smaller/larger than the symbol size depicted on this plan.

Surveyor's Certificate
I certify that:
1. This survey and plan are correct and in accordance with the Surveys Act, the Surveyors Act and the Land Titles Act and the Regulations made under them.
2. The survey was completed on the ___ day of _____, 2023.

Date _____ Emad Alrefaai
Ontario Land Surveyor

This plan of survey relates to AOLS Plan Submission Form Number V-XXXXX

FARLEY, SMITH & DENIS SURVEYING LTD.
ONTARIO LAND SURVEYORS
CANADA LAND SURVEYORS
Unit 275, 30 COLONNADE ROAD, OTTAWA, ONTARIO K2E 7J6
TEL: (613) 727-8226 E-mail: fdsurveys@bellnet.ca