

100 JAMES CUMMINGS AVENUE TREE INFORMATION REPORT

This document is presented in the language it was provided.
Ce document est présenté dans la langue dans laquelle il a été fourni.

Committee of Adjustment
Received | Reçu le

2023-11-07

City of Ottawa | Ville d'Ottawa
Comité de dérogation



This document is presented in the language it was provided.
Ce document est présenté dans la langue dans laquelle il a été fourni.

DATE: OCTOBER 3, 2023

OTTAWA TREE REPORTS

Table of Contents

Introduction 3

 Contact Information 3

 Policy Framework 3

Tree Information 4

 Tree Inventory and Assessment Methodology 4

 Subject Trees 4

 Impacted Trees 5

 Tree Protection Details 5

Tree Compensation and Replanting 5

Summary 5

 Application Fees 5

 Tree Information Table 7

 Tree Inventory Plan 8

APPENDIX B 9

 Tree Protection Specification 10

Self-Declaration Statement 11

Introduction

Ottawa Tree Reports was retained by Brennan Thomas of JFSA Canada INC. to complete a Tree Information Report in support of a consent to sever and minor variance application for the subject property located at 100 James Cummings Avenue in Ottawa, Ontario; at the published date of this report, its Ottawa Tree Reports understanding that this application is only for the severance and variance. No further construction or development related activities are scheduled to be performed.

The work plan for this Tree Information Report included the following:

- Prepare inventory of the tree resources on the proposed parcel (Part 1) to be severed
- Document the findings in a Tree Information Report.

Contact Information

Owner Information:

Name: Tim Sims
 Phone #: 613-828-5121
 Email: Timothy.Sims@toromont.com

Arborist Information:

Name: Scott Petrie
 Phone #: 613-204-8687
 Email: info@ottawatreeereports.com

Contractor Information:

Name:
 Phone #:
 Email:

Policy Framework

The subject property is subject to the provisions of the City of Ottawa's Tree Protection By-law 2020-340. The purpose of this by-law is for the protection of municipal trees and municipal natural areas in the City of Ottawa and trees on private property in the urban area of the City of Ottawa.

City of Ottawa tree protection requirements were applied during the Tree Information Report planning process. These protection requirements indicate a minimum distance at which the critical root zone (CRZ) must be protected.

The CRZ distances allow for maximum development potential while providing sufficient space to ensure the tree(s) are not subject to any long term adverse due to the impacts of development. In instances where the CRZ will be encroached upon and impacted, an Adjusted Tree Protection Zone (Adj TPZ) has been calculated based upon impacts to the CRZ; further mitigation measure may be required to ensure there are no adverse long-term impacts to the tree(s).

Tree Information

Field assessments were conducted on September 18, 2023 the results of the assessment are provided in the Tree Information Table found in Appendix “A”.

Tree Inventory and Assessment Methodology

All trees on the subject property and those that maybe impacted on adjacent properties were inventoried and assessed, with specific focus on trees that are protected and thus subject to the provisions of the City of Ottawa’s Tree Protection By-law 2020-340.

Tree inspections were limited to visual, on-ground examinations. No boring, probing, or sonic tomography was employed during the assessments. Any data and information collected is based on the conditions at the time of inspection.

Subject Trees

A total of 4 trees were inventoried and assessed for this severance application, Trees are located in or adjacent to Part 1 as noted in the Tree Inventory Plan located in Appendix “A”. It was determined that no protected trees will be impacted as part of this application.

Table 1 – Tree Information Dashboard

# of Trees Inventoried	# of Protected Trees	# Protected Tree Impacts	Protected Tree Removals		Protected Tree Injuries	
			# of City Trees	# of Private Trees	# of City Trees	# of Private Trees
4	4	0	0	0	0	0

Tree # 1 is a 138cm Black Willow (*Salix nigra.*) that is completely located on City of Ottawa (asset ID 8358656) property (unopened road allowance) adjacent to the NW corner of the proposed Part 1 of the severed property. This tree is over mature, with poor trunk integrity, and fair canopy structure; this tree is showing signs of past storm damage in the scaffold branches, large trunk section removed on the north side of the tree, crown restoration pruning by City of Ottawa Forestry Services is recommended.

Tree # 2 is a 53 cm Black Locust (*Robina pseudoacacia*) that is completely located on City of Ottawa property (No asset ID on GeoOttawa) adjacent to the NE corner of the proposed Part 1 of the severed property. This tree has a poor trunk integrity with a large longitudinal scar that is present on the pedestal of the tree, from the trunk flare to the first branch unions (over 4m in length), this tree has been attempting to compartmentalize and seal this wound for many years.

Tree # 3 is a 46 cm Black Locust (*Robina pseudoacacia*) that is completely located on Private property adjacent to the SE corner of the proposed Part 1 of the severed property and is in fair condition.

Tree # 4 is a 28 cm Austrian Pine (*Pinus nigra*) that is completely located on City of Ottawa (No asset ID on GeoOttawa) property (unopened road allowance) adjacent to the SW corner of the proposed Part 1 of the severed property. This trees overall condition is fair however the needles are showing signs of needle blight.

Impacted Trees

There will be no impacts to protected trees as part of the severance application.

Tree Protection Details

At the publication date of this report no trees are required to have tree protection measures installed as outlined in the City of Ottawa's Tree Protection Specification in Appendix "B". However, should future development be decided, it is recommended that a more detailed Tree Information Report be prepared by this firm in accordance with the City of Ottawa's Tree Protection By-Law

Tree Compensation and Replanting

No trees are proposed to be removed with the associated works; therefore, Tree Compensation and Replanting is not required.

Summary

Ottawa Tree Reports was retained by Brennan Thomas of JFSA Canada INC. to complete a Tree Information Report in support of a consent to severe and minor variance application for the subject property located at 100 James Cummings Avenue in Ottawa, Ontario.

A total of 4 trees were inventoried as part of this report and it noted that 3 trees are City of Ottawa owned, and 1 is Privately owned all treed resources are considered protected trees in accordance with the City's By-law. At the time of this publication, no construction or development related activities are scheduled to be performed, therefore Tree Protection measures at this time have not been prescribed.

As previously noted, should future construction or development related activities be decided it is recommended that a more detailed Tree Information Report be prepared by Ottawa Tree Reports.

Application Fees

At this time no tree removals are required to facilitate the proposed works, therefore no additional tree removal or compensation fees should be required. Application fees outlined are not considered final until confirmed by the City of Ottawa.

Respectfully Submitted,

Scott Petrie

**Scott Petrie, Dip EMT, EDDM
Ottawa Tree Reports**

APPENDIX A

Tree Information Table

Table 2 – Tree Information Table

Tree #	Species		DBH (cm)	Ownership	By-Law Protected	Condition			Arborist Rec	Tree Planting Required	Planting #s	CRZ (m)	CRZ Impacted	Rec Excavation Limit (m)	Adj TPZ (m)	Specification Recommendations	Notes
	Common	Botanical				(Poor/Fair/Good)											
						Trunk	Canopy	Canopy									
						Integrity	Structure	Vigour									
1	Willow spp	<i>Salix spp</i>	138	City	Yes	P	F	G	Other	No	0	13.8	No	NA	NA		over mature willow in the NW corner of Part 1, signs of past storm damage are present (torn scaffold), large trunk section removed on the N side of tree.
2	Black Locust	<i>Robinia pseudoacacia</i>	53	City	Yes	P	F	G	Other	No	0	5.3	No	NA	NA		Large longitudinal scar is present on the pedestal of the tree for over 4m in length, tree has been attempting to seal around this for many years.
3	Black Locust	<i>Robinia pseudoacacia</i>	46	Private	Yes	F	F	G	Other	No	0	4.6	No	NA	NA		
4	Austrian Pine	<i>Pinus nigra</i>	28	City	Yes	F	F	F	Other	No	0	2.8	No	NA	NA		Tree is located on City property on the unopened road allowance to the west of the subject property. Needles are showing early signs of blight.

Tree Inventory Plan

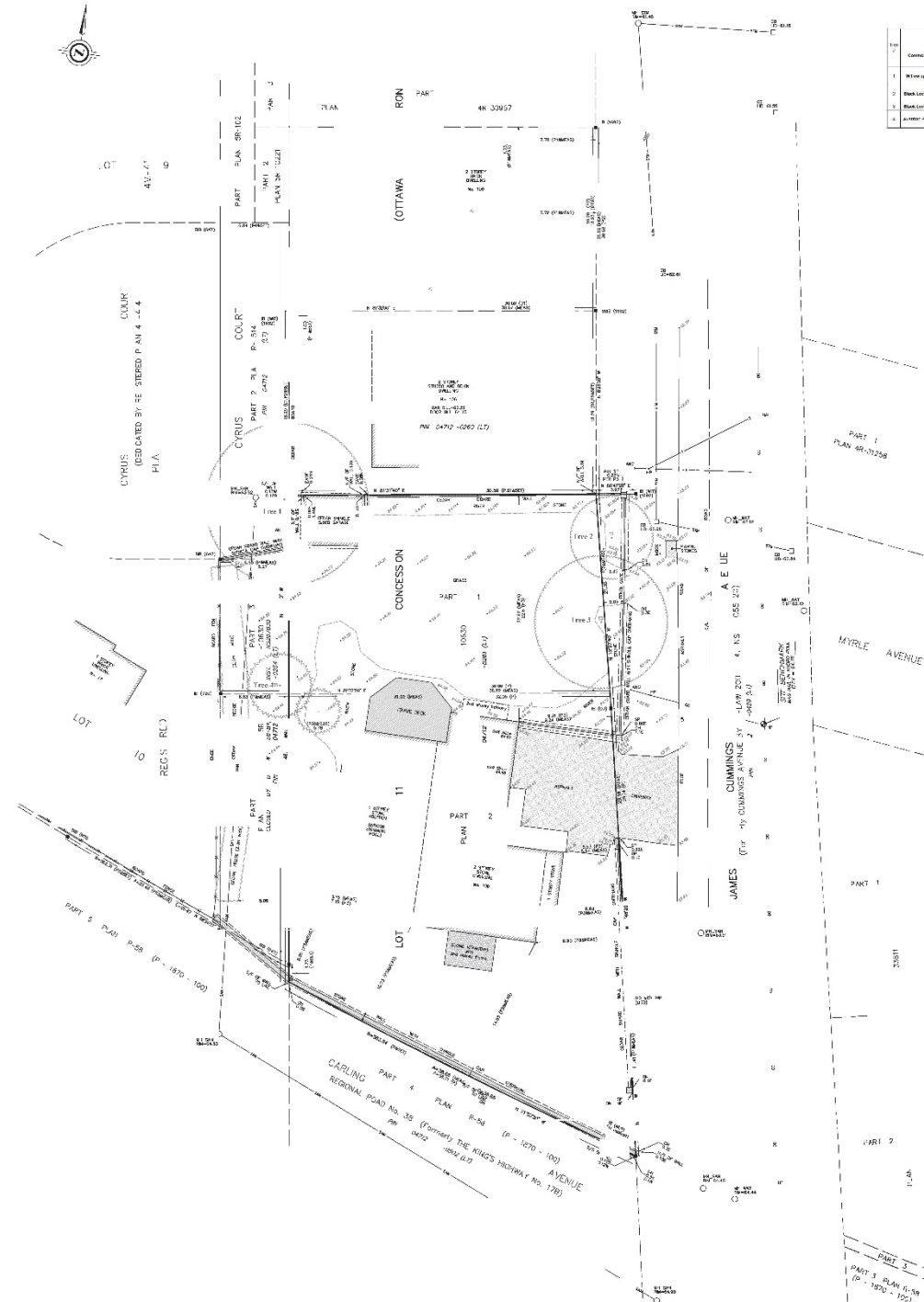
Tree Inventory Plan

100 James Cummings Avenue

Tree ID	Common Name	Scientific Name	DBH (cm)	Height (m)	Condition	Coordinates		Notes
						North	West	
1	Red Maple	Acer rubrum	100	15	Good	471.1	9	Overgrown with ivy. No crown at this time. May be removed in future.
2	Black Locust	Rhynchocorymb blackii	15	10	Good	471.1	9	Large specimen for a young tree. Excellent specimen for a young tree. Excellent specimen for a young tree.
3	Black Locust	Rhynchocorymb blackii	15	10	Good	471.1	9	Excellent specimen for a young tree. Excellent specimen for a young tree. Excellent specimen for a young tree.
4	Black Locust	Rhynchocorymb blackii	15	10	Good	471.1	9	Excellent specimen for a young tree. Excellent specimen for a young tree. Excellent specimen for a young tree.

TOPOGRAPHIC LEGEND

- SPR 1 SPRUCE GRACE BELL
- SPR 2 SPRUCE GRACE BELL
- SPR 3 SPRUCE GRACE BELL
- SPR 4 SPRUCE GRACE BELL
- SPR 5 SPRUCE GRACE BELL
- SPR 6 SPRUCE GRACE BELL
- SPR 7 SPRUCE GRACE BELL
- SPR 8 SPRUCE GRACE BELL
- SPR 9 SPRUCE GRACE BELL
- SPR 10 SPRUCE GRACE BELL
- SPR 11 SPRUCE GRACE BELL
- SPR 12 SPRUCE GRACE BELL
- SPR 13 SPRUCE GRACE BELL
- SPR 14 SPRUCE GRACE BELL
- SPR 15 SPRUCE GRACE BELL
- SPR 16 SPRUCE GRACE BELL
- SPR 17 SPRUCE GRACE BELL
- SPR 18 SPRUCE GRACE BELL
- SPR 19 SPRUCE GRACE BELL
- SPR 20 SPRUCE GRACE BELL
- SPR 21 SPRUCE GRACE BELL
- SPR 22 SPRUCE GRACE BELL
- SPR 23 SPRUCE GRACE BELL
- SPR 24 SPRUCE GRACE BELL
- SPR 25 SPRUCE GRACE BELL
- SPR 26 SPRUCE GRACE BELL
- SPR 27 SPRUCE GRACE BELL
- SPR 28 SPRUCE GRACE BELL
- SPR 29 SPRUCE GRACE BELL
- SPR 30 SPRUCE GRACE BELL
- SPR 31 SPRUCE GRACE BELL
- SPR 32 SPRUCE GRACE BELL
- SPR 33 SPRUCE GRACE BELL
- SPR 34 SPRUCE GRACE BELL
- SPR 35 SPRUCE GRACE BELL
- SPR 36 SPRUCE GRACE BELL
- SPR 37 SPRUCE GRACE BELL
- SPR 38 SPRUCE GRACE BELL
- SPR 39 SPRUCE GRACE BELL
- SPR 40 SPRUCE GRACE BELL
- SPR 41 SPRUCE GRACE BELL
- SPR 42 SPRUCE GRACE BELL
- SPR 43 SPRUCE GRACE BELL
- SPR 44 SPRUCE GRACE BELL
- SPR 45 SPRUCE GRACE BELL
- SPR 46 SPRUCE GRACE BELL
- SPR 47 SPRUCE GRACE BELL
- SPR 48 SPRUCE GRACE BELL
- SPR 49 SPRUCE GRACE BELL
- SPR 50 SPRUCE GRACE BELL



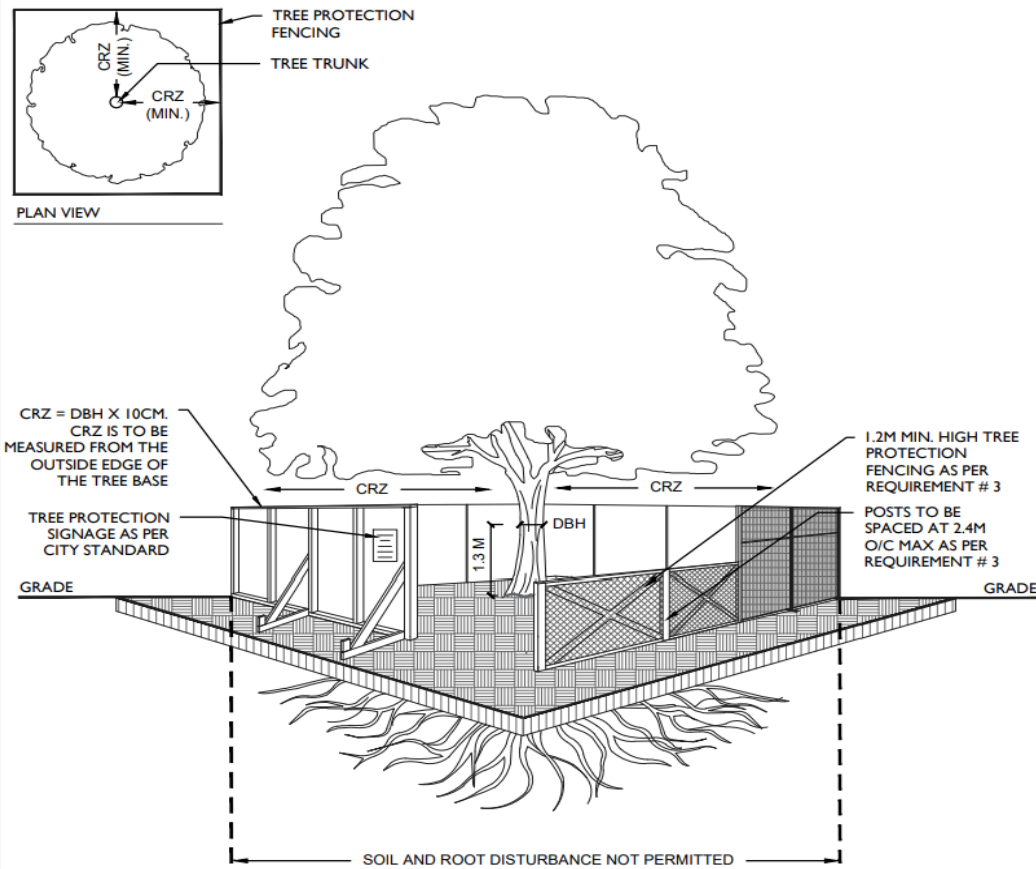
tree information only provided by



www.ottawatreesports.com
 info@ottawatreesports.com
 613-221-8587

APPENDIX B

Tree Protection Specification



- TREE PROTECTION REQUIREMENTS:**
1. PRIOR TO ANY WORK ACTIVITY WITHIN THE CRITICAL ROOT ZONE (CRZ = 10 X DIAMETER) OF A TREE, TREE PROTECTION FENCING MUST BE INSTALLED SURROUNDING THE CRITICAL ROOT ZONE, AND REMAIN IN PLACE UNTIL THE WORK IS COMPLETE.
 2. UNLESS PLANS ARE APPROVED BY CITY FORESTRY STAFF, FOR WORK WITHIN THE CRZ:
 - DO NOT PLACE ANY MATERIAL OR EQUIPMENT - INCLUDING OUTHOUSES;
 - DO NOT ATTACH ANY SIGNS, NOTICES OR POSTERS TO ANY TREE;
 - DO NOT RAISE OR LOWER THE EXISTING GRADE;
 - TUNNEL OR BORE WHEN DIGGING;
 - DO NOT DAMAGE THE ROOT SYSTEM, TRUNK, OR BRANCHES OR ANY TREE;
 - ENSURE THAT EXHAUST FUMES FROM ALL EQUIPMENT ARE NOT DIRECTED TOWARD ANY TREE CANOPY.
 - DO NOT EXTEND HARD SURFACE OR SIGNIFICANTLY CHANGE LANDSCAPING
 3. TREE PROTECTION FENCING MUST BE AT LEAST 1.2M IN HEIGHT, AND CONSTRUCTED OF RIGID OR FRAMED MATERIALS (E.G. MODULOC - STEEL, PLYWOOD HOARDING, OR SNOW FENCE ON A 2"X4" WOOD FRAME) WITH POSTS 2.4M APART, SUCH THAT THE FENCE LOCATION CANNOT BE ALTERED. ALL SUPPORTS AND BRACING MUST BE PLACED OUTSIDE OF THE CRZ, AND INSTALLATION MUST MINIMISE DAMAGE TO EXISTING ROOTS. (SEE DETAIL)
 4. THE LOCATION OF THE TREE PROTECTION FENCING MUST BE DETERMINED BY AN ARBORIST AND DETAILED ON ANY ASSOCIATED PLANS FOR THE SITE (E.G. TREE CONSERVATION REPORT, TREE INFORMATION REPORT, ETC). THE PLAN AND CONSTRUCTED FENCING MUST BE APPROVED BY CITY FORESTRY STAFF PRIOR TO THE COMMENCEMENT OF WORK.
 5. IF THE FENCED TREE PROTECTION AREA MUST BE REDUCED TO FACILITATE CONSTRUCTION, MITIGATION MEASURES MUST BE PRESCRIBED BY AN ARBORIST AND APPROVED BY CITY FORESTRY STAFF. THESE MAY INCLUDE THE PLACEMENT OF PLYWOOD, WOOD CHIPS, OR STEEL PLATING OVER THE ROOTS FOR PROTECTION OR THE PROPER PRUNING AND CARE OF ROOTS WHERE ENCOUNTERED.
- THE CITY'S TREE PROTECTION BY-LAW, 2020-340 PROTECTS BOTH CITY-OWNED TREES, CITY-WIDE, AND PRIVATELY-OWNED TREES WITHIN THE URBAN AREA. PLEASE REFER TO WWW.OTTAWA.CA/TREEBYLAW FOR MORE INFORMATION ON HOW THE TREE BY-LAW APPLIES.

ACCESSIBLE FORMATS AND COMMUNICATION SUPPORTS ARE AVAILABLE, UPON REQUEST



TREE PROTECTION SPECIFICATION

TO BE IMPLEMENTED FOR RETAINED TREES, BOTH ON SITE AND ON ADJACENT SITES, PRIOR TO ANY TREE REMOVAL OR SITE WORKS AND MAINTAINED FOR THE DURATION OF WORK ACTIVITIES ON SITE.

SCALE:	NTS
DATE:	MARCH 2021
DRAWING NO.:	1 of 1

Self-Declaration Statement

By signing this application declaration, the owner, arborist and contractor (if known at time of application) which confirms that all parties agree with the information provided and will respect the proposed work and mitigation measures (if required). Furthermore, the signature of the owner is also acknowledging and understanding that a City of Ottawa Forestry Staff may enter your property at a reasonable time for the purpose of carrying out an inspection. You also acknowledge and understand that failure to abide by the recommendations of the approved Tree Information Report, damaging or destructing trees identified for protection, you will be responsible to bear fully the cost of compensation, removal and replacement.

It is the owner/applicant's responsibility to ensure that all protection and mitigation measures described in the Tree Information Report are followed, and where necessary are done so under the supervision of an arborist.

Owner/Applicant

Tim SIMS

Print Name

timothy sims

Signature

Arborist

Scott Petrie

Print Name

Scott Petrie

Signature

Contractor

Print Name