

**METRIC**  
DISTANCES AND COORDINATES SHOWN ON THIS PLAN ARE IN METRES  
AND CAN BE CONVERTED TO FEET BY DIVIDING BY 0.3048

| SCHEDULE |             |            |                        |            |
|----------|-------------|------------|------------------------|------------|
| PART     | LOT         | CONCESSION | PIN                    | Area(sqrm) |
| 1        |             |            | PART OF PIN 04538-1085 | 9575       |
| 2        | Part Lot 14 | 3          | PART OF PIN 04538-0580 | 64         |

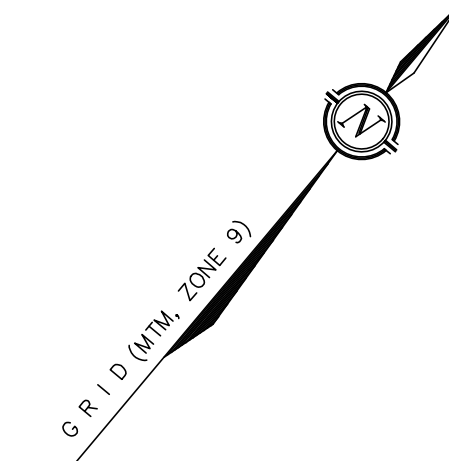
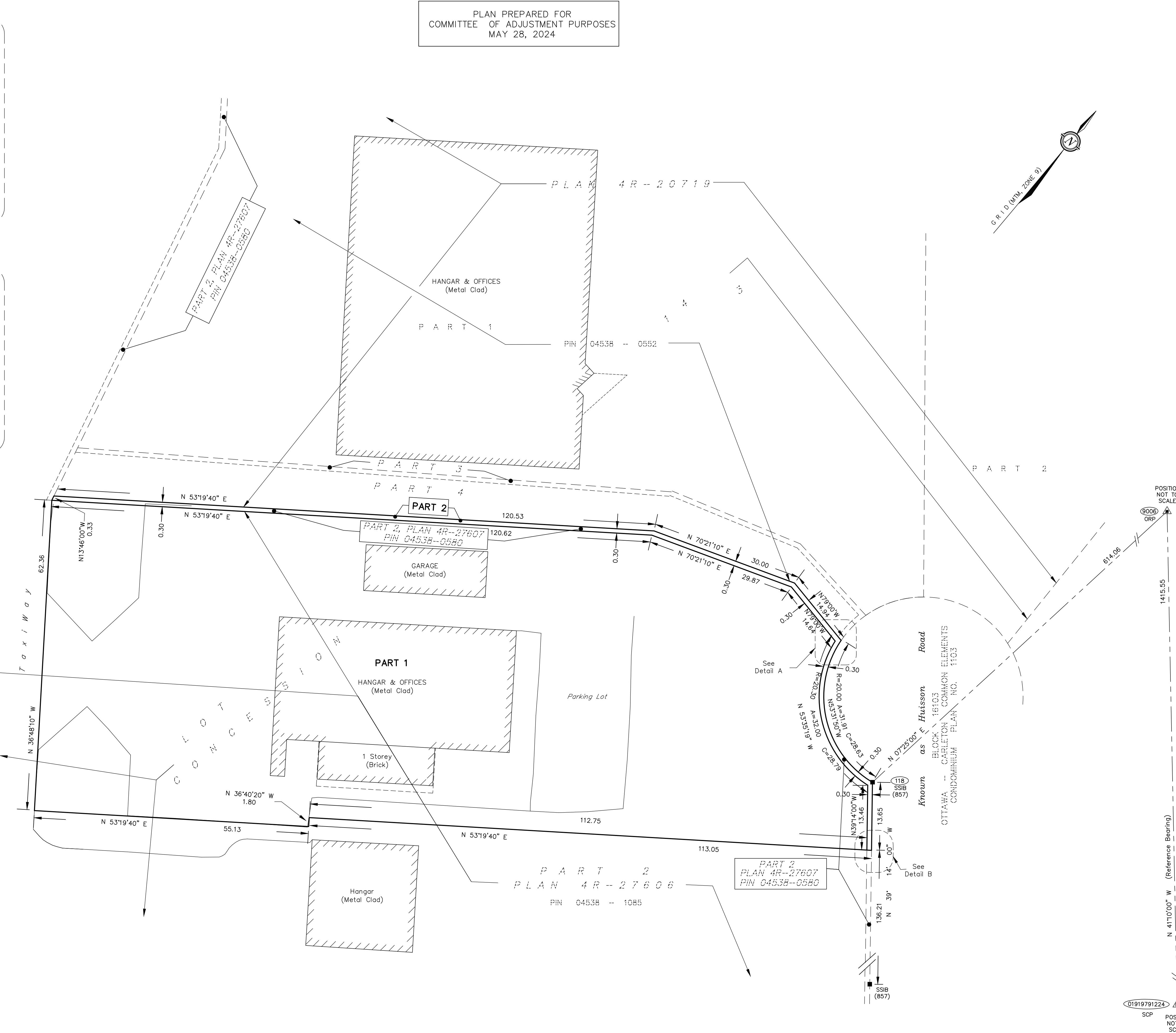
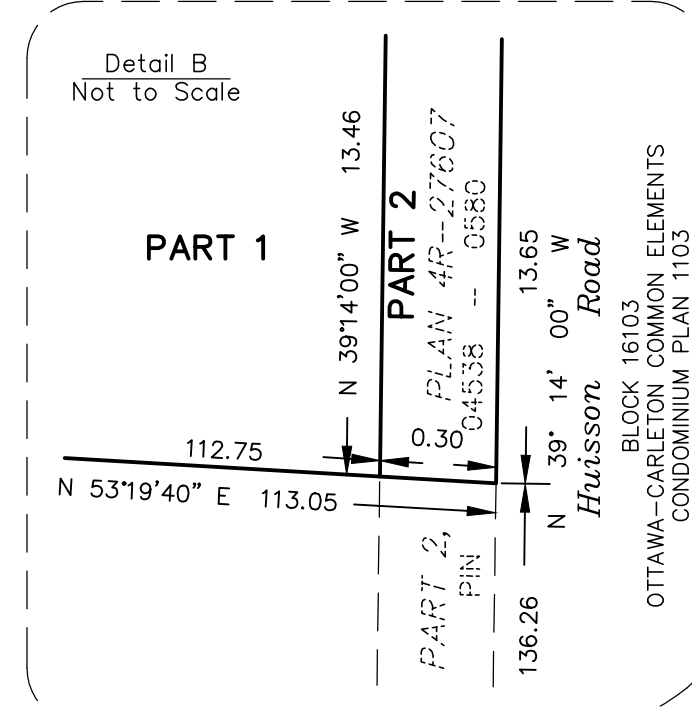
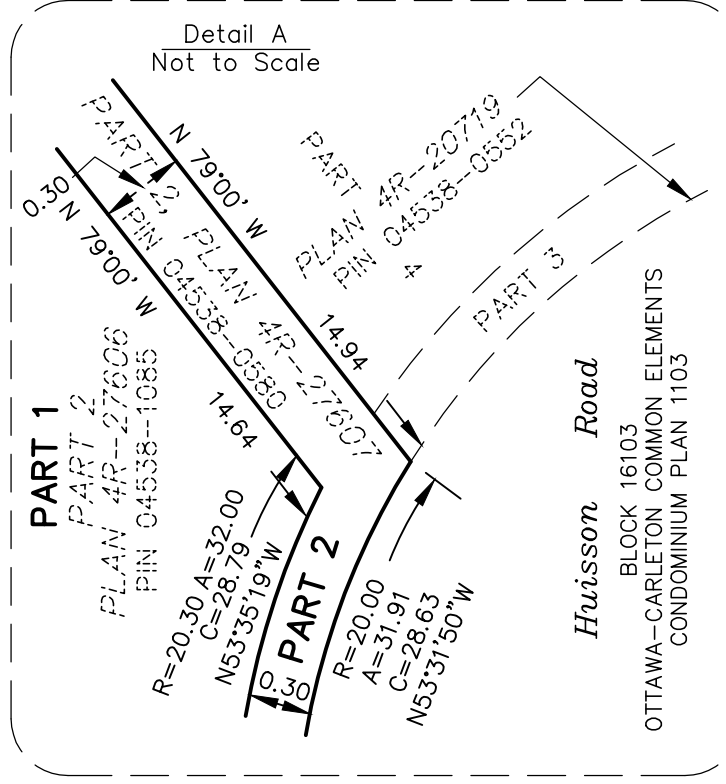
I REQUIRE THIS PLAN TO BE DEPOSITED UNDER THE LAND TITLES ACT.

DATE \_\_\_\_\_

REPRESENTATIVE FOR THE LAND REGISTRAR FOR THE CITY OF OTTAWA - CARLETON (N° 4)

DATE \_\_\_\_\_

PLAN PREPARED FOR  
COMMITTEE OF ADJUSTMENT PURPOSES  
MAY 28, 2024



PLAN OF SURVEY OF  
PART OF LOT 14  
CONCESSION 3  
GEOGRAPHIC TOWNSHIP OF HUNTLEY  
CITY OF OTTAWA

SCALE 1 : 400

0 10 20 40 metres

**FAIRHALL, MOFFATT & WOODLAND LIMITED**  
ONTARIO LAND SURVEYORS

- NOTES**
- BEARINGS ARE GRID, DERIVED FROM HORIZONTAL CONTROL MONUMENT 01919791224 (E 343594.67, N 5020109.91) AND FROM OBSERVED REFERENCE POINT 9006 BY REAL TIME NETWORK OBSERVATIONS AND ARE REFERRED TO THE CENTRAL MERIDIAN, 76°30'W LONGITUDE MTM ZONE 9, (NAD83 ORIGINAL).
  - DISTANCES ARE GROUND AND CAN BE CONVERTED TO GRID BY MULTIPLYING BY THE COMBINED SCALE FACTOR 999905.
  - ALL SURVEY MONUMENTS FOUND ARE (857) UNLESS NOTED OTHERWISE.

- LEGEND**
- - SURVEY MONUMENT SET
  - - SURVEY MONUMENT FOUND
  - ▲ - PROJECT CONTROL MONUMENT
  - SIB - STANDARD IRON BAR
  - SSIB - SHORT STANDARD IRON BAR
  - IB - IRON BAR
  - (P1) - PLAN 4R-27606
  - (S) - SET
  - (M) - MEASURED
  - (857) - FAIRHALL, MOFFATT & WOODLAND LIMITED, O.L.S.
  - PIN - PROPERTY IDENTIFIER NUMBER
  - ORP - OBSERVED REFERENCE POINT
  - SCP - SPECIFIED CONTROL POINT

COORDINATES WERE DERIVED FROM SPECIFIED CONTROL POINT SCP 01919791224 AND FROM REAL TIME NETWORK OBSERVATIONS (SMARTNET) ON OBSERVED REFERENCE POINT 9006.

COORDINATES HAVE BEEN DETERMINED TO AN URBAN ACCURACY IN ACCORDANCE WITH SECTION 14(2) OF O.REG 216/10.

| POINT ID    | NORTHING   | EASTING    |
|-------------|------------|------------|
| 118         | 5020566.56 | 342583.707 |
| 9006        | 5021175.42 | 342662.96  |
| 01919791224 | 5020109.91 | 343594.67  |

COORDINATES CANNOT IN THEMSELVES BE USED TO RE-ESTABLISH CORNERS OR BOUNDARIES SHOWN ON THIS PLAN.

**SURVEYOR'S CERTIFICATE**

I CERTIFY THAT:

- THIS SURVEY AND PLAN ARE CORRECT AND IN ACCORDANCE WITH THE SURVEYS ACT, THE SURVEYORS ACT, THE LAND TITLES ACT AND THE REGULATIONS MADE UNDER THEM.
- THE SURVEY WAS COMPLETED ON \_\_\_\_\_

DATE \_\_\_\_\_

JOHN H. GUTRI  
ONTARIO LAND SURVEYOR

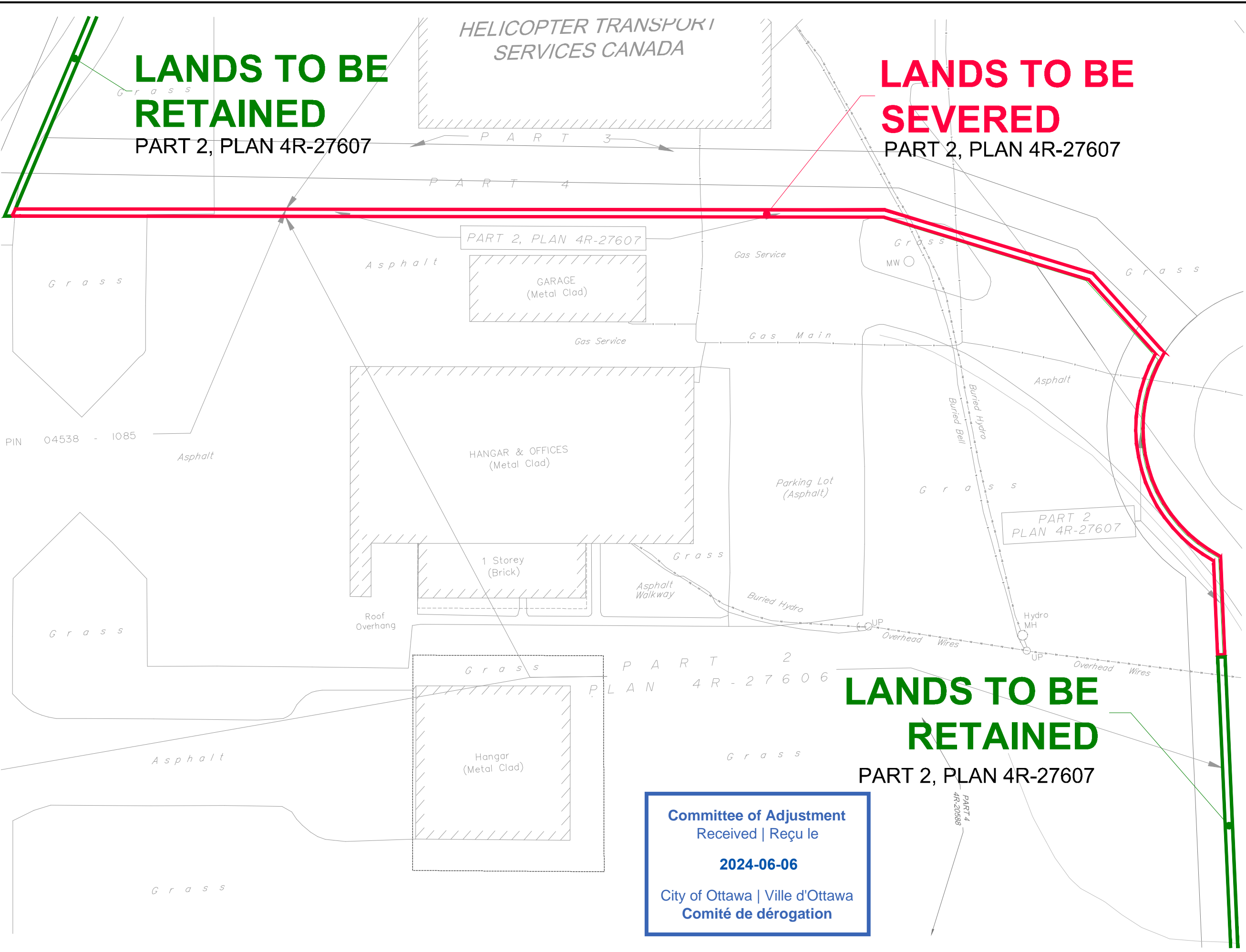
THIS PLAN OF SURVEY RELATES TO AOLS PLAN SUBMISSION FORM NUMBER V-78062

**Fairhall  
Moffatt &  
Woodland**  
ONTARIO LAND SURVEYORS  
Surveying and Land Information Services  
100-600 TERRY FOX DRIVE, KANATA, ONTARIO K2L 4B6  
TEL: (613) 591-2580 FAX: (613) 591-1428  
www.fmw.on.ca

JOB No. AE14001  
E 342487, N 5020552  
REFERENCE No. 140(a)-3 Huntley  
S:\085\AE14000\AE14001\DWG  
rplan-draft.dwg (rr)

May 28, 2024

M:\2002\102085\CAD\Planning\Figure\102085-15-HTC-SEV.dwg, SEV, May 30, 2024 - 3:09pm, wslloss

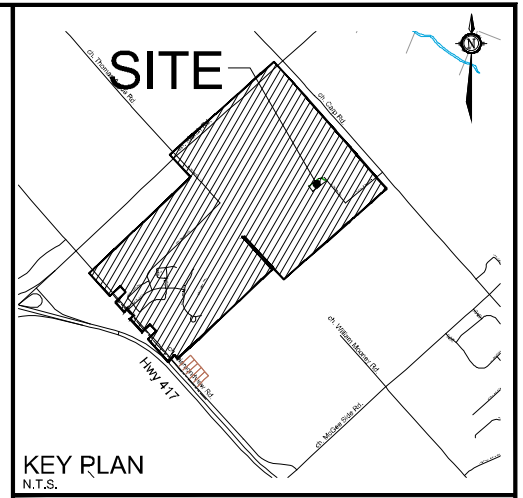


**LANDS TO BE  
RETAINED**  
PART 2, PLAN 4R-27607

**LANDS TO BE  
SEVERED**  
PART 2, PLAN 4R-27607

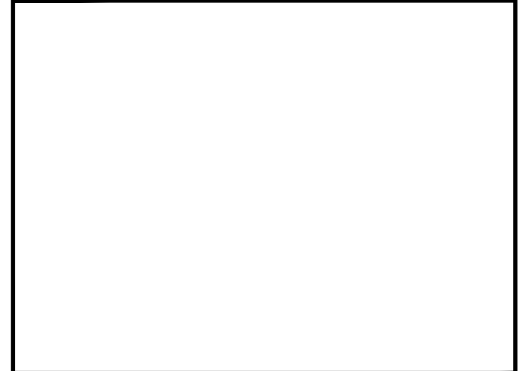
**LANDS TO BE  
RETAINED**  
PART 2, PLAN 4R-27607

**Committee of Adjustment  
Received | Reçu le**  
**2024-06-06**  
City of Ottawa | Ville d'Ottawa  
**Comité de dérogation**



**SEVERANCE  
APPLICATION**  
PART 2, PLAN 4R-27607

PART OF LOT 13 & 14  
CONCESSION 3  
Geographic Township of Huntley  
CITY OF OTTAWA



| No. | REVISION                             | DATE      | BY |
|-----|--------------------------------------|-----------|----|
| 3.  | PREPARED FOR COMMITTEE OF ADJUSTMENT | MAY 31/24 | MV |
| 2.  | ISSUED FOR DISCUSSION                | MAY 10/24 | MV |
| 1.  | ISSUED FOR PRE-CONSULTATION          | NOV 08/23 | MV |

**NOVATECH**  
Engineers, Planners & Landscape Architects  
Suite 200, 240 Michael Cowpland Drive  
Ottawa, Ontario, Canada K2M 1P6  
Telephone: (613) 254-9643  
Facsimile: (613) 254-5867  
Website: www.novatech-eng.com

ISSUED  
**MAY, 2024**

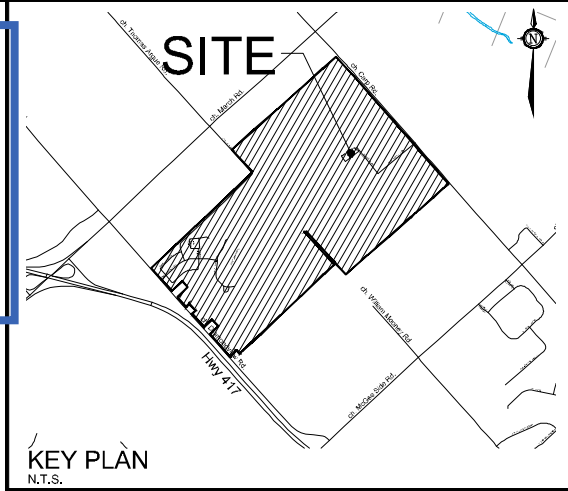
PROJECT No.  
**102085**

DRAWING No.  
**102085-15-HTC-SEV**

## Minor Variance Applications:

- a) To permit an minimum setback of 5.53 metres from a lot line for an accessory building, whereas the by-law requires 12 metres ([Section 208(5), Table 208, Provision b])
- b) To permit an minimum distance of 6.28 metres between buildings on the same lot, whereas the by-law requires 10 metres ([Section 208(5), Table 208, Provision e])
- c) To permit frontage on private streets, whereas the by-law requires that "no person shall develop or otherwise use any lot unless that land abuts an improved public street for a distance of at least 3.0 metres" [Section 59(1)]
- d) To permit frontage on private streets, whereas the by-law requires that "no person shall sever any land unless the land severed and the land retained each abut to a street, in accordance with subsection (1)" [Section 59(2)]

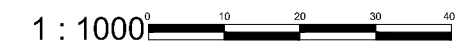
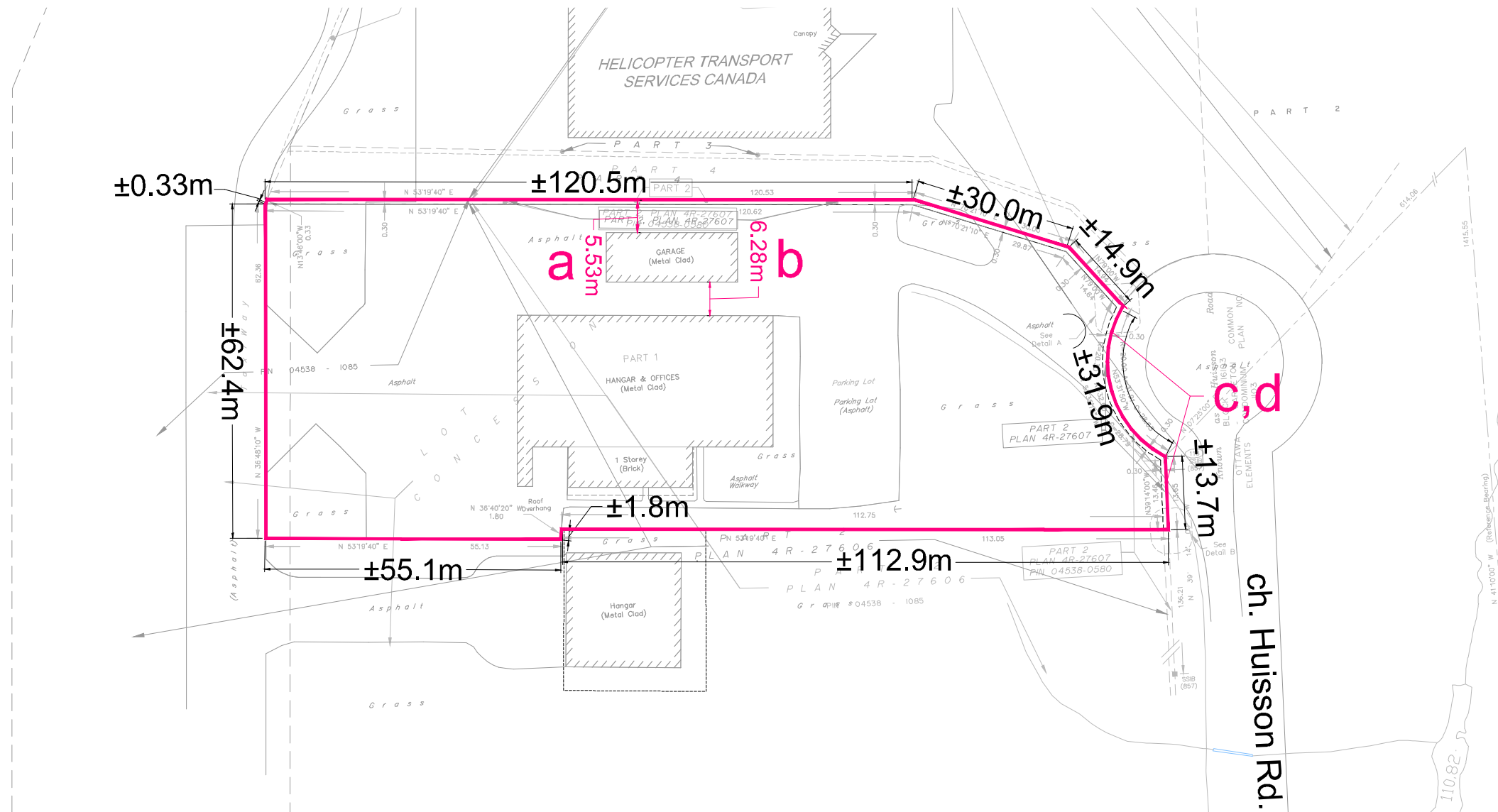
Committee of Adjustment  
Received | Reçu le  
**2024-06-06**  
City of Ottawa | Ville d'Ottawa  
Comité de dérogation



# MINOR VARIANCE APPLICATION

## HELICOPTER TRANSPORT SERVICES CANADA

PART OF LOT 13 & 14  
CONCESSION 3  
Geographic Township of Huntley  
CITY OF OTTAWA



| No. | REVISION                             | DATE      | BY |
|-----|--------------------------------------|-----------|----|
| 1.  | PREPARED FOR COMMITTEE OF ADJUSTMENT | MAY 31/24 | MV |

**NOVATECH**  
Engineers, Planners & Landscape Architects  
Suite 200, 240 Michael Cowpland Drive  
Ottawa, Ontario, Canada K2M 1P6  
Telephone (613) 254-9643  
Facsimile (613) 254-5857  
Website www.novatech-eng.com

ISSUED  
MAY, 2024  
PROJECT No.  
102085  
DRAWING No.  
102085-15-HTC-MV

M:\2002\102085\CAD\Planning\Figure\102085-15-HTC-MV.dwg, MV, Jun 04, 2024 - 9:58am, wslloss

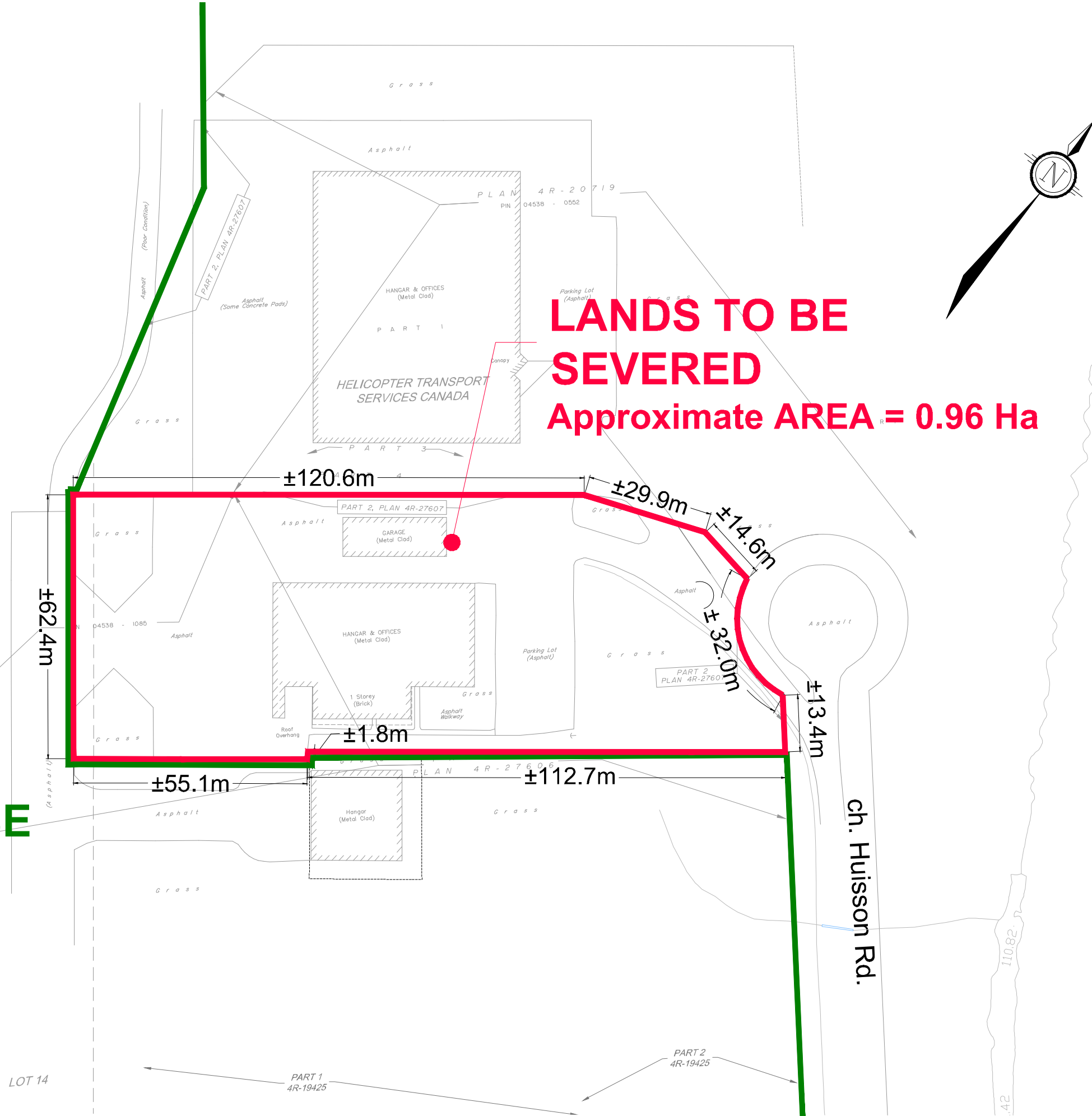
Committee of Adjustment  
Received | Reçu le

2024-06-06

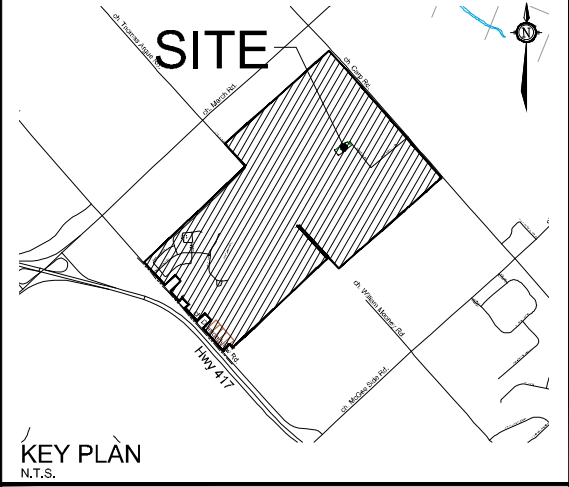
City of Ottawa | Ville d'Ottawa  
Comité de dérogation

M:\2002\102085\CAD\Lot Line Adjustment\CAD\Planning\Figure\102085-15-HTC-SEV.dwg, CONSENT, May 30, 2024 - 3:09pm, wslloss

**LANDS TO BE  
RETAINED**  
Approximate  
AREA= 130 Ha



**LANDS TO BE  
SEVERED**  
Approximate AREA = 0.96 Ha



# CONSENT APPLICATION

HELICOPTER TRANSPORT  
SERVICES CANADA

PART OF LOT 13 & 14  
CONCESSION 3  
Geographic Township of Huntley  
CITY OF OTTAWA

1 : 1000

| No. | REVISION                             | DATE      | BY |
|-----|--------------------------------------|-----------|----|
| 3.  | PREPARED FOR COMMITTEE OF ADJUSTMENT | MAY 31/24 | MV |
| 2.  | ISSUED FOR DISCUSSION                | MAY 10/24 | MV |
| 1.  | ISSUED FOR PRE-CONSULTATION          | NOV 08/23 | MV |

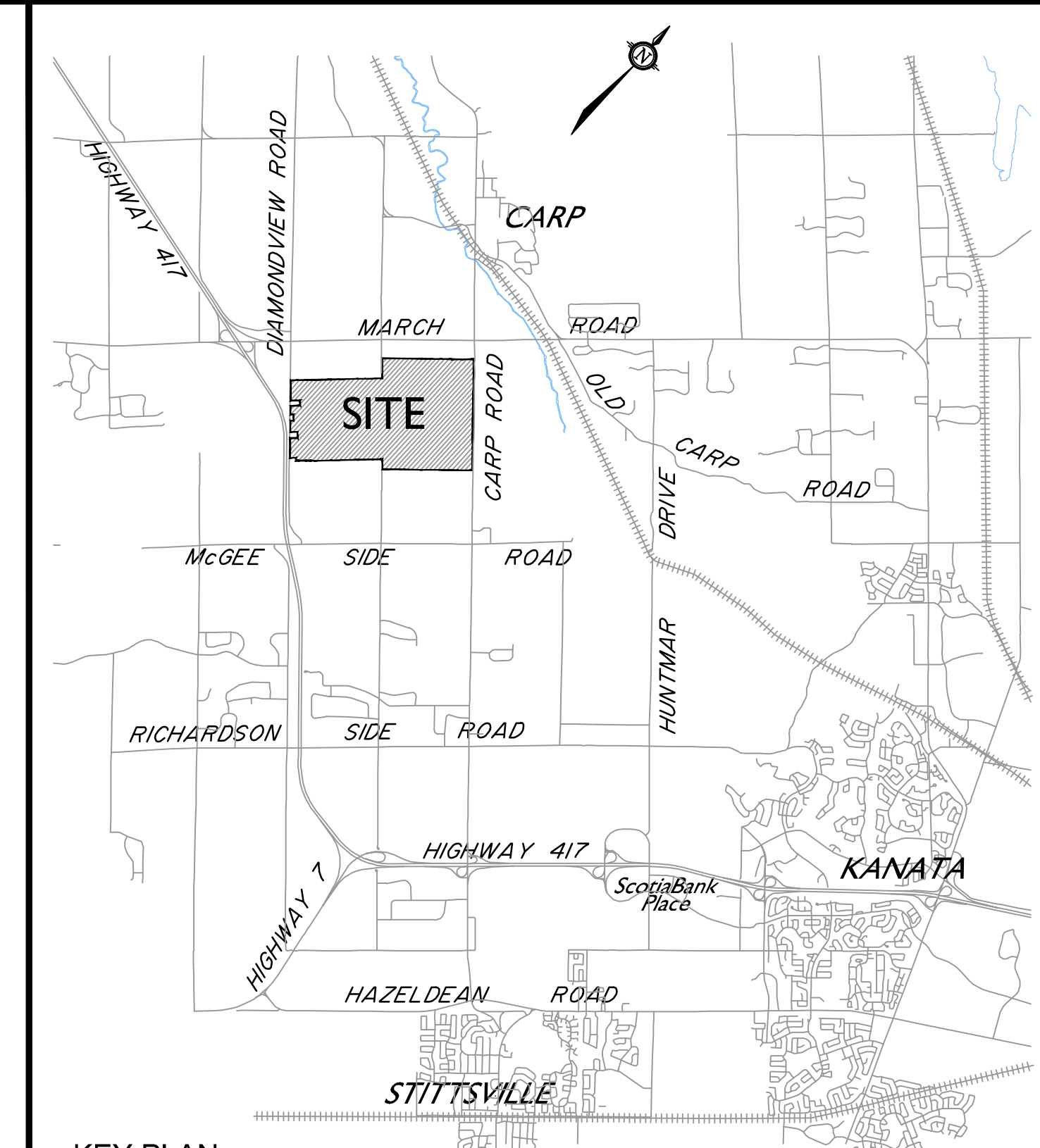
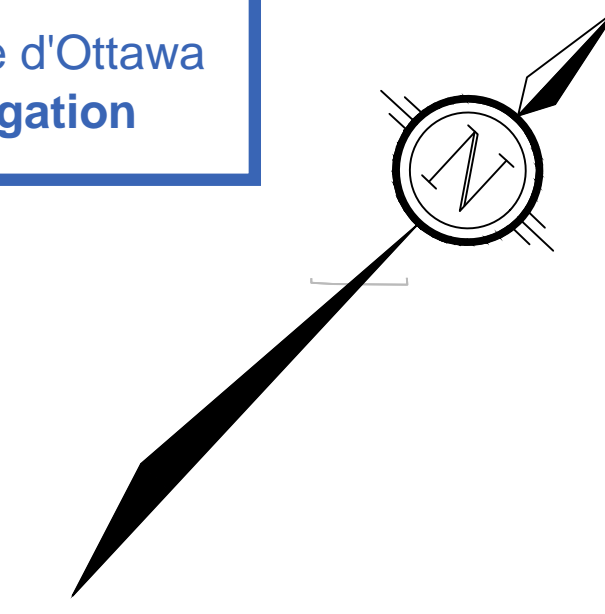
**NOVATECH**  
Engineers, Planners & Landscape Architects  
Suite 200, 240 Michael Cowpland Drive  
Ottawa, Ontario, Canada K2M 1P6  
Telephone (613) 254-9643  
Facsimile (613) 254-5857  
Website www.novatech-eng.com

ISSUED  
MAY, 2024  
PROJECT No.  
102085  
DRAWING No.  
102085-15-HTC-LL

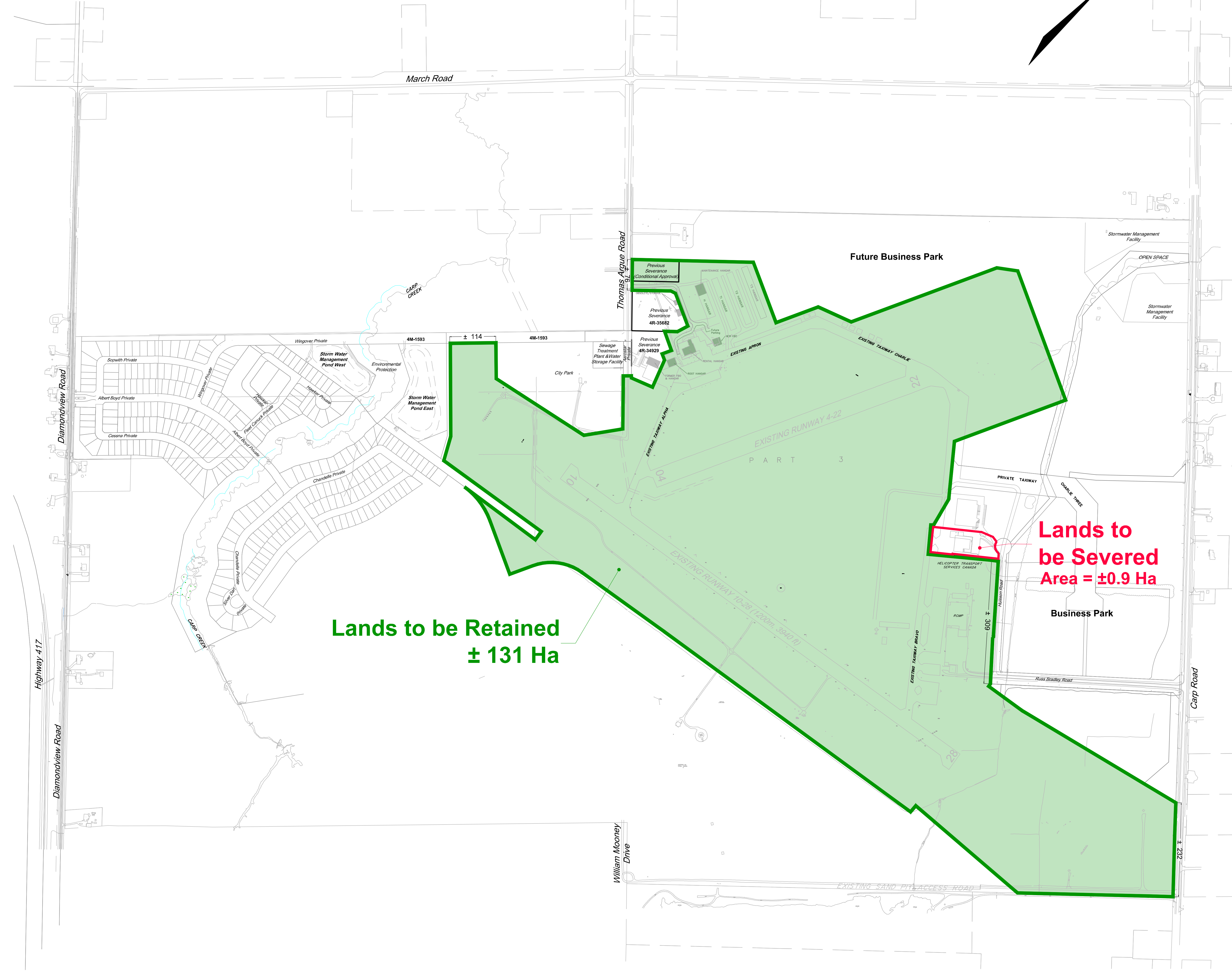
**LEGEND**

- Lands to be Retained
- Lands to be Severed

Committee of Adjustment  
 Received | Reçu le  
**2024-06-06**  
 City of Ottawa | Ville d'Ottawa  
 Comité de dérogation

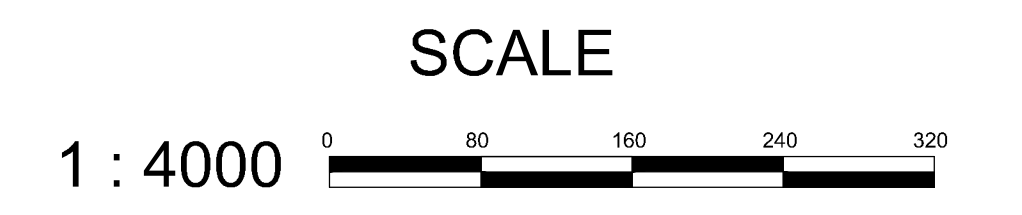


KEY PLAN  
NOT TO SCALE



# WEST CAPITAL AIRPARK

# RETAINED LANDS CORE AIRPORT

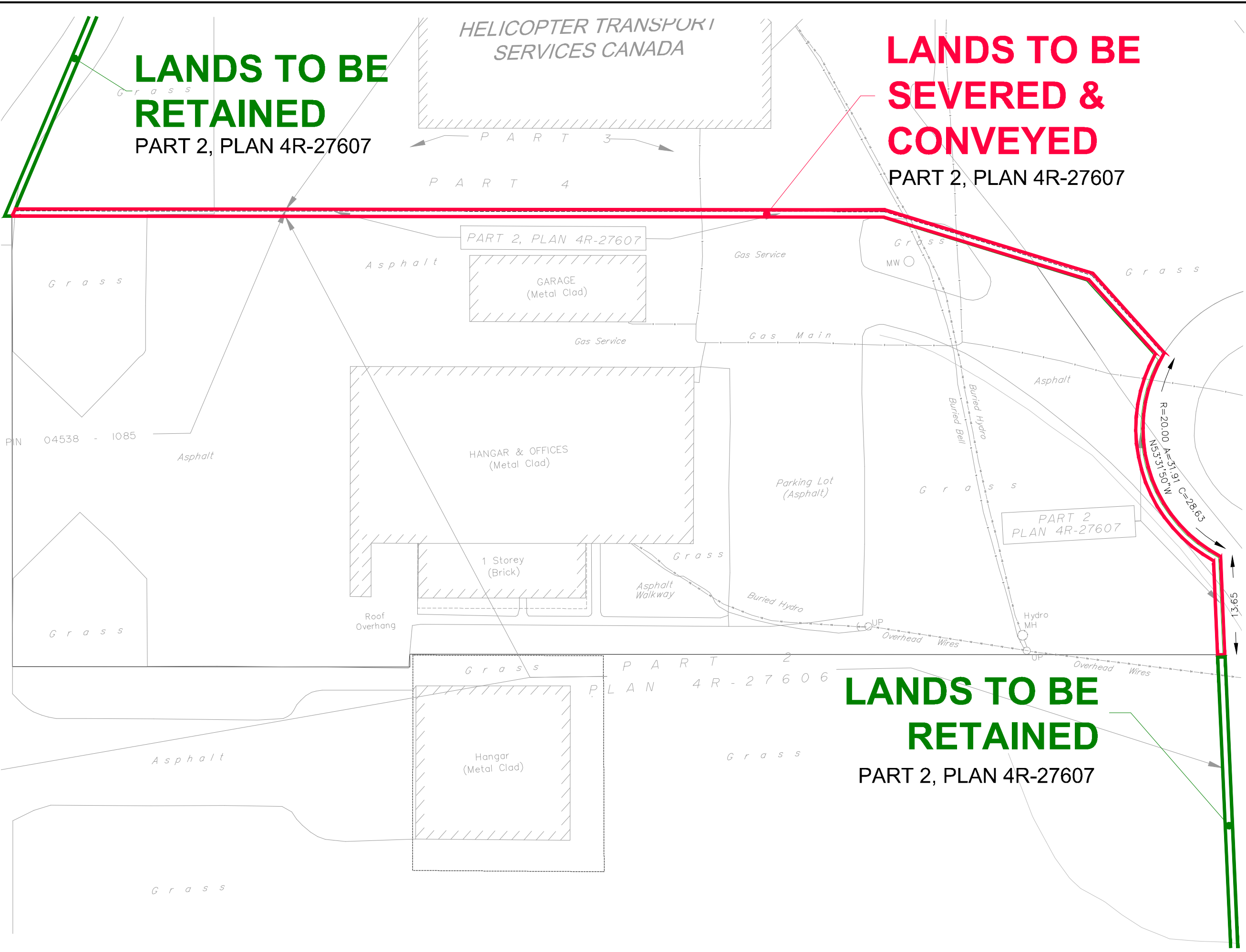


| No. | REVISION                             | DATE      | BY |
|-----|--------------------------------------|-----------|----|
| 2.  | PREPARED FOR COMMITTEE OF ADJUSTMENT | MAY 31/24 | MV |
| 1.  | PREPARED FOR COMMITTEE OF ADJUSTMENT | JAN 24/24 | MV |

|   |  |
|---|--|
| <p style="font-size: 8px;">             Engineers, Planners &amp; Landscape Architects<br/>             Suite 200, 240 Michael Cowland Drive<br/>             Ottawa, Ontario, Canada K2M 1P6<br/>             Telephone: (613) 254-9643<br/>             Facsimile: (613) 254-5867<br/>             Website: www.novatech-eng.com           </p> | DATE<br><b>MAY, 2024</b>                 |
|   | PROJECT No.<br><b>102085</b>             |
|   | DRAWING No.<br><b>102085-CoreAirport</b> |

M:\2024\102085\CAD\Planning\Figures\102085-CoreAirport-SEV\Fig\_CORE May 31, 2024 - 11:38am.wks

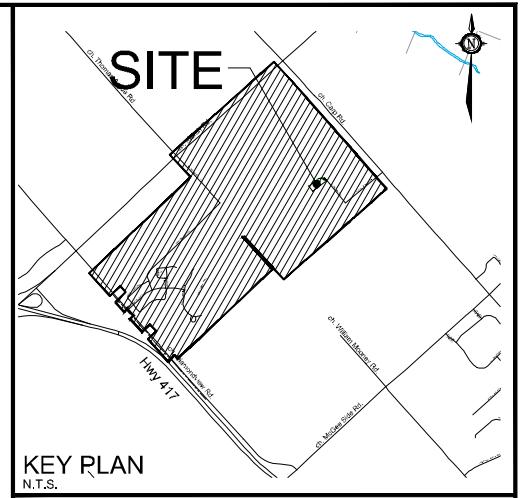
M:\2002\102085\CAD\Lot Line Adjustment\CAD\Planning\Figure\102085-15-HTC-SEV.dwg, LOT LINE, May 31, 2024 - 11:31am, wslloss



**LANDS TO BE  
RETAINED**  
PART 2, PLAN 4R-27607

**LANDS TO BE  
SEVERED &  
CONVEYED**  
PART 2, PLAN 4R-27607

**LANDS TO BE  
RETAINED**  
PART 2, PLAN 4R-27607



**LOT LINE  
ADJUSTMENT  
APPLICATION**  
PART 2, PLAN 4R-27607

PART OF LOT 13 & 14  
CONCESSION 3  
Geographic Township of Huntley  
CITY OF OTTAWA

**Committee of Adjustment  
Received | Reçu le**  
  
**2024-06-25**  
  
City of Ottawa | Ville d'Ottawa  
Comité de dérogation

1 : 500

| No. | REVISION                             | DATE       | BY |
|-----|--------------------------------------|------------|----|
| 4   | PREPARED FOR COMMITTEE OF ADJUSTMENT | JUNE 21/24 | MV |
| 3   | PREPARED FOR COMMITTEE OF ADJUSTMENT | MAY 31/24  | MV |
| 2   | ISSUED FOR DISCUSSION                | MAY 10/24  | MV |
| 1   | ISSUED FOR PRE-CONSULTATION          | NOV 08/23  | MV |

|   |             |                   |
|---|-------------|-------------------|
| <br>Engineers, Planners & Landscape Architects<br>Suite 200, 240 Michael Cowpland Drive<br>Ottawa, Ontario, Canada K2M 1P6<br>Telephone: (613) 254-9643<br>Facsimile: (613) 254-5867<br>Website: www.novatech-eng.com | ISSUED      | MAY, 2024         |
|   | PROJECT No. | 102085            |
|   | DRAWING No. | 102085-15-HTC-FIG |