

Committee of Adjustment
Received | Reçu le
Revised | Modifié le : 2024-07-04
City of Ottawa | Ville d'Ottawa
Comité de dérogation



Property Area City of Ottawa zoning by-law No. 2008-250
 13210(01) sq. m. 131 429 sq. ft.

PROJECT STATISTICS	BUILDINGS	A.B.
RESIDENTIAL USE	21	21
TOTAL SPA AND RESIDENTIAL USE	10 451 m ²	
LOT COVERAGE	3 228 m ²	

UNIT STATISTICS	BUILDINGS	GF	2nd to 6th
1 Bedroom	24	4	20
2 Bedroom	13	1	12
3 Bedroom	35	5	30
4 Bedroom	17	1	16
5 Bedroom	6	1	5
TOTAL	95	12	83

- NOTES GÉNÉRALES / General Notes
- Ces documents d'architecture sont la propriété exclusive de NEUF architectes et ne peuvent être utilisés, reproduits ou copiés sans autorisation écrite préalable. / These architectural documents are the exclusive property of NEUF architectes and cannot be used, copied or reproduced without written pre-authorization.
 - Les dimensions apparentant aux documents doivent être vérifiées par l'entrepreneur avant le début des travaux. / All dimensions which appear on the documents must be verified by the contractor before to start the work.
 - Vous devez aviser l'architecte de toute dimension erronée ou divergente entre ces documents et ceux des autres professionnels. / The architect must be notified of all errors, omissions and discrepancies between these documents and those of the others professionals.
 - Les dimensions sur ces documents doivent être lues et non mesurées. / The dimensions on these documents must be read and not measured.

PLANNIFICATEUR / Planner
FOTEN Planning and Urban Design
 390 Cooper Street, Suite 300, Ottawa, ON K2P 2H7
 T 613 750 5709 foten.com

ARCHITECTURE DE PAYSAGE / Landscape Architect
GJA Inc. Gino, J. Aiello
 110 Dabney Road, Unit 9, Ottawa, ON K2T 0C2
 T 613 288 5100 gja.com

INGÉNIEUR TRANSPORT / Transportation Engineering
PARSONS
 1223 McNeil Avenue, Suite 100, Ottawa, ON K1J 7T2
 T 613 738 4160 parsons.com

CIVIL / Civil
McINTOSH PERRY
 115 Wellington Road #3 Cans, Ottawa, ON K0A 1L0
 T 613 836 2184 mcintoshperry.com

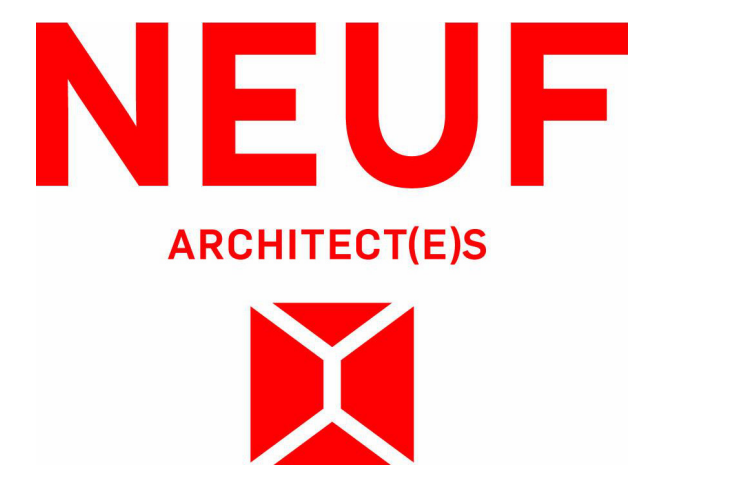
STRUCTURE / Structure
RJC Engineers
 1545 Carling Avenue, Suite 304, Ottawa, ON K1Z 6P9
 T 613 714 1000 rjc.ca

ARCHITECTES / Architect
NEUF architect(e)s
 650 boul. René-Lévesque O. 32e étage, Montréal, QC H3B 1S6
 T 514 847 1117 neuf.ca

INGÉNIEUR MÉCANIQUE / Mechanical Engineering
Building Consultants
 6400 rue Desjardins, Suite 110, Boisbriand, QC J7H 0E8
 T 514 718 6841 building-consultants.ca

INGÉNIEUR ÉLECTRIQUE / Electrical Engineer
Building Consultants
 6400 rue Desjardins, Suite 110, Boisbriand, QC J7H 0E8
 T 514 718 6841 building-consultants.ca

SCÉAU / Seal



CLIENT / Client
SINA
 5000 boul. La Carrière, Suite 1200, Laval, QC H7T 2P5
 T 514 567 7462 sina.ca

COUVRAGE / Project
788 MARCH ROAD RESIDENTIAL
 EMPLACEMENT / Location
OTTAWA, ON 13109

NO.	REVISION	DATE (aa.mm.jj)
1	FOR FOUNDATION PERMIT	2024-06-26
2	ISSUE FOR PERMIT	2024-06-26

DESIGNÉ PAR / Drawn by
N.S.H.
 DATE (aa.mm.jj)
2024-06-28
 TITRE DU DESSIN / Drawing Title
SITE PLAN

VÉRIFIÉ PAR / Checked by
C.I.
 ÉCHELLE / Scale
As indicated

REVISION / Revision
2
 NO. DESSIN / Draw Number
A100



LEGEND

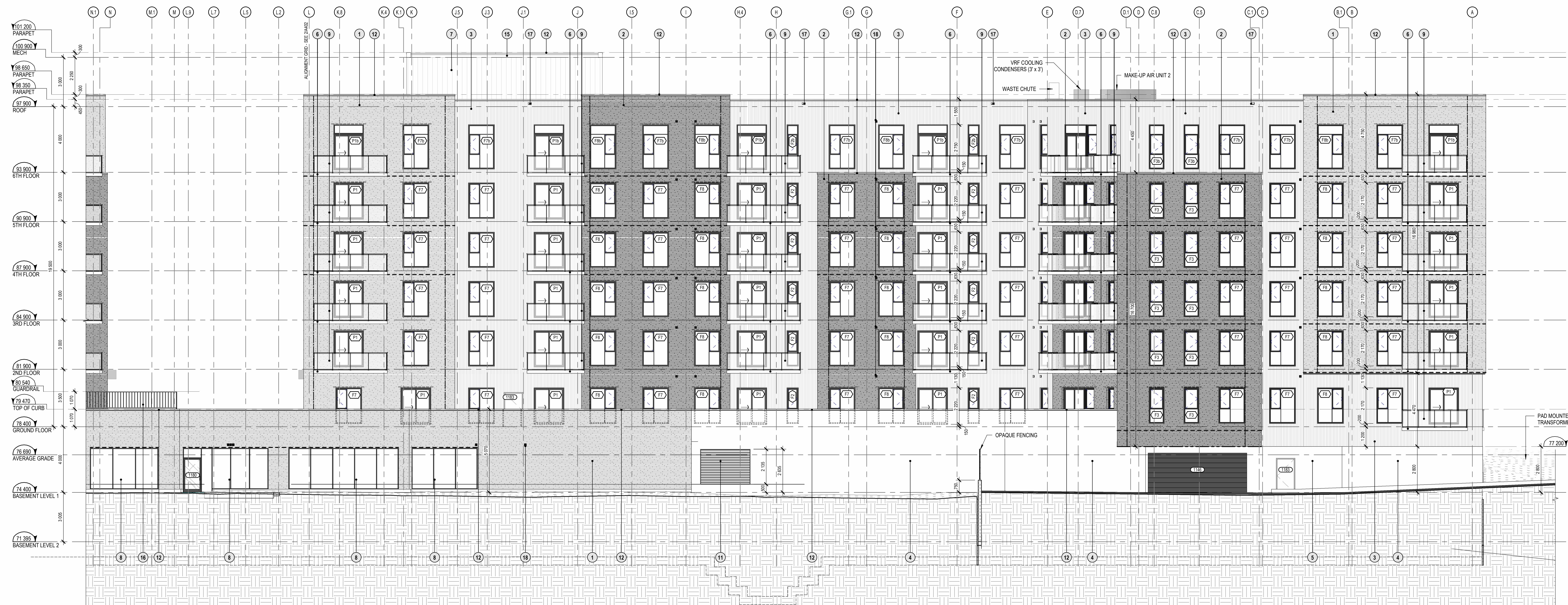
- PROPERTY LINE
- REQUIRED SETBACKS
- UNDERGROUND PARKING EXTEND
- ROAD IN ASPHALT
- PEDESTRIAN PATH
- SIDEWALK
- ADJACENT BUILDINGS
- BUILDING AREA
- SOFT LANDSCAPING TURF. REFER TO LANDSCAPE
- PLANTING BEDS. REFER TO LANDSCAPE
- RIVERWASH STONE. REFER TO LANDSCAPE
- PATIO SLABS
- TRAFFIC DIRECTION
- MECHANICAL EQUIPMENTS
- CAR PARKING REGULAR
- CAR PARKING SMALL
- BARRIER FREE PARKING (TYPE A)
- BARRIER FREE PARKING (TYPE B)
- BIKE PARKING REGULAR
- BIKE PARKING ELEVATION

PLAN DE SITE
 1:200

LEGAL DESCRIPTION:
 This property is legally described as Part of Lot 10, Concession 4, Geographic Township of March, City of Ottawa

TOPOGRAPHICAL INFORMATION:
 Property boundary has been derived from plan prepared by J.D. Barnes Limited. Topographical information has been prepared by McIntosh Perry

Autodesk Docs://13109_788 MARCH ROAD_R24/MAR_R24/MAR_13109_ARC_INT_R24.mxd



NORTH ELEVATION - BUILDING "A"
1:100



SOUTH ELEVATION - BUILDING "A"
1:100

ELEVATION KEYNOTE LEGEND	
1	ARCHITECTURAL MASONRY B/C BRICKWORK - "WALNUT OR MENDOTA GREY"
2	ARCHITECTURAL MASONRY B/C BRICKWORK - "SPALL"
3	STEEL BRUSH M/C METAL, NORWOOD MIN. "BLACK WALNUT"
4	ACRYLIC - LIGHT GREY COLOR
5	ACRYLIC - CHARCOAL COLOR
6	EXPOSED CONCRETE
7	METAL CLADDING PANELS - LIGHT GREY COLOR
8	WINDOW WALL DOUBLE GLASS WITH ALUMINUM PROFILE - BLACK COLOR
9	GLAZING WITH TINTED GLASS WITH ALUMINUM PROFILE - BLACK COLOR
10	WINDOW SCREEN WITH FRIGTED GLASS WITH ALUMINUM PROFILE - BLACK COLOR - 800MM OF HEIGHT
11	CLADDING - COLOR MATCHED TO ADJACENT MATERIAL
12	METAL FLASHING - COLOR MATCHED TO ADJACENT MATERIAL
13	ADJACENT MATERIAL
14	METAL PANEL FOR ENTRANCE CANOPY - BLACK COLOR
15	GALVANIZED STEEL OUTLET
16	GALVANIZED STEEL CHANNEL WITH FINGERES
17	PRE-FINISHED METAL SCOPPER
18	VENT COVER - SEE MECHANICAL DRAWINGS
19	WINDOW SCREEN WITH PERFORATED ALUMINUM - BLACK COLOR

ELEVATION LEGEND	
	EXTERIOR FINISH REFER TO ELEVATION KEYNOTE LEGEND
	WINDOW TYPE REFER TO WINDOW SCHEDULE
	ANODIZED ALUMINUM WALL BOX VENTILATION COORDINATE WITH MECHANICAL ENGINEER DRAWINGS FOR LOCATIONS.
	GALVANIZED STEEL STRUCTURAL STEEL ANGLE LEVELS AND LOCATIONS TO BE COORDINATED WITH THE ARCHITECTURAL DETAILS / SECTIONS, MASONRY COURSING, STEEL SHOP DRAWINGS AND STRUCTURAL ENGINEER DRAWINGS.
	DROPPED GALVANIZED STEEL STRUCTURAL STEEL ANGLE LEVELS AND LOCATIONS TO BE COORDINATED WITH THE ARCHITECTURAL DETAILS / SECTIONS, FLOOR SLAB PLANS, MASONRY COURSING, STEEL SHOP DRAWINGS AND STRUCTURAL ENGINEER DRAWINGS.
	MASONRY EXPANSION JOINT REFER TO PLAN DETAILS

NOTES:
1. EXHAUST VENT LOCATION TO BE VERIFIED AND COORDINATED WITH MECHANICAL ENGINEER DRAWINGS.

NOTES GÉNÉRALES - General Notes

- Ces documents d'architecture sont la propriété exclusive de NEUF architectes et ne peuvent être utilisés, réproduits ou copiés sans autorisation écrite préalable. / These architectural documents are the exclusive property of NEUF architectes and cannot be used, copied or reproduced without written prior authorization.
- Les dimensions apparaissant sur ces documents doivent être vérifiées par l'entrepreneur avant le début des travaux. / All dimensions which appear on these documents must be verified by the contractor before to start the work.
- Veuillez utiliser l'architecture de toute dimension enroulée et non mesurée. / The dimensions on these documents must be read and not measured.
- Les dimensions sur ces documents doivent être lues et non mesurées. / The dimensions on these documents must be read and not measured.

PLANNIFICATEUR: Planner
390 Cooper Street, Suite 300, Ottawa, ON K2P 2H7
T 613 730 5709 lae.com

ARCHITECTURE DE PAYSAGE, Landscape Architect
GJA Inc. Gino, J. Aiello
110 Dababy Road, Unit 9, Ottawa, ON K2T 0C2
T 613 293 6150 gja.com

INGÉNIEUR TRANSPORT Transportation Engineering
PARSONS
1223 Somerset Street, Suite 100, Ottawa, ON K1J 1T2
T 613 836 4160 parsons.com

CIVIL, Civil
McINTOSH PERRY
115 Wellington Road RR 5 Cdn, Ottawa, ON K0A 1L0
T 613 836 2184 mcintoshperry.com

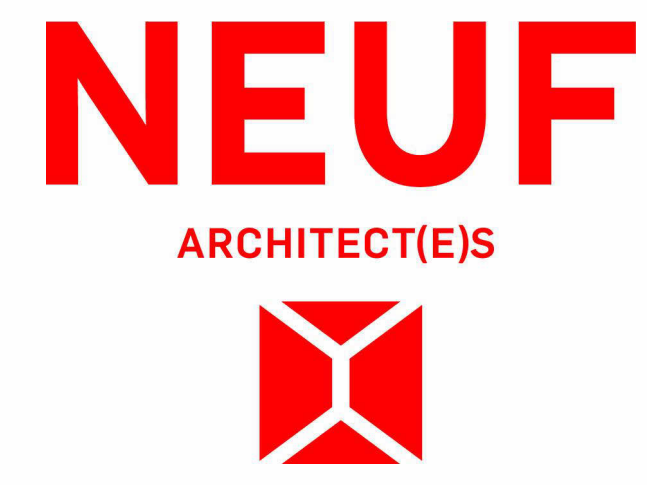
STRUCTURE: Structure
RJC Engineers
1545 Carling Avenue, Suite 304, Ottawa, ON K1Z 8P9
T 613 74 7200 rjc.ca

ARCHITECTES Architect
NEUF architect(e)s
630 boul. René-Lévesque O. 32e étage, Montréal, QC H3B 1S6
T 514 947 1117 neuf.ca

INGÉNIEUR MÉCANIQUE Mechanical Engineer
BUILDING CONSULTANTS
6465 rue Donat-Lesieur, Suite 110, Boisbriand, QC J7H 0E8
T 514 718 6841 building-consultants.ca

INGÉNIEUR ÉLECTRIQUE Electrical Engineer
BUILDING CONSULTANTS
6465 rue Donat-Lesieur, Suite 110, Boisbriand, QC J7H 0E8
T 514 718 6841 building-consultants.ca

SCÉAU / Seal



OUVRAGE Project
788 MARCH ROAD RESIDENTIAL

EMPLACEMENT Location NO PROJET No.
OTTAWA, ON 13109

NO	REVISION	DATE (aa-mm-jj)
B	FOR FOUNDATION PERMIT	2024-04-26

Preliminary
DO NOT USE FOR
CONSTRUCTION

DESSINÉ PAR Drawn by VÉRIFIÉ PAR Checked by
N.S.H/B.R. B.R.
DATE (aa-mm-jj) 2024-06-04
ECHELLE Scale 1 : 100

TITRE DU DESSIN Drawing Title
ELEVATIONS - BUILDING "A"

REVISION Revision NO. DESSIN. Day Number
B A400

2024-06-20

ELEVATION KEYNOTE LEGEND	
1	ARCHITECTURAL MASONRY B.C. BRICKS/CRAFT "VANUIT OR MENDHAM GREY"
2	ARCHITECTURAL MASONRY B.C. BRICKS/CRAFT "VANUIT"
3	STEEL BRUSH METAL, NORWOOD MIN. "BLACK WALNUT"
4	ACRYLIC, LIGHT GREY COLOR
5	ACRYLIC, CHARCOAL COLOR
6	EXPOSED CONCRETE
7	METAL CLADDING PANEL, LIGHT GREY COLOR
8	WINDOW WALL DOUBLE GLASS WITH ALUMINUM PROFILE, BLACK COLOR
9	QUARTZITE, WITH TINTED GLASS WITH ALUMINUM PROFILE, BLACK COLOR
10	PRIVATE SCREEN WITH FRIGTED GLASS WITH ALUMINUM PROFILE, BLACK COLOR, ROOM OF HEIGHT
11	CLADDING, COLOR MATCHED TO ADJACENT MATERIAL
12	METAL FLASHING, COLOR MATCHED TO ADJACENT MATERIAL
13	INTERIOR SPOT
14	METAL PANEL FOR ENTRANCE CANOPY, BLACK COLOR
15	GALVANIZED STEEL CUTLER
16	GALVANIZED STEEL, CHARCOAL WITH POKETS
17	PRE-FINISHED METAL SCOPPER
18	VENT CAPS, SEE MECHANICAL DRAWINGS
19	PRIVATE SCREEN WITH PERFORATED ALUMINUM, BLACK COLOR

ELEVATION LEGEND	
○	EXTERIOR FINISH REFER TO ELEVATION KEYNOTE LEGEND
■	WINDOW TYPE REFER TO WINDOW SCHEDULE
▨	ACCORDED ALUMINUM WALL BOX VENTILATION CLADDING COORDINATE WITH MECHANICAL ENGINEER DRAWINGS FOR LOCATIONS.
101	GALVANIZED STEEL STRUCTURAL STEEL BRUSH, EXTERIOR LOCATIONS TO BE COORDINATED WITH THE ARCHITECTURAL DETAILS / SECTIONS, MASONRY COURSING, STEEL SHOP DRAWINGS AND STRUCTURAL ENGINEER DRAWINGS.
102	DROPPED GALVANIZED STEEL STRUCTURAL STEEL ANGLE LEVELS AND LOCATIONS TO BE COORDINATED WITH THE ARCHITECTURAL DETAILS / SECTIONS, FLOOR FINISH PLANS, MASONRY COURSING, STEEL SHOP DRAWINGS AND STRUCTURAL ENGINEER DRAWINGS.
103	MASONRY EXPANSION JOINT REFER TO VAN DETAILS
NOTES: 1 EXHAUST VENT LOCATION TO BE VERIFIED AND COORDINATED WITH MECHANICAL ENGINEER DRAWINGS.	



NORTH-WEST CORNER ELEVATION -
BUILDING "A"
1:100



SOUTH-EST CORNER ELEVATION -
BUILDING "A"
1:100

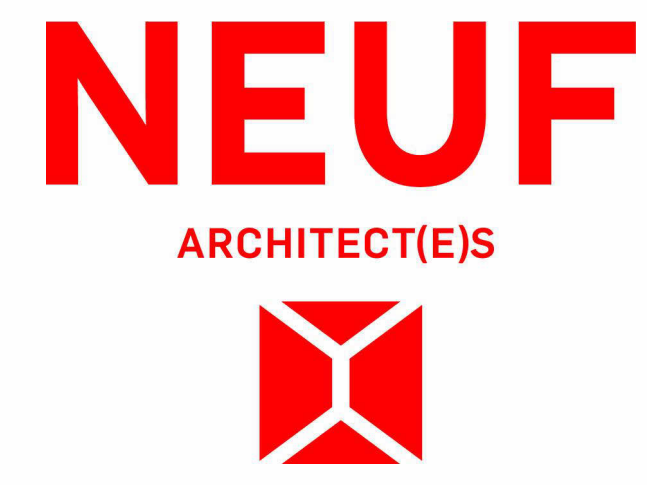


WEST ELEVATION - BUILDING "A"
1:100



EAST ELEVATION - BUILDING "A"
1:100

- NOTES GÉNÉRALES / General Notes
- Ces documents d'architecture sont la propriété exclusive de NEUF architectes et ne peuvent être utilisés, reproduits ou copiés sans autorisation écrite préalable. / These architectural documents are the exclusive property of NEUF architectes and cannot be used, copied or reproduced without written pre-authorization.
 - Les dimensions apparaissant aux documents doivent être vérifiées par l'entrepreneur avant le début des travaux. / All dimensions which appear on the documents must be verified by the contractor before to start the work.
 - Veuillez utiliser l'architecture de toute dimension enrou et/ou dimensions entre ces documents et ceux des autres professionnels. / The architect must be notified of all errors, omissions and discrepancies between these documents and those of the others professionals.
 - Les dimensions sur ces documents doivent être lues et non mesurées. / The dimensions on these documents must be read and not measured.
- PLANNIFICATEUR / Planner
FOTENN Planning and Urban Design
390 Cooper Street, Suite 300, Ottawa, ON K2P 2H7
T 613 730 5700 fotenn.com
- ARCHITECTURE DE PAYSAGE, Landscape Architect
GJA Inc. Gino, J. Aiello
110 Dalrymple Road, Unit 9, Ottawa, ON K2T 0C2
T 613 298 8700 gja.com
- INGÉNIEUR TRANSPORT Transportation Engineering
PARSONS
1223 Somerset Street, Suite 100, Ottawa, ON K1J 1T2
T 613 738 4160 parsons.com
- CIVIL, Civil
McINTOSH PERRY
115 Wellington Road RR 3 City, Ottawa, ON K0A 1L0
T 613 836 2184 mcintoshperry.com
- STRUCTURE / Structure
RJC Engineers
1545 Carling Avenue, Suite 304, Ottawa, ON K1Z 8P9
T 613 714 7000 rjc.ca
- ARCHITECTES / Architect
NEUF architect(e)s
630 boul. René-Lévesque O. 32e étage, Montréal, QC H3B 1S6
T 514 947 1117 neuf.ca
- INGÉNIEUR MÉCANIQUE / Mechanical Engineer
BUILDING CONSULTANTS
6455 rue Dorval-Lesieur, Suite 110, Boisbriand, QC J7H 0E8
T 514 718 6841 building-consultants.ca
- INGÉNIEUR ÉLECTRIQUE / Electrical Engineer
BUILDING CONSULTANTS
6455 rue Dorval-Lesieur, Suite 110, Boisbriand, QC J7H 0E8
T 514 718 6841 building-consultants.ca
- SCÉAU / Seal



CLIENT / Client
SINA
3000 boul. La Capitale, Suite 1200, Laval, QC H7T 2P5
T 514 962 7424 sina.ca

OUVRAGE / Project
788 MARCH ROAD RESIDENTIAL

EMPLACEMENT / Location
OTTAWA, ON

NO PROJET No.
13109

NO REVISION DATE (aa-mm-jj)
B FOR FOUNDATION PERMIT 2024-06-20

DESSINÉ PAR / Drawn by
N.S.H/B.R.

VÉRIFIÉ PAR / Checked by
B.R.

DATE (aa-mm-jj)
2024-06-04

ECHELLE / Scale
1 : 100

TITRE DU DESSIN / Drawing Title
ELEVATIONS - BUILDING "A"

REVISION / Revision	NO. DESSIN / Drawing Number
B	A401



NORTH ELEVATION - BUILDING "B"
1:100



A402 SOUTH ELEVATION - BUILDING "B"
1:100

ELEVATION KEYNOTE LEGEND	
1	ARCHITECTURAL MASONRY & G.C. MASONRY: "WALNUT OR MENDOTA GREY"
2	ARCHITECTURAL MASONRY: B.C. MASONRY: "SPIN"
3	STEEL BRUSH METAL: NORWOOD MIN. "BLACK WALNUT"
4	ACRYLIC: LIGHT GREY COLOR
5	ACRYLIC: CHARCOAL COLOR
6	EXPOSED CONCRETE
7	METAL CLADDING PANEL: LIGHT GREY COLOR
8	WINDOW WALL DOUBLE GLASS WITH ALUMINUM PROFILE: BLACK COLOR
9	GLAZING WITH TINTED GLASS WITH ALUMINUM PROFILE: BLACK COLOR
10	FRONT SCREEN WITH FRIGTED GLASS WITH ALUMINUM PROFILE: BLACK COLOR: ROOM OF HEIGHT
11	SCREENS: COLOR MATCHED TO ADJACENT MATERIAL
12	METAL FLASHING: COLOR MATCHED TO ADJACENT MATERIAL
13	ADJACENT MATERIAL
14	METAL PANEL FOR ENTRANCE CANOPY: BLACK COLOR
15	ALUMINUM PANEL FOR ENTRANCE CANOPY: BLACK COLOR
16	PRE-FINISHED METAL SCOFFER
17	VENT CLADDING: SEE MECHANICAL DRAWINGS
18	FRONT SCREEN WITH FRIGTED GLASS WITH ALUMINUM PROFILE: BLACK COLOR

ELEVATION LEGEND	
○	EXTERIOR FINISH REFER TO ELEVATION KEYNOTE LEGEND
□	INDOOR TYPE REFER TO WINDOW SCHEDULE
▨	ANODIZED ALUMINUM WALL BOX VENTILATION LOUVER: COORDINATE WITH MECHANICAL ENGINEER DRAWINGS FOR LOCATION.
104	GALVANIZED STEEL STRUCTURAL SHELF ANGLE: LEVELS AND LOCATIONS TO BE COORDINATED WITH THE ARCHITECTURAL DETAILS/ SECTION, MASONRY COURSE, STEEL SHOP DRAWINGS AND STRUCTURAL ENGINEER DRAWINGS.
105	PROFILING GALVANIZED STEEL STRUCTURAL SHELF ANGLE: LEVELS AND LOCATIONS TO BE COORDINATED WITH THE ARCHITECTURAL DETAILS/ SECTION, FLOOR PLATE PLANS, MASONRY COURSE, STEEL SHOP DRAWINGS AND STRUCTURAL ENGINEER DRAWINGS.
106	MASONRY EXPANSION JOINT REFER TO PLAN DETAILS

NOTES:
1 EXHAUST VENT LOCATION TO BE VERIFIED AND
COORDINATED WITH MECHANICAL ENGINEER DRAWINGS.

NOTES GÉNÉRALES: General Notes

- Ces documents d'architecture sont la propriété exclusive de NEUF architectes et ne peuvent être utilisés, reproduits ou copiés sans autorisation écrite préalable. / These architectural documents are the exclusive property of NEUF architectes and cannot be used, copied or reproduced without written pre-authorization.
- Les dimensions apparaissant aux documents doivent être vérifiées par l'entrepreneur avant le début des travaux. / All dimensions which appear on the documents must be verified by the contractor before to start the work.
- Veuillez aviser l'architecte de toute dimension en sur ou en dessous des documents de ceux des autres professionnels. / The architect must be notified of all errors, omissions and discrepancies between these documents and those of the others professionals.
- Les dimensions sur ces documents doivent être lues et non mesurées. / The dimensions on these documents must be read and not measured.

PLANNIFICATEUR: Planner
FOTENN Planning and Urban Design
390 Cooper Street, Suite 300, Ottawa, ON K2P 2H7
T 613 730 5709 fotenn.com

ARCHITECTURE DE PAYSAGE: Landscape Architect
GJA Inc. Gino, J. Aiello
110 Dababy Road, Unit 9, Ottawa, ON K2T 0C2
T 613 293 8700 gja.com

INGÉNIEUR TRANSPORT: Transportation Engineering
PARSONS
1225 Somerset Street, Suite 100, Ottawa, ON K1J 1T2
T 613 836 4160 parsons.com

CIVIL: Civil
McINTOSH PERRY
115 Wellington Road RR 3 Cdn, Ottawa, ON K0A 1L0
T 613 836 2184 mcintoshperry.com

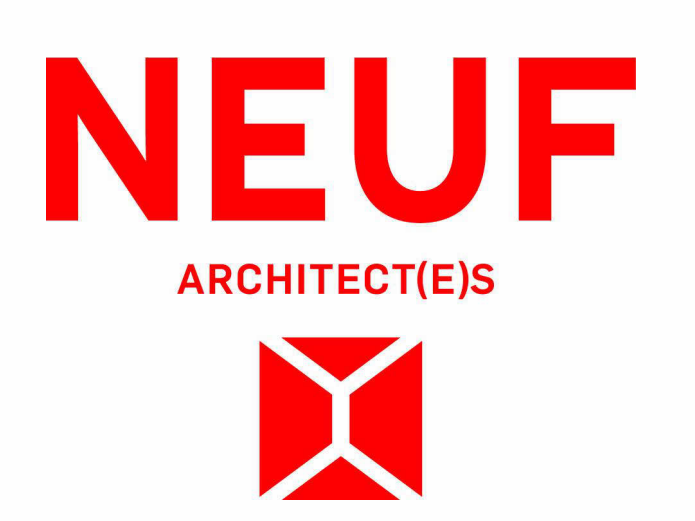
STRUCTURE: Structure
RJC Engineers
1545 Carling Avenue, Suite 304, Ottawa, ON K1Z 8P9
T 613 714 7200 rjc.ca

ARCHITECTES: Architect
NEUF architect(e)s
630 boul. René-Lévesque O. 32e étage, Montréal, QC H3B 1S6
T 514 847 1117 neuf.ca

INGÉNIEUR MÉCANIQUE: Mechanical Engineer
BUILDing Consultants
6455 rue Dorval-Lesieur, Suite 110, Boisbriand, QC J7H 0E8
T 514 718 6841 building-consultants.ca

INGÉNIEUR ÉLECTRIQUE: Electrical Engineer
BUILDing Consultants
6455 rue Dorval-Lesieur, Suite 110, Boisbriand, QC J7H 0E8
T 514 718 6841 building-consultants.ca

SCÉAU / Seal



CLIENT: Client
788 MARCH ROAD RESIDENTIAL

EMPLACEMENT: Location
OTTAWA, ON

NO PROJET: No.
13109

NO REVISION: DATE (aa-mm-jj)
B FOR FOUNDATION PERMIT: 2024-04-26

DESSINÉ PAR: Drawn by
N.S.H/B.R.

VÉRIFIÉ PAR: Checked by
B.R.

DATE (aa-mm-jj): 2024-06-04
ÉCHELLE: Scale: 1:100

TITRE DU DESSIN: Drawing Title
ELEVATIONS - BUILDING "B"

REVISION: Revision
B

NO. DESSIN: Draw Number
A402

2024-06-20



ELEVATION KEYNOTE LEGEND	
NOTE	DESCRIPTION
1	ARCHITECTURAL MASONRY B.C. BRICK/CRAFT "SPAL"
2	ARCHITECTURAL MASONRY B.C. BRICK/CRAFT "SPAL"
3	STEEL STRIP B.C. METAL NORWOOD MIN. "BLACK WALNUT"
4	ACRYLIC LIGHT GREY COLOR
5	ACRYLIC CHARCOAL COLOR
6	EXPOSED CONCRETE
7	METAL CLADDING PANEL LIGHT GREY COLOR
8	WINDOW WALL DOUBLE GLASS WITH ALUMINUM PROFILE - BLACK COLOR
9	QUADRANT WITH TAMPED GLASS WITH ALUMINUM PROFILE - BLACK COLOR
10	FRONT SCREEN WITH FRICATED GLASS WITH ALUMINUM PROFILE - BLACK COLOR - 800MM OF HEIGHT
11	CLADDING - COLOR MATCHED TO ADJACENT MATERIAL
12	METAL FLASHING - COLOR MATCHED TO ADJACENT MATERIAL
13	ADJACENT MATERIAL
14	METAL PANEL FOR ENTRANCE CANOPY - BLACK COLOR
15	GAULANIZED STEEL CLUTTER
16	GAULANIZED STEEL QUADRANT WITH POINTS
17	PRE-FINISHED METAL SCOPPER
18	VENT CLADDING SEE MECHANICAL DRAWINGS
19	FRONT SCREEN WITH FRICATED GLASS WITH ALUMINUM PROFILE - BLACK COLOR

ELEVATION LEGEND	
○	EXTERIOR FINISH REFER TO ELEVATION KEYNOTE LEGEND
□	WINDOW TYPE REFER TO WINDOW SCHEDULE
▨	ANODIZED ALUMINUM WALL BOX VENTILATION LOUVER. COORDINATE WITH MECHANICAL ENGINEER DRAWINGS FOR LOCATION.
---	GAULANIZED STEEL STRUCTURAL SHELF ANGLE. LEVELS AND LOCATIONS TO BE COORDINATED WITH THE STRUCTURAL DETAILS/ SECTIONS, MASONRY COURSE, STEEL SHOP DRAWINGS AND STRUCTURAL ENGINEER DRAWINGS.
---	PROFILER GAULANIZED STEEL STRUCTURAL SHELF ANGLE. LEVELS AND LOCATIONS TO BE COORDINATED WITH THE ARCHITECTURAL DETAILS/ SECTIONS, FLOOR PLATE PLANS, MASONRY COURSE, STEEL SHOP DRAWINGS AND STRUCTURAL ENGINEER DRAWINGS.
---	MASONRY EXPANSION JOINT

NOTES:
1 EXHAUST VENT LOCATION TO BE VERIFIED AND
COORDINATED WITH MECHANICAL ENGINEER DRAWINGS.

NOTES GÉNÉRALES - General Notes

- Ces documents d'architecture sont la propriété exclusive de NEUF architectes et ne peuvent être réutilisés, reproduits ou copiés sans autorisation écrite préalable. / These architectural documents are the exclusive property of NEUF architectes and cannot be used, copied or reproduced without written pre-authorization.
- Les dimensions apparaissant sur ces documents doivent être vérifiées par l'entrepreneur avant le début des travaux. / All dimensions which appear on these documents must be verified by the contractor before to start the work.
- Veuillez utiliser l'architecture de toute dimension enrou et/ou dimensions sur ces documents et ceux des autres professionnels. / The architect must be notified of all errors, omissions and discrepancies between these documents and those of the others professionals.
- Les dimensions sur ces documents doivent être lues et non mesurées. / The dimensions on these documents must be read and not measured.

PLANNIFICATEUR - Planner
FOTENN Planning and Urban Design
390 Cooper Street, Suite 300, Ottawa, ON K2P 2H7
T 613 730 5709 fotenn.com

ARCHITECTURE DE PAYSAGE - Landscape Architect
GJA Inc. Gino, J. Aiello
110 Dabury Road, Unit 9, Ottawa, ON K2T 0C2
T 613 293 8700 gja.com

INGÉNIEUR TRANSPORT - Transportation Engineering
PARSONS
1225 Somerset Street, Suite 100, Ottawa, ON K1J 1T2
T 613 738 4160 parsons.com

CIVIL - Civil
McINTOSH PERRY
115 Wellington Road RR 3 Cdn, Ottawa, ON K0A 1L0
T 613 836 2184 mcintoshperry.com

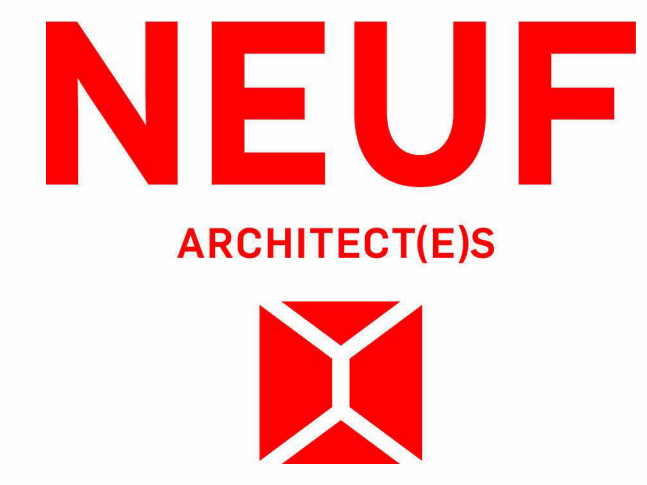
STRUCTURE - Structure
RJC Engineers
1545 Carling Avenue, Suite 304, Ottawa, ON K1Z 8P9
T 613 714 7200 rjc.ca

ARCHITECTES - Architect
NEUF architect(e)s
630 boul. René-Lévesque O. 32e étage, Montréal, QC H3B 1S6
T 514 847 1117 neuf.ca

INGÉNIEUR MÉCANIQUE - Mechanical Engineer
BUILDING CONSULTANTS
6455 rue Dorval-Leslie, Suite 110, Boisbriand, QC J7H 0E8
T 514 718 6841 building-consultants.ca

INGÉNIEUR ÉLECTRIQUE - Electrical Engineer
BUILDING CONSULTANTS
6455 rue Dorval-Leslie, Suite 110, Boisbriand, QC J7H 0E8
T 514 718 6841 building-consultants.ca

SCAU / Seal



OUVRAGE - Project
788 MARCH ROAD RESIDENTIAL

EMPLACEMENT - Location
OTTAWA, ON

NO PROJET No.
13109

NO	REVISION	DATE (aa-mm-jj)
B	FOR FOUNDATION PERMIT	2024-04-26

Preliminary
DO NOT USE FOR
CONSTRUCTION

DESSINÉ PAR - Drawn by
N.S.H/B.R.

VÉRIFIÉ PAR - Checked by
B.R.

DATE (aa-mm-jj)
2024-06-04

ÉCHELLE - Scale
1 : 100

TITRE DU DESSIN - Drawing Title
ELEVATIONS - BUILDING "B"

REVISION - Revision
B

NO. DESSIN - Draw Number
A403

Committee of Adjustment
Received | Reçu le
2024-06-20
City of Ottawa | Ville d'Ottawa
Comité de dérogation

ELEVATION KEYNOTE LEGEND	
NOTE	DESCRIPTION
1	ARCHITECTURAL MASONRY BLOCK APPROXIMATE "WALNUT OR MIDNIGHT GREY"
2	ARCHITECTURAL MASONRY BLOCK APPROXIMATE "OVAL"
3	STEEL SIDING METAL SIDING/DOOD METAL "BLACK WALNUT"
4	ACRYLIC LIGHT GREY COLOR
5	ACRYLIC CHARCOAL COLOR
6	EXPOSED CONCRETE
7	METAL CLADDING PANEL LIGHT GREY COLOR
8	WINDOW WALL DOUBLE GLASS WITH ALUMINUM PROFILE - BLACK COLOR
9	QUADRANT WITH TEMPERED GLASS WITH ALUMINUM PROFILE - BLACK COLOR
10	PRIVACY SCREEN WITH FRIGED GLASS WITH ALUMINUM PROFILE - BLACK COLOR, BOTTOM OF HEIGHT
11	LOWERS COLOR MATCHED TO ADJACENT MATERIAL
12	METAL FLASHING COLOR MATCHED TO ADJACENT MATERIAL
13	BALUNATED SPOUT
14	METAL PANEL FOR RAINWATER CANOPY - BLACK COLOR
15	ADVANCED STEEL GUTTER
16	ADVANCED STEEL GUARDRAIL WITH PICKETS
17	PREPARED METAL SCUPPER
18	VENT COVERS SEE MECHANICAL DRAWINGS
19	PRIVACY SCREEN WITH FRIGED GLASS WITH ALUMINUM - BLACK COLOR

NOTES GÉNÉRALES: General Notes
1. Ces documents d'architecture sont la propriété exclusive de NEUF architect(e)s et ne peuvent être utilisés, réproduits ou copiés sans autorisation écrite préalable. / These architectural documents are the exclusive property of NEUF architect(e)s and cannot be used, copied or reproduced without written pre-authorization.
2. Les dimensions apparaissant aux documents doivent être vérifiées par l'entrepreneur avant le début des travaux. / All dimensions which appear on the documents must be verified by the contractor before to start the work.
3. Veuillez noter l'architecte de toute dimension en mm et/ou en mètres. / The architect must be notified of all errors, omissions and discrepancies between these documents and those of the other professionals.
4. Les dimensions sur ces documents doivent être lues et non mesurées. / The dimensions on these documents must be read and not measured.

PLANIFICATEUR: Planner
FOTENI Planning and Urban Design
390 Cooper Street, Suite 300, Ottawa, ON K2P 2H7
T 613 730 5709 foteni.com

ARCHITECTURE DE PAYSAGE: Landscape Architect
GJA Inc. Gino, J. Aiello
110 Dabney Road, Unit 9, Ottawa, ON K2T 0C2
T 613 298 5700 gja.com

INGÉNIEURIE TRANSPORT: Transportation Engineering
PARSONS
1225 Somerset Street, Suite 100, Ottawa, ON K1J 1T2
T 613 838 4160 parsons.com

CIVIL: Civil
McINTOSH PERRY
115 Wellington Road RR 3, Carp, Ottawa, ON K0A 1L0
T 613 836 2184 mcintoshperry.com

STRUCTURE: Structure
RJC Engineers
1545 Carling Avenue, Suite 304, Ottawa, ON K1Z 8P9
T 613 714 7200 rjc.ca

ARCHITECTES: Architect
NEUF architect(e)s
630 boul. René-Lévesque O. 32e étage, Montréal, QC H3B 1S6
T 514 947 1117 neuf.ca

INGÉNIEURIE MÉCANIQUE: Mechanical Engineer
BUILDING CONSULTANTS
6455 rue Dorval-Leslie, Suite 110, Boisbriand, QC J7H 0E8
T 514 718 6841 building-consultants.ca

INGÉNIEURIE ÉLECTRIQUE: Electrical Engineer
BUILDING CONSULTANTS
6455 rue Dorval-Leslie, Suite 110, Boisbriand, QC J7H 0E8
T 514 718 6841 building-consultants.ca

SCEAU / Seal



NORTH ELEVATION
1:150



EAST ELEVATION
1:150



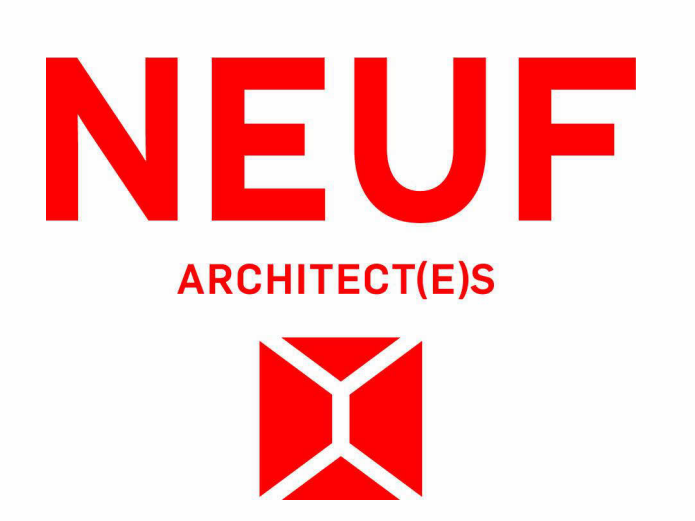
WEST ELEVATION
1:150



SOUTH WEST ELEVATION
1:150



SOUTH ELEVATION
1:150



CLIENT: Client
788 MARCH ROAD RESIDENTIAL
OTTAWA, ON
NO. PROJET No. 13109

NO.	REVISION	DATE (aa-mm-jj)
1	ISSUED FOR COORDINATION	2018-07-19
2	ISSUED FOR SITE PLAN CONTROL	2018-08-15
4	FOR SITE PLAN CONTROL	2018-12-19
5	ISSUE FOR PERMITS VARIANCE	2019-12-28

Preliminary
DO NOT USE FOR CONSTRUCTION

DESSINÉ PAR: Drawn by
M.S. / E.C.
DATE (aa-mm-jj):
2024-06-04

VÉRIFIÉ PAR: Checked by
A.C.
ÉCHELLE: Scale
1 : 150

TITRE DU DESSIN: Drawing Title
COLORED ELEVATIONS

REVISION: Revision
5

NO. DESSIN: Draw Number
A450

Committee of Adjustment
Received | Reçu le
2024-06-20
City of Ottawa | Ville d'Ottawa
Comité de dérogation



ENTRANCE BUILDING "A" ELEVATION
1:150



ENTRANCE BUILDING "B" ELEVATION
1:150



COURTYARD BUILDING "B" ELEVATION
1:150

OVERALL COURTYARD ELEVATION
1:150

COURTYARD BUILDING "A" CORNER ELEVATION
1:150

COURTYARD BUILDING "A" ELEVATION
1:150

NOTES GÉNÉRALES / General Notes

- Ces documents d'architecture sont la propriété exclusive de NEUF architectes et ne peuvent être utilisés, reproduits ou copiés sans autorisation écrite préalable. / These architectural documents are the exclusive property of NEUF architectes and cannot be used, copied or reproduced without written pre-authorization.
- Les dimensions apparaissant aux documents doivent être vérifiées par l'entrepreneur avant le début des travaux. / All dimensions which appear on the documents must be verified by the contractor before to start the work.
- Veuillez aviser l'architecte de toute dimension enrou divergences entre ces documents et ceux des autres professionnels. / The architect must be notified of all errors, omissions and discrepancies between these documents and those of the others professionals.
- Les dimensions sur ces documents doivent être lues et non mesurées. / The dimensions on these documents must be read and not measured.

PLANIFICATEUR / Planner
FOTENN Planning and Urban Design
390 Cooper Street, Suite 300, Ottawa, ON K2P 2H7
T 613 730 5709 fotenn.com

ARCHITECTURE DE PAYSAGE / Landscape Architect
GJA Inc. Gino, J. Aiello
110 Dababy Road, Unit 9, Ottawa, ON K2T 0C2
T 613 280 8100 gja.com

INGÉNIEUR TRANSPORT / Transportation Engineering
PARSONS
1223 Somerset Street, Suite 100, Ottawa, ON K1J 1T2
T 613 738 4160 parsons.com

CIVIL / Civil
McINTOSH PERRY
115 Wellington Road RR 3 Corp., Ottawa, ON K0A 1L0
T 613 836 2184 mcintoshperry.com

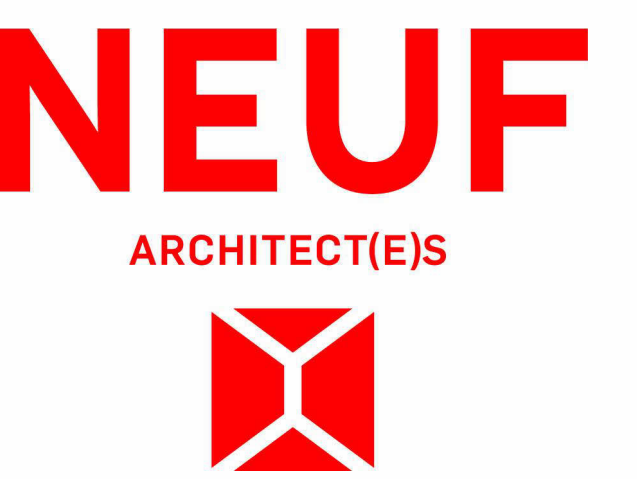
STRUCTURE / Structure
RJC Engineers
1545 Carling Avenue, Suite 304, Ottawa, ON K1Z 8P9
T 613 714 7000 rjc.ca

ARCHITECTES / Architect
NEUF architect(e)s
630 boul. René-Lévesque O. 32e étage, Montréal, QC H3B 1S6
T 514 847 1117 neuf.ca

INGÉNIEUR MÉCANIQUE / Mechanical Engineer
BUILDing Consultants
6455 rue Dorval-Lesieur, Suite 110, Boisbriand, QC J7H 0E8
T 514 718 6841 building-consultants.ca

INGÉNIEUR ÉLECTRIQUE / Electrical Engineer
BUILDing Consultants
6455 rue Dorval-Lesieur, Suite 110, Boisbriand, QC J7H 0E8
T 514 718 6841 building-consultants.ca

SCÉAU / Seal



CLIENT / Client
SINA
3000 boul. La Capitale, Suite 1200, Laval, QC H7T 2P5
T 514 962 7402 sina.ca

OUVRAGE / Project
788 MARCH ROAD RESIDENTIAL

EMPLACEMENT / Location
OTTAWA, ON

NO. REVISION / NO. REVISION
DATE (aa-mm-jj) / DATE (aa-mm-jj)

DESSINÉ PAR / Drawn by
Author

VÉRIFIÉ PAR / Checked by
Checker

DATE (aa-mm-jj) / DATE (aa-mm-jj)
2024-06-04

TITRE DU DESSIN / Drawing Title
COLORED ELEVATIONS OF COURTYARD

NO. DESSIN / Drawing Number
A451

Committee of Adjustment
Received | Reçu le

2024-06-20

City of Ottawa | Ville d'Ottawa
Comité de dérogation

NOTES GÉNÉRALES / General Notes

- Ces documents d'architecture sont la propriété exclusive de NEUF architect(e)s et ne peuvent être utilisés, reproduits ou copiés sans autorisation écrite préalable. / These architectural documents are the exclusive property of NEUF architect(e)s and cannot be used, copied or reproduced without written pre-authorization.
- Les dimensions apparaissant aux documents doivent être vérifiées par l'entrepreneur avant le début des travaux. / All dimensions which appear on the documents must be verified by the contractor before to start the work.
- Veuillez noter l'existence de toute dimension enrou ou divergence entre ces documents et ceux des autres professionnels. / The architect must be notified of all errors, omissions and discrepancies between these documents and those of the others professionals.
- Les dimensions sur ces documents doivent être lues et non mesurées. / The dimensions on these documents must be read and not measured.

PLANIFICATEUR / Planner
FOTENN Planning and Urban Design
390 Cooper Street, Suite 300, Ottawa, ON K2P 2H7
T 613 730 5709 fotenn.com

ARCHITECTURE DE PAYSAGE / Landscape Architect
GJA Inc. Gino, J. Aiello
110 Dababy Road, Unit 9, Ottawa, ON K2T 0C2
T 613 289 6150 gja.com

INGÉNIEUR TRANSPORT / Transportation Engineering
PARSONS
1223 Somerset Street, Suite 100, Ottawa, ON K1J 1T2
T 613 738 4160 parsons.com

CIVIL / Civil
McINTOSH PERRY
115 Wellington Road RR 3 Corp., Ottawa, ON K0A 1L0
T 613 836 2184 mcintoshperry.com

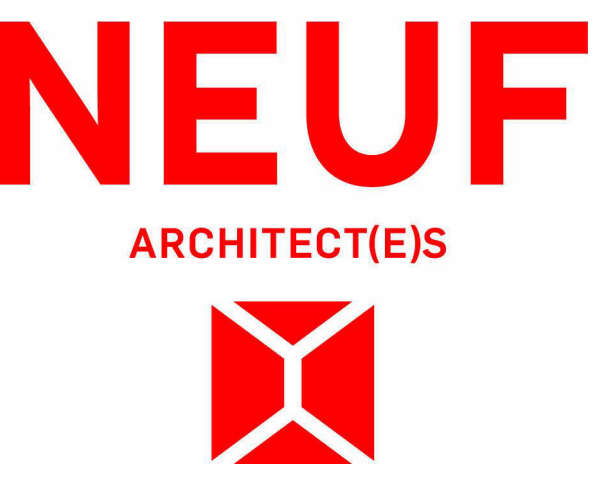
STRUCTURE / Structure
RJC Engineers
1545 Carling Avenue, Suite 304, Ottawa, ON K1Z 8P9
T 613 714 7000 rjc.ca

ARCHITECTES / Architect
NEUF architect(e)s
630 boul. René-Lévesque O. 32e étage, Montréal, QC H3B 1S6
T 514 947 1117 neuf.ca

INGÉNIEUR MÉCANIQUE / Mechanical Engineer
BUILDING Consultants
6455 rue Dorval-Leslie, Suite 110, Boisbriand, QC J7H 0E8
T 514 718 6841 building-consultants.ca

INGÉNIEUR ÉLECTRIQUE / Electrical Engineer
BUILDING Consultants
6455 rue Dorval-Leslie, Suite 110, Boisbriand, QC J7H 0E8
T 514 718 6841 building-consultants.ca

SCÉAU / Seal



3000 boul. La Centrale, Suite 1200, Laval, QC H7T 2P5
T 514 965 7462 sina.ca

OUVRAGE / Project
788 MARCH ROAD RESIDENTIAL

EMPLACEMENT / Location
OTTAWA, ON

NO. PROJET / No.
13109

NO. REVISION / DATE (aa-mm-jj)

**Preliminary
DO NOT USE FOR
CONSTRUCTION**

DESSINÉ PAR / Drawn by
E.S. / E.C.

DATE (aa-mm-jj)
2024-06-04

VERIFIÉ PAR / Checked by
A.C.

ÉCHELLE / Scale
1 : 250

TITRE DU DESSIN / Drawing Title
ELEVATIONS WITH NEIGHBOURS

REVISION / Revision
NO. DESSIN / Day Number
A452

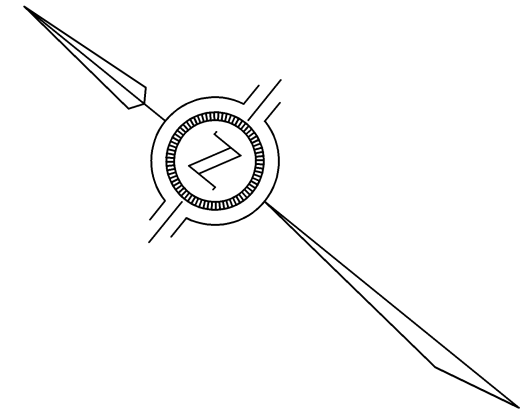


BUILDING CROSS SECTIONS WITH NEIGHBOURS NORTH
1:250



BUILDING CROSS SECTIONS WITH NEIGHBOURS SOUTH
1:250

Committee of Adjustment
Received | Reçu le
2024-06-20
City of Ottawa | Ville d'Ottawa
Comité de dérogation



TOPOGRAPHIC DETAIL OF
**PART OF LOT 10
CONCESSION 4**
GEOGRAPHIC TOWNSHIP OF MARCH
CITY OF OTTAWA
SCALE 1 : 250
J.D. BARNES LIMITED
© COPYRIGHT 2018
METRIC DISTANCES AND/OR COORDINATES SHOWN ON THIS PLAN ARE IN METRES AND CAN BE CONVERTED TO FEET BY DIVIDING BY 0.3048.

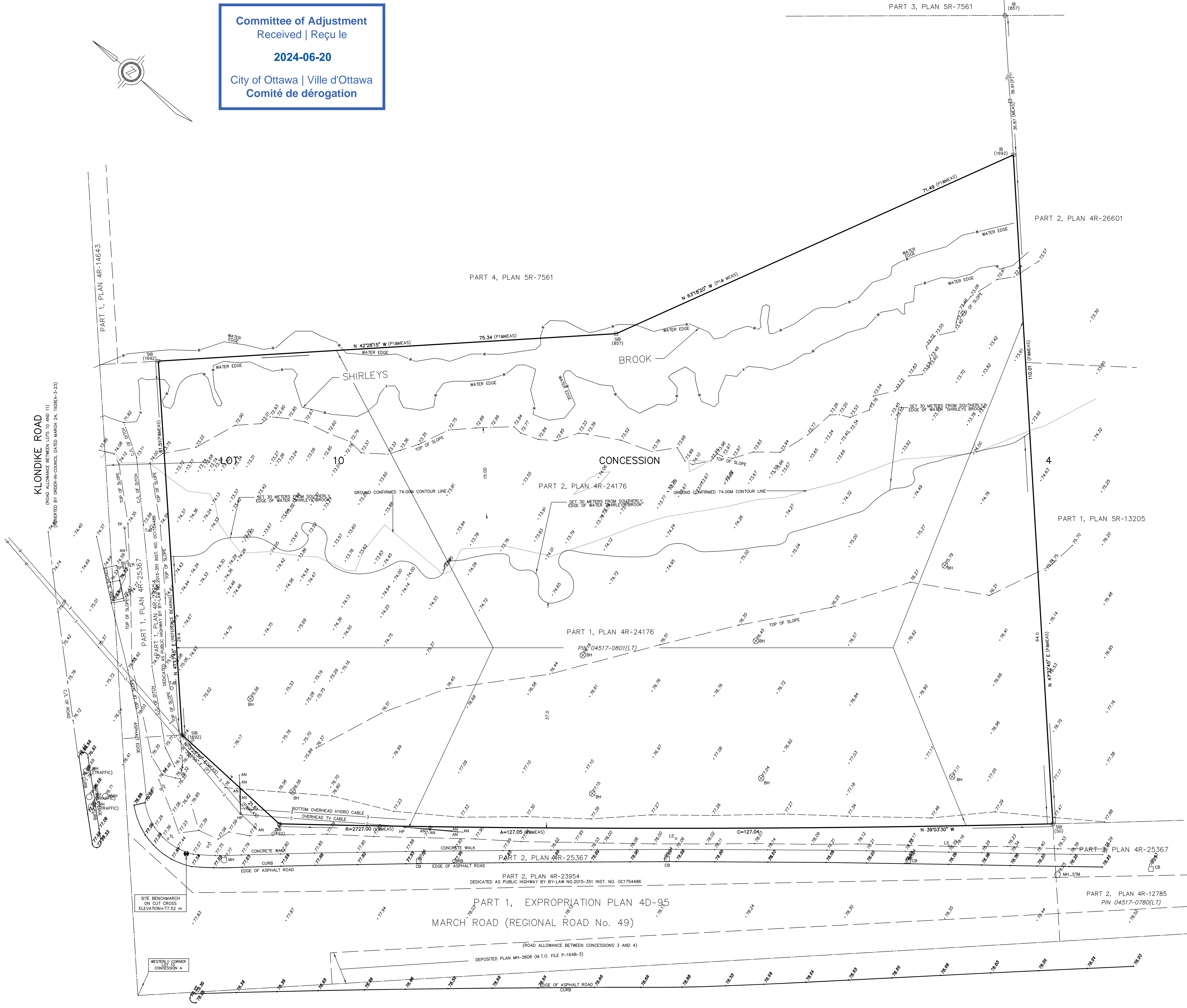
NOTES
BEARINGS ARE GRID AND ARE REFERRED TO SOUTHERLY LIMIT OF PART 1, SHOWN ON PLAN 4R-29354, HAVING A BEARING OF N 47°17'45" E.

LEGEND
 □ DENOTES SURVEY MONUMENT FOUND
 □ DENOTES SURVEY MONUMENT SET
 SIB DENOTES STANDARD IRON BAR
 SSB DENOTES SHORT STANDARD IRON BAR
 IB DENOTES IRON BAR
 PB DENOTES PLASTIC BAR
 WT DENOTES WITNESS
 MEAS DENOTES MEASURED
 P DENOTES PLAN 4R-25367
 P1 DENOTES PLAN 4R-24176
 857 DENOTES FAIRHALL & MOFFATT LIMITED
 892 DENOTES FARLEY, SMITH AND DENIS SURVEYING LTD.
 SG DENOTES STANTEC GEOMATICS
 C/L DENOTES CENTRELINE

ELEVATION NOTES
ELEVATIONS ARE GEODETIC AND ARE ESTABLISHED USING GLOBAL POSITIONING SYSTEM (GPS) EQUIPMENT TO ESTABLISH ELLIPSOIDAL HEIGHTS. ELLIPSOIDAL HEIGHTS WERE TRANSFORMED TO CVD-1988 DATUM (GEODETIC) USING THE FEDERAL HT2.0 HEIGHT TRANSFORMATION MODEL.
IT IS THE RESPONSIBILITY OF THE USER OF THIS INFORMATION TO VERIFY THAT THE SITE BENCHMARK HAS NOT BEEN ALTERED OR DESTROYED AND THAT ITS RELATIVE ELEVATION AND DESCRIPTION AGREES WITH THE INFORMATION SHOWN ON THIS DRAWING.

AREA NOTE
DEVELOPMENT AREA SOUTH WEST OF 30m SETBACK 6664.1 sqm.

□ CB DENOTES SINGLE CATCHBASIN
 ○ MH DENOTES MANHOLE
 ○ STM MH DENOTES STORM MANHOLE
 ○ WMH DENOTES WATER MANHOLE
 ○ BH DENOTES BORE HOLE
 ○ HP DENOTES HYDRO POLE
 ○ LS DENOTES LIGHT STANDARD
 ○ T DENOTES TELEPHONE POLE
 ○ TL DENOTES TELEPHONE JUNCTION BOX
 ○ T-AN DENOTES TRAFFIC LIGHT
 ○ AN DENOTES POLE ANCHOR



TOPOGRAPHIC SURVEY UPDATED ON MAY 18, 2018

J.D. BARNES LIMITED
SURVEYING MAPPING GIS
LAND INFORMATION SPECIALISTS
2430 DON REID DRIVE, SUITE 204, OTTAWA, ON K1H 1E1
T: (613) 731-7244 F: (613) 731-8955 www.jdbarnes.com

DRAWN BY: LH	CHECKED BY: SS/CF	REFERENCE NO.: 17-10-136-00
FILE: G:\17-10-136\00\17-10-136 Topo.dgn	DATED: 05/30/18	PLOTTED: 7/18/2018