

Committee of Adjustment
Received | Reçu le
2023-05-02
City of Ottawa | Ville d'Ottawa
Comité de dérogation

SCHEDULE		
PART	PART OF LOT	CONCESSION
1	3	
2	2&3	
3	2	
4	2&3	3 (RIDEAU FRONT)
5	3	

PART 1 IS SUBJECT TO EASEMENT PER REG. NO. 017462;
PART 4 IS SUBJECT TO EASEMENT PER REG. NO. 0117008;
PART 6 IS SUBJECT TO EASEMENT AS IN REG. NO. 0364439;
PART 7 IS SUBJECT TO EASEMENT AS IN 0365275.

PLAN OF SURVEY OF
**PART OF LOTS 2 & 3
CONCESSION 3 (RIDEAU FRONT)**
(GEOGRAPHIC TOWNSHIP OF GLEUCHESTER)
CITY OF OTTAWA
Scale 1:400
Stantec Geomatics Ltd.

METRIC CONVERSION
DISTANCES AND COORDINATES SHOWN ON THE PLAN ARE IN METRES
AND CAN BE CONVERTED TO FEET BY DIVIDING BY 0.3048
GRID SCALE CONVERSION
DISTANCES ARE GROUND AND CAN BE CONVERTED TO GRID BY MULTIPLYING BY THE
COMBINED SCALE FACTOR OF 0.9999443.
BEARING NOTE
BEARINGS ARE GRID, DERIVED FROM CANMET WGS NETWORK GPS OBSERVATIONS ON ICCC
HORIZONTAL CONTROL MONUMENTS 1977302 AND 1980191, CENTRAL MERIDIAN, 79° 30'
WEST LONGITUDE WITH ZONE 9, NAD83 (GREGGIAN).
ROTATION NOTE
FOR COMPARISON PURPOSE, A ROTATION OF 0.1714° COUNTER CLOCKWISE WAS APPLIED
TO R. A ROTATION OF 0.1724° COUNTER CLOCKWISE WAS APPLIED TO P. A ROTATION
OF 0.1722° COUNTER CLOCKWISE WAS APPLIED TO P1.

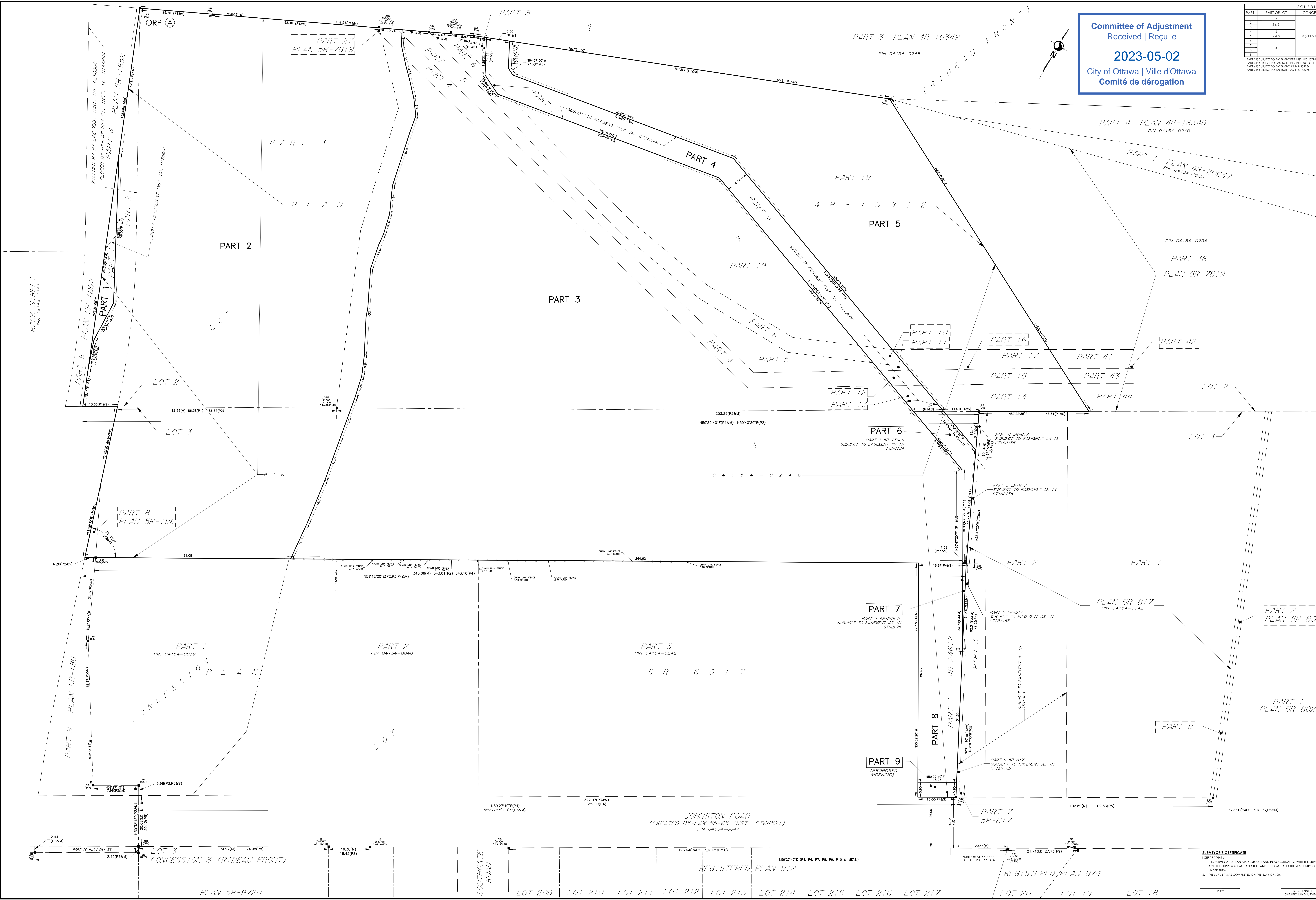
LEGEND	
IS	IRON MONUMENT
ISB	SEE MONUMENT
ISR	ROCK MONUMENT
ISRB	ROCK MONUMENT
ISSB	STANDARD ROCK BAR
ISSB	SHORT STANDARD ROCK BAR
CC	CONCRETE PIN
CP	CONCRETE PIN
W	WIRE
WP	PROPERTY IDENTIFICATION NUMBER
PIN	PROPERTY IDENTIFICATION NUMBER
S	SET
IS	IRON MONUMENT
ISB	SEE MONUMENT
ISR	ROCK MONUMENT
ISRB	ROCK MONUMENT
ISSB	STANDARD ROCK BAR
ISSB	SHORT STANDARD ROCK BAR
CC	CONCRETE PIN
CP	CONCRETE PIN
W	WIRE
WP	PROPERTY IDENTIFICATION NUMBER
PIN	PROPERTY IDENTIFICATION NUMBER
S	SET
IS	IRON MONUMENT
ISB	SEE MONUMENT
ISR	ROCK MONUMENT
ISRB	ROCK MONUMENT
ISSB	STANDARD ROCK BAR
ISSB	SHORT STANDARD ROCK BAR
CC	CONCRETE PIN
CP	CONCRETE PIN
W	WIRE
WP	PROPERTY IDENTIFICATION NUMBER
PIN	PROPERTY IDENTIFICATION NUMBER
S	SET

OBSERVED REFERENCE POINTS DERIVED FROM THE CANMET WGS NETWORK GPS OBSERVATIONS ON ICCC HORIZONTAL CONTROL MONUMENTS 1977302 AND 1980191, CENTRAL MERIDIAN, 79° 30' WEST LONGITUDE WITH ZONE 9, NAD83 (GREGGIAN), COORDINATES TO UTM ACCOUNT FOR SEC 14D OF Q. 24E, 21E10		
POINT ID	NORTHING	EASTING
01	505347.45	317391.45
02	505314.30	317391.45

COORDINATES CANNOT, IN THEMSELVES, BE USED TO ESTABLISH CORNERS OR BOUNDARIES EXCEPT ON THIS PLAN.

SURVEYOR'S CERTIFICATE
I, the undersigned, hereby certify that:
1. THE SURVEY AND PLAN ARE CORRECT AND ACCORDANCE WITH THE SURVEY ACT AND THE REGULATIONS MADE UNDER THEREOF.
2. THE SURVEY WAS COMPLETED ON THE DAY OF 20.
DATE: _____
K. G. BARNETT
OTTAWA LAND SURVEYOR

Stantec Geomatics Ltd.
100 SUITE 400 1000 2ND ST W
OTTAWA, ONTARIO, CANADA K2H 6L5
TEL: 613 732 7442
FAX: 613 732 7443



JOHNSTON ROAD
(CREATED BY-LAW 59-65 INST. 0764521)
PIN 04154-0047

REGISTERED PLAN 812

REGISTERED PLAN 874

CONCESSION 3 (RIDEAU FRONT)
PLAN 5R-9720

LOT 209 LOT 210 LOT 211 LOT 212 LOT 213 LOT 214 LOT 215 LOT 216 LOT 217 LOT 20 LOT 19 LOT 18