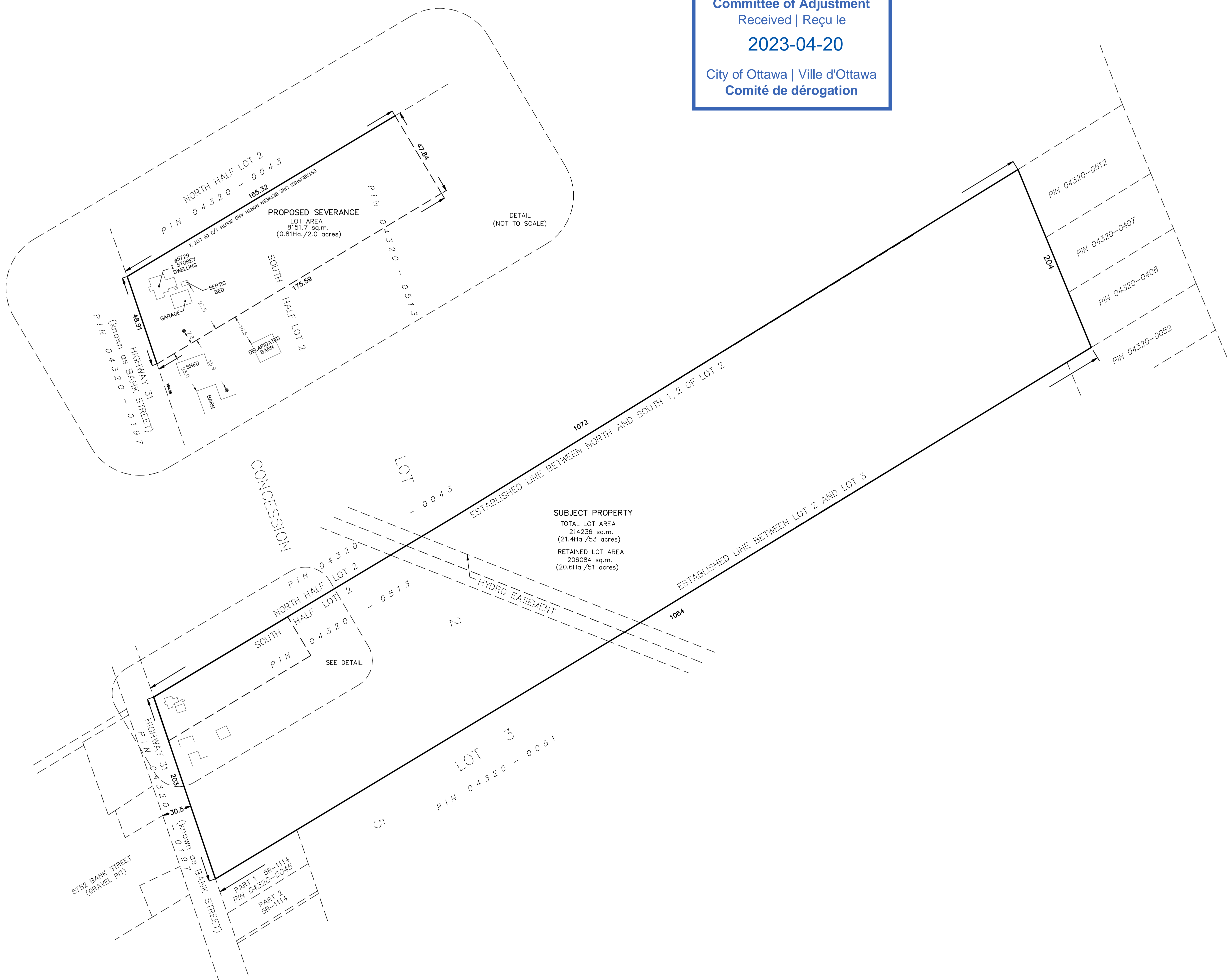


METRIC
DISTANCES AND COORDINATES SHOWN ON THIS PLAN ARE IN METRES
AND CAN BE CONVERTED TO FEET BY DIVIDING BY 0.3048

Committee of Adjustment
Received | Reçu le
2023-04-20
City of Ottawa | Ville d'Ottawa
Comité de dérogation

SKETCH OF
LOT
REGISTERED PLAN
CITY OF OTTAWA
SCALE 1 : 2000
0 10 20 50 100 200 metres
FAIRHALL, MOFFATT & WOODLAND LIMITED
ONTARIO LAND SURVEYORS



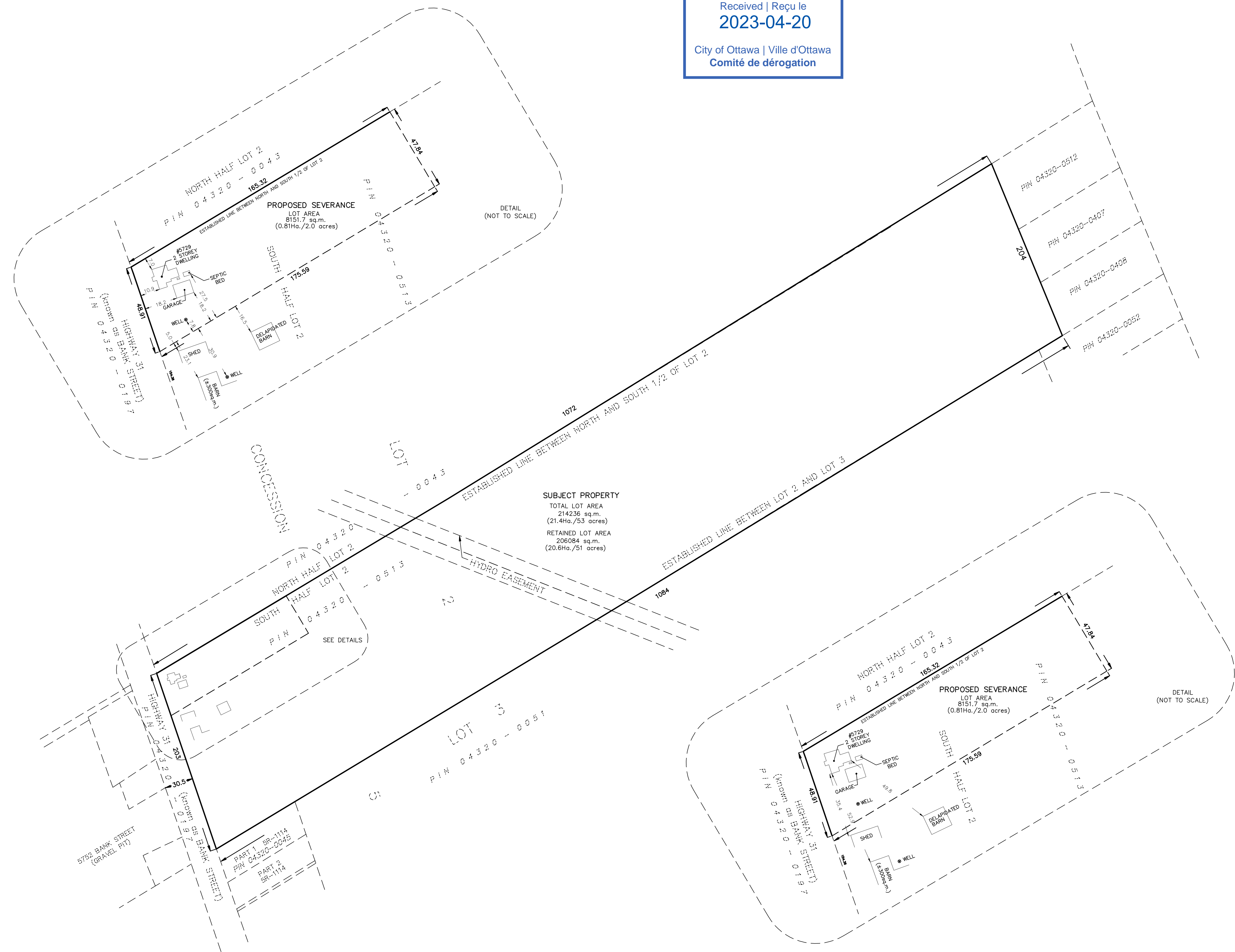
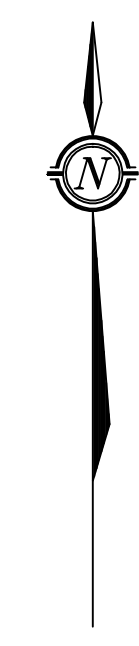
SUBJECT PROPERTY
TOTAL LOT AREA
214236 sq.m.
(21.4Ha./53 acres)
RETAINED LOT AREA
206084 sq.m.
(20.6Ha./51 acres)

NOTES
1. DISTANCES ARE COMPILED FROM PLANS 4R-8562 AND 4R-9902
AND GEOTOWA
2. DISTANCES AND AREAS ARE APPROXIMATE AND SUBJECT TO SURVEY.

Fairhall Moffatt & Woodland LIMITED ONTARIO LAND SURVEYORS Surveying and Land Information Services 100-600 TERRY FOX DRIVE, MANAKA, ONTARIO K2L 4B6 TEL: (613) 591-2580 FAX: (613) 591-1495 www.fmw.on.ca		JOB No. AB16400
		E, N
		REFERENCE No. •
		S:\JOB\AB16400\DWG\ ab164_sk.dwg (kg)

METRIC
 DISTANCES AND COORDINATES SHOWN ON THIS PLAN ARE IN METRES
 AND CAN BE CONVERTED TO FEET BY DIVIDING BY 0.3048

Committee of Adjustment
 Received | Reçu le
2023-04-20
 City of Ottawa | Ville d'Ottawa
 Comité de dérogation



SUBJECT PROPERTY
 TOTAL LOT AREA
 214236 sq.m.
 (21.4Ha./53 acres)
 RETAINED LOT AREA
 206084 sq.m.
 (20.6Ha./51 acres)

- NOTES**
1. DISTANCES ARE COMPILED FROM PLANS 4R-8562 AND 4R-9902 AND GEO-OTTAWA.
 2. DISTANCES AND AREAS ARE APPROXIMATE AND SUBJECT TO SURVEY.

SKETCH OF
PART OF LOT 2
CONCESSION 5
TOWNSHIP OF OSGOODE
CITY OF OTTAWA

SCALE 1 : 2000
 0 10 20 50 100 200 metres
FAIRHALL, MOFFATT & WOODLAND LIMITED
 ONTARIO LAND SURVEYORS

Fairhall Moffatt & Woodland <small>LIMITED</small> <small>ONTARIO LAND SURVEYORS</small> <i>Surveying and Land Information Services</i> <small>100-600 TERRY FOX DRIVE, MANAKA, ONTARIO K2L 4B6 TEL: (613) 591-2580 FAX: (613) 591-1495 www.fmw.on.ca</small>		JOB No. AB16400
		E, N
		REFERENCE No. 152 - 5 OSGOODE
		5:\jos\AB16400\DWG\ab164_sk.dwg (kg)


Committee of Adjustment
Revised
 APR 27 2023
 City of Ottawa

PLAN PREPARED FOR
 COMMITTEE OF ADJUSTMENT
 PURPOSES JULY 8, 2021

SCHEDULE			
PART	LOT	CONCESSION	PIN
1	PART OF 2	5	PART OF PIN 04320-0513

I REQUIRE THIS PLAN TO BE DEPOSITED UNDER THE LAND TILES ACT.
 DATE _____
 REPRESENTATIVE FOR THE LAND TILES DIVISION OF OTTAWA - CARLETON (N° 4)
 JOHN H. GUTHR, O.L.S.

PLAN OF SURVEY OF
 PART OF LOT 2
 CONCESSION 5
 TOWNSHIP OF OSGOODE
 CITY OF OTTAWA

SCALE 1:1500

 THE APPROX. PLAT SIZE OF THIS PLAN IS 900mm IN WIDTH BY 600mm IN HEIGHT MEAS. PLotted AT A SCALE OF 1:500.
 FAIRHALL, MOFFATT & WOODLAND LIMITED
 ONSHORE LAND SURVEYORS

COORDINATES WERE DERIVED FROM REAL TIME NETWORK OBSERVATIONS (RTK/RTCM) WITH ZONE 18, WGS84 ORIGINAL. COORDINATES HAVE BEEN DETERMINED TO AN URBAN ACCURACY IN ACCORDANCE WITH SECTION 14(2) OF O.M.C. 216/10.

POINT ID	NORTHING	EASTING

COORDINATES CANNOT IN THEMSELVES BE USED TO RE-ESTABLISH CORNERS OR BOUNDARIES SHOWN ON THIS PLAN.


- NOTES**
- BEARINGS HEREIN ARE REFERENCED AND ARE REFERRED TO THE MERIDIAN LINE OF HIGHWAY 31 AS SHOWN ON DEPARTMENT OF HIGHWAYS (OSGOODE) PLAN P-2146-6, HAVING A BEARING OF N18°43'30"W.
 - BEARINGS CAN BE CONVERTED TO GRID BY APPLYING AN ANGLE EQUAL TO 10°00'00" CLOCKWISE.
 - DISTANCES AND GROUNDS CAN BE CONVERTED TO GRID BY MULTIPLYING BY THE CORRECTED SCALE FACTOR 0.9999999999.

- LEGEND**
- - SURVEY MONUMENT SET
 - - SURVEY MONUMENT FOUND
 - SB - STANDARD BORN BAR
 - SBH - SHORT STANDARD BORN BAR
 - SB - BORN BAR
 - (P) - 44-8902
 - (P1) - SR-1114
 - (P2) - HIGHWAY PLAN P-2146-6
 - (DE) - INSTRUMENT 0815/12
 - (S) - SET
 - (M) - MEASURED
 - (F1) - FAIRHALL, MOFFATT & WOODLAND LIMITED, O.L.S.
 - (ROO) - CHARLES S. ROOFS, O.L.S.
 - (M1) - MAZEH HELWAN LIMITED, O.L.S.
 - (PH) - PROPERTY CORNER NUMBER
 - (W) - WELL
 - (FP) - FENCE POST
 - (UP) - UTILITY POLE

SURVEYOR'S CERTIFICATE

I CERTIFY THAT:
 1. THE SURVEY AND PLAN ARE CORRECT AND IN ACCORDANCE WITH THE SURVEY ACT, THE SURVEYORS ACT, THE LAND TILES ACT AND THE REGULATIONS MADE UNDER THEM.
 2. THE SURVEY WAS COMPLETED ON _____
 DATE _____
 JOHN H. GUTHR
 ONSHORE LAND SURVEYOR

THIS PLAN OF SURVEY RELATES TO A25 PLAN SUBMISSION FORM NUMBER _____

 Planning and Land Information Services 3 LAMBTON SQUARE OTTAWA, ONTARIO K1P 1G6 TEL: (613) 992-3111 FAX: (613) 992-3112	PIN NO. A251400
	DATE 17 FEB 2023
SURVEYOR JOHN H. GUTHR	PIN NO. 04320-0513
PROJECT NO. 132 - 5 OSGOODE	DATE 17 FEB 2023

NOTES
 DISTANCES AND COORDINATES SHOWN ON THIS PLAN ARE IN METRES AND CAN BE CONVERTED TO FEET BY DIVIDING BY 0.3048

