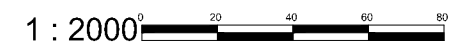
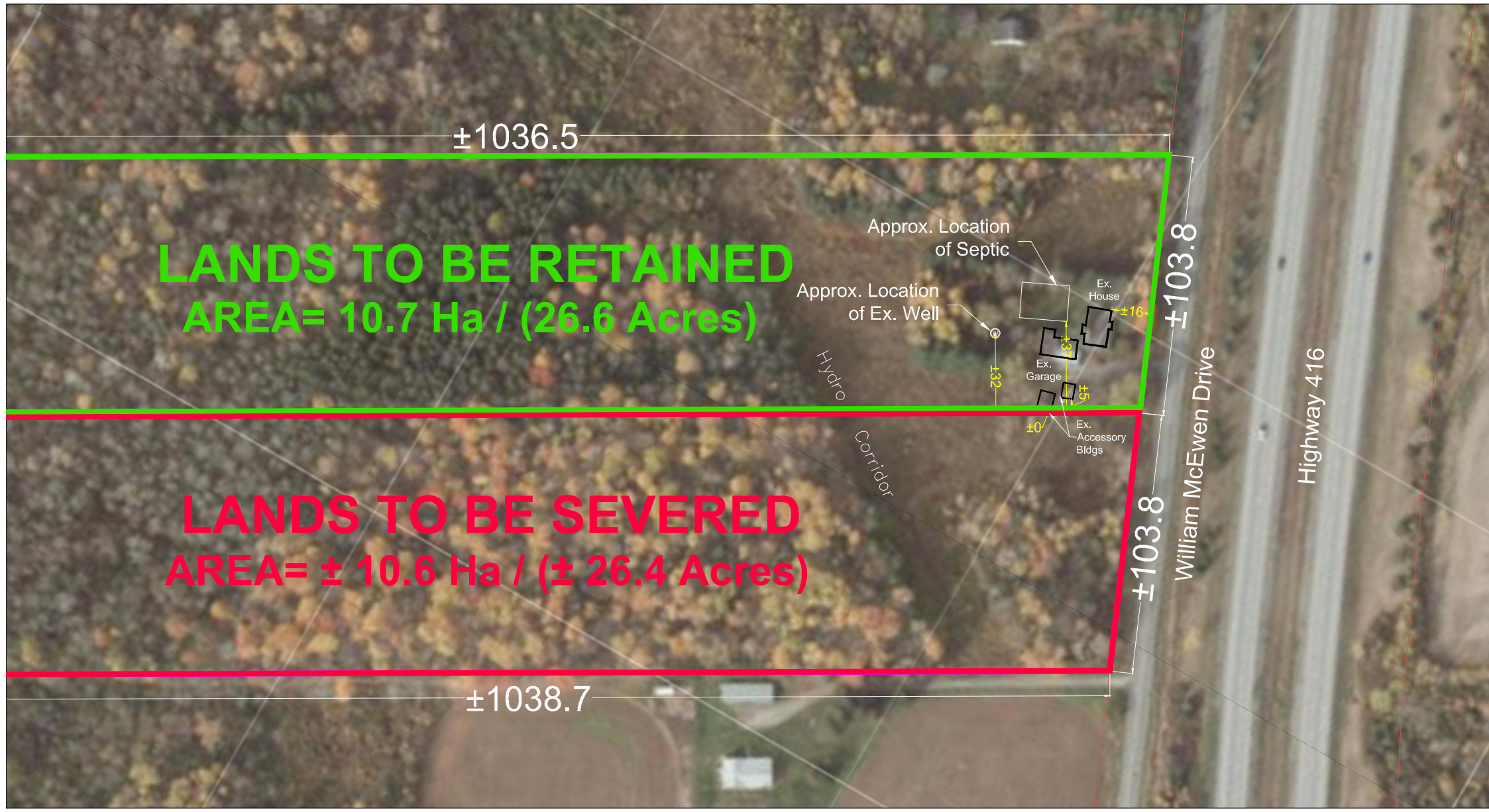


# CONSENT APPLICATION

4160 WILLIAM McEWEN DRIVE

PART LOT 3,  
CONCESSION 4 RF  
GEOGRAPHIC TOWNSHIP OF NEPEAN  
CITY OF OTTAWA



No.	REVISION	DATE	BY
1.	ISSUED FOR CONSENT APPLICATION	JULY 14/23	RP

**NOVATECH**  
Engineers, Planners & Landscape Architects  
Suite 200, 240 Michael Cowpland Drive  
Ottawa, Ontario, Canada K2M 1P6  
Telephone (613) 254-9643  
Facsimile (613) 254-5857  
Website www.novatech-eng.com

ISSUED	JULY, 2023
PROJECT No.	122095
DRAWING No.	122095-SEV

M:\2021\122095\CAD\Planning\Figures\122095-SEV.dwg, SEV1, Jul 20, 2023 - 3:53pm, wslloss