

ROAD ALLOWANCE BETWEEN LOTS 30 AND 31 CONCESSION 2 (OTTAWA FRONT) (NEPEAN)  
(KNOWN LOCALLY AS CLYDE AVENUE)  
PIN 03998 - 0186

I REQUIRE THIS PLAN TO BE DEPOSITED UNDER THE LAND TITLES ACT.  
DATE: JUNE 27/22

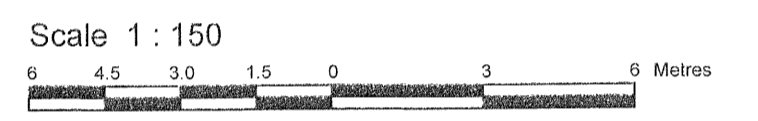
PLAN 4R-34724  
RECEIVED AND DEPOSITED  
DATE: JUNE 28, 2022

*Linda Crouch*  
Linda Crouch  
REPRESENTATIVE FOR  
LAND REGISTRAR FOR THE  
LAND TITLES DIVISION OF  
OTTAWA-CARLETON NO. 4.

| SCHEDULE |                   |        |                   |
|----------|-------------------|--------|-------------------|
| PART     | LOT               | PLAN   | PIN               |
| 1        | PART OF 349 & 350 | 347549 | ALL OF 03996-0167 |
| 2        |                   |        |                   |
| 3        | PART OF 349       | 347549 |                   |
| 4        |                   |        |                   |
| 5        |                   |        |                   |

Committee of Adjustment  
Received | Reçu le  
**2024-06-06**  
City of Ottawa | Ville d'Ottawa  
Comité de dérogation

PLAN OF SURVEY OF  
PART OF LOTS 349 AND 350  
REGISTERED PLAN 347549  
CITY OF OTTAWA  
Surveyed by Annis, O'Sullivan, Vollebek Ltd.



Metric  
DISTANCES AND COORDINATES SHOWN ON THIS PLAN ARE IN METRES AND CAN BE CONVERTED TO FEET BY DIVIDING BY 0.3048.

Surveyor's Certificate  
I CERTIFY THAT:  
1. This survey and plan are correct and in accordance with the Surveys Act, the Surveyors Act and the Land Titles Act and the regulations made under them.  
2. The survey was completed on the 21st day of April, 2022.

JUNE 27/22  
Date  
*T. Hartwick*  
T. Hartwick  
Ontario Land Surveyor

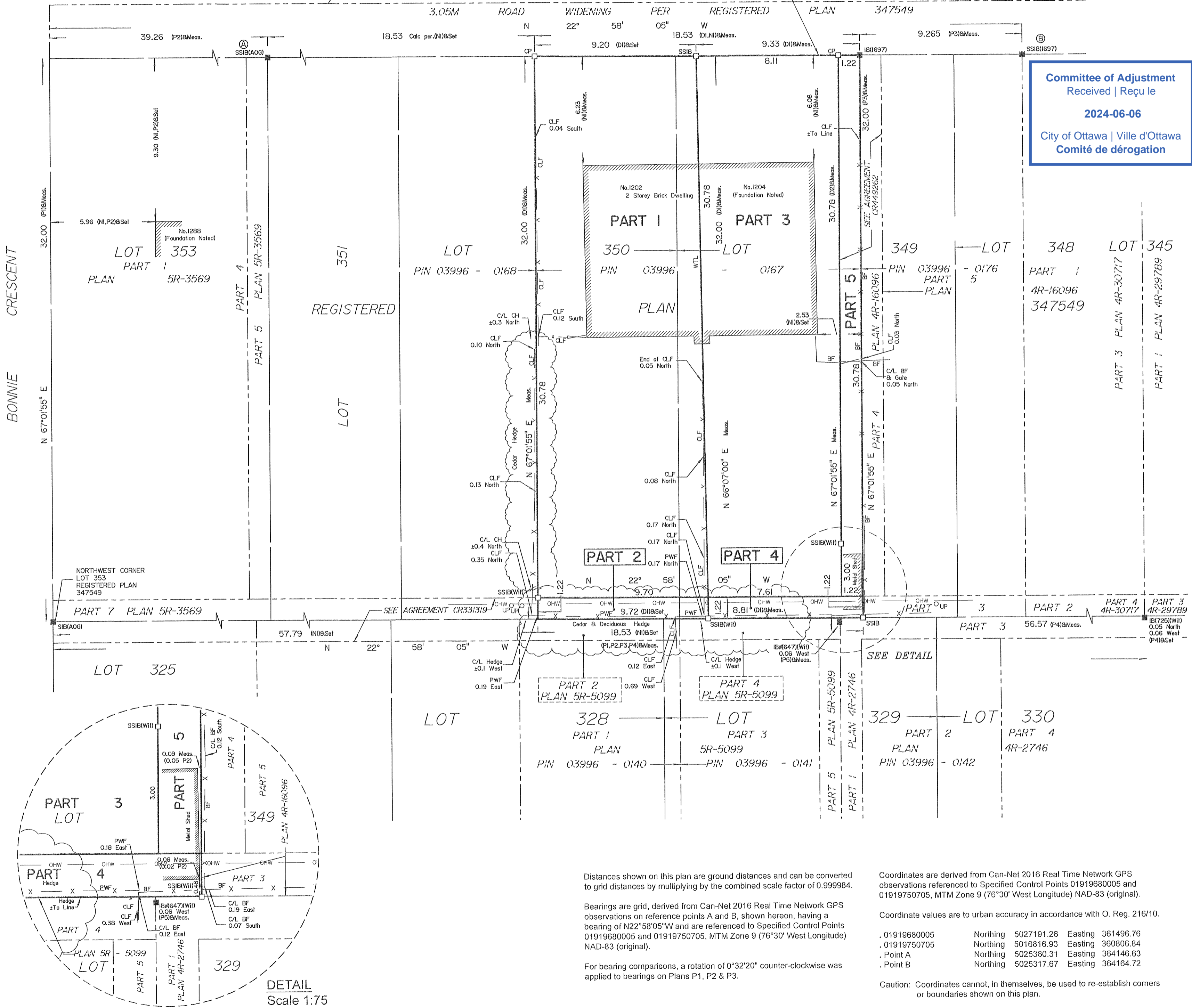
This plan relates to AOLS Plan Submission form number : V-27649

Notes & Legend

|       |         |   |
|-------|---------|---|
| □     | Denotes | Survey Monument Planted                   |
| ■     | "       | Survey Monument Found                     |
| SIB   | "       | Standard Iron Bar                         |
| SSIB  | "       | Short Standard Iron Bar                   |
| IB    | "       | Iron Bar                                  |
| CP    | "       | Concrete Pin                              |
| IBØ   | "       | Round Iron Bar                            |
| (WIT) | "       | Witness                                   |
| (AOG) | "       | Annis, O'Sullivan, Vollebek Ltd.          |
| Meas. | "       | Measured                                  |
| (D1)  | "       | Inst. N685012                             |
| (D2)  | "       | Inst. CR449262                            |
| (P1)  | "       | Registered Plan 347549                    |
| (P2)  | "       | Plan 5R-3569                              |
| (P3)  | "       | Plan 4R-16096                             |
| (P4)  | "       | Plan 4R-30717                             |
| (P5)  | "       | Plan 5R-9099                              |
| (N1)  | "       | (725) Field Records Dated July 23rd, 1962 |
| PWF   | "       | Post & Wire Fence                         |
| BF    | "       | Board Fence                               |
| CLF   | "       | Chain Link Fence                          |
| C/L   | "       | Centreline                                |
| WTL   | "       | Centreline of Wall ± to Line              |
| CH    | "       | Cedar Hedge                               |
| G     | "       | Gale                                      |
| OHW   | "       | Overhead Wires                            |
| O UP  | "       | Utility Pole                              |

**ANNIS, O'SULLIVAN, VOLLEBEK LTD.**  
14 Concourse Gate, Suite 500  
Nepean, Ont. K2E 7S6  
Phone: (613) 727-0850 / Fax: (613) 727-1079  
Email: Nepean@aosvlltd.com

Ontario Land Surveyors Job No. 21836-21 Bfirmery PHIL1349.L1350 RP347549 R.F. DG



Distances shown on this plan are ground distances and can be converted to grid distances by multiplying by the combined scale factor of 0.999984.

Bearings are grid, derived from Can-Net 2016 Real Time Network GPS observations on reference points A and B, shown hereon, having a bearing of N22°58'05"W and are referenced to Specified Control Points 01919680005 and 01919750705, MTM Zone 9 (76°30' West Longitude) NAD-83 (original).

For bearing comparisons, a rotation of 0°32'20" counter-clockwise was applied to bearings on Plans P1, P2 & P3.

Coordinates are derived from Can-Net 2016 Real Time Network GPS observations referenced to Specified Control Points 01919680005 and 01919750705, MTM Zone 9 (76°30' West Longitude) NAD-83 (original).

Coordinate values are to urban accuracy in accordance with O. Reg. 216/10.

|               |          |            |         |           |
|---------------|----------|------------|---------|-----------|
| . 01919680005 | Northing | 5027191.26 | Easting | 361496.76 |
| . 01919750705 | Northing | 5016816.93 | Easting | 360806.84 |
| . Point A     | Northing | 5025380.31 | Easting | 364146.63 |
| . Point B     | Northing | 5025317.67 | Easting | 364164.72 |

Caution: Coordinates cannot, in themselves, be used to re-establish corners or boundaries shown on this plan.

